

Sakasaka at the Clark Studio Theater



Sakasaka is a delightful wordless comedy for all ages. La Compagnie Zolobe's clown trio uses physical comedy and body language to take audiences on hilarious adventures that explore water while remaining completely silent. A musician plays traditional instruments: *kabosy* (a rectangular guitar) and *djembe* (drum).

This seated, general admission event has a running time of **1 hour with no intermission**. It is a Relaxed Performance, open to all, but designed for people with autism, sensory, and communication disorders or learning disabilities.

The program will take place **Sunday, December 17th at 11am-12pm** in the **Clark Studio Theater** on the 7th floor of the Samuel B. and David Rose Building.

The address is 165 West 65th Street between Broadway and Amsterdam.

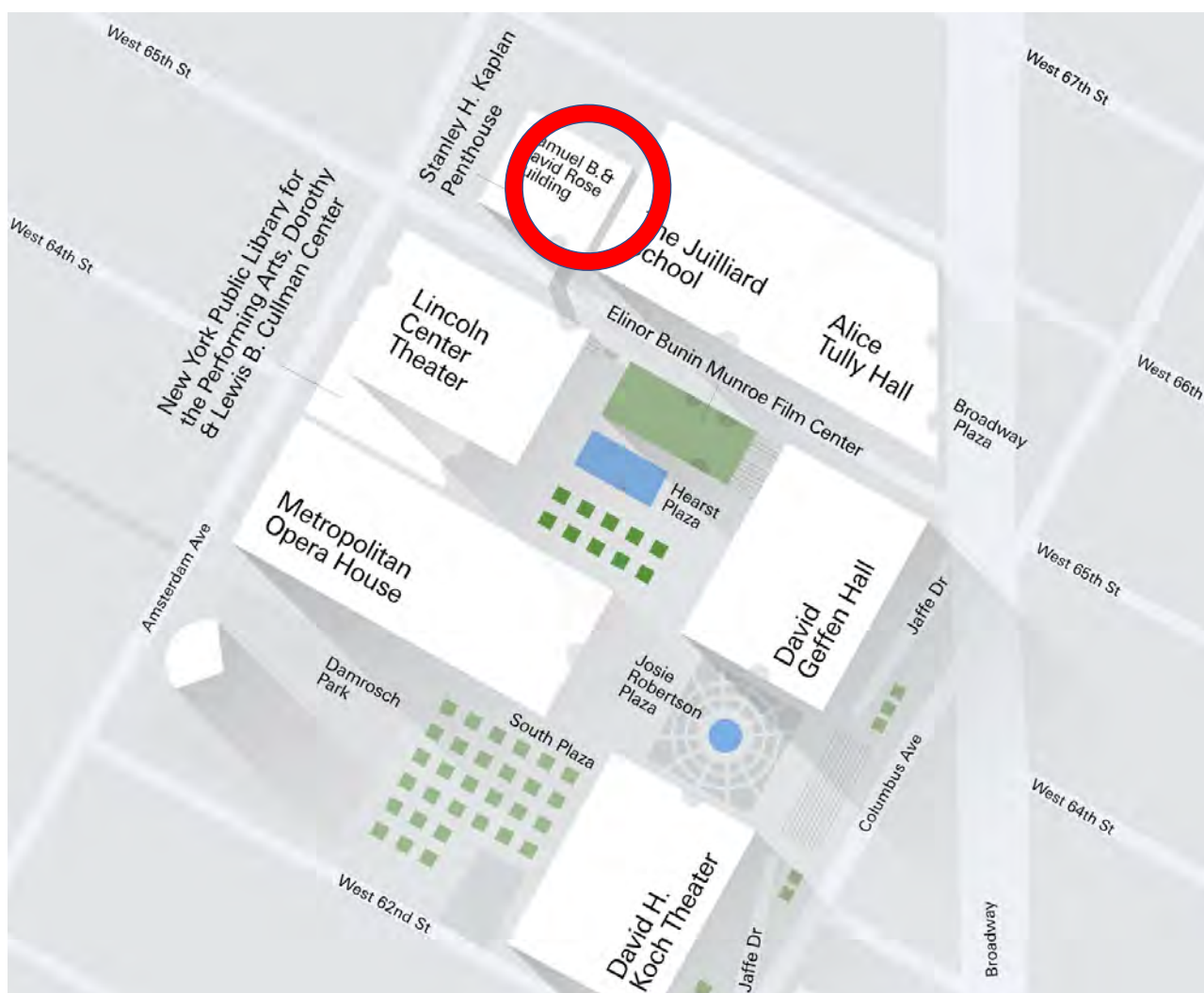
Table of Contents

Getting to the Clark Studio Theater	3
Travel Options	4
Venue Access	6
Audience Entrance and Security Gate	7
Performance Space	8
About the Performers	9
Accommodations	10
Restrooms	12
Food and Drink	13
While You Wait	14

Getting to the Clark Studio Theater

The Lincoln Center Campus is on the Upper West Side of Manhattan between West 62nd and 65th Streets and Columbus and Amsterdam Avenues.

The Clark Studio Theater is located at 165 West 65th Street on the 7th floor of the Samuel B. and David Rose Building between Broadway and Amsterdam.



The Samuel B. and David Rose Building is located next to the Walter Reade Theater and the Irene Diamond Building of The Juilliard School and across the street from Lincoln Center Theater and the Elinor Bunin Monroe Film Center.

Travel Options:

By Subway:

The Clark Studio Theater is a short distance from the **1** train at West 66th Street and a slightly longer distance from the **A, B, C, D** or **1** trains at 59th Street—Columbus Circle. Both subway stations are accessible via elevator.



By Bus:

The **M5, M7, M10, M11, M66, and M104** bus lines all stop within one block of Lincoln Center.

Access-A-Ride:

The recommended Access-A-Ride address for drop off closest to the main entrance is **165 West 65th Street**.

Pick-Up/Drop-Off:

North side of West 65th Street between Broadway and Amsterdam Avenues.

Parking:

Main Campus Parking (operated by ICON) is available beneath Lincoln Center's plaza. Advanced reservations are recommended.

- Entrance for the Reserved Parking Section is on Amsterdam Avenue at 64th Street.
- Designated accessible parking spaces are located in the yellow section of the garage.
- Parking permit and/or sticker must be displayed.
- Advance reservations include a \$5 service charge.
- Height restrictions for vans apply.

To reserve parking, call CenterCharge at 212-721-6500 or visit online at Tickets.LincolnCenter.org/parking.

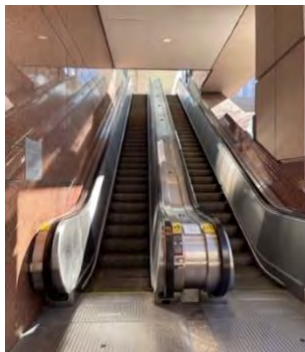


Venue Access

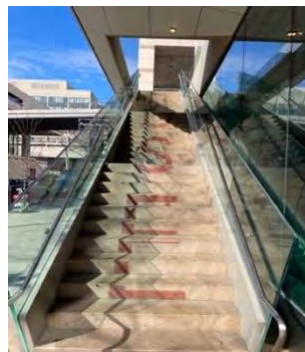
The Samuel B. and David Rose Building is accessible from West 65th Street by elevator, stairs, and escalator.



This is the entrance to the elevator on the street level. It is located near the northeast corner of 65th Street and Amsterdam Avenue.



This is the base of the street-level escalators, located next to the elevator.



This is the Rose Building staircase, which reads “Rose” on the steps. It is located in the middle of West 65th Street between Broadway and Amsterdam.

Additionally, you can enter from Hearst Plaza by crossing the President’s Bridge next to Lincoln Center Theater.

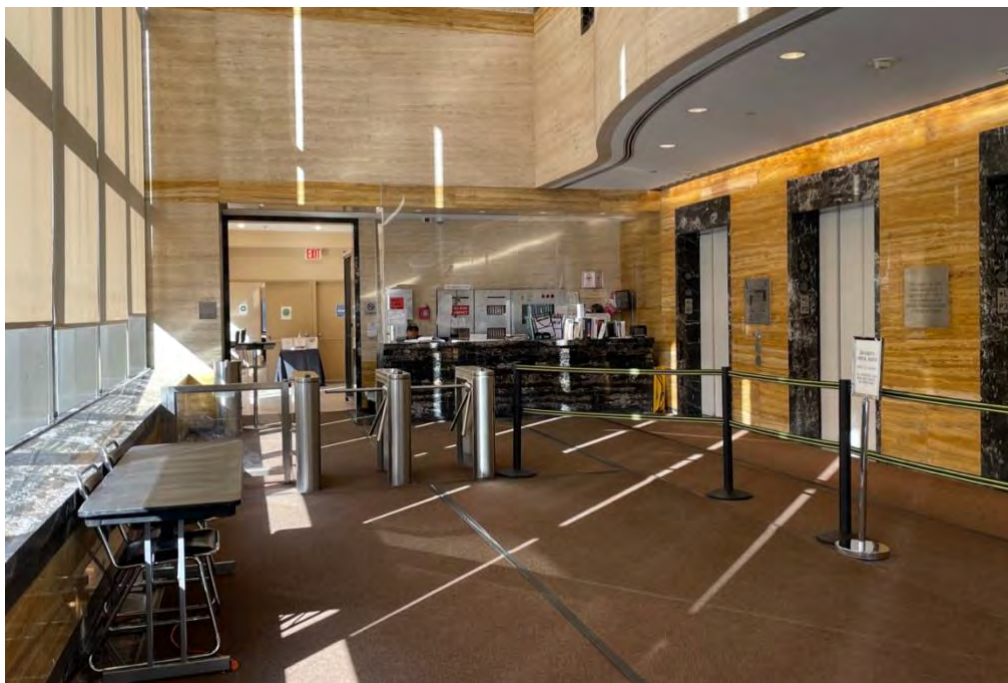


Audience Entrance and Security Gate

The entrance to the Samuel B. and David Rose Building has manual, revolving, and automatic door options.

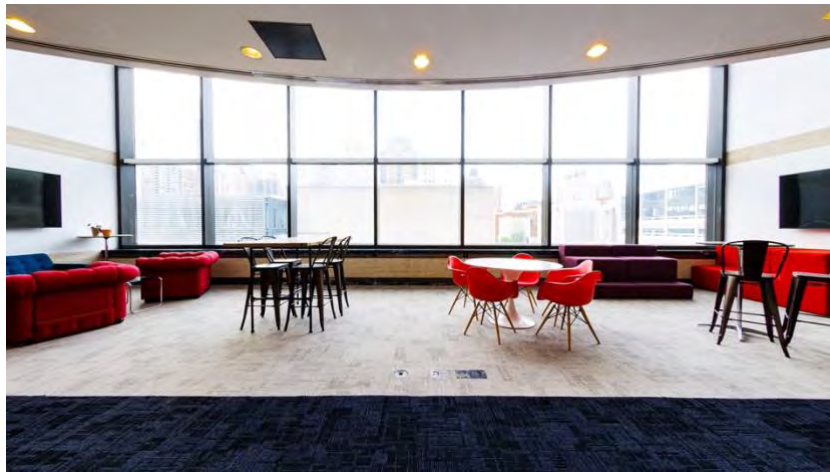


The Box Office for Clark Studio Theater performances is located in the lobby of the Rose Building. Guests will be greeted by Lincoln Center staff and will be directed to enter through a security gate to reach the elevators.



To get to the Clark Studio Theater, guests can enter the Samuel B. and David Rose Building go past the security gate and use the elevators to get to the 7th floor.

Once the doors open on the 7th floor, guests will be in the lobby (pictured below). The entrance to the Clark Studio Theater is on your right.



To access the restrooms or chill out space, follow the hallway to the right of the performance venue.

Performance Space

Chairs will be set in rows, with accessible seat locations available throughout the space.



Performers You Will See:



Yellow Clown
Jacquelin



Grey Clown
Ridel



Blue Clown
Mohamad



Musicians
Vagnonjara and Hervé

During the performance, the clowns onstage will be playing with water. Audience members sitting near the stage may get splashed with a few drops.

Accommodations

This venue has accessible routes, with designated wheelchair and companion seating.

Wheelchairs are available to borrow during the performance and on campus.



The 11am performance is a **Relaxed Performance**. This means:



- Guests are able to **enter and leave** the audience space throughout the event, as needed.
- Guests can **vocalize or move** throughout audience space.
- Fellow audience members are asked to create a **no “shushing” zone**.
- House lights are adjusted so the venue is **never fully dark**.
- Bright lights, loud noises, and surprise sensory elements are **described in advance**.
- **Chill Out Space**, located down the hall from the Theater, is available for guests to take a break and rejoin performance when ready.
- Staff members and artists are **trained** in access and inclusion best practices.

Noise-reducing headphones, earplugs, fidgets, and more are available to borrow at the Access table in the 7th floor lobby.



FM assistive listening devices with headsets are available to borrow at the Access table in the 7th floor lobby. Guests are encouraged to bring their own headphones or standard jack headsets.



This performance will feature live audio description, designed for guests who are blind or have low vision, via headsets. Audio description receivers and headsets can be picked up at the box office in the lobby of the Rose Building.



Access Concierge Service: Access Reps, trained to support guests with disabilities, are available to provide 1:1 support for individual guests and their party. Access Concierge Services **must be scheduled in advance**. For further information, email questexperience@lincolncenter.org or call **212 875 5456**.



If you require any additional accommodations, please contact access@lincolncenter.org or [212 875 5375](tel:2128755375).

COVID-19

Face masks are encouraged, but not required. Proof of COVID-19 vaccination is not required. For more information, please visit Lincoln Center's [Health & Safety page](#).

Restrooms

Men's and women's restrooms with one accessible stall each are located down the hall to the right across from the theater on the 7th Floor. Lincoln Center welcomes guests to use the restroom that most closely aligns with your gender identity or expression, while the law requires gender binary signs.



Food and Drink

Food and drinks other than a closed water bottle are not permitted in the theater.

There is a water fountain between the men and women's restrooms on the 7th floor. It is a bottle-friendly machine that has cups next to it for guests without a water bottle.



A variety of dining and grab-n-go options are available around Lincoln Center. Permanent dining establishments are available including **Lincoln Ristorante** in Hearst Plaza, **The Independent Café** in the David Rubenstein Atrium, and several in David Geffen Hall: **The Coffee Bar** in the Welcome Center, **The Lobby Bar** in the Lobby, and **Tatiana by Kwame Onwuachi**.



For more details about locations, menus, and hours, please visit our [Frequently Asked Questions web page](#).

While You Wait

Guests who arrive early can explore the public areas on campus while they wait.

Located at the southwest corner of Broadway and 65th Street, the **Welcome Center** in David Geffen Hall is a place to receive information about upcoming programs and events across the campus, book tickets, and grab a coffee or light snack from The Coffee Bar throughout the day.



The **Josie Robertson Plaza** features a large fountain and spectacular views of Lincoln Center.



Hearst Plaza is a wonderful area with green space and seating to enjoy the cityscape.



For more information about Lincoln Center programming, venues, and neighborhood recommendations, please visit our website:

<https://www.lincolncenter.org/home>