

Step Afrika! at Alice Tully Hall



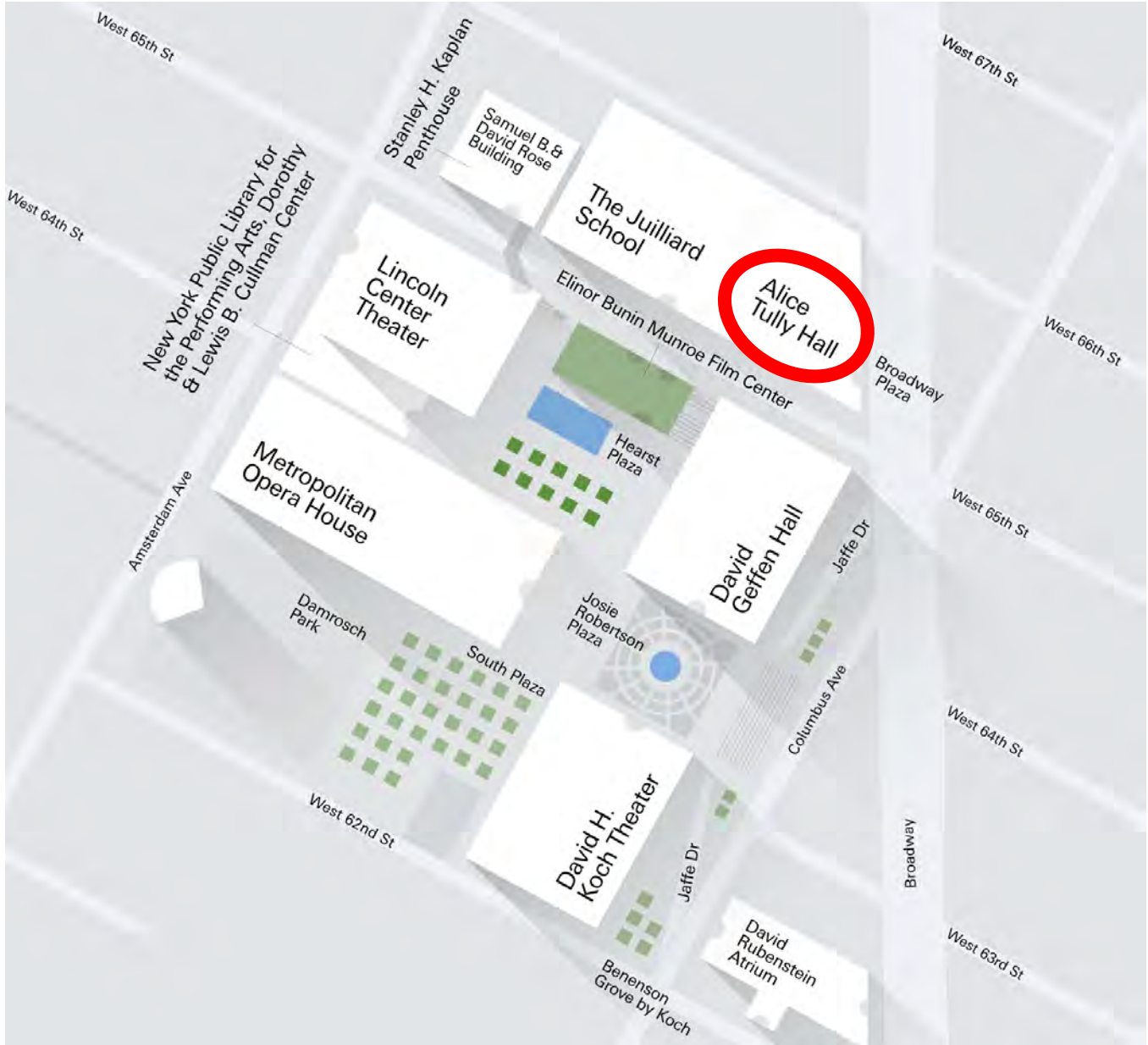
Photo by Keith Major

Step Afrika! blends different African and African American dance styles by integrating songs, storytelling, humor, and audience participation.

This seated and ticketed event has a running time of 1 hour and 15 minutes with no intermission. It is also part of our Relaxed Performance series, open to all, but designed for people with autism, sensory and communication disorders or learning disabilities.

Alice Tully Hall

Alice Tully Hall is located at 1941 Broadway on the West side of Broadway between West 65th and 66th Streets. The accessible entrance is on 66th Street and Broadway.



Getting to Alice Tully Hall

By Subway:

Alice Tully Hall is a short distance from the **1** train at West 66th Street and a slightly longer distance from the **A, B, C, D** or **1** trains at 59th Street—Columbus Circle. Both subway stations are accessible via elevator.



By Bus:

The **M5, M7, M10, M11, M66**, and **M104** bus lines all stop within one block of Lincoln Center.

Access-A-Ride:

If you need an address for Access-A-Ride, use **1941 Broadway**.

Pick-Up/Drop-Off:

West side of Broadway between West 65th Street & West 66th Street.

Parking:

Main Campus Parking (operated by ICON) is available beneath Lincoln Center's plaza. Advanced reservations are recommended.

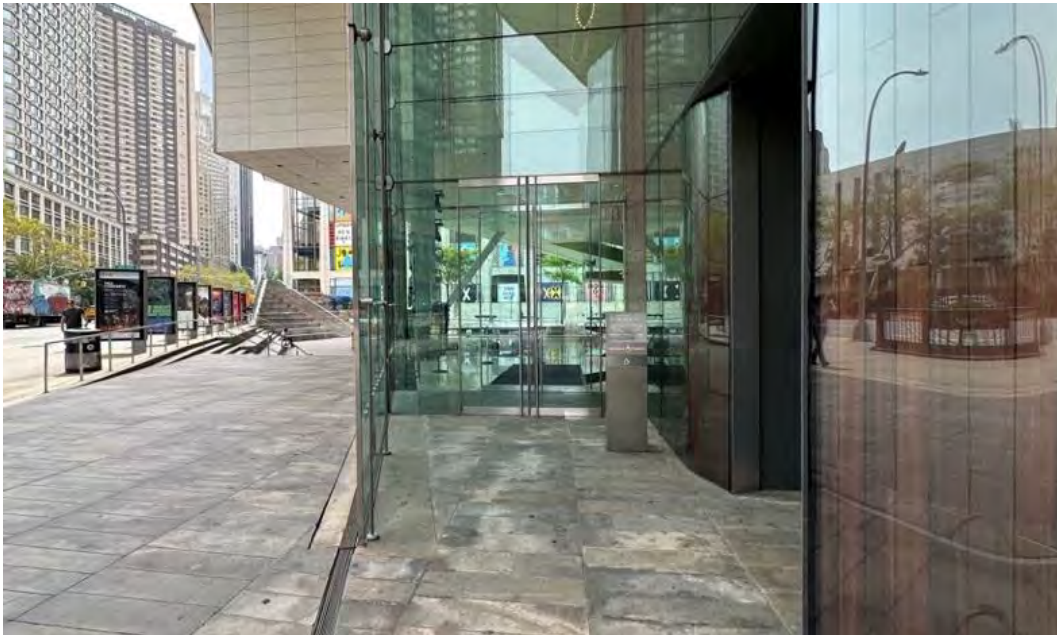
- Entrance for the Reserved Parking Section is on Amsterdam Avenue at 64th Street.
- Designated accessible parking spaces are located in the yellow section of the garage.
- Parking permit and/or sticker must be displayed.
- Advance reservations include a \$5 service charge.
- Height restrictions for vans apply.

To reserve parking, call CenterCharge at 212-721-6500 or visit online at LincolnCenterParking.org

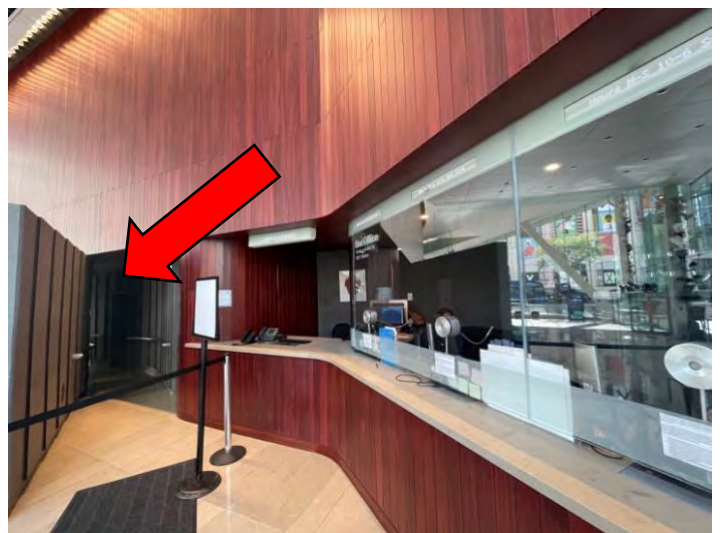
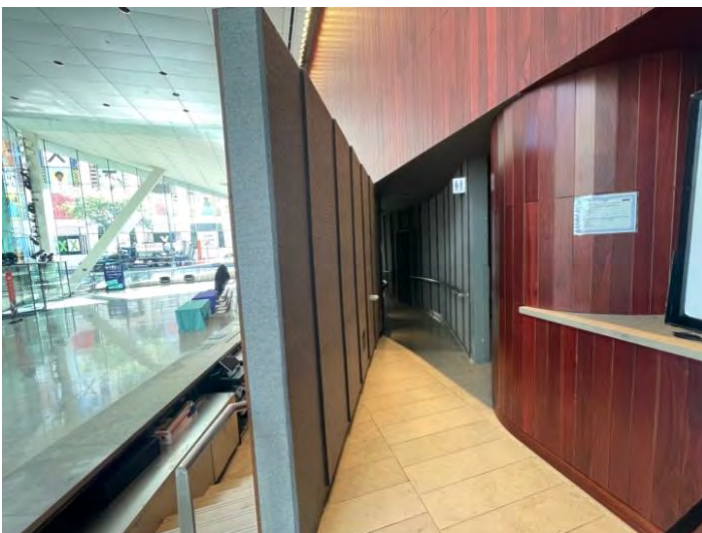


Accessible Entry

The accessible entrance is located on Broadway between West 65th and West 66th Streets, nearest to the box office, with a button available to open automatic doors.



There is a ramp available inside the lobby leading from the box office to the entrance of the theater. There are elevators available inside the theater to reach accessible seating locations in the balcony.

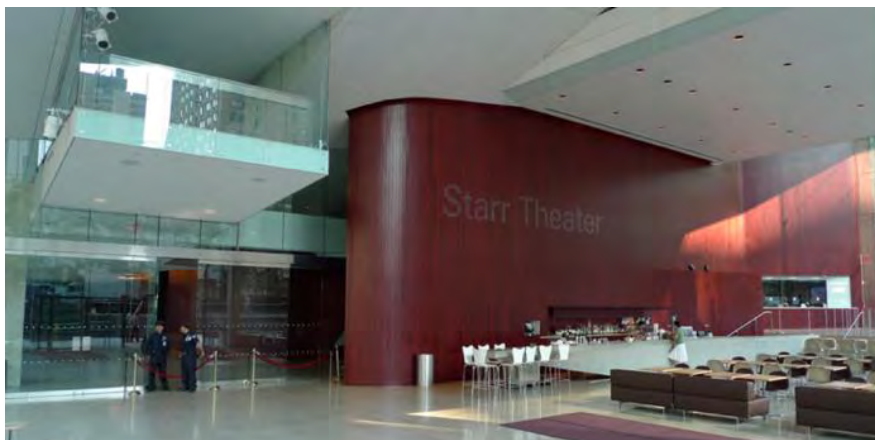


Audience Entrance and Security Gate

Guests will be greeted by Lincoln Center staff and will be directed through a security checkpoint in a quick and touchless manner to reach the Starr Theater. This checkpoint will be located outside of the venue and can be accessed either by stairs or through the lower lobby accessible doors.



If you arrive before doors open for seating, you are welcome to sit in the lobby outside the theater.



The Lobby Bar is open to ticket holders 45 minutes before event start times and during intermission. Water fountains are available in lobby.

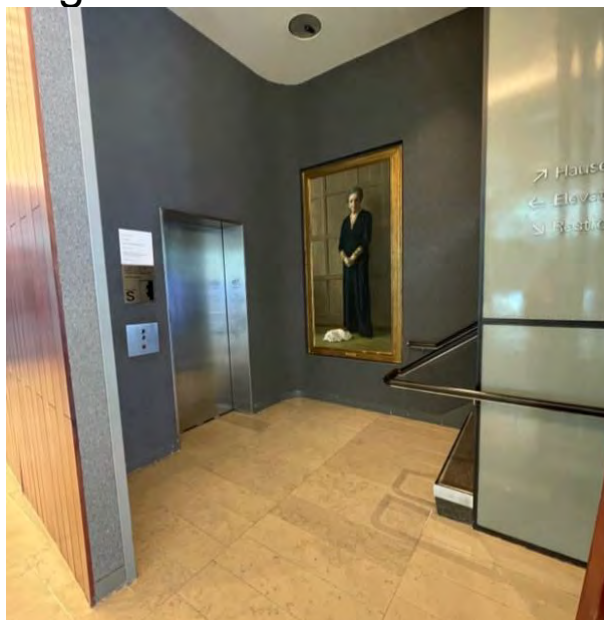
Venue and Accessible Routes

Performances at Alice Tully Hall take place on the Adrienne Arsht stage, inside of the **Starr Theater**. The theater has an orchestra, with long rows of seating and steps between most rows, and a balcony with seating that wraps around three sides of the theater.



This is a ticketed performance with assigned seating.

Elevators are available to reach accessible seating locations. Staff are available to direct guests to their seats.



About the Performance

The company's self-titled production, *Step Afrika!*, introduces audiences to stepping through both a traditional and contemporary lens. *Step Afrika!* incorporates percussive dance styles practiced by historically African American fraternities and sororities; traditional African dances; and an array of contemporary dance and art forms into a cohesive, compelling artistic experience. Performances integrate songs, storytelling, humor, and audience participation.



Photo by Jati Lindsay

The performance will include five works in the program, each featuring dance styles and percussion. The performers are high energy and visually dynamic, with sound levels in the theater at a high volume.

Accommodations

Accessible seats, accessible routes and accessible all gender restrooms available.

FM assistive listening devices with headsets and neck loops available to borrow from the Head Usher Podium. Guests are encouraged to bring their own headphones or standard jack headsets.

A chill out space is located one level above the inner lobby. **Noise-reducing headphones, earplugs, fidgets, and other sensory items** are available to borrow at the Head Usher Podium.

Access Concierge Service: Access Reps, trained to support guests with disabilities, provide 1:1 support for individual guests and their party. **Must be scheduled in advance.** For further information, contact 212 875 5456 or questexperience@lincolncenter.org



 **Access Concierge Service**

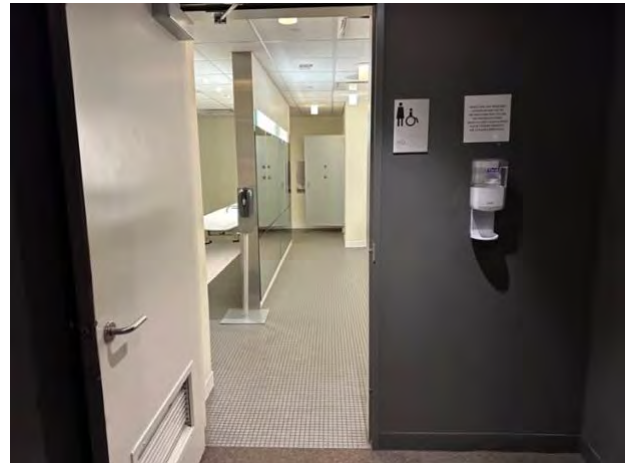
What to Expect at a Relaxed Performance

- Guests are able to enter and leave the audience space throughout the event, as needed
- Guests can vocalize or move throughout audience space
- Fellow audience members are asked to create a no “shushing” zone
- House lights adjusted so that venue is never fully dark
- Attention to bright lights, loud noises, and surprise sensory elements, described in advance
- Chill Out Space for guests to take a break and rejoin performance when ready
- Visual guide, with clear instructions, shared before event
- Noise-reducing headphones and fidgets available to borrow
- Staff members and artists are trained in access and inclusion best practices

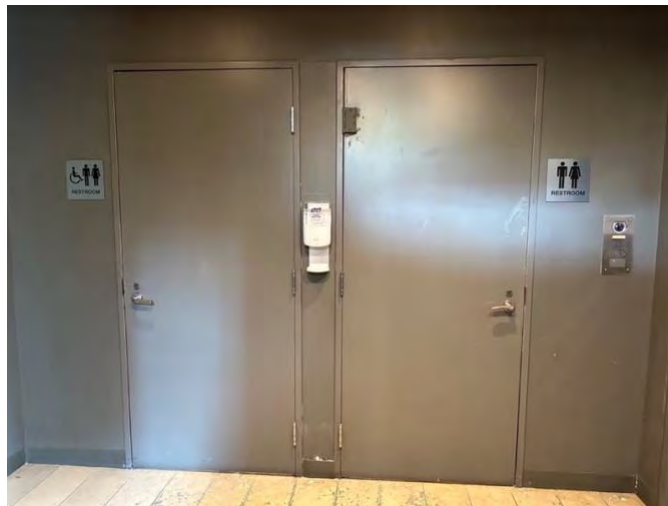
For more relaxed performances, visit lincolncenter.org/relaxed

Restrooms

Gendered restrooms with accessible stalls are located inside the venue, near the orchestra level.



There are also gender-neutral single occupancy accessible restrooms located in the lobby, nearest the accessible entrance and box office.



While You Wait

Guests who arrive early can explore the public areas on campus while they wait. Located across the street at the southeast corner of David Geffen Hall, the **Welcome Center** is a place to receive information about programs and events across the campus, book tickets, and grab a coffee or light snack from The Coffee Bar throughout the day.



Hearst Plaza is a wonderful area with green space and seating to enjoy the cityscape.

