

# Sonic Saturday: Sounds of Space at Lincoln Center

## Relaxed Performance Visual Guide



*Illustration for Tumble Live Presents. Two hosts stand on a ship in a space-themed scene, looking into the distance. Speech bubbles say, "Is that the Tumble Live meteor?!" and "I see that it's headed for New York!"*

Show time: **Saturday, February 07, 2026, at 11:00 am**

Where: **The David Rubenstein Atrium**

Address: **1887 Broadway, New York, NY 10023**

How long: **45 minutes**

Recommended age: **Ages 5+**

This visual guide helps you know what to expect when you come to **Sonic Saturday: Sounds of Space** at Lincoln Center.

# What is a Relaxed Performance?

At Lincoln Center, we believe the arts are for all.

Relaxed Performances are open to everyone, and especially welcoming to people with autism, sensory or communication disabilities, or learning disabilities.

The performance itself stays the same. We make small changes to the theater's social and sensory environment and expectations, so the space feels more comfortable and flexible.

Relaxed Performances can also be helpful for neurodivergent people, families with young children, and anyone who finds traditional theater rules do not work for their needs.

## At this performance:

- You can **enter and leave** the theater during the show, if you need to.
- You can **move, make sound, and respond** to the performance in your own way.
- We ask everyone to help create a **no “shushing” zone**.
- The **house lights are kept on at a low level** so the space is never completely dark.

- If there are **bright lights, loud sounds, or surprising sensory moments**, we describe them in this visual guide. **Please keep reading below.**

We also share key reminders in the pre-show announcement.

- A **Chill Out Space with sensory support materials** is available if you need a break—you can return when you're ready.
- **Noise-reducing headphones** and **fidgets** will be available to borrow.
- Staff are trained in inclusive and accessible practice.

For more relaxed performances, visit [lincolncenter.org/relaxed](https://lincolncenter.org/relaxed).

# About This Performance

What is **Sonic Saturday: Sounds of Space** about?



*Illustration for Tumble Live Presents. Two hosts stand on a ship in a space-themed scene, looking into the distance. Speech bubbles say, "Is that the Tumble Live meteor?!" and "I see that it's headed for New York!"*

Sounds of Space is a live episode of the "Tumble Science Podcast for Kids." (Also known as "'Tumble" or "Tumble Science.")

This show includes science stories, games, and music—all about the sounds of space.

The hosts, Lindsay Patterson and Marshall Escamilla, share stories with help from scientists, and show how science works in real life.

# Sensory Guide

If you need support with sensory moments, you can borrow noise-reducing headphones and fidgets in the lobby or take a break in the Chill Out Space.

Here are some sensory moments you can plan for:



## Sound

- The volume changes during the show. Sometimes it is quiet. Sometimes it is loud.
- You may hear talking, cheering, and some shouting.
- Some sounds may change suddenly (for example: a sudden loud sound, or a sudden quiet moment).
- There are recorded backing tracks. Some include drum sounds.
- Toward the later half of the show, there is a “blast off” moment with a klaxon alarm (a loud horn sound) and a loud lift-off effect.
- There may be other short, surprising sound effects.
- The show will feature a few songs using an acoustic-electric guitar in its opening moments.



## Light

- The house is well-lit. There will be additional lights for the stage.
- You will see projected images (and possibly short video) on a screen during the show.
- Most projections are background images.



## Movement

- Performers may walk through the audience or aisles.
- Performers may speak to audience members and ask for volunteers.



## Emotional content

- This show is playful and sometimes silly. It celebrates science and space.



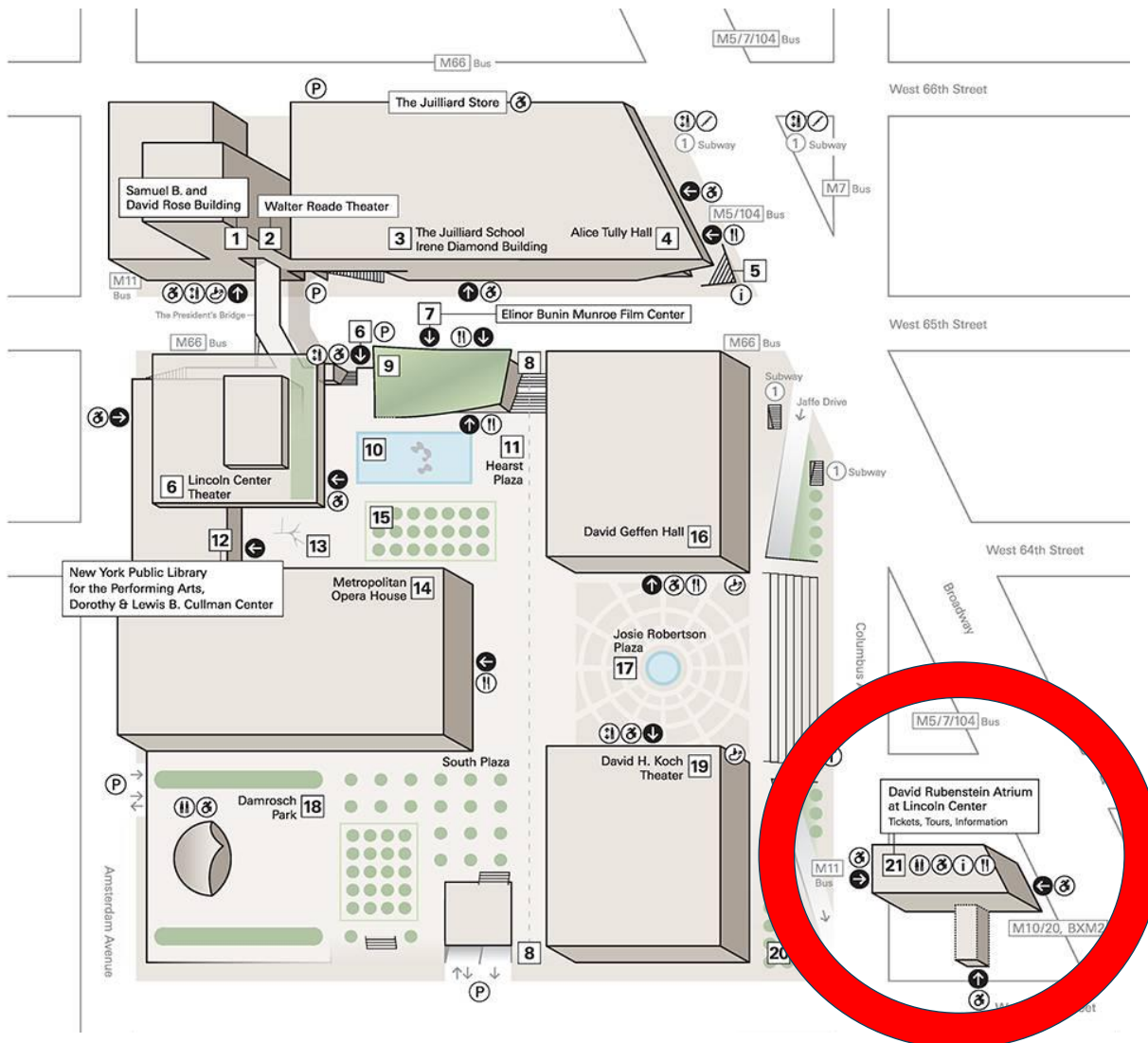
## **Audience participation**

- About the middle of the show, four volunteers may be invited on stage to help create sounds and movements together.
- Later, one audience member may be invited on stage to help use NASA “sonifications” (space sounds made from data) to identify some space objects.
- During the sonification moment, the whole audience is invited to join in from their seats.

It is your choice to participate or stay seated and watch.

# Getting to Lincoln Center/The Atrium

**Address:** The David Rubenstein Atrium is located on Broadway between West 62<sup>nd</sup> and West 63<sup>rd</sup> Street. The exact address is 61 West 62<sup>nd</sup> Street, but please note the audience entrance is on Broadway.





## By Subway

- You can also take **A / B / C / D / 1** trains to **59 St–Columbus Circle** (with shorter distance)
- You can take **1** train to **66 St–Lincoln Center** (with slightly longer distance)
- Both subway stations are accessible via the elevator.



## By Bus

You can take: **BXM2, M5, M7, M10, M11, M20, M66, M104**. (within one block of the David Rubenstein Atrium.)

## Access-A-Ride / drop-off

Access-A-Ride drop-off and pick-up is at: **1883 Broadway**, between 62<sup>nd</sup> and 63<sup>rd</sup> Streets.

## Pick-Up / Drop-off

The main entrance for performances at the Atrium is on Broadway, between 62<sup>nd</sup> and 63<sup>rd</sup> Streets.

# Parking

If you drive, we have parking options for you:

- Lincoln Center's Main Campus Parking Garage is open 24/7.
- You can enter the garage from:
  - West 62nd Street (between Columbus Ave and Amsterdam Ave), or
  - The corner of West 63rd Street & Amsterdam Ave.
- Designated accessible parking spaces are located in the yellow section of the garage. You can reach them from any garage entrance.
- You need display the parking permit and/or sticker.

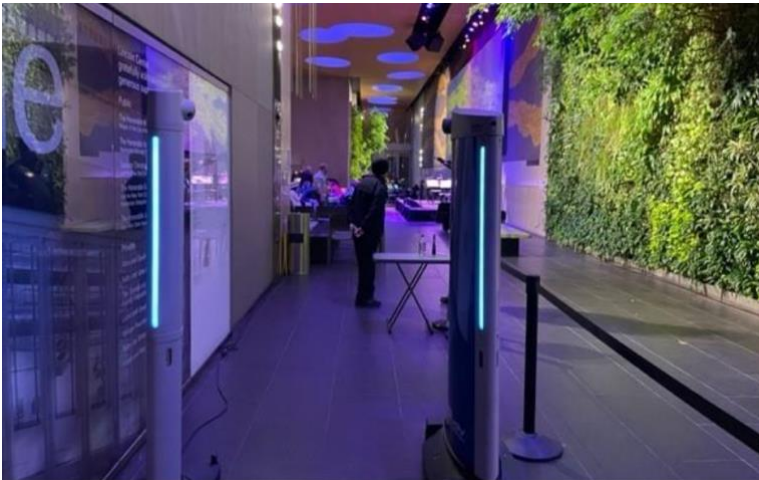


## Entering the building

- You can reach the entrance of the David Rubenstein Atrium on the West side of **Broadway between West 62nd and West 63rd Street** (not on West 62nd Street).
- The Broadway entrance is accessible and has **automatic doors**.

## When You Arrive

### Security check



- When you walk into the David Rubenstein Atrium, you will go through a quick, touchless security check (a scan for weapons).
- You may need to wait in a short line.

---

## Tickets / entry

- You do not need a ticket to attend—admission is free and open to the public.
- Seating is first-come, first-served. **We recommend coming early** if you really want to attend. **If the Atrium reaches capacity, we may not be able to let more people in.**

## If there is a line

- If the Atrium is close to capacity, a line may form outside the Broadway entrance.

If you are unable to stand in line due to a disability, please reach out to Lincoln Center Access Team: [access@lincolncenter.org](mailto:access@lincolncenter.org) or 212-875-5375 for an accommodation.

## Once you're inside

Once you pass security, you can take your time:

### Use the restroom

Accessible, gender-neutral restrooms and changing tables are available inside the Atrium.

Where to find them:

- **First floor:** There is a restroom inside the Atrium on the first level behind the desk.
- **Second floor:** Additional restrooms are on the second floor and are accessible by elevator. You can ask a Lincoln Center staff member for directions.



We welcome you to use the restroom that best aligns with your gender identity or expression.

## Use the Chill Out Space



The Chill Out Space is on the west side of the Atrium, closest to Columbus Avenue.



You can take a break and return when you're ready.



### Borrow sensory tools

- We have noise-reducing headphones, earplugs, fidgets

**You can always ask staff for help anytime**

---

## Food & drinks

- The Independent Café is inside the Atrium.
- You can buy food and drinks, and you may be able to enjoy beverages during the event.

## Find a seat

For this show, you can choose to sit on:

- Armless chairs are arranged in several rows on two sides of the stage.
- There is a rug area in the center where you can sit and/or dance.
- You are welcome to sit in any open seat, sit on the rug, or stand if you prefer.
- You may also sit farther to the sides on the large public benches in the Atrium.
- Some seats may be held for guests with access needs (for example: accessible seating, aisle seating, extra space, or seats with a clear view of the ASL interpreter).
- If you need help finding a seat, or you're not sure where to sit, please ask a staff member.

---

- Leaving and returning:

You are welcome to leave the Atrium during the performance.

If you leave, we cannot guarantee you will be able to come back in. If the Atrium is at capacity, you may not be able to re-enter.



## The Performance Space

- The performance takes place on a raised stage.



- **This stage is for the performers only.** Before and during the show, please do not step onto the stage or touch the performance items next to it.

## Who You'll Meet

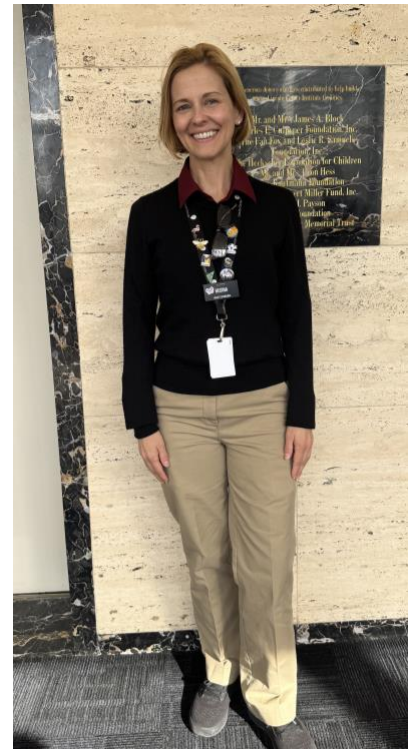
During your visit, you may see:

Guest Experience staff wearing red shirts and khaki pants, with a black name badge on their chest.

## They can help you with:

- Finding the restrooms, or the Chill Out Space
- Finding a seat that works for you (including accessible seating)
- Borrowing sensory tools (headphones, fidgets, etc.)
- Taking a break and returning to your seat

Security staff wearing a dark blue uniform.



# Before / During / After the Show – What You Can Do

## Before the show

- We recommend arriving at the David Rubenstein Atrium about 30 minutes before the show starts (House opens at 9:00am.)
- Once the house is open, you can enter Atrium and take a moment to look around the space, but please stay in the audience seating area. Do not step onto the stage.
- If you arrive too early, you can explore some public spaces on campus:



## Welcome Center at David Geffen Hall

A place to get information about programs, ask questions, book tickets, or get a coffee or light snack.



## Hearst Plaza

An outdoor area with green space and seating where you can sit, relax, or have a quiet moment before the performance.

Staff can help you find these spaces if you are not sure where they are.

## Touch Tour (before the performance)

This performance includes a touch tour. A touch tour is a chance to explore some props and instruments through touch, before the show begins.



When: about 30 minutes before the performance.

Where: at the front of the stage (a staff member will help guide you).

If you would like to join the touch tour, we recommend arriving early and asking staff: “Hi—where should I go for the touch tour?”

## During the show

- You can enjoy the performance in the way that works best for you. You can watch quietly, or you can move and make sound if you need to.
- You can borrow our sensory tools (headphones, fidgets, etc.)
- You can leave the space at any time and come back when you are ready.

## Live captions



- **Live captions** show the words and sounds from the performance in real time.
- To use captions, you will need:
- Your **own phone or device**, and **Wi-Fi connection**.
- To get the access to the live caption, visit:  
[https://www.streamtext.net/player?event=Lincoln\\_Center\\_Atrium](https://www.streamtext.net/player?event=Lincoln_Center_Atrium)
- There will also be a printed QR code onsite that you can scan.

## After the show

- People may clap or cheer at the end.
- You can leave when you are ready.

# Access Services & Accommodations

At Lincoln Center, we offer several access services that may be helpful during your visit:

## Accessible routes and seating

This venue has accessible routes, with designated wheelchair and companion seating.



## Assistive listening

FM assistive listening devices with headsets and neck loops are available for all performances.

You are also welcome to bring your own standard-jack headphones.



## Chill-out space

A chill-out space is on the west side of the Atrium, closest to Columbus Avenue.



## Sensory tools

We offer noise-reducing headphones, earplugs, and small fidgets. You can borrow them from staff.

You can always ask any staff member if you would like help finding these services.

# Feedback

If you would like to share feedback about your experience, you can:

- Scan the QR code
- Fill out the survey at <https://forms.office.com/r/EESB5719dC>
- Talk with a staff member if you would like help sharing feedback.

Your comments help us improve future Relaxed Performances and visual guides.

Visual Guide Feedback – Relaxed  
Performance at Lincoln Center

