

Welcome to *You Are Here:* Live Performances at Lincoln Center!



Photo by Justin Chao

Welcome to the world premiere of *You Are Here*, a sculpture garden and soundscape conceived by Andrea Miller.

To create this installation, the artistic team collected stories from New Yorkers about their experiences from the past year.

Live performances happen from July 24-30. Hearst Plaza opens at 6:00pm for audiences to experience the sound and sculpture installation, with the live performance beginning at 7:00pm.

Andrea Miller

Concept and Choreography

Andrea Miller and Lynsey Peisinger

Co-Directors

Justin Hicks

Composer and Sound Artist

Mimi Lien

Production Design

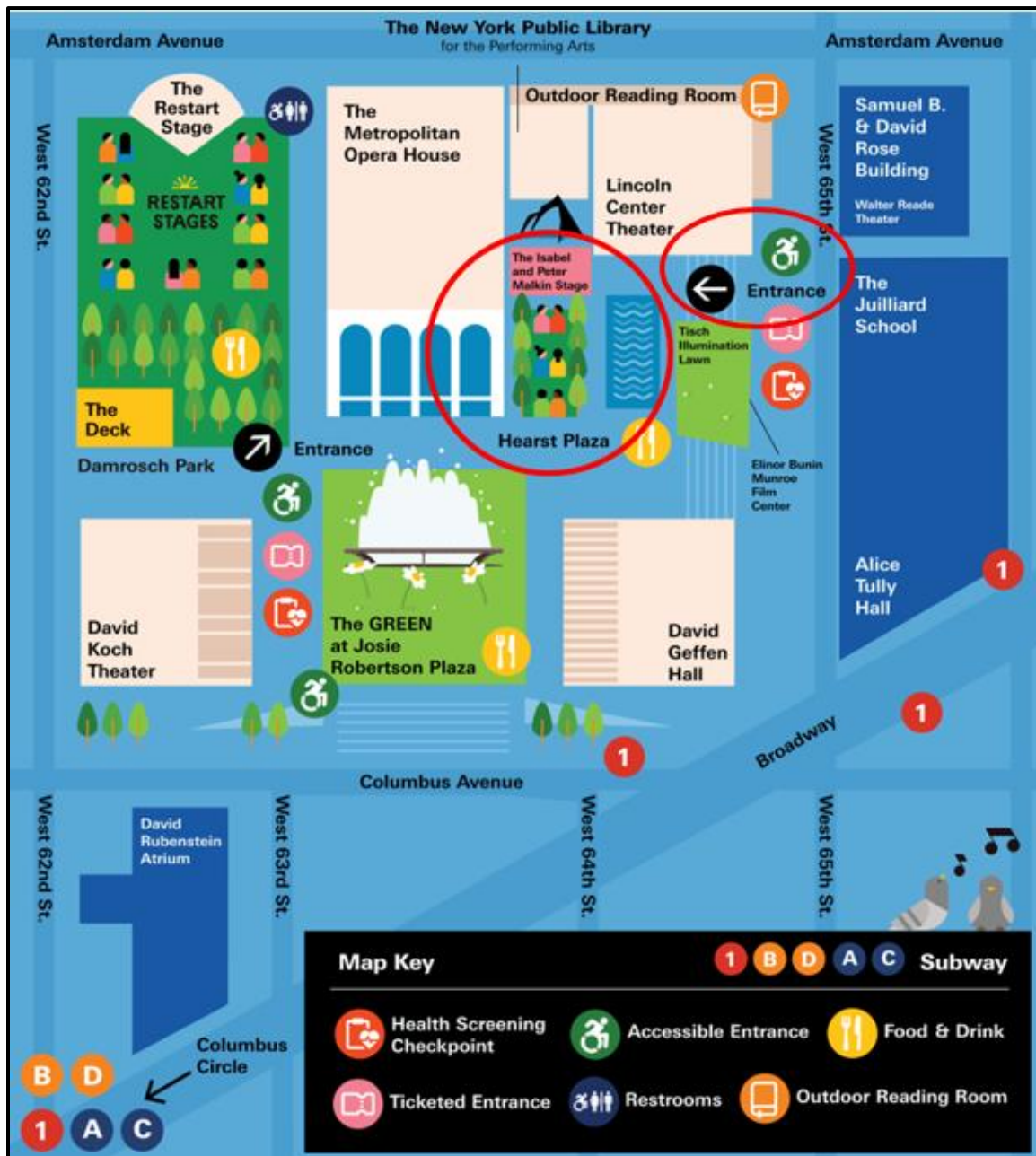
Oana Botez

Costume Design

Iyvon E.

Dramaturg

Getting to Hearst Plaza

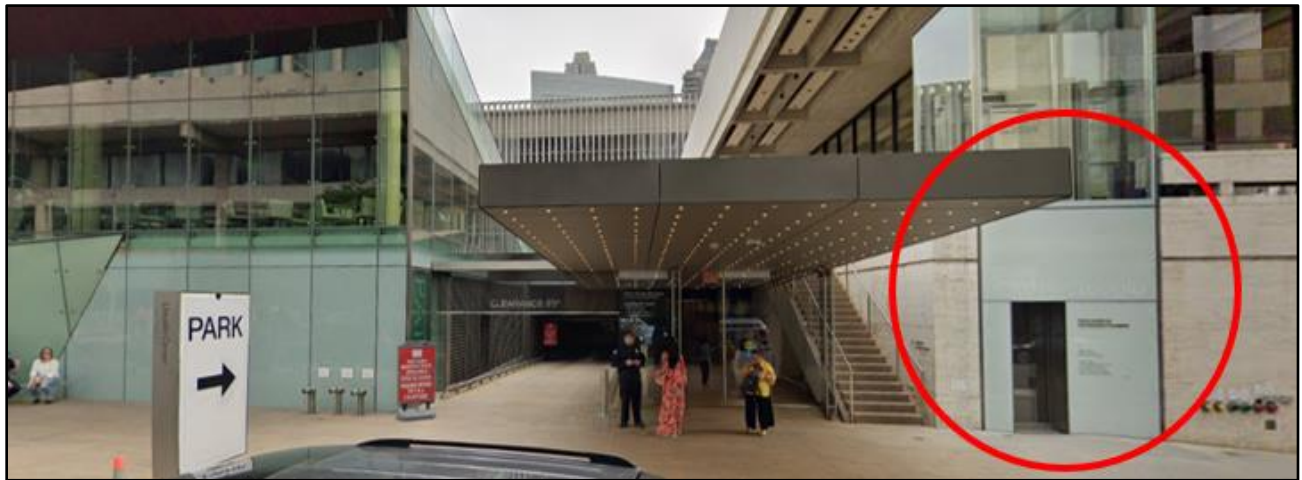


The performance is in **Hearst Plaza**, located between the Metropolitan Opera House and the Laurie M. Tisch Illumination Lawn.

Ticketing Entrance:

The ticketing entrance is located on West 65th Street (between Amsterdam Avenue and Broadway) between David Geffen Hall and the Elinor Bunin Munroe Film Center.

The accessible entrance is the nearby glass elevator, located on West 65th Street between the Elinor Bunin Munroe Film Center and Lincoln Center Theater. The closest address for Access-A-Ride is 144 West 65th Street.



You will be greeted by Lincoln Center staff who will scan your ticket. Then you will walk through the security checkpoint.



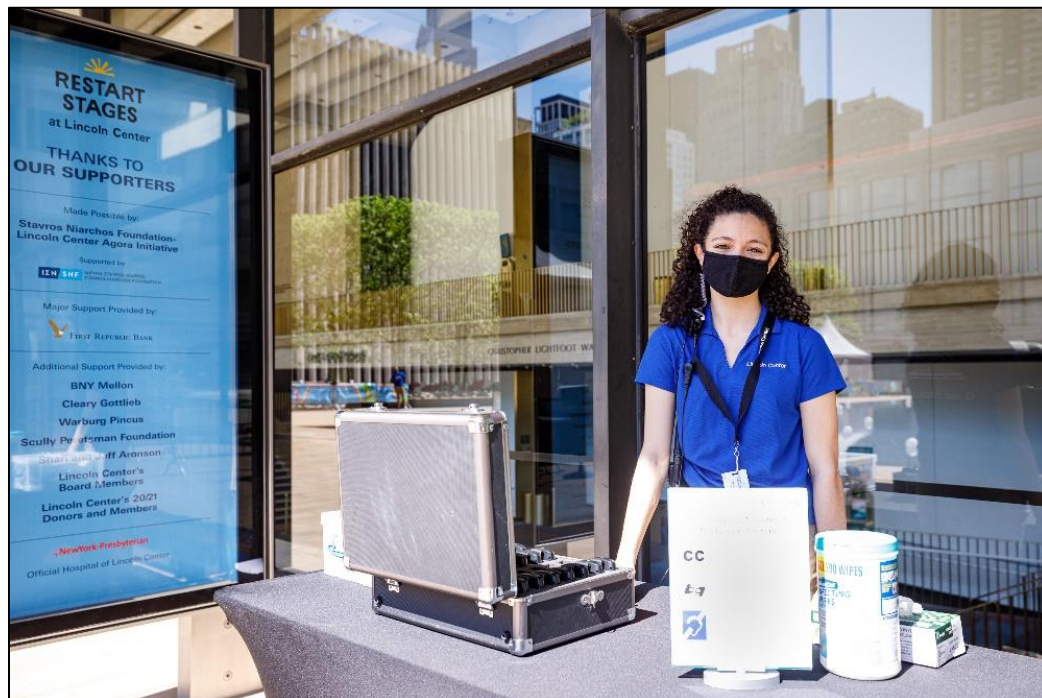
Accessibility:

If you need accommodations you can check at the Accessibility Table, just past the security checkpoint.

We will have Assistive Listening Devices with headsets and neck loops available during the program. If you prefer, you can bring your own headphones with a standard jack.

Earplugs are available if the sound gets too loud.

Live Audio Description is available during the July 27th performance.



What to expect:

You will notice 13 sculptures created by scenic designer Mimi Lien that are located across Hearst Plaza.



Photo by Justin Chao

As you move through the space, you will hear stories from 25 New Yorkers.

This soundscape was created by sound artist Justin Hicks.

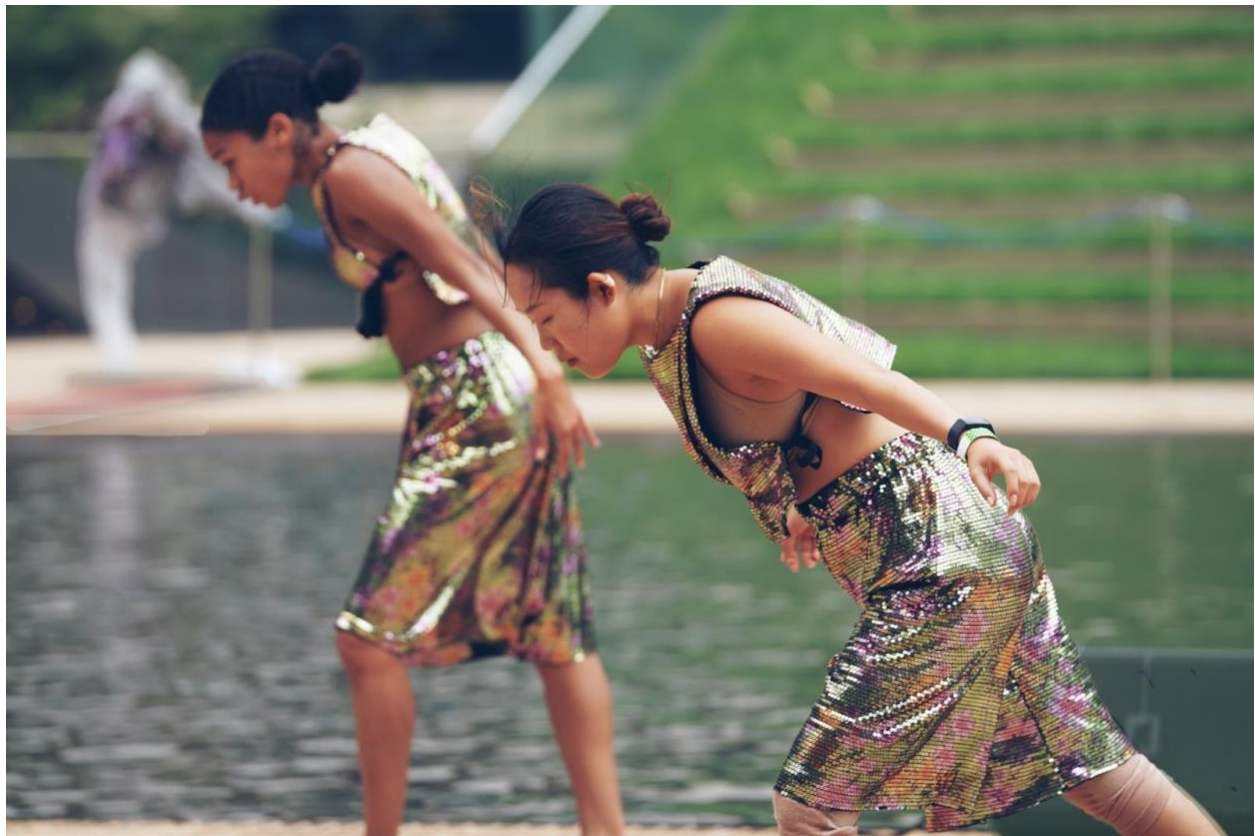
They share stories, thoughts, and feelings from this past year.

During the performance:

You can arrive as early as 6:00pm to look at the sculptures and listen to the soundscape.

You should find a seat by 6:45pm before the performance starts at 7:00pm.

There will be dancers moving throughout the area and you will hear music and speaking during the performance.



Things to Notice:

1. What do you notice about the soundscape?

- What types of sounds are featured?
- Where are the sounds coming from?
- Is there a favorite sound or story that you hear?

2. What do you notice about the performers?

- How do they move while performing?
- Where are they wearing?
- How do they interact with each other?

3. What do you notice about the sculptures?

- Where are they located?
- What are they wearing?
- What shapes and colors do you notice?
- How are they positioned?



Photo by Justin Chao

More ways to experience the installation:

Family Audio Tour

[Click here](#) to listen to a family tour of the installation and try some discussion, drawing, and writing activities.

Sound Installation

[Click here](#) for the audio portraits and transcripts.

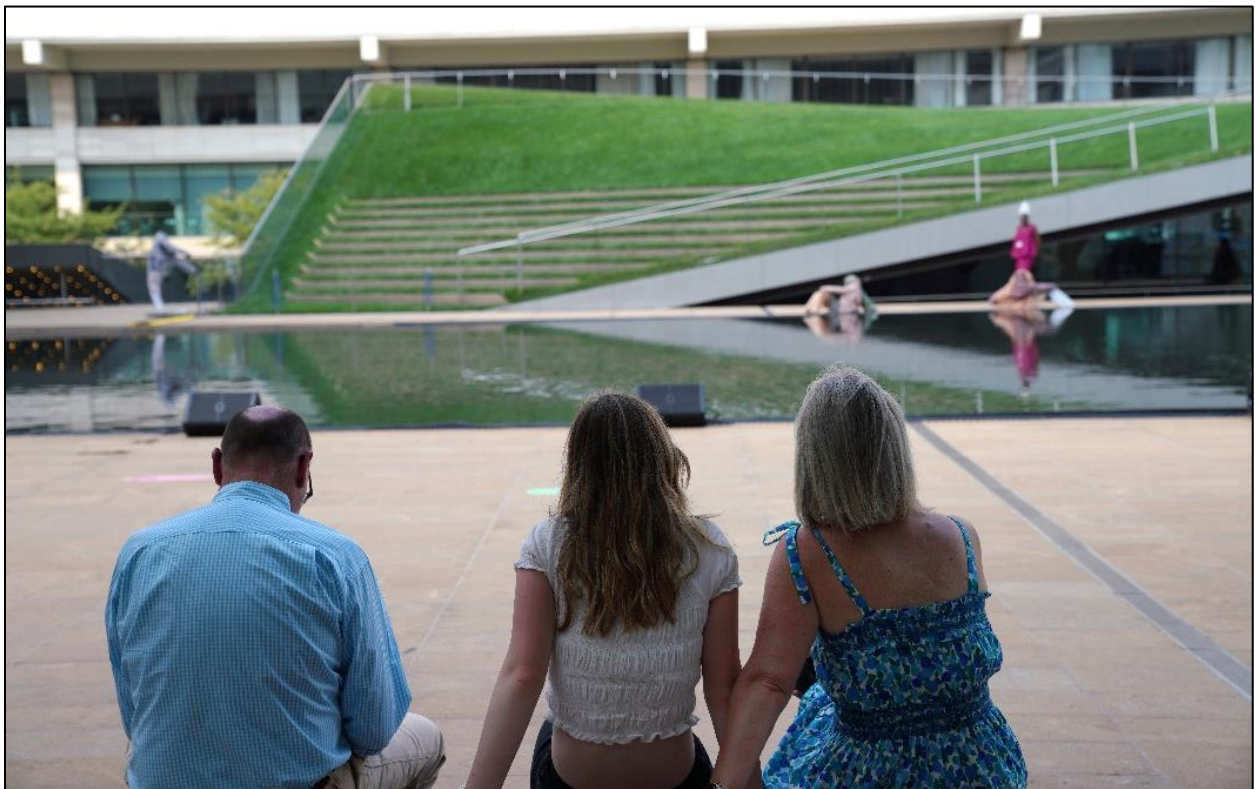


Photo by Justin Chao

Restrooms

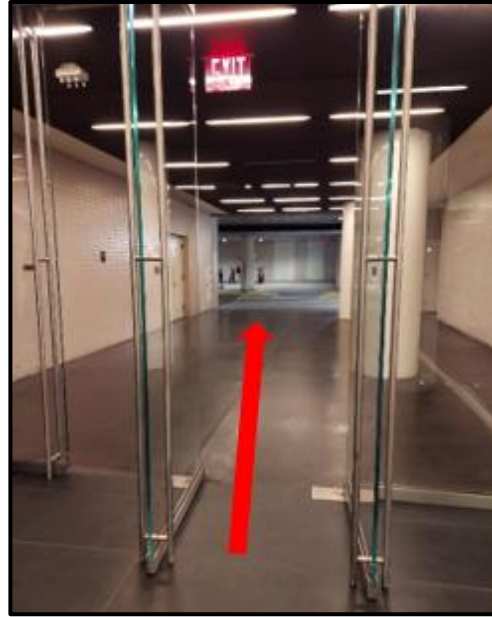
Public restrooms are located on the Concourse Level of Lincoln Center, accessible through the glass doors under the Lincoln Center Theater awning on West 65th Street.



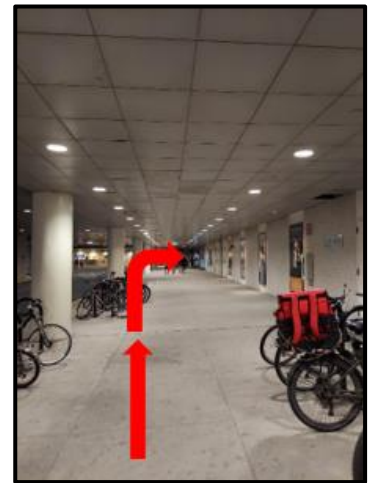
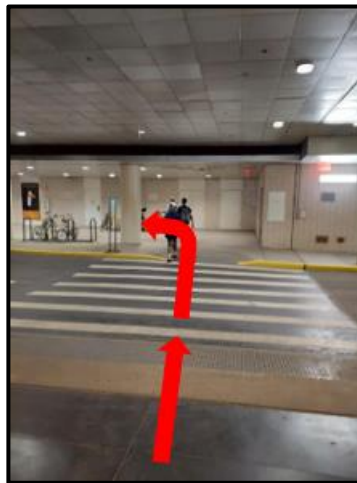
Walk down a long hallway with black floor tiles and large white poles until you reach another set of glass doors.



Walk through the glass doors to the crosswalk (check to make sure there are no cars before crossing).



Cross the street and turn left past some bike racks. Keep walking along the sidewalk until there is a glass wall on the right.



Walk past the glass wall and the restrooms will be on the right.

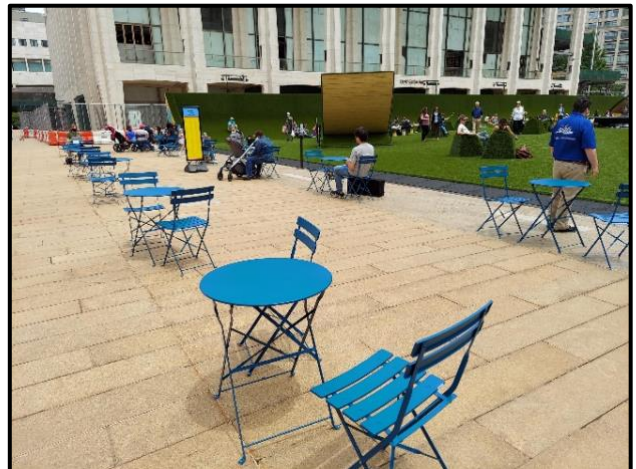


More to Explore

The **GREEN** is an installation of grass-like material surrounding the large fountain in Josie Robertson Plaza.



This space is open to the public and includes a snack bar to get food or drinks before the show. [Click here](#) to learn more about The GREEN.



Photos by Sachyn Mital

The New York Public Library for the Performing Arts has opened an **Outdoor Reading Room and seating area**.

This space is located on the corner of Amsterdam Avenue and 65th Street. Visit the library's website to [learn more](#).



There is more visual art on campus in an installation called **“We Belong Here.”** [Click here](#) to learn more.



Photo: Andrew Kerekes