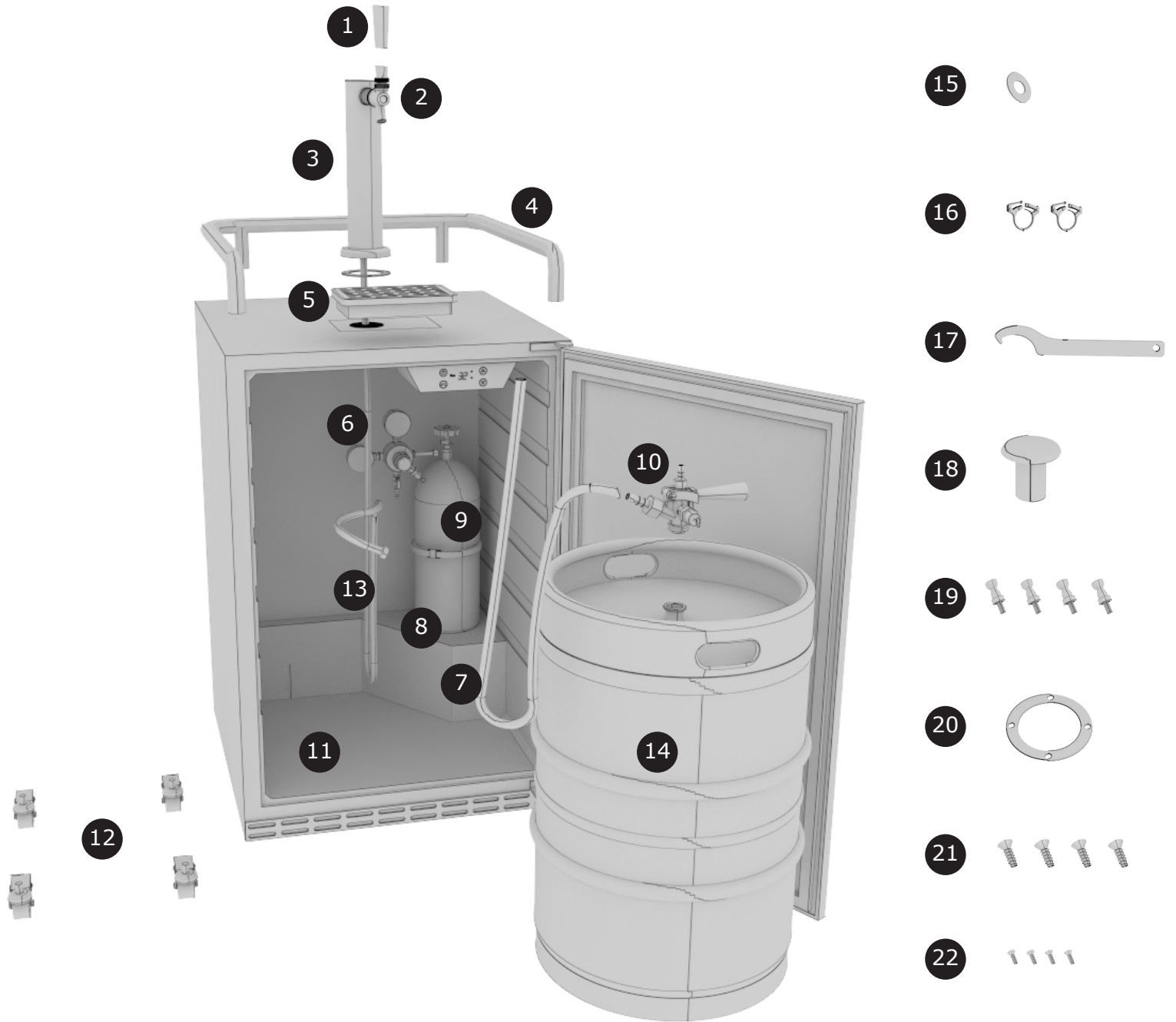


EDGESTAR®

KC7000 Kegerator Installation Guide



1. Faucet Handle
2. Faucet
3. Beer Tower
4. Guard Rail
5. Drip Tray
6. Regulator
7. CO2 Tube

8. CO2 Cylinder (supplied empty)
9. Cylinder Strap
10. American Sankey Keg Coupler
11. Metal Keg Floor Support
12. Casters (x4)
13. Beer Line
14. Half Barrel Keg (not included)

15. Neoprene Washer
16. Hose Clamps (2)
17. Spanner Wrench
18. Tower Plug
19. Rail Post (4)
20. Tower Gasket
21. Rail Screws (4)
22. Tower Screws (4)

Tools Needed:

- Wrench
- Flat Head Screwdriver
- Pair of Pliers/Clamp Crimper

For additional information
visit edgestar.com

1

Install Caster Wheels

Before assembly, make sure to empty the inside of the unit. Carefully lay the unit on its back. Remove the legs and screws around the legs. Attach the casters (#12) into the existing holes at the bottom of the unit using previously removed screws. Then carefully set the unit back upright.

Note: Allow the dispenser to stand in an upright position for 24 hours before plugging in the unit.



2

Remove Plug

Carefully remove the top tower plug (#18) located on the top of the unit by opening the cabinet, and with your hand, push plug through the top of the cabinet from the inside. Use flat head screwdriver as a prying tool if necessary.



3

Install Tower

Mount the tower gasket (#20) by lining it up with the preexisting holes at the top of the unit. Install the tower (#3) by first unraveling the beer line from the bottom of the tower. Feed the beer line (#13) through the top opening that was under the cabinet plug.



4

Secure Tower

Once the beer line is fed into the unit line up the holes at the bottom of the tower and install the four screws (#21).



5

Install Handle & Faucet

Screw the faucet handle (#1) to the beer faucet (#2). Line up the beer faucet to the tower shank at the front of the tower (#3) and tighten the collar with a faucet wrench (#17).



6

Install Railing

Remove the four screws from the top of the worktop and install the rail posts (#19) into the revealed holes. Line up the guard rail (#4) onto rail posts. Use the rail screws (#22) to tighten the guard rail to the posts. Place drip tray (#5) underneath the faucet.



Warning:

CO₂ can be dangerous! CO₂ cylinders contain high-pressured gas, which can be hazardous if handled improperly. Please handle with care.

7 Connect Regulator to Cylinder

Attach the CO₂ regulator (#6) to the CO₂ cylinder (#8) by screwing the regulator nut onto the cylinder valve and tightening with pliers.

Note: A fiber washer is normally required to connect a regulator to a CO₂ cylinder, but the standard regulator provided includes a built-in o-ring.



8 Connect Tube to Regulator

Make sure the shut off valve at the bottom of the regulator is closed (9 o'clock position). Install the CO₂ Tube (#7) to the hose barb at the bottom of the regulator (#6) and secure with a hose clamp (#16).



9 Mount CO₂ Cylinder

Place the CO₂ cylinder (#8) on the step and secure with the cylinder strap (#9).



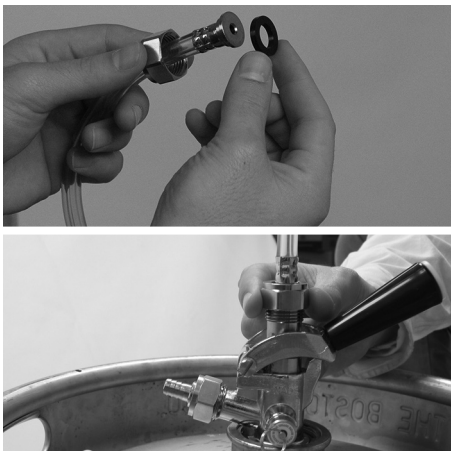
10 Attach Tube to Coupler

Attach the remaining end of the CO₂ tube (#7) to hose barb on the side of the coupler (#10). Secure the tube with a hose clamp (#16).



11 Connect Beer Line

Now connect the beer line (#13) to the keg coupler (#10). Insert the neoprene washer (#15) into the beer line hex nut (the beer line is the line coming from/going to the tower and faucet). Remove the blue rubber protective cap located on top of the keg coupler and screw the nut with the rubber washer to the top of the keg coupler, hand-tighten firmly.



12 Connect Keg Coupler

To connect the keg coupler (#10) to the keg (#14), first make sure the black pull handle of the keg coupler is in the up position (45° angle). Insert the keg coupler into the valve on top of the keg and turn clockwise until it stops about 90° to lock the coupler into place. Now pull the tap handle out (away from the keg coupler (#10)) and push down until it locks into position. Listen for the "click" of the pull handle when it shifts into the final downward position. The keg is now tapped.



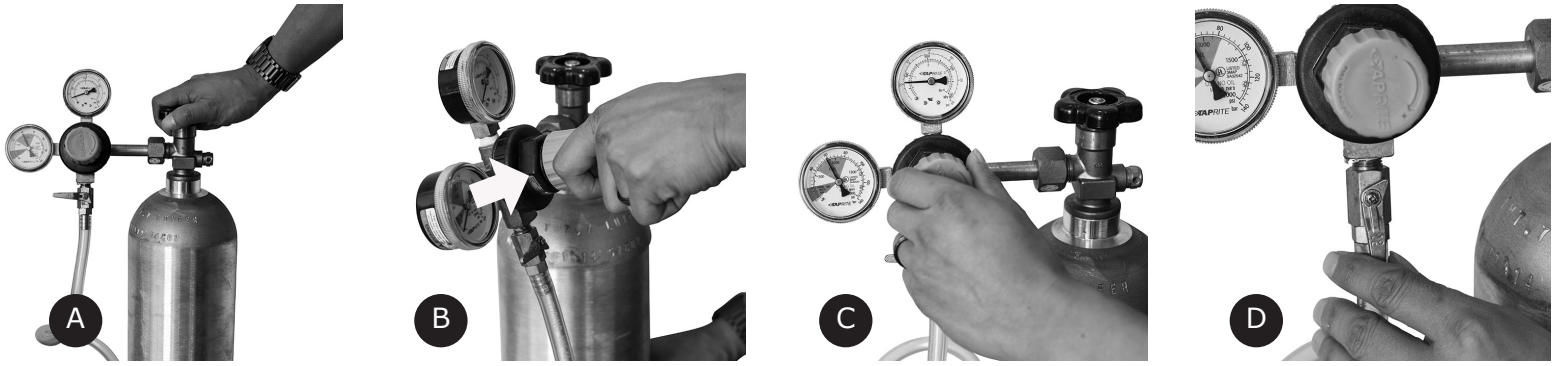
Note:

This manual is intended as a guide for installation. While there are many different ways to install this kit, we recommend you follow these instructions. If you are uncomfortable in your ability to assemble this kit, seek professional assistance.

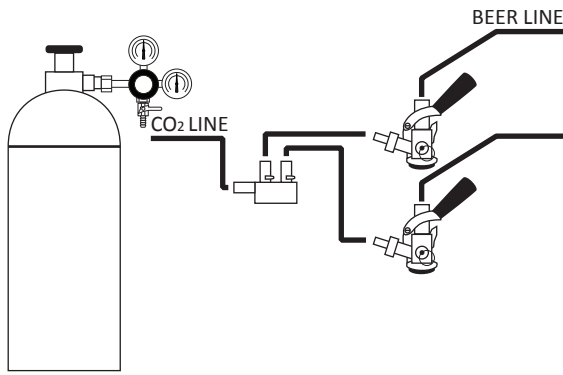
13 Calibrating the Regulator

- (A) With the shut-off valve on the regulator (#6) closed, open the valve on the CO2 cylinder (#8) completely.
- (B) Pull the gray regulator knob towards you to unlock the adjustment knob if it does not turn freely.
- (C) Slowly turn the knob clockwise until the desired pressure is shown on the pressure gauge on the top. By turning the knob clockwise it will increase (+) pressure and counterclockwise will decrease (-) pressure. Under normal circumstances, we recommend setting the regulator at 10-12psi. NOTE: When adjusting pressure from a high pressure to a lower pressure, you will need to release the higher pressure out by pulling the manual pressure release valve ring located on the side of the coupler (#10).
- (D) Once the desired pressure is set, open the shut-off valve by turning the lever down (6 o'clock position or parallel to the CO2 tube). Gas should now be flowing from the regulator to the keg coupler. You will hear the keg pressurizing. The output needle will drop momentarily while the pressure is equalizing. Then, the needle will return to the point you set it at.

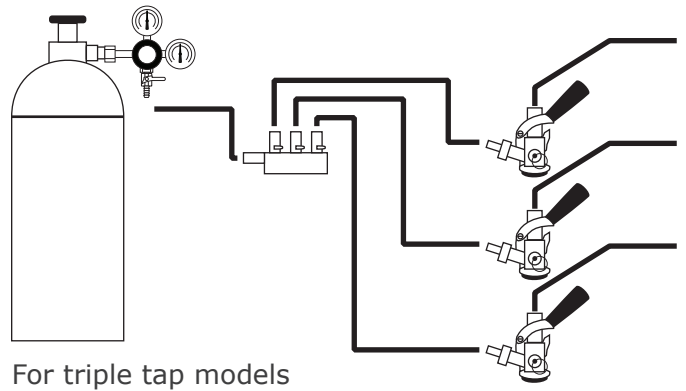
NOTE: Other conditions, such as altitude, beer type, and temperature may require additional adjustment. It is always wise to follow up any adjustment to the regulator with a brief pull of the pressure release valve ring on the regulator or coupler to ensure an accurate output reading.



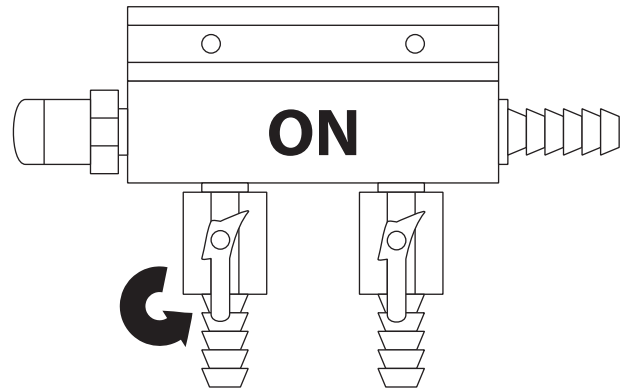
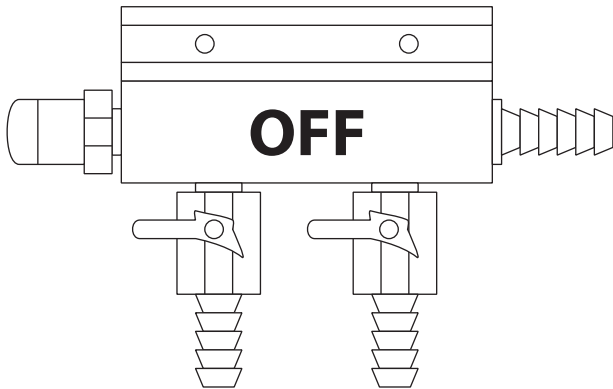
Multiple Keg Configurations



For dual tap models



For triple tap models



Warning:

This guide is provided for informational purposes only. It is provided as a supplement to the owner's manual.

Please refer to the owner's manual for a full discourse on installation, usage and maintenance. If you have any questions about the installation of this appliance, feel free to contact EdgeStar service at 866.319.5473 or consult a qualified installer. Neither the manufacturer nor its distributors shall be liable for any incidental, consequential, indirect, special, or punitive damages of any nature, including without limitation, lost revenues or profits, or any other damage whether based in contract, tort, or otherwise.

Co2 cylinder comes empty due to HAZMAT restrictions. It will need to be filled locally at any air/gas supplier prior to use.