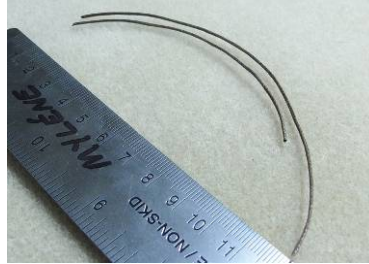


Faux Barbed Wire

Materials required:
Brown beading cord
White glue
Sharp scissors
Lumiere paint: Metallic Silver, Pewter and Metallic Rust



Cut a 25cm length of beading cord.



From this piece, cut a 10cm length and set it aside.



Coat your finger tip with white adhesive....



and run it along the 15cm length of cord, coating on all sides



Hold the cord between your fore fingers and thumbs and then twist it tightly by turning one hand towards yourself and the other hand away.



Keep twisting until it begins to twist back onto itself.



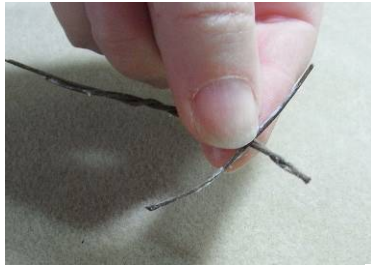
Twist a little bit more. The glue will stop it from untwisting. Set this piece aside.



Cut the 10cm length in half.



Set one piece aside and coat the other piece with a thin layer of adhesive.



Wrap it once around one end of the twisted cord.....



so that it creates a barb.



Repeat with the second length of cord wrapping it around the other end of the twisted cord.



Allow the adhesive to dry clear



Trim all cut ends at a sharp angle so that the barbs look sharp.



Use your finger to randomly paint on Lumiere paint to create the rusty, weathered look associated with barbed wire.



Faux barbed wire – ultra light, no sharp points and absolutely no rust to transfer to your project.



And here's a finished sample – a rustic card featuring bronze lizards, corrugated iron, an earthy cobbled background and faux barbed wire.



Make a long piece of barbed wire and turn it into a wrap bracelet sprinkled with glass heart beads and silver balls.

© 2009 Myléne Hillam
Mill Lane Studio