

HOCKEY CATALOGUE

2018/19

TK

Grays

gryphon

OSAKA

PRINCESS
SPORTSWEAR

adidas

**Sportsmans
Warehouse**

winning starts here!



Junior
T-14 6 Star
619⁹⁰

• 10% carbon • Sizes: 30, 32 & 34" • Selected stores



Junior
A5 6 Star
749⁹⁰

• 20% carbon • Size: 35" • Selected stores



Junior
T-14 7 Star
899⁹⁰

• 30% carbon • Size: 34 & 35"



Senior
3 Star
1 399⁹⁰

• 20% carbon • Size: 37,5"



Senior
A5 6 Star
1 799⁹⁰

• 70% carbon • Excellent balance between power and control
• Size: 37,5"



Senior
5 Star
2 349⁹⁰

• 60% carbon • Size: 37,5" • Selected stores



Senior
7 Star
2 799⁹⁰

• 100% carbon • Size: 37,5" • Selected stores



Senior
Carbon Braid
4 399⁹⁰

• 100% carbon • Size: 37,5" • Selected stores



Junior & Senior
Cub
269⁹⁰
each

- Wood • Junior sizes: 28, 30, 32 & 34"
- Senior size: 36"



Junior
Chrome
599⁹⁰

- Fibreglass and kevlar • Sizes: 34 & 35"



Junior
Taboo
899⁹⁰

- Carbon, fibreglass and aramid
- Junior curve to get the best comfort and skills out of your stick
- Size: 35,5"



Senior
Atomic Chrome Samurai
1 399⁹⁰

- Carbon, fibreglass and kevlar • Extra low curve • Sizes: 36,5 & 37,5"



Junior & Senior
Slasher
449⁹⁰
each

- Fibreglass • Skills development for young and novice players
- Sizes: 28, 30, 32, 34, 35 & 36"



Senior
Predator
649⁹⁰
each

- Fibreglass • Skills development for young and novice players
- Sizes: 36,5 & 37,5"



Senior
Solo Chrome
1 199⁹⁰

- Fibreglass and kevlar • Low pro curve • Sizes: 36,5 & 37,5"



Senior
Elan Chrome DII
1 599⁹⁰

- Carbon, fibreglass and kevlar • Extra low curve • Size: 37,5"
- Selected stores



Senior
Diablo Chrome
T-bone
2 199⁹⁰

- Carbon, fibreglass and kevlar • Size: 37,5" • Selected stores



Senior
Taboo Blue Steel
3 299⁹⁰

- Carbon, fibreglass and kevlar
- Samurai extra low curve and control groove • Size: 37,5" • Selected stores



Senior
Tour Deuce II
3 499⁹⁰

- Carbon, fibreglass, kevlar and silicone • Deuce II extra low curve
- Size: 37,5" • Selected stores



Senior
Tour Pro
3 499⁹⁰

- Carbon, fibreglass, kevlar and silicone • Pro low curve • Size: 37,5"
- Selected stores



Senior
Tour Samurai
3 499⁹⁰

- Carbon, fibreglass and kevlar • Extra low curve and control groove
- Size: 37,5" • Selected stores



Junior & Senior
Alpha
399⁹⁰
each

- **Wood composite** • Ultrabow blade for developing core skills
- Senior size: 36,5" • Junior sizes: 28, 30, 32, 34 & 35"



Senior **GX 2000**
699⁹⁰
each

Junior **649⁹⁰**

- **20% carbon** • For developing core skills and ball striking
- Bow shape: ultrabow
- Senior sizes: 36,5 & 37,5"
- Junior sizes: 32, 34 & 35"



Senior
GX 3500
1 299⁹⁰

- **30% carbon** • For developing core skills and ball striking
- Bow shape: dynabow • Sizes: 36,5 & 37,5"



Senior
GR 4000
1 799⁹⁰

- **45% carbon** • Ideal for stick handling and improved 3D skills
- Bow shape: jumbow • Sizes: 36,5 & 37,5"



Senior
GR 6000
2 199⁹⁰

- **65% carbon** • Ideal for stick handling and improved 3D skills
- Bow shape: jumbow • Size: 37,5"



Senior
GR 10000
2 599⁹⁰

- **95% carbon** • Dynabow blade is ideal for stick handling • Size: 37,5"
- Selected stores



Senior
KN 8000
3 499⁹⁰

- **95% carbon** • Ideal for drag flicking, 3D skills and backhand hits
- Size: 37,5" • Selected stores



Senior
KN 12000
4 299⁹⁰

- **95% carbon** • Designed for backhand hits
- Bow shape: probow extreme • Size: 37,5" • Selected stores



• **Wood composite** • Suitable for beginners
• Sizes: 26, 28, 30, 32, 34 & 36"

Junior
Maxi
129⁹⁰
each
Senior
139⁹⁰



• **90% fiberglass and 10% aramid** • Size: 36,5"

Senior
SGX 3.7 Goalie Animate
749⁹⁰



• **90% carbon and 10% aramid** • Advanced matrix construction for greater output
• Size: 37,5"

Senior
SCX 3.1 Innovate
2199⁹⁰



• **90% carbon** • Improves pickup when flicking due to concave groove
• Size: 37,5" • Selected stores

Senior
SCX 1.2 Illuminate
3 499⁹⁰



• **100% fiberglass** • Advanced matrix construction for greater output
• Sizes: 28, 30, 32, 34 & 35"

Junior
SCX 3.35
599⁹⁰



• **50% carbon, 10% aramid and 40% fiberglass** • For the utmost control
• Size: 35" • Selected stores

Junior
SCX 1.35
1 199⁹⁰



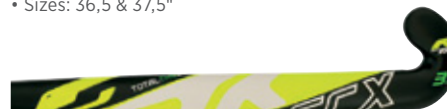
• **10% carbon, 10% aramid and 80% fiberglass**
• Ideal for upright playing style when starting out
• Sizes: 36,5 & 37,5"

Senior
SCX 3.5 Activate
849⁹⁰



• **30% carbon, 10% aramid and 60% fiberglass**
• Advanced matrix construction for greater output
• Sizes: 36,5 & 37,5"

Senior
SCX 3.4 Innovate
999⁹⁰



• **70% carbon** • Offers all-round assistance to 360 degree skillset
• Sizes: 36,5" & 37,5"
• Selected stores

Senior
SCX 3.2 Innovate
1 799⁹⁰



• **80% carbon** • Offers all-round assistance to 360 degree skillset • Size: 37,5"
• Selected stores

Senior
SCX 1.3 Innovate
2 999⁹⁰



• **100% carbon** • For dribbling, aerial skills and drag-flicking • Size: 37,5"
• Selected stores

Senior
SCX 1.1 Accelerate
3 899⁹⁰



OSAKA 重畳



Junior
1 Series PTK
799⁹⁰

- 98% fibreglass • Bow shape: standard bow • Sizes: 34 & 35"
- Selected stores



Senior
Pro Tour Deshi Limited
1 449⁹⁰

- 10% carbon • Pro bow is ideal for modern, technical playstyles • Size: 36"
- Selected stores



Senior
3 Series
2 449⁹⁰

- 70% carbon • For slap-hitting, drag-flicking and 3D ball control • Size: 37,7"
- Selected stores



Senior
Pro Tour Limited
4 399⁹⁰

- 98% carbon • For drag-flicking and control • Bow shape: proto bow
- Size: 37,5" • Selected stores



Senior
Pro Tour Deshi Silver
999⁹⁰

- 98% fibreglass • For great ball control and slap-shooting
- Bow shape: standard bow • Size: 36,5"
- Selected stores



Senior
Concept Series Flower
1 799⁹⁰

- 30% carbon and 65% fibreglass • Slimmer and all-round faster profile
- Bow shape: mid bow
- Sizes: 36 & 37" • Selected stores



Senior
5 Series Dazzle
3 199⁹⁰

- 90% carbon and 5% fibreglass • For 3D ball control and shooting
- Bow shape: pro bow • Size: 37,5"
- Selected stores



Junior & Senior
LX24 Compo 6
799⁹⁰
each

- 95% fibreglass • Reinforced main-impact areas • Senior sizes: 36,5 & 37,5"
- Junior sizes: 32, 34 & 35" • Selected stores (junior)



Senior
LX24 Compo 5
1 199⁹⁰

- 15% carbon • AdiBow 24 • Sizes: 36,5 & 37,5"



Senior
LX24 Compo 2
1 899⁹⁰

- 50% carbon and 45% fibreglass • Reinforced main-impact areas
- Sizes: 36,5 & 37,5"



Senior
DF24 Carbon
2 499⁹⁰

- 90% carbon • 3D head shape for optimal power and control • Sizes: 36,5 & 37,5"



Senior
TX24, LX24 & V24 Carbon
2 299⁹⁰
each

- 90% carbon
- Reinforced main-impact areas
- Sizes: 36,5 (TX24) & 37,5"
- Selected stores (LX24 & V24)



Senior
Carbonbraid 2.0
3 999⁹⁰

- 100% carbon • Fully braided for strength • Size: 37,5" • Selected stores



Boots



Men's
Goletto VI TF

699⁹⁰
per pair

Boys' **649⁹⁰**
• Sizes: 2 - 5

- Synthetic leather upper • Superior comfort and cushioning
- Grippy outsole



Women's & Men's
Flash

749⁹⁰
per pair

Junior **679⁹⁰**
• Sizes: 2 - 5

- Synthetic upper • Support for stable fit
- Grippy outsole • Sizes: 3 - 6



Men's
SRS.4

1 299⁹⁰
per pair

- Breathable air mesh • Excellent grip
- Comfortable cushioning



Girls' & Boys'
Hockey Boots

1 099⁹⁰
per pair

- Synthetic upper • Support for stable fit
- Grippy outsole • Sizes: 3 - 6



Women's & Men's
GEL-Lethal MP7

1 399⁹⁰
per pair

- Excellent grip and 360° pivot point
- Toe protection • GEL cushioning



Unisex
Zone Dox

1 899⁹⁰
per pair

- Very lightweight • Grippy outsole
- SPRINTFRAME construction provides stability and speed



Hockey Bags



Grays

GX150
899⁹⁰

- Holds up to 2 sticks
- Zonal cushion back panel



TK

LBX 3.6 Hockey Backpack
599⁹⁰

- 45 x 28,5 x 23 (d) cm



PRINCESS
SPORTSWEAR

Hockey Backpack
559⁹⁰

- Heavy-duty, multipurpose bag
- Various compartments



gryphon

Little Mo
620⁰⁰

- Heavy-duty, water resistant 600D nylon
- Multiple pockets for gear and accessories



gryphon

Slim Jim Hockey Bag
279⁹⁰

- Water-resistant
- Stick compartment and personal pocket
- 98 x 13 x 4 (d) cm



Grays

GR300 Hockey Bag
449⁹⁰

- 100 x 15 x 10 (d) cm



gryphon

Big Paul Double-strap Hockey Bag
549⁹⁰

- 98 x 20 x 16 (d) cm



TK

LSX 3.3 Hockey Bag
599⁹⁰

- 96 x 18 x 16 (d) cm



Grays

GX7000 Hockey Bag
999⁹⁰

- 95 x 25 x 18 (d) cm
- Selected stores



Equipment



Hockey Balls



Match Hockey Balls

54⁹⁰
each

- Match quality
- Hollow core
- PU material-soft feel on stitch
- Dimple and smooth versions



OBO

Order OBO protective goalkeeping gear in store

- ROBO:** for players at national and senior level
- CLOUD:** for the serious player
- YAHOO:** for fast track improvers
- OGO:** entry level



Tyro Shinguards

69⁹⁰
per pair

- Various colours



Moulded Shinguards

159⁹⁰
per pair

- Hard plastic with foam lining
- Sizes: XS - L
- Various colours



Shield Shinguards

239⁹⁰
per pair

- High-impact plastic with high-density foam lining
- Soft padding
- Sizes: XS - L



Anatomic Hockey Glove

229⁹⁰

- High-density foam protection
- Available in right and left hand
- Sizes: XS - L



G Mitt Hockey Glove

319⁹⁰

- Padded lycra with silicone palm
- Available in black only
- Available in right and left hand



Assorted grips

FROM 69⁹⁰





Hockey Sticks

Everything You Need To Know

Before you head out onto the field to start practicing your stick handling, you have to choose the right hockey stick, which can be a difficult decision. Although colour and style might seem like the most important part of buying a stick, the feel and performance of the stick is much more important.



Weight

The weight of the hockey stick is usually chosen based on personal preference or position. Based on weight, different sticks tend to work for different positions.

Extra Light-weight [510g - 550g]

Designed for forwards. Lightweight stick which does not interfere with or hold back a players rapid stick work.

Light-weight [540g - 600g]

Designed for midfielders. Light-weight stick that benefits both defensive and offensive manoeuvres.

Mid-weight [590g - 630g]

Designed for backs. The mid-weight sticks provide power and distance behind your shots, making a stick this heavy perfect for clearing the ball.

Essentially the final decision comes down to the individual's comfort and feel. Currently due to the demands of the modern game very few manufacturers offer sticks in the heavy weight range (640g-740g). If in doubt we would always recommend that you choose the lighter option, due to modern day materials used.



Head Shape

Maxi Head: The Maxi Head shape is used by 95% of players. The Maxi fills the demand for a head shape that provides a bigger control area, on the reverse playing side. Due to the additional increase in surface area, the sweet spot improves. This creates maximum power in hit shots and passes.

FIH's specifications allow the face of the stick to deviate from a flat plane by up to 4mm. Due to this rule manufactures have developed innovative features on the head face to aid players with a wide range of 3D skills

Hook Head: Used by a small percentage of players with an upright playing style looking for an even greater surface area on the reverse stick side. Some forwards who pass and receive the ball at pace (and therefore usually more upright) still favour this option.



Shaft Bow

The size and position of the bow in the shaft is the personal preference of the player. The bow in the shaft will be limited to a maximum of 25mm. Players who drag flick or throw a lot of overheads often use a stick which has a very low bow position and a thin head. A bow which has it's apex further up the shaft is more suited for all round play.



Size and Length

The size and length of the stick you use completely depends on the length of each individual player's body. Field hockey sticks range from about 28" to 38" long, and having the proper stick length can drastically affect your game. If your stick is too long, you may end up undercutting the ball or making hard contact with the ground, causing the stick head to fracture. If your stick is too short, you may be bending down too much which can cause serious long term back problems.

When choosing the perfect stick for you, place the base of the stick on the ground and make sure the stick is straight. Hold the stick next to your leg and check to make sure the top of the stick is right along your hip joint.

Stick Size Inches	Height of the Player	
	Metres	Feet
28	up to 1.14	up to 3'9"
30	1.14 - 1.22	3'9" - 4'
32	1.22 - 1.45	4' - 4'9"
34	1.45 - 1.53	4'9" - 5'
35	1.53 - 1.63	5' - 5'4"
36.5	1.63 - 1.70	5'4" - 5'7"
37.5	1.70 - 1.83	5'7" - 6'
38.5	Over 1.83	Over 6'

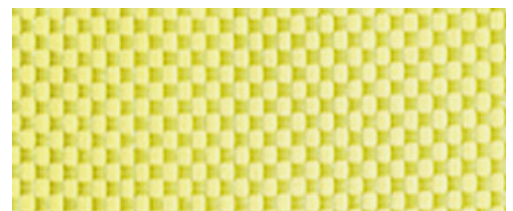
Material

Although traditionally made of wood, field hockey sticks are now made from a combination of a number of different "space-age" materials including fibreglass, carbon fiber and Kevlar.

Fibreglass: Is a cheap material, made from fine strands of glass and is often woven together and combined with a resin to increase strength and stiffness. Sometimes applied to wooden sticks to limit wear to areas such as the head.



Kevlar/Aramid: This fibrous material is very strong, yet flexible. Kevlar or Aramid as it is generically called, is used to increase the strength of the stick to a level above that of fibreglass



Carbon Fibre: Thin, expensive and very light strands of carbon are often woven into sheets or strips. Carbon Fibre is the material used to create the stiffness in hockey sticks which in turn lead to the greatest amount of power being transferred from the stick to the ball. It is often combined with Kevlar/Aramid in order to take advantage of its strength yet prevent breakage.

