

YOUR PERSONALISED SHARPS QUOTATION

sharps | created with you



WHY CHOOSE SHARPS?

As the UK's leading fitted furniture company, we put great care and attention into making your experience the very best it can be. From design to installation and beyond.

sharps | created with you



Fit more in

Only Sharps bespoke fitted furniture is specially created to give you the most space possible. Whether that's more storage in the living room, or more clothes in your wardrobe, you can trust us to maximise every last millimeter of space.



15-year guarantee

We're so confident in the quality of our fitted home offices, furniture and personalised storage solutions, we've created a full 15-year product and installation guarantee for you. Our customer service team is on hand if you have any queries.



The best quality

Your order will be tailor-made at our state-of-the-art facility in the West Midlands. All of the raw materials are cut down on site to precisely fit your room, with headboards or stools being made-to-order by skilled upholsterers. Everything is quality checked from start to finish.



Beautiful inside & out

Not only do our wardrobes look beautiful on the outside, but they also look beautiful on the inside too, with colour-matched interiors and storage solutions. Plus, with up to 40% more space than other carcass-based fitted wardrobes, you can see why no one compares to Sharps.

YOUR RANGE – MANHATTAN

sharps | created with you



Room Specification Summary



Door/Drawer Colour



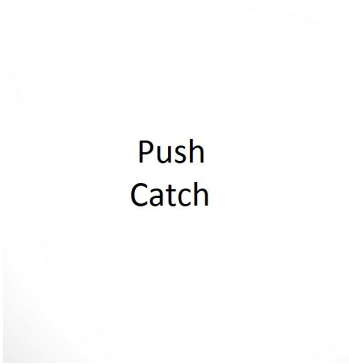
Frame Colour



Interior Colour



Handle



Push
Catch

Push Catch

Range:

Manhattan

Worktop Colour:

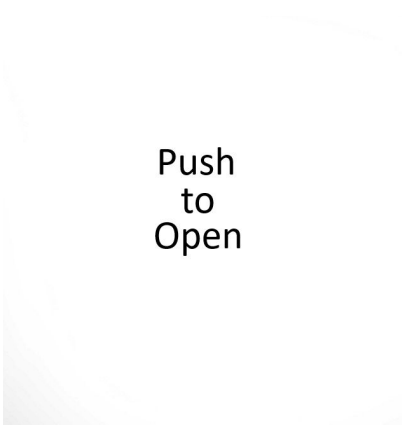
Willow Green

Cornice:

None

Interior Handle:

Jane (Polished Chrome)



Push
to
Open

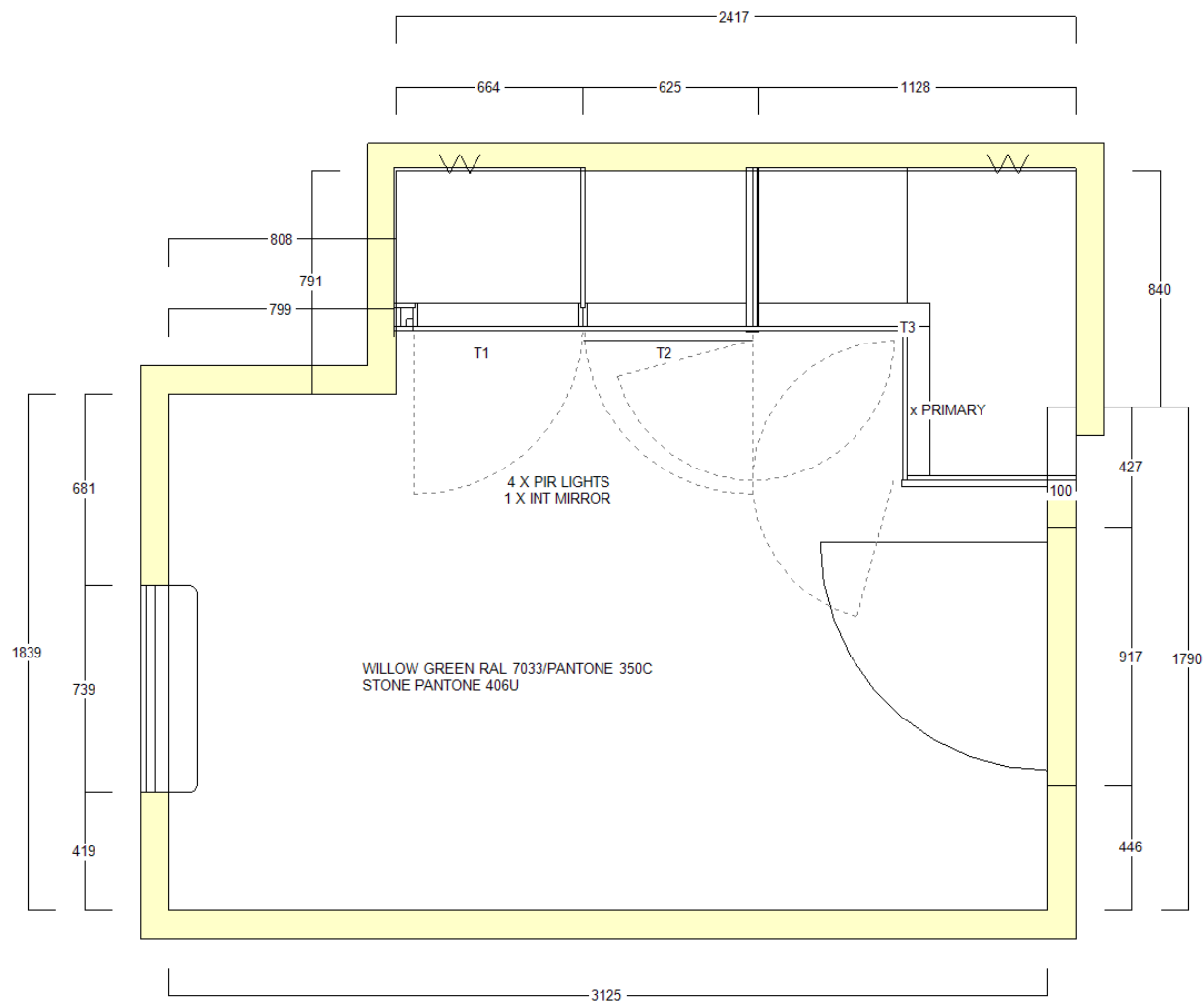
Push To Open

Our unique front frame system provides up to 40% more storage, utilising every square inch by providing storage wall to wall, floor to ceiling (note, the internal walls/ceiling will be visible unless optional back, side and top panels have been ordered)

YOUR OVERHEAD PLAN



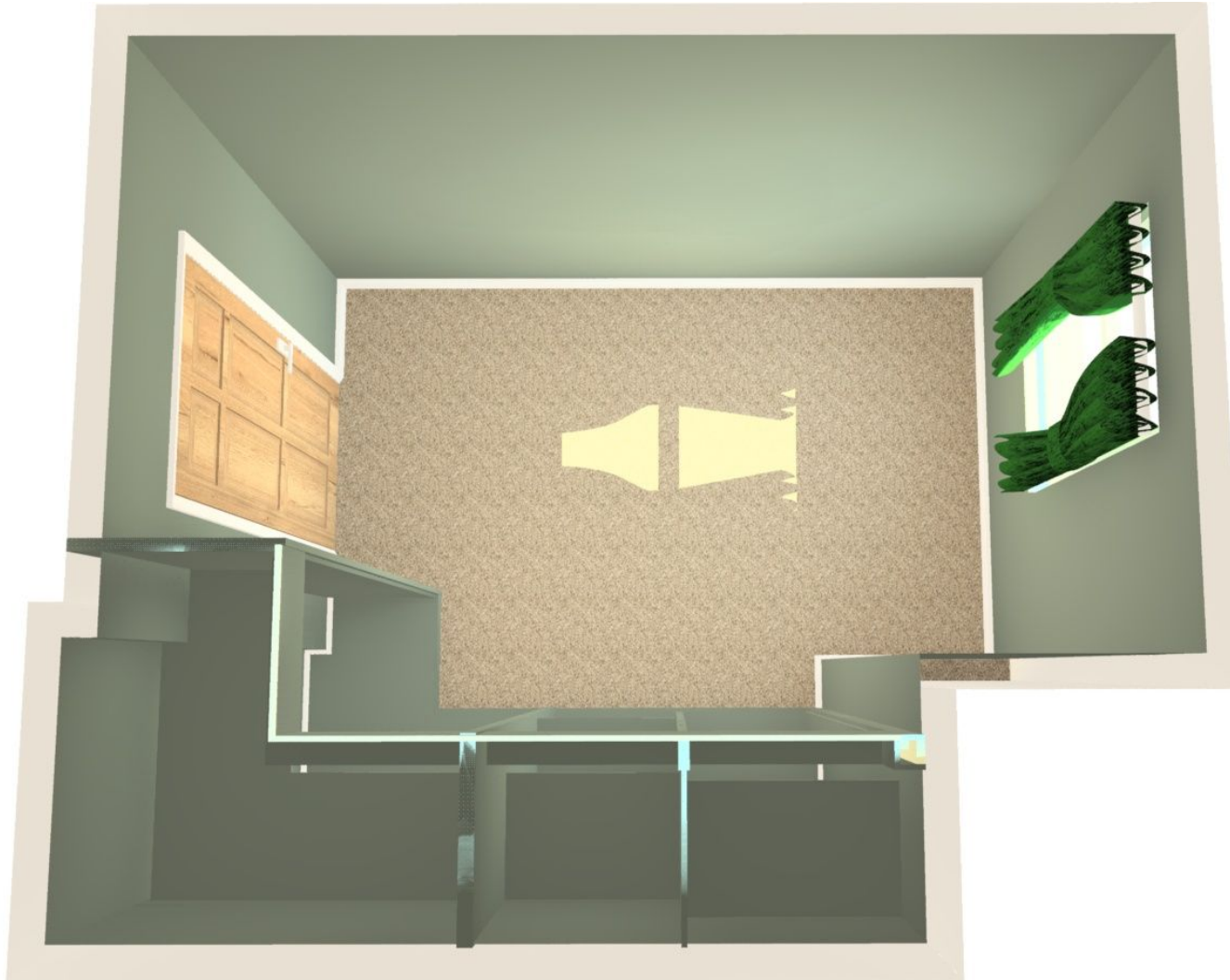
This plan shows the layout of your room and is best used in conjunction with the Product List



Views of your new Sharps furniture

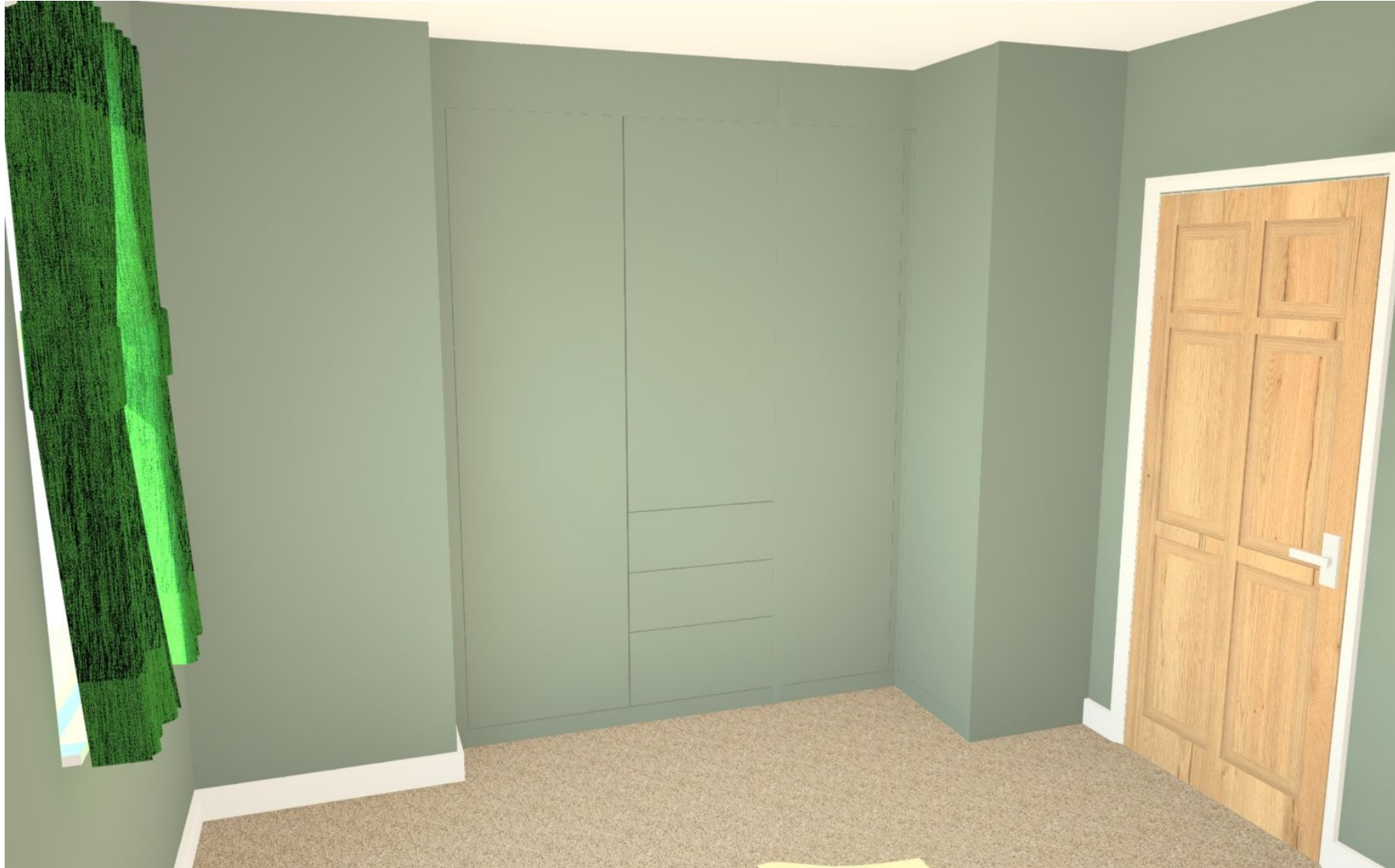
The CAD image is shown for illustration purposes and is not necessarily an exact representation of the installed product. Interiors under angled ceilings will be installed according to the limitations of the space and may not be finished as shown.

sharps



The CAD image is shown for illustration purposes and is not necessarily an exact representation of the installed product.
Interiors under angled ceilings will be installed according to the limitations of the space and may not be finished as shown.

sharps



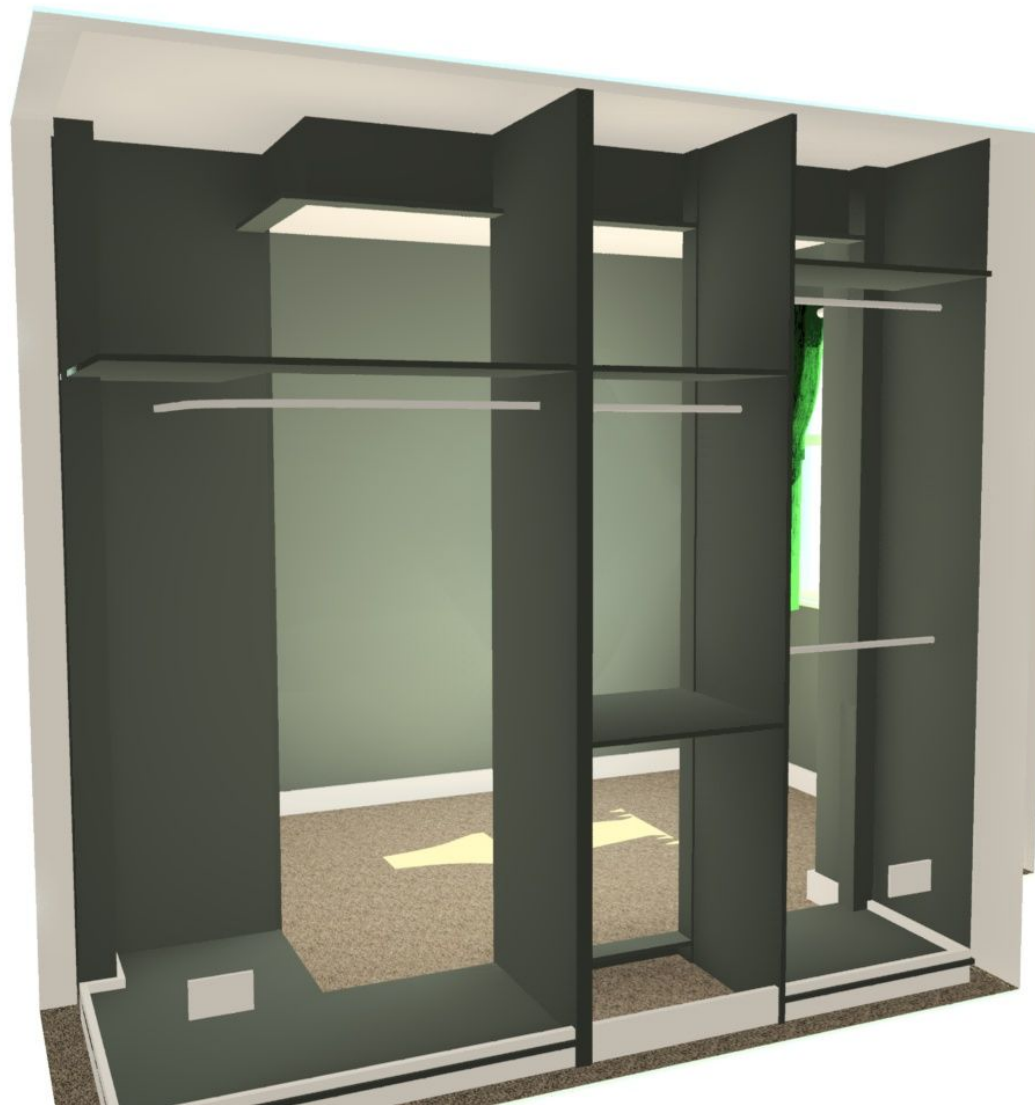
The CAD image is shown for illustration purposes and is not necessarily an exact representation of the installed product. Interiors under angled ceilings will be installed according to the limitations of the space and may not be finished as shown.

sharps



The CAD image is shown for illustration purposes and is not necessarily an exact representation of the installed product. Interiors under angled ceilings will be installed according to the limitations of the space and may not be finished as shown.

sharps



Product List



Fabric Choice:

| Ref. | Description | Ref: | Description |
|------|---|------|-------------|
| | (FIM) Fixed Interior Mirror w280 h1524 (Qty 1) | | |
| | (LHD1) PIR Robe Light (Qty 4) | | |
| T1 | 603 Robe (560 deep / 576 overall) | | |
| | IS1 Double Hanging | | |
| | Door (LH,Solid,2160) | | |
| | Internal Backs/Sides/Tops: No | | |
| T2 | 603 Robe (560 deep / 576 overall) | | |
| | LS1 Linen Press with Short Hanging | | |
| | Door (RH,Solid,1405) | | |
| | Internal Backs/Sides/Tops: No | | |
| T3 | Open Corner Robe: LHCV | | |
| | Door Left (Secondary,Solid,2160,500,165) (560 deep) | | |
| | Door Right (Primary,Solid,2160,500,165) (600 deep) | | |
| | Backs/Sides No | | |
| | LHCV Curved Long Hanging | | |

Key: RH / LH = Right Hand / Left Hand Hinged 165 = Has 165 Degree Hinges (doors will otherwise have 110 degree hinges)

PRICE AND PAYMENT SUMMARY



| | | | |
|-------------------|-------------------|-------------|------------|
| ALL IN PRICE | £9,705 | Offer date: | 27/10/2025 |
| Promotional Offer | 50% off Furniture | | £6,842 |
| Marketing Offer | We'll pay the VAT | | £5,701 |
| FINAL PRICE | | £5,701 | |
| Valid until: | 02/11/2025 | | |

CHOICE OF FUNDING

This is not a contract. This document is an illustration only of the various payment options. It is a quotation or an offer of credit. All credit is subject to status.

OPTION 1 -SELF FUNDING

If you are paying from your own funds or if you are arranging your own loan or re-mortgage

| | | |
|--------------------------|-----|--------|
| Purchase Price: | | £5,701 |
| Deposit with Order | 25% | £1,425 |
| Amount Prior to Delivery | 65% | £3,706 |
| Balance on Completion | 10% | £570 |

OPTION 2 - FLEXIBLE PAYMENT OPTION FROM TANDEM BANK LIMITED

Interest is calculated daily and added at a monthly rate of 1.24% equivalent to 14.85% per annum fixed. Repayments are flexible but are subject to the minimum monthly payment below. You can therefore control the term of the loan and the interest you pay.

| | | | |
|---------------------------------------|--------------------|-----------|-----------|
| Purchase Price | £5,701 | | |
| Deposit with order | £570 | | |
| Loan balance on delivery of furniture | £5,131 | | |
| | Loan Period Months | | |
| | 24 | 36 | 60 |
| Monthly Repayments | £248.42 | £177.49 | £121.66 |
| Total Charge for Credit | £831.08 | £1,258.64 | £2,168.60 |
| Total Amount Repayable (inc deposit) | £6,532.08 | £6,959.64 | £7,869.60 |
| Interest Rate per Annum FIXED | 14.85% | 14.85% | 14.85% |
| APR Fixed Representative | 15.9% | 15.9% | 15.9% |

Selected Payment Option: FINANCE - 36

Deposit Method: Card

Our bank details if paying by BACS:
Account No.: 03881334
Sort Code: 20-51-01
Account Name: Sharps
Payment Ref.:



MULTIROOM OFFER - £1000 OFF

sharps | created with you



MULTIROOM OFFER

RECEIVE AN ADDITIONAL
£1000 OFF* WHEN YOU TRANSFORM
MORE THAN ONE ROOM.

Have you been inspired to add Sharps furniture to more than one room?

Whether it's a spare bedroom, a living room, home office or hallway, there's a huge benefit to having us work our magic on multiple spaces.

Choosing our multiroom offer not only saves you money, but means both rooms can be delivered at the same time.

Chat to your designer to discover all of our furniture solutions and take advantage of this fantastic £1000 offer.

*Multiroom offer of an additional £1000 OFF applies to orders where the lower priced room is £2000 or more.



WHY CHOOSE SHARPS?

Thank you for taking the time to read your full quotation document. We hope you're inspired enough to go ahead and order.

Once you've given us the go-ahead here's what will happen next:

Survey



Remember, nothing is set in stone so if you need to make any changes to your design, any adjustments can be agreed with the surveyor.

Delivery



After your survey, we'll arrange a date and time with you for delivery of your bedroom, living space or home office, ready for installation.

Installation



A Sharps-approved installer will then build your new bedroom, living space or home office from raw materials at your house and install it with minimum disruption and maximum respect for your home.

Peace of mind



Once your new bedroom, living space or home office is complete, you can relax knowing it's covered by the Sharps 15-year guarantee.

FREQUENTLY ASKED QUESTIONS

When will my furniture be delivered?

Your furniture will normally be delivered up to three working days before your installer arrives to carry out the installation – our Delivery Planning department will contact you to arrange a convenient date. Our vehicle and driver will get as close as possible to your property.

Where do Sharps recommend the furniture be stored on delivery?

We recommend that you clear the route that will be used to manoeuvre the furniture into the room where the installation will take place. The delivery needs to be stacked in the room against the wall onto which it will be fitted, so please ensure adequate space is cleared prior to delivery. Additionally any carpet in the area should be pulled back prior to delivery.

Do I need to clear the room before installation?

Yes, the room needs to be completely empty of all personal belongings and soft furnishings which includes your bed. Any previous fitted furniture is to be dismantled and removed from the room.

Is there anything else I need to be aware of regarding the installation?

Due to the nature of the work being carried out, a certain amount of dust will be created during the cutting of some of the materials within the room of installation. Your Installer will however, minimise this by using dust sheets to protect surfaces.

I'm not having backs on my wardrobes, do I need to do anything to the walls?

We normally advise that you paint the wall covered by the wardrobes several days prior to delivery.

What hours will the installer work and do I need to be at home?

Your Installer normally starts work between 8am and 9am and finishes for the day between 4pm and 5pm, unless otherwise specified. It's not necessary for you to be present for the entire installation, but we do recommend you are there for the start and finish.

OUR FINANCIAL SERVICES

sharps | created with you



Sharps Bedrooms

Here at Sharps, we offer a wide range of bedroom, living and home office designs and innovative solutions for every home. We are market leaders with a trusted heritage of over 50 years and a network of 31 showrooms nationwide, employing over 600 people throughout the business. We provide an all-inclusive service for those looking to makeover their bedroom or incorporate a home office into their living space taking care of everything for you, from design to installation.

You can pay for your Sharps furniture with your own funds, arranging your own finance or using our finance option. Sharps work with Tandem Bank Limited to offer customers finance packages and we are authorised as a credit broker by the Financial Conduct Authority (FCA) FCA Registered Number: 710897. During your Home Design Visit we will advise you of your payment options including our finance package, to enable you to make an informed choice of funding. If you apply for finance you will be subject to a credit reference agency search by Tandem Bank Limited.

Should you choose one of the financial packages offered by Tandem Bank Limited this may result in us receiving a commission for introducing you to them.

More about Tandem Bank Limited

Tandem is a specialist lending and savings Bank providing consumers in the UK with a range of products. These include providing unsecured loans for a variety of purposes, including home renovation and refurbishment. Please visit www.tandem.co.uk for more information.

Financial Conduct Authority (FCA)

In order to introduce our customers to Tandem, Sharps is authorised by the FCA to act as a credit broker. The FCA is the independent UK watchdog that regulates financial services providers and works to protect consumers by ensuring that credit brokers and providers meet high standards of conduct. The FCA requires companies to comply with its rules and only those that demonstrate that consumers are at the heart of their business will be authorised. www.fca.org.uk

Information provided by you

The information you provide us with will enable Sharps Bedrooms to create an electronic record of your application to allow the application to be processed at a later date with your consent. The information will be kept securely, no longer than necessary and will not be disclosed to any third party companies.

Complaints

If you have any complaints about our credit brokerage services, please contact our Regulated Complaints Manager either by email (regulatedcomplaints@sharps.co.uk), telephone (01276 802000) or by writing to Regulated Complaints Manager, Sharps Bedrooms Limited, Regal House, 18 High Street, Bagshot, GU19 5AA. If we fail to respond to these to your satisfaction within a maximum of eight weeks, you may complain to the Financial Ombudsman Service (FOS), Exchange Tower, London E14 9SR, telephone 0800 023 4567 or 0300 123 9123.

THANK YOU

If you have more questions about your design, don't hesitate to get in touch.