

Installation Guide

PERLATO

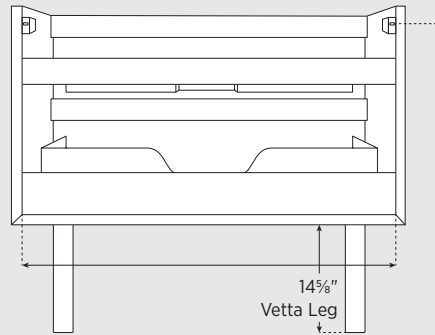
Perlato Edge Wall Mount Vanities

IMPORTANT

Before beginning installation, make sure that the vanity is the correct model and size and conduct a thorough inspection.

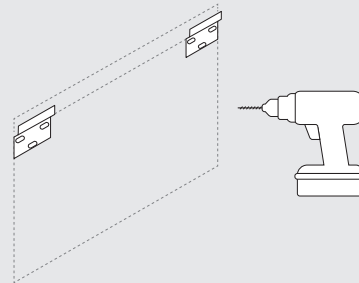
1. Measure width of vanity from inner left side to inner right side. Determine height by measuring distance from metal hooks to vanity base and adding desired distance from vanity base to floor.* Mark wall appropriately.

* When adding Vetta legs, the base-to-floor height is 14 $\frac{5}{8}$ ".

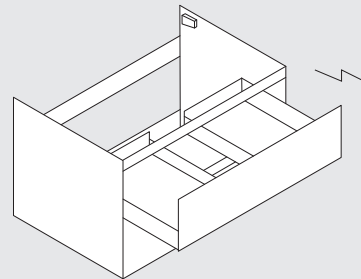


2. Drill mounting holes in wall and fasten wall brackets with screws.

Ensure brackets will be anchored to wall studs or reinforce wall for support.

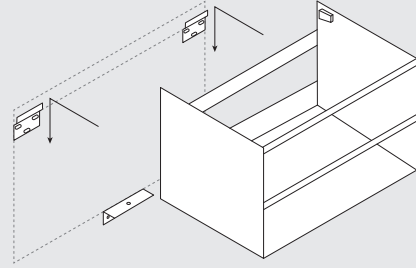


3. Remove drawers to facilitate installation process. Slide drawer forward, then gently tilt upwards and pull out completely.

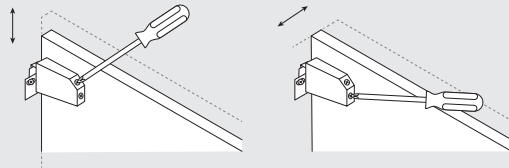


4. If Vetta legs will be used, install them now.
Refer to Vetta Installation on page 3 before continuing with Step 5 below.

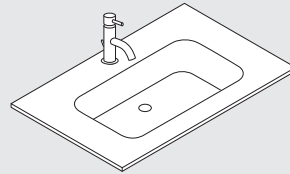
5. Hook vanity onto wall brackets. Mount support bracket onto wall directly under vanity base.



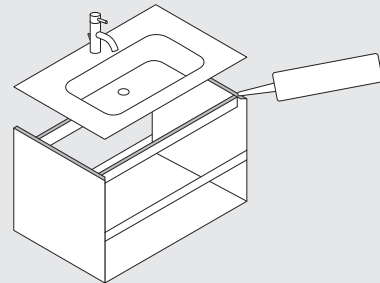
6. Adjust metal hooks if necessary to properly level vanity and secure it to wall.



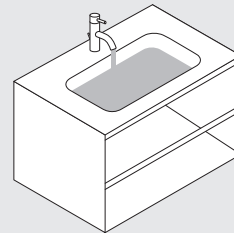
7. Attach faucet and drain to sink.



8. Spread non-acetic silicone sparingly along top rim of vanity. Position sink in place and use a cloth to wipe excess silicone.



9. Connect water supply and drain lines. Run faucet and check for leaks.



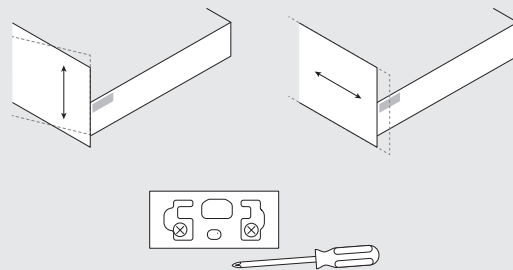
10. Slide drawers back onto tracks. If drawer front position needs adjustment, remove covers on drawer sides to access alignment mechanism.

To align vertically

Use setting *closest* to drawer front

To align horizontally

Use setting *farthest* from drawer front

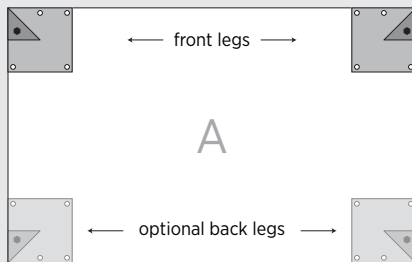


Vetta Legs *optional*

Carefully place vanity upside down on a protective surface. Use screws included with legs to attach them to underside of vanity in desired configuration. Choose 1 set for front only or 2 sets for front and back. Legs are decorative; vanity must still be wall-mounted.



Angled front with corner alignment
accentuates vanity 45° detail



Flat front and inset alignment
creates a square look

