

RS

MANUFACTURING SOLUTIONS



Navigate the exciting opportunities from technological advancements and keep your processes running smoothly

au.rs-online.com

HELPING TO KEEP MANUFACTURING MOVING

Our Purpose is Making Amazing Happen

We plan to inspire a more sustainable world through education and innovative solutions that improve lives. Through a range of projects and activities we're supporting the engineers of today and tomorrow, ensuring that they have all they require from a broad product range to a number of core services that help to add real value to our customers.

We have unrivalled focus on the customer and their needs across the design, build and maintain lifecycle. We've collated key products and industry themes with a laser focus on addressing customer problems and offering solutions to help them save time and money.

We're more than a one-stop show for all of your industrial and electronics product needs; our range of services and solutions is second to none. From next day delivery to procurement solutions, find a range of helpful services to increase productivity, save you time and money.

Order online 24/7

We are here when you need us. For a more efficient process for your industrial and electronics product procurement, we have a service to fit your business requirements. From web-based and mobile ordering through to integrated procurement solutions. Ask us about our Purchasing Manager, PunchOut, eInvoicing & eOrdering solutions.

Committed to you.

We understand the important role our solutions and products play in helping you achieve your goals, that's why your dedicated account manager is here to support throughout your journey with RS.

Brands you know and trust.

RS is your one stop distributor for electrical, industrial, automation & control gear, electronics, test & measurement, safety and more - with over 600,000 products from more than 2,500 leading global suppliers including RS PRO, Fluke, TE Connectivity, Phoenix Contact, Schneider, Siemens, ABB, Omron, Harting and more.

Fast, flexible delivery options.

From next working day to call off and consolidated delivery, we've a range of flexible delivery options to suit you. Free delivery available.*

Our knowledge is your power.

When you need specialist advice, think of our technical experts as part of your team. They're poised with extensive knowledge of our products and specifications to help you make the best choice.

Contents

Page 8	Range Overview
Page 10	Service Solutions
Page 14	IOT Essentials
Page 16	Sensors
Page 18	PLC's & HMI's
Page 20	Control & Switchgear
Page 22	Machine & Site Safety

Page 28	Cables & Connectors
Page 30	Mechanical Components
Page 34	Test & Measurement
Page 38	Cleaning & Maintenance
Page 42	PPE & Workwear
Page 48	Hand & Power Tools

Supporting the Manufacturing Sector

RS have supported a wide range of manufactures around the world with market leading Electronics & Electrical components offer for decades, giving them access to the latest products as well as design tools and procurement solutions. We are confident that RS can help the Australian manufacturing sector thrive and maintain it's competitive edge in the growing global market, and will continue to develop our offer of products and services to meet the needs of the industry.

RS are here to help you keep up with the pace of developments and face the future of the industry. No matter where you are, we ensure your products get delivered as efficiently and carefully as possible.

Across the manufacturing sector there are some common challenges and requirements that RS can help support and address:

Reducing Downtime

Unplanned downtime due to equipment failure can be very costly in terms of both lost time and production output, and materials wastage.

Undertaking regular inspections of parts using non-intrusive tools, such as infra-red thermal imagers and vibration analysers or monitoring and control relays can help you detect and predict issues before they lead to failure. RS can provide advice on the right solution for your application.

Re-working existing application or design

There is often a requirement to re-work designs for a new customer, or re-task existing machines for the production of a new part or assembly.

RS provides FREE access to its DesignSpark suite of software design tools. This now includes 3D mechanical design, Electrical design and PCB design. All the tools are free to download, activate and use. Find out more online at www.designspark.com

Energy Management

Knowing how much electrical energy is used by different parts of your process will enable energy efficiency measures to be implemented.

Local Power Monitoring. RS has a range of kWh power meters which can be easily retro-fitted to provide a local indication of power usage. The range includes a variety of capabilities from simple local kWh measurement to power factor & data logging capability. The RS offer also includes a comprehensive range of energy efficient solutions such as IE2 motors, variable speed drives, and low energy lighting.

Maintenance Cost Reduction

Having machinery fully operational in industry is paramount. The machinery's warranty often covers replacement parts over the initial lifespan, but once outside, the mix of usage of component brands across the production line creates a purchasing difficulties and additional maintenance cost.

With the support of various key brands, RS can help you to consolidate the brands used within your machinery and offer advice and how machine reliability and productivity can be improved.

- **Facilities Cleaning & Maintenance**
Essentials to keep your work space & equipment to the highest of hygiene standards.
- **Sensors**
Our market leading range of factory and process automation sensors and transducers includes presence, proximity, temperature, pressure, flow and more.
- **PLCs & Process Control**
From logic controllers & HMIs to temperature control and signal conditioning we've got the product technologies and brands to help keep your production line running 24/7.
- **Control & Switchgear**
Crucial components in any control system. Contactors, relays, MPCBs and pushbuttons are electrical components which can fail without obvious signs of wear, causing unforeseen downtime.
- **Cable & Connectors**
Cables, wiring, connectors and cable management from the leading brands, meeting the needs of challenging environments.
- **Machinery Safety**
Whatever safety system you are maintaining or improving we can help with the widest stocked range of machinery safety components in the market.
- **Circuit Protection & Distribution**
Power distribution and circuit protection are vital for the safe and reliable operation of any manufacturing site.
- **Test Equipment & Calibration**
Essential instruments for troubleshooting, and to help ensure processes are operating within specification. Our in-house calibration service provides confidence on new and existing equipment accuracy.
- **Personal Protection Equipment & Workwear**
Selecting the right PPE means fit, comfort and productivity aren't compromised. From gloves to safety boots and face masks to safety glasses, we can help.





MAKING AMAZING HAPPEN FOR A BETTER WORLD

RS Group is at the heart of the global industrial sector. We provide products and service solutions that help our customers design, build, maintain, improve and protect their equipment and operations. Every day, we help our customers make amazing happen for a better world – from enabling innovative solutions to keeping businesses, critical industries and communities running.

We are committed to being a strong and sustainable business and bringing our people, customers, suppliers and communities together to accelerate our positive impact. We are determined to leverage our global scale and innovative product and service solutions to advance sustainability and improve lives. By doing so, we know we can play a key role in helping to address some of the world's biggest challenges; from tackling climate change, to building engineering and innovation skills and championing diversity and inclusion.

To make this happen, we're introducing For a better world - our 2030 action plan to support a more sustainable and inclusive world. We've set four global goals by 2030 focused on:



ADVANCING SUSTAINABILITY



CHAMPIONING EDUCATION AND INNOVATION



EMPOWERING OUR PEOPLE



DOING BUSINESS RESPONSIBLY



the washing machine project

Proudly partnered by
RS Group



The Washing Machine Project (TWMP) was founded in 2018 by British engineer Nav Sawhney, following a sabbatical in India.

He witnessed women and children enduring many backbreaking hours washing clothes by hand. It's estimated that 70% of the world's population has no access to an electric washing machine.

Due to the time spent on it, hand-washing clothes presents a significant barrier to education for low-income and displaced people globally. This repetitive, demanding task can take up to 20 hours per week leading to chronic back/joint pain.

As a result, Nav decided to develop an affordable off-grid washing machine, the Divya. This manual-crank unit shares the same engineering principles as a salad spinner. It shortens the time spent washing clothes by 75% and requires 50% less water.

Following trials in 2020-2021, 100 Divyas are now used in the Jeddah 5 refugee camp in Mosul, Federal Iraq and Mamsharam Camp in Kurdish Iraq, with further pilots planned in Jordan and Uganda in 2022. TWMP has now received requests for orders in 25 countries for over 2,000 machines.

As part of its commitment to positively influence society and the environment through leveraging innovative technology, Electrocomponents chose TWMP as its first global social impact partner, providing it with support over a three-year period. This will provide c.7,500 machines to disadvantaged families and communities in 10 countries by 2023, benefiting c.100,000 people and contributing to future machine development.

The Washing Machine Project is supported by The Washing Machine Project Foundation, a registered charity in England & Wales (No.1193480).





ENGINEERING TALENT FOR THE FUTURE

We are proud of our partnership with Engineers Without Borders Australia, and their School Outreach program designed to inspire students from diverse backgrounds to create a better world through engineering.

The EWB and RS partnership aims to not only inspire STEM, but strengthen relationships with First Nations communities, as well as contribute to initiatives that increase cultural understanding, the access of First Nations Australians to appropriate technology, and strengthen their career opportunities within the engineering sector.

EWB began in Melbourne in 2003 with a small group of engineers dedicated to harnessing the potential of engineering to create an equitable reality for the planet and its people. Today, the EWB community includes thousands of people and dozens of organisations working together to engineer a better world. EWB Australia's school initiatives deliver thematic learning modules to schools throughout Australia in metro ("Schools Outreach" program) and regional ("Regioneering" program) areas. The focus is on embracing diversity and engaging Indigenous and female students as well as those from low socio-economic backgrounds.

Over the past year, the EWB Outreach program organised 193 university undergraduate volunteers from the likes of RMIT, Sydney University and Monash

to facilitate 266 workshops, inspiring more than 6000 students at 88 schools across the six states and territories in STEM and engineering. The EWB partnership is a significant step in our commitment as a business to create long standing ties with the ATSI community.

Our Commitment

RS has a strong company commitment to ESG globally. Their recent partnership with the Washing Machine Project is supported locally through the ANZ region and this new agreement with EWB aims to build on this charitable commitment within the Australian community. As well as a financial commitment to continue these remarkable programs EWB run, through the RS paid volunteer leave program, the company aims to actively involve their wider team in these community and life changing 'regioneering' trips.

Regioneering

As part of our partnership, RS supports EWB's Regioneering program, providing grants to EWB volunteer Chapter teams to fund this important work.

Schools and community groups in marginalised areas, such as those located in remote regions, in lower socioeconomic areas and with higher populations of Aboriginal and Torres Strait Islander students, need assistance in promoting relevant, inspiring opportunities in STEM. As part of this program, EWB volunteers visit these communities, and play an important role as engaging role models with experience in a range of humanitarian engineering workshops that are practical, innovative, practical and inspiring.

The one-hour workshops are experiential and provide young people with a brief introduction to what engineering is, who EWB is, and what it means to be a humanitarian engineer, creating solutions that take into account social, cultural and environmental contexts. They also achieve multiple curriculum objectives across mathematics, science and social sciences.

The program showcases the many options for a future that embraces human-centred engineering and related STEM vocations. We then give the students a real-world hands-on problem to solve, where they need to work in small teams with the support of our volunteers to design and build a prototype solution.

"We are incredibly excited about the partnership with EWB as it will allow us to make an impact with the engineers of tomorrow whilst also increasing our engagement with the Aboriginal & Torres Strait Islander community. The EWB partnership is a significant step in our commitment as a business to create long standing ties with this community."

Scott Phillbrook,
Managing Director
of RS Australia &
New Zealand



RS proud supporters of the RMIT Electric racing team in the legendary Formula SAE competition.

Originally started by the Society of Automotive Engineers student branch at the University of Texas, Austin, in 1980, the Formula SAE competition now sees over 500 teams from universities worldwide, design, build and compete in their own Formula-style open-wheeled race car. The vehicles are judged on dynamics, design justifications, costing strategies and business presentation and apply rigorous STEM concepts to the build and design process.

Today the team counts over 50 passionate students across a dozen faculties who demonstrate innovative thinking, initiative and commitment to the real-life commercial project. And it's little wonder the Formula SAE graduates are often headhunted for their unique combination of technical skills, strong communication abilities and project management skills.

Reinforcing our drive to support future engineers, RS are proud sponsors of the RMIT Electric Racing Team and are continually supporting their engineering efforts. "Our mission is to promote the viability and exciting future of electric cars through not only showing we can compete with combustion powered cars, but by besting them. It is thanks to our sponsors like RS' investment and support that we are able to advance the research and development of the team, develop cutting-edge vehicles, and produce high-quality graduates from year to year. Our partnership with RS demonstrates their active participation in the community and engagement with the next generation workforce allowing students to develop skills they may otherwise not learn at a university level."

RS are proud to support the next generation of innovators with the quality products RS has to offer.



PRODUCT RANGE

OVER 650,000 PRODUCTS, MORE THAN 2,500 BRANDS.

We offer a broad and extensive product range to support our industrial and electronics customers with 650,000+ stocked products, from over 2,500 suppliers – including our own brand, RS PRO.

A few of our most popular global and local brands:



RS PRO

RS PRO is our own-brand product range of more than 65,000 high-quality, competitively priced industrial product and electronic components.

RS PRO offers customers a choice where the combination of quality, performance and price create exceptional value. All RS PRO products and components are backed by the RS Seal of Approval, representing leading industry standards for audit, inspection, test and certification.



rspro.com

Electronics Components, Power & Connectors

- Batteries & Chargers
- Connectors
- Displays & Optoelectronics
- Passive Components
- PCB Prototyping
- Power Supplies & Transformers
- Raspberry Pi, Arduino & Development Tools
- Semiconductors



Electrical, Automation & Cables

- Automation & Control Gear
- Cables & Wires
- Enclosures, Storage & Material Handling
- Fuses, Sockets & Circuit Breakers
- HVAC, Fans & Thermal Management
- Lighting
- Relays
- Switches



Mechanical Products & Tools

- Abrasives & Engineering Materials
- Adhesives, Sealants & Tapes
- Facilities Cleaning & Maintenance
- Fasteners & Fixings
- Hand Tools
- Plumbing & Pipeline
- Pneumatics, Hydraulics & Power
- Transmission
- Power Tools, Soldering & Welding



IT, Test & Safety Equipment

- Computing & Peripherals
- Facilities Cleaning & Maintenance
- Office Supplies
- Personal Protective Equipment & Workwear
- Security & Ironmongery
- Site Safety
- Test & Measurement



au.rs-online.com/brands

SERVICE SOLUTIONS

OUR SERVICE SOLUTIONS SUPPORT YOU ACROSS THE PRODUCT LIFE CYCLE THROUGH DESIGN, BUILD AND MAINTAIN.

We can also give you advice on flexible delivery options, cost-saving ways to help you manage your inventory and procurement, through to preventative maintenance and eCommerce solutions.



Delivery & Inventory Solutions

- With a range of flexible delivery and collection options, we make it easy for you to receive their order when and where you need it.
- From **next working day** to **consolidated deliveries** and **vendor managed inventory**, we have a range of flexible delivery options to suit your needs.*
- **Large local stock holding in Australia** for fast delivery plus access to our global network of distribution centres.



Product Support

- We offer easy access to product support resources online or by phone.
- Our Customer Services team can help understand your needs offering product support or directing your enquiry to a qualified engineer.
- Speak to a live chat member on our website for help in finding products or other technical information.
- Or take a look at our technical data sheets which are available at product level. This can help save time, allowing you access to technical information 24/7.



Calibration

- The RS calibration service maintains compliance across a wide range of assets to international standards. From thermometry to test meters and measuring devices, you can be confident your equipment is compliant.
- Buy new, calibrated, ready-to-use equipment or, request recalibration of your own products with a fast turnaround and delivery.
- ISO9001:2015 Standard or NATA-accredited laboratory.



Invoice Options & FlexiPay+

- Stay in control of your spend and reduce your purchase to pay costs with our invoicing and payment services.
- FlexiPay+ is a rent to own solution for you to turn your business' capital expenses into operating expenses for a customised solution.* It allows you to access the equipment you need now without the high initial setup costs as well as unlock access to industry leading value added services.



Product Plus

Want to source products from RS that aren't published on our website?

- Product Plus is an exclusive service for customers looking to consolidate their spend. Our specialist team can support your requirements and help you source products not published on our website. *
- Using our expertise and relationships with over 2,500 key manufacturers, we provide access to over a million products. We will also let you know if we find an alternative product offering extra functionality or value for money benefits.
- What's more, consolidating more of your purchasing with RS reduces purchase orders, saves time sourcing and helps you leverage your spend.



Maintenance Solutions

- RS Maintenance Solutions ultrasonic air leak inspections can help create massive financial and carbon savings with a rapid payback period.*
- An RS Maintenance Solutions energy loss auditor will attend site and perform a non-intrusive fault-finding survey of your compressed air systems using airborne ultrasonic technology. This method will both identify the fault and assess its severity in terms of cost.
- A full itemised report is then generated, with detail of leak size, cost and estimated payback time if remedial work is carried out.



eCommerce Solutions

For a more efficient process for your industrial and electronics product procurement, we have a service to fit your business requirements. From web-based and mobile ordering through to integrated procurement solutions.

- **PurchasingManager™** - A free web order management solution that helps you manage your spend, whilst providing visibility of orders placed through the RS website.
- **PunchOut** - Integrated into your own eProcurement system, providing fast and easy access to our full product range and purchase information.
- **eInvoicing** - Fast and secure invoicing direct from our system to yours. Eliminates paper, whilst saving you time and money in administration processes.
- **eOrdering** - Fast and secure ordering direct from your system to ours. Improves accuracy by eliminating order and invoicing errors.

 ANZSolutions@rs-components.com

*Qualifying criteria and minimum order quantities may apply for some services. Orders placed through RS Product Plus, FlexiPay+ and other services are subject to additional terms and conditions.



DESIGNSPARK

Free, easy to learn and use professional CAD software

www.designspark.com

I GO FROM
3D CONCEPT
TO REALITY
IN NO TIME



A FUTURE FACING PACT

The costs associated with procurement can grow as a company grows.

A circular economy is a systemic approach to economic development designed to benefit businesses, society, and the environment. It is regenerative and aims to gradually decouple growth from the consumption of finite resources.

Since 2002, the Pact Group has been a driver of the circular economy through reuse, recycling and packaging solutions. The Pact Group employs over 6000 people and has over 8000 customers. They are an ASX listed company that is the largest provider of returnable produce crates in Australia and New Zealand. Their annual product output is approximately 11 billion units. It is a future facing company that is constantly evolving to find ways to grow business whilst lowering the footprint businesses place on the environment.

Their contribution to the circular economy involves three divisions within the company. Pact Packaging works with companies of all sizes to create recycled packaging solutions. Industries include dairy, FMCG, health and personal care, and industrial. With 110 operating sites globally, and a commitment to the inclusion of 30% of recycled material in their packaging, they lead the field in sustainability in their category.

Pact Reuse has created a solution to single use packaging, and works with major food producers and supermarkets to help them reach their sustainability goals. They have replaced 150 million single use boxes with 5 million plastic crates. They also recycle many millions of clothing hangers and manufacture waste bins for councils.

Pact Recycling is at the cutting edge of plastics recycling and partners with governments to maximise the reuse of waste. The output of this feeds the other two divisions.



Procurement Impact

Pact has grown through acquisition. This presents challenges for the business as each site it acquired had its own legacy suppliers and procurement systems, with little data around spending patterns. This created inefficiencies across the business and ultimately cost the company time and money. These circumstances certainly applied to Pacts MRO procurement where they were purchasing a multitude of products across numerous suppliers. This made standardisation and site level compliance problematic, and economies of scale difficult to achieve, as managing pricing across a vast number of SKUs was challenging and pre-negotiated pricing benefits were non-evident.

By onboarding RS, Pact has moved away from manual procurement processes with its associated inefficiencies to a centralised automated replacement. RS eProcurement system allows for detailed analysis around MRO spending, which creates value for Pact. This approach means that spending across each site is visible, it eliminates leakage on a sitewide basis which means that Pact now enjoys standardised pricing and discount levels on SKU's across all sites nationally allowing for continuity around pricing.

Responses to procurement inquiry are now down to 1 day, and as RS eProcurement system is predictive, it can ensure that stock is available in localised warehouses as opposed to being housed in its UK headquarters. This means that Pact enjoys faster access to stock with delivery times cut from an average of 7 days down to 1. All this has led to significant savings for Pact, with further benefits as the system is further refined.

The Pact Group and RS have formed a partnership that will streamline Pact's MRO procurement, delivering efficiencies around purchasing, fulfillment, and sales analysis. This will further Pact's objective of driving the circular economy.

au.rs-online.com/manufacturing

Our award winning software is absolutely free to download and use, and always will be. Whether you are a professional engineer, hobbyist or a maker, our range of CAD tools are the perfect addition to your design arsenal. Backed up by a huge library of CAD models, the interactive BOM interface saves you time and money when designing and costing your project.

For a quick overview and to find out more about DesignSpark, visit whatisdesignspark.com



DesignSpark Mechanical is the first free and fully-functional 3D design package to feature intuitive Direct Modelling techniques and give you access to 100 million existing 3D models. Easy-to-use and easy-to-learn, our unique 3D modelling software shortens the time between having an amazing idea and creating prototype designs.



Take electronics design to a whole new level and join over 250,000 registered DesignSpark PCB users benefiting from powerful features for schematic capture and PCB layout. Professional, accessible and fully-featured, our free and unrestricted PCB design software helps you rapidly prototype so you can make your world-changing ideas a reality.



There's a great set of useful 'tools' in the Toolbox App. Including the ability to scan RS Barcodes and order directly from within the App, electronic design calculators, lookup tables and get regular news updates and more. So try the Toolbox App now for iOS, Android and Windows desktop devices.



DesignSpark Electrical provides a powerful and comprehensive range of professional CAD capabilities, allowing you to complete designs in a fraction of the time and building accuracy and precision into your end-to-end design process.

IOT ESSENTIALS

Smart solutions to enable the designs of the future

When it comes to the Internet of Things, sensors, connectivity and, above all, security play a decisive role in development. We offer you a selection of thousands of products, data sheets, technical support as well as further information on all these topics and much more - all from a single source.



thinQ! Silicon Carbide (SiC) Schottky Diode

- The Infineon thinQ!™ Generation 5 offers a new thin wafer technology for SiC Schottky Barrier diodes improving the thermal characteristics
- The SiC Schottky Diode devices offer advantageous high voltage power semiconductor features such as higher breakdown field strength and improved thermal conductivity allowing greater efficiency levels



133-9945	1200V 56A	IDH20G120CSXKSA1
133-9852	1200V 11.8A (Pack of 2)	IDH02G120CSXKSA1

Ethernet Switches

- Five RJ45 ports
- Width of 23 mm
- Operating temperature range of -40°C to +80°C
- Supply voltage range of 5 V to 30 V DC
- DIN rail mounting
- Gigabit series



189-0537	94 x 99mm
189-0536	95 x 99mm

Touch Screen HMI Displays

- High-performing HMI display used to monitor machines, perform tasks and visualise operational status



221-3481	4.3 in, TFT LCD Display, 480 x 272 pixels
215-6604	7 in, TFT LCD Display, 800 x 480 pixels, USB interface
215-6605	7 in, TFT LCD Display, 800 x 480 pixels, USB, Ethernet interface
215-6607	7 in, TFT LCD Display, 800 x 480 pixels
215-6606	10.2 in, TFT LCD Display, 1024 x 600 pixels, USB, Ethernet interface

3 Phase LED Energy Meter

- Offers true RMS measurement to ensure accurate and reliable readings with simultaneous sampling of Volts and Amps
- The meter is designed with a six-digit display with auto-scaling on each row for better readability and gives continuous and instantaneous readings



179-7578	90mm Cutout Height
----------	--------------------

LOGO!8 From Siemens

LOGO! is the ideal entry point to automation projects: It supports you with simple, intuitive engineering, numerous interfaces, lots of learning materials, and free demo software.

Search for 'LOGO!8' at RS Online



SIEMENS

Mini I/O Plug Kit

- Industrial Mini I/O plug connectors with a compact, space saving design and a latching wire to board I/O interface
- The Mini I/O plug connectors feature two points of contact on the contact interface for high electrical reliability in high vibration environments



703-9673	8 Way	2013595-1
----------	-------	-----------

Harmony Wireless and Batteryless Package

- Wireless and batteryless package, containing a push-button, set of caps and receiver.
- Reduction of wiring allows for a quick and easy installation
- Flexible due to its mobility, giving greater control to operators. Can be used to remotely control machines up to 25 m away.



739-8060	Plastic, Ø22	XB5RFA02
739-8064	Metal, Ø22	XB4RFA02
739-8067	Metal, Ø22	XB4RFB01

Network Tester

- Can test multiple cables such as: UTP, STP, Cat5E, Cat6, Cat6A and Coaxial cables
- Included toner probe helps with testing
- Locate and identify the distance of an open or short circuit. No power supply needed. Just a 9V battery. Low battery indicator included



146-6833	F, RJ12, RJ45, 2670
----------	---------------------

Absolute Wireless Pressure Transducer

- Pressure ranges from 0-50mbar to 0-1000mbar gauge
- Up to 750 m line-of-site range (depending on receiver)
- Piezoresistive thick film ceramic sensor with stainless steel body



123-5249	500mbar Max
----------	-------------

Logic Controllers

- Computer programming interface
- Operates from -10°C to +55°C
- Commercial and industrial application
- ModBus network type
- Serial communication port
- Uses ladder programming language
- Programming capacity of 250 lines
- Screw termination
- One communication port



917-6377	Analogue, Digital
917-6373	Digital

Sick Flexi Loop

- Flexi Loop can connect up to 32 safety sensors in series in compliance with the highest performance level PL e
- Safety switches and safety sensors with OSSD outputs can be used together, regardless of manufacturer
- Detailed diagnostic information is also available for each sensor or switch



SICK

213-3778	Node For Safety Sensors	FLN-OSSD1100108
213-3771	Y-adapter, 24 V dc	FLA-YCON00001
213-3779	Module To Terminate Series Connection	FLT-TERM00001

Unmanaged Ethernet Switches

- Great value Ethernet switches with TP RJ45 ports and data transmission speeds of 10/100 Mbps
- 5-30Vdc supply voltage with autocrossing function and LEDs: Us, link and activity per port
- IP-20 polyamide case with removable screw terminal power block



144-8673	5 RJ45 Ports - DIN rail mount
226-3243	7 RJ45 Ports - Surface mount
712-4049	8 RJ45 Ports - DIN rail mount

SENSOR TECHNOLOGY

Increasing equipment effectiveness and facility productivity

Our market leading range of factory and process automation sensors and transducers includes presence, proximity, temperature, pressure, flow and more.



M8, M12 and M18 Inductive Sensors

- LED status display
- Plastic body
- Operating temperature range -25° - +70°C
- Reverse polarity and short circuit protection (dc types only)
- Flush or non flush mount versions



444-3293	M18 x 1, PNP	XS618B1PAM12
324-1226	M8, SR 2.5MM, PNP, 2M	XS4P08PA340
324-1248	M12, SR 4MM, PNP, 2M	XS4P12PA340
324-1254	M12, SR 4MM, PNP, M12	XS4P12PA340D
324-1311	M18, SR 8MM, PNP, 2M	XS4P18PA370
609-7331	M18, SR 15MM, PNP, 2M	XS4P30PA370
609-7230	M18, SR 5MM, PNP, M12	XS1M18KP340D
609-7280	M18, SR 8MM, PNP, 2M	XS4P18KP340
772-9874	M18, SR 20MM, M12, SS	XS918R4PAM12

OsiSense XMLA Pressure Switches

- Are used to control the pressure of hydraulic oils, fresh water, sea water, air, steam, corrosive fluids, or viscous products.
- The XMLA pressure and vacuum switches have a fixed differential and are for detection of a single threshold.
- Fixed differential
- External pressure setting window available
- 1 NO & 1 NC snap acting contacts
- Temperature range: -25 to +70 °C
- Enclosure rating: IP65 with plug-in connector, IP66 with terminal connections
- Operating rate: up to 120 operations / min. for diaphragm and 60 / min. for piston



361-3413	10-160BAR M20	XMLA160D2S12
361-3429	20-300BAR M20	XMLA300D2S12

Magnetic Pickup Sensor

- An 'active' version of the standard type (Stock no. 304-166) but incorporating an IC to provide a digital output compatible with most logic systems
- Requires a peripheral speed greater than 250mm per second to operate



304-172 5 - 15 V dc

W2S-2 Series Photoelectric Sensors

- WTB2S-2 miniature photoelectric with PinPoint LED for rugged and reliable detection of all object types
- Choice of diffused background suppression, retro-reflective or through-beam - with sensing ranges up to 2m
- All sensors have PNP output and 10-30Vdc supply, retro-reflective sensors can use a range of reflectors - see 265-2754



842-8572	WTB2S-2P1330
842-8560	WTB2S-2P3130
842-8585	WTB2S-2P1360
842-8579	WTB2S-2P3160

E2E-NEXT Inductive sensors with IO-Link

- Based on the existing E2E series nickel-plated brass IP67 threaded inductive sensors but with IO-Link capability
- Feature a PNP NO/NC switched output, with the added benefit of IO-Link status data being accessible via a gateway over the same wiring
- Full range of over 100 E2E-NEXT variants available from stock



124-4439	M12, Sr 3mm, NO/NC, M12 - E2E-X3B4-M1TJ-IL3 0.3M
124-4440	M18, Sr 7mm, NO/NC, M12, E2E-X7B4-M1TJ-IL3 0.3M
124-4441	M30, Sr 10mm, NO/NC, M12, E2E-X10B4-M1TJ-IL3 0.3M

M18 Photoelectric Sensors

- Nickel plated brass body with IP67 sealing
- 10-30Vdc supply with LED output indication
- Retro-reflective sensors supplied with reflector



729-5090	NPN Diffuse M12 conn.
729-5104	PNP Diffuse M12 conn.
729-5094	NPN Diffuse 2m cable
729-5107	PNP Diffuse 2m cable
729-5110	NPN Retro 2m cable
729-5113	PNP Retro M12 conn.

Metal Cased EN50047 Limit Switches

- GLC series die cast metal cased limit switches with IP66 protection
- 1NO + 1NC (SPDT) snap action actions rated at 10A resistive (3A AC-15)
- PG 13.5 gland entry



308-1793	Pin Plunger - GLCB01B
308-1816	Roller Plunger - GLCB01C
308-1822	Fixed Side Roller Lever - GLCB01A1A
308-1664	Adjustable Side Roller Lever - GLCB01A2A
308-1850	Fixed Top Roller Lever - GLCB01D
308-1670	Large Side Rotary Lever - GLCB01A9A
308-1838	Coil Spring Actuator - GLCB01E7B
308-1844	Adjustable Side Rotary Rod Lever - GLCB01A4J

Thru-Beam Fork Sensors

- High precision photoelectric sensors ideal for smaller object detection
- Adjustable sensitivity control
- Reversible switching (PNP NO / NC)
- 10 - 30 VDC supply voltage



418-5234	PNP 10mm
418-4922	PNP 120mm
418-5256	PNP 20mm
418-5262	PNP 30mm
418-5278	PNP 50mm
418-5228	PNP 5mm
418-5284	PNP 80mm

Capacitive Proximity Sensors

- PBT bodied block sensors capable of detecting a variety of materials reliably
- Both offer adjustable sensitivity, LED indication and IP67 protection for industrial tasks
- Complete range of capacitive sensors available online - just visit RS online and search 'RS PRO capacitive'



184-5572	43 x 24mm Block, NPN, NO, cable
184-5574	43 x 24mm Block, PNP, NO, cable

Diffuse Photoelectric Sensors

- Direct detect diffused detection with adjustable sensitivity
- 10-30Vdc supply with reverse polarity protected output
- Red sender LED for alignment



288-9805	2 - 100 mm Detection Range PNP
288-9760	10 - 250 mm Detection Range PNP
288-9782	2 - 100 mm Detection Range PNP

PLCS & PROCESS CONTROL

The Workhorses of Industrial Automation

From logic controllers & HMIs to temperature control and signal conditioning we've got the product technologies and brands to help keep your production line running 24/7.



TRIO DIN Power Supplies

- Compact, high reliability DIN rail power supplies for industrial control & automation use
- Options available with 12Vdc, 24Vdc & 48Vdc outputs and 1 & 3-phase inputs from 60W-960W
- Adjustable DC output and LED status indication



883-7374	24Vdc, 3A, 85 □ 264Vac 1ph input	2903147
883-7352	24Vdc, 5A, 85 □ 264Vac 1ph input	2903148
883-7364	24Vdc, 20A, 85 □ 264Vac 1ph input	2903151

Altistart 48 Series

- High performance soft start/ soft stop for your heavy duty machines and pumps with the unique Torque Control System (TCS) for controlled starting and deceleration



608-7053	7.5 kW	ATS48D17Q
608-6993	55 kW	ATS48C11Q"
6087003	75 kW	ATS48C14Q

ControlMaster Controllers & Indicators

- Panel mount 1/8, ¼ and ½ DIN process controllers that are more intuitive, easier to operate and feature packed
- Offering a full-colour TFT display giving a crystal clear view of the process with IP66 facia sealing
- Suitable for basic to demanding ap cascade, feed forward, adaptive, pi



736-2829	Indicator, CM15, 96x48, 100□240Vac	
736-2838	Controller, CM10, 48x96, 100□240Vac	
736-2831	Controller, CM30, 96x96, 100□240Vac	
736-2835	Controller, CM50, 76x144, 100□240Vac	

Modicon M580 automation platform

- The Modicon M580 ePAC (Programmable Automation Controllers) feature openness, flexibility, robustness and sustainability
- The M580 are designed with an Ethernet backbone to optimize connectivity and communications



820-8502	Modicon X80 EIO drop adapter for Ethernet + X-bus racks	BMECRA31210
230-6718	Modicon M580, Ethernet 3 port Factory Cast Ethernet	BMENOC0311
230-6746	Modicon X80 Ethernet RIO drop optical repeaters multimode	BMXNRP0200

Harmony ST6 Basic HMI panels

- Display of text messages, graphic objects, and synoptic views Control and configuration of data
- Touch screen, single touch analogue resistive
- EcoStruxure Operator Terminal Expert software
- ARM Cortex-A8 processor
- Colour TFT LCD display, 16 million colours
- Backlight life span 50000 hours with white
- 16 Levels of brightness



200-7235	7-inch Screen	HMIST6400
200-7234	4.3-inch Screen	HMIST6200
200-7236	10.1-inch Screen	HMIST6500
200-7237	12.1-inch Screen	HMIST6600
200-7238	15.6-inch Screen	HMIST6700

Siemens LOGO! V8.3 with Cloud

- The ever popular Logo! programmable controller now has cloud connectivity out of the box, as well as all the logic functionality you need
- Using Logo! Web Editor V2.0 enables direct connection to Amazon Web Services (AWS), with further platforms planned
- To see the full range visit RS Online and search 'Logo 8.3'



209-7104	12/24Vdc	
209-7103	24Vdc	
209-7102	115/230Vac	

SIRIUS Touch Screen HMI Displays

- Integrated system diagnostics
- Can be configured using WINCC comfort
- Resolution is 800 x 480 pixel



864-3970	TP700 Comfort 7"	6AV2124-0GC01-0AX0
864-3961	KTP700 Basic	6AV2123-2GB03-0AX0

Modicon M262 Motion & Logic Controller

- An IIoT ready motion & logic controller offering class leading connectivity and 3-5ns/Inst processing performance
- Each controller has 4x high speed inputs & digital outputs with motion control versions featuring an Incremental/SSI encoder input, all expandable with Modicon TM3 I/O modules
- 4 ethernet ports acting as a hub including: 2 x Gigabit and 1 x 100Mbps both with Ethernet/ IP and Modbus TCP



201-1450	TM262L10MESE8T - 5ns/inst - Logic	TM262L10MESE8T
201-1448	TM262L20MESE8T - 3ns/inst - Logic	
201-1476	TM262M15MESS8T - 5 ns/inst - 4 axis Motion	
201-1491	TM262M25MESS8T - 3 ns/inst - 8 axis Motion	
201-1461	TM262M35MESS8T - 3 ns/inst - 16 axis Motion	

Universal HMIs from RS PRO

- 16k colour TFT HMIs based on high performance ARM Cortex® A-series processors
- Each HMI offers support for all common PLC protocols and programming via USB
- 128mb Flash memory as standard, with IP65 sealed front facia for maximum application flexibility



215-6604	7" 800x480 - RS232/422/485	
221-3481	4.3" 480x272 - Ethernet, RS232/485/422	
215-6605	7" 800x480 - Ethernet, RS232/422/485	
215-6606	10.2" 1024x600 - Ethernet, RS232/422/485	
215-6607	7" 800x480 - HTML support - Ethernet, RS232/422/485	



CONTROL & SWITCHGEAR

Crucial components in any control system.

Contactors, relays, MPCBs and pushbuttons are electrical components which can fail without obvious signs of wear, causing unforeseen downtime.



CONTACTRON '3 in 1' Hybrid Motor Starters

- The 3-phase hybrid motor starter with reversing function and current monitoring
- 75% less space required
- 75% less wiring time



719-1790	1 kW, 24 V dc, 2.4 A	2900574
719-1768	1 kW, 24 V dc, 2.4 A	2900567
719-1759	4 kW, 24 V dc, 9 A	2900421
719-1746	4 kW, 24 V dc, 2.4 A	2900414

RS510 Series Inverter Drives

- Compact V/ F & SLV (Sensorless Vector) Control drive
- Integrated Modbus RS485 & BACnet Communication
- Integrated Speed potentiometer



122-3410	3.7 kW, 10.1 A
122-3411	0.75 Kw
122-3413	1.5 Kw
122-3414	2,2 Kw

DIN Mount Patch Panels

- DIN rail mounting RJ-45 patch panels suitable for 10/100/1000 Mbps data usage, available with and without surge protection
- Suitable for use with Profinet & Modbus TCP automation networks as well as Ethernet



175-6031	2 x RJ-45	2703015
175-6032	1 x RJ-45 to screw terminals	2703016
175-6033	1 x RJ-45 to push terminals	2703018
175-6034	1 x RJ-45 to IDC terminals	2703019
175-6035	2 x RJ-45, surge protected	2703020
175-6036	1 x RJ-45 to screw terminals, surge protected	2703021
175-6037	1 x RJ-45 to push terminals, surge protected	2703022

D3 Series Microswitches

- Reliable Basic Switch with External Lever
- Available by 0.1 A, 6 A, 11 A, 16 A and 21 A models, all with self-cleaning contacts. 0.1 A utilizes gold alloy crossbar contacts for high reliability at low loads.
- Available with internally or externally fitted levers, and 2 fixing positions for external levers



682-2503	SPST-NO - D3V-16-3C5
682-2370	SPDT-NO/NC - D3V-16-1C25



CONTROL & SWITCHGEAR

AF Series Contactors

- Designed to increase operational uptime and reduce parts inventory for both machine builders and maintainers
- The electronically controlled coil offers benefits over conventional alternatives including wider operating range, AC & DC operation and lower current consumption
- Built-in suppression with connection sets and interlock unit for reversing and star-delta starting are available - 3 pole variants listed



711-6240	4kW 12-20DC NO
711-6073	4kW 24-60AC 20-60DC NO
711-6118	4kW 100-250V AC/DC NO
711-6130	4kW 250-500V AC/DC NO
711-6244	5.5kW 12-20DC NO
711-6076	5.5kW 24-60AC20-60DC NO
711-6111	5.5kW 100-250VAC/DC NO
711-6133	5.5kW 250-500VAC/DC NO
711-6070	7.5kW 24-60AC20-60DC NO
711-6115	7.5kW 100-250VAC/DC NO
711-6137	7.5kW 250-500VAC/DC NO

Altivar Process Variable Speed Drives

- Offers your business optimisation, real-time intelligence and provides the efficiency that you deserve
- The Altivar Process Drive gives you extensive flexibility in water, wastewater, mining, minerals, metals as well as oil, gas, food and beverages



125-3239	1-Phase In, 0.1 - 599Hz Out, 0.55 kW, 230 V ac, 7.9 A	ATV320U06M2C
125-3243	1-Phase In, 0.1 - 599Hz Out, 0.75 kW, 230 V ac, 10 A	ATV320U07M2C
125-3255	1-Phase In, 0.1 - 599Hz Out, 2.2 kW, 230 V ac, 24 A	ATV320U22M2C
125-3262	3-Phase In, 0.1 - 599Hz Out, 5.5 kW, 400 V ac, 20.7 A	ATV320U55N4B
220-8683	3-Phase In, 4 kW, 600 V, 5.8 A, 6.5 A	ATV320U40S6C

Cordline Switch

- Double pole in-line switch for flat or round cable, 2-3 core with dual reversible cable clamp



230-4225	0.41666667	D5MWE
----------	------------	-------

Schneider Electric 24 V ac/dc Safety Relay

- Single channel safety relay output provided with 3 N/O safety relay outputs plus 1 solid-state output PLC signalling
- Slim in design, meaning it can fit nicely even in space constraint spaces



447-4477	XPSAC5121
----------	-----------

Panel Mount Toggle Switches

- The RS PRO toggle switch offers a mechanical life of 30,000 make-and-break cycles
- An operating temperature range from -40°C to 85°C allowing for use in a wide range of situations



209-9375	On-Off-(On)
209-9368	On-None-(On)
209-9373	(On)-Off-(On)
209-9362	On-(On)

Clipsal 56 Series

The 56 Series Chemical Resistant Grey range has been specifically designed for indoor food environments where aggressive alkali/caustic cleaners are used, such as dairies, abattoirs and food processing plants.

Search 'Clipsal 56 Grey' at RS Online



MACHINE & SITE SAFETY

Minimize safety hazards in manufacturing facilities.

Whatever safety system you are maintaining or improving we can help with the widest stocked range of machine & site safety products in the market.



Harmony XPEA Plastic Footswitches

- Available with or without trigger mechanism in 1 or 2 step configurations
- Large surface area of pedal assures stability of foot and operator comfort



537-5270	Without cover, 2 NC + 2 NO	XPEB11
537-5315	With cover, 2 NC + 2 NO	XPEB31
537-5337	With cover, 2 NC + 2 NO	XPEB51

IPS Series Emergency Stop Foot Switch with Cover

- Snap action switch with cover
- Visible operation
- Electrically separated contacts



825-1720	Momentary Contacts, NO/NC	IPSY1A11
-----------------	---------------------------	----------

Nexus 110 Sounders

- Nexus sounders have 3 alarm stages, 64 tones and a volume control for greater flexibility
- First-fix, wire to base technology
- IP66 rated
- 5 cable entries
- UL V0 rated fire retardant red polycarbonate case



klaxon

539-4697	10-60Vdc	PNS-0013
907-6306	24-48Vac	PNS-0020
539-4726	110/230Vac	PNS-0018

Harmony XVU Modular Tower Lights

- The innovative Harmony XVU range of Ø 60 mm tower lights and sounders offers multiple lighting patterns, mounting flexibility, modern aesthetics, and unrivalled brightness.
- IP65 and IP54 protection ratings for sounders
- Ultra-bright LED with 360° visibility
- 6 colors with 4 light patterns: steady, flashing, blinking, and rotating



881-2797	LED Beacon Green, Steady Light Effect	XVUC23
881-2791	LED Beacon Red, Steady Light Effect	XVUC24
881-2832	Beacon Tower Terminal Unit	XVUC21B
881-2823	Buzzer	XVUC9S

LED Flashing Beacons

- 4 x 4W LED provide a working life of more than 50,000 hours Meets IP67 internal protection standard (weatherproof)
- Offers extreme temperature reliability: -30°C to +50°C
- 4 flash patterns - static, single, double & quad
- 2-year warranty



907-5971	Red 45mm high	
907-5977	Amber 45mm high	
907-5999	Red 95mm high	
907-5996	Amber 95mm high	

Stainless Steel Enclosed E-Stops

- Robust Stainless Steel 316L enclosed emergency stops perfect for wash-down or harsh environments with 40mm head
- Compliant with EN ISO 13850, IEC 60947-5-1 and 60947-5-5 - twist to reset
- Padlockable versions can be locked in the 'off' or triggers position for maintenance tasks



826-4390	2NC/NO, M20 Gland Entry	231001
826-4394	2NC/NO, ½" NPT Gland Entry	231002
826-4404	Padlockable, 2NC/NO, M20 Gland Entry	231005
826-4407	Padlockable, 2NC/NO, ½" NPT Gland Entry	231006

Safety Light Barriers

- Compact single beam light barriers ideal for handling machinery, large vehicle washers and packaging machines
- Choice of 15m or 75m range with M12 connector and safe OSSD PNP outputs to performance level PLC
- Aluminium cased and sealed to IP67 - corrosion resistant and wash proof



146-5815	SLB240 Sender, 15,000mm range	SLB240-E-1-ST
146-5816	SLB240 Receiver, 15,000mm range	SLB240-R-1-ST
146-5818	SLB440 Sender, 75,000mm range	SLB440-E-1-ST-H-EH
146-5820	SLB440 Receiver, 75,000mm range	SLB440-R-1-ST-H-EH

Safety Rated Limit Switches

- Limit switches with safety rated snap-action contacts housed in robust glass fibre reinforced plastic bodies
- M20 threaded gland entry and IP67 sealed
- UL/CSA/CE certified



179-7568	Pin Plunger	SND4111-SP-C
179-7567	Roller Plunger	SND4112-SP-C
179-7569	Adjustable Roller Lever	SND4108-SP-C
179-7570	Roller Lever	SND4104-SP-C

ER Cable Switch With E-Stop

- Long rope spans up to 80m means fewer number of switches required per application
- Tension indicator makes the system easy to set up and to maintain the proper rope tension
- IP67 (NEMA 6) enclosure enables the switch to withstand water wash down cleaning



757-9106	40m, NO/2NC, Straight	ER5018-021ME
-----------------	-----------------------	--------------

ABB Panel Mount Emergency Button

- Modular Emergency Stop
- Mushroom 40mm
- Red - Non-illuminated



757-8897	Twist to Reset	1SFA611523R1001
-----------------	----------------	-----------------

XCSA Safety Interlock Switches

- 3 positive opening contacts as standard (on guard opening)
- A key operated lock enables positive locking of the guard
- Optional version with orange LED to indicate guard open/closed



397-2166	3NC, Key, Zamak	XCSA801
397-2150	2NC/1NO, Key, Zamak	XCSA701

Illuminated Push button

- Vandal resistant stainless steel switch body & button
- Dot or ring illumination
- Single pole, push to make
- Bright Daylight LEDs
- Separate LED terminals
- 750,000 mechanical operations minimum



708-3052	Red/Green 19.2mm	MPI002/28/D1
708-3046	Green	MPI002/28/GN
708-3059	Blue/Green	MPI002/28/D5
708-3068	Amber	MPI002/TERM/AM

Gate Valve Lockouts

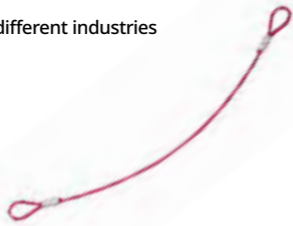
- Made of rugged injection-molded polypropylene
- Includes a unique knock-out center that accommodates OS&Y or "rising stem" valves
- These gate valves come are available in 5 sizes, to effectively cover valve hand wheels of 1" to 13" (25 to 330mm) in diameter



237-0520	254mm Attachment, Red	065563
237-0521	330.2mm Attachment, Red	065564
237-0522	254mm Attachment, Yellow	065593
237-0523	330.2mm Attachment, Yellow	065594
237-0524	165.1mm Attachment, Green	065597
237-0526	254mm Attachment, Green	065598
237-0527	330.2mm Attachment, Green	065599
237-0528	25.4mm Attachment Point, Red	065666
237-0559	330.2mm Attachment Point, Kit	196212

Double looped cable lockout

- Ideal for locking out large valves in many different industries
- Many customers use large, heavy chains to lock out valves
- This cable is much more lightweight and are better visual deterrent that the isolation point is locked



237-0538	0.61 M	131063
237-0539	1.22 M	131064
237-0540	1.83 M	131065
237-0541	2.44 M	131066

Cylinder Tank Lockout

- Revolutionary rugged polystyrene plastic device is used to lockout cylinder tanks, including propane tanks on fork trucks and standalone propane tanks.
- Special design allows device to be used in tight spaces
- Valve stem hole is 1.25" in diameter



237-0516	1.25" in diameter	46139
-----------------	-------------------	-------

Pull Handle Butterfly Valve Lockout

- Exclusive, anti-pivot lockout device fits the full range of pull handle valve sizes, from ½ in. to 8 in. diameter
- A convenient, one-piece design that stays together whether in use or in storage
- Holds up to four worker padlocks



237-0558	0.5 - 8 in	170220
-----------------	------------	--------

Transparent push button lockout device

- Prevent the unauthorised use of push button emergency devices
- Suitable for 16 mm push button diameters
- Made of rugged polycarbonate
- -20° C to 80°C operating temperature



237-0542	2370542	139793
-----------------	---------	--------

Miniature circuit breaker lockouts

- Safe and effective method for locking out miniature circuit breakers
- Easy installation with no tools required
- Low profile design allows panel door closure
- Available for single and multi-pole breakers
- Attach a Brady safety padlock to complete lockout



237-0544	Pack of 1	149514
237-0545	Pack of 6	149515

Steel Lockout Hasp With Tab

- Steel Lockout Hasps from Brady® have tamperproof interlocking tabs to prevent unauthorized opening.
- Bright red vinyl insulation
- 6 padlocks can be attached
- Maximum 9.53 mm shackle diameter



237-0534	4.372 H x 1.575 W	105718
237-0535	4.97 H x 1.575 W	105719

BatteryBlock Forklift Power Connector Lockout

- Keep forklift and lift vehicles locked out and locked down. Non-conductive pins ensure the device stays tightly in place during off-shift periods or maintenance projects
- Single-piece design don't need to keep track of extra pieces
- Non-conductive pins ensures the device stays secure during maintenance projects and off-shift periods



237-0557	2.62 H x 5.28 W	150841
-----------------	-----------------	--------

Emergency Eyewash Kit

- Eyewash station provides a specialized first aid unit for eye injuries
- Tough plastic translucent case
- Dust-resistant & keeps products clean



447-721	Eyewash Kit	856592
----------------	-------------	--------

Eyewash Station

- 10 units x 15ml sterile eyewash with disposable eye baths



447-755	10 units x 15ml	856757
----------------	-----------------	--------

How to Wash Your Hands Guidance Safety Poster

- Durable, laminated construction
- Highly visible, can be located anywhere



901-1377	420 mm X 590mm
-----------------	----------------

Electrician's Lockout Kit

- An essential addition to any electrical tool kit, this starter kit is from our high-quality own brand RS PRO
- Offering lockouts for energy source, breakers, electrical plugs, wall switches, MCB's, fuses and much more for worker protection



862-5244	27 products
-----------------	-------------

Heavy Duty Cable Protectors

- Weather and skid proof
- Black base and yellow cover provide good visibility
- High-strength cable grooves, can withstand up to 20 tons per axle



136-5423	H/D CABLE PROTECTOR DUAL 2 CHNL 32/38MM
-----------------	---

Softpack First Aid Kit

- Simple design and a practical layout in a compact size
- Handy soft canvas case with zip
- Available in a choice of 3 colours



447-737	Carrying Case	848794
----------------	---------------	--------

Industrial First Aid Kit

- Complies with Safework Code of Practice 2012 for Workplaces
- Certified to: ISO 13485
- TGA Approved AUST L 142658
- Australian Manufactured
- Rugged, lightweight plastic case
- Keeps contents secure and free of dust
- Ensures workplace compliance
- Ideal for industrial environments



241-5321	Workplace First Aid Kit	FWP824H
-----------------	-------------------------	---------

Electrical Safety Mat

- Maximum operating voltage 1000 V ac
- Insulating mat class 0
- Made from elastomer
- Light weight
- Colour Grey
- Various sizes available



918-2482	600mm x 1m x 1.5mm	=
-----------------	--------------------	---

Warning Cones

- Class 1 reflective cone
- Made of polypropylene - very durable
- Two reflective stripes - highly visible even in the dark
- Colour: orange and white
- General use cone - optional chain or hook can be attached
- Easy to use - just place them where you want them, no need to connect them
- Can be stacked when not in use - convenient storage



503681	30 CM
503754	50 CM

KX Small Enclosures

- Steel enclosures ideal for housing electronic, electrical and mechanical components, equipment, and devices
- IP66 rating prevents ingress of environmental contaminants such as dust or water
- NEMA 4 protection category
- For full range of sizes, visit our website



202-3818	150(W) x 150(H) x 80(D) mm
202-3826	150(W) x 150(H) x 120(D) mm
202-3821	200(W) x 200(H) x 80(D) mm
202-3836	200(W) x 200(H) x 120(D) mm
202-3884	200(W) x 200(H) x 120(D) mm (with chassis and gland plate)
202-3901	200(W) x 300(H) x 155(D) mm (with chassis and gland plate)
202-3841	300(W) x 300(H) x 120(D) mm

AX and KX Accessories

- Commonly used accessories for the AX and KX range of enclosures
- SZ wall mounting bracket is ideal for convenient one-person assembly of wall-mounted enclosures, even in confined spaces
- Mini-comfort handle is used with lock inserts or 40 and 45mm semi-cylinders, as well as lock and push-button inserts
- Lock insert for use with the mini comfort handle is supplied with two keys



224-7046	SZ wall mounting bracket
202-3972	Mini-comfort handle
283-6126	Lock insert no. 3524E

TopTherm Series Filter Fan

- Easy to assemble, highly efficient design that enables greater pressure stability and more air flow
- Grille latch allows fast filter replacement
- Supply voltage 230Vac is connected via spring clamp terminals
- Visit our website for full range



756-9758	Fan 20m ³ /h 116.5m ²
756-9843	Filter for 20m ³ /h 116.5m ² fan
756-9767	Fan 55m ³ /h 148.5m ²
756-9840	Filter for 55m ³ /h 148.5m ² fan
756-9777	Fan 105m ³ /h 204mm ²
756-9852	Filter for 105m ³ /h 204mm ² fan

AX Steel Enclosures

- AX compact enclosure is a basic enclosure which is ideal for housing various electronic, electrical and mechanical components, equipment, and devices.
- IP 66 protection
- NEMA 4 protection category
- For full range, visit our website



202-3899	300(W) x 300(H) x 210(D) mm
202-3900	300(W) x 400(H) x 210(D) mm
202-3906	380(W) x 600(H) x 210(D) mm
202-3907	400(W) x 500(H) x 210(D) mm
202-3908	500(W) x 500(H) x 210(D) mm
202-3915	600(W) x 600(H) x 250(D) mm
202-3923	600(W) x 760(H) x 350(D) mm

AX Glass Reinforced Plastic Enclosures

- Compact plastic enclosure is ideally suited to outdoor applications
- There are numerous mounting bosses inside the enclosure which allow individual interior configuration on a 25mm pitch pattern
- NEMA 4 protection category
- UL94 V-0 fire protection
- IP66 rated



217-5180	250(W) x 350(H) x 150(D) mm
217-5181	300(W) x 400(H) x 200(D) mm
217-5182	400(W) x 400(H) x 200(D) mm
217-5183	400(W) x 600(H) x 200(D) mm
217-5187	600(W) x 600(H) x 200(D) mm
217-5188	600(W) x 800(H) x 300(D) mm
217-5191	800(W) x 1000(H) x 300(D) mm

IoT interface

- Central component for the intelligent networking of Rittal cooling solutions or sensors for monitoring physical ambient conditions
- Equipped with a wide range of interfaces and protocols, it is used to collate and transmit data to superordinate IT systems or to systems for the local monitoring of machine status
- Communication protocol MODBUS/TCP, OPC-UA, SNMP



191-8515	IP20
-----------------	------

1554 Series Enclosures

- High quality ABS and PC sealed enclosures with IP66 are ideal for machine applications
- Casketed lid with two piece "tongue & groove" construction provides protection against access of oil, dust and water
- For full range of sizes visit our website



230-6465	88.9 x 61.0 x 88.9mm
230-6464	88.9 x 88.9 x 88.9mm
230-6469	180.3 x 61 x 119.4mm
230-6480	180.3 x 88.9 x 119.4mm
230-6483	200.7 x 88.9 x 119.4mm
230-6488	238.8 x 160 x 119.4mm

IP69K Stainless Steel Enclosures

- Lockable wall mounted enclosures, with IP69K protection ensuring the contents will be safely stored and protected
- Pull out hinge on door allows it to be removed for easy access
- Double lipped edge to ensure higher strength and ease of installation



758-7034	200 x 300 x 300mm
758-7037	200 x 300 x 400mm
758-7220	200 x 400 x 400mm
758-7223	200 x 400 x 600mm
758-7043	300 x 800 x 600mm

24Vdc Axial Cooling Fans

- DC sealed sleeve axial fans provide a general purpose, compact and reliable solution to a variety of applications
- Sealed sleeve technology provides a cost-effective alternative to ball bearing fans, with a longer life expectancy (>50,000 hours) than standard sleeve bearing fans
- Wide range available - visit our website for other options



668-8801	40 x 40 x 10mm 1.4W 11.4m ³ /h
668-8814	40 x 40 x 20mm 1.7W 15.3m ³ /h
541-5205	60 x 60 x 15mm 1.4W 27.2m ³ /h
668-8836	60 x 60 x 25mm 3.6W 39.1m ³ /h
668-8833	80 x 80 x 25mm 2.4W 68m ³ /h
703-3448	80 x 80 x 38mm 13W 168.2m ³ /h
541-5435	120 x 120 x 32mm 6W 203.9m ³ /h
541-5407	120 x 120 x 38mm 7W 178.4m ³ /h

SM Compact Floor Standing Enclosures

- Manufactured from sheet steel with a surface finish of epoxy-polyester powder supplied with mounting plate
- IP55 protection conforming to IEC 60529
- IK10 protection conforming to IEC 62262
- Certifications UL, BV, DNV
- Green premium product
- Mercury free



220-0210	1200 x 800 x 300mm
220-0211	1400 x 600 x 400mm
220-0214	1600 x 600 x 300mm
220-0216	2000 x 600 x 500mm
220-0215	2000 x 1000 x 400mm
220-0209	2000 x 1200 x 400mm

A48 Fibre Glass Enclosure

- IP66 enclosure with clear front door is ideal for highly corrosive environments
- Flame retardant to UL 94-5V
- Integrated threaded insert for mounting plates which are supplied separately
- Approvals UL, CSA, VDE
- Supplied with wall mounting bracket and fixing kit



258-7509	167 x 267 x 216mm
258-7515	167 x 318 x 267mm
258-7521	219 x 370 x 319mm
258-7537	219 x 420 x 370mm

HVR Pentagon Anti-Condensation Heaters

- Designed for use where a low wattage heater is required to prevent condensation
- Comprises a vitreous enamelled resistor mounted in a sheet steel case with removable sheet steel cover
- Input voltage 230Vac
- For full range visit our website



603-328	100W
500-112	40W
605-605	60W
605-582	20W
500-134	80W



CABLES & CONNECTORS

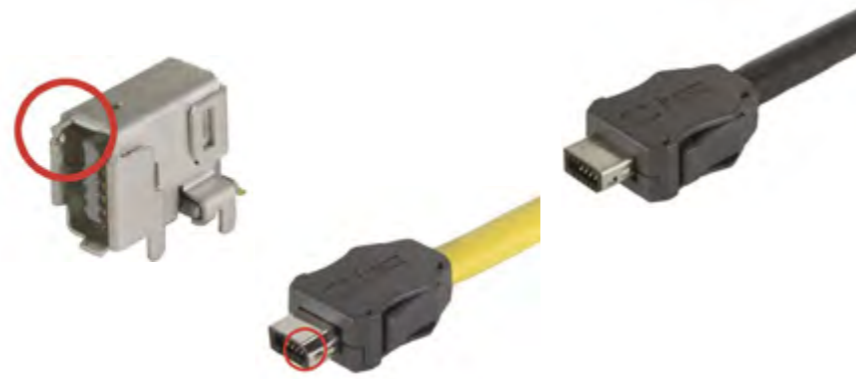
Innovative Connection Solutions.

Cables, wiring, connectors and cable management from the leading brands, meeting the needs of challenging environments.



ix-Industrial®

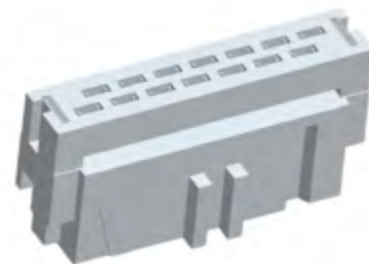
- RJ45 performance in 70% less space – reduced PCB real-estate, increased stacking density
- Positive snap-in mating feature – robust metal construction provides effective audio confirmation of connection
- 5-point PCB THR hold-down contacts – high retention force & excellent shock/vibration performance



178-4192	Type B, solder termination	09451819000XL
178-4193	Type B, IDC termination	09451819001XL
178-4195	Female PCB connector	09452819000333
178-4180	Type A, solder termination	09451812560XL
178-4182	Type A, IDC termination	09451812561XL
178-4184	1m cable assembly	09482612749010

14-Way IDC Connector Socket

- For 1.27 mm (0.05 inch) pitch ribbon cable.
- These female socket connector contacts mate with 0.64 mm (0.025 inch) square or round posts with 6.22 mm (0.245 inch) max. and 4.45 mm (0.175 inch) min. lengths which could have been previously soldered into the PCB.



189-5879 2-Row

1-215915-4

Extension Sockets & Appliance Connectors

- All connectors have impact resistant, UV stabilised mouldings
- The IP66 rating can be achieved when extension socket/ connectors are used in conjunction with compatible accessories such as 56P Plugs, 56PA Plugs and 56AI Appliance Inlets



214-1825	3 Flat PIN, 250V, 10A	56CSC310-RO
867-4589	4 Round PIN, 500V, 32A	56CSC432-EO
867-4573	5 Round PIN, 500V, 32A	56CSC532-EO



Buccaneer Standard Sealed Power Connectors

- IP68
- UL94HB Housing
- Insulation Resistance of >104 MΩ @ 500 V dc



275-5342	Screw terminal plug	PX0745/P
275-5364	Screw terminal socket	PX0745/S
275-5392	Inline coupler plug	PX0746/P
275-5409	Inline coupler socket	PX0746/S

Metric Nylon Cable Glands

- IP68 rated glands supplied with a locknut
- Available in a wide choice of colours and sizes
- Sold in bag of 5
- For full range visit our website



669-4654	M12 x 6.5mm
669-4667	M16 x 7mm
669-4673	M20 x 14mm
669-4676	M25 x 18mm
669-4670	M32 x 25mm
669-4689	M40 x 32mm
669-4682	M50 x 38mm

Slide On Cable Marker Kit

- Manufactured from soft, strong and durable PVC these high quality RS PRO markers have been designed to resist oil, grease and abrasion
- 0.75-3.5mm kit has 4500 markers
- 2-8mm kit has 3600 markers
- Visit our website for full contents



914-0602	0.75-3.5mm
914-0592	2-8mm

Cat 6 Coloured Patch Leads

- High performance Cat 6 Ethernet cable with 100% copper for error-free Multi Gigabit 1/2.5/5Gbps connections
- Fluke patch cord tested to comply w/ANSI/TIA-568-2.D Category 6 & ETL Verified
- For full range visit our website



186-1984	Grey
192-9537	Red
186-1995	Blue
186-1990	Black
192-9553	Yellow

1400 Series Cable Chain

- Unique design allows rapid opening on both sides along inner radius
- Contains integrated strain relief
- 100m lengths
- Visit our website for the full range



720-2751	50.0 x 21mm; 48mm min. bend radius
756-9124	51.5 x 28mm; 38mm min. bend radius
756-9127	51.5 x 28mm; 75mm min. bend radius
756-9121	51.5 x 28mm; 100mm min. bend radius
756-9133	63.5 x 28mm; 75mm min. bend radius
756-9137	63.5 x 28mm; 100mm min. bend radius



MECHANICAL COMPONENTS

Keeping the process moving.

We deliver best value and highest quality products and services that ensure reduced life cycle costs and maximum asset availability. All our hydraulic and pneumatic, plumbing & pipeline products are supplied from leading manufacturers such as WIKA, SMC, Bourdon, Festo, Fluke, Druck and of course RS PRO.



Rotary Knob Pneumatic Manual Control Valves

- Highly durable POM (polyoxymethylene) body material
- Maximum operating pressure of 10 bar
- Two ports, two positions
- Other sizes available (including versions for changes in hose diameter) on the RS web site



916-0968	6mm - 6mm (Pack of 10)
916-0962	8mm - 8mm (Pack of 10)
916-0971	10mm - 10mm (Pack of 10)

Automatic Drain Valve

- Precise self-activated control of fluids and air to a specified programme (media: air, gases, oo, oil etc.)
- Automatically opens for a set time to drain condensation
- Length of time open (0.5 to 45 minutes) and frequency both adjustable
- Discharge time 0.5 to 10 seconds
- Minimal risk of internal blockages due to increased internal tolerances
- LED indicator for operational status



725-125	240V 50Hz
----------------	-----------

Advanced Polyethylene (APE) Tubing

- 50% reticulated material
- Balance between flexibility and pressure/temperature resistance
- Resistant to a wide range of aggressive chemicals
- UV-stabilised: ideal for outdoor applications



144-7831	BLACK 8X5,75 DRUM 150M	1015Y08F01
144-7829	BLACK 6X4 DRUM 150M	1015Y06F01
144-7828	INCOLOR 6X4 DRUM 150M	1015Y06F00

SKF CAHB-10 Series Linear Actuator

- Compact design
- Robust and reliable
- Designed for harsh environments
- High load capacity
- Lubricated for service life
- Durable, lightweight and corrosion resistant



764-3477	LINEAR ACTUATOR CAHB-10 STROKE 50MM 24V	CAHB-10-B3A-050158AAA000-000
-----------------	--	------------------------------

Aluminium Conveyor Struts

- From RS PRO, Aluminium extrusion for use with conveyor systems
- Compatible with Item profile accessories and structural systems products



850-8498	2000mm
850-8495	1000mm

Galvanized Steel Round Conveyor Roller

- Conveyor tracks based on aluminium profiles with uniform rollers made of plastic and steel
- For fast, simple construction of conveyor or manual slide sections
- Can be used in conjunction with Bosch Rexroth Mechanical components



665-7261	40mm x 525mm 500N	3 842 537 163
665-7273	40mm x 325mm 150N	3 842 525 741

Conveyor Rollers

- RS PRO introduces these sturdy cages for roller track profiles AL. They support 3 rollers by means of axles; the end piece provides a neat finish at the end of the profile



229-9165	Black, 26mm x 33.3mm (Bag of 10)
229-9166	Black, 26mm x 33.3mm (Bag of 100)
229-9164	Grey, 26mm x 33.3mm (Bag of 10)
229-9162	Red, 26mm x 33.3mm (Bag of 10)

Heavy Duty Conveyor Turntable

- This RS PRO industrial conveyor turntable lets you change the direction of your conveyor system to sort products into multiple lanes
- It's fitted with precision ball bearings that reduce friction to provide smooth, seamless movement



278-7844	400mm, 7.5kN Load Capacity
278-7872	650mm, 15kN Load Capacity
278-7850	500mm, 9kN Load Capacity

Single Roller Units

- RS PRO introduces this compact roller unit for roller tracks
- They feature a very small centre distance and maximum number of axles for minimum vibrations and reduced point load on the goods
- Roller units come completely pre-assembled



229-9196	Black, 9mm x 50mm 100N Load Capacity
229-9177	Grey, 24mm x 33.3mm 150N Load Capacity
229-9175	Green, 24mm x 33.3mm 150N Load Capacity
229-9193	Green, 9mm x 50mm 100N Load Capacity

Igudur® Round Plain Conveyor Rollers

- Igus® range of knife-edge conveyor pulleys provide precise and lubricant-free deflection for conveyor technology applications
- These can be used in many application areas including, food processing, automation, material handling and packaging



866-1754	14mm x 70mm	A180RLM-0814-70
866-1763	9mm x 325mm	P210RLM-0409-50

20 Tooth Aluminium Timing Belt Pulleys

- Extensive range of High Torque Drive (HTD) timing pulleys in pilot bore type and taper lock bush type
- Material aluminium, flanges steel
- HTD, CXP and CXA belts are all designed to run on these pulleys
- For full range visit our website



778-4718	6mm width 2mm pitch
286-4547	6mm width 2.5mm pitch
778-4770	6.4mm width 2mm pitch
146-5385	9mm width 3mm pitch
286-5663	10mm width 5mm pitch
182-666	14.3mm width 5mm itch
146-5404	15mm width 3mm pitch
745-696	16mm width 5mm pitch

VDMA Profile Cylinders

- CP96-C series double-acting pneumatic cylinders feature both air and bumper cushioning reducing cycle time and the noise at the end of the stroke
- Full range available online - visit our website for more details



916-6730	32mm bore 25mm stroke
916-6752	32mm bore 80mm stroke
916-6724	32mm bore 160mm stroke
916-6733	32mm bore 200mm stroke
916-6755	32mm bore 500mm stroke
916-6761	40mm bore 100mm stroke
916-6796	50mm bore 100mm stroke
917-8755	63mm bore 80mm stroke

Pneumatic Tube PUN-H

- Flexible polyurethane
- High resistance to microbes and hydrolysis
- Food-safe
- Suitable for use with energy chains
- Operating medium: compressed air, vacuum, water
- Also available as DUO twinned plastic tubing
- Examples shown, all 50m length



FESTO

121-6292	PUN-H-6X1-BL blue, 6mm OD
126-2776	PUN-H-6X1-NT natural 6mm OD
121-6294	PUN-H-6X1-SW black, 6mm OD
122-8469	PUN-H-8X1,25-BL blue, 8mm OD
122-8458	PUN-H-10X1,5-BL blue, 10mm OD
122-8461	PUN-H-12X2-BL blue, 12mm OD

Back Entry Pressure Gauges

- Suitable for all gaseous and liquid media that will not obstruct the pressure system or attack copper alloy parts
- Can be used within small capacity compressors, medical engineering, heating and air conditioning applications
- Dual scale - bar and psi
- 50mm diameter



822-4018	4 bar
822-4011	6 bar
822-4015	10 bar
218-0137	16 bar
218-0138	25 bar

Food Line Stainless Steel Deep Groove Ball Bearings

- Prelubrication with high-quality grease registered by NSF as category H1 A nitrile rubber seal material that is coloured blue for optical detectability and is compliant with FDA and EC recommendations
- Stainless steel (440C) for inner ring, outer ring, rolling elements and cage
- Stainless steel backing plate for the seal



125-1229	10mm Deep Groove Ball Bearing 26mm O.D	W 6000-2RS1/VP311
125-1240	20mm Deep Groove Ball Bearing 47mm O.D	W 6204-2RS1/VP311
125-1236	8mm Deep Groove Ball Bearing 22mm O.D	W 608-2RS1/VP311
125-1241	25mm Deep Groove Ball Bearing 52mm O.D	W 6205-2RS1/VP311
125-1242	30mm Deep Groove Ball Bearing 62mm O.D	W 6206-2RS1/VP311

3193 Series Tee Threaded Adaptors

- Materials with high resistance
- Durability of product and equipment
- 100% leak-tested in production
- Full bore for optimum flow



245-5189	G 3/8 Male, Push In 10 mm	3193 10 17
245-5188	G 1/4 Male, Push In 10 mm	3193 10 13
245-5190	G 1/4 Male, Push In 12 mm	3193 12 13

Polyurethane Pneumatic Tubing

- Flexible silicone free polyurethane tubing ideal for in panel routing of air circuits supplied in 30m reels
- Can be used for both pneumatic control and chemical transfer lines from -50 to +55°C
- Full range from 4 to 12mm OD available online



917-2369	6mm black
917-2387	6mm blue
917-2378	8mm black
917-2381	8mm blue
917-2393	10mm black
917-2371	10mm blue

VUVG Solenoid Valves

- Compact range of valves
- Minimal installation space
- Voltage options
- High flow rate
- Flexible modular system



121-5890	5/2 Sol/Pneu Spring, 14mm width, G1/8, 3 pin
202-1320	5/2 Sol/Mech Spring, 10mm width, G1/8
175-2143	5/2 Sol/Pneu Spring, 14mm width, G1/8
121-5880	5/2 Sol/Pneu Spring, 10mm, M5, 3pin
136-6936	5/2 Sol/Mech Spring, 10mm width 24Vdc
202-1385	5/2 Sol/Sol, 14mm width, G1/8

Digital Pressure Sensors - SPAN-B

- PNP / NPN switchable
- Pressure and vacuum
- Pressure and vacuum Breaking
- High Contrast display
- Compact design



126-0229	-1 to +1bar, 1/8
175-2231	-1 to +1bar, IO-Link®
175-2239	-1 to + 1bar, 4mm push in
175-2237	-1 to +1bar, 1/8

Guided Drive - DFM

- Drive and guide unit in a single housing
- High resistance to torques and lateral forces
- Plain or recirculating ball bearing guide
- Wide variety of mounting and attachment options
- Wide range of variants for customised applications



121-5383	DFM-16-20-P-A-GF 16mm x 20mm
121-5382	DFM-16-10-P-A-KF 16mm x 10mm
121-5412	DFM-25-25-P-A-GF 25mm x 25mm
121-5381	DFM-16-10-P-A-GF 16mm x 10mm
121-5367	DFM-12-20-P-A-GF 12mm x 20mm
121-5377	DFM-12-80-P-A-GF 12mm x 80mm

MS Series Air Preparation Units

- Filter, regulator and lubricator functions in a single unit
- High flow rate
- Highly efficient in removing contaminants
- Good control characteristics
- Minimal pressure hysteresis



136-6744	G¼ FR/L 0.5-12 bar, 40µm, 900l/m
202-3038	G½ FR/L 0.3-7 bar, 40µm, 4800l/m
136-6743	G½ FR/L 0.5-12 bar, 40µm, 3700l/m
136-7051	G¼" 0.5-12 bar F/R with On/Off Valve, 40µm, 1700l/m
202-3062	G3/8 FR/L 0.5-12 bar, 40µm, 3500l/m
136-7052	G½" 0.5-12 bar F/R with On/Off Valve, 40µm, 5100l/m

Flow Sensors SFAW

- Input connection options
- With optional integrated temperature sensor
- Connection to higher-level systems via 2 switching outputs, an analogue output and/or an IO-Link® interface
- Certification: RCM, c UL us Listed (OL)
- Rotatable display, 90° anticlockwise and 180° clockwise



175-2241	1.8 to 32 l/m, G½, IO-Link®
175-2242	5 to 100 l/m, G¾, IO-Link®
175-2243	5 to 100 l/m, G1, IO-Link®

Round Line Cylinder DSNU - PPS

- Very durable cylinder based on ISO 6432 with self-adjusting end-position cushioning and extensive accessories
- Wide range of variants for customised applications
- Good running performance and long service life
- Self-adjusting pneumatic end-position cushioning which adapts optimally to changes in load and speed
- For position sensing



121-4735	DSNU-16-50-PPS-A 16mm bore, 50mm stroke
121-4650	DSNU-25-100-PPS-A 25mm bore, 100mm stroke
121-4716	DSNU-16-125-PPS-A 16mm bore, 125mm stroke
121-4688	DSNU-25-50-PPS-A 25mm bore, 50mm stroke
121-4729	DSNU-16-25-PPS-A 16mm bore, 25mm stroke
121-4726	DSNU-16-20-PPS-A 16mm bore, 20mm stroke

TEST & MEASUREMENT

Maintain production reliability and asset uptime.

Essential instruments for troubleshooting, and to help ensure processes are operating within specification. Our in-house calibration service provides confidence on new and existing equipment accuracy.



RS50 Series Digital Thermometers

- Easy to read LCD display
- RS51 and RS52 offers min/max readings as well as °C or °F
- The RS53II and RS55II further offers a 16,000 reading datalogger, as well as support for J & K Type thermocouples
- 2x channel input models RS52 and RS55II also offer differential measurement
- Single Type K bead thermocouple supplied for each input



Fluke 170 Series Multimeters

- Comprehensive functionality from this popular range which offers precision, reliability and ease of use
- The ideal choice for troubleshooting and repairing electrical and electronic systems
- True RMS capability ensures accurate results even when testing on irregular AC circuits
- The Fluke 177 adds backlit display, and the Fluke 179 further adds the ability to take temperature readings



123-3215	RS51 K Type 1 input
123-3216	RS52 K Type 2 inputs
123-3217	RS53II J or K Type 1 input, datalogger
123-3218	RS55II J or K Type 2 input, datalogger

PC15250 Phase Sequence Indicator

- Simple and quick 3 phase continuity and rotation indicator ensures 3-phase outlets and machines are wired correctly
- Retractable GS38 probe shields give a choice between using long, exposed tips for reaching inaccessible contacts, and safer, shorter lengths for increased safety
- Input voltage range: 50V to 600Vac (Phase to Phase)
- Conforms to GS38 and BS EN61557-7, CAT IV 600V



782-4424	PC15250
781-8794	With RS Calibration

TBS2000B Series Oscilloscopes

- 9-in WVGA colour display with 15 horizontal grids – shows 50% more signal
- Up to 200MHz bandwidth, 5M point record length, 2GS sample rate for faster debug and validation
- HelpEverywhere® function provides helpful onscreen tips for students and new users



200-6294	TBS2072B 2 channel, 70MHz
200-6295	TBS2074B 4 channel, 70MHz
200-6297	TBS2102B 2 channel, 100MHz
200-6298	TBS2102B 4 channel, 100MHz
200-6299	TBS2202B 2 channel, 200MHz
200-6300	TBS2204B 4 channel, 200MHz

MIT200 Insulation & Continuity Testers

- Insulation testing to 1000MΩ
- Continuity testing at 200mA down to 0.01Ω
- Live circuit warning (voltage display) and test inhibit
- Digital/Analogue display
- CATIII 600V
- Choice of 2 or 3 test voltages depending on model



535-3185	MIT220 250V/500V
535-3191	MIT230 250V/500V/1000V

FLIR C5 Thermal Imaging Camera

- Featuring a thermal camera, visual inspection camera, and LED flashlight, the powerful FLIR C5 makes it easy to identify hidden problems
- Quickly find hidden faults and reduce diagnostic time
- Pinpoint and communicate potential issues faster
- With 3.5 inch integrated touchscreen, 160 x 120 true thermal imager and 5-megapixel visual camera
- Thermal camera measures -20 to 400°C



201-6980	160 x 120pixel
----------	----------------

FLIR C5 (incl. Wi-Fi)



831-8996	IntelliTone™ Pro 200
----------	----------------------



DCM305e - Earth Leakage Clampmeter

- 0.001mA resolution - TRMS reading
- Up to 100A range for standard AC current measurements
- Low pass filter to aid stability of readings
- Auto, data and peak hold - 40mm jaw
- Analogue bargraph display for trending



179-4710	CAT III 300 V
----------	---------------

FLIR MR176 Moisture Meter

- High-quality and reliable
- Thermal image resolution of 4800 pixels
- Document readings and images to share via included USB cable
- Review images and generate reports with free FLIR tools software
- Easy targeting with a laser pointer and display cross-hairs
- Vapor pressure measurement 0.0kPa to 12.0kPa
- Temperature measurement 32°F to 122°F (0°C to 50°C)
- Power source battery type



922-6236	4800 pixels
----------	-------------

MR176

IntelliTone™ Pro 200 LAN Toner and Probe Kit

- Reject noise and false signals
- Locate the correct cable bundle
- Isolate a cable within the bundle, despite cable bleed
- Tests for continuity
- Identify and diagnose 10/100/1 Gb Ethernet link connectivity with NIC / hub indication



831-8996	IntelliTone™ Pro 200
----------	----------------------

MT-8200-60-KIT

Calibration Available

The RS calibration service maintains compliance across a wide range of assets to international standards. From thermometry to test meters and measuring devices, you can be confident your equipment is compliant. Buy new, calibrated, ready-to-use equipment or, request recalibration of your own products with a fast turnaround and delivery. ISO9001:2015 Standard or NATA-accredited laboratory.

Learn more at au.rs-online.com/calibration



Bluetooth Power Clamp Meter

- 10,000 count digital display
- 50 segment analogue bar graph
- Large LED backlit display
- Bluetooth connecting
- Auto store up to 1000 memories
- Data logging up to 9,999 records
- True RMS reading on AC and AC+DC mode



162-4455 Bluetooth Clampmeter

True RMS AC/DC Clamp Meter

- Measures current between 0.5Aac/dc and 1000Aac/dc
- Large, easy-to-read backlit LCD display
- Additional measurements for resistance, capacitance, frequency, diode test, duty cycle and continuity and features a dual input thermocouple temperature and non-contact voltage detector
- Designed for heavy duty use in tough environments



200-3702

RS50 Series Digital Thermometers

- Easy to read LCD display
- RS51 and RS52 offers min/max readings as well as °C or °F
- The RS53II and RS55II further offers a 16,000 reading datalogger, as well as support for J & K Type thermocouples
- 2x channel input models RS52 and RS55II also offer differential measurement
- Single Type K bead thermocouple supplied for each input



123-3215 RS51 K Type 1 input
 123-3216 RS52 K Type 2 inputs
 123-3217 RS53II J or K Type 1 input, datalogger
 123-3218 RS55II J or K Type 2 input, datalogger

RS 135 Multi Function Calibrator

- Source 4~20 mA, 0~24 mA with 1 µA resolution (1 KΩ load, 24 V loop supply), basic accuracy 0.025%
- Source 0~24.000 V with 1 mV resolution
- Source frequency 1~20000 Hz square wave with programmable duty cycle (1~99%)
- Auto step and auto ramp for sourcing mA, V



174-9557 4-20MA Loop Calibrator & Thermometer

Hot-Wire Anemometer with Bluetooth

- Compact and robust design that offers accurate and reliable results and can be used across a variety of applications, making it an easy to use hand-held multi-purpose measuring instrument with user-friendly, easy to use control keys
- Ideal for measuring wind speed, airflow volume, temperature and humidity in a wide range of environments



220-7279 Hotwire

Network Tester

- Can test multiple cables such as: UTP, STP, Cat5E, Cat6, Cat6A and Coaxial cables
- Included toner probe helps with testing
- Locate and identify the distance of an open or short circuit No power supply needed. Just a 9V battery. Low battery indicator included



146-6833 F, RJ12, RJ45, 2670

MT-6600 Multifunction Tester

- Test a variety of installation parameters
- 3.5 in TFT colour LCD display with 320 x 240 pixe
- Fast high current loop test
- Variable RCD current mode for customized settings
- PASS/FAIL indication for RCD tests
- Safe Earth Volt Touchpad detects raised earth voltages greater than 50 V, indicating potential dangerous situations



144-5338 1000V

Magnetic Field Indicator / Solenoid Tester

- Easy to use
- Powerful red light indicator
- Lightweight



375-5422 Magnetic Stick Field Indicator

Acoustic Imagers

- 7 inch 1280 x 800 LCD with capacitive touchscreen
- Blended live SoundMap™ with visual image
- Lower utility costs, reduce leak detection time and improve reliability in your production line
- Do more with the same air compressors - delay the capital expense of purchasing an additional compressor



187-6163 2kHz to 50kHz, 0.5m to > 70m ii900
 187-6163 2kHz to 100kHz, 0.5 m to 120 m ii910

Fluke 117 Handheld Digital Multimeter

- VoltAlert Technology for integrated non-contact voltage detection
- AutoVolt feature for automatic AC/DC voltage selection
- LoZ: Low input impedance to eliminate stray voltage
- Large white LED backlight



616-1460 10A ac 600V ac FLUKE 117 EUR

Insulation Resistance Testers

- Designed for fast-measurement, faster & stable resistance reading with higher efficiency
- It has automatic calculation of polarization index and dielectric absorption ratio
- Its low power design meets the requirements of high-intensity work up to 1300 times of 2500 V measurement, and up to 6500 times of 250 V measurements



241-3116 FLUKE-1537/APAC
 241-3115 FLUKE-1535/APAC

1770 Series Three-Phase Power Quality Analysers

- Automatically measure power and power quality parameters
- At-a-glance power quality health for faster troubleshooting
- Easily view V/A/Hz, power, dips, swells, and harmonics data
- Capture high-speed transients up to 8 kV



232-0535 FLUKE-1777
 232-0533 FLUKE-1775
 232-0531 FLUKE-1773

Fluke 179 Electronics Multimeter Kit

- Comprehensive kit includes Fluke 179 DMM, 80BK-A integrated DMM temperature probe, AC280 SureGrip™ hook clips, TL910 electronic test probes, TL224 SureGrip™ insulated test leads, TPAK ToolPak™ magnetic meter hanger and soft carry case



132-176 Electrical, Thermostat FLUKE 179/EDA2
 2552634688 With RS Calibration

Fluke Ti480 PRO Thermal Imaging Camera

- 640 x 480 infrared resolution
- Increased sensitivity to visualise temperature differences
- More intuitive visual interface, improved, user-tested, touch screen interface
- Get 4x the pixel data with SuperResolution, which captures multiple images and combines them to create a 1280 x 960 image



171-6857 640x480 Resolution FLK-Ti480 PRO 9HZ

Fluke 810 Vibration Meter

- On-board identification and location of most common vibration mechanical faults reducing downtime.
- Fault severity scale with four severity levels helps you prioritise maintenance work
- Repair recommendations advise technicians on corrective action
- On-board context-sensitive help provides real-time tips and guidance to new users



744-2192 FLUKE 810



CLEANING & MAINTENANCE

Preserve the cleanliness of your machines, equipment, and facility..

Regular maintenance and cleanliness are essential in any workplace. In the manufacturing industry, they are even more so. Below are some essentials to keep your work space & equipment to the highest of hygiene standards.



Nitrile Disposable Gloves

- Powder free, made from a unique blend of vinyl and nitrile making them stronger than standard vinyl gloves.
- They are disposable yet strong, durable and with excellent grip.
- Does not contain DOP/DEHP phthalates
- Latex free, ideal for latex allergy sufferers
- Ambidextrous design, powder free and for single use, non sterile



235-2889	Small (Box of 100)	41079
235-2890	Medium (Box of 100)	41080
235-2891	Large (Box of 100)	41081
235-2893	XL (Box of 100)	41082

Kleenex® foam hand sanitiser

- Fragrance and dye free formulation kills up to 99.999% of germs.
- Dermatologically tested formula contains aloe vera and skin humectant.
- "Fit for purpose" in food handling or processing areas.



237-7017	1l cartridge. 6 per case	6492
226-4198	Aquarius White skincare dispenser	69480

Ultra Hygiene Table Squeegee

- Table squeegee made of polypropylene/ rubber with mini handle
- With a soft and flexible blade which is easy to keep completely clean
- Ideal for removing excess water and food debris from food preparation surfaces



884-7703	Red	71254
884-7709	Blue	71253

Hygiene Bucket

- Hand brush with soft bristles is ideal for sweeping fine particles such as flour from conveyor belts, food preparation surfaces, tables and equipment



884-7642	GREEN	56862
188-9754	GREY	568688
188-9752	LIME	568677
884-7652	YELLOW	56866

Medium Floor Broom

- 50 x 400mm, 56mm bristle length
- Polyester stock and bristle
- Application: sweeping medium sized particles/dust



390-4927	GREEN	
390-4961	YELLOW	
390-4933	BLUE	

Touch-free electronic skincare dispenser

- Most hygienic soap dispensing option
- Reliable, controlled dispensing
- Indicator lights for low product and low battery
- Suitable for facilities where hygiene is at the utmost importance
- Compatible with Kleenex® 6493, 34614, 91591



202-7480	White ABS plastic	92147
202-7482	Metallic ABS plastic	11329



BRUTE Bins

- Features innovative solutions for making refuse collection and storage more efficient.
- Innovative venting channels make lifting out liners up to 50% easier, improving productivity and reducing the risk of injury.
- Proprietary design constructed with the highest quality material plus a UV inhibitor ensures long life in even the most extreme commercial environments



230-8231	121.1L	FG263200GRAY
146-2786	167L	FG264360GRAY

Heavy Duty Plastic Bin Bags

- From RS PRO, comes a range of high-quality bin bags. Manufactured to industry standards these plastic disposal bags have been designed for an array waste disposal solution
- High tensile strength 40 mu Tri-ex blend film



771-6572	50 x Black Bin Bag, 80 x 90L
771-6569	50 x Yellow Bin Bag, 110L
771-6563	50 x Black Bin Bag, 90L

Complete Cleaning Kits

- Ideal solution for all cleaning applications within a wide range of environments.
- The cleaning kit offers a one-stop bundle that has a mop and bucket set, as well as a dustpan and brush for general purpose cleaning within domestic, commercial and industrial areas



201-3598	Yellow
201-3599	Blue
201-3596	Red
201-3594	Green

Slim Jim® Step-On Container

- Features a slim profile and small footprint to fit in tightest spaces.
- Constructed with premium-quality materials and meet the needs of any environment with efficiency,
- Quiet and controlled lid-closure minimizes noise to enhance guest and patient satisfaction



202-4003	50L, Yellow	1883575
202-3999	50L, White	1883557
202-4001	90L, White	1883561
202-4004	90L, Black	1883615

Mobile Janitorial Cart

- Preassembled locking security hood speeds up assembly and ensures all products will be secure
- Secure cabinet doors keep cleaning supplies concealed from view and locked up when carts are unattended



241-1757	129L, 3 Shelf	1861427
615-7247	230 V ac, Amber	E2XB05AC230B1R1B/A

Heavy-Duty Platform Truck

- Ideal for moving large, heavy, oversized loads efficiently throughout a facility with up to 1000 lb. capacity
- Features a precision-engineered Duramold™ Deck constructed of resin and metal composite
- Designed with 2 fixed casters and 2 swivel casters for improved maneuverability



241-1795	FG440300BLA
-----------------	-------------

Rubbermaid Heavy Duty Adaptable Cart

Being able to easily organize items and use the cart as a work station helps workers prepare for and complete the job. The Heavy Duty Adaptable Cart from Rubbermaid Commercial Products provides superior versatility for tackling whatever task is at hand. It reduces the need for time-consuming user modifications, with a variety of integrated features that make the job easier.

Search 'Rubbermaid Heavy Duty Cart' at RS Online





NF Contact Cleaner

- NF Contact Cleaner is a revolutionary, technically proven, stable, no flash point, and non-flammable, inert high purity cleaning solvent
- NF Contact Cleaner is non-conductive, non-corrosive and non-staining
- It has rapid- complete evaporation and contains no lubricants



238-7738 400 g 2017

CO Contact Cleaner

- CO Contact Cleaner is a unique, plastic safe, scientifically formulated, technically proven, stable, inert high purity cleaning solvent
- It is non-corrosive, non-staining, rapid-complete evaporation and contains no lubricants
- Contains COZOL a special proprietary blend of solvents which enhances the cleaning power without damaging plastics



238-7736 150 g 2015
238-7737 350 g 2016

Penetr8

- Penetr8 is an industrial strength, low viscosity lubricant and penetrant designed to quickly loosen and free seized, bound or frozen fasteners
- It quickly permeates rust, scale, gum, grease and corrosion with a low surface tension formula that creeps into cracks, seams, threads and joints with great efficiency



238-7833 400g 2019

Electrical Parts Cleaner

- Electrical Parts Cleaner is a unique, scientifically formulated cleaner/ degreaser which contains no trichloroethylene
- It is effective in most heavy-duty cleaning applications



238-7740 400g 2019

Food Grade Bio Degreaser

- Food Grade Bio Degreaser is an extra heavy duty cleaner formulated to penetrate and dissolve tough grease, oil and contaminants for easy removal - safely
- Offers next-generation high performance cleaning technology that is pH neutral, safe on surfaces, users and the environment



238-7871 750ml FG05167

Brakleen

- Brakleen is formulated to quickly and safely remove brake fluid, grease, oil and other contaminants from brake linings, pads, drums and callipers
- Selected solvents, controlled evaporation, low surface tension and high density ensure superior cleaning and degreasing properties and can even lift and remove oil and grease that has already penetrated linings



238-7825 500 g 5089

5.56 Multi-purpose

- 5.56 is a multi-purpose product with superior penetrating power that breaks through rust and corrosion while it clears away scale and dirt
- Lubricates for smooth action, and silences annoying squeaks and squeals



238-7805 400g 5005
238-7806 4L 5006
238-7803 1L 5004

Air Duster

- Inert, pure compressed gas for dust removal
- Ideal for removing particulates from inaccessible areas on delicate equipment



168-1644 400ml
168-1642 300ml

Silicone Grease

- Silicone grease is a water repellent, non-melting silicone grease lubricant;
- Commonly used to lubricate plastic and polythene water pipes, rubber washers and other fluid pipework during assembly;
- Working temperature range is between -50°C to 200°C.



494-124 100g Tube

Zinc Range

- High-quality range of zinc aerosol products including Zinc It, Bright Zinc and "Black" coloured zinc products
- CRC Zinc products can be used on structural steel, roofs, welding seams, storage tank transformers, power generation equipment and much more



238-7749 Grey, 400ml 2085
238-7750 Silver, 400ml 2087
238-7751 Black, 400ml 2089
238-7752 White, 400ml 2090



Dry Multi-Purpose Wipes

- Highly absorbent with low lint.
- Exceptional strength and solvent resistant
- Size of 35cm x 30cm



235-2847 Carton of 300 40510

Alcohol Antibacterial Wipe

- Alcohol Antibacterial Wipe with commercial grade disinfectant
- Fast and hygienic way to disinfect surfaces from bacteria
- Dimension 14cm x 21cm



226-4116 70 Wipes per Canister (Box of 12) 4100

KWIKMASTER Industrial Wipes

- Hydro absorption - Superior water and oil absorbency
- High strength, performance and abrasion resistance
- Multi-purpose
- Convenient dispensing pop up box
- Rinse and reusable
- Cost effective, disposable wiping solution



241-8614 Roll of 540 KM80WIPERWW0540

Scott® Essential Jumbo Roll Toilet Tissue

- One roll measures 300m, one case contains 8 rolls
- The high capacity dispensing system of Scott® Essential™ jumbo toilet tissues reduces maintenance during peak times
- 2-ply toilet rolls deliver superior softness, absorbency and comfort for users
- Improved efficiency as less time spent servicing and refilling
- FSC



226-4115 2ply, 8 rolls x 300m 38004

Aquarius 70210 Jumbo Roll Twin Dispenser

- Ideal for: dispensing rolled toilet tissue in an elegant format for high-traffic areas; easy loading, it offers a smart, hygienic and cost effective solution when you need it most
- Quick-fill dispenser in a sleek and contemporary design, with a white, high-gloss, easy-clean finish and no dirt or dust traps, a window (so you can see when a refill is needed)
- Suitable for Kleenex® 5749, 4782, & Scott® 5748, 4781, & Scott® Essential™ 38004



226-4211 White, 52.6cm x 13.8cm x 30cm 70210

Facial Tissues

- Great value without compromising on quality, absorbency and softness. Each box of scott facial tissues contains a starter sheet and finger tab to provide ease of opening and a lint guard to protect the tissue
- One pack of Scott facial tissues contains 100 tissues, one case contains 48 packs
- Each box features a starter sheet and finger tab for easy opening
- Tissues are protected by a lint guard
- These great value, 2-ply facial tissues do not compromise on quality



226-4153 100 tissues, 48 packs per case 4725

WYPALL* X60 Wipers

- Strong wiper construction ensures longer lasting wiper performance, maintaining strength wet or dry
- A versatile wiper that is durable enough to handle general cleaning tasks and strong enough to scrub off adhesives, remove oil and debris
- Versatile dispensing systems include pop-up box dispensing, ideal for cleaning or wiping on the move and single sheet dispensing ensuring that individual wipers are dispensed, helping create an efficient workplace



226-4273 Pop-up Poly Wipers, White, 115 wipers/bag, 12 bags/case, 23cm x 42.5cm 94333
226-4269 Pop-up Wipers, White, 130 wipers/box 10 boxes/case, 23cm x 42.5cm 94222
226-4270 Small Roll Wipers, Blue, 80 wipers/roll, 6 rolls/case, 24.5cm x 42cm 94223
226-4271 Single Sheet Wipers, White, 100 wipers/pack, 8 packs/case, 28cm x 35cm 94224

WYPALL X70 Wiping Cloths

- High performance, fast absorbing wiping cloths.
- They are strong and bulky, making them ideal for tough jobs
- Can be used for
- Personal wiping
- Wiping surfaces
- Absorbing liquid spills
- Absorbing oil and grease
- Polishing glass, stainless steel and other metal single sheet wiper, with white colour



226-4260 35cm x 42cm wipes, 300 per pack 94171
226-4262 31.5cm x 42.5cm, 160 per pack 94174
226-4264 220 wipes per roll, Box of 4 rolls 94178



PPE & WORKWEAR

Choose the Right PPE.

Selecting the right PPE means fit, comfort and productivity aren't compromised. From gloves to safety boots and face masks to safety glasses, we can help.



Nitrile Orange PF Disposable Gloves

- Powder free Nitrile Disposable gloves, non-medical grade, non-sterile, single use.
- On-line Chlorinated for easy put on and take off with textured finger tips for good grip.
- Ambidextrous with beaded cuff.



235-2911	Small	41135
235-2912	Medium	41136
235-2913	Large	41137
235-2914	XL	41138
235-2916	XXL	41139

RS PRO Black Back Support Belt

- Durable and lightweight
- Manufactured from nylon
- Hook and loop fastenings for easy adjustment



015-4857 34 - 38in

Height safety kit

- 25mm x 2m webbing sling provides universal connection rated at 22kN
- Shock absorber and shock absorbing lanyard
- Sizable backpack ruggedly constructed provides ample space for the kit



241-5558 ZRK903H

TROJAN PVC Gloves

- Made out of premium polyvinyl chloride (PVC)
- Extremely flexible with seamless cotton liner
- Resistance against many acids, oils and chemicals



235-2955	9 (Bag of 12 Pairs)	41560
235-2956	10 (Bag of 12 Pairs)	41561
235-2957	Size 11 (Bag of 12 Pairs)	41562

RS PRO Navy Standard Peak Bump Cap

- Visibility in daylight attributed to the Hi-Visibility colour
- Cooling mesh fabric for increased breathability



171-6850 BS Protective Material

Yellow Hi Vis Jacket

- Made from 100% Polyester, making it highly durable & suitable for indoor and outdoor applications
- Two-way zip fastening making the vest quick & easy to open and close
- Fluorescent colour & flame resistant reflective tape allows for 360° visibility in any light condition & any environment
- Available in a variety of sizes



184-5961	S
184-5962	M
184-5963	L
184-5964	XL
184-5965	XXL
184-5966	XXXL



HyFlex® 11-561

- The INTERCEPT yarn provides high cut protection while providing dexterity and comfort
- The palm coating design improves grip, extends glove life in abrasive conditions and allows the hand to breathe
- The glove is silicone free which prevents the transfer of silicone contaminants to metal parts prior to painting
- The Oeko-Tex certification guarantees that the glove does not contain any harmful substances such as DMF and other chemicals



234-8222	Size 5 (Bag of 12)	11561050
234-8223	Size 6 (Bag of 12)	11561060
234-8224	Size 7 (Bag of 12)	11561070
234-8225	Size 8 (Bag of 12)	11561080
234-8226	Size 9 (Bag of 12)	11561090
234-8227	Size 10 (Bag of 12)	11561100

HyFlex® 11-518 Blue Polyurethane Coated Cut Resistant Gloves

- Ultralight duty seamless liner
- Enhanced flexibility (range of motion) and tactility (fingertip sensitivity)
- Dyneema® Diamond Technology fiber
- Very high cut-to-dexterity ratio for safety with comfort EN cut level 3 (ANSI cut level 2)
- Thin PU Coating
- High dexterity with high abrasion resistance (EN level 3, ANSI level 3)



217-4899	Size 6	11518060
217-4900	Size 7	11518070
217-4902	Size 8	11518080
217-4903	Size 9	11518090
217-4904	Size 10	11518100
217-4905	Size 11	11518110

Ringers Super Hero Yellow Work Gloves

- Knuckle TPR design with two detached fingers for flexibility
- Durable synthetic leather palm for enhanced grip
- Split-fit padded palm for comfort
- Reinforced thumb, index, and middle finger tips for durability
- Secure cuff closure with hook and loop TPR pull tab
- Wrap around index finger protecting wear and tear zone



223-3777	Size 8	161-08
223-3778	Size 9	161-09
223-3780	Size 10	161-10
223-3781	Size 11	161-11
223-3782	Size 12	161-12
223-3783	Size 13	161-13

EDGE® 48-701 Black Polyurethane Coated Work Gloves

- Good dexterity and flexibility.
- High cut protection and abrasion level.
- Good grip in dry environments.
- Palm dipping for good protection against oil compared to a knitted or cut and sew glove.



217-4987	Size 6	48701060
217-4988	Size 7	48701070
217-4990	Size 8	48701080
217-4991	Size 9	48701090
217-4992	Size 10	48701100
217-4993	Size 11	48701110

OPTIMIZE SAFETY, PRODUCTIVITY AND COSTS WITH ANSELL GUARDIAN.

Ansell Guardian® is our proprietary service to help companies select the right Personal Protection Equipment solutions to improve their safety, productivity and cost performance.

Since July 2014, our recommendations have resulted in injury reductions on an average of 65%, customers have decreased product styles by an average of 25% and we have helped companies achieve a total of \$149M* in documented cost savings and operational expense reductions.



Ansell GUARDIAN®



Inherent Flame Resistant Coveralls

- HiVis day/night fabric design
- Sun protection, cool-breeze airflow vents
- Carbon grid anti-st
- 230gsm ripstop weave 61% modacrylic, 30% cotton, 5% para-aramid, 3% A100 tencel, 1% anti-static inherent FR fabric



238-2896	Yellow/Navy 102R	3481
238-2898	Yellow/Navy 107R	3481
238-2906	Yellow/Navy 77R	3481
238-2908	Yellow/Navy 87R	3481
238-2909	Yellow/Navy 92R	3481
238-2911	Yellow/Navy 97R	3481

3858 Hivis Protector Drill Jacket

- 311 gsm heavyweight 100% cotton drill out shell with cotton lining
- 3M reflective tape throughout the Hi-Vis range
- Heavy duty nylon zipper, velcro closure sleeve



238-3104	Yellow/Navy XXS	3858
238-3103	Yellow/Navy XS	3858
238-3102	Yellow/Navy XL	3858
238-3101	Yellow/Navy S	3858
238-3100	Yellow/Navy M	3858
238-3099	Yellow/Navy L	3858
238-3093	Yellow/Navy 2XL	3858
238-3094	Yellow/Navy 3XL	3858
238-3095	Yellow/Navy 4XL	3858
238-3096	Yellow/Navy 5XL	3858
238-3097	Yellow/Navy 6XL	3858
238-3092	Orange/Navy XXS	3858
238-3091	Orange/Navy XS	3858
238-3090	Orange/Navy XL	3858
238-3089	Orange/Navy S	3858
238-3088	Orange/Navy M	3858
238-3087	Orange/Navy L	3858
238-3081	Orange/Navy 2XL	3858
238-3083	Orange/Navy 3XL	3858
238-3084	Orange/Navy 4XL	3858
238-3085	Orange/Navy 5XL	3858
238-3086	Orange/Navy 6XL	3858

Hi-Vis Warsaw Executive Vest Waistcoat

- Warsaw executive vest waistcoat
- High visibility
- Reflective tape marking - increased visibility
- Contrast panels for dirt protection



141-8177	ORANGE S	
141-8178	ORANGE M	
141-8179	ORANGE L	
141-8183	ORANGE XL	
141-8292	ORANGE XXL	
141-8168	YELLOW S	
141-8169	YELLOW M	
1418170	YELLOW L	
141-8174	YELLOW XL	
141-8176	YELLOW XXL	

Inherent Flame Resistant Work Shirt with Airflow Vents

- 3455 Inherent FR Modacrylic Work Shirt
- Flame resistant
- Carbon grid anti static
- HiVis day/night
- Ultraviolet resistant
- Cool breeze airflow vents



238-2826	Yellow/Navy S	3455
238-2818	Yellow/Navy 2XL	3455
238-2819	Yellow/Navy 3XL	3455

FLAMEARC HRC2 Tape Cargo Style Pants

- Cargo style pants
- 2 front sides pockets, 2 large side flap cargo pockets & 2 back flap pocket



238-2854	Navy 112R	3474
238-2860	Navy 72R	3474
238-2861	Navy 77R	3474
238-2862	Navy 82R	3474
238-2863	Navy 87R	3474
238-2865	Navy 92R	3474
238-2867	Navy 97R	3474



Fahrenheit™ Goggles

- Soft PVC frame and clear poly hard coat lens
- Specially designed to fit with prescription glasses, dust mask or respiratory half-mask
- Aerodynamic shape with cylindrical lens for 180° of distortion-free vision
- Indirect ventilation system prevents fogging and guards against liquids and dust



774-3937	Anti-mist, Clear lens	40173-0000
----------	-----------------------	------------

6200 Half Respirator Mask

- Face Piece is made from soft, lightweight material
- Cradle head harness and easy to fasten neck strap
- Dual filter design and Airline system available
- Bayonet style fitting cartridges and filters



773-4457	Medium	6200
----------	--------	------

Particulate Respirators 8000 Series

- Provide effective respiratory protection for use in industries where workers will be exposed to dust particles and/or nonvolatile liquid particles.



774-3880	P1 Unvalved	8710
774-3886	P1 Valved	8812
774-3899	P2 Unvalved	8210



E-A-Rsoft™ Yellow Neons™ Earplugs

- Smooth texture for in-ear comfort, are made of an advanced foam for all-day wear and are available in two sizes. Brightly colored for hearing protection compliance sighting, these earplugs are an excellent choice for any hearing conservation program
- Available with Cord
- Slow-Recovery Foam
- NRR 33 dB*



774-3959	Regular Earplug Uncorded	312-1250
774-3962	Large Earplug Corded	311-1251

E-A-R™ Express™ Pod Earplugs

- The unique pod design of Express earplugs allows the foam to compress easily so the earplug slides gently into the ear and expands slowly, making an effective seal for most earcanals.
- Available with Cord
- Slow-Recovery Foam
- No Roll-Down Required
- 19 dB (Class 3)



774-3984	Assorted Corded, Pillow Pack	321-2115
----------	------------------------------	----------

3M™ No-Touch™ Foam Earplugs

- Soft, purple No-Touch™ foam earplugs create a hygienic, noise-reducing seal in the ear with soft foam, a smooth tapered shape and paddle stems. Push-to-fit design makes inserting hearing protection easy, with no roll-down required. Available with or without cord.
- Available with Cord
- Slow-Recovery Foam
- No Roll-Down Required
- NRR 29 dB*



774-3975	29 dB	P2001
----------	-------	-------

3M PELTOR H10 Ear Defender with Headband

- Double casing minimises resonance and provides maximum low-frequency attenuation
- Stainless steel headband wires with four point suspension help distribute cushion pressure evenly
- Generous inside depth helps the ears to rest comfortably



774-4022	33dB	H10A
----------	------	------

E-A-Rflex™ Banded Earplugs

- A comfortable, effective, lightweight alternative to earmuffs
- Ideal for people who fit and remove their hearing protection frequently. Soft tips pivot to help maintain a comfortable, noise-blocking seal. Multi-position wearing with conical tips. Multi-pivot tips and flexible band
- A versatile earplug alternative with multi-position wearing
- Easy to use tapered pods allow for easy hygienic insertion
- 15dB



774-3993	6 pairs per package	350-3001
----------	---------------------	----------

3M White Disposable Coverall

- Splash and Dust Protection Coverall 4510
- Elasticated waist, ankles, and wrists for convenience and freedom of movement
- 2-way zipper with storm flap for convenience and additional protection



773-4466		4510 XL
----------	--	---------

3 x-flow Unisex Toe Capped Safety Shoes

- The full leather upper and heat resistant sole makes uvex 3 x-flow ideal for workers in heavy application areas that may be exposed to hot material
- Electrical insulating sole and metal free design make it well suited to workers in construction and other industries that could have accidental contact with electricity



uvex

237-4455	AU Size 5	6540838
237-4456	AU Size 6	6540839
237-4447	AU Size 7	6540041
237-4459	AU Size 8	6540842
237-4461	AU Size 9	6540843
237-4462	AU Size 10	6540844

Blundstone 992

- Loaded with safety and comfort features - and the inclusion of XRD® Technology means it is the ultimate in workboot comfort
- Wheat water resistant nubuck, 150mm height, safety boot



204-3553	AU Size 5	992050
204-3555	AU Size 6	992060
204-3556	AU Size 7	992070
204-3557	AU Size 7.5	992075
204-3558	AU Size 8	992080
204-3559	AU Size 8.5	992085
204-3561	AU Size 9	992090
204-3562	AU Size 9.5	992095
204-3547	AU Size 10	992100
204-3549	AU Size 10.5	992105
204-3550	AU Size 11	992110
204-3551	AU Size 12	992120
204-3552	AU Size 13	992130
204-3563	AU Size 14	992140

Torque Range Safety Boots

- The easy access ZIP closure of the FORCE ZIP makes it ideal for workers exposed to sparks, working around water or required to remove their boots multiple times a day
- The ScuffCAP improves durability to ensure that the boots comply with standards for as long as possible



241-8632	UK 6, EU 40	MK0FORCEZHFF060
241-8634	UK 7, EU 41	MK0FORCEZHFF070
241-8640	UK 10, EU 44	MK0FORCEZHFF010

Boot Covers

- Designed in a generous size making them easy to put on, with ankle ties for a secure fit.
- Provide a barrier between footwear and the environment.
- Keeping floors clean from contamination, no need to remove street footwear.
- Generous size, easy to put on
- Plastic ties for ankle, elastic at top
- Double layered on sole
- Waterproof
- One size fits all



235-2980	Box of 250	50506
-----------------	------------	-------

Stimela 'Superintendent' Black Gumboot with Safety Toe & Midsole

- Top quality PVC/nitrile blend sole for comfort & durability
- Ultra high grade virgin PVC upper
- Steel Toe AND Steel Midsole for added safety
- Reinforced shin area to protect against knocks and bumps and painful ankle roll-overs
- Resistant to oils, grease, acids, fats and animal by-products



241-5316	Size 6	FWG906-6
241-5307	Size 7	FWG903-7
241-5318	Size 8	FWG906-8
241-5320	Size 9	FWG906-9

Uvex 9192 Anti-Mist UV Safety Glasses

- Excellent peripheral vision with optical class 1
- Lightweight design with ergonomic features
- Arms with advanced ventilation system



uvex

768-9057	Grey Polycarbonate Lens	9192-300
768-9079	Clear Polycarbonate Lens	9192-310
768-9076	Brown Polycarbonate Lens	9192-307
768-9067	Amber Polycarbonate Lens	9192-306

Rig-Lizard Thin Lizzie safety glove

- Purpose-built to provide maximum grip in tough situations with over five grip options for water, oils, muds, and lubricants
- Each glove is launderable and also equipped with our highly flexible, keeping hands protected from smash and pinch injuries.
- Sandy nitrile palm coating provides superior grip and abrasion resistance



uvex

237-4391	Size 7	2090X07
237-4392	Size 8	2090X08
237-4393	Size 9	2090X09
237-4394	Size 10	2090X10

Disposable Ear Plugs

- Disposable earplugs with a compact, ergonomic design
- Corded and uncorded styles available



uvex

232-3022	Yellow, Corded, 26dB (Pack of 100 pairs)	XF-CD
232-3023	Yellow, Uncorded, 26dB (Pack of 200 pairs)	XF-UC
768-9152	Yellow, Uncorded, 26dB (Pack of 200 pairs)	XF-PB
232-3019	Orange, Corded, 22dB (Pack of 100 pairs)	CF-CD
232-3021	Orange, Uncorded, 22dB (Pack of 200 pairs)	CF-UC
232-3020	Orange, Uncorded, 22dB (Pack of 200 pairs with dispenser)	CF-PB

Uvex Safety Goggles Ultravision 9301

- Full vision safety goggle with unrestricted side visibility provided by 180° panorama lens
- Fits over most prescription spectacles
- Anatomical shape and soft material allow close, yet comfortable, fit



uvex

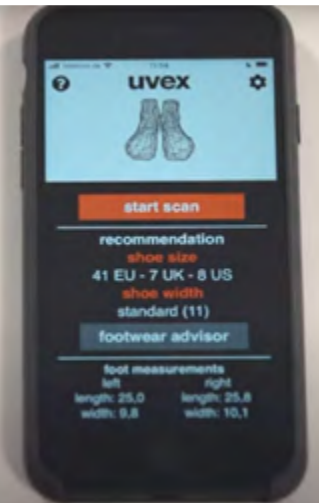
262-6610	9301-624
262-6604	9301-614

uvex in your pocket: Fit Advisor & Decibel Apps

With our mobile apps for your iPhone or iPad, you've got essential information at your fingertips about hearing protection, prescription safety spectacles and other topics relating to workplace safety.

uvex Decibel app for iPhone: With the uvex Decibel app, you can find the right hearing protection anywhere and at any time. Simply measure the volume to get the right earmuff or earplug recommendation for your current situation.

uvex fit advisor for iPhone & Android: It's common knowledge that people take a different shoe size in different brands. The matching shoe can vary even by several sizes. Since wearing the right size is crucial when it comes to how well safety shoes protect your feet, we recommend that you use the uvex fit advisor app to determine your personal uvex shoe size.



HAND & POWER TOOLS

Hand Tools & Power Tools for Manufacturing.

As a leading tools supplier, we offer quality products, tools and accessories to get the job done alongside our unrivalled service. Our range is supplied from leading tool brands such as Dewalt, Makita, Bosch, Stanley, Wera, Bahco, RS PRO and many more.



Electricians Tool Kit

- This versatile tool kit has VDE certified screwdrivers and pliers, individually tested for use up to 1000 V ac
- The kit also contains additional extras including sockets, spanners, bit sets, extension bars, hex keys, insulated screwdrivers and VDE pliers in various sizes ensuring that you are covered for a range of applications



734-8885 88 Piece

Insulated Crimp Kit with Tool

- Handy crimp terminal kit containing 800 high-quality colour coded insulated terminals in a range of popular sizes along with a compact crimp tool
- Contains crimps for use with wire size range of 0.5-6mm²
- For full contents visit our website



613-9952

Carbon Steel Insulated Plier Set

- Digitally controlled heat gun with safety heat indicator and four memory programmes
- One-hand operation with soft grip handle and 3m power cord
- Maximum temperature 650°C and airflow of 500L/min
- Ideal for shrinking heat shrink tubing, film or packaging; stripping paint; drying out wood; softening adhesives or thawing frozen pipes



suttontools

204-3825 2 Piece

PG-2

Zyklop Socket and Ratchet Set

- Delivers top quality performance and contains the most popular sockets, a selection of bits and extensions plus a 3/8" ratchet
- Chrome Vanadium sockets are suitable for manual and non-impact machine use



812-6270 29 Piece

004046

18V Cordless Impact Driver

- Die-cast aluminium for reduced weight and maximum durability
- Square drive anvil with hog-ring for quick and easy socket change
- LED work light
- Anti-Marring bumper protects tool and work surface from damage
- Glass filled nylon body to withstand automotive fluids
- One hand forward and reverse lever



878-3154 18V

SCMT90000

Insulated Ergo™ 1000V Live Working Screwdriver set

- Conforms to IEC 60900, DIN EN 60900, VDE 0680 part 2
- All products are manufacture date marked
- Vanadium steel blades, hardened and chrome plated
- Tips are black oxide finished for high accuracy
- 3-part rounded ergonomic handle (with hanging hole) prevents pressure points and ensures optimum torque
- Colour coded handles for easy identification and selection of screwdriver within the set



288-8004 5 Piece

BE-98815

Straight Flute Tap Taper

- Made from HSS.
- General purpose use
- Suitable for materials up to 1000N/mm²
- Suitable for both hand and machine operations

suttontools



204-3853	M6, 66mm	T3840600
204-3854	M8, 72mm	T3840800
204-3855	M10, 80mm	T3841000
204-3849	M6, 66mm	T3860600

Heavy Duty Cobalt Jobber Drill Set

- Industrial quality for drilling materials that have high hardness and tensile strength such as cast iron, bronze, hardened steel & stainless steel.
- 135° split point (drills > 2mm & 3/32) enables accurate positioning and less drilling pressure
- Thick core for increased rigidity in hard materials



suttontools

204-3775	Imperial, 29 pieces, 1/16 to 1/2 x 1/32 rises	D109S3
204-3776	Metric, 25 pieces, 1.0 to 13.0mm x 0.5mm rises	D109SM3

Heavy Duty Cobalt Jobber Drill

- An industrial quality for drilling materials that have high hardness and tensile strength such as cast iron, bronze, hardened steel & stainless steel.
- 135° split point (drills > 2mm & 3/32) enables accurate positioning and less drilling pressure
- Thick core for increased rigidity in hard materials
- Precision engineered parallel shank for accurate hole size



suttontools

204-3862	7.0MM	D1080700
204-3864	8.5MM	D1080850
204-3847	10.0M	D1081000
204-3848	13.0M	D1081300

Tool Cabinet

- Professional tool storage cabinet that offers a robust and secure solution to keep your workspace organised.
- The lockable swivel wheels make it easier to get the tools where you need them and maintain your safety.



GEARWRENCH

816-0295 7 Drawers, 680 x 457 x 991mm 83155

Soldering Station

- High power temperature controlled analogue soldering station in a slim, space-saving design
- New Lead free ESD safe soldering iron
- Composite design tip ensures temperature accuracy and excellent thermal recovery
- Temperature range from 200 to 450°C



HAKKO

517-5783	Digital, 75W, 230V	FX951
389-637	Analogue, 75W, 24V	FX-950

Portasol® Professional Self-igniting Cordless Butane Solder Iron

- A lightweight, compact cordless butane soldering and hot air tool
- ESD safe to protect sensitive components
- Piezo ignition with push-button ease & convenience
- Fast heat-up for high productivity, melts solder in less than 40 seconds



Weller

162-4465	Complete kit contains: PSI100C iron with PSI1 tip, PSI3 tip, PSI100K PSI9 tip, PSI10 tip, Sponge, Case
-----------------	--

Backpack with Shoulder Strap

- Made from heavy-duty 600 x 600 denier fabric for long-lasting and extra durability
- 50 Pockets/tool holders for a wide variety of tools, including longer tools on the side such a level
- Removable dividers system with tool holders is easily



STANLEY

706-4711 360mm x 270mm x 460mm 1-95-611

One-Touch Tool Boxes

- Stackable tool box with one hand latch opening and self-closing
- 2 storage compartments on the cover and removable tray which allows more tools to be stored underneath
- Padlockable clasp (padlock not supplied)
- Folding handle for easier handling



FACOM

123-4649	391 x 164 x 222mm	B.P.C.16NPB
123-4650	481 x 237 x 271mm	B.P.C.19NPB
123-4651	603 x 260 x 273mm	B.P.C.24NPB

Screwdriver Set

- Includes flat (slotted), PH and PZ type screwdrivers
- TT-MV PLUS steel alloy for greater strength and material flexibility
- Ergonomically designed bi-material handle for easy use with higher torque and faster speed
- Hole in the handle for hanging or for use as a T handle for extra torque or with a fall protection wire if needed • The handle is moulded around the blade to ensure straightness and to allow larger blade wings which give a higher torque capacity



198-1852 11 Piece set

MD911N

Socket Set

- 18 piece 3/4" drive metric 6 point socket set
- Includes a Teng Tools 72 teeth quick release, twist reverse ratchet together with extension bars and adaptors
- Includes all the most commonly used sizes from 19 to 50mm
- Regular 6 point single hexagon sockets for a better grip
- Teng Tools hip grip design for contact with the flat side of the fastening for reduced damage and use on rounded nuts and bolts



198-2079 335x600x126mm

T3418-6

Mini Screwdriver Set

- Double ended mini screwdriver set
- It includes fully interchangeable double ended blades including flat (slotted), PH, PZ and TX blades. It has rotating end piece for easier use when "transporting" the fastening.
- Sizes clearly marked on the shaft
- Hexagon shaft
- Twist grip tightening function allows the blade to be set at different lengths, ideal for where access is restricted



198-1860 8 Pieces

TM708

Pry Bar Set

- Includes 3 roll/heel bars in three sizes to suit different applications
- Supplied in the unique Teng Tools drawer width TTX tray
- Use on it's own or as part of the Teng Tools "Get Organised" system



222-2994 12", 16", 20" pry bars

TTXPB3

Torque Wrench

- 3/4" drive torque wrench covering 65-450Nm
- Equipped with an in-built angular gauge for easier after tightening of stretch bolts (TTY torque to yield fasteners)
- Click type mechanism with easily recognisable signal when the required torque is reached
- Supplied in a handy storage case



222-2961

3492AG-E

Adjustable Wrench

- Integral measurement scale on the jaw to check fastening sizes
- Wider jaw opening increases the bolt sizes that can be worked on
- Moving jaw does not protrude allowing use in confined spaces
- Hole in the handle for tool securing when working at height



1981-685 18 inch

4007

1981-686 24 inch

4008

Punch and Chisel Set

- Parallel pin punches, flat cold chisels and centre punches
- High carbon steel hardened to HRC42 and tempered strike ends (HRC40 +/-5) for use with a hammer
- Automatic centre punch with spring loaded stroke also included for marking points quickly



222-2970 14 piece set

TEDPC14

Impact Driver Set

- Reversible action heavy duty impact driver for shifting stubborn fastenings
- 1/2" drive square drive for use with impact sockets and accessories
- Removable bit holder included for use with 5/16" hexagon drive impact bits
- Set includes 12 impact bits covering the most popular screw head sizes and types



198-1749 15 piece set

ID515

LXT Cordless Jigsaw

- Quick-release tool-less blade change
- Sturdy adjustable base for accurate cutting
- Variable speed control
- Soft start
- Built-in job light
- Orbital action
- Ultra-low vibration



812-9941 18V, Body Only

DJV180Z

385-455 3Ah Li-ion 18V Power Tool Battery, for use with Makita 18 V LXT Power Tools

BL1830B

LXT Cordless Angle Drill Driver

- Li-ion LXT battery system
- Rotation, hammering and combined modes of operation
- keyless chuck operation
- High comfort grips
- Support side handle
- LED job light with afterglow
- Large trigger



812-9922 18V, Body Only

DDA351Z

385-455 Battery 3Ah 18V

BL1830B

LXT Li-Ion Cordless Multi Cutter

- Compatible with Lithium-ion LXT series 18V batteries
- Easy to use, a thumb on/off switch
- Hex wrench holder on body
- Variable speed control with a dial
- Accessories can be installed at 30° increments across 360°



812-9954 18V

DTM50Z

385-455 Battery 3Ah 18V

BL1830B

LXT Circular Saw

- Adjustable circular saw, allowing for optimal visibility and accessibility when cutting in tight spaces
- Rigid Aluminium base providing high quality and toughness
- Smooth yet powerful motor for cutting various types of wood
- Maximum angled cut up 50 degrees to a depth of 36 mm



812-9938 18V, Body Only

DSS611Z

385-455 3Ah Li-ion 18V Power Tool Battery, for use with Makita 18 V LXT Power Tools

BL1830B

CXT Keyless Cordless Drill Driver

- Ergonomic soft grip
- 2-Speed variable & reverse
- Keyless chuck capacity: 0.8mm to 10mm
- All-Metal gearing
- Compact and lightweight
- Electronic brake



124-0006 18V, Body Only

DF332DZ

CXT Cordless Jigsaw

- Three orbital settings
- Straight efficient cutting
- Variable speed trigger for greater control
- Ergonomically designed handle provides comfort
- Blower function keeps sawdust from obscuring cut line



123-9997 12V, Body Only

JV101DZ

Cordless Impact Driver

- Cordless impact
- Brushless motor
- Aluminium gear housing
- LED job light
- Ergonomic soft grip
- Electric brake



812-9900 18V 1/4in, Body Only

DTD153Z

Cordless Die Grinder

- Powerful motor delivers 25,000 RPM to handle the most challenging applications
- Torque Limiter
- Small diameter circumference grip for added comfort
- Easily accessible carbon brush



812-9950 18V, Body Only

DGD800Z

Complete Drill & Bit Set

- An extremely comprehensive set that offers all the accessories you will ever need for making large holes, drilling and driving screws.
- This kit ensures all your fasteners and fittings will be presented with a professional finish every time.
- For full contents visit our website



458-1913 216 Pieces

P-44046

More Products, More Value

Our RS PRO range keeps growing to bring you even more choice in great value, quality products, available next day.



AUDITED

In compliance with industry standards

INSPECTED

By leading engineers



QUALITY

We rigorously test every part against demanding industry standards.

The RS PRO Seal of Approval
a Sure Sign of Quality



TESTED

For guaranteed quality and performance



VALUE

We price our products competitively.

RS PRO products are audited and certified against demanding international standards, inspected for durability and consistency and tested by leading engineers.

Only when products have been through this process are they awarded our seal of approval, quality that can be trusted.

Confidence in this process is reflected in our enhanced product warranties, proof that our products will consistently deliver the performance you expect for a long time to come.



CHOICE

We continuously expand our range.