



rspro.com

# ENERGY EFFICIENCY RANGE GUIDE



## CONTENTS

**ENERGY EFFICIENCY - WORKING ENVIRONMENTS** 3

**PRODUCTION LINE** 4

AVAILABLE RANGE 4

RELATED PRODUCTS 5

**BUILDINGS** 6

AVAILABLE RANGE 6

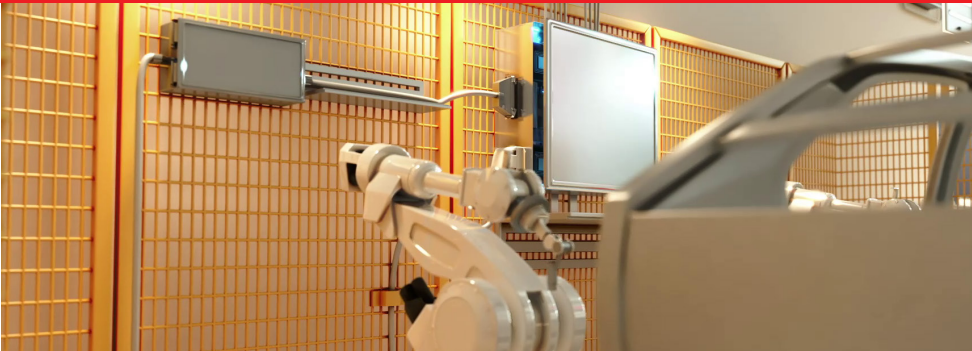
RELATED PRODUCTS 7



# RS PRO ENERGY EFFICIENCY – WORKING ENVIRONMENTS



## PRODUCTION LINES

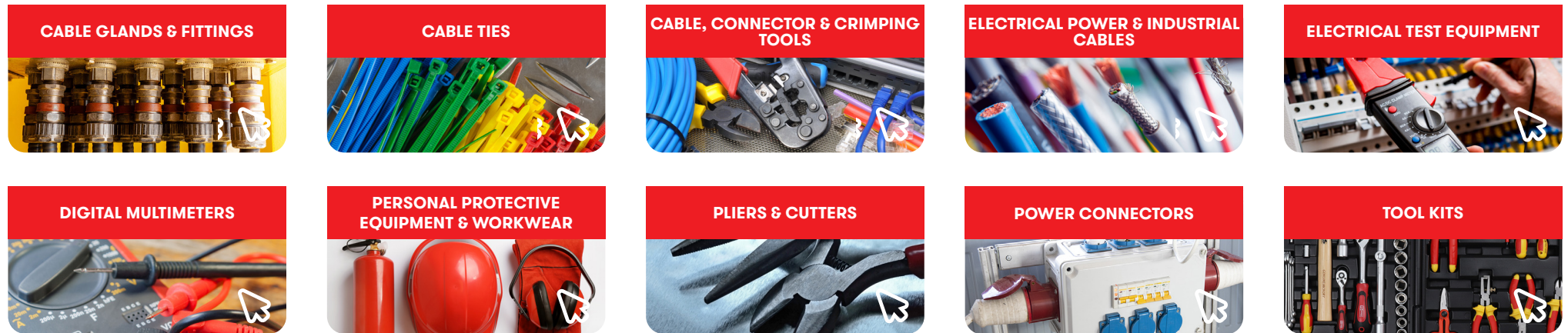


## BUILDINGS



|  |   |   |   |                                    |
|--|---|---|---|------------------------------------|
| <b>AC Motors</b><br>                       | <b>Ammeters</b><br>                       | <b>Axial Fans</b><br>                     | <b>Bearings</b><br>                     | <b>DIN Rail Power Supplies</b><br> |
| <b>Energy Meters</b><br>                   | <b>Filter Fans</b><br>                    | <b>Greases, Oils &amp; Lubricants</b><br> | <b>Infrared Temperature Sensors</b><br> | <b>LED Bulbs</b><br>               |
| <b>Low Bay &amp; High Bay Lighting</b><br> | <b>Motor Starters</b><br>                 | <b>Multifunction Panel Meters</b><br>     | <b>Photoelectric Sensors</b><br>        | <b>Proximity Sensors</b><br>       |
| <b>Rechargeable Batteries</b><br>          | <b>Switching Power Supplies</b><br>       | <b>Temperature Controllers</b><br>        | <b>Temperature Sensitive Labels</b><br> | <b>Thermal Imaging Cameras</b><br> |
| <b>Thermocouples</b><br>                   | <b>Uninterruptible Power Supplies</b><br> | <b>Voltmeters</b><br>                     | <b>Wire Terminals &amp; Splices</b><br> | <b>Work Lights</b><br>             |

## Related Products



## AC/DC Adapters



## Air Quality Monitors



## Battery Box



## DC-DC Converters



## Desk Lamps



## Energy Meters



## Extractor Fans



## Hook Up Wire



## LED Panel Light



## Light Meters



## Power Inverters



## Rechargeable Batteries



## Solar Charge Controllers



## Solar Connectors



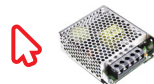
## Solar Panels



## Solar Power Meters



## Switching Power Supplies



## Thermal Imaging Cameras



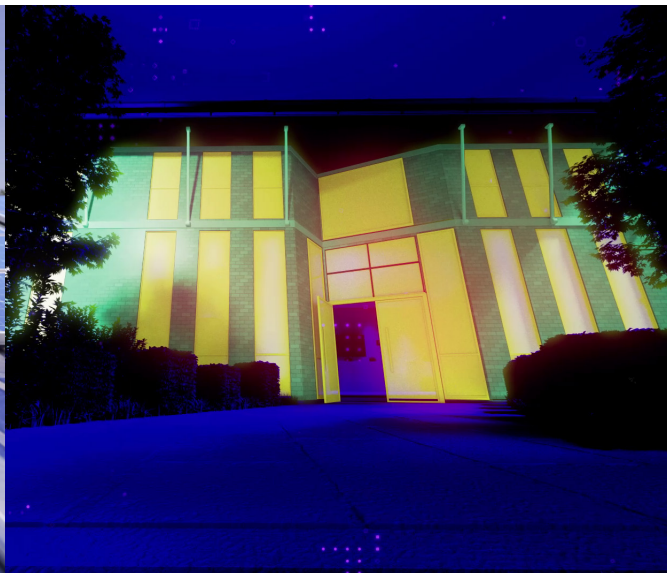
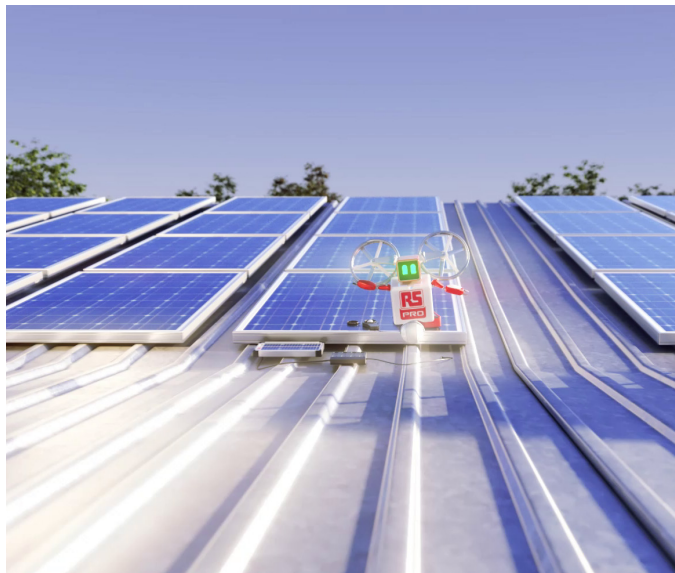
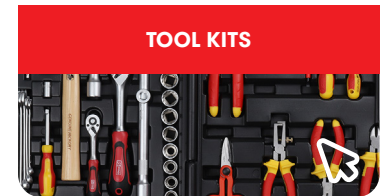
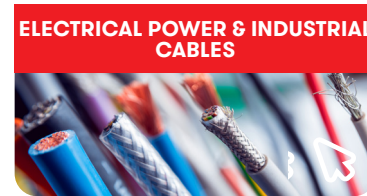
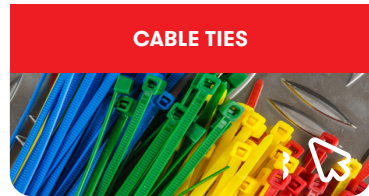
## Uninterruptible Power Supplies



## Wire Terminals & Splices



## Related Products



**RS PRO products are audited against demanding international standards, inspected for durability and consistency and tested by leading engineers.**

Only when products have been through this process are they awarded our seal of approval, quality that can be trusted. Confidence in this process is reflected in our long product warranties, proof that our products will consistently deliver the quality you expect for a long time to come.

