

Data Connectivity Solutions

Product Overview

MADE TO CONNECT

Introduction



Category 6A

Page 8



Category 6

Page 20



Fibre

Page 32



Zone Cabling

Page 58



Cable Management

Page 66



Full Product Catalogue
available at htdata.co.uk

Welcome to HellermannTyton

MADE TO CONNECT

HellermannTyton is an established leader in the design, development and manufacture of innovative network infrastructure solutions for both internal and external copper and fibre networks.

At HellermannTyton we pride ourselves on being a leading solutions provider, offering quality end to end network systems, industry and technical expertise and first-class customer service and support.

Our extensive LAN product range covers Cat6A and Cat6 solutions as well as a comprehensive range of accessories and fibre connectivity. To strengthen our range further, all of our copper and fibre solutions are available in our world leading pre-terminated format, RapidNet.

Simple Navigation – Find it Faster.

We have restructured our product range and our catalogue layout to help you find the products you are looking for quicker and easier...

- Catalogue is laid out by system performance category; Cat6A, Cat6 or Fibre.
- Handy side tabs help you find the pages you need.
- Smaller, more compact catalogue with everything at your fingertips.

This product catalogue has been designed for easy product selection.

If you are looking for a more detailed technical specification, please visit our website www.htdata.co.uk



Scan me with your smart device!

Installer Training from HellermannTyton

HellermannTyton offer a range of training courses to support our products and the applications they are designed for, including City and Guilds, CPD and our own tailored installer courses.

Complete HTC Copper Training - Cat6A and Cat6

We hold one-day courses at our Manufacturing, Research, Development and Design facility in Northampton. Each course runs from 9.30pm until 4.30pm and includes lunch, factory tour and all study material. Participants are required to complete a written test at the end of the course which covers both practical and theoretical aspects. Courses can be tailored to individual company requirements depending on the numbers that require training.

On completion of the Copper training course, HellermannTyton provide each installer with a certificate, full set of course notes and an information pack on the 25 year warranty. As well as face to face training, it is possible for HellermannTyton to deliver online training.

The course covers the following topics:

- Cable Configurations
- Cable Construction
- Power & Data
- Qualified Installer on course completion
- Shielded Systems
- Product Installation
- Best Practice
- HTC Cat6 Product Range
- HTC Cat6A Product Range
- Testing for Certification
- Understanding HT Warranty



25 Year System Warranty

HellermannTyton's 25 Year Warranty is available to all Authorised installers who have completed the HTC Cat6A and Cat6 copper training course.

HellermannTyton CPD Courses

HellermannTyton are CPD accredited. Our latest CPD offering 'A Guide to Shielded Systems, Power and Data Separation' is a short course explaining the Importance of Separation, Power & Data Separation guidelines.

It covers the effects of EMI and Communication Cables, what Crosstalk & Alien Crosstalk is and how to minimise it. It examines Cable Constructions, Shielded Products as well as Bonding Methods. The course also looks at Permanent Link, Grounding & Completing the Earth Loop.

The course is no more than 1 hour 30 mins and will be delivered through an online webinar platform (Teams). On completion of the course you will receive a certificate which can be used to request you CPD points.



City and Guilds Fibre Installer Training

HellermannTyton offer a number of City and Guilds courses with our training partner Lucid Optical Services Ltd including:

- City & Guilds 3668 Level 2 Award in Communications Cabling
 - Unit 1 & 2 Fibre Cabling
 - Unit 4 Blown Fibre Cabling
- City & Guilds 3668 Level 3 Award in Communications Cabling
 - Units 1 & 2 Fibre Cabling
 - Units 4 Blown Fibre Cabling
- City & Guilds 3668 Level 3 Award in Communications Cabling
 - Units 5 Passive Optical Networks



Contact our sales team to discuss your training course requirements:

Tel: +44(0)1604 707420

Email: sales@htdata.co.uk

Web: www.htdata.co.uk



Independent Third-Party Component Compliance

HellermannTyton Connectivity has over 30 years of experience of delivering quality, performance, and reliability of it's structured cabling solutions.

To be able to consistently deliver high performance solutions, it is pivotal that the HTC series of Category 6 and Category 6A products are independently tested and verified by a reputable third-party test laboratory.

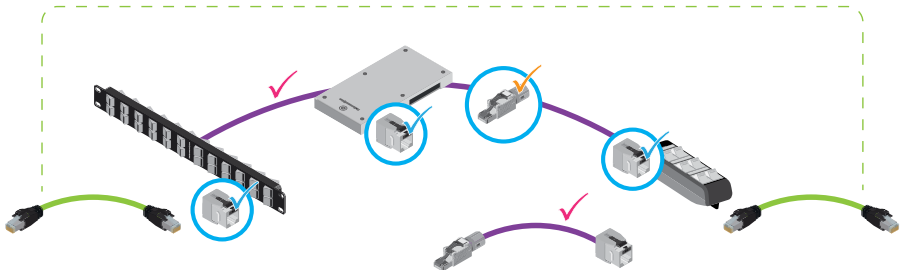
HellermannTyton Connectivity has chosen component level testing for the HTC range of Category 6 and Category 6A products. This outlines the dedication for quality, performance, and reliability of the product solutions. It also guarantees true performance when installed correctly by an authorised installer.

Currently in the UK, HellermannTyton are the only UK manufacturer to have a component compliant Category 6 UTP system where industry standard PCB punch down panels and PCB Punch down Euro / 6C modules are used. In addition, HellermannTyton are currently the only manufacturer to have full Category 6A MPTL verification.

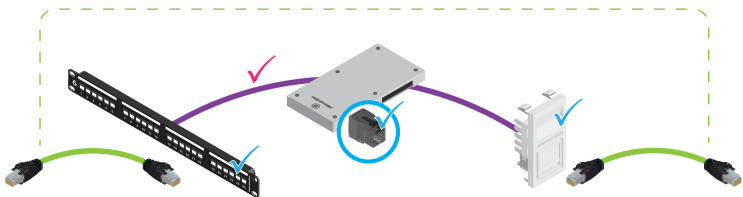









Category 6A



Category 6



-  Channel
-  Cable
-  Component Compliant
-  MPTL Compliant
-  Communications Cable Compliant



Category 6A

Cable		F/FTP Cca Solid Core Cable	12
Patch Leads		Solid Patch Leads	13
		Stranded Patch Leads	14
Outlets		Shielded Keystone Jack	15
		Shielded Field Termination Plug	15
Panels	Modular	Angled 1U 24 Port Panel	16
		Flat 1U 24 Port Panel	16
	Cassettes	6 Port F/FTP	17
Pre-terminated RapidNet	Panels	1U 6 Port Cassette Shielded Panel	18

Category 6A Overview

Category 6A also known as Category 6 Augmented is an Ethernet cabling system that supports higher bandwidth compared to previous generations (Category 5e and 6). It has improved specifications for reduced crosstalk and signal attenuation, allowing for faster data transfer rates (up to 10Gbps) and longer cable runs (up to 100 meters). This makes it suitable for high-performance network installations in enterprise and data centre environments.

HellermannTyton Connectivity manufacture Cat6A as a shielded system. This helps to reduce alien crosstalk and alleviates the need to run alien crosstalk testing in the field.

Speed	Bandwidth	Permanent Link (max)	Channel Link (max)
10 Gigabit Ethernet	500MHz	90 metres	100 metres

What are some typical applications?



Data centres

High-speed connectivity and large amounts of data transfer between servers and storage systems.



Broadcasting and Multimedia

Transmission of high-definition video and audio signals in broadcast and multimedia environments.



Enterprise networks

Applications that require high-speed connectivity, such as wireless access points to deliver up to 6.9Gbp/s, video conferencing, file transfers, and voice over IP (VoIP).



Health Care

Supports the increase in use of connected devices.
Transfer of large medical imaging files, such as X-rays, CT scans, and MRI images. Wireless access points.



Education

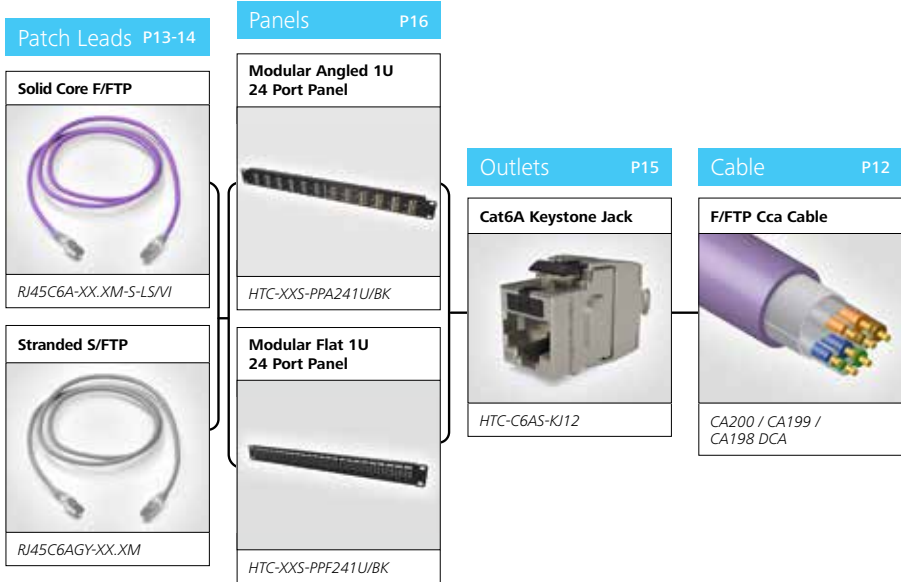
Low-latency for online learning platforms, increased bandwidth to support multiple AV systems including 4K.

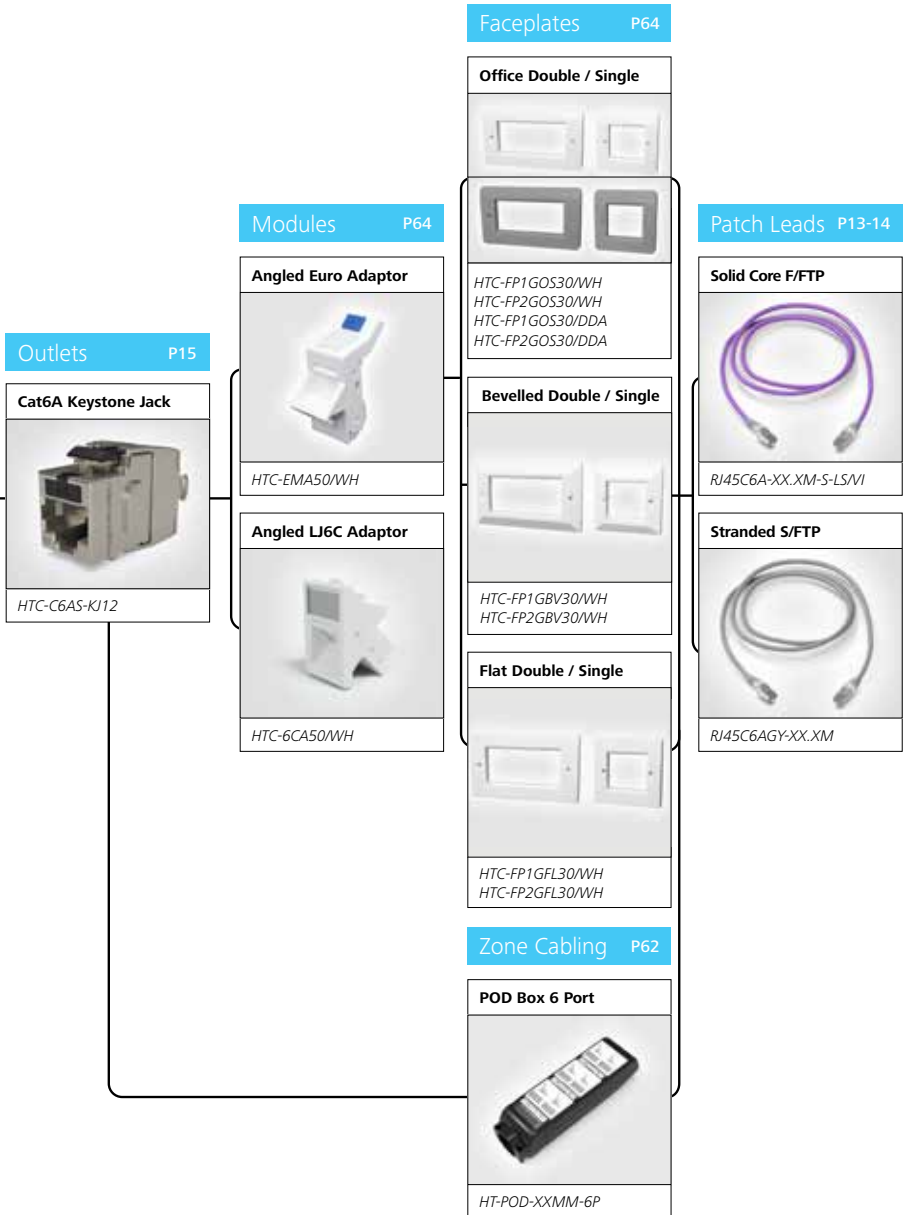


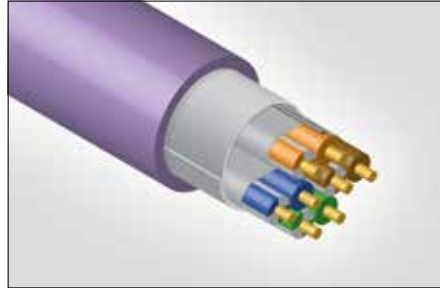
Power over Ethernet (PoE)

Cat6A is recommended for new PoE installations as it better supports the higher power requirement of 100 watts. The HTC Cat6A range has been tested to support PoE++ Type 4 standard (100 watt PoE)

Category 6A Data Product Selector





F/FTP Cca**4 Pair 23AWG Solid Core**

F/FTP Bulk Cable.

Product Description

The Category 6A Cable is constructed as a F/FTP Cable and exceeds the relevant performance requirements of ISO/IEC 11801-2 and TIA/ANSI 568-C.2 EN50173, IEC 61156-5, EN 50288-10-1. The LSHF-FR sheath conforms with fire rating IEC 60332-1, 60332-3-24, 60754-2 and 61034.

The copper conductor is AWG 23 and the cable has a nominal overall diameter of 7.7mm. This cable complies with the requirements within the Construction Products regulations EN50575:2014+A1:2016 - Power, control and communication cables. Cables for general applications in construction works subject to reaction to fire requirements.



PoE++ Type 4
Compatible.

Features and Benefits

- Exceeds Category 6A performance standards
- Uncompromised support for 10G
- Shielding eliminates alien crosstalk
- CPR Euroclass rating: Cca, S1a, d1, a1 and Dca, S2, d1, a1
- Suitable for Dca and Eca specified installations
- Metre marked for accurate measuring
- Supplied on 500m drums and 305m Reelex boxes

ORDER INFO	Cable Type	Screening Type	EuroClass	Unit	UNS
CA200	Category 6A 4 Pair 23AWG Solid Core	F/FTP - Overall Foil and Individual Pairs in Foil	Cca-s1a-d1-a1	305m Reelex	851-05107
CA199			Cca-s1a-d1-a1	500m Drum	851-05105
CA198 DCA			Cca-s2-d1-a1	500m Drum	851-05106

BS6701 A1:2017 States the minimum Level of cabling within a building for reaction to fire as being Cca-s1b,d2,a2. Subject to technical changes.

Solid Patch Leads

RJ45C6A-10.0M-S-LS/VI

Product Description

Cat6A Solid Core patch leads are high-performance Ethernet cables used for connecting network devices. They feature a solid copper core which provides better electrical conductivity compared to stranded cables, making them ideal for high-speed network installations.

The Cat6A specification provides bandwidth up to 500 MHz and supports data transfer rates of up to 10 Gbps whilst preventing crosstalk and interference, ensuring reliable data transmission. The solid core construction makes them durable and long-lasting, suitable for both permanent and temporary installations.

Cat6A solid core patch leads are also compatible with Power over Ethernet (PoE) technology, allowing the delivery of both power and data to network devices through a single cable. Cat6A Solid Core patch leads are an ideal choice for data centres, enterprise networks, and other demanding network applications.

HellermannTyton Connectivity's solid core leads are made to order in our Northampton factory. They can be produced to your specified length using our UKCA / CE approved F/FTP cable in either Cca or Dca euro class cable.



RJ45C6A-10.0M-S-LS/VI

Features and Benefits

- Exceeds Category 6A performance
- Uncompromised support of 10G Ethernet
- Shielding eliminates alien crosstalk
- Made to Order in our Northampton Factory
- Lengths to your specification
- Supported by UKCA / CE and ETL listed cable
- Supports PoE Type 4 - 100 watt
- Cca or Dca cable variants
- F/FTP Shielded Construction



POE++ Type 4
Compatible.

ORDER INFO	Cable Type	Screening Type	Length (m)	Colour	UNS
RJ45C6A-10.0M-S-LS/VI	Cat6A Solid	F/FTP	10.0	Violet	851-30117
RJ45C6A-20.0M-S-LS/VI			20.0		851-30224
RJ45C6A-30.0M-S-LS/VI			30.0		851-30110
RJ45C6A-40.0M-S-LS/VI			40.0		851-30225
RJ45C6A-50.0M-S-LS/VI			50.0		851-30226
RJ45C6A-60.0M-S-LS/VI			60.0		851-30227
RJ45C6A-70.0M-S-LS/VI			70.0		851-30228
RJ45C6A-80.0M-S-LS/VI			80.0		851-30229
RJ45C6A-90.0M-S-LS/VI			90.0		851-30230

All dimensions in mm. Subject to technical changes.

Stranded Patch Leads

S/FTP

Product Description

Cat6A S/FTP stranded patch leads are Ethernet cables used to connect network devices. They are constructed to include an overall braid shield and foiled twisted pairs (S/FTP) to provide maximum protection against electromagnetic interference (EMI) and crosstalk.

With a bandwidth of up to 500 MHz, these cables support high-speed data transfer rates of up to 10 Gbps and are ideal for use in environments where EMI is a concern and high-speed connectivity is required, such as in data centres and enterprise networks.

Additionally, these patch leads are compatible with Power over Ethernet (PoE) technology, allowing for the delivery of both power and data through a single cable. They are available in a variety of lengths and colours, making them a versatile solution for your network connectivity needs.



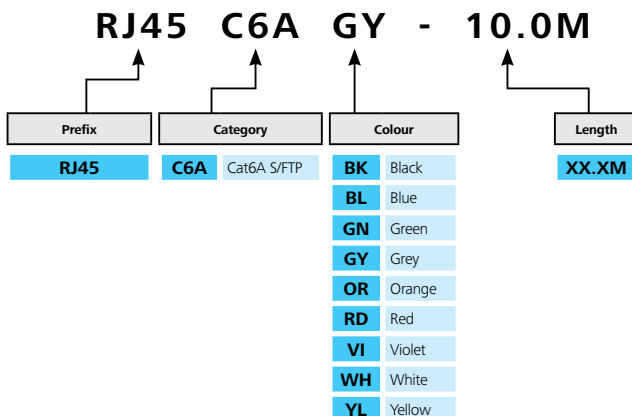
POE++ Type 4
Compatible.



RJ45C6AGY-10.0M

Features and Benefits

- Exceeds Category 6A performance
- Uncompromised support of 10G ethernet
- Shielding eliminates alien crosstalk
- Variety of standard lengths and colours
- Non standard lengths and labelling specifications are made to order
- LSOH Cable
- S/FTP Shielded Construction



RJ45C6AGY-10.0M = Cat6A S/FTP Patch Lead with 10.0M Grey Cable.

Cat6A Keystone Jack

HTC-C6AS-KJ12



Product Description

The HTC Series Category 6A Shielded Keystone Jack has been designed to support today's network infrastructure requirements including Ethernet 10BASE-T, 100BASE-T (fast Ethernet), 1000BASE-T (Gigabit Ethernet), 10GBASE-T (10 Gigabit Ethernet) and Voice over IP (VoIP). With greater demand for PoE implementation the HTC Series Cat6A Keystone Jack has been configured to bolster today's PoE requirements, supporting the most up to date standard for PoE ++ (Type 4) as described in IEEE 802.3bt. 360° Shielding prevents alien crosstalk and helps to dissipate heat produced by PoE applications. The short body allows for use in more restrictive areas of installation. The tool-free design allows for fast on-site installation without the need for any specialised termination tool.



POE++ Type 4
Compatible.



Category 6A Keystone Jack.

Features and Benefits

- Plastic Free Packaging
- Tool-Free Design
- Supports Cat6A 10G 500MHz
- Supports PoE++ Type 4
- Shielded to prevent Alien Crosstalk
- 3rd party tested
- Short Jack length to support restrictive spaces

Cat6A Field Termination Plug

HTC-C6AS-MP12



Product Description

With greater demand for PoE implementation the HTC Series Cat6A Field Termination Plug has been configured to bolster today's PoE requirements, supporting the most up to date standards for PoE++ (Type 4) as described in IEEE 802.3bt. Field termination plugs are used to create Modular Plug Terminated Links (MPTL) on-site for direct connection to fixed location devices. 360° Shielding prevents alien crosstalk (AXT) and helps to dissipate any heat produced from PoE applications. The tool-free design allows for fast on-site termination without the need for any specialised tools.



POE++ Type 4
Compatible.



Cat6A Field Termination Plug.

Features and Benefits

- Plastic Free Packaging
- Shielded to prevent Alien Crosstalk (AXT)
- Compatible with Cat6A shielded Cable
- Backwards Compatible with Cat6 Shielded & Unshielded Cable
- Tool-Free Design
- Supports Cat6A 10G 500mhz

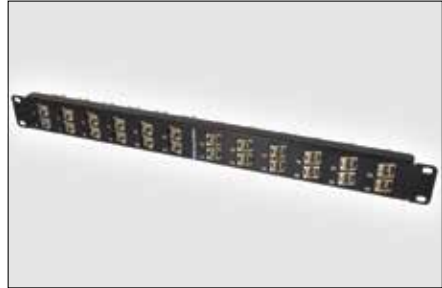
ORDER INFO	Dimensions			Screening Type	Unit	UNS
	H	W	D			
HTC-C6AS-KJ12	21	16	34	Shielded	12pcs	852-40012
HTC-C6AS-MP12	20	15	58			852-40015

All dimensions in mm. Subject to technical changes.

Modular Angled 1U 24 Port Panel**HTC-XXS-PPA241U/BK****Product Description**

The HTC Series Modular patch panel from HellermannTyton is a 1U panel that presents 24 keystone jacks at an angle. The panel can be used in a shielded or unshielded system and accepts the HTC Series Cat6A tool-free jack and the HTC Cat6 UTP jack.

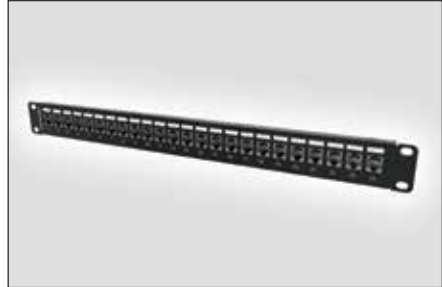
The panel has been designed with 12 ports dressed to the left and 12 ports dressed to the right. The angled presentation allows patch leads to be routed out to the side management within the cabinet, reducing the need to use additional cable managers and maximising rack space and port density. The angled ports also protect the patch lead cables providing optimum bend radii for high performance.

*Modular Angled 1U 24 Port Panel (shown loaded).***Features and Benefits**

- 24 ports divided left and right to support cable dressing
- Reduces the need for 19" cable management bars
- Directs patch leads to cabinet vertical managers
- Increases cabinet port density
- Can be used for Shielded and Unshielded applications
- Supplied with mounting fixings & earth wire
- Compatible rear management bar available
- Plastic free packaging
- Compatible for shielded and unshielded jacks

Modular Flat 1U 24 Port Panel**HTC-XXS-PPF241U/BK****Product Description**

The HTC Series 1U 24 Port Modular patch panel has been developed to allow for simplistic installation. It accepts HTC compatible Keystone jacks. It Features a folding rear cable manager with cable tie points that simply snaps into place without the need for extra tools or manpower.

*Modular Flat 1U 24 Port Panel (shown loaded).***Features and Benefits**

- Plastic Free Packaging
- Detachable, Folding Cable Manager
- Ideal for Shielded or Unshielded Requirements
- 1U 24 Ports
- Compatible with 19 Inch Mounting Profiles

ORDER INFO	Dimensions			Screening Type	Presentation	Port Count	U Size	UNS
	H	W	D					
HTC-XXS-PPA241U/BK	44	483	15	Shielded	Angled	24 Port	1U	853-55010
HTC-XXS-PPF241U/BK	44	483	10.1	Shielded	Flat	24 Port	1U	853-55009

All dimensions in mm. Subject to technical changes.

RapidNet

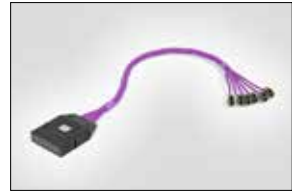
6 Port F/FTP



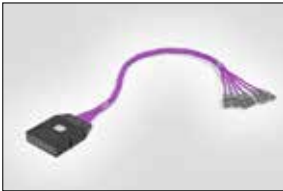
RN06G6A Cat6A U/FTP Cassette



RN06G6A-CACAXX Cassette to Cassette



RN06G6A-CAKJXX Cassette to Keystone Jack



RN06G6A-CAPLXX Cassette to RJ45



RN06G6A-CABEXX Cassette to Bare End



RN06G6A-CAPBXX Cat6A U/FTP Cassette to Pod

Product Description

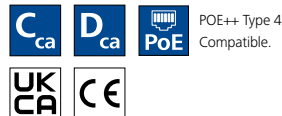
The RapidNet product range is a pre-terminated and pre-tested network solution that offers speed and convenience within mission critical environments.

The Category 6A RapidNet solution is perfectly suited for the Datacentre market where the reduction of installation time is pivotal to project success. Class Ea systems are recommended as the minimum to be installed within the datacentre main, intermediate and zone cabling areas.

RapidNet offers a number of connectivity options to give you flexibility and choice within your network design.

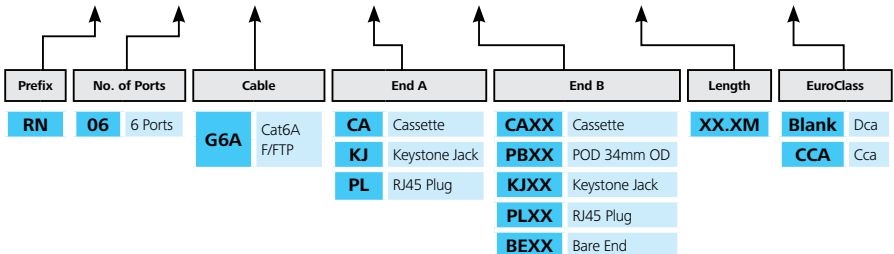
Features and Benefits

- Exceeds Category 6A performance standards
- 24 Ports per 1U
- Factory pre-terminated and tested
- Reduce installation times by up to 85%
- Ideal solution for Datacentres
- Backward compatible with Cat6, Cat5e and voice
- Available in Dca and Cca Euroclass



POE++ Type 4
Compatible.

RN 06 G6A - CA CAXX - 10.0M - CCA



RN06G6A-CACAXX-10.0M-CCA = 6 Port RapidNet Cassette to Cassette with 10.0m Cat6A F/FTP Cca Cable.

1U 6 Port Cassette Shielded Panel

RNA6G6A-PA1URS-XX.XX

Product Description

The RapidNet 6 port Shielded Patch Panel accommodates four 6 port Category 6A cassettes. The panel offers dual labelling fields for each cassette and is supplied with Rack Snap fixings as standard. The RapidNet Cassettes simply push into the panel, snapping in with a push down clip. A fully loaded panel presents 24 Category 6A RJ45 ports.

The RapidNet Category 6A Shielded Patch Panel frame is manufactured from matt black powder coated mild steel to the standard 19" width and has a metal shielding plate with 3 earthing anchor points. The dual labelling fields have a magnifying lens.

The panel is supplied with Rack Snap fixings as standard, panels can also be supplied with Cage Nuts, screw fixings or without fixings if required.



RNA6G6A-PA1URS-XX.XX 1U 6 Port Cassette Shielded Panel.

Features and Benefits

- Fits all 19" racks, frames and cabinets
- Supplied with Rack Snaps as standard
- Simple, easy insertion with push down clip
- Accommodates 4 shielded Category 6A cassettes
- Dual labelling fields

ORDER INFO	Dimensions			Screening Type	Port Count	U Size	UNS
	H	W	D				
RNA6G6A-PA1URS-XX.XX	44	483	56	Shielded	4 Cassette	1U	859-50851

All dimensions in mm. Subject to technical changes.

Component Compliant Cat6A/Cat6 Systems

HellermannTyton Connectivity have chosen component level testing for the HTC range of Category 6 and Category 6A products. This outlines the dedication for quality, performance, and reliability of the product solutions. It also guarantees true performance when installed correctly by an authorised installer.

Currently* in the UK, HellermannTyton are the only UK manufacturer to have a component compliant Category 6 UTP system where industry standard PCB punch down panels and PCB Punch down Euro / 6C modules are used. In addition, HellermannTyton are currently the only manufacturer to have full Category 6A MPTL verification.

**As of March 2023*

MADE TO CONNECT



6 Category 6



Category 6

Cable	U/UTP Cca Cable	24	
Patch Leads	Solid Patch Leads	25	
	Stranded Patch Leads	26	
Outlets	Jacks	Cat6 Unshielded Keystone Jack	27
	Modules	Euro	28
		LJ6C	28
Panels	Moulded Facia Patch Panel	29	
	Metal Facia Patch Panel	29	
	Cassettes	6 Port U/UTP	30
Pre-terminated RapidNet	Panels	1U 6 Port Cassette Panel	31
		2U 6 Port Cassette Panel	31

Category 6 Overview

Category 6 (Cat 6) cabling is an Ethernet system used for networking that supports data transmission speeds up to 1 Gbps. It provides improved performance compared to previous generations of systems such as CAT5E, and supports a range of frequencies up to 250 MHz. Cat 6 cabling is used for a variety of network connections and the recommended minimum standard for commercial and enterprise environments

Speed	Bandwidth	Permanent Link (max)	Channel Link (max)
1 Gigabit Ethernet	250MHz	90 metres	100 metres

What are some typical applications?



Data centres

High-speed connectivity and large amounts of data transfer between servers and storage systems.



Broadcasting and multimedia

Transmission of high-definition video and audio signals in broadcast and multimedia environments.



Enterprise networks

Applications that require high-speed connectivity, such as wireless access points to deliver up to 6.9Gbps, video conferencing, file transfers, and voice over IP (VoIP).



Health Care

Supports the increase in use of connected devices. Transfer of large medical imaging files, such as X-rays, CT scans, and MRI images. Wireless access points.



Education

Low-latency for online learning platforms, increased bandwidth to support multiple AV systems including 4K.

6 Category 6

Category 6 Data Product Selector

Patch Leads P25-26

Solid Core U/UTP Patch Leads



RJ45NGB-XX.XM-S-LS/VI-CCA

Stranded U/UTP Patch Leads



RJ45NGB-XX.XM-Colour choice

Panels P29

Cat6 Moulded Facia Patch Panel



HTC-C6U-PP241U/BK/A

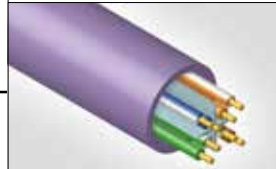
Cat6 Metal Facia Patch Panel



HTC-C6U-PP241U/BK/B

Cable P24

U/UTP Cca Cable



CA196 / CA076 DCA

Outlets P28

Euro Module



HTC-C6U-EM50-WH

LJ6C Module



HTC-C6U-6C50-WH

Faceplates P64

Bevelled Double / Single



HTC-FP1GBV30/WH
HTC-FP2GBV30/WH

Flat Double / Single



HTC-FP1GFL30/WH
HTC-FP2GFL30/WH

Office Double / Single



HTC-FP1GOS30/WH
HTC-FP2GOS30/WH
HTC-FP1GOS30/DDA
HTC-FP2GOS30/DDA

Patch Leads P25-26

Solid Core U/UTP Patch Leads



RJ45NGB-XX.XM-S-LS/VI-CCA

Stranded U/UTP Patch Leads



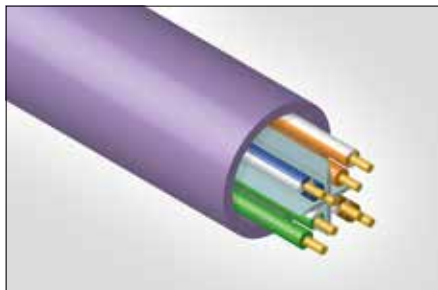
RJ45NGB-XX.XM-Colour choice

6 Category 6

Cable

U/UTP Cca Cable

4 Pair 23AWG Solid Core



U/UTP Bulk Cable.

Product Description

The Category 6 Cable is constructed as a U/UTP Cable and exceeds the relevant performance requirements of ISO/IEC 11801-2 and TIA/ANSI 568-C.2 EN50173, IEC 61156-5, EN 50288-10-1. The LSHF-FR sheath conforms with fire rating IEC 60332-1, 60332-3-24, 60754-2 and 61034.

The copper conductor is AWG 23 and the cable has a nominal overall diameter of 7.1mm. This cable complies with the requirements within the Construction Products regulations EN50575:2014+A1:2016 - Power, control and communication cables. Cables for general applications in construction works subject to reaction to fire requirements.

Features and Benefits

- Exceeds Category 6 performance standards
- CPR Euroclass rating: Cca, S1a, d1, a1 and Dca, S2, d1, a1
- Suitable for Cca, Dca and Eca specified installations
- Metre marked for accurate measuring
- Supplied in sturdy Reelex boxes of 305m



NBASE-T 5Gbs & 2.5Gbs Ready.



ORDER INFO	Cable Type	Screening Type	EuroClass	Unit	UNS
CA196	Category 6 4 Pair 23AWG Solid Core	U/UTP - Unshielded No Foil	Cca-s1a-d1-a1	305m Reelex	851-05093
CA076 DCA		U/UTP - Unshielded No Foil	Dca-s2-d1-a1	305m Reelex	851-05099

BS6701 A1:2017 States the minimum Level of cabling within a building for reaction to fire as being Cca-s1b,d2,a2. Subject to technical changes.

Solid Core U/UTP Patch Leads

Cat6 Solid Core

Product Description

Cat6 Solid Core patch leads are high-performance Ethernet cables used for connecting network devices. They feature a solid copper core which provides better electrical conductivity compared to stranded cables, making them ideal for high-speed network installations.

The Cat6 specification provides bandwidth up to 250 MHz and supports data transfer rates of up to 1 Gbps. The solid core construction makes them durable and long-lasting, suitable for both permanent and temporary installations.

Cat6 Solid Core patch leads are an ideal choice for enterprise, education and other demanding network applications.

HellermannTyton Connectivity's solid core leads are made to order in our Northampton factory. They can be produced to your specified length using our UKCA / CE approved U/UTP cable in either Cca or Dca euroclass cable



RJ45NGB-10.0M-S-LS/VI-CCA.

Features and Benefits

- Exceeds Category 6 performance
- Uncompromised support of 1G Ethernet
- Made to Order in our Northampton Factory
- Lengths to your specification
- Supported by UKCA / CE and ETL listed cable
- Cca or Dca cable variants
- U/UTP Shielded Construction



ORDER INFO	Cable Type	Screening Type	Length (m)	Colour	UNS
RJ45NGB-10.0M-S-LS/VI-CCA	Cat6 Solid	U/UTP	10.0	Violet	851-30108
RJ45NGB-20.0M-S-LS/VI-CCA			20.0		851-16472
RJ45NGB-30.0M-S-LS/VI-CCA			30.0		851-16473
RJ45NGB-40.0M-S-LS/VI-CCA			40.0		851-16474
RJ45NGB-50.0M-S-LS/VI-CCA			50.0		851-16475
RJ45NGB-60.0M-S-LS/VI-CCA			60.0		851-16476
RJ45NGB-70.0M-S-LS/VI-CCA			70.0		851-16477
RJ45NGB-80.0M-S-LS/VI-CCA			80.0		851-16478
RJ45NGB-90.0M-S-LS/VI-CCA			90.0		851-16479

Subject to technical changes. Non-standard lengths available on request.

6 Category 6

Patch Leads

Stranded U/UTP Patch Leads

Cat6 Stranded

Product Description

The cable consists of 8 colour coded copper conductors twisted together to form 4 pairs with varying lay lengths. The cable is sheathed in LSOH material making the patch leads suitable for internal use.

HellermannTyton's Patch Leads are manufactured to the highest quality and tested to exceed the latest published versions of ISO/IEC 11801, BS/EN 50173 and ANSI/TIA/ EIA 568-C.

NB. Part numbers shown are for standard lengths and colours, other lengths are available.

NBase-T
COMPATIBLE

NBASE-T 5Gbs &
2.5Gbs Ready.

Features and Benefits

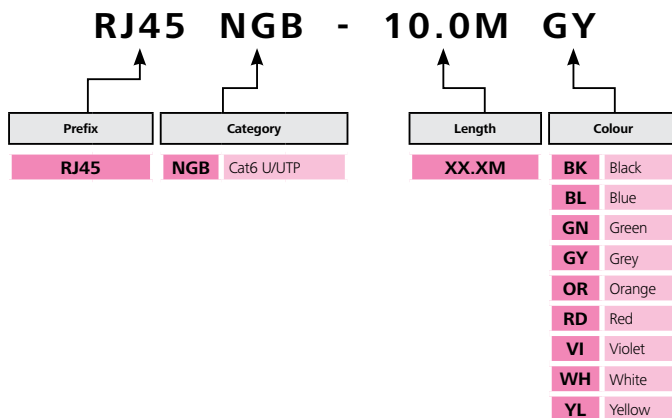
- Exceeds Category 6 performance standards
- Pre-tested with test results supplied
- Manufactured with LSOH Sheath
- Available in lengths of 1m, 2m, 3m, 5m and 10m



RJ45NGB in Black.



RJ45NGB in Blue.



RJ45NGB-10.0MGY = Cat6 U/UTP Patch Lead with 10.0M Grey Cable.

Cat6 Unshielded Keystone Jack

HTC-C6U-KJ12



Product Description

The HTC Series Category 6 unshielded Tool-free Keystone Jack is designed to support Ethernet 10BASE-T, 100BASE-T (Fast Ethernet), 1000BASE-T (Gigabit Ethernet), 155 Mb/s ATM, Token Ring 4/16, voice/data systems and Voice over Internet Protocol (VoIP) systems running over a Category 6 cabling system and is backwards compatible with legacy Category 5e, Category 5 and voice network infrastructures.

Short body allows for use in more restrictive areas of installation. The tool-free design allows for fast on-site installation without the need for any specialised termination tool.



NBASE-T 5Gbs & 2.5Gbs Ready.



Category 6 Unshielded Keystone Jack.

Features and Benefits

- 3rd party tested & verified - component compliant
- Supports Cat6 1G 250Mhz
- Plastic free packaging
- Tool-free design
- Short Jack length to support restrictive spaces

ORDER INFO	Dimensions			Shielding Type	Unit	UNS
	H	W	D			
HTC-C6U-KJ12	21	16	34	Unshielded	12pcs	852-25196

All dimensions in mm. Subject to technical changes.

6 Category 6

Outlets

Cat6 Modules

Euro and LJ6C



Product Description

The HTC Series Category 6 unshielded LJ6C and Euro modules are designed to support Ethernet 10BASE-T, 100BASE-T (Fast Ethernet), 1000BASE-T (Gigabit Ethernet), 155 Mb/s ATM, Token Ring 4/16, voice/data systems and Voice over Internet Protocol (VoIP) systems running over a Category 6 cabling system and are backwards compatible with legacy Category 5e, Category 5 and voice network infrastructures.



NBase-T 5Gbs & 2.5Gbs Ready.



Euro Cat6 Module.



LJ6C Cat6 Module.

Features and Benefits

- Category 6 component compliant
- Footprint
 - LJ6C 38.5x25mm
 - Euro 50x25mm
- Made from ABS + PC
- Available in White
- Compatible with HTC Series faceplates
- Includes mini-zip ties and instructions
- Plastic free packaging
- Bulk packed reduce carbon footprint

ORDER INFO	Dimensions			Style	Colour	Unit	UNS
	H	W	D				
HTC-C6U-EM50/WH	50	25	18	Euro	White	50pcs	852-05700
HTC-C6U-6C50/WH	38.5			LJ6C			852-30100

All dimensions in mm. Subject to technical changes.

Cat6 Moulded Facia Patch Panel

HTC-C6U-PP241U/BK/A



Product Description

The HTC Series Category 6 Patch Panel is designed to support Ethernet 10BASE-T, 100BASE-T (Fast Ethernet), 1000BASE-T (Gigabit Ethernet), 155 Mb/s ATM, Token Ring 4/16, voice/data systems and Voice over Internet Protocol (VoIP) systems running over a Category 6 cabling system and is backwards compatible with legacy Category 5e, Category 5 and voice network infrastructures.



NBase-T 5Gbs & 2.5Gbs Ready.



Cat6 Moulded Facia Patch Panel.

Features and Benefits

- 3rd Party Certified for component compliance and POE++
- Steel frame and ABS facia
- Dual use IDC for Krone and 110 insertion tools
- Integral Labelling fields
- Includes rear cable manager
- Plastic free packaging

Cat6 Metal Facia Patch Panel

HTC-C6U-PP241U/BK/B



Product Description

The HTC Series Category 6 Patch Panel is designed to support Ethernet 10BASE-T, 100BASE-T (Fast Ethernet), 1000BASE-T (Gigabit Ethernet), 155 Mb/s ATM, Token Ring 4/16, voice/data systems and Voice over Internet Protocol (VoIP) systems running over a Category 6 cabling system and is backwards compatible with legacy Category 5e, Category 5 and voice network infrastructures.



NBase-T 5Gbs & 2.5Gbs Ready.



Cat6 Metal Facia Patch Panel.

Features and Benefits

- 3rd Party Certified for component compliance and POE++
- Steel frame and face
- Dual use IDC for Krone and 110 insertion tools
- Printed Labelling fields
- Includes rear cable manager
- Plastic free packaging

ORDER INFO	Dimensions			Screening Type	Presentation	Port Count	U Size	UNS
	H	W	D					
HTC-XXS-PPA241U/BK	44	480	31	Unshielded	Flat	12 Port	1U	853-45054
HTC-XXS-PPF241U/BK			30					853-45055

All dimensions in mm. Subject to technical changes.

RapidNet

6 Port U/UTP



RN06U6 Cat6 U/UTP Cassette



RN06U6-CABEXX Cassette to Bare End



RN06U6-CAKJKB Cassette to Keystone Jack

Product Description

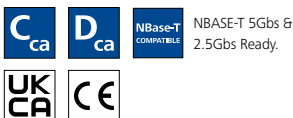
The RapidNet product range is a pre-terminated and pre-tested network solution that offers speed and convenience within mission critical environments.

The Category 6 RapidNet solution is perfectly suited for office premises where Class E is now the minimum recommended system to be installed.

RapidNet offers a number of connectivity options to give you flexibility and choice within your network design.

Features and Benefits

- Exceeds Category 6 performance standards
- Capacity up to 24 Ports per 1U
- Factory pre-terminated and tested
- Reduce installation times by up to 85%
- Ideal solution for Commercial, office & data centre
- Backward compatible with Cat5e and voice
- Available in Dca and Cca Euroclass



RN 06 UC6 - CA CAXX - 10.0M - CCA

Prefix	No. of Ports	Cable	End A	End B	Length	EuroClass
RN	06 6 Ports	UC6 Cat6 U/UTP	CA Cassette PA POD 29mm PB POD 34mm KJ Keystone Jack PL RJ45 Plug	CAXX Cassette PAXX POD 29mm PBXX POD 34mm KJXX Keystone Jack PLXX RJ45 Plug KJXX Keystone Jack BEXX Bare End	XX.XM	BLANK Dca CCA Cca

RN06UC6-CACAXX-10.0M-CCA = 6 Port RapidNet Cassette to Cassette with 10.0m Cat6 U/UTP Cca Cable.

1U 6 Port Cassette Panel

RNA6UXX-PA1URS-XX.XX

Product Description

The RapidNet 6 port Patch Panel accommodates four 6 port copper or fibre cassettes. The panel offers dual labelling fields for each cassette and is supplied with Rack Snap fixings as standard. The RapidNet Cassettes simply push into the panel, snapping in with a push down clip. A fully loaded 1U panel presents 24 Category 6A UTP, Category 6 or Category 5e RJ45 ports.

The RapidNet panel is manufactured from 1.5mm matt black powder coated mild steel to the standard 19" width and has dual labelling fields with a magnifying lens.

The panel is supplied with Rack Snap fixings as standard, panels can also be supplied with Cage Nuts, screw fixings or without fixings if required.



RNA6UXX-PA1URS-XX.XX 1U 6 Port Cassette Panel.

Features and Benefits

- Fits all 19" racks, frames and cabinets
- Supplied with Rack Snaps as standard
- Simple, easy insertion with push down clip
- Accommodates 4 Category 6A UTP, Category 6, Category 5e or fibre cassettes
- Dual labelling fields
- Also available in 2U 48 port configuration

2U 6 Port Cassette Panel

RNA6UXX-PA2URS-XX.XX

Product Description

The RapidNet 6 port Patch Panel accommodates eight 6 port copper or fibre cassettes. The panel offers dual labelling fields for each cassette and is supplied with Rack Snap fixings as standard. The RapidNet Cassettes simply push into the panel, snapping in with a push down clip. A fully loaded 2U panel presents 48 Category 6A UTP, Category 6 or Category 5e RJ45 ports.

The RapidNet panel is manufactured from 1.5mm matt black powder coated mild steel to the standard 19" width and has dual labelling fields with a magnifying lens.

The panel is supplied with Rack Snap fixings as standard, panels can also be supplied with Cage Nuts, screw fixings or without fixings if required.



RNA6UXX-PA2URS-XX.XX 2U 6 Port Cassette Panel.

Features and Benefits

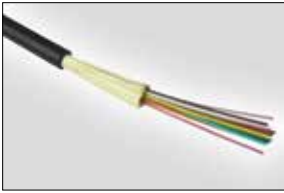
- Fits all 19" racks, frames and cabinets
- Supplied with Rack Snaps as standard
- Simple, easy insertion with push down clip
- Accommodates 8 Category 6A UTP, Category 6, Category 5e or fibre cassettes
- Dual labelling fields
- Also available in 1U 24 port configuration

ORDER INFO	Dimensions			Screening Type	Port Count	U Size	UNS
	H	W	D				
RNA6UXX-PA1URS-XX.XX	44	483	56	Unshielded	4 Cassette	1U	859-30019
RNA6UXX-PA2URS-XX.XX	88	483	56		8 Cassette	2U	859-30034

All dimensions in mm. Subject to technical changes.

Fibre Cable - Multimode and Single Mode

OM4, OM3 and OS2



Tight Buffered Fibre Cable



Product Description

HellermannTyton multicore Fibre cables are available for both single mode and multimode applications. They are designed and tested to support LAN and WAN backbones, telecom access lines, fibre to business and fibre to the building drop connections as well as fibre to the home drop and access connections.

The LSOH sheath allows for cables to be used in both internal dry installation and damp environments and is equally suited for installation in ducts and on trays. All cables are designed to be easy to terminate, strong and capable of withstanding the strains of installation.

Our Bulk fibre cables conform to the Construction Products Regulation (CPR) and are available in Cca Euroclass.



**For Fibre Cleaning Tools
please see page 49**

Cable - Multimode

ORDER INFO	Performance	Construction	EuroClass	Fibre Count	UNS
HT-OM4-12-TB-CCA	OM4	Tight Buffered	Cca	12	855-40126
HT-OM4-12-TB			Dca		855-40113
HT-OM4-24-TB-CCA			Cca	24	855-40129
HT-OM4-24-TB			Dca		855-40114
HT-OM3-12-TB-CCA	OM3		Cca	12	855-40125
HT-OM3-12-TB			Dca		855-40091
HT-OM3-24-TB-CCA			Cca	24	855-40128
HT-OM3-24-TB			Dca		855-40093

* Cables are subject to MOQ and leadtimes. Subject to technical changes.

Cable - Single Mode

ORDER INFO	Performance	Construction	EuroClass	Fibre Count	UNS
HT-OM3-12-TB-CCA	OS2	Tight Buffered	Cca	12	855-40127
HT-OM3-12-TB			Dca		855-40120
HT-OM3-24-TB-CCA			Cca	24	855-40130
HT-OM3-24-TB			Dca		855-40121

* Cables are subject to MOQ and leadtimes. Subject to technical changes.

Fibre Patch Leads

LC and SC



LC to LC OM4 Patch Lead



LC to LC OM3 Patch Lead



LC to LC OS2 Patch Lead



SC to SC OM3 Patch Lead



SC to SC OS2 Patch Lead

Product Description

Optical fibre patch leads are a defining factor in ensuring your network performs to the highest level.

Available in multimode and single mode our patch leads are designed for use in permanent connections between active equipment and panels or interconnect/crossconnect between panels.

All HellermannTyton patch leads are supplied as a cross over configuration for duplex as standard. Straight through configuration patch leads are available on request.

Features and Benefits

- Simplex and duplex options available
- 3.0mm buffered fibre optic cable
- Pre-tested with test results supplied
- Available in standard lengths of 1m, 2m, 3m, 5m and 10m
- Bespoke lengths and labelling are available upon request

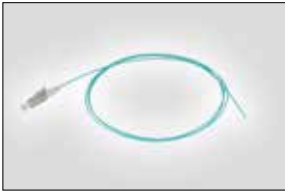
FLCXX M4 - LC SC D M - 10.0M

Cable Termination		Cable Performance		Connector End A		Connector End B		Configuration		Colour	Length
FLCXX	Crossover	M4	OM4	LC	LC	LC	LC	S	Simplex	A-	XX.XM
FLSXX	Straight	M3	OM3	LP	LC/APC	LP	LC/APC	D	Duplex		
		S2	OS2 G652D	SC	SC	SC	SC			M-	Magenta (OM4)
		S7	G657A1	SP	SC/APC	SP	SC/APC			Y-	Yellow (Single Mode)

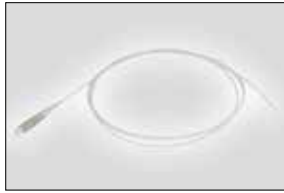
FLCXXM4-LCSCDM-10.0M = LC to SC Magenta OM4 Multimode Duplex Crossover 10 metre Fibre Patch Lead

Fibre Pigtaills

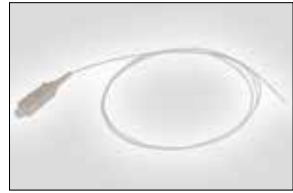
LC and SC



LC OM3 Aqua Pigtail



LC OM3 White Pigtail



SC OS2 White Pigtail

Product Description

Pigtaills are available in both single mode and multimode and are supplied in standard lengths of 1m. Other lengths and fibre types can be supplied on request.

Pigtaills are designed to be spliced onto existing fibre cables, eliminating the need to polish fibre ends on site.

Features and Benefits

- Available in single mode and multimode
- Manufactured to ISO standards
- Pre-terminated connector saves installation time on site
- Standard length 1m
- 900µm tight buffered fibre optic cable
- Pre-tested with test results supplied

FBTX OS2 - LPXX SY - 01.0M

Cable Termination	Cable Performance	Connector End A	Configuration	Colour	Length
FBTX	OM4 OM4	LCXX LC	S Simplex	W- White (Universal)	XX.XM
	OM3 OM3	LPXX LC/APC		A- Aqua (OM3/OM4)	
	OS2 OS2 G652D	SCXX SC		P- Magenta (OM4)	
		SPXX SC/APC		Y- Yellow (OS1)	

FBTXOS2-LPXXSY-01.0M = LC/APC Yellow OS2 Single Mode 1 metre Fibre Pigtail

SC and LC Patch Panels

Simplex, Duplex and Quad



SC Multimode Simplex Patch Panel



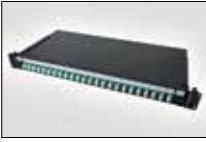
SC Multimode Duplex Patch Panel



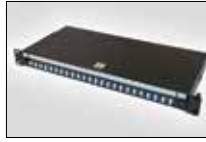
SC Single Mode Simplex Patch Panel



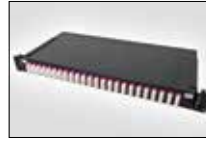
SC Single Mode Duplex Patch Panel



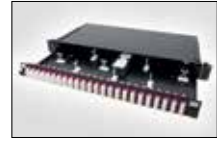
LC Duplex Multimode Patch Panel



LC Duplex Single Mode Patch Panel



LC Quad Multimode Patch Panel



LC Quad Multimode Patch Panel

Product Description

19" rack mountable sliding patch panels are supplied configured to your desired specification as a standard service by our fully trained panel assembly team.

Every panel is supplied with a basic fibre management kit ready for you to splice. Corresponding pigtailed can also be pre-installed upon request. This service is great for utilizing offsite labour saving you time and budget on site.

Features and Benefits

- Factory loaded to your configuration
- Rack snaps included
- Capacity from 4 up to 96 fibres
- Multiple cable entry points
- Fibre Management kit included
- Can be supplied unloaded
- Pigtailed installed upon request

FBPDBKL - LCAP QD - 24V F1 - PT

Prefix	Connectivity	Adaptor Footprint	No. of Adaptors	Fibre Management Kit	Pigtails	
FBPDBKL	LCMM LC Multimode	SX Simplex	04V 4	XX No Kit	Blank No Pigtails	
	LCSM LC/PC Singlemode					DX Duplex
	LCAP LC/APC Singlemode	QD Quad (LC only)	08V 8		F1 Standard FOM Kit*	
	SCMM SC Multimode					12V 12
	SCSM SC/PC Singlemode		16V 16			
	SCAP SC/APC Singlemode					24V 24

FBPDBKL-LCAPQD-24VF1-PT = Fibre Panel with LC/APC Singlemode Quad 24 Adaptors and Standard FOM Kit and Pigtails.

MDU Solutions

designed for the smallest of properties, the largest of properties and everything in between...

MADE TO CONNECT





Pre-Terminated Assemblies

The RapidNet system offers many advantages over a standard site-terminated solution. It can reduce installation times by up to 95% and because it's pre-tested, minimal on-site testing is required once installed. The pre-terminated solution delivers high performance across all fibre cabling types including OM4, OM3 and OS2.

High port densities can be achieved using RapidNet fibre, with MTP connectors providing up to 144 fibres per cassette or up to 576 fibres in 1U of rack space.

12F

12 Fibre
Page 40

The RapidNet 12 fibre solution has been designed to support a wide range of applications including data centres, campus connectivity and disaster recovery sites providing reduced installation times, efficient use of space and high performance. This solution can provide a fibre capacity up to 48 fibres per 1U.

24F

24 Fibre
Page 43

The RapidNet 24 fibre solution has been designed to support a wide range of applications including data centres, campus connectivity and disaster recovery sites providing reduced installation times, efficient use of space and high performance. This solution can provide a fibre capacity up to 96 fibres per 1U.



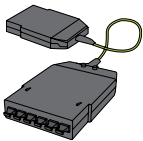
HellermannTyton supply a wide range of MTP connectivity solutions in both pre-terminated and backbone configurations. Contact our sales team to discuss your MTP requirements:

Tel: +44(0)1604 707420
Email: sales@htdata.co.uk
Web: www.htdata.co.uk



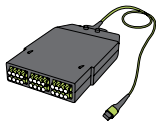
Connection options

The HellermannTyton pre-terminated fibre range is offered in various configurations and options to suit typical deployment requirements of flexibility, performance and optical loss management.



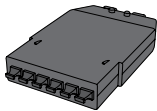
Cassette to Cassette

The cassette to cassette offers localised patching fields at both ends of the link. This configuration is beneficial when there isn't the immediate requirement to utilise all the ports.



Tethered Cassettes

With the cassette providing local patching at one end, the fan out can be connected directly into the active equipment, reducing losses and saving cabinet space.



Transition Cassettes

Transition cassettes are used to convert from multi-fibre to single fibre (MTP to LC) or different fibre count MTP to MTP. In either case they use a standard cassette with a rear MTP connection, ideal for use in either re-configuring existing installed cables or when access and cable management may be limited.



Transition Cable Assemblies

The fan out option removes localised patching at both ends, saving space in the cabinets and reducing optical losses in the link. These cables are offered in various configurations and are particularly suited to applications where the active equipment or hardware at each end is located either in the same cabinet or row.



Fan Out Cable Assemblies

There is a wide range of fan out cable assemblies available, all suitable for the above connection methods and are supplied in various configurations and lengths to suit the optical polarity of the channel.

12 Fibre

LC and SC Cassette Assemblies



12 Fibre OM3 LC Cassette to LC Fan Out



12 Fibre LC Adaptor Mounting Module

OM
4OM
3OS
2

Cassette Assemblies

ORDER INFO	Cable Type	Fibre Count	End A	End B	UNS	
RNFTD12-LCLCM4-10.0M	OM4	12 Core	LC Cassette	LC Cassette	859-21653	
RNFTD12-LCLFM4-10.0M				LC Fan Out	859-21655	
RNFTD12-LCSFM4-10.0M				SC Fan Out	859-21659	
RNFTD12-SCSCM4-10.0M			SC Cassette	SC Cassette	859-21669	
RNFTD12-SCSFM4-10.0M				SC Fan Out	859-21671	
RNFTD12-LCLCM3-10.0M	OM3		12 Core	LC Cassette	LC Cassette	859-20622
RNFTD12-LCLFM3-10.0M					LC Fan Out	859-20799
RNFTD12-LCSFM3-10.0M					SC Fan Out	859-21658
RNFTD12-SCSCM3-10.0M				SC Cassette	SC Cassette	859-20917
RNFTD12-SCSFM3-10.0M					SC Fan Out	859-21253
RNFTD12-LCLCS2-10.0M	OS2	12 Core		LC Cassette	LC Cassette	859-22845
RNFTD12-LCLFS2-10.0M					LC Fan Out	859-22795
RNFTD12-LCSFS2-10.0M					SC Fan Out	859-22770
RNFTD12-SCSCS2-10.0M				SC Cassette	SC Cassette	859-22771
RNFTD12-SCSFS2-10.0M					SC Fan Out	859-22772

Adaptor Mounting Modules

ORDER INFO	Performance	Fibre Count	Adaptor	Colour	UNS
RNAFD06-LCDBG	Multimode	12 Core	LC	Beige	859-21926
RNAFD06-LCDAQ				Aqua	859-23521
RNAFD06-LCDLG				Lime Green	859-23522
RNAFD06-SCDBG			SC	Beige	859-21939
RNAFD06-SCDAQ				Aqua	859-23523
RNAFD06-SCDLG				Lime Green	859-23524
RNAFD06-LCDBL	Single Mode	12 Core	LC	Blue	859-21927
RNAFD06-SCDBL			SC		859-21940
RNAFD06-LCDGN			LC/APC	Green	859-23525
RNAFD06-SCDGN			SC/APC		859-23526

12 Fibre

SC and LC Fan Out Cable Assemblies



6 x 12 Core LC to 6 x 12 Core LC



6 x 12 Core LC to 6 x 12 Core LC



LC to LC

ORDER INFO	Cable Type	Fibre Count	Drawing	End A	End B	UNS
RNFTD12-LFLFM4-10.0M	OM4	12 Core		6 x LC Duplex	6 x LC Duplex	859-22775
RNFTD12-LFLFM3-10.0M	OM3					859-21024
RNFTD12-LFLFS2-10.0M	OS2					859-22780

SC to SC

ORDER INFO	Cable Type	Fibre Count	Drawing	End A	End B	UNS
RNFTD12-SFSFM4-10.0M	OM4	12 Core		6 x SC Duplex	6 x SC Duplex	859-22785
RNFTD12-SFSFM3-10.0M	OM3					859-21735
RNFTD12-SFSFS2-10.0M	OS2					859-22790

24 Fibre

LC and SC Cassette Assemblies



24 Fibre OM3 LC Cassette to LC Fan Out



24 Fibre LC Adaptor Mounting Module



Cassette Assemblies

ORDER INFO	Cable Type	Fibre Count	End A	End B	UNS
RNFTD24-LCLCM4-10.0M	OM4	24 Core	LC Cassette	LC Cassette	859-21654
RNFTD24-LCLFM4-10.0M				LC Fan Out	859-21656
RNFTD24-LCSFM4-10.0M				SC Fan Out	859-21662
RNFTD24-LCLCM3-10.0M	OM3			LC Cassette	859-20624
RNFTD24-LCLFM3-10.0M				LC Fan Out	859-20805
RNFTD24-LCSFM3-10.0M				SC Fan Out	859-21661
RNFTD24-LCLCS2-10.0M	OS2			LC Cassette	859-22337
RNFTD24-LCLFS2-10.0M				LC Fan Out	859-22773
RNFTD24-LCSFS2-10.0M				SC Fan Out	859-22774

Adaptor Mounting Modules

ORDER INFO	Performance	Fibre Count	Adaptor	Colour	UNS
RNAFD12-LCDBG	Multimode	24 Core	LC	Beige	859-21912
RNAFD12-LCDAQ				Aqua	859-23527
RNAFD12-LCMG				Magenta	859-23528
RNAFD12-LCDLG				Lime Green	859-23529
RNAFD12-LCDBL	Single Mode		LC/APC	Blue	859-21913
RNAFD12-LCDGN				Green	859-23530

24 Fibre

SC and LC Fan Out Cable Assemblies



12 x 24 Core LC to 12 x 24 Core LC



12 x 24 Core LC to 12 x 24 Core LC



LC to LC

ORDER INFO	Cable Type	Fibre Count	Drawing	End A	End B	UNS
RNFTD24-LFLFM4-10.0M	OM4	24 Core		12 x LC Duplex	12 x LC Duplex	859-22776
RNFTD24-LFLFM3-10.0M	OM3					859-21266
RNFTD24-LFLFS2-10.0M	OS2					859-22781

SC to SC

ORDER INFO	Cable Type	Fibre Count	Drawing	End A	End B	UNS
RNFTD24-SFSFM4-10.0M	OM4	24 Core		12 x SC Duplex	12 x SC Duplex	859-22786
RNFTD24-SFSFM3-10.0M	OM3					859-21279
RNFTD24-SFSFS2-10.0M	OS2					859-22791

RapidNet Accessories

Panels and Cable Management

Product Description

The RapidNet pre-terminated system offers a great deal of connectivity flexibility across both fibre and copper ranges.

To enhance this flexibility and meet the demands of installers and the various applications using pre-terminated RapidNet, HellermannTyton have developed a number of patch panel and cable management solutions that compliment the RapidNet range.

RapidNet Patch Panel Compatibility

ORDER INFO	U Size	Presentation	Copper Cassette	Port Count	Fibre Cassettes	Fibre Capacity	Rear Manager
RNA6UXX-PA1URS-XX.XX	1U	Flat	6 Port Cassette	24 Port	SC/LC/MTP Cassettes	SC 48 Fibre LC 96 Fibre MTP 1,152 Fibre	RNRCM
RNA6UXX-PA2URS-XX.XX	2U	Flat	6 Port Cassette	48 Port	SC/LC/MTP Cassettes	SC 96 Fibre LC 192 Fibre MTP 2,304 Fibre	RNRCM
RNA6UXX-PB1URS-XX.XX	1U	Flat	6 Port Cassette	24 Port	SC/LC/MTP Cassettes	SC 48 Fibre LC 96 Fibre MTP 1,152 Fibre	Integral
RNA6G6A-PA1URS-XX.XX	1U	Flat	6 Port Cassette	24 Port	N/A	N/A	RNRCM
RNA6UXX-PD4UCN-XX.XX	4U	Flat	6 Port Cassette	96 Port	LC/MTP Cassettes	LC 384 Fibre MTP 4,608 Fibre	Integral



1U 6 Port Cassette Panel

RNA6UXX-PA1URS-XX.XX

Product Description

The RapidNet 6 port Patch Panel accommodates four 6 port copper or fibre cassettes. The panel offers dual labelling fields for each cassette and is supplied with Rack Snap fixings as standard. The RapidNet Cassettes simply push into the panel, snapping in with a push down clip. A fully loaded 1U panel presents 24 Category 6A UTP, Category 6 or Category 5e RJ45 ports.

The RapidNet panel is manufactured from 1.5mm matt black powder coated mild steel to the standard 19" width and has dual labelling fields with a magnifying lens.

The panel is supplied with Rack Snap fixings as standard, panels can also be supplied with Cage Nuts, screw fixings or without fixings if required.



RNA6UXX-PA1URS-XX.XX 1U 6 Port Cassette Panel.

Features and Benefits

- Fits all 19" racks, frames and cabinets
- Supplied with Rack Snaps as standard
- Simple, easy insertion with push down clip
- Accommodates 4 Category 6A UTP, Category 6, Category 5e or fibre cassettes
- Dual labelling fields
- Also available in 2U 48 port configuration

2U 6 Port Cassette Panel

RNA6UXX-PA2URS-XX.XX

Product Description

The RapidNet 6 port Patch Panel accommodates eight 6 port copper or fibre cassettes. The panel offers dual labelling fields for each cassette and is supplied with Rack Snap fixings as standard. The RapidNet Cassettes simply push into the panel, snapping in with a push down clip. A fully loaded 2U panel presents 48 Category 6A UTP, Category 6 or Category 5e RJ45 ports.

The RapidNet panel is manufactured from 1.5mm matt black powder coated mild steel to the standard 19" width and has dual labelling fields with a magnifying lens.

The panel is supplied with Rack Snap fixings as standard, panels can also be supplied with Cage Nuts, screw fixings or without fixings if required.



RNA6UXX-PA2URS-XX.XX 2U 6 Port Cassette Panel.

Features and Benefits

- Fits all 19" racks, frames and cabinets
- Supplied with Rack Snaps as standard
- Simple, easy insertion with push down clip
- Accommodates 8 Category 6A UTP, Category 6, Category 5e or fibre cassettes
- Dual labelling fields
- Also available in 1U 24 port configuration

ORDER INFO	Dimensions			Screening Type	Port Count	U Size	UNS
	H	W	D				
RNA6UXX-PA1URS-XX.XX	44	483	56	Unshielded	4 Cassette	1U	859-30019
RNA6UXX-PA2URS-XX.XX	88	483	56		8 Cassette	2U	859-30034

All dimensions in mm. Subject to technical changes.

1U Rear Cable Management Panel

RNA6UXX-PB1URS-XX.XX

Product Description

HellermannTyton's RapidNet Panel with rear cable management provides support and protection for MTP backbone and fibre cables within a cabinet or patching frame. The panel can also be used with the RapidNet direct terminated fibre solution, RapidNet MTP VHD or UTP copper RapidNet Cassettes, providing additional rear cable management and enabling a 'mix and match' approach between copper and fibre. A range of fixing points are provided in the rear of the panel to secure cables and provide strain relief for the MTP connectors and adapters. 25mm conduit (available as kits) then supports and protects the cables from the panel to the horizontal cable routes. Multiple rear entry points are provided for the conduit tubing to enable maximum flexibility.

The RapidNet panel is manufactured from 1.5mm matt black powder coated mild steel making it rigid and robust. The panel is supplied with Rack Snap as standard, panels can also be supplied with Cage Nuts, screw fixings or without fixings if required. The panel has dual labelling fields with a magnifying lens.



RNA6UXX-PB1URS-XX.XX 1U Rear Cable Management Panel.

Features and Benefits

- Accommodates 4 standard RapidNet Cassettes
- Dual label fields with magnifying lenses
- Supported rear cables
- Multiple cable fixing locations
- Multiple rear entry points
- Vertical cable protection

ORDER INFO	Dimensions			Screening Type	Port Count	U Size	UNS
	H	W	D				
RNA6UXX-PB1URS-XX.XX	44	483	56	Unshielded	4 Cassette	1U	859-30047

All dimensions in mm. Subject to technical changes.



4U Distribution Chassis

RNA6UXX-PB1URS-XX.XX

Product Description

The HellermannTyton 4U Distribution Chassis is designed for use with the RapidNet pre-terminated solution.

The 4U panel accommodates up to 16 RapidNet cassettes covering a range of density requirements from high density 2,304 fibre MTP connections, standard density 384 fibre LC connections or 96 copper ports.

The chassis has integrated front and rear cable management for patch cords, trunks and back bone cables with 8 side cable entry points each with a separate anchor point.

The chassis is fitted with hinged front and rear doors with dedicated labelling fields for simple port and RapidNet loom identification. The front door can be removed to provide ease of access during initial implementation and installation.

Sliding mounting brackets are supplied to allow forward and backward movement to suit the mounting post position within the rack or cabinet.



RNA6UXX-PD4UCN-XX.XX 4U 4U Distribution Chassis.

Features and Benefits

- Fits into standard 19" racks and cabinets
- 4U of vertical space can accommodate up to 16 RapidNet cassettes
- Maximum of 2,304 fibres or 96 copper ports per chassis
- Hinged front and rear doors
- Front and rear labelling for port/loom identification
- Front and rear cable management
- Adjustable mounting brackets to aid positioning within the rack or cabinet

ORDER INFO	Dimensions			Screening Type	Port Count	U Size	UNS
	H	W	D				
RNA6UXX-PD4UCN-XX.XX	176	483	401	Unshielded	16 Cassettes	4U	859-30053

All dimensions in mm. Subject to technical changes.

Non-Flammable Water based Splice Prep and Equipment Maintenance Kit

HT-FPC-FSKT1

Product Description

The Non-Flammable Kit contains the cleaning supplies necessary for splice preparation & maintenance. The Transportable Water Based Fibre Optic Cleaning Kit contains two Fibre Cleaning Liquid (Non-Combustible/Aqueous) 100ml liquids and Lint-Free Wipes to perform the Combination Cleaning process.

Use the swabs and wipes with the Fibre Cleaning Liquid to clean the fusion splicer, especially the mirror and V-groove.

Swabs are also included for cleaning ferrules, alignment sleeves and backplane connections. HT-FPC-WW Fusion Splicer Wet Wipes are included for tool, cable and fibre preparation.

The swabs are packaged in rugged tubes for field operations. The kit bags are made from tough nylon for long life.



HT-FPC-FSKT1.

Features and Benefits

- Non-flammable aqueous cleaner
 - Removes a broad range of soil; dust, oils, soils, complex soils, salts and other contaminants
 - Dissipates static charge, which can attract airborne contaminants
 - Compatible for all fibre optic connectors
- Fibre Cleaning Dry Wipes - 100 Wipes
 - Excellent solvent resistance
 - Excellent particle entrapment
 - High absorbency capacity and rate
 - Low linting
 - Excellent durability

Kit Contents

	HT-FPC-FSKT1
HT-FPC-WW Fusion Splicer Wet Wipes - 50 Wipes	1
HT-FPC-DW Fibre Cleaning Dry Wipes - 100 Wipes	1
HT-FPC-LQNC/100ML Fibre Cleaning Liquid - Non-Combustible/Aqueous - 100ml	2
HT-FPC-SBVG Fusion Splicer V-Groove Swab - Tube/50pcs	1
HT-FPC-SBFM Fusion Splicer Mirror Swab - Tube/15pcs	2
Rugged Red Bag	1

ORDER INFO	Description	Pack Quantity	UNS
HT-FPC-FSKT1	Fusion Splicing Prep and Maintenance Kit 1	50	855-15062

All dimensions in mm unless stated otherwise. Subject to technical changes.

FTTX Fibre Preparation and Cleaning Kits

HT-FPC-FTXKT1 & HT-FPC-FTXKT2

Product Description

In the FTTX Fibre Prep and Cleaning Kit contains the necessary cleaning supplies for making a successful 1.25mm and 2.5mm fibre optic connection. The Kits contain a range of products including the End Face Click Cleaner Tools, Precision Wipes, End Face Cleaning Platform and Fibre Cleaning Liquid and Pen to perform the Combination Cleaning process.

End Face Pens are a non-flammable, water-based cleaning solution that quickly and safely cleans the end face of fibre optic connectors. It also dissipates static charge, which prevents attracting airborne contamination that cling to the end face surfacing. For the best results, use with the DWQBPKC Cleaning Platform and the Combination Cleaning Process.

End Face Click Cleaner Tools are the easy to use cleaning tool for fast and reliable end face cleaning. The End Face Click Cleaners use a mechanism that advances fabric over a cleaning tip with just a short and precise push and click of the tool.

Using the End Face Click Cleaners in combination with the End Face Pen provides for fast, easy and repeatable Combination Cleaning.



HT-FPC-FTXKT1.



HT-FPC-FTXKT2.

Kit Contents

	HT-FPC-FTXKT1	HT-FPC-FTXKT2
HT-FPC-CC125 End Face Click Cleaner 1.25mm	1	1
HT-FPC-CC250 End Face Click Cleaner 2.5mm	0	1
HT-FPC-DW Fibre Cleaning Dry Wipes - 100 Wipes	1	2
HT-FPC-DWQBPKC End Face Dry Wipe Cube Platform - Pocket+Clip - 200 Wipes	1	2
HT-FPC-PNNCA End Face Pen - Non-Combustable/Aqueous - 5g	1	2
HT-FPC-LQNCA/100ML Fibre Cleaning Liquid - Non-Combustable/Aqueous - 100ml	1	2
Rugged Red Bag	1	1

ORDER INFO	Description	Pack Quantity	UNS
HT-FPC-FTXKT1	FTTX Fibre Prep and Cleaning Kit 1	6 pcs.	855-15063
HT-FPC-FTXKT2	FTTX Fibre Prep and Cleaning Kit 2	11 pcs.	855-15064

All dimensions in mm unless stated otherwise. Subject to technical changes.

End Face Click Cleaners

MU, LC, FC, SC and ST

Product Description

The End Face Click Cleaner Tool is the easy to use cleaning tool for fast and reliable end face cleaning. End faces in bulkheads or on cable assemblies are both effortlessly cleaned the first time . . . every time.

The End Face Click Cleaner Tool has an easy to use mechanism that advances fabric over a cleaning tip with just a short push and click of the tool. Using the End Face Click Cleaner Tool with the End Face Pen provides for fast, easy and repeatable Combination Cleaning.



HT-FPC-CC125 - Cleaning tool for MU and LC connectors.



HT-FPC-CC250 - Cleaning tool for FC, SC and ST connectors.

Features and Benefits

- Cleans connectors on back plane and on jumpers
- Used to meet or exceed IEC 61300-3-35, IEC TR62627-01, and Telcordia GR-2923-CORE and SAE Aerospace AIR6031
- Effective for the widest range of contaminants
- Easy to use for quick and reliable cleaning
- Rugged and durable, great for all work sites
- Magnetic backing for easy rack placement
- Up to 800 cleanings per kit

ORDER INFO	Description	Connector Type	Pack Quantity	UNS
HT-FPC-CC125	End Face Click Cleaner 1.25mm	MU and LC	1 pc.	855-15048
HT-FPC-CC250	End Face Click Cleaner 2.5mm	FC, SC and ST	1 pc.	855-15049

All dimensions in mm unless stated otherwise. Subject to technical changes.

End Face Dry Wipes

HT-FPC-DWQB, HT-FPC-DWQBPK, HT-FPC-DWQBPKC

Product Description

The End Face Dry Wipes Cube Cleaning Platforms (DWQB) are the patented Precision Wipe System for cleaning fibre optic end faces. They are self-contained cleaning tools that can be used wet-to-dry for the most thorough end face cleaning possible. The DWQB is convenient and economical for use in field or OEM applications.

Features and Benefits

- Complete fibre optic cleaning system – no refills to buy or investment in expensive mechanisms to maintain
- Effective wet-to-dry Combination Cleaning - for cleaner, use End Face Pen for tough soils, Aqueous End Face Pen for eco-friendly cleaner, and Fibre-Wash NF pen for fast drying non-flammable cleaner.
- Provides the ideal cleaning surface – The DWQB cleaning plate is perfect for outside plant or OEM application
- Convenient size – portable cleaning system easily fits on work benches
- Heavy duty lint-free wiping material – tough enough to remove buffer-gel; soft enough for all end face cleaning. Won't shred or tear
- Patented - U.S Patent Number 6,865,770 and foreign patents



HT-FPC-DWQB.



HT-FPC-DWQB



HT-FPC-DWQBPK



HT-FPC-DWQBPKC

ORDER INFO	Description	Dimensions		Pack Quantity	UNS
		W	H		
HT-FPC-DWQB	End Face Dry Wipe Cube Platform	76	76	200 Wipes	855-15050
HT-FPC-DWQBPK	End Face Dry Wipe Cube Platform - Pocket	35	76	200 Wipes	855-15051
HT-FPC-DWQBPKC	End Face Dry Wipe Cube Platform - Pocket+Clip	35	76	200 Wipes	855-15052

All dimensions in mm unless stated otherwise. Subject to technical changes.

End Face Pen - Non-Combustable

HT-FPC-PNNC

Product Description

The Non-Combustable End Face Pen contains a non-flammable solvent cleaner that quickly and safely cleans the end face of fibre optic connectors, splices and ribbons. It also dissipates static charge, which prevents attracting airborne contamination that cling to the end face surface. The cleaning formulation has fast evaporation and low odour, is plastic safe, residue free, and low VOC.

This non-pressurised container can be easily and safely transported. For best results, use with the End Face Dry Wipe Cube Platform or End Face Click Cleaner Tool and the Combination Cleaning process.



HT-FPC-PNNC End Face Pen - Non-Combustable.

Features and Benefits

- Removes handling soils, dust, oils and airborne contamination
- Non-flammable and low odour
- Residue free, fast evaporating and low VOC
- Dissipates static charge which attract airborne contaminants
- Plastic safe and compatible for all fibre optic connectors
- Approximately 400 end face cleanings per pen

End Face Pen - Non-Combustable/Aqueous

HT-FPC-PNNCA

Product Description

The Non-Combustable/Aqueous End Face Pen contains a non-flammable, water-based cleaning solution that quickly and safely cleans the end face of fibre optic connectors, splices and ribbons. It also dissipates static charge, which prevents attracting airborne contamination that cling to the end face surface.

The cleaning formulation has low odour, is plastic safe, and residue free. Because it is water-based, it has the environmental benefits of low VOC and GWP (Global Warming Potential). This non-pressurised container can be easily and safely transported. For best results, use with the End Face Dry Wipe Cube Platform or End Face Click Cleaner Tool and the Combination Cleaning process.



HT-FPC-PNNCA End Face Pen - Non-Combustable/Aqueous.

Features and Benefits

- Removes a broad range of soils: dust, oils, soils, complex soils, salts and other contaminants
- Residue free, low VOC, low global warming potential (GWP)
- Dissipates static charge which attract airborne contaminants
- Approximately 400 end face cleanings per pen

ORDER INFO	Description	Size	UNS
HT-FPC-PNNC	End Face Pen - Non-Combustable	11g	855-15053
HT-FPC-PNNCA	End Face Pen - Non-Combustable/Aqueous	5g	855-15054

All dimensions in mm. Subject to technical changes.

Fibre Cleaning Liquid

Non-Combustable/Aqueous

HT-FPC-LQNCA/100ML

HT-FPC-LQNCA/1LTR

Product Description

Fibre Cleaning Liquid, available in 100ml or 1litre bottles, contains a non-flammable, water-based cleaning solution that quickly and safely cleans the end face of fibre optic connectors, splices and ribbons. It also dissipates static charge, which prevents attracting airborne contamination that cling to the end face surface.

The cleaning formulation has low odour, is plastic safe, and residue free. Because it is water-based, it has the environmental benefits of low VOC and GWP (Global Warming Potential).

This non-pressurised container can be easily and safely transported. For best results, use with the End Face Dry Wipe Cube Platform or End Face Click Cleaner Tool and the Combination Cleaning process.



HT-FPC-LQNCA/100ML and HT-FPC-LQNCA/1LTR.

Features and Benefits

- Removes a broad range of soils dust, oils, soils, complex soils, salts and other contaminants
- Residue free, low VOC, low global warming potential (GWP)
- Dissipates static charge which can attract airborne contaminants
- Plastic safe and compatible for all fibre optic connectors

Fibre Cleaning Dry Wipes

HT-FPC-DW

Product Description

Fibre Cleaning Dry Wipes consist of 55/45 cellulose/ polyester non-woven fabric which results in low linting compared to cotton. These wipes have excellent absorbency, and contamination entrapment, as well as high strength.

Fibre Cleaning Dry Wipes are ideal as an economical utility wipe for any clean area. The wipes are quarter folded to improve handling and feature a creped pattern for softness and handling.



HT-FPC-DW.

Features and Benefits

- Excellent solvent and dilute acid resistance
- Excellent durability
- Excellent particle entrapment
- High absorbency capacity and rate
- Packaged in a Class 100 environment

ORDER INFO	Description	Pack Quantity	UNS
HT-FPC-LQNCA/100ML	Fibre Cleaning Liquid - Non-Combustable/Aqueous	100ml	855-15057
HT-FPC-LQNCA/1LTR		1 litre	855-15058
HT-FPC-DW	Fibre Cleaning Dry Wipes	100 wipes	855-15056

All dimensions in mm. Subject to technical changes.

End Face Swab

HT-FPC-SB250

Product Description

End Face Swabs are constructed from reticulated 100 pores per inch medical grade foam which features the best open cell structure, providing excellent particle entrapment characteristics.

The foam is thermally bonded to the swab polypropylene handle without using adhesives. These swabs are the most economical and are ideal for general applications.



HT-FPC-SB250.

Features and Benefits

- Traps surface particles while cleaning
- High solvent capacity; holds solvent well
- Fibreless construction does not generate loose fibres or particles
- No adhesives or binders are used in the construction
- Economical for high quantity applications

Fusion Splicer Mirror Swab

HT-FPC-SBFM

Product Description

Fusion Splicer Mirror Swabs consist of polyester knit fabric which is either thermally bonded to the glass filled nylon handle or held in place using a shrink tube.

The swabs are low in non-volatile residue, ionic and particulate contamination, while providing exceptional strength and solvent resistance.



HT-FPC-SBFM.

Features and Benefits

- No edge seamless head design on all swabs
- High strength, durable head
- Low particulate and non-volatile residue contamination
- No adhesives or binders are used in the construction
- Excellent solvent compatibility
- Available Aqua-Prime processed

ORDER INFO	Description	Head Dimensions		Pack Quantity	UNS
		W	L		
HT-FPC-SB250	End Face Swab 2.5mm	3 x 2.5	10.4	50	855-15055
HT-FPC-SBFM	Fusion Splicer Mirror Swab	6.4 x 5.8	10.2	15	855-15059

All dimensions in mm. Subject to technical changes.



Fusion Splicer V-Groove Swab

HT-FPC-SBVG

Product Description

Flat, thin head design is ideal for small precision surfaces. No adhesives or binders, so will not leave residue. Wicking action quickly pulls solvent from surfaces.

The Fusion Splicer V-groove and ferrule cleaning swab has a non-woven polyester head and flexible tip polypropylene handle. They are supplied as 50pcs per tube.



HT-FPC-SB250.

Features and Benefits

- Flattest, thinnest swab available; ideal for small precision surfaces
- Will not leave residue; no adhesives or binders
- Wicking action quickly pulls solvent from surfaces
- Can be used with Electro-Wash Precision Cleaners and the Combination Cleaning Process on hard-to-remove soils
- Available in durable, field-ready, transparent tubes
- RoHS Compliant

ORDER INFO	Description	Head Dimensions		Pack Quantity	UNS
		W	L		
HT-FPC-SBVG	Fusion Splicer V-Groove Swab	3 x 1	11.7	50	855-15060

All dimensions in mm. Subject to technical changes.

Fusion Splicer Wet Wipes

HT-FPC-WW

Product Description

Fusion Splicer Wet Wipes are the conveniently packaged wipes for a variety of applications. Available as pre-saturated wipes with an aqueous cleaning solution, these wipes are soft, low-linting and perfect for cleaning small areas.



HT-FPC-WW.

Features and Benefits

- Perfect for safe travel and easy transportation
- Non-scratching, low-linting, soft and absorbent
- Non-Flammable, Plastic safe
- Compact size ideal for tool kits, cleaning kits, congested work benches and tight work spaces
- Fusion Splicer Wet Wipes features Non-Combustable/ Aqueous Fibre Cleaning Liquid
- RoHS compliant

ORDER INFO	Description	Pack Quantity	UNS
HT-FPC-WW	Fusion Splicer Wet Wipes	50	855-15061

All dimensions in mm. Subject to technical changes.



Out of Rack Connectivity

Solutions for Additional Patching



Product Description

HellermannTyton's Out of Rack connectivity solution, combined with the industry leading RapidNet pre-terminated system, helps address many of the challenges faced by the ever increasing demands on today's data centres – reducing set up and operating costs, increasing flexibility and providing a pathway for future technology as bandwidth requirements increase.

HellermannTyton's Out of Rack connectivity is available in 3 configurations:

3U of RapidNet Ready space for up to 12 RapidNet cassettes, 1U of 19" rackspace (eg: for a rack level switch) with 2U of RapidNet Ready cassette space or 3U of standard 19" space with Rack Snap/cage nut mounting locations. All three options include 2 Zero U RapidNet cassette locations within the 600mm width ie: a total capacity of 3½U.

The Out of Rack is manufactured from black powder coated mild steel and is designed to house the majority of network patching and connectivity above the rack or cabinet.

Features and Benefits

- Available in 3 configuration options:
 - 3U Rack space / RapidNet Ready
 - 2U Rack space / 2U RapidNet Ready
 - 3U RapidNet Ready
- 2 Zero U Cassette Locations
- Adjustable vertical height
- Maximum capacity 60 Copper Ports or 1440 Fibres
- 600mm width for the narrowest server rack
- Single person overhead installation
- Multiple fixing points for 25mm conduit cable management
- Cable anchoring points
- Fits any 50mm pitch basket tray
- Vertical cable management into the rack or cabinet
- Grounding studs for earth bonding



RNAORC3.



RNAORC1.



RNAORC1.

ORDER INFO	Dimensions			Size	UNS
	H	W	D		
RNAORC1	225	590	278	3U RapidNet	854-20024
RNAORC2				1U Rack space / 2U RapidNet	854-20025
RNAORC3				3U Rack space	854-20026

All dimensions in mm. Subject to technical changes.



ZCE - Zone Cabling Enclosure

Lockable Steel Enclosure



Product Description

The Zone Cabling Enclosure from HellermannTyton provides up to 2U of patching space within the 600mm x 600mm area of raised floor, ceiling void or within a riser. The zone cabling enclosure provides support for any standard 19" patch panels or active equipment as well as RapidNet panels for use with the pre-terminated cassette based solution.

The zone cabling enclosure has a hinged and removable top access door along with additional cable entry knockouts and brush strips on two sides to keep out dust and debris.

Internally, the zone cabling enclosure has front and rear cable management to support patch leads and manage bend radii.

The enclosure is the ideal solution for retail, data centre or intelligent building applications.



Zone Cabling Enclosure with top access door.

Features and Benefits

- 2U of rack space supporting 19" patch panels
- Supports RapidNet panels, standard HellermannTyton copper and fibre panels and active equipment
- Installs below a single 600mm x 600mm raised floor tile, ceiling void or risers
- Hinged and removable lid
- Additional cable entry knockouts
- Brush strips on two sides to keep out dust and debris
- Lockable lid for secure access
- Powder coated finish for temperature and humidity protection
- Adjustable mounting ears allow for a forward or recessed mounting position
- Works as part of a Zone Cabling topology

ORDER INFO	Dimensions			Size	Material	Colour	UNS
	H	W	D				
ZCE2UXXXXGY	99.8	492	508	Accepts up to 2U 19" Panels	Powder Coated Mild Steel	Grey	854-20027

All dimensions in mm. Subject to technical changes.



ZTB - Zone Termination Box

12 Way Category 6 PCB



Product Description

The Zone Termination Box (ZTB) is a compact and robust internal consolidation point. The ZTB has been designed to work as part of a Zone Cabling topology which allows for more flexibility in regards to MAC's within a structured cabling network. Alternatively it can be used when converting incoming external grade cable over to internal CPR compliant cable.

As standard, the ZTB benefits from HellermannTyton Category 6 PCB technology (backwards compatible with Category 5e). Designed for high performance and reliability this product forms part of the HellermannTyton system warranty when installed by an accredited HellermannTyton installer.

Available in either Unshielded or Shielded variations both models allow for up to 12 cable lines to be terminated.

The compact size of the ZTB means it can be easily fixed into a variety of small spaces in ceiling voids, raised floor, risers or even under the desk.

The base and lid are made from 1.5mm thick mild steel and is supported by internal steel cross-members located on the PCB trays which ensure the ZTB is strong and robust enough to withstand possible damage within shared utility environments.



Zone Termination Box (ZTB) Removable lid and fixing points

Features and Benefits

- Supports Category 6 and Category 5e
- HellermannTyton's Optimised PCB design
- Supports POE applications
- Available in Unshielded or Shielded
- Allows for up to 12 cable lines to be terminated
- 1.5mm Mild Steel for added strength
- Internal Steel cross-member supports for increased impact resistance
- Compact size to allow for installation in restricted spaces
- Removable lid for ease of termination
- Lockable for security
- Fixing points to allow for installation on walls/risers, in ceilings, floor or under desk
- Grey powder coated finish for humidity and temperature protection
- Brush strips for easy cable entry/exit and debris free operation
- Integral cable anchor points
- Shielded version comes with additional cable clamps to allow for correct shield bonding
- Allows for flexibility within a structured cabling network with future ROI in regards to MAC's
- Port Identification Label

ORDER INFO	Dimensions			Shielding	Material	Colour	UNS
	H	W	D				
ZTB12UC6XX/GY	36	294	138.6	Unshielded	Powder Coated Mild Steel	Grey	854-20028
ZTB12SC6XX/GY				Shielded			854-20029

All dimensions in mm. Subject to technical changes.



ZTB - Modular Zone Termination Box



12 Way – Category 6, 6A, Fibre

Product Description

The Modular Zone Termination Box (ZTB) is a compact and robust internal consolidation point. The ZTB has been designed to work as part of a Zone Cabling topology which allows for more flexibility in regards to MAC's within a structured cabling network.

This modular version of the ZTB allows for the use of HellermannTyton keystone jacks and fibre adaptors, making it easier to configure each box to your bespoke requirements giving even greater flexibility.

Users can choose to have the box loaded with Cat6 UTP HTC or GST keystone jacks, HTC Cat6A shielded jacks or LC duplex / SC simplex fibre adaptors.



Modular ZTB Loaded with 12 x Cat6 UTP Jacks.

Features and Benefits

- Supports Category 6A, Category 6 and Fibre
- Uses HellermannTyton Modular Connectivity
- Supports PoE when using Cat6a/Cat6 HTC Keystone Jacks
- Accepts Shielded HTC and Unshielded GST Jacks
- Accepts up to 12 cable lines
- 1.5mm Mild Steel for added strength
- Internal Steel cross-member supports for increased impact resistance
- Compact size allows for installation in restricted spaces
- Removable lid for ease of termination / installation
- Lockable for security
- Fixings points to allow for installation on walls/risers, in ceilings, floor or under desk
- Grey powder coated finish for humidity and temperature protection
- Brush strips for easy cable entry/exit and debris free operation
- Integral cable anchor points
- Modular design allows user to mix and match desired connectivity i.e. 6x Cat6A STP & 6x LC Duplex OM4
- Port Identification Label

ORDER INFO	Dimensions			Specification	Connectivity	UNS
	H	W	D			
ZTB12HTC6BKXX/GY	36	294	138.6	Cat6 UTP	HTC Tool-Free	854-20033
ZTB12SJA6AXXX/GY				Cat6A FTP	HTC Tool-Free	854-20031
ZTB12LCDBGXXX/GY				Fibre Multimode	LC Duplex	854-20034
ZTB12SCSBGXXX/GY					SC Simplex	854-20035
ZTB12LCDBLXXX/GY				Fibre Singlemode	LC Duplex	854-20036
ZTB12SCSBLXXX/GY					SC Simplex	854-20037

All dimensions in mm. Subject to technical changes.



POD Box

4 and 6 Port



6 Port POD Box assembled with 6 x HTC 6C Angled Adaptors.

Product Description

The HellermannTyton POD box offers flexibility within a Structured Cabling Network. Each POD is assembled with angled U6C adaptors which are compatible with HTC tool-free keystone jacks.

Available in either 4 or 6 port presentations with the choice of 25mm, 28.5mm or 34mm conduit entry points. All POD variations benefit from the same dimensions 215mm(h) x 51mm(d) x 62mm(w) which allows them to easily pass through standard 127mm raised floor grommets.

* HTC Jacks are sold separately.

Features and Benefits

- IK07 Rated
- Assembled with HTC 6C angled adaptors
- Available in 4 or 6 Port Presentations
- Choice of 25mm, 28.5mm, 34mm Conduit Entry Points
- Also available as part of the RapidNet solution
- Compatible with HTC Tool Free Jacks
- Fits through 127mm raised floor grommets
- Integral anchor point for cable bundles
- Port and POD labelling fields
- Secure & temporary fixing points

ORDER INFO	Dimensions			Conduit OD	No. of Ports	Colour	UNS
	H	W	D				
HT-POD-25MM-4P	215	52	62	25mm	4x 6C Ports	Black	854-40284
HT-POD-28MM-4P				28.5mm			854-40285
HT-POD-34MM-4P				34mm			854-40286
HT-POD-25MM-6P				25mm	6x 6C Ports		854-40287
HT-POD-28MM-6P				28.5mm			854-40288
HT-POD-34MM-6P				34mm			854-40289

All dimensions in mm. Subject to technical changes.

Accessories

ORDER INFO	Description	UNS
HTC-C6AS-KJ	HTC Series Cat6A Shielded Tool-Free Jack	852-40012
HTC-C6S-KJ	HTC Series Cat6 Shielded Tool-Free Jack	852-25194
HTC-C6U-KJ	HTC Series Cat6 Unshielded Tool-Free Jack	852-25196
LBRKT25/B	Mounting Bracket - 25mm	854-40280
LBRKT32/B	Mounting Bracket - 32mm	854-40281



Triple and Single Floor Boxes

RNSFB-3-V2 and RNSFB-1-V2



Product Description

The RapidNet Floor Box is designed to house the RapidNet Cassette away from the comms cabinet and provides a good “to the desk” solution.

Available in a triple cassette or single cassette version, the RapidNet floor box can take up to three RapidNet Cassettes.

The boxes can be fixed to the floor or under the floor using several fixing points. They are manufactured from powder coated mild steel and have dual magnified labelling fields for easy port identification.



RapidNet Floor Boxes (triple and single shown)

Features and Benefits

- Holds 1-3 cassettes
- Can be used under the floor
- Can be secured to the floor via several fixing points
- Dual labelling fields

Zero U Bracket

RN1CZUB

Product Description

The RapidNet Zero U bracket allows you to efficiently create a consolidation point as part of a zone cabling strategy.

The bracket is designed to fix onto the side a basket tray and allows for one single RN cassette to be inserted, this could be a 6 port Cat6 or Cat6A cassette or Fibre cassette.

This solution is ideal for running additional links where containment may be at capacity or for creating simple cable drops in designated zones.



RN1CZUB.

Features and Benefits

- RapidNet Cassette compatible
- Accepts both RapidNet copper or Fibre Cassettes
- Fixes onto standard basket tray
- Adds flexibility to your network

ORDER INFO	Dimensions			Capacity	Material	Colour	UNS
	H	W	D				
RNSFB-1-V2	53	183	200	1 Cassette	Powder Coated Mild Steel	Black	859-35427
RNSFB-3-V2	53	435	301	3 Cassettes			859-35064
RN1CZUB	88	120	N/A	1 Cassette			859-38380

All dimensions in mm. Subject to technical changes.



HTC Series Mounting Hardware

Faceplates, Modules, Blanks & Back Boxes



Mounting Hardware Selection

Product Description

The HTC Series of mounting hardware has been designed to complement HellermannTyton's new HTC Series Category 6A and Category 6 connectivity product lines. This range features a full suite of single and double gang faceplates in a variety of styles compatible with all blanks, modules and backboxes.

Features and Benefits

- Made from ABS
- Faceplates available in single & double gang
- Colour Consistent range
- Variety of Faceplate styles
- Fixing screws inclusive were applicable
- Plastic free packaging
- Bulk packed to reduce carbon footprint



Faceplates



Angled Modules



Blanks



Back Boxes

ORDER INFO	Outlet Type	Dimensions			UNS
		H	W	D	
HTC-FP1GOS30/WH	Office Single Gang Euro Faceplate (White)	86	86	9	854-35812
HTC-FP2GOS30/WH	Office Double Gang Euro Faceplate (White)	86	146	9	854-35811
HTC-FP1GOS30/DDA	Office Single Gang Euro Faceplate (Grey)	86	86	9	854-35810
HTC-FP2GOS30/DDA	Office Double Gang Euro Faceplate (Grey)	86	146	9	854-35809
HTC-FP1GFL30/WH	Flat Single Gang Euro Faceplate	86	86	10	854-35816
HTC-FP2GFL30/WH	Flat Double Gang Euro Faceplate	86	146	10	854-35815
HTC-FP1GBV30/WH	Bevelled Single Gang Euro Faceplate	86	86	15	854-35818
HTC-FP2GBV30/WH	Bevelled Double Gang Euro Faceplate	86	146	15	854-35817
HTC-BB1G2710/WH	Single Gang Back Box	86	86	37	854-35806
HTC-BB1G3710/WH	Single Gang Back Box	86	86	37	854-35808
HTC-BB2G3710/WH	Double Gang Back Box	86	146	37	854-35807
HTC-EMA50/WH	Modular Angled Euro Adaptor	50	25	32	854-35819
HTC-6CA50/WH	Modular Angled U6C Adaptor	38.5	25	30	854-35820
HTC-FPBH100/WH	Euro Half Blank	50	25	5	854-35814
HTC-FPBQ100/WH	Euro Quarter Blank	50	12.5	5	854-35813

All dimensions in mm. Subject to technical changes.

Bringing LAN products to life in AR

Your perfect product information tool.

MADE TO CONNECT

NEW APP!



Download our NEW Mobile App

The HT Connect App from HellermannTyton is the perfect product information tool.

Using Augmented Reality (AR) technology through your mobile phone or tablet, you can see a number of selected products from the HellermannTyton product range in a live environment.

The app is designed to give you a closer look at our products as well as giving you additional information including datasheets, installation guides, installation videos and links to website.





Panel Accessories

Cable Management & Blanks



HTC-CM1U5R/BK



1U-BP/BK



1CTLB-BRUSH/BK



RNRCM

ORDER INFO	Outlet Type	Size	UNS
HTC-CM1U5R/BK	5 Ring Horizontal Cable Manager	1U	854-05162
1U-BP/BK	19" Blanking Panel	1U	854-10002
1CTLB-BRUSH/BK	19" Brush Strip Panel	1U	854-05007
RNRCM	1U Rear Cable Manager	1U	859-35056



Conduit

Conduit and Accessories



Fixing bracket (shown with Conduit and Gland)



GL003 Gland and Locknut

ORDER INFO	Item	Colour	Size	UNS
GL002	Gland & Locknut	Black	20mm	166-21025
GL003			25mm	166-21026
GL005			32mm	166-21006
LBRKT25/BK	Fixing Bracket for Flexible Conduit		For 20/25mm gland	854-40280
LBRKT32/BK			For use with 32mm gland	854-40281



Application Tools

Cable Scout+



CS-SB



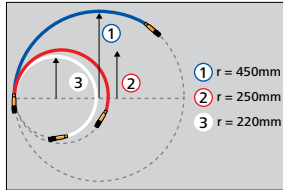
CS-SD



CS-SH



Rod Selection



CS Marginal Bend Radii

Product Description

Cable Scout+ is a professional cable routing tool which enables installers to easily route cables, saving time, even with the most challenging installations. The rods are manufactured from high quality Glass Reinforced Plastic (GRP), which enables a load carrying capacity of up to 200 kg. Cable Scout+ offers a range of features which allows the installer to illuminate, grip, inspect and retrieve by using the range of accessories. Cable Scout+ is supplied in a useful durable bag which contains the rods and accessories all in one place.

Features and Benefits

- Professional cable installation tool
- Enables time savings to be achieved even with challenging installations
- Rods manufactured from high quality Glass Reinforced Plastic (GRP)
- Load carrying capacity of 200 kg
- Range of accessories enabling the installer to illuminate, grip inspect and retrieve
- Rods & accessories contained in a useful durable storage bag

ORDER INFO	Kit	Rods	Accessories	UNS
CS-SB	Basic Set	10x 1m White	15cm Flexi Lead, Gender Changer, Tuff Hook, Mini Eye	897-90000
CS-SD	Deluxe Set	2x 1m White 6x 1m Red 2x 1m Blue	15cm Flexi Lead, Split Ring, Gender Changer, Tuff Hook Mini Eye, Domed Bullet, Flat Bullet, Beam, Single Magnet	897-90001
CS-HS	Handy Set	1x 40cm White 2x 40cm Red 1x 40cm Blue	40cm Flexi Lead, Domed Bullet, Mini Hook, Mini Eye	897-90003

ORDER INFO	Accessory	Flexibility	OD	UNS
CS-P6	1 Pair x 1m Blue	Strong	6mm	897-90007
CS-PN	1 Pair x 1m Nylon	Fully Flexible	5mm	897-90008
CS-P5	1 Pair x 1m Red	Medium	5mm	897-90006
CS-P4	1 Pair x 1m White	Flexible	4mm	897-90005



Application Tools

Cable Scout+ Accessories



CS-SA



CS-ACG0415



CS-AW



CS-CPL

Product Description

Cable Scout+ is supplied with a range of useful standard accessories. Additional accessories can be purchased separately. Cable Grips are designed to grip objects and provide reliable and time saving method of securing cables & pipes to the rods. Just open the grip by compressing the braid, push the grip over the cable or pipe and release the grip, which will contract and establish a tight grip on the cable or pipe to the rod set.

Features and Benefits

- Accessory kit includes a lot of useful tools
- User can inspect, illuminate and retrieve
- Cable grips allows a very fast way to pull cables
- Whisk glides smoothly over obstacles
- LED Beam brings light into the dark
- Strong magnet lifts metallic tools up to 2.5 kg weight

ORDER INFO	Type	Item	UNS
CS-SA-PVC-CL	Accessory Kit	15cm Flexi Lead, Gender Changer, Mini Hook, Tuff Hook, Mini Eye, Split Ring, Round Bullet, Flat Bullet, Single Magnet, Chain	897-90004
CS-ACG0415	Cable Grips	Suitable for diameter 0.4 - 1.5cm	897-90026
CS-AW	Whisk	Enables cables to glide over rough and uneven surfaces	897-90018
CS - CPL-H2o/DIV-CL	Lubricant	Cable Pulling Lubricant 1000ml	897-90031



Appendix

Notes

A large grid of small dots for taking notes, consisting of approximately 30 columns and 40 rows.



A large grid of small dots for writing notes, consisting of approximately 25 columns and 40 rows of dots.


Europe


 **HellermannTyton GmbH – Austria**
Rembahnweg 65
1220 Vienna
Tel.: +43 12 59 99 55-0
Fax: +43 12 59 99 11
Email: office@HellermannTyton.at
www.HellermannTyton.at

 **HellermannTyton – Bulgaria**
Email: officeBG@HellermannTyton.at
www.HellermannTyton.at

 **HellermannTyton – Czech Republic**
Email: officeCZ@HellermannTyton.at
www.HellermannTyton.cz

 **HellermannTyton – Denmark**
Industrivej 44A, 1.
4000 Roskilde
Tel.: +45 702 371 20
Fax: +45 702 371 21
Email: htdk@HellermannTyton.dk
www.HellermannTyton.dk

 **HellermannTyton – Finland**
Ayrinte 12 B
01510 Vantaa
Tel.: +358 9 8700 450
Fax: +358 9 8700 4520
Email: myynti@HellermannTyton.fi
www.HellermannTyton.fi


 **HellermannTyton S.A.S. – France**
2 rue des Hétries - CS 80543
78197 Trappes Cedex
Tel.: +33 1 30 13 80 00
Fax: +33 1 30 13 80 60
Email: info@HellermannTyton.fr
www.HellermannTyton.fr

 **HellermannTyton GmbH – Germany**
Großer Moorweg 45
25436 Tormesch
Tel.: +49 4122 701-0
Fax: +49 4122 701-400
Email: info@HellermannTyton.de
www.HellermannTyton.de


 **HellermannTyton KFT – Hungary**
Kisfaludy u. 13
1044 Budapest
Tel.: +36 1 369 4151
Fax: +36 1 369 4151
Email: officeHU@HellermannTyton.at
www.HellermannTyton.hu

 **HellermannTyton Ltd – Ireland**
Unit A5 Cherry Orchard
Business Park
Ballyfermot, Dublin 10
Tel.: +353 1 626 8267
Fax: +353 1 626 8022
Email: sales@HellermannTyton.ie
www.HellermannTyton.ie


 **HellermannTyton S.r.l. – Italy**
Via Visco, 3/5
35010 Limena (PD)
Tel.: +39 049 767 870
Fax: +39 049 767 985
Email: info@HellermannTyton.it
www.HellermannTyton.it

 **HellermannTyton B.V. – Belgium/Netherlands**
Vanadiumweg 11 C
3812 PX Amersfoort
Tel.: +31 33 460 06 90
Fax: +31 33 460 06 99
Email (NL): info@HellermannTyton.nl
Email (BE): info@HellermannTyton.be
www.HellermannTyton.nl
www.HellermannTyton.be

 **HellermannTyton AS – Norway**
Nils Hansens vei 13
0667 Oslo
Tel.: +47 23 17 47 00
Fax: +47 22 97 09 70
Email: firmapost@HellermannTyton.no
www.HellermannTyton.no

 **HellermannTyton Sp. z o.o. – Poland**
Kotulnia 111
62-400 Słupca
Tel.: +48 63 2237 111
Fax: +48 63 2237 110
Email: info@HellermannTyton.pl
www.HellermannTyton.pl

 **HellermannTyton – Romania**
Email: officeRO@HellermannTyton.at
www.HellermannTyton.at

 **OOO HellermannTyton – Russia**
40/4, Pulkovskoe road
BC Technopolis Parkovo, office A 8081
196158, St. Petersburg
Tel.: +7 812 386 00 09
Fax: +7 812 386 00 08
Email: info@HellermannTyton.ru
www.HellermannTyton.ru

 **HellermannTyton – Slovenia**
Branch Office Ljubljana
Podružnica Ljubljana, Ukmarjeva 2
1000 Ljubljana
Tel.: +386 1 433 70 56
Fax: +386 1 433 63 21
Email: officesi@HellermannTyton.at
www.HellermannTyton.si

 **HellermannTyton España s.l. – Spain / Portugal**
Avenida de la Industria 37 2º 2
28108 Alcobendas, Madrid
Tel.: +34 91 661 2835
Fax: +34 91 661 2368
Email: HellermannTyton@HellermannTyton.es
www.HellermannTyton.es

 **HellermannTyton AB – Sweden**
Isafjordsgatan 5
16440 Kista
Tel.: +46 8 580 890 00
Fax: +46 8 580 348 02
Email: kundsupport@HellermannTyton.se
www.HellermannTyton.se

 **HellermannTyton Engineering GmbH – Turkey**
Saray Mah. Dr. Adnan Büyükdiz Cad. No:4
Akkom Office Park 2. Blok. Kat: 10
34768 Umranıye-Istanbul
Tel.: +90 216 687 03 40
Fax: +90 216 250 32 32
Email: info@HellermannTyton.com.tr
www.HellermannTyton.com.tr


 **HellermannTyton Data Ltd – UK**
Waterside House, Edgar Mobbs Way
Northampton NNS 5JE
Tel.: +44 1604 707 420
Fax: +44 1604 705 454
Email: sales@htdata.co.uk
www.htdata.co.uk

 **HellermannTyton Ltd – UK**
William France Road
Plymouth International Medical
and Technology Park
Plymouth, Devon PL6 5WR
Tel.: +44 1752 701 261
Fax: +44 1752 790 058
Email: info@HellermannTyton.co.uk
www.HellermannTyton.co.uk

 **HellermannTyton Ltd – UK**
Sharston Green Business Park
1 Robeson Way
Altrincham Road, Wythenshawe
Manchester M22 4TY
Tel.: +44 161 947 2200
Fax: +44 161 947 2220
Email: sales@HellermannTyton.co.uk
www.HellermannTyton.co.uk

 **HellermannTyton Ltd – UK**
Cley Road, Kingwood Lakeside
Cannock, Staffordshire
WS11 8AA
Tel.: +44 1543 728282
Fax: +44 1543 728284
Email: info@HellermannTyton.co.uk
www.HellermannTyton.co.uk

Middle East

 **HellermannTyton – UAE**
Email: info@HellermannTyton.ae
www.HellermannTyton.ae

North America

 **HellermannTyton – Canada**
Tel.: +1 905 726 1221
Fax: +1 905 726 8538
Email: sales@HellermannTyton.ca
www.HellermannTyton.ca

 **HellermannTyton – Mexico**
Tel.: +52 333 133 9880
Fax: +52 333 133 9861
Email: info@HellermannTyton.com.mx
www.HellermannTyton.com

 **HellermannTyton – USA**
Tel.: +1 414 355 1130
Fax: +1 414 355 7341
Email: corp@htamericas.com
www.HellermannTyton.com

South America

 **HellermannTyton – Argentina**
Tel.: +54 11 4754 5400
Fax: +54 11 4752 0374
Email: ventas@HellermannTyton.com.ar
www.HellermannTyton.com.ar

 **HellermannTyton – Brazil**
Tel.: +55 11 4815 9000
Fax: +55 11 4815 9030
Email: vendas@HellermannTyton.com.br
www.HellermannTyton.com.br

Asia-Pacific

 **HellermannTyton – Australia**
Tel.: +61 2 9525 2133
Fax: +61 2 9525 2495
Email: cservice@HellermannTyton.com.au
www.HellermannTyton.com.au

 **HellermannTyton – China**
Tel.: +86 510 8528 2536
Fax: +86 510 8528 2731
Email: cservice@HellermannTyton.com.cn
www.HellermannTyton.com.cn


 **HellermannTyton – Hong Kong**
Tel.: +852 2831 9090
Fax: +852 2832 9381
Email: cservice@HellermannTyton.com.hk
www.HellermannTyton.com.hk


 **HellermannTyton – India**
Tel.: +91 120 419 3384
Email: cservice@HellermannTyton.co.in
www.HellermannTyton.co.in

 **HellermannTyton – Japan**
Tel.: +81 3 5790 3111
Fax: +81 3 5790 3112
Email: mkt@hellermanntyton.co.jp
www.HellermannTyton.co.jp

 **HellermannTyton – Republic of Korea**
Tel.: +82 32 833 8012
Fax: +82 32 833 8013
Email: cservice@HellermannTyton.co.kr
www.HellermannTyton.co.kr

 **HellermannTyton – Philippines**
Tel.: +63 2 752 6551
Fax: +63 2 752 6553
Email: cservice@HellermannTyton.com.ph
www.HellermannTyton.com.ph

 **HellermannTyton – Singapore**
Tel.: +65 6 386 1919
Fax: +65 6 752 2527
Email: cservice@HellermannTyton.sg
www.HellermannTyton.sg

 **HellermannTyton – Thailand**
Tel.: +662 237 6702 / 266 0624
Fax: +662 266 8664
Email: cservice@HellermannTyton.co.th
www.HellermannTyton.co.th

Africa

 **HellermannTyton – South Africa**
Tel.: +27 11 879 6600
Fax: +27 11 879 6603
Email: jhb.sales@Hellermann.co.za
www.HellermannTyton.co.za

HellermannTyton

HellermannTyton Data Ltd – UK

Waterside House,
Edgar Mobbs Way
Northampton NNS 5JE
Tel.: +44 1604 707 420
Fax: +44 1604 705 454
Email: sales@htdata.co.uk
www.htdata.co.uk

Distribution Partner Details: