

ABOUT BARE CONDUCTIVE

Bare Conductive is at the intersection of materials, design and technology.

Electric Paint is an electrically conductive paint which makes it possible to draw a circuit, cold solder a component or turn any surface into a sensor.

The **Touch Board**, **Pi Cap** and **Light Up Board** can transform **Electric Paint** sensor data into sound, light or information in the cloud.

Our **Kits** and **Packs** provide the context, instructions and project-focused outcomes for these future-facing platforms, regardless of experience level.

All of our products and communication are carefully designed to appeal to a wide community of designers, artists, engineers, students, educators and professionals. This range of engagement is the key to our success and has established an open R&D platform upon which future products and applications are being built.

INDEX

MATERIAL

Electric Paint® 10ml	p.3
Electric Paint® 50ml	p.4
Electric Paint® 1L	p.5

HARDWARE

Printed Sensors	p.6
Touch Board®	p.7
Pi Cap	p.8
Light Up Board	p.9

KITS

Electric Paint Circuit Kit	p.10
Electric Paint Lamp Kit	p.11
Touch Board Starter Kit	p.12
Touch Board Pro Kit	p.13
Interactive Wall Kit	p.14

PACKS

Electric Paint Circuit Pack	p.15
Touch Board Workshop Pack	p.16

The most viewed brand
video on **MASHABLE**
with **76 million views**.

Electric Paint® 10ml / SKU-0018

Draw, paint and create with electronics

Great item for:

The curious, the hobbyist, the innovator, the tinkerer, the technologist, the artist



Bare Conductive's **Electric Paint** is just like any other water-based paint, except that it conducts electricity! This means that you can paint wires or sensors directly onto almost any material around you, including paper, wood, plastic and glass.

The **Electric Paint** 10ml Tube is perfect for small scale projects where detail is important, for painting or soldering.

Product Features

- Works on multiple surfaces
- Conducts electricity when dry
- Paint, stencil or screen print
- Cold solder and repair devices
- Nontoxic and solvent free
- Water soluble
- Seal with water-based paints
- Air-drying
- Works on multiple surfaces
- Dispenses up to 5m



Electric Paint® 50ml / SKU-0216

Print, paint and create with electronics

Great item for:

The curious, the hobbyist, the innovator, the tinkerer, the technologist, the artist



Bare Conductive's **Electric Paint** is just like any other water-based paint, except that it conducts electricity! Use it to paint wires or sensors directly onto almost any material such as paper, wood, acrylic and textiles.

Electric Paint can be used like any other water-based paint, which makes it great for applications involving painting with a paintbrush, stenciling or screen printing.

Product Features

- Conducts electricity when dry
- Paint, stencil or screen print
- Nontoxic and solvent free
- Water soluble
- Seal with water-based paints
- Dries at room temperature
- Works on multiple surfaces
- Screen print up to 0.8m²



Electric Paint® 1L / SKU-0308

Print, paint and create with electronics

Great item for:

The professional, the engineer,
the innovator, the designer,
the technologist, the artist



Bare Conductive's **Electric Paint** is just like any other water-based paint, except that it conducts electricity. Use it to print or paint sensors directly onto almost any material such as paper, wood, acrylic and textiles.

Electric Paint 1L is an ideal product for large scale installations and projects requiring substantial coverage or quantities.

Product Features

- Conducts electricity when dry
- Paint, stencil or screen print
- Nontoxic and solvent free
- Water soluble
- Seal with water-based paints
- Dries at room temperature
- Works on multiple surfaces
- Cover up to 16m²

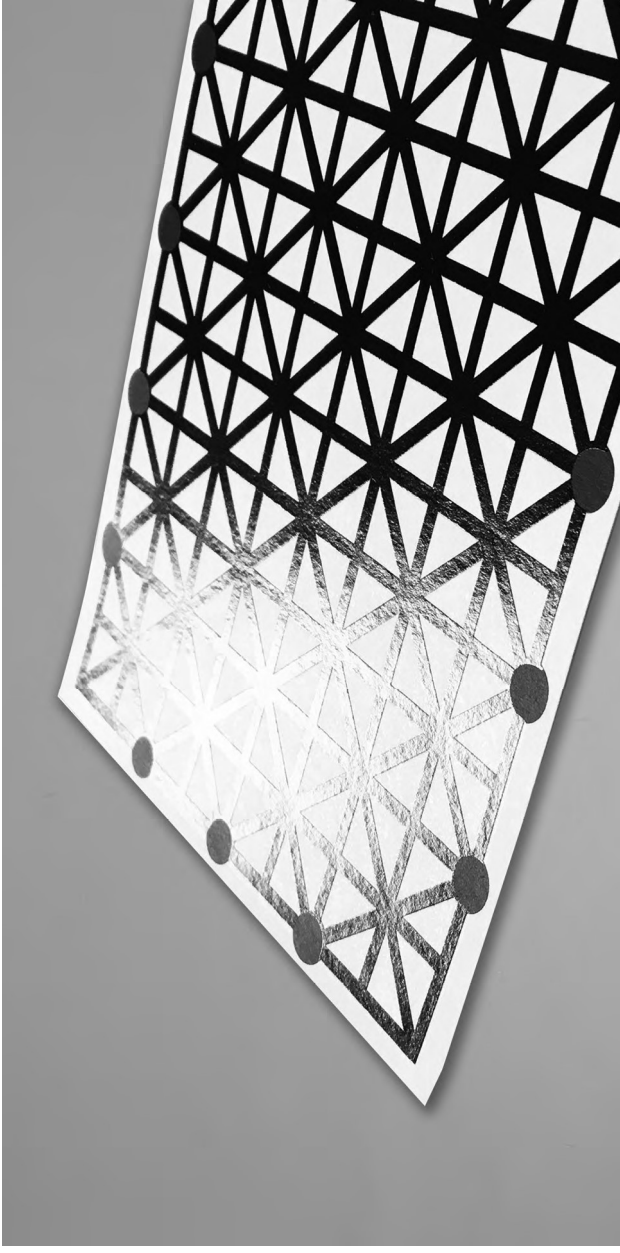
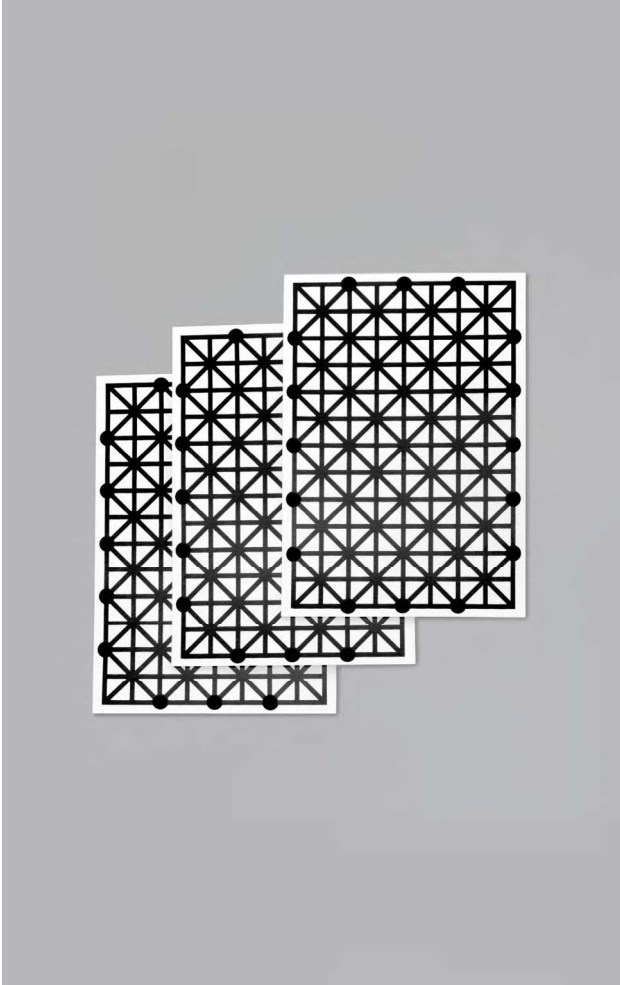


Printed Sensors Set of 3 / SKU-7000

Prototype-ready sensors

Great item for:

The engineer, the hobbyist,
the innovator, the tinkerer,
the technologist, the artist



Making sensors just got easier. Integrate touch sensors and prototype with printed electronics in any project. Printed using **Electric Paint**, these paper sensors have been sealed with a clear coating to prevent smudging.

Use them with the **Touch Board**, **Pi Cap** or **Light Up Board** to create touch sensors.

Product Features

- 3 x A5 Printed Sensors
- Printed with Electric Paint
- Sealed with smudge-proof coating
- 16 exposed connection points
- Optimized pattern for sensitivity
- Touch and distance sensing
- Flexible and foldable

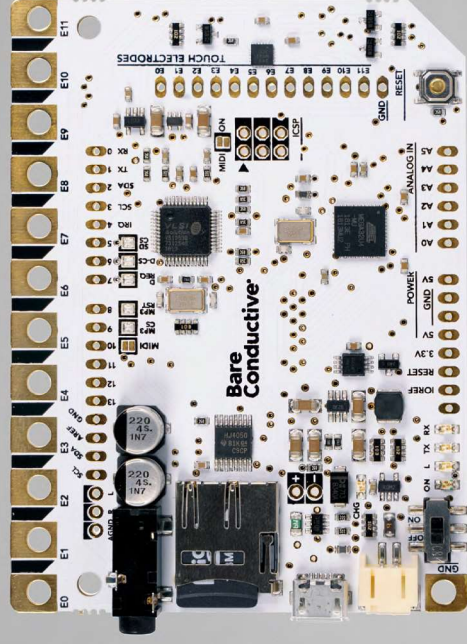


Touch Board / SKU-5013

Turn touch into sound, light or data

Great item for:

The engineer, the innovator,
the hobbyist, the tinkerer,
the technologist, the Arduino lover



One tool, a million possibilities! The **Touch Board** makes any project interactive.

Create sensors with the Touch Board's 12 electrodes and trigger sounds through its MP3 player, or on-board MIDI. Make surfaces and objects interactive or smart by turning them into touch or proximity sensors. If you can do something with an Arduino, you can do it (and more) with the Touch Board.

Product Features

- Capacitive touch and distance sensing
- Arduino-compatible
- No programming required
- Code and libraries for the Arduino IDE
- MP3 Player / MIDI device
- MicroSD card socket
- Standard 3.5mm audio jack
- LiPo battery charger
- USB HID compatible
- USB MIDI compatible (example code for Ableton live)
- USB CDC compatible (example code for MAX)

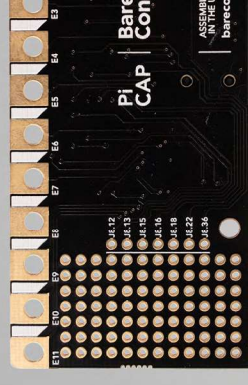
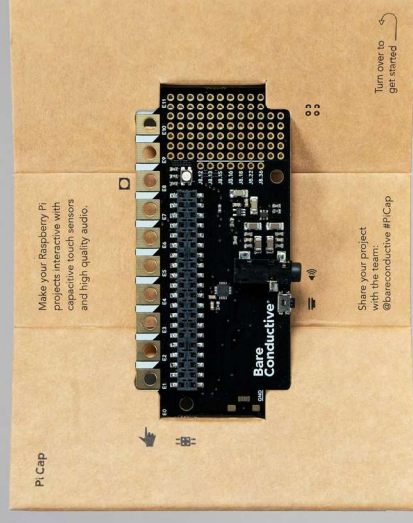
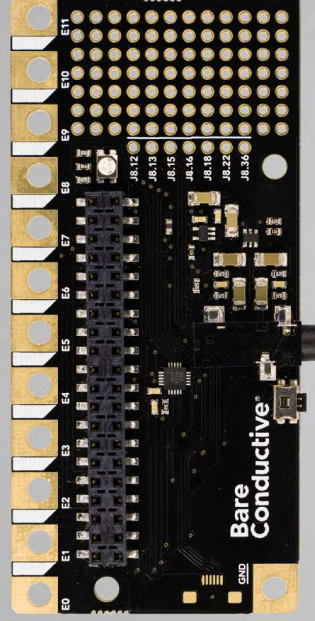
* MicroSD card included. The Touch Board will work with any microSD card up to 32GB

Pi Cap / SKU-6515

Connect your Pi to the physical world

Great item for:

The engineer, the innovator,
the hobbyist, the tinkerer,
the technologist, the Pi lover



High resolution, tunable touch and distance sensors for your Raspberry Pi. The **Pi Cap** adds precise capacitive touch, proximity sensing and high quality audio to your Raspberry Pi.

Create sensors by connecting **Electric Paint** or anything conductive to one of the 12 Pi Cap's electrodes to control audio, video or connect to the internet. Our Raspbian package contains code examples for C++, Python and Node.js.

Product Features

- Touch and distance sensing
- High quality audio output
- Tutorials to help you get started
- Powerful Python, C++ and Node.js libraries and examples
- User-programmable RGB LED
- Multi function button
- Prototyping area with GPIO breakout
- Compatible with Raspberry Pi A+, B+, Zero (or any Pi with a 40 pin GPIO connector)

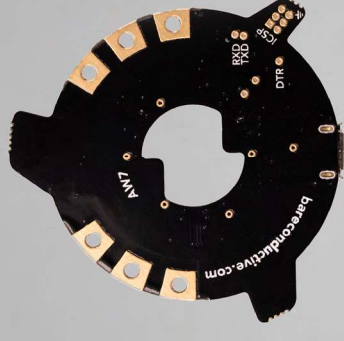
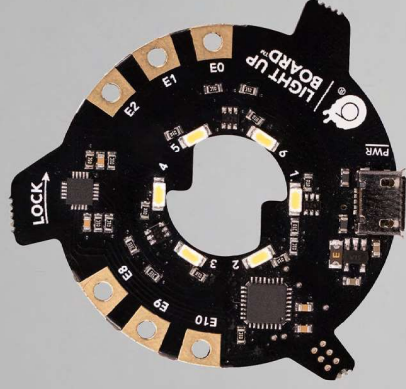


Light Up Board / SKU-1312

Trigger light with capacitive touch and proximity sensors

Great item for:

The engineer, the hobbyist, the innovator, the tinkerer, the technologist, the artist



The **Light Up Board** comes pre-programmed with six different light settings to create touch and distance sensors to trigger light.

With six, neutral white LED lights, and six gold plated electrodes on a super-thin and circular PCB, you can choose between touch, dimmer or proximity interaction modes, as well as three different light modes; candle light, spin and dice mode.

Product Features

- Capacitive touch sensing
- Distance sensing
- Six bright white LEDs
- Six pre-programmed modes
- Easy to twist locking mechanism
- Powered by USB
- No programming required

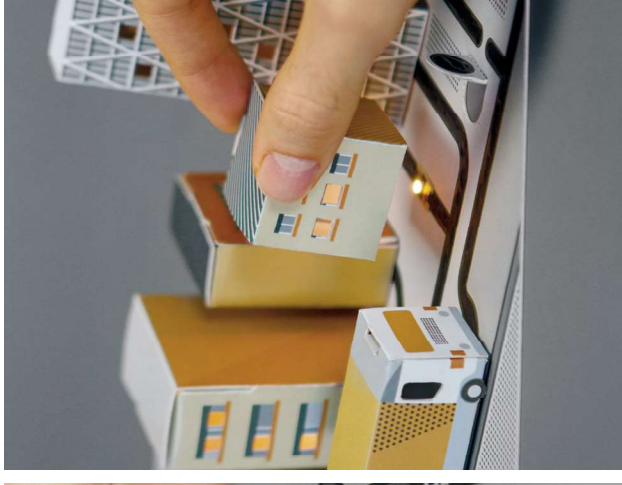
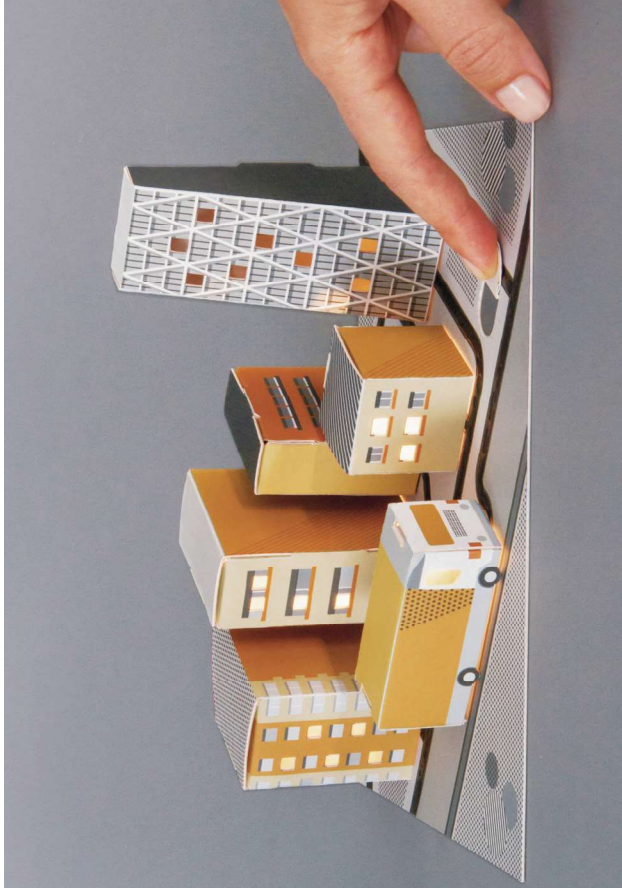


Electric Paint Circuit Kit / SKU-1510

Make circuits with conductive paint

Great item for:

The curious, the innovator, the hobbyist, the tinkerer, the artist, the builder, the technologist



Draw circuits and fold paper templates to bring a miniature paper city to life with the **Electric Paint Circuit Kit**.

The **Electric Paint Circuit Kit** includes with everything you need to create a paper city; an **Electric Paint** 10ml tube to draw your circuit, a base and pre-created house templates, LEDs, and easy to follow instructions to help you put it all together. Get a taste for printed electronics with this fun 20 minute activity.

Included in this kit*

- 1 x Electric Paint 10ml Tube
- 5 x LED carrier board
- 1 x Card base template
- 6 x Assorted 3D objects to fold

*9 Volt battery not included.

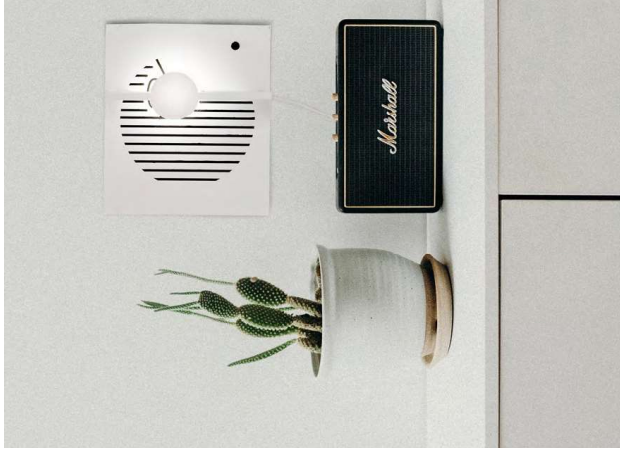


Electric Paint Lamp Kit / sku-1107

Transform paper into light

Great item for:

The doer, the thinker, the designer,
the homeware lover, the trendy,
the sophisticated



Make a choice of three paper lamps - no tools or programming skills needed. Just paint, plug and play!

The **Electric Paint Lamp Kit** is easy to use and makes a perfect gift. The Touch, Dimmer, and Proximity lamps all show off different aspects of **Electric Paint** and the **Light Up Board**. Perfect for the home, office or workshop.

Included in this kit*

- 1 x Electric Paint 10ml Tube
- 1 x Light Up Board
- 1 x Instruction Test sheet
- 1 x Pre-cut & scored templates
- 1 x Micro USB cable

* Power Supply not included

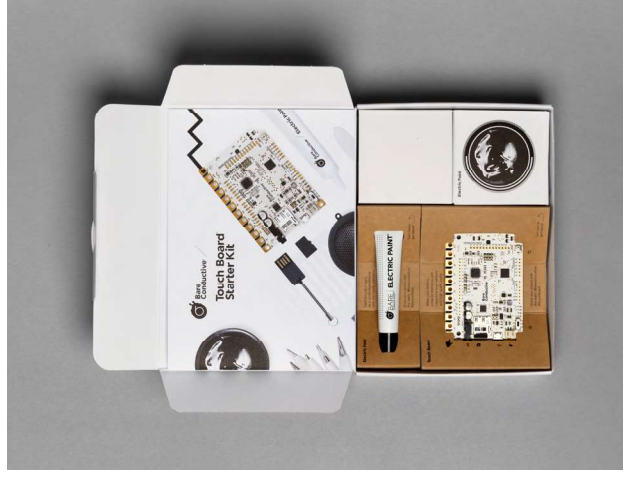
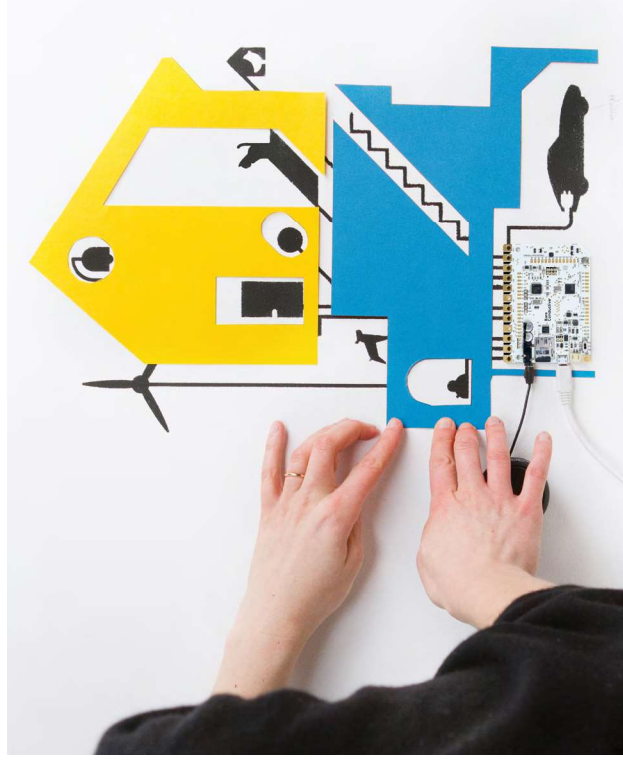
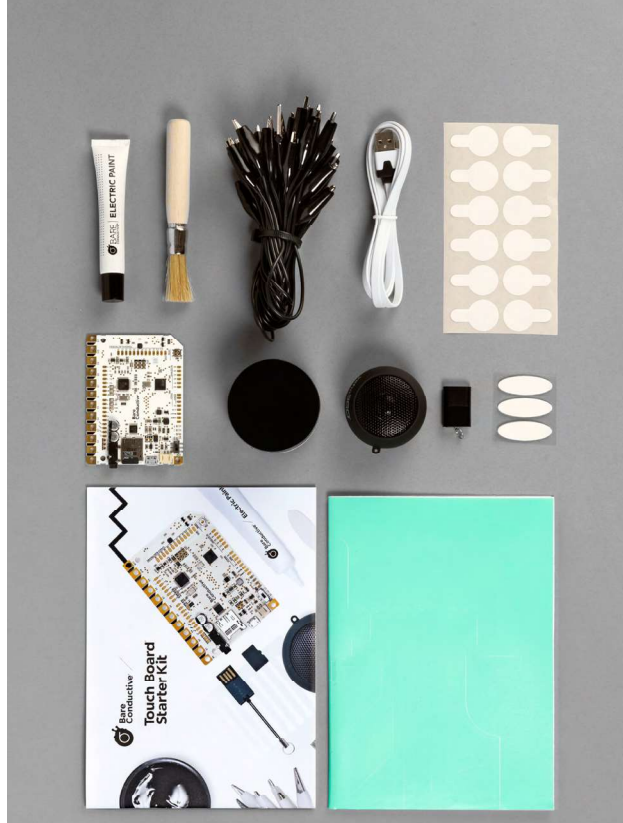


Touch Board Starter Kit / SKU-5235

Design with paintable sensors

Great item for:

The maker, the hobbyist,
the tinkerer, the artist,
the trendy, the gamer



Connect your surroundings to the digital world with this **Electric Paint** and **Touch Board Kit**. No programming required!

In this box, you'll find a **Touch Board**, **Electric Paint**, essential components and everything you need to start creating interactive electronic projects. This kit comes packed with resources including three projects examples, step-by-step full color guidebook, online tutorials and inspiration.

Product Features

- | | |
|------------------------------|---|
| 1 x Touch Board | 10 x Crocodile Clips
(colors may vary) |
| 1 x Electric Paint 10ml Tube | 1 x House Stencil |
| 1 x Electric Paint 50ml Jar | 1 x Stencil Brush |
| 1 x Guidebook | 12 x Sticky Tabs |
| 1 x MicroSD Card* | 3 x Velcro Stickers |
| 1 x MicroSD Card Reader | 2 x Paper Cutouts |
| 1 x Micro USB Cable | |
| 1 x Mini Speaker | |

* Touch Board will work with any microSD card up to 32GB

Touch Board Pro Kit / sku-5303

Prototype and design with sensors

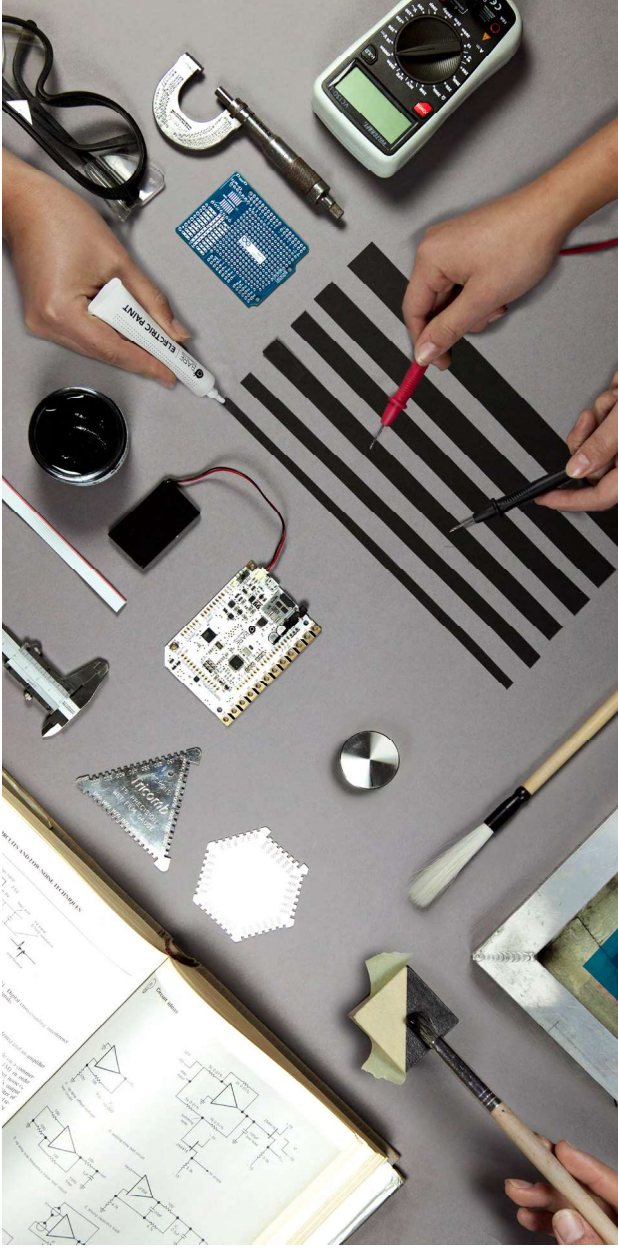


Everything you need to prototype your project with the **Touch Board** and **Electric Paint**.

The **Touch Board Pro Kit** has all the tools and resources you need to prototype your **Electric Paint** and **Touch Board** projects. In this box you'll find **Printed Sensors**, the exclusive **Touch Board Proto Shield**, essential components and everything you need to take your interactive projects to the next level, whether you're a beginner to electronics or programming pro.

Great item for:

The engineer, the tinkerer,
the university student, the artist,
the innovator, the experimenter



Included in this kit*

- 1 x Touch Board
- 1 x Electric Paint 10ml Tube
- 1 x Electric Paint 50ml Jar
- 3 x A5 Printed Sensors
- 1 x Touch Board Proto Shield
- 1 x Header Kit
- 1 x Resource guide
- 1 x MicroSD Card*
- 1 x MicroSD Card Reader
- 1 x Micro USB Cable
- 10 x Crocodile Clips (colors may vary)
- 1 x 15m Copper Tape

* Touch Board will work with any microSD card up to 32GB

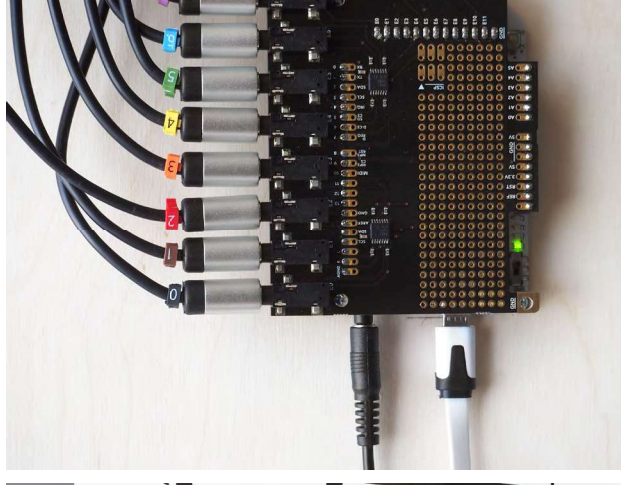


Interactive Wall Kit / SKU-5426

Ready-to-install interactivity

Great item for:

Exhibition design, retail displays, brand activations, display booths, point of sale, interactive walls



Create robust and reliable interactive installations with the

Interactive Wall Kit. This easy-to-use kit includes all the tools and resources you need to build an interactive wall or mural.

Build a display that triggers sound, video, or projection mapping, and add interactivity to your office, exhibition stand, lobby, or shop. No electronics or programming expertise required. Simply create your visuals, set up your surface, install and connect. Interactivity at your fingertips!

Included in this kit*

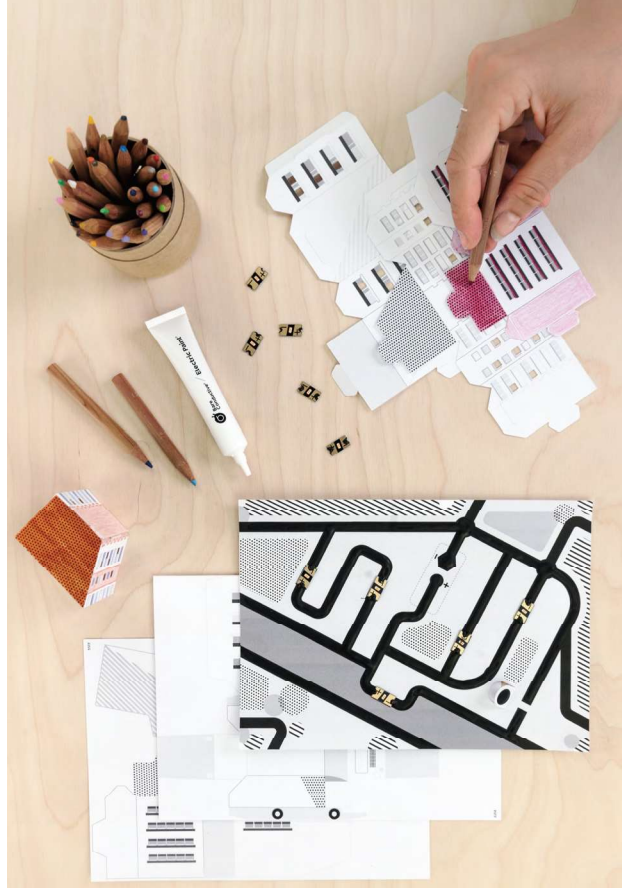
- 1 x Touch Board
- 1 x Electrode Shield
- 12 x Electrode Pads
- 12 x Shielded Cables
- 42 x Fixing Screws
- 1 x Interactive Wall Guide
- 50 x Cable Management Clips
- 1 x Cable Marking Set
- 1 x microSD Card
- 1 x microSD Card Reader
- 1 x Micro USB Cable

* Electric Paint not included



Electric Paint Circuit Pack / SKU-1527

Draw circuits with Electric Paint



Great item for:

Schools, Summer Camps,
Makerspaces, Fablabs,
corporate workshops

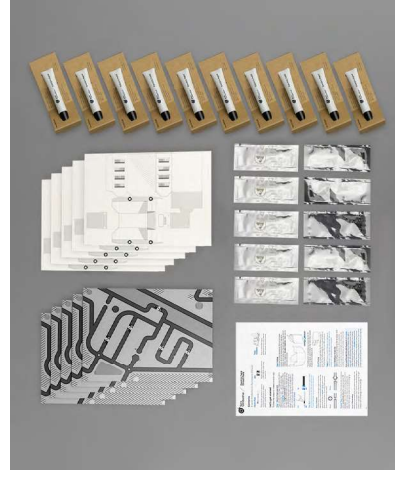
The **Electric Paint Circuit Pack** introduces groups to the basic principles of a circuit through a fun and instructive activity.

The **Electric Paint Circuit Pack** comes with die-cut paper templates and easy instructions to learn how switches and circuits work. Step-by-step instructions guide you through painting a circuit with **Electric Paint**, applying LEDs, and creating a simple switch. A 45- 60 minute activity for up to 30 participants.

Included in this kit*

- 10 x Electric Paint 10ml Tube
- 10 x Die-cut Templates (60 parts)
- 1 x Instructions Sheet
- 5 x LED carrier packs (25 LEDs)

* 9V batteries not included



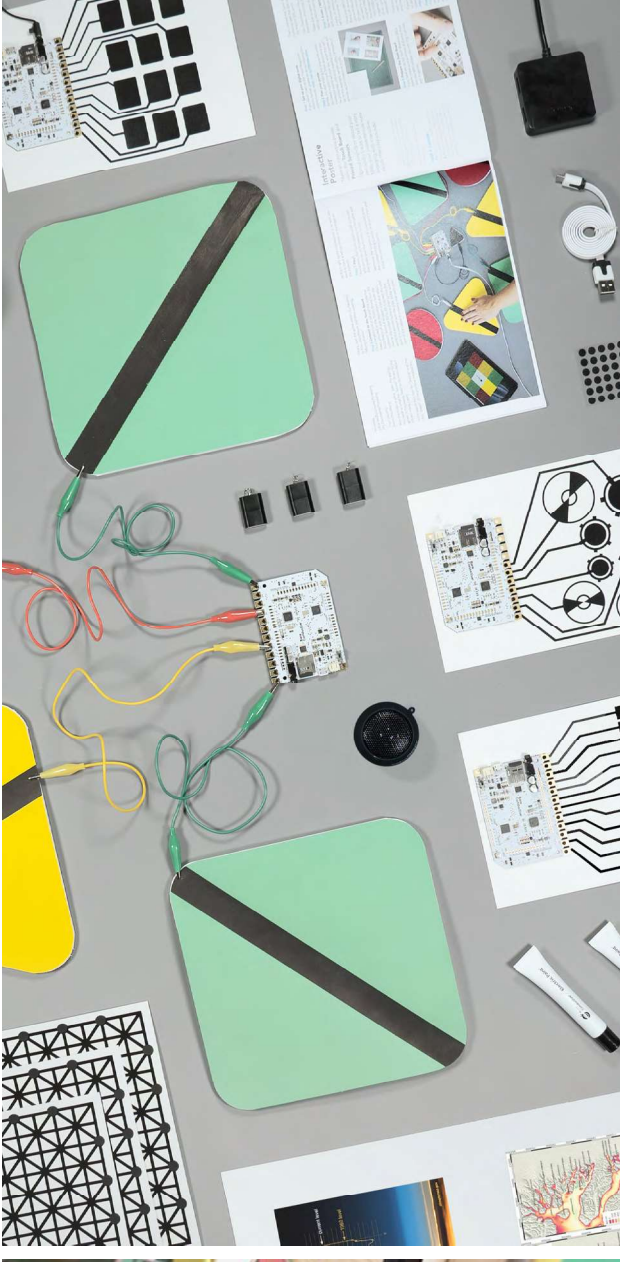
Interactive Workshop Pack / SKU-5433

3 creative projects featuring smart sensors



Great item for:

Schools and Universities,
Summer Camps, Makerspaces,
Fablabs, corporate workshops



Included in this kit*

- 5 x Touch Board
- 4 x Electric Paint 50ml jar
- 5 x Electric Paint 10ml tube
- 6 x Printed Sensors
- 6 x Instrument Sensors
- 1 x Guidebook
- 1 x Sheet carbon dots
- 2 x USB hub
- 5 x Mini speakers
- 5 x MicroSD card
- 5 x MicroSD card reader
- 5 x Micro USB cables
- 50 x Crocodile clips
- 60 x Sticky tabs
- 6 x Velcro stickers

Create musical instruments, game controllers, and interactive posters using **Electric Paint**, **Printed Sensors** and the **Touch Board**.

The **Interactive Workshop Pack** is a great way to get a group started with design and technology projects using the Arduino IDE to program the Touch Board. It comes with everything you need to run 3 different workshops with up to 25 participants each.

