



HAND TOOLS RANGE



Discover RS PRO, the value alternative at the right price.

Browse the product highlights of our Australia & New Zealand hand tool range that have been tested and approved to bring you quality that you can rely on.



YOUR SMART CHOICE FOR HAND TOOLS

Discover RS PRO, the own brand, of RS, and our wide range of quality products across all industries. Our value alternative at the right price.



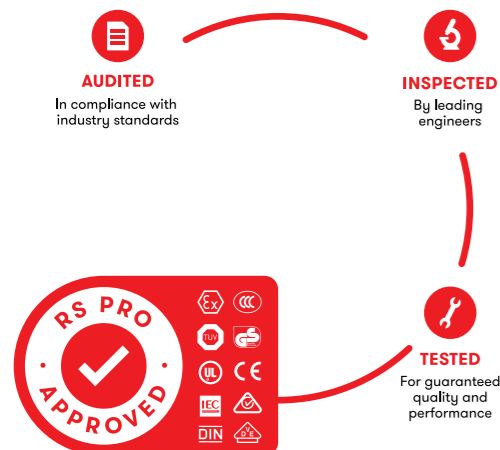
The RS PRO hand tools range has everything you need to get the job done.

RS PRO offers customers with one brand that gives huge choice and solutions, proven quality and prices that can be trusted.

The wide range of hand tools from RS PRO covers all the needs of the professional engineer, technician and tradesman with quality products you can trust.

Since 1937, RS PRO has had a passion for industrial parts. More importantly, we believe that every part matters, because the quality of your applications will always be linked to the quality of every part going into them.

This is why we rigorously test every part against demanding industry standards to gain the RS PRO Seal of Approval



To view our latest prices, charges and full terms see RS Conditions of Sale as set out online at au.rs-online.com and nz.rs-online.com.
Published by: RS Components Pty Ltd
Registered office:
25 Pavesi Street Smithfield NSW 2164 Australia
RS are trademarks of RS Components Limited. An RS Group PLC Company.

PROFESSIONAL TOOL KITS

Engineering Tool Kits	4
Mechanical Tool Kits	8
Electrical Tool Kits	10



TOOL STORAGE

Tool Storage	12
--------------	----



SPANNERS, SOCKETS & WRENCHES

Socket Sets - Impact	14
Socket Sets - 1/4 Inch	16
Socket Sets - 1/2 Inch	18
Socket Sets - 3/8 Inch	20
Socket Metric	21
Socket Wrenches	22
Insulated Spanners	23
Spanners & Wrenches	24
Cross Wrenches & Control Cabinet Keys	26
Nut Drivers & Splitters	27



SCREWDRIVERS, HEX & TORX KEYS

Screwdrivers - Bits	29
Screwdrivers - Hex	30
Screwdrivers - Insulated	32



HAMMERS & DEMOLITION

Hammers & Demolition	33
----------------------	----



PLIERS & CUTTERS

Insulated Pliers	35
Pliers - Water pump	36
Cutters & Shears	37
Pliers	38
Pliers Sets	39



TESTING, MEASURING & MARKING

Measuring & Marking	42
Test & Measurement Tools	44



SANDING, FILING & POLISHING

Sanding, Filing & Polishing Tools	40
-----------------------------------	----



RIVETING

Riveting Tools	41
----------------	----



CABLE, CONNECTOR & CRIMPING

Cable, Connector & Crimping	46
ESD Tools	47



THREADING TOOLS

Threading Tools	48
-----------------	----



SPECIALIST

Specialist Tools	50
Tweezers	51



ESSENTIALS

Torches & Inspection Lamps	52
RS PRO Essentials	53
Adhesives, Sealants & Tapes	54



PROFESSIONAL TOOL KITS

The RS PRO professional tool kit range is a collection of specialised tools and equipment designed to meet the needs of trades people in various industries, such as mechanics, electricians, plumbers, carpenters, and other skilled trades. The purpose of a professional tool kit range is to provide trades people with a comprehensive and organised set of tools for every situation.

82 Piece Technician's Tool Kit

- Supplied in a heavy duty carry case of convenient storage and organisation,
- Contains a selection of essential hand tools which includes screwdrivers, cutters, hex keys, pliers, spanners and a voltage tester plus much more.
- Ideal choice for both electrical and industrial engineering applications and offers a high quality and precision finish, no matter what the application is that these tools are being used for.



136-3410 82 Piece Engineers Tool Kit with Case

Kit contains:

- | | |
|--|--|
| 1- Magnetic Pick-Up and Claw Tool | 22- Cable Stripper |
| 2- Mini Hacksaw | 23- RZR Series Cable Shears - 170 mm |
| 3- Ball Pein Hammer - 8 oz. | 24- Wire Stripping Pliers - 160 mm |
| 4- Trimming Knife | 25- Multi-Purpose Cutter (Straight) |
| 5- Electronics Short Needle Nose Pliers | 26- Fiberglass Pencil |
| 6- Electronics End Cutter | 27- Extra Fine Straight Tweezers |
| 7- Electronics Diagonal Cutter (Small Bevel) | 28- 3 Pcs Trim Tool Kit |
| 8- Compact Tape Measure - 3x16 mm / 10 ft | 29- 18 Piece Hexagon L Key Set - Metric / Imperial |
| 9- Inspection Mirror | 30- Offset Slotted Screwdriver - 4.0 mm |
| 10- Solder Sucker | 31- Offset Phillips Screwdriver - PH1xPH2 |
| 11- Small Cleaning Brush | 32- Long Nose Pliers - 160 mm |
| 12- Knife File - 2nd Cut - 150 mm | 33- Diagonal Cutter - 160 mm |
| 13- Solder Aid Set | 34- Combination Pliers - 180 mm |
| 14- Double Open End Wrench - 5x5.5/6x7/8x10 mm | 35- Adjustable Wrench (Phosphate/PVC) - 150 mm |
| 15- Magneto File Set | 36- Single-Pole Voltage Tester (Short) |
| 16- 6 Piece Needle File Set | 37- Electronics Slotted Screwdriver - 3x100 mm |
| 17- 0.70 mm Wire Lead Solder, 100 g | 38- Pozidriv Screwdriver - PZ0x60/PZ1x80/PZ2x100mm |
| 18- Desoldering Braid | 39- Slotted Screwdriver (Cabinet Tip) - 3.0x 00/4.0x100/5.5x100/5.5x200/6.5x100 mm |
| 19- Jeweller's driver (4 blades) | 40- 75 mm Screw Gripping Screwdriver |
| 20- Pocket Lens | 41- 150 mm Screw Gripping Screwdriver |
| 21- 230V Electrical Soldering Iron | |

23 Piece VDE 1000 V Engineers Tool Kit

- Ergonomic multi-component handles
- Optimum balance of torque and control
- Ideal for fine and delicate work
- High quality
- VDE approved



829-6549

Kit includes:

- Phillips Screwdrivers PH1 x 100, PH2 x 100 mm
- Slotted Screwdriver 1 x 5.5 x 125 mm, 0.8 x 4 x 100 mm
- 1/2 Inch Sockets 10, 12, 13, 14, 17, 19, 22, 24 mm
- Insulated VDE Open Ended Spanner Set 7, 8, 10, 12, 14 mm
- 150 mm Diagonal Pliers
- 200 mm Combination Pliers
- 1/2 Inch Reversible Ratchet
- 1/2 Inch T-Handle
- Cable Knife

25 Piece Engineers Tool Kit

- Impact resistant, waterproof IP67 case with customisable tool fixing system and a soft grip handle
- Comes complete with high-quality tools



136-3400 25 Piece Engineers Tool Kit with Case

Kit contains:

- | | |
|---|--|
| 1- Double Open End Wrench - 5x5.5 / 6x7 / 8x10 mm | 12- Compact Tape Measure - 3x16 mm |
| 2- 6 Piece Needle File Set | 13- Electronics Short Needle Nose Pliers |
| 3- Gas Soldering Iron | 14- 7 Piece Hexagon L Key Set - Metric |
| 4- Solder Sucker | 15- 0.70 mm Wire Lead Solder, 100 g |
| 5- Trimming Knife | 16- Adjustable Wrench (Phosphate/PVC) - 150 mm |
| 6- Extra Fine Straight Tweezers | 17- Wire Stripping Pliers - 160 mm |
| 7- Jeweller's driver (4 blades) | 18- Diagonal Cutter - 140 mm |
| 8- 3 Pcs Trim Tool Kit | 19- Combination Pliers - 160 mm |
| 9- Single-Pole Voltage Tester | 20- Slotted Screwdriver - 4.0x100 / 6.5x100mm |
| 10- Electronics Slotted Screwdriver - 3x80 mm | 21- Pozidriv Screwdriver - PZ1x80 mm / PZ2x100mm |
| 11- Electronics Diagonal Cutter (Small Bevel) | |

213 Piece Engineers Tool Kit With Trolley

- Recessed worktop with a high-quality mat to ensure a convenient working area
- Holders for spray cans and paper rolls
- Smart-Lock system that prevents accidental opening
- Heavy duty oil resistant rubber wheels, with two fixed and two swivel wheels and emergency brake



125-3047 213 Piece Engineers Tool Kit with Trolley, 975 x 710 x 450

Kit contains:

- 833-5922** 1 - 16 Piece Combination Wrench Set
- 833-5935** 2 - 52pc 1/4" Drive Socket and Hex Key Set
- 833-5950** 3 - 23pc 1/2" Drive Socket Set with Ratchet
- 833-5957** 4 - 29pc 1/2" TORX/Hex/XZN Socket Bits Set
- 833-5941** 5 - 7pc Insulated Slotted/PH Screwdriver Set
- 833-5953** 6 - 11pc Standard and Needle File Set
- 833-5947** 7 - 39pc Slotted/PZ Screwdriver and Bit Set
- 833-5972** 8 - 3pc Softgrip Pliers Set
- 833-5938** 9 - 3pc Pliers and Adjustable Wrench Set
- 833-5919** 10 - 10pc Precision Plier and Screwdriver Set
- 833-5913** 11 - 15 piece L, T Metric Hex Key Set, 1.5 □ 10, 2 □ 6mm
- 833-5944** 12 - 6 Piece Measuring and Cutting Tool Kit with Foam Inlay



160 Piece Roller Cabinet Tool Kit

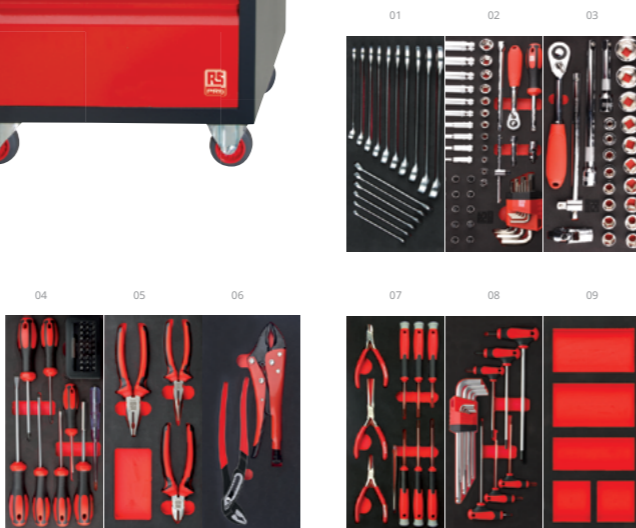
- Sturdy and dependable construction, premium quality sheet steel
- Elegant and durable electrostatic matt powder coated, scratch proof
- 5 drawers - compatible with SBS EVA tool modules
- Each drawer can accommodate 3 SBS EVA tool modules
- Low friction telescopic ball bearing slides ensuring silk smooth operation
- Central locking mechanism. No possibility of key match
- Recessed worktop with a high quality mat to ensure a convenient working area



125-3048 160 Piece Roller Cabinet Tool Kit, 825 x 630 x 450

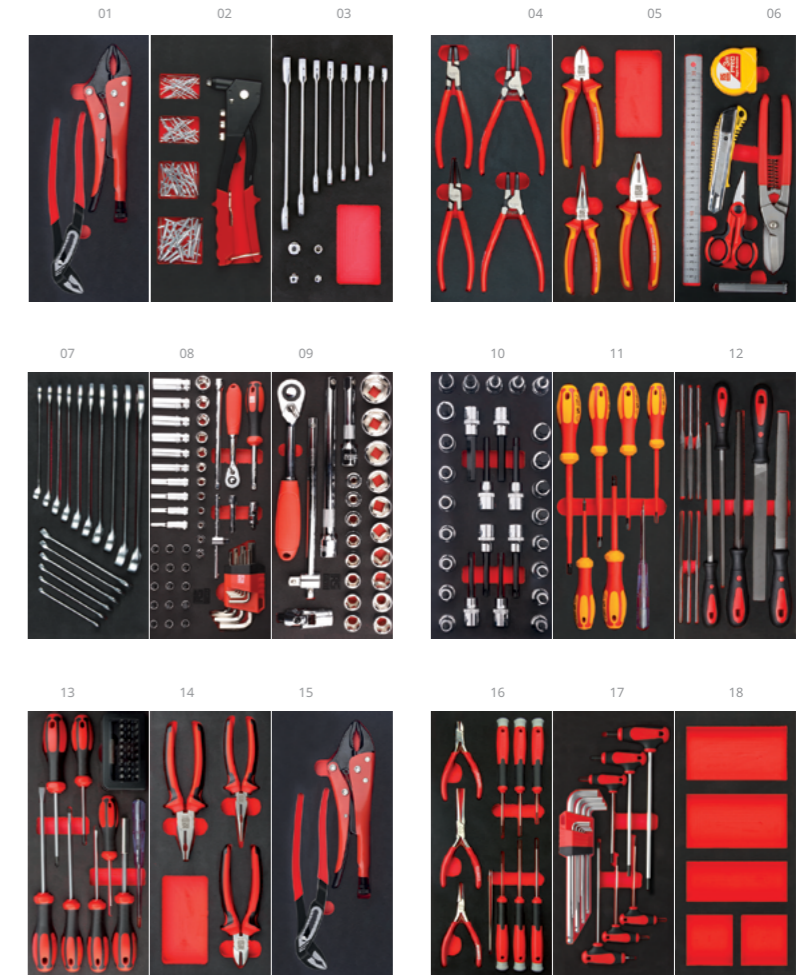
Kit contains:

- 833-5922** 1 - 16 Piece Combination Wrench Set
- 833-5935** 2 - 52pc 1/4" Drive Socket and Hex Key Set
- 833-5950** 3 - 23pc 1/2" Drive Socket Set with Ratchet
- 833-5947** 4 - 39pc Slotted/PZ Screwdriver and Bit Set
- 833-5972** 5 - 3pc Softgrip Pliers Set
- 833-5938** 6 - 3pc Pliers and Adjustable Wrench Set
- 833-5919** 7 - 10pc Precision Plier and Screwdriver Set
- 833-5913** 8 - 15 piece L, T Metric Hex Key Set, 1.5 □ 10, 2 □ 6mm
- 9 - 5 Division EVA Module



240 Piece Tool Set And 7 Drawer Roller Cabinet

- 7 drawer roller cabinet
- 240 piece tool kit
- Recessed worktop with a high-quality mat
- Side compartments ideal for spray cans and paper rolls
- Low friction telescopic ball bearing slides ensuring smooth operation
- Fitted with an emergency brake
- Oil resistant wheels



125-3046 240 Piece Tool Kit & 7 Drawer Roller Cabinet, 975 x 710 x 450, 60.2 kg

Kit contains:

- 833-5966** 1 - 2pc Clipper and Stripper Set
- 833-5969** 2 - 5pc Hand Riverter Set
- 833-5925** 3 - 12pc Ratcheting Combination Wrench Set
- 833-5944** 4 - 6 Piece Measuring and Cutting Tool Kit with Foam Inlay
- 833-5931** 5 - 3pc VDE Insulated Pliers Set
- 833-5929** 6 - 4pc Circlip Pliers Set
- 833-5922** 7 - 16 Piece Combination Wrench Set
- 833-5935** 8 - 52pc 1/4" Drive Socket and Hex Key Set
- 833-5950** 9 - 23pc 1/2" Drive Socket Set with Ratchet
- 833-5957** 10 - 29pc 1/2" TORX/Hex/XZN Socket Bits Set
- 833-5941** 11 - 7pc Insulated Slotted/PH Screwdriver Set
- 833-5953** 12 - 11pc Standard and Needle File Set
- 833-5947** 13 - 39pc Slotted/PZ Screwdriver and Bit Set
- 833-5972** 14 - 3pc Softgrip Pliers Set
- 833-5938** 15 - 3pc Pliers and Adjustable Wrench Set
- 833-5919** 16 - 10pc Precision Plier and Screwdriver Set
- 833-5913** 17 - 15 piece L, T Metric Hex Key Set, 1.5 □ 10, 2 □ 6mm
- 18 - 5 Division EVA Module

78 Piece Mechanical Tool Kit

- High quality set supplied fitted in a blow moulded carry and storage case
- Chrome Vanadium steel construction
- Socket stamp with sizes for quick identification
- Visit our website for more details on contents



829-6568 78 Piece 1/4 & 1/2 Inch Drive

Kit contents:

- 1/2 Inch Sockets: 10, 11, 12, 13, 14, 15, 17, 19, 22, 24, 27, 30, 32 mm
- 1/4 Inch Sockets: 4, 5, 6, 7, 8, 9, 10, 11, 13 mm
- 1/4 Inch Deep Sockets: 8, 10, 12, 13 mm
- Spark Plug Socket 16 and 21 mm
- 1/2 Inch Quick Release Ratchet
- 1/2 Inch Sliding T-Handle
- 1/4 Inch Quick Release Socket Ratchet
- 1/4 Inch Sliding T-Handle
- 1/4 Inch Spinner Handle
- Socket Attachments (1/2 Inch Extensions - 125 and 250 mm, 1/4 Inch Extension Bar - 75 mm, 1/4 Inch Flexible Extension, 1/2 Inch Universal Joint, 1/4 Inch Universal Joint, 1/4 Inch Coupler)
- 180 mm Combination Pliers
- 250mm Water Pump Pliers
- 18 Piece Hex Bit Set (1/4 Inch Hex Bits: 3, 4, 5, 6 mm; 1/4 Inch Slotted Bits: 3, 4, 5, 6 mm; 1/4 Inch Phillips Bits: PH1, PH2, PH3; 1/4 Inch Pozidriv Bits: PZ1, PZ2, PZ3; 1/4 Inch Torx Bits: T10, T15, T20, T25)
- Combination Spanners 8, 10, 12, 13, 14, 15, 17, 19 mm
- Screwdrivers Slotted: 6 x 100, 4 x 100 mm; Phillips: PH1 x 75, PH2 x 100, PH3 x 150 mm
- Hex Key Set
- 300 g Hammer

72 Piece Socket & Tool Set

- 3/8in socket components
- Chrome Vanadium steel construction
- Sandblasted finish
- Sockets stamp with sizes for quick identification
- Full Allen key set



829-6561 73 Piece Mechanical Tool Kit with Case

Kit contents:

- 3/8in Quick Release Socket Ratchet
- 3/8in Spark Plug Socket: 16mm, 3/8in Extension: 75mm
- 3/8in Universal joint
- 3/8in Sockets: 6, 7, 8, 9, 10, 11, 12, 13, 14, 15, 16, 17, 18, 19mm
- Hex Key Set: 1.5, 2, 2.5, 3, 4, 5, 6, 8, 10mm
- 300g Hammer
- 160mm Long Nose Plier, 180mm Combination Pliers, 250mm Water Pump Pliers
- 200mm Adjustable Wrench
- Combination Wrench: 8, 10, 11, 12, 13, 14, 15, 16, 17, 18, 19mm
- Slotted Screwdriver: 5.5 x 100, 6.5 x 150, 6.5 x 38mm
- Phillips Screwdriver: PH1 x 100, PH2 x 150, PH2 x 38mm, Bit Driver
- Phillips Bit: PH0, PH1, PH2, PH3
- Pozidriv Bits: PZ0, PZ1, PZ2, PZ3, Torx Bits: T10, T15, T20, T25, T30
- Slotted Bits: 3, 4, 5, 6, 7mm
- Hex Bits: 3, 4, 5mm
- Utility Knife
- Magnetic Pick Up
- 5m Tape Measure

94 Piece Mechanics Tool Kit

- Contains a useful selection of sockets, spanners, universal joints, hex bit couplers, hex bits, precision screwdrivers and extension bars in various sizes
- And all are high quality RS PRO tools



734-8889 94 Piece Mechanics Tool Kit

Kit contains:

- 1/2 Inch Sockets 13, 14, 15, 16, 17, 18, 19, 20, 21, 22, 23, 24, 27, 30, 32 mm
- 1/4 Inch Sockets 4, 4.5, 5, 5.5, 6, 7, 8, 9, 10, 11, 12, 13 mm
- Ratchet Handle, Universal Joint and Sliding T-bar
- 1/2 Inch Quick Release Ratchet
- 1/4 Inch Quick Release Ratchet
- 1/2 Inch Universal Joint (Rivet Type)
- 1/4 Inch Universal Joint (Rivet Type)
- 3/8 Inch T-bar Adapter
- 1/4 Inch 110 mm Sliding T-bar
- Combination Spanners 8, 10, 11, 12, 13, 14, 17, 19, 22 mm
- Combination Spanners 8, 10, 11, 12, 13, 14, 17, 19, 22 mm
- Precision Screwdrivers Slotted: 1.5, 2, 3 mm Phillips: No.0-0, No.0, No. 1 Torx: T6, T8, T10
- Screwdriver Bits 25 (L) x 6.35 mm Hexagon Bits: Slotted: 4, 5, 6 mm; Phillips: No.1, No.2; Pozi: No.1, No.2; Hex Bits: 3, 4, 5 mm; Torx: T10, T15, T20, T25, T27, T30; 30 (L) x 10 mm
- Hexagon Bits Slotted: 7, 8, 10 mm; Phillips: No.3, No.4; Pozi: No.3, No.4; Hex Bits: 6, 7, 8, 10 mm; Torx: T30, T40, T45, T47, T50
- Spark Plug Sockets 16 and 21 mm
- 1/2 Inch 125 and 250 mm Extension Bar
- 1/4 Inch 55, 100 and 250 mm Extension Bar
- 1/4 Inch 150 mm Spinner
- 1/4 Inch Screwdriver Bit Coupler
- 1/2 Inch Screwdriver Bit Coupler
- Blow Moulded Case

82 Piece Mechanics Tool Kit

- Ergonomic multi-component handles
- Optimum balance of torque and control
- High quality
- Tool storage – comes in a sturdy toolbox - foldout construction for easy access & large storage capacity



136-3412 82 Piece Mechanics Tool Kit

Kit contains:

- 1- Flat Chisel 21x150mm/Centre Punch - 4x120mm/ Parallel Pin Punch 3,4,5,6 x150mm
- 2- Soft Face Hammers
- 3- Ball Pein Hammer - 16 oz.
- 4- Stainless Steel Rules - 30mm
- 5- Water Pump Pliers (Box Joint/PVC) - 250 mm
- 6- Compact Tape Measure - 3x16 mm / 10 ft
- 7- Feeler Gauge(Metric- 0.05-1.00mm)
- 8- Trimming Knife
- 9- Double Open End Wrench - 5x5.5/6x7/8x10 mm
- 10- 12 Piece Combination Wrench Set
- 11- 1/2 Inch Dr. 6-Point Sockets - 18 pieces
- 12- 1/2 Inch Dr. Quick Release Reversible Ratchet
- 13- 1/2 Inch Dr. Sliding T-Handles
- 14- 1/2 Inch Dr. Extension Bar-125mm
- 15- 1/2 Inch Dr. Extension Bar-250mm
- 16- 1/2 Inch Dr. Universal Joint
- 17- 18 Piece Hexagon L Key Set - Metric / Imperial
- 18- Long Nose Pliers - 160 mm
- 19- Diagonal Cutter - 160 mm
- 20- Combination Pliers - 180 mm
- 21- Pozidriv Screwdriver - PZ1x80 mm / PZ2x100 mm
- 22- Slotted Screwdriver - 4.0x100 / 5.5x125 / 6.5x150 / 8.0x150mm
- 23- Single-Pole Voltage Tester (Short)
- 24- Stubby Slotted Screwdriver - 5.5x25 mm / Stubby Pozidriv Screwdriver - PZ2x25 mm
- 25- Padlock



42 Piece Mechanical Tool Kit

- Ergonomic multi-component handles
- Optimum balance of torque and control
- High quality
- Sturdy tool box



136-3415 42 Piece Mechanical Tool Kit

Kit contains:

- 1- Ball Pein Hammer - 16 oz.
- 2- 12 Piece Combination Wrench Set
- 3- Trimming Knife
- 4- Compact Tape Measure - 3x16 mm / 10 ft
- 5- Flat Chisel 21x150mm/Centre Punch - 4x120 mm/Parallel Pin Punch 3,4,5,6 x 150mm
- 6- Long Nose Pliers - 160 mm
- 7- Diagonal Cutter - 160 mm
- 8- Combination Pliers - 180 mm
- 9- Water Pump Pliers (Box Joint/PVC) - 250 mm
- 10- Single-Pole Voltage Tester (Short)
- 11- Pozidriv Screwdriver - PZ1x80 / PZ2x100 mm
- 12- Slotted Screwdriver (Cabinet Tip) - 3.0x075 / 4.0x100 / 5.5x125 / 6.5x150 mm
- 13- 9 Piece Hexagon L Key Set - Metric
- 14- Padlock



82 Piece Technician's Tool Kit

- Ergonomic multi-component handles
- Optimum balance of torque and control
- High quality
- VDE approved screwdrivers and pliers for electrical safety
- Tool storage - comes in a sturdy tool case



136-3417 36 Piece Electricians Tool Kit with Case

Kit contains:

- | | |
|--|--|
| 1- Claw Hammer - 16 oz. | 11- Insulated C-PLUS Slotted Screwdriver (VDE) - 3.0x100/4.0x100/ 5.5x125/6.5x150 mm |
| 2- Mini Hacksaw | 12- Automatic Wire Stripper |
| 3- Compact Tape Measure - 3x16 mm / 10 ft | 13- Cable Stripper |
| 4- Torpedo Level | 14- Electrician Knife (1000V) |
| 5- Ratchet Bit Driver Set | 15- Insulated Combination Pliers (VDE) - 180 mm |
| 6- Rethreading Tool - M3.5 | 16- Insulated Diagonal Cutter (VDE) - 160 mm |
| 7- Single-Pole Voltage Tester (Short) | 17- Insulated Long Nose Pliers (VDE) - 200 mm |
| 8- Non-Contact | 18- RZR Series Insulated Cable Shears (VDE) - 170 mm |
| 9- Insulated Pozidriv Screwdriver (VDE) - PZ1x80 / PZ2x100 / Flat-Pozi 2x100mm | 19- Insulated Water Pump Pliers (VDE) - 250 mm |
| 10- Insulated C-PLUS Phillips Screwdriver (VDE) - PH1x80/PH2x100 mm | |

32 Piece Electrician's Tool Kit

- Ergonomic multi-component handles
- Optimum balance of torque and control
- High quality
- VDE approved for electrical safety
- Tool storage - comes in a sturdy tool bag



136-3411 32 Piece Electricians Tool Kit with Case, VDE Approved

Kit contains:

- | | |
|--|--|
| 1- Wallboard Saw - 160 mm | 14- Slotted Screwdriver (Flared Tip) - 10.0x200 mm |
| 2- Safety Goggles | 15- 150 mm Screw Gripping Screwdriver |
| 3- Compact Tape Measure - 3x16 mm / 10 ft | 16- Stubby Slotted Screwdriver - 5.5x25 mm |
| 4- Claw Hammer - 16 oz. | 16- Stubby Pozidriv Screwdriver - PZ2x25 mm |
| 5- Flat Cold Chisel - 16x150/20x175mm, Centre Punch - 4x120 mm | 17- Insulated Pozidriv Screwdriver (VDE) - PZ1x80/PZ2x100 mm |
| 6- Hacksaw (in-Handle Fixing System) | 18- Insulated Slotted Screwdriver (VDE) - 2.5x 75 / 4.0x100 mm |
| 7- Mini Hacksaw | 19- Long Nose Pliers - 160 mm |
| 8- Automatic Wire Stripper | 20- Diagonal Cutter - 160 mm |
| 9- Trimming Knife | 21- Combination Pliers - 200 mm |
| 10- Professional LED Flashlight | 22- RZR Series Cable Shears - 170 mm |
| 11- Marker Pen | 23- Multi-Purpose Cutter (Straight) |
| 12- Single-Pole Voltage Tester (Short) | 24- Adjustable Wrench (Phosphate/PVC) - 200 mm |
| 13- Electronics Slotted Screwdriver - 3x80 mm | 25- Water Pump Pliers (Box Joint/PVC) - 250 mm |
| | 26- Water Pump Pliers (Box Joint/PVC) - 300 mm |

Electrician's Tool Kit

- VDE approved tool set Ergonomic multi-component handles
- Optimum balance of torque and control
- Ideal for fine and delicate work
- High-quality multi-tools and accessories
- Range of labels



136-3402 29 Piece Electricians Tool Kit with Case

Kit contains:

- | | |
|--|---|
| 1- Electrician Knife (1000V) | 13- Insulated Pozidriv Screwdriver (VDE) - PZ0x60/PZ1x80/PZ2x100/PZ3x150mm |
| 2- RZR Series Insulated Cable Shears (VDE) - 170 mm | 14- Insulated Slotted Screwdrivers (VDE) - 2.5x75/4.0x100/5.5x125/6.5x150/8.0x175mm |
| 3- Insulated Wire Stripping Pliers (VDE) - 160 mm | 15- "Danger" Label |
| 4- Insulated Diagonal Cutter (VDE) - 160 mm | 16- "H.V. Test Area" Label |
| 5- Insulated Combination Pliers (VDE) - 180 mm | 17- "Electric Shock" Label |
| 6- Insulated Long Nose Pliers (VDE) - 200 mm | 18- "Live Wires" Label |
| 7- Insulated Open End Wrench (1000V) - 5.5/6/7/8/10/12/13/17/19 mm | 19- "High Voltage Label |
| 8- Safety Goggles | 20- "Disconnect" Label |
| 9- Black/Yellow insulation tape | 21- "415 V a.c." Label |
| 10- "Unsafe" Label | 22- "240 V a.c." Label |
| 11- Junior Hacksaw (1000V) | 23- "115 V a.c." Label |
| 12- Insulated Water Pump Pliers (VDE) - 250 mm | |

125-3049 Tool Case, 530 x 180 x 400mm

Electro-Mechanical Basic Tool Kit

- Supplied in a hard-wearing case made from highly resistant injected polypropylene
- Case has combination lock, document holder, a ceramic soldering iron holder and a single and double sided tool holder tray
- Three adjustable separators



178-043 48 Piece Electro-Mechanical Basic Tool Kit with Case

Kit Contains:

- 1 nylon cleaning brush; 1 cylindrical punch; 1 adjustable spanner; 10 angled male spanners; 4 flat spanners; 1 electrician's knife; 1 soldering iron; 1 rivet hammer; 1 insulated mirror; 1 saw frame with spare blades; 1 pair of electrician's scissors; 1 pair of stripping pliers; 1 pair of straight tweezers; 1 reversible retaining ring pliers; 4 pairs of cutting pliers; 1 pair of multigrip pliers; 1 pair of flat pliers; 1 pair of round electronic pliers; 1 steel punch; 500 g 10/10 mm lead-free solder wire; 1 roll of adhesive tape; 1 jeweller's screwdriver; 5 expert screwdrivers; 4 PH00-PH0-PH1-PH2 screwdrivers; 2 desoldering braids

255-910 Tool Case

Electricians Tool Kit

- Ergonomic multi-component handles
- Constructed from Chrome Vanadium Steel



734-8885 88 Piece Electricians Tool Kit with Case, VDE Approved

Kit contents:

- 1/2 Inch Sockets (14 - 32mm), 1/2 Inch Extension (125 & 250mm), 1/2 Inch Plug Wrench (16 & 21mm), 1/4in Sockets (4 - 13mm), 1/4in Extension (55 & 100mm), 1/4in Connector, 1/2 Inch & 1/4in Reversible Ratchet, 1/2 Inch & 1/4in Universal Joint, 1/2 Inch & 1/4in Sliding T bar, Metric Wrench (8 - 17mm), 6in Insulated Slip joint pliers, 6in Insulated Nipper pliers, 6in insulated Wire strippers, 7in Insulated Wire cutters, Insulated Water pump pliers, Electricians Shears, 250V Test pencil, 300g Hammer, 5m Tape measure, Driver bits (x20), Insulated Screwdrivers (x5), Hex Keys (x9)

TOOL STORAGE

RS PRO Tool storage serves the crucial purpose of organising, protecting, and facilitating easy access to tools and equipment. Whether in a professional setting, such as a workshop or garage, or for personal use, having an efficient tool storage system offers several benefits, organisation, protection, prevention of loss or theft, easy access, space optimisation and safety.

Heavy Duty Drawer Wheeled Tool Cabinet

- Mobile tool cabinet
- Central locking mechanism for added security
- Fully extending drawers
- Recessed worktop



- 753-1570 6 drawers, 830mm x 630mm x 450mm, 47.7kg
- 753-1573 3 drawer, 830mm x 630mm x 450mm, 39.3kg
- 753-1576 5 drawers, 830mm x 630mm x 450mm, 45.65kg
- 753-1582 12 drawer Maintenance Cart, 870mm x 1085mm x 450mm, 87.75kg
- 753-1589 7 drawers, 970mm x 630mm x 450mm

Polyester Backpack With Shoulder Strap

- 16" rucksack with reflective piping
- Comfortable padded shoulder straps
- Double zipped bottom section – ideal for laptop, guarantees extra safety
- Multiple pockets
- Drinks holder
- Mobile phone/mp3 player holder on strap



788-7211 340mm x 220mm x 410mm

Polyester Tool Bag With Shoulder Strap

- The bag is constructed with tear-resistant padded polyester, with a durable welded waterproof plastic base. This ensures that your cargo is adequately protected against the elements and casual impacts.



788-7205 310mm x 200mm x 210mm

Polyester Tool Bag With Shoulder Strap

- Top opens with a zipper
- Shoulder strap with adjustable function and buckle
- Removable baseboard
- Separate front
- Comes in black with red webbing



707-7335 445mm x 170mm x 330mm

Tool Case

- Waterproof (IP67)
- Dustproof
- Impact/shock resistant
- Stackable
- Soft-grip carry handle
- Lockable with padlock (not included)



125-3049 530 x 180 x 400mm

Mobile Tool Cupboard

- Sturdy and dependable construction, premium quality sheet steel.
- Elegant and durable electrostatic matt powder coated, scratch proof.
- Locking mechanism.
- 75 diameter, 2 locking swivel castors and 2 fixed castors



753-1598 730mm x 450mm x 310mm, 11.95kg

6 Drawer Wheeled Tool Chest

- Sturdy and dependable construction, premium quality sheet steel.
- Elegant and durable electrostatic matt powder coated, scratch proof.
- 6 fully extendible drawers
- Low friction telescopic ball bearing slides ensuring silk smooth operation.
- Padlock locking mechanism.
- 75 diameter, 2 locking swivel castors and 2 fixed castors



753-1595 6 drawers, 750mm x 560mm x 350mm

Standard Duty Tool Cabinet

- Mobile tool cabinet
- Central locking mechanism for added security
- Fully extending drawers
- Recessed worktop
- 75mm diameter wheels with 2 locking swivel castors & 2 fixed castors



753-1586 5 drawers, 650mm x 560mm x 350mm, 28.65kg

Steel Drawer Tool Chest

- Sturdy and dependable construction, premium quality sheet steel.
- Elegant and durable electrostatic matt powder coated, scratch proof.
- 3 small drawers on the top row.
- 80 mm deep top locker.
- Low friction telescopic ball bearing slides ensuring silk smooth operation.



768-1671 6 drawers, 350mm x 530mm x 340mm, 18kg
768-1678 3 drawers, 365mm x 620mm x 440mm

Wall Mount Tool Cabinet With Drawers

- Lockable doors
- Hook tool storage
- Fully extendable drawer
- Sturdy steel construction
- Two piano hinged lockable doors
- Assorted hooks
- Made from heavy gauge steel



851-7610 2 drawers, 890mm x 225mm x 750mm
851-7616 1 drawer, 900mm x 195mm x 615mm

8 Drawer Steel Tool Chest

- Durable electrostatic matt powder coated, scratch proof
- 80mm deep top locker with an integrated locking mechanism
- Low friction telescopic ball bearing slides
- 8 separate drawers with varying sizes
- Carrying handles
- Easily fits onto the majority of RS Tool Cabinets



773-2735 427mm x 660mm x 307mm

4 Drawer Jumbo Tool Chest

- Sturdy and dependable construction, premium quality sheet steel.
- Elegant and durable electrostatic matt powder coated, scratch proof.
- 4 drawers - compatible with tool modules inlays.
- Each drawer can accommodate 4 EVA tool modules.
- 80 mm deep top locker with integrated locking mechanism



833-5907 476mm x 440mm x 794mm

SPANNERS, SOCKETS & WRENCHES

RS PRO spanners, sockets and wrenches are essential tools in the toolkit of professionals tradespeople. The RS PRO range provides you choice to cover a wide range of applications and tasks; complete kits, impact sets, 1/4 inch, 1/2 inch imperial & metric options across sockets, torx & hex drives, combination spanners, open ended, ring & ratchet spanners, nut drivers, and cabinet keys - plus an extensive range of insulated VDE approved tools.

Impact Socket Sets

- Impact rated 6 point chrome molybdenum sockets
- Storage case complete with individual labelled moulds for each socket size
- All PCL sockets exceed ANSI specifications
- Features two grease rings for superior user grip
- Centre hole is punched through for extra depth on the work surface
- Offers Z-Drive, contacting the flat walls of fasteners for stronger grip
- Thin wall design with chamfered openings for easier mating to fasteners



137-0908 8 Piece Air Impact Socket Set, 1/2 Inch Metric, 12 □ 24mm

137-0909 18 Piece Impact Socket Set, 1/2 Inch Metric, 10 □ 32mm

66 Pieces 1/4 Inch And 1/2 Inch Socket Set

- Chrome Vanadium for excellent strength and corrosion resistance
- Soft comfortable ratchet handles for reduced fatigue and a tighter grip
- Fitted case reduces lost parts
- Bit sizes marked directly on the holders for quick identification of missing bits
- Strong latches for secure closing
- 75 mm and 250 mm extension bar for hard to reach areas



817-9249 66 Piece Metric 1/2 in; 1/4 Inch Standard Socket/Bit Set with Ratchet

Socket Bit Set

- 45 Piece hexagon, spline & TX bits with adaptors in a handy storage case



213-1011 45 Piece Metric 1/2 in; 3/8 Inch Standard Socket/Bit Set

46 Pieces 1/4 inch and 3/8 inch Socket and Bit Set

- Chrome Vanadium for excellent strength and corrosion resistance
- Soft comfortable ratchet handles for reduced fatigue and a tighter grip
- Fitted case reduces lost parts
- Bit sizes marked directly on the holders for quick identification of missing bits
- 1/4 and 3/8 Inch drive options



817-9242 46 Piece Metric 1/4 in; 3/8 Inch Standard Socket/Bit Set with Ratchet

61 Piece Socket Set, 1/2 In, 1/4 Inch, 3/8 Inch Square Drive

- Drive size of 1/2 in, 1/4 Inch and 3/8 in
- Square drive type
- Chrome finish
- Chrome vanadium steel material
- 61 pieces



480-6880 Socket Sizes: 4 □ 14, 9 □ 19, 9 □ 24mm
Drive Sizes: 1/2 in, 1/4 Inch, 3/8 in

10 Piece In. Drive Deep Impact Socket Set

- 10 socket bits
- Professional quality
- Offers high torque without damage to fasteners
- Increased durability
- Chrome Molybdenum Steel
- Phosphate finish



125-3056 10 Piece Metric 1/2 Inch Impact Socket Set , 6 point

6 Piece Imperial Socket Rail

- Low Profile impact sockets
- Allow access to tight spaces
- Ideal for automotive applications
- Industrial grade strength



125-0929 Impact

18 Piece In. Drive Impact Socket Set

- 16 socket bits
- Adapter and extension arm included
- Professional quality
- Offers high torque without damage to fasteners
- Increased durability
- Chrome Molybdenum Steel
- Phosphate finish



125-3055 Kit Contents: in. x 125 mm Pneumatic Extension Arm, in. Pneumatic Socket Adapter, (10-11-12-13-14-15-16-17-18-19-21-22-24-27-30-32 mm) in 6-point air sockets – Metric



46 Piece Screwdriver & Socket Set

- High torque reversible ratchet drive with a magnetic shaft, fitted with cushion grip handle and internal bit storage compartment
- Chrome plated bit driver shaft
- Sandblast finish for bits double injection grip
- All bits and sockets are manufactured from high-grade alloy steel with a rust-resistant finish and are supplied in removable plastic clips to prevent loss
- 1/4 Inch square drive adaptor included



623-6441 1/4" Hexagonal reversible ratchet bit driver, 1/4" Dr. shallow sockets (imperial 3/16", 1/4", 5/16", 11/32", 3/8", 7/16", Metric 6,7,8,10,11,13 mm), 25mm length S2 Bits (Slotted 3, 4, 4.5, 5, 5.5, 6, 7 mm, Phillips #0, 1, 2, 3, Pozi #0, 1, 2, 3, Hex 1.5, 2, 2.5, 3, 4, 5, 5.5, 6mm, Tamperproof Torx: T8, 10, 15, 20, 25 ,27, 30, 40), 25mm socket adaptor

29 Pieces 1/4 Inch Socket Set

- Chrome Vanadium for excellent strength and corrosion resistance
- Soft comfortable ratchet handle for reduced fatigue and a tighter grip
- Extension bars for hard to reach areas
- Labelled with the corresponding items for quick and easy identification
- Strong latch for secure closing
- Sturdy case for clear and easy storage and protection



817-9233 29 Piece Metric 1/4 Inch Standard Socket/Bit Set with Ratchet

60 Piece 1/4" Drive Imperial/Metric Socket Set

- Imperial and Metric Sets
- Quick-release reversible ratched and accessories
- Durable PP copolymer injection moulded case
- EVA high density foam inserts



224-2248 Set contents: Quick release reversible ratchet; bit holder socket; 50mm extension bar; 150mm extension bar; 150mm spinner handle; universal joint; 115mm sliding t-handle; 6-point socket x11; 12-point socket x9; 6-point deep socket x6; 12-point deep socket x6; slotted bit x3; Phillips bit x2; pozidriv x2; torx x6; hex bit x4; hex I key x4

16 Piece 1/4 Inch Square Drive Metric Socket Set

- Chrome vanadium steel for socket and accessories, chrome molybdenum (scm#440) steel for driver portion and P.P / TPR double injection grip.
- Satin chrome plated finish with knurled upon central portion for socket and accessories, detent grooves on all sockets and red (pantone- 187c) / black double injection grip
- Heat treated to HRC: 38 ~ 54 (sockets & accessory)
- Net weight 550 grams



623-6413 Contents: 1 pc-1/4 Inch dr. quick release ratchet with red (P.P) / black (TPR) double injection grip (gear to gear type and 45 teeth); 12 pc-1/4 Inch dr. shallow socket: (6pt) sizes: 4, 4.5, 5, 5.5, 6, 7, 8, 9, 10, 11, 12 and 13 mm; 1 pc-1/4 Inch dr. 3" (75 mm) extension bar; 1 pc-1/4 Inch dr. universal joint: (screw type); 1 pc-1/4 Inch dr. spinner handle with red (P.P) / black (TPR) double injection grip; Blow moulded case size: 9-1/2 Inch (w) x 2" (d) x 5" (h)

8 Piece Socket Set, Inch Hexagon Impact Drive

- Ensure a secure hold, regardless of the application
- Ring magnet allows for secure holding
- Colour coded for easy identification
- Chrome vanadium material ensures strength and durability
- Supplied in a convenient case



180-7090 1/4 Inch Hex Bit Socket Set , 65mm Nut Driver 6mm, 7mm, 8mm, 9mm, 10mm, 11mm, 12mm, 13mm

52 Piece Metric 1/4 Inch Deep Socket/Standard Socket/ Allen Key/Bit Set With Ratchet

- High quality square 6-point drive metric socket set and hex keys
- Steel construction for excellent strength and durability
- Bright red foam visible - helps identify missing parts quickly
- Soft comfortable reversible quick release ratchet handle for reduced fatigue and easy speedy bit replacement
- Long arm L shaped key set supplied in a plastic caddy with size markings for easy pocket storage and quick identification
- Foam tool modules are designed for regular easy removal from drawers



833-5935 52pc 1/4" Drive Socket and Hex Key Set

30 Piece Bit/Socket Set

- Bits made from hardened and tempered Chrome Molybdenum Steel (S2)
- Nuts made from Chrome Vanadium Steel and zinc alloy with carbon steel shaft of a bit holder
- Chrome-plated bit holder
- Sandblasted finish for bits & nut drivers
- Supplied in the innovative case allowing for easy access, transport and storing



213-1005 Kit contains: 1x Magnetic bit adaptor, 7x Metric Socket, 5x 25mm Hexagon Drivers, 4x 25mm Posidriv screwdriver heads, 3x 25mm Slotted (flathead) screwdriver heads, 1x 50mm Slotted (flathead) screwdriver head, 6x Torx screwdriver heads, 2x Screw Finders

39 Piece Socket And Bit Set

- Made from heat-treated and forged Chrome Vanadium Steel to ensure long-lasting durability and resistance, even in harsh worksite conditions
- Innovative 'Sure Drive' system offers a reliable and secure grip to stop slipping and rounding of fasteners, parts and fixings
- Comfortable and ergonomically designed 1/4" Ratchet handle and spinner bar
- Supplied in a metal case with a marked internal liner that allows easy identification retrieval of parts while on the job



623-6390 39 Piece Metric 1/4 Inch Standard Socket/Bit Set with Ratchet

12 Piece Socket Set, 1/4 Inch Square Drive

- Drive size of 1/4 in
- Square drive type
- Chrome finish
- Chrome-vanadium steel material
- Socket set type



487-113 12 pieces

7 Piece 1/4 Inch Bit Socket Set , Torx Bit

- Bits and sockets are made from a high-grade chrome molybdenum vanadium steel
- Heat treated to HRC: 56 □ 62
- Suitable for use with power tools
- Supplied with a socket rail and socket clips



262-0268 7 Piece 1/4 Inch Bit Socket Set , Torx Bit

10 Piece Socket Set

- Made from chrome vanadium steel
- Hardened and tempered and chrome plated for corrosion protection
- Set supplied on a socket rail retaining bar, which may be wall mounted or used inside a tool box compartment in a roller cabinet



499-2543 10 Piece Metric 1/4 Inch Deep Socket Set , 6 point

1/4 Socket Tamperproof Bit Sets

- Made with the highest-quality materials to ensure the operator a long and safe service -Bits are chrome molybdenum vanadium steel and socket body are chrome vanadium steel
- Supplied with a socket rail and a socket clips



262-0218 6 Piece Set - Imperial 1/4 Inch Bit Socket Set , Tamperproof Hex Bit 5/64, 3/32, 7/64, 1/8, 9/64, 5/32

262-0202 11 Piece set - 6, 8, 10 (TORX) 4, 6, 8, 10 (Spanner) No. 1, 2, 3, 4 (Triwing)

262-0224 Set contents: Tx8, Tx10, Tx15, Tx20, Tx25, Tx30, Tx40



32 Piece Socket Set, 1/2 Inch Square Drive

- Chrome Vanadium for excellent strength and corrosion resistance
- Soft comfortable ratchet handle
- Sizes marked directly on the holders
- Strong latch for secure closing
- Sturdy case for clear and easy storage



34 Piece 1/2" Drive Imperial/Metric Socket Set

- Imperial and Metric Sets
- Quick-release reversible ratched and accessories
- Durable PP copolymer injection moulded case
- EVA high density foam inserts



224-2250 Contains quick-release reversible ratchet, Bit holder socket, 125mm extension bar, 250mm extension bar, 200mm sliding t-handle, Universal joint, 6-point socket x 19, 12-point socket x 10, storage case with EVA foam insert

229-7278 32 Piece Metric 1/2 Inch Deep Socket/Standard Socket Set with Ratchet, 6 point; 12 point

1/2 Inch Drive Socket Set

- Chrome Vanadium for excellent strength and corrosion resistance
- Soft comfortable handles for reduced fatigue and a tighter grip
- 8-32mm sockets



817-9230 26 Piece Metric 1/2 Inch Standard Socket Set with Ratchet, 6 point

1/2 Inch Sq Drive Hex Bit Sets

- Hardened and tempered for heavy duty use
- Supplied complete on a rail retaining bar which can be wall mounted or used within a roller cabinet



262-0331 5-12mm, 100mm length

1/2 Inch Metric Deep Socket Set

- Made from hardened and tempered chrome vanadium steel
- Make it easy to tighten fasteners and simplifying the turning of rounded corners
- Help reduce fastener wear without contact with the outer of the fastener
- All sockets held upon a socket rail retaining bar



487-173 13 x 1/2 Inch Deep Sockets Size: 10, 11, 12, 13, 14, 15, 16, 17, 18, 19, 21, 22, 24mm

1/2 Inch Square Drive Torx Bit Driver Sets

- Chrome Vanadium steel sockets with S2 screwdriver bits



262-0296 10 Piece 1/2 Inch Bit Socket Set, Torx Bit

1/2 Inch Square Drive Torx Bit Driver Sets

- Chrome Vanadium steel sockets with S2 screwdriver bits



262-0303 10 Piece 1/2 Inch Bit Socket Set, Torx Bit

13 Piece Deep Socket Set

- 13 Piece deep socket set
- Drive size: 1/2 in
- Professional quality
- Non-Impact
- Chrome mirror finish for easy cleaning
- Offers high torque without damage to fasteners
- Increased durability
- Chemical Resistant Foam



249-0349 10 x 24mm

3 Piece Imperial 1/2 Inch Wheel Nut Socket Set

- Impact rated 6 point chrome molybdenum sockets
- 3 alloy wheel sockets to cover the most popular sizes for a 1/2 Inch impact wrench
- Storage case complete with individual labelled moulds for each socket size
- All PCL sockets exceed ANSI specifications
- Features two grease rings for superior user grip
- Centre hole is punched through for extra depth on the work surface
- Offers Z-Drive, contacting the flat walls of fasteners for stronger grip
- Thin wall design with chamfered openings for easier mating to fasteners



137-0910 3 Piece Imperial 1/2 Inch Wheel Nut Socket Set

8 Piece Socket Set 1/2 Inch Square Drive

- Made from chrome vanadium steel
- Hardened and tempered and chrome plated for corrosion protection
- Set supplied on a socket rail retaining bar, which may be wall mounted or used inside a tool box compartment in a roller cabinet



262-0252 E10; E12; E14; E16; E18; E20; E22; E24

6 Piece Imperial Socket Rail

- Universal sockets in sizes: 9/16", 5/8", 11/16", 3/4", 13/16" and 7/8"
- Available as standard use or impact type



125-0928 Universal sockets in sizes: 9/16", 5/8", 11/16", 3/4", 13/16" and 7/8"

12 Piece Socket Set

- Drive size of 1/2 in
- Square drive type
- Chrome finish
- Chrome vanadium steel material 12 pieces
- Contents include sockets and ratchet



668-5792 12 Piece Metric 1/2 Inch Standard Socket Set with Ratchet, 12 point

29 Piece 1/2in Torx, Hex & XZN Bit Socket Tool Module

- Steel construction for excellent strength and durability
- Soft comfortable reversible quick release ratchet handle for reduced fatigue and easy speedy bit replacement
- Supplied with a full accessory assortment for a complete kit
- Bright red foam helps identify missing parts quickly
- Foam tool modules are designed for regular easy removal from drawers



833-5957 8 x Short Torx Socket Bits (T20 to T60), 4 x Long Torx Socket Bits (T30 to T50), 7 x Short Hex Socket Bits (5 to 14mm), 4 x Long Hex Socket Bits (6 to 12mm), 5 x Short XZN Socket Bits (M05 to M12), 1 x Short L Hex Key (2.5mm)

23 Piece 1/2 Inch Socket Set Tool Module

- Steel construction for excellent strength and durability
- Soft comfortable reversible quick release ratchet handle for reduced fatigue and easy speedy bit replacement
- Supplied with a full accessory assortment for a complete kit
- Bright red foam helps identify missing parts quickly
- Foam tool modules are designed for regular easy removal from drawers



833-5950 23pc 1/2" Drive Socket Set with Ratchet

41 Piece Imperial/Metric Socket Set, 3/8-Inch Hexagon Non-Impact Drive

- Imperial & Metric socket set
- Quick-release reversible ratchet and accessories
- Durable PP copolymer injection moulded case
- EVA high density foam inserts



224-2249 6-Point Deep Socket x4, 6-Point Socket x16, 12-Point Deep Socket x4, 12-point Socket x11, 75mm Extension Bar, 150mm Extension Bar, 200mm Sliding T-handle, Quick Release Reversible Ratchet, Spinner Handle, Universal Joint

12 Piece Socket Set, 3/8 Inch Square Drive

- Drive size of 3/8 in
- Square drive type
- Chrome finish
- Chrome-vanadium steel material
- 12 pieces
- Contents include sockets and ratchet



668-5783 12 Piece Metric 3/8 Inch Standard Socket Set with Ratchet, 12 point

3/8 Inch Drive Hex Bit Set

- All sockets manufactured from chrome vanadium steel with screwdriver bits manufactured from S2 steel, hardened and tempered for heavy duty use
- All blade lengths 50mm
- Rail retaining bar can be wall mounted or used within roller cabinet storage box



262-0319 Hex 3-12mm

3/8 Inch Drive Hex Bit Set

- Heavy-duty Torx bit set
- 11 Piece set
- 3/8 Inch Square driver adapter
- Durable S2 steel construction
- Neat rack holder



262-0274 Torx T8-60

13 Piece Socket Set, 3/8 Inch Square Drive

- Drive size of 3/8 in
- Square drive type
- Chrome finish
- Chrome-vanadium steel material



487-167 42 Piece Mechanical Tool Kit with Case

18 Piece Socket Set, 3/8 Inch Square Drive

- 3/8-inch square drive socket set
- Mirror chrome finish
- 18 pieces
- 13 six-point sockets from 8 to 22 mm (excluding 9 mm and 20 mm)
- Includes 75 mm and 150 mm extension arms, one sliding T-bar, one universal joint and one reversible ratchet arm



125-3053 1/4in Torx Bits (T6, T8, T10), 1/4in Spanner Bits (4, 6, 8, 10mm), 1/4in Tri-wing (TW1, TW2, TW3, TW4)

40 Piece Flexible Head Ratchet Set

- Durable high grade Steel construction
- Ergonomic, soft grip handle for comfortable handling and reduced user fatigue
- 2 extensions and compact bit set makes this an ideal all-in-one set for any job



253-166

1/2 Inch & 3/8 Inch Square Drive Bi-Hexagon Sockets

- Non impact sockets
- Smooth sandblasted finish
- Knurled grip



- 830-4082** 1/2 inch Square Drive, 8mm
- 830-4091** 1/2 inch Square Drive, 9mm
- 830-4094** 1/2 inch Square Drive, 10mm
- 830-4098** 1/2 inch Square Drive, 11mm
- 830-4101** 1/2 inch Square Drive, 13mm
- 830-4105** 1/2 inch Square Drive, 14mm
- 830-4108** 1/2 inch Square Drive, 12mm
- 830-4111** 1/2 inch Square Drive, 17mm
- 830-4114** 1/2 inch Square Drive, 15mm
- 830-4117** 1/2 inch Square Drive, 16mm
- 830-4120** 1/2 inch Square Drive, 18mm
- 830-4123** 1/2 inch Square Drive, 19mm
- 830-4127** 1/2 inch Square Drive, 20mm
- 830-4133** 1/2 inch Square Drive, 23mm
- 830-4139** 1/2 inch Square Drive, 22mm
- 830-4142** 1/2 inch Square Drive, 24mm
- 830-4032** 3/8 inch Square Drive, 10mm
- 830-4035** 3/8 inch Square Drive, 8mm
- 830-4038** 3/8 inch Square Drive, 9mm
- 830-4041** 3/8 inch Square Drive, 11mm
- 830-4044** 3/8 inch Square Drive, 12mm
- 830-4048** 3/8 inch Square Drive, 13mm
- 830-4050** 3/8 inch Square Drive, 15mm
- 830-4054** 3/8 inch Square Drive, 16mm
- 830-4057** 3/8 inch Square Drive, 14mm
- 830-4060** 3/8 inch Square Drive, 19mm
- 830-4063** 3/8 inch Square Drive, 17mm
- 830-4066** 3/8 inch Square Drive, 18mm
- 830-4072** 3/8 inch Square Drive, 21mm
- 830-4076** 3/8 inch Square Drive, 22mm
- 830-4079** 3/8 inch Square Drive, 20mm
- 830-4085** 3/8 inch Square Drive, 23mm
- 830-4088** 3/8 inch Square Drive, 24mm

1/2 Inch Drive Impact Socket Hexagon

- Chrome Molybdenum Material
- Thick walls prevent breakage
- For use with 1/2 Inch impact wrenches
- PCL branded with sizes printed clearly on body of socket



- 137-0915** 13mm
- 137-0918** 17mm
- 137-0919** 19mm
- 137-0920** 21mm
- 137-0921** 22mm
- 137-0922** 24mm
- 137-0924** 17mm
- 137-0925** 19mm
- 137-0926** 21mm

Insulated Non-Impact Sockets

- Each tool is injection moulded
- Nylon 11 insulation
- 1/2 Inch Square drive
- 8mm to 32mm sizes available



- 911-1402** 8mm
- 911-1409** 10mm
- 911-1411** 12mm
- 911-1415** 13mm
- 911-1421** 16mm
- 911-1424** 14mm
- 911-1430** 17mm
- 911-1433** 18mm
- 911-1437** 19mm
- 911-1443** 22mm
- 911-1446** 20mm
- 911-1455** 24mm
- 911-1459** 25mm
- 911-1461** 27mm

1/4 Inch Square Drive Hexagon Sockets

- Non impact sockets
- Smooth sandblasted finish
- Knurled grip



- 830-3988** 1/4 inch Square Drive, 4mm
- 830-3990** 1/4 inch Square Drive, 5mm
- 830-3994** 1/4 inch Square Drive, 5.5mm
- 830-3997** 1/4 inch Square Drive, 4.5mm
- 830-4000** 1/4 inch Square Drive, 7mm
- 830-4004** 1/4 inch Square Drive, 8mm
- 830-4007** 1/4 inch Square Drive, 6mm
- 830-4010** 1/4 inch Square Drive, 11mm
- 830-4013** 1/4 inch Square Drive, 9mm
- 830-4016** 1/4 inch Square Drive, 10mm
- 830-4022** 1/4 inch Square Drive, 13mm
- 830-4026** 1/4 inch Square Drive, 14mm
- 830-4029** 1/4 inch Square Drive, 12mm

Square Ratches with Ratchet Handle

- Maintenance-free 1/2 inch sealed ratchet head that allows for longer lasting tool life and consistent quality in completed work
- Ultra-compact square drive head that fits a variety of metric and imperial socket sizes making it a versatile and essential piece of equipment for everyday usage
- Reversible switch for quick direction change with minimal user adjustment
- Ergonomic, soft-grip handle for superior grip and continued comfort
- Made from Chrome Vanadium Steel for ultra-durability and strength



253-116	1/2" Drive quick release reversible ratchet handle with black nylon injection grip (24 teeth pawl type)
253-172	3/8"
253-419	1/4 Inch

Dial Torque Wrench

- Manufactured to ISO6789
- Easy to read SI and Imperial unit analogue dial
- Clockwise and anti clockwise measurement is possible with double ended ratchet as standard
- Accuracy +/- 3% of reading



575-633	0.3-4Nm 1/4in drive
575-649	8-40Nm 3/8in drive
815-515	6-80Nm 1/2 Inch drive
815-521	20-215Nm 1/2 Inch drive

'Breaking' Ratchet Handle

- Designed to 'break' at a predetermined torque value, clockwise or anti-clockwise
- Reset by returning to in-line position
- Ideal for use in low torque applications, production or in restricted spaces
- BS EN ISO 9002:1994; A.Q.A.P.4 Edition 2 - Number 19 UM01; ISO 6789:1992
- CE marked in compliance with European Directives
- 1/4 Inch drive size



663-881	0.2-2Nm
663-897	1-10Nm

Drive Quick Release Reversible Ratchet Handle

- 48-tooth strong mechanism
- Switch pawl allowing the ratchet to be used in reverse
- Quick release allowing sockets to be changed quickly and efficiently
- Chrome vanadium steel for enhanced durability
- Soft grip handle for enhanced user comfort and control when in use



189-1329	1/2 Inch, 150 mm length
194-4594	1/4 Inch, 150 mm length
194-4595	3/8 Inch, 200 mm length

Mini Head Reversible Ratchet Handle

- Ratchet mechanism is reversible with all critical parts
- Heat treated for strength and durability
- Manufactured from Chrome-Vanadium Steel
- Black Chrome finish



668-5786	3/8 Inch Ratchet Spanner, Square
----------	----------------------------------

Drive Ratchet Handle

- Square drive shape
- Drive size of 1/4 in
- Chrome finish
- Extendable ratchet handle type
- Chrome-vanadium steel material
- Overall length of 200 mm



668-5834	1/4 Inch extendable handle
668-5843	3/8 Inch extendable handle
668-5846	1/2 Inch extendable

Insulated Torque Wrenches

- Each tool is injection moulded with Nylon 11 insulation
- IEC 60900:2004 specification
- Easy to read Window scale
- Reversible action



911-1522	3/8"
911-1531	1/2"

Drive Ratchet Handle

- Made from high grade alloy steel
- Ergonomically designed
- 72 teeth
- Ideal for industrial use



912-5404	1/4 Inch
912-5408	3/8"
912-5417	1/2"

Hexagon Nut Driver Set

- Made from chrome vanadium molybdenum steel blade material
- Hexagon tip type
- VDE/1000 V approved



182-9772	Set of 5 - Tip size of 6 mm, 7 mm, 8 mm, 10 mm, 13 mm
----------	---

Insulated Open Ended Spanners

- Each tool is injection moulded
- Nylon 11 insulation
- IEC 60900:2004 specification
- Warning thumb stop



911-1187	10mm
911-1193	13mm
911-1203	17mm

Insulated Ring Spanners

- Each tool is injection moulded
- Nylon 11 insulation
- IEC 60900:2004 specification
- Single Ended with 60° Offset Head
- Fully insulated across the entire body
- Heavy-duty spanners for use in any application
- Available in a various sizes



911-1281	13mm
911-1285	17mm
911-1288	10mm
911-1294	19mm

Insulated Ratcheting Ring Spanners

- The 72-tooth ratchet ring and gear produce a 5° rotation allowing it to function in tight spaces.
- Each tool is injection moulded
- Nylon 11 insulation
- IEC 60900:2004 specification



911-1308	10mm
911-1310	13mm
911-1326	17mm

Insulated Reversible Ratchet Spanners

- Each tool is injection moulded
- Reversible for added flexibility
- Nylon 11 insulation
- IEC 60900:2004 specification
- Available sizes: 13 x 17 mm, 17 x 19 mm, 21 x 26 mm or 24 x 30 mm



911-1487	13x17mm
911-1496	17x19mm

Combination Spanner - Matt Chrome

- DIN 3113, ISO 7738
- Ring end off set from shaft at 15°
- 31CrV3 steel
- Mirror chrome finish



192-3691	6mm, Metric, 110 mm Overall
192-3692	7mm, Metric, 110 mm Overall
192-3694	9mm, Metric, 130 mm Overall
192-3695	10mm, Metric, 140 mm Overall
192-3696	11mm, Metric, 150 mm Overall
192-3697	12mm, Metric, 160 mm Overall
192-3698	13mm, Metric, 170 mm Overall
192-3699	14mm, Metric, 180 mm Overall
192-3700	15mm, Metric, 190 mm Overall
192-3701	16mm, Metric, 200 mm Overall
192-3702	17mm, Metric, 210 mm Overall
192-3703	18mm, Metric, 220 mm Overall
192-3705	21mm, Metric, 250 mm Overall
192-3706	22mm, Metric, 260 mm Overall

Combination Spanner Ratchet Head

- Ideal for awkward and hard to reach areas thanks to the 180° movement of pivot-head
- Manufactured to ANSI Standard
- Chrome Vanadium Steel with a bright Chrome finish



487-185	11mm
487-189	8mm
487-214	19mm
487-218	17mm
487-220	10mm
487-264	13mm

Combination Spanner - Straight

- Ratcheting ring end
- Flat pattern
- 31CrV3 steel
- Mirror chrome finish



192-3707	8mm, Metric, 136 mm Overall
192-3709	11mm, Metric, 168 mm Overall
192-3712	14mm, Metric, 193 mm Overall
192-3713	17mm, Metric, 233 mm Overall
192-3714	19mm, Metric, 250 mm Overall

Combination Spanner

- Manufactured to ANSI standard from Chrome Vanadium
- Steel with a bright Chrome finish



495-3447	10mm, Metric, 161 mm Overall
495-3453	11mm, Metric, 168 mm Overall
495-3475	13mm, Metric, 180 mm Overall
495-3481	14mm, Metric, 193 mm Overall
495-3504	16mm, Metric, 207 mm Overall
495-3510	17mm, Metric, 227 mm Overall
495-3532	19mm, Metric, 250 mm Overall
495-3548	20mm, Metric, 260 mm Overall
495-3560	22mm, Metric, 295 mm Overall
495-3582	23mm, Metric, 295 mm Overall
495-3605	27mm, Metric, 362 mm Overall
495-3611	30mm, Metric, 394 mm Overall
495-3627	32mm, Metric, 429 mm Overall
495-3649	36mm, Metric, 510 mm Overall
495-3655	6mm, Metric, 124 mm Overall
495-3661	7mm, Metric, 129 mm Overall
495-3677	8mm, Metric, 136 mm Overall

Combination Ratchet Spanner

- Metric ratcheting combination spanners
- Manufactured to ANSI from Chrome Vanadium Steel
- Bright Chrome finish



487-034	13mm
487-038	17mm
487-040	22mm
487-044	19mm
487-056	10mm
487-208	8mm
487-270	24mm
487-286	30mm

Ring Spanner

- Manufactured to ANSI standard from Chrome Vanadium Steel with a bright Chrome finish
- Metric sizes



495-3908	17x19mm
----------	---------

C Hook Wrenches

- High-quality 6 Piece set, supplied complete in a PVC wallet
- Chrome plated with mirror finish
- Heat treated to HRC 42 to 48 Degrees



449-9864	6 Pieces, 8 - 19 mm
----------	---------------------

C Hook Wrenches

- Adjustable C hook wrenches for use in a wide range of maintenance and repair applications
- Thin profile for working in hard to access narrow spaces
- Drilled hole for lanyard attachment or easy storage
- Black finish



828-0239	19-51mm
828-0241	51-120mm
828-0245	Chain adjust wrench
828-0248	32-76mm

Adjustable Spanners

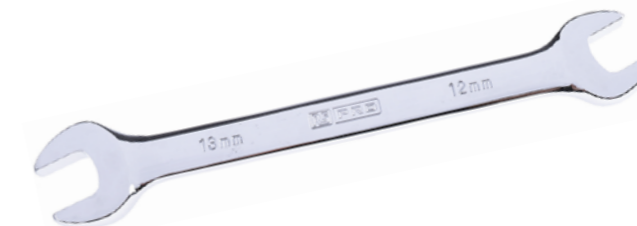
- High quality, phosphate finish
- Precision-hardened, anti-corrosion finish
- Manufactured to ISO6787 standards
- These spanners incorporate 15° angled head with thin parallel jaws



541-6573	20mm / 6"
541-6589	26.8mm / 8"
541-6595	30mm / 10"
541-6602	34mm / 12"

Open Ended Spanner

- Manufactured to ANSI standard from Chrome Vanadium Steel with a bright Chrome finish



495-3699	10x11mm
495-3706	12x13mm
495-3712	14x15mm
495-3728	16x17mm
495-3734	18x19mm
495-3740	20x22mm
495-3756	21x23mm
495-3762	24x27mm
495-3778	30x32mm
495-3784	6x7mm
495-3807	8x9mm
495-3813	17x19mm
495-3829	22x24mm
495-3835	24x26mm
495-3841	8x10mm

Multi-Purpose Cabinet Key

- 6.5mm and 8.1mm square sockets
- 6.4mm (¼ in) AF Hex socket
- 9.8mm triangular socket
- 9mm winged key drive
- Hex to ¼ in square drive adapter
- 7mm slotted blade
- Pozidriv drive screwdriver bit



439-3019 Chrome finish
439-3025 Zinc alloy finish

Universal Cabinet Cross Wrench Key

- Designed to operate the locking mechanisms of a wide range of systems including gas, electric and water cupboards as well as technical equipment including air conditioning, stop valves and mains consoles



841-7005 Aluminium 4-way Control Cabinet Key

Universal Double-Key Box

- Cabinet keys and in bits
- Multifunctional universal key box
- Large opening angle for good removal of the inserts
- Drive identification marking
- Ergonomically shaped for better handling
- Double-Key Length: 110 mm
- Weight: 165 g
- Fits nicely in your pocket or tool bag



228-1570 Fibre Reinforced Plastic 4-way Universal Key

Die-Cast Zinc Key

- Die cast zinc double bit key
- For use with quarter-turn cam locks



192-9656 Die Cast Key

Universal Control Cabinet Key

- JointKey
- 360° rotating cross key heads
- Drive identification marking
- Twist mechanism for different profiles
- Forms to a T-handle with higher torque
- Made of die-cast zinc and reinforced fibreglass plastic
- Dimensions: 130 x 38 mm



228-1568 8 in 1, Square socket (size: 5 mm, 6 mm, 7 mm, 8 mm), Triangle socket (size: 7 mm, 8 mm, 9 mm), Two Way Key: 3 - 5 mm

228-1569 13 in 1, Square socket (sizes: 5 mm, 6 mm, 7 mm, 8 mm, 9 mm), Triangle socket (sizes: 6 mm, 7 mm, 8 mm, 9 mm, 10 mm), Two Way Key: 3 - 5 mm, 1/4 in. Square, 1/4 in. Hexagon for bits

5 Piece Nut Driver Set

- Ergonomically designed handle, optimising balance between comfort and torque
- Comfortable soft grip
- Chrome Vanadium Steel, Matt Chrome
- EVA module



125-3062 Hex Nut Driver Set, 6 mm, 7 mm, 8 mm, 10 mm, 13 mm Tip, 125 mm Blade, 225 (6 mm C-PLUS Nut Driver) mm, 235 (10

7 Piece Nut Spinner Set

- Ergonomically designed handle, optimising balance between comfort and torque
- Comfortable soft grip



460-1758 Nut Driver Set, 4, 5, 5.5, 6, 7, 8, 10mm Tips, 226 mm Overall

Standard Handle Nut Spinners

- Solid, red plastic (cellulose acetate), fluted design handle offers a comfortable and safe grip and it is securely fitted to the shaft



460-1685 5mm
460-1691 5.5mm
460-1708 6mm
460-1720 7mm
460-1736 8mm
460-1742 10mm

Nut Splitter

- Supported nut sizes of up to 9/16 in Withworth, 5/8 in BSF (British Standard Fine) and 1 in AF (across flats)
- Meets American ANSI/ESD S20.20:2014 and British BS EN 61340-5-1:2007 electrostatic control standards.



539-570 Nut Splitter For Nut Sizes Up to 9/16 in Withworth, 5/8 in BSF, 1 in AF in

Soft Feel Handle Nut Spinners

- Ergonomically designed comfort grip handles
- Hardened steel heads



499-2329 7mm
499-2335 8mm
499-2341 5.5mm
499-2357 10mm
499-2379 5mm
499-2385 6mm
499-2391 4mm

Ball Joint Nut Splitter

- The parallel action of the cutter cracks nuts on one side, without damage to bolt threads
- Angle design with 360° rotating cutter allows use in difficult to reach locations
- Drop forged frame. Length 6 1/4 Inch for use on nuts with 1/8 in to 15/16 in across flats.



618-8831 Nut Splitter For Nut Sizes 1/8 to 15/16 in

Hydraulic Nut Splitter Kit

- Hydraulic nut splitter kit
- 10-ton hydraulic ram and ram attachment
- 5 cutting blades suitable for 3/8-inch, 1/2-inch, 5/8-inch, 3/4-inch and 1-inch nut sizes
- Plastic oil bottle
- Supplied with a red carry case
- Complies with ANSI/ESD S20.20:2014 and BS EN 61340-5-1:2007 Electrostatic Control Standards



423-6691 Nut Splitter For Nut Sizes 3/8 Inch to 1-7/8"

6 Piece Miniature Nut Spinner Set

- Miniature metric nut drivers
- Black anodized Carbon Steel blades
- Nickel plated Chrome Vanadium handles
- Hardened socket to 47 - 56 HRC
- Revolving heads
- Tommy bar included
- Supplied in plastic ABS case



541-6882 Nut Driver Set, Hexagon Tip, 3.0 x 25mm (Green), 3.5 x 25mm (Purple), 4.0 x 25mm (Brown), 4.5 x 25mm (Blue), 5.0 x 25mm (Dark Green), 1 x Tommy Bar

144-7965 101.6mm Jaw Capacity

SCREWDRIVERS, HEX & TORX KEYS

RS PRO screwdrivers, hex keys, and torx keys are essential tools for various applications involving screws and bolts for the professional tradesperson. The RS PRO range is designed to feature a range that covers all assembly, maintenance, and repair tasks across all industries and applications, including insulated VDE approved requirements.

Screwdriver Sets

- Precision hardened Chrome-Vanadium-Molybdenum steel
- 6 Piece Screwdriver Sets
- Improved handle ergonomics
- High force transfer with less power
- Reduced strain during intensive use



125-3101 4 x Slotted (3 x 0.75 mm, 4 x 100 mm, 5.5 x 125 mm, 6.5 x 150 mm), 2 x Phillips (PH1 x 80 mm, PH2 x 100 mm)

125-3102 4x slotted, 2 x Pozi

Classic Screwdrivers

- Features and Benefits
- Chrome vanadium steel blades
- Cellulose acetate handles
- Slot drive screwdrivers have parallel tips and chemically blackened blades, with a lacquered finish
- Supadriv™ and Phillips blades are chromium plated with chemically blackened tips
- Torque and gauge tests meet din standard
- Heat treated to HRC 55-60° for screwdriver blade



736-131 300x8mm

9 Piece Soft Feel Torx Driver Set

- Set consists of T6 to T30
- Zinc blasted and lacquer finished, hardened steel
- Supplied in a zipped wallet



499-2408 Torx Insulated Screwdriver Set, 9-Piece

Slotted Screw Gripping Screwdrivers

- Blades have a sliding sleeve operated by a plastic collar (just below the handle) which, when pushed down, causes the blade tip to split apart and firmly wedge against the sides of the screw slot.
- Blade thickness is defined in the released condition



547-953 3in 0.02in tip

547-969 8in 0.02in tip

547-975 6in 0.031in tip

547-981 8in 0.037in tip

6 Piece Electronics Screwdriver Sets

- Designed for delicate precision engineering and electronics applications.



125-3106 4 x Slotted Screwdrivers (H01: 1.5 x 40 mm, H01: 2.0 x 60 mm, H01: 2.5 x 80 mm, H01: 3.0 x 80 mm) & 2 x Phillips Screwdrivers (H02: PH00 x 60 mm, H02: PH0 x 60 mm)

125-3107 4 x Slotted Screwdrivers (1.5 x 40 mm, 2.0 x 60 mm, 2.5 x 80 mm, 3.0 x 80 mm) & 2 x Pozidriv Screwdriver (PZ00 x 60 mm, PZH0 x 60 mm)

125-3108 6 x Torx Screwdrivers (T5, T6, T7, T8, T9, T10)

Tin Cvd Screw Bits

- 1/4 Hexagon Shank
- 25 mm long
- TIN CVT Coating



125-0356 Ph2

125-0359 Pz2

125-0361 Tx10

125-0362 Tx15

125-0363 Tx20

Extra Hard Pozidriv Screw Bits

- 1/4" hexagon shank
- 25mm long
- Extra hard coating



125-0335 PZ2

Torsion Phillips Screw Bits

- 1/4" hexagon shank
- 25mm long



125-0338 Ph2

125-0340 Pz1

125-0341 Pz2

125-0351 Slotted 4.5x0.6mm

125-0352 Slotted 5.5x0.8mm

Impact Screw Bits

- 1/4" Hexagon Shank
- 25 mm long



125-0382 TX10

Torx Tamper Screw Bits

- 1/4" hexagon shank
- 25mm long



125-0370 TX10

125-0372 TX20

125-0373 TX25

Impact Screw Bits

- 1/4" Hexagon Shank
- 25 mm long



125-0379 PZ1

125-0380 PZ2

125-0381 PZ3

Torsion Phillips Screw Bits

- 1/4 Inch Hexagon Shank
- 25 mm long
- Longer torsion zone



125-0347 Tx30

125-0348 Tx40

Power Tool Cross Head Bit

- Long life bits with an extremely hard titanium nitride surface finish which absorbs torque peaks and prolongs bit life



449-9454 Phillips 90x1mm

449-9460 Phillips 90x2mm

449-9482 Pozidriv screwdriver bit, PZ1 90mm

449-9498 Pozidriv screwdriver bit, PZ2 90mm

449-9498 Pozidriv screwdriver bit, PZ3 90mm

Tamperproof Screw Bits

- Hexagon shaft section (1/4 Inch across flats) which enables them to locate into 1/4 Inch square drive adaptor.



516-334	Bit 1/4in, M5
542-116	Bit No.2
542-122	Bit No.1

Screwdriver Bit Sets

- Manufactured from high grade alloy steel
- Suitable for use with power tools



615-9170	8 Piece tamperproof
615-9209	32 Piece assorted
615-9215	8 Piece Torx
615-9221	8 Piece hexagon

Magnetic Easy Link/Easy Lock Bit Holder

- Inserting and removing the bit is possible with one hand motion
- 1/4 Inch hexagon shank
- 60mm long



125-0431	Bit Holder
----------	------------

Multi-Bit Screwdrivers

- Quick bit changes
- Strong durable Steel construction for long tool life
- Comfortable handle for extended use



573-384	4in1 set with interchangeable bits
241-7769	2in1 Stubby screwdriver

Impact Magnetic Nut Setter

- 1/4" hexagon shank
- 50mm long



125-0414	6mm
125-0415	7mm
125-0416	8mm
125-0417	10mm
125-0420	13mm
125-0421	1/4 Inch
125-0423	5/16"

Tamperproof Drivers

- Designed specifically to fit the System Zero® tamperproof screws.
- The drivers have a hardened steel head, forged shaft and Cellulose Acetate Fluted handles.
- High-quality materials ensure long life and safe operation even at the high torque.



516-344	ZE5 Handle Driver
---------	-------------------

Security Screwdriver Sets

- For use on all security Star type fasteners
- Supplied complete in a blow-moulded plastic storage case
- Manufactured from high grade chrome vanadium steel
- Set includes Torx Screwdrivers: T8, T9, T10, T15, T20, T25, T27, T30, T40 & Torx Keys: T8, T9, T10, T15, T20, T25, T27, T30, T400



499-2521	18 Piece Torx driver set
----------	--------------------------

Magnetic Nut Setter

- 1/4" hexagon shank
- 50mm long



125-0400	5.5mm
125-0401	6mm
125-0402	7mm
125-0403	8mm
125-0404	9mm
125-0405	10mm
125-0406	11mm
125-0407	12mm
125-0408	13mm
125-0409	17mm
125-0410	1/4 Inch
125-0412	5/16"
125-0413	7/16"

Penknife Hexagonal Sets

- Metric and imperial sets of hexagon keys which fold into a convenient penknife style handle
- Keys have blackened finish, steel handle is bright zinc-plated



537-754	9 Piece imperial long arm, 5/64" □ 1/4in
537-760	9 Piece metric, 1.5 □ 8mm
314-2977	7 Piece metric, 2.5 mm, 3 mm, 4 mm, 5 mm, 6 mm, 8 mm, 10mm
451-8993	7 Piece metric, 2.5 mm, 3 mm, 4 mm, 5 mm, 6 mm, 8 mm, 10 mm
451-9003	9 Piece imperial short arm, 0.05" □ 3/32in

L-Shape Hex Key Miniature Set

- Made from chemically blackened, chrome vanadium steel
- High-quality materials ensure long and safe service
- The set is supplied in handy compartmental plastic wallet
- 8 Piece set contains 0.7-4mm sizes



450-1002	0.7 □ 4mm
----------	-----------

Plastic Holder Sets

- Short arm L-shaped hexagon key sets in tempered chrome-vanadium steel, with chemically blackened finish
- Contains 10-pieces 1.5-10mm, supplied in plastic holder



537-748	10 piece L Shape Metric Hex Key Set, 1.5 □ 10mm
---------	---

L Shaped Hex Key Set

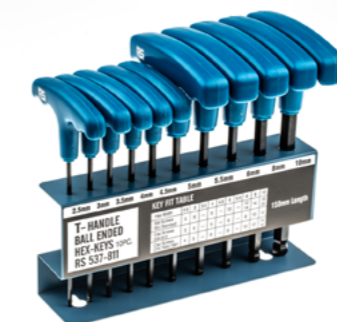
- Ball-Plus™ hex keys permit an entry angle up to 25° to work in hard-to-reach areas
- Covers sizes from 1.27mm to 10mm



542-3509	15 Piece 1.27-10mm
542-3515	9 Piece 1.5-10mm

Rack Mounted Driver Sets

- Available in metric or imperial each with bench mounting metal storage rack
- Keys manufactured from chrome-vanadium steel, with chemically blackened finish



537-811	Metric
---------	--------

15 Piece Hey Key Set

- Long arm hex key set made for professional precision.
- Polished finish
- Supplied with a plastic caddy, making it super easy when needing to be transported and for "on the go" jobs



833-5913	Kit contains: T-handle Hex keys - (metric) 2, 2.5, 3, 4, 5, and 6 mm Ball end hex Key - (metric) 1.5, 2, 2.5, 3, 4, 5, 6, 8 and 10 mm
----------	---

VDE Insulated Screwdriver Set

- 10-piece 1000V insulated screwdriver set manufactured with durable chrome-molybdenum vanadium steel and easy grip handles



Insulated Standard Screwdriver

- Each tool is injection moulded
- Nylon 11 insulation
- Ergonomic grip offers you comfort and control
- IEC 60900:2004 specification



911-1092	Terminal 75mm
911-1095	Terminal 100mm
911-1102	150x5x1mm
911-1106	200x5x1mm
911-1109	75x5x1mm
911-1112	Parallel Blades 4"
911-1115	125x6.5x1.2mm
911-1118	100x6.5x1.2mm
911-1121	Parallel Blades 6"
911-1124	Parallel Blades 8"
911-1128	Parallel Blades 10"
911-1130	Pozi 75x5xNo1
911-1134	Pozi 200x5xNo1
911-1137	Pozi 75x3xNo.0
911-1146	Pozi 150x8xNo3

253-015 Contains: slotted: 2.5; 3; 4; 5.5; 6.5mm; Phillips: PH0; PH1 PH2; Pozidriv: PZ0; PZ1

Insulated Nut Spinners

- 150mm stud clearance
- Each tool is injection moulded
- Nylon 11 insulation
- IEC 60900:2004 specification



911-1500	2BA
911-1503	0BA
911-1506	1BA
911-1512	4BA
911-1519	3BA
911-1525	8mm
911-1528	10mm

VDE Insulated Screwdriver Set

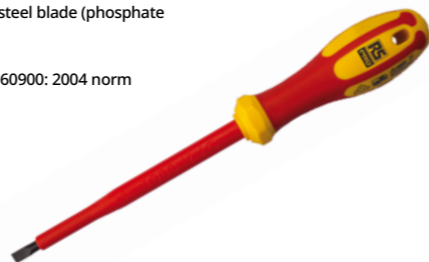
- Slotted and Pozidrive screwdrivers
- VDE approved tools for working in rigorous health and safety standards
- VDE voltage tester included
- Ergonomic soft grip handles



875-5812 7 Piece Phillips & slotted tip
875-5821 7 Piece Pozidriv & slotted tip

Insulated Screwdrivers

- For live working up to 1000 V ac or 1500 V dc
- Chrome Vanadium Molybdenum steel blade (phosphate finish)
- C-PLUS soft-grip handle
- Individually tested as per DIN EN 60900: 2004 norm



125-3078	2.5x75mm
125-3079	3x100mm
125-3080	3.5x100mm
125-3081	4x100m
125-3082	5.5x125mm
125-3083	6.5x150mm
125-3084	Ph1x80mm
125-3085	Ph2x100mm
125-3086	Pz1x80mm
125-3087	Pz2x100mm
125-3088	MOD1x80mm
125-3089	MOD2x80mm

HAMMERS & DEMOLITION

RS PRO hammers and demolition equipment are tools designed for the purpose of breaking, shaping, and dismantling you may face as a professional tradesperson or in a maintenance situation. Featuring Claw, Ball pein, sledgehammers and mallets.

Carbon Steel Ball-Pein Hammer With Fibreglass Handle

- Ball-pein hammer type
- Fibreglass handle material
- Carbon steel head material



125-0943	450g
125-0944	680g
125-0945	910g

RS PRO Fibreglass Curved Claw Hammer 20oz

- Fibreglass construction with drop forged hardened and tempered steel offering excellent durability and shock absorbent properties
- Black rubber grip handle moulded directly to the shaft, offering enhanced comfort and grip
- Durable hammer built to a professional standard
- Suitable for a variety of tasks
- Curved head ideal for wedging under nails and removing them
- Reduces user fatigue



537-007

Carbon Steel Hammer With Fibreglass Handle

- Carbon steel hammer
- Two tone colour (black and red) fibreglass handle
- Black satin finished
- High strength characteristics



125-0937	300g
125-0938	500g

RS PRO Rubber Mallet

- Features a shock-absorbing ash wood handle, for comfort over long periods of use
- Round rubber head
- Ashwood handle
- Versatile and suitable for many applications



539-104 550g

RS PRO Curved Claw Hammer 16oz

- Heat treated 16oz medium carbon steel claw head, offering excellent durability and strength
- Carbon steel tubular handle with black PVE moulded casing, providing excellent grip and comfort
- Durable hammer built to a professional standard
- Suitable for a variety of tasks



449-9858

RS PRO Lump Hammer

- 4 lb lump hammer
- Manufactured to BS876
- Black epoxy coated heads with polished convex faces
- Securely fitted and moisture-sealed, hickory shafts



251-542

PLIERS & CUTTERS

RS PRO has a range of pliers designed to be versatile across all aspects of gripping and manipulating, and cutting. Our range is focused to ensure we cover tradespeople in all applications, from construction and automotive repairs to electrical work and crafting and general purpose repair and maintenance, including insulated VDE approved tools.

Stainless Steel Pliers

- 25mm long stainless steel jaws
- Fitted with moulded plastic grip with lightweight return spring
- Overall length 130mm



- 536-335 Half round
- 536-341 Serrated flat
- 536-357 Bent nose

General Purpose Electronic Pliers

- Strong pressed steel frame
- Riveted lap joint
- Precision ground 3mm jaw
- Ribbed soft plastic grips and lightweight return spring
- Integral stop



- 606-529 Needle nose
- 606-535 Flat
- 606-541 Serrated jaw

Din Standard Circlip Pliers

- Fitted with red PVC vinyl dipped covered handles
- External types incorporate return springs
- Black oxidised finish



- 541-6753 Internal straight 3-10mm
- 541-6769 Internal straight 8-25mm
- 541-6781 Internal bent 3-10mm
- 541-6826 External straight 3-10mm

Din Standard Pliers

- Soft grip dual component handles for ease of use
- Box joint construction
- Manufactured from high-grade steel
- Ergonomically designed sleeves for comfort and effortless use.
- Made in Germany



- 161-142 Round nose

Electronic Round Nose Pliers

- Manufactured from high carbon steel, with smooth, tapered, round jaws



- 847-3730 Round nose 130mm
- 847-3780 Side cutters slim
- 847-3784 Side cutters
- 847-3816 End nipper

Cr-V Snipe Nose Pliers

- Made from chrome vanadium steel
- Ergonomic handles, make an excellent choice for electricians, designers etc.



- 847-3765 120 mm Overall, Straight Tip

VDE Water Pump Pliers

- Constructed from high grade steel with mirror polish and slip guard
- Two component handle for ease of use
- VDE tested and confirms to IEC 900 1000 V



- 496-997 Combination pliers
- 497-007 Diagonal cutter

Plier Sets

- Special tool steel Polished finish (electrofilmed)
- DuoTech soft grip handles
- VDE Approved
- G10 - ISO 5745
- G12 - ISO 5749



- 125-3094 2 Piece Set - Diagonal cutter & combination plier
- 125-3095 3 Piece Set - Diagonal cutter, long nose plier & combination plier
- 125-3096 5 Piece Set - Diagonal cutter, combination plier, 2 x slotted plier, 1 x Pozzi plier

Diagonal Cutters

- Special tool steel; Chrome finish
- DuoTech soft grip handles
- VDE Approved
- ISO 5749, G12 Series



- 125-3068 140 mm
- 125-3069 160 mm
- 125-3070 180 mm

Insulated Pliers

- Special tool steel and chrome finish
- DuoTech soft grip handles
- VDE Approved, ISO 5746, G10 Series



- 125-3065 160mm
- 125-3066 180mm
- 125-3067 200mm

Insulated Pliers

-



- 125-3072 160mm long nose
- 125-3073 200mm long nose
- 125-3074 200mm bent nose

Insulated Combination Pliers

- Each tool is injection moulded
- Nylon 11 insulation
- Ergonomic grip offers you comfort and control
- IEC 60900:2004 specification
- 200mm



- 911-1033 Combination
- 911-1051 Bent nose

VDE Insulated Pliers

- 45° angled blades
- Ergonomic handles
- Ideal for precision work with soft wire



- 847-3800 Long nose

Insulated Water Pump Pliers

- Ideal for live working up to 1000Vac or 1500Vdc
- 9 position adjustment
- Chrome Vanadium steel
- Phosphate finish
- Soft-grip handles



125-3076 250mm - Multigrip Slip Joint

Box Joint Pliers

- Hardened and tempered throughout for strength and durability
- Narrow/slim heads are ideal for use in confined spaces
- Serrated jaws give positive grip on round, square, triangular, flat and irregular surfaces
- PVC Handle Grip Material
- DIN 5231 D



541-7059 250mm
541-7116 300mm

Utility Pliers

- Right angle teeth grip in all directions
- Undercut tongue and groove positioning channel with 3 to 12 different adjustment dependant on size to prevent slipping
- Reinforced edge to minimise stress breakage
- Uses high carbon C1080 steel for superior performance
- Specially coated for ultimate rust prevention



216-6039 400mm
325-6228 500mm

Soft Jaw Utility Pliers

- Adjustment is easy because of a sprung adjuster mechanism, which also prevents the adjusted pliers slipping to another position
- Nylon replaceable jaws are available separately as a set of two on 734-012



734-006 Water Pump Pliers, 250 mm Overall

Water Pump Pliers

- Pliers made from chrome-vanadium steel
- Powerful and robust multiple slip-joint pliers
- Self-locking pliers with anti-slip action
- Narrow jaw profile
- Non-slip grips and hardened jaws.



668-5900 250mm DRV handle
668-5938 250mm

Water Pump Pliers

- CR-V steel blade with PP/TPR insulated grip (red/yellow)
- Black body with polished jaw and box joint
- VDE GS approved



847-3771 240mm

VDE Water Pump Pliers

- Constructed from high grade steel with mirror polish and slip guard
- Two component handle for ease of use
- VDE tested and confirms to IEC 900 1000 V



496-987 Water pump pliers

Micro-Tek ESD Shears

- Strong and robust
- Size and shape reflect the latest advances in enhanced ergonomics



847-2961 Kevlar fibre optic
847-2967 Mini

Diagonal Cutters

- Duo Tech soft grip handles
- Polished finish (Electrofilmed)
- DIN/ISO 5749, TS 11071



875-5792 140mm
875-5795 160mm
875-5799 180mm

ESD Side Cutters

- Suitable for SMD and leads
- Facilitates optimum access
- Spring action



864-0772 4.5"
864-0785 5"
864-0798 5" plus safety clip
864-0805 5" heavy

Diagonal Cutters

- Suitable for cutting all wires (Inc. piano wire).
- Polished finish.
- DuoTech softgrip handles.
- DIN/ISO 5749, TS 11071



875-5806 Power 180mm

3 Piece Locking Pliers Set

- Ideal for tightening, clamping, twisting and turning
- Ideal for precision work and hobbies
- Hardened teeth are designed to grip from any angle
- Classic trigger release
- Nickel plated



847-3762 Chrome Molybdenum steel
847-3768 Chrome Vanadium steel

Interchangeable Multi-Position Circlip Pliers

- Cushion-grip handles and spring loaded for faster comfortable operation



Combination Pliers

- Optimum cutting edge geometry
- Precision milled
- Heat treatment to exacting standards
- Redesigned DuoTech grips



- 875-5761 160mm
- 875-5767 140mm
- 875-5770 180mm
- 875-5773 200mm

- 182-436 External/internal 6.4-48mm/6.4-25.4mm
- 541-7267 External 6.4-25.4mm

Electrician's Combination Pliers

- A heavy duty set of pliers with integral cutter ideal for any electricians toolbox
- Ergonomic non-slip handles with finger guards
- Handle insulation proof tested to 10kV ac



Electronic Pliers

- VDE Tested
- Strong and Hardwearing body
- Specially designed ergonomic handles



- 847-3724 Radio 200mm
- 847-3730 Round nose 130mm
- 847-3737 Snipe nose 130mm
- 847-3752 Snipe nose 120mm
- 847-3756 Radio 140mm

- 487-230 150mm

Long Nose Pliers

- The Unigrip ergonomic handles, make these pliers suitable for cutting soft and hard wire



General Purpose ESD Pliers

- Ergonomic, comfortable grip
- Meet standard cutting and load test
- Serrated jaw



- 487-090 160mm

- 875-5802 200mm
- 875-5809 160mm

High Carbon Steel Long Nose Pliers

- Ideal for electricians or tradesmen that need to grip and cut wires, bend loops or grip small objects



- 847-3793 Long nose
- 847-3803 Bent nose 200mm

Engineers Pliers

- Induction hardened with a natural finish to ensure a long, reliable working life
- Ergonomically designed bow handles with PVC grip provide maximum leverage and comfort



- 541-7043 Snipe nose 160mm
- 541-7071 Snipe nose 120mm
- 541-7093 Radio 140mm

Insulated Plier Set

- Various ranges of quality assured tool sets for addition to tool cabinets



- 833-5931 Contains 180mm Combination Pliers, 160mm Diagonal Cutters, 160mm Long Nose Pliers

Plier and Wrench Tool Module

- Box jointed waterpump pliers with PVC sleeves for a firm grip
- Locking grip plier with fine adjustment. Ideal for automotive or welding applications
- Adjustable wrench with scale marked onto jaws for easy adjustment and setting. Phosphated finish for protection and long tool life
- Bright red foam helps identify missing parts quickly
- Foam tool modules are designed for regular easy removal from drawers



- 833-5938 3 Piece Set - 250mm Waterpump Pliers, 240mm Grip Plier, 250mm Adjustable Wrench

Electronics Tool Kit With Foam Inlay

- Phosphated driver tips for corrosion protection, increased strength and longer tool life
- Bright red foam compartments help small parts and fixings stand out
- Tool storage - foam tool modules are designed for regular easy removal from drawers



- 833-5919 10pc Precision Plier and Screwdriver Set

300mm Circlip Plier Set

- 4 Piece Circlip Plier Quality Set for inserting and removing circlips
- Ergonomic Red PVC grip handles allow for easy and smooth action
- External Pliers have a sprung design to help handles open
- Supplied with a Foam Tool Module to ensure the tools are kept tidy
- Made from Chrome Vanadium Steel



- 833-5929 External Circlip Pliers (Straight with Spring), External Circlip Pliers (Bent with Spring), Internal Circlip Pliers (Straight), Internal Circlip Pliers (Bent)

2 Piece Electricians Tool Kit With Foam Inlay

- Various ranges of quality assured tool sets for addition to tool cabinets



- 833-5966 2pc Climper and Stripper Set

3 Piece Plier Set, 250 Mm Overall

- 3 Piece Plier Quality Set with Polished Finish
- Ergonomic Soft grip handles allow for easy and smooth action
- Smooth Operating Action reduces the fatigue of the user
- Serrated Jaws for an excellent prolonged grip
- Supplied with Foam Module ensuring the tools are kept tidy



- 833-5972 Contains: 180 mm Combination Pliers, 160 mm Diagonal Side Cutters & 160 mm Long Nose Pliers

SANDING, FILING & POLISHING TOOLS

RS PRO sanding, filing, and polishing tools are essential to the any professional tradesperson's tool box. The range is designed to provide choice and flexibility for shaping, smoothing, and finishing all surface requirements.

Heavy Duty Scraper Deburrer

- Supplied with a 7 x 120mm triangular blade, ground at both ends for prolonged life
- Wear resistant 'Acetal' handle has a quick change blade collet
- Blade suitable for use on most ferrous and non-ferrous metals and can be easily positioned and locked into the handle at any required length



244-6745 Deburrer

6 Piece Diamond Needle File Set

- Very high quality industrial standard needle files coated with diamond grit enabling them to file materials such as tungsten carbide, ceramics, carbon, glass, hardened steels etc.
- File length is 160mm
- Contents: round profile, half round profile, 3 square profile, square profile, flat/warding profile and hand profile



732-145 160mm Needle File Set

Swiss Pattern Needle File Set

- Comes supplied with flat/warding (barette), knife, round, half flat, hand & square files
- Handle also supports Noga scraper blades
- Wide range of file types to ensure that your application is covered



521-908 160mm, Second Cut Needle File Set

Needle Files

- High quality precision needle files for the fine abrasion, profile cutting and finishing of many common workshop materials
- Each file has a different cross-section as shown and except for the 'hand' and 'warding' which are squared off, all taper to a fine point
- Overall length 160 mm, cutting face 28 teeth per cm (cut no. 1)
- Round file has a diameter of 6.35 mm (0.25 in)



541-6911 Hand

Bastard Engineers File Set

- Ergonomic grip
- Lanyard hole in handles for working at height
- Bright red foam helps identify missing parts quickly
- Foam tool modules are designed for regular easy removal from drawers
- 5x 200mm Bastard Files (Cut Hand, Half Round, Round, Square, Three Square Engineer File.)
- 6x 160mm Needle Files (Flat, Hand, Half Round, Round, Square, Three Square File Needle File.)



833-5953 11pc Standard and Needle File Set

RIVETERS

The RS PRO range of riveters is designed to provide a range of high quality tools to meet your material joining needs, in all industries from, construction, carpentry, upholstery, paper and packaging, automotive to fabrication.

Plier Type Hand Rivet Gun

- Durable aluminium body construction offering corrosion resistance and durability
- Ideal for use with aluminium, steel and stainless steel rivets
- 4 interchangeable nose pieces to accommodate different size rivets - can be used with rivet sizes 2.4, 3.2, 4.0 & 4.8 m
- Spanner included to quickly change nose pieces
- Forged steel handle with ergonomic grip for comfort and control



192-3666 Hand Rivet Gun For 2.4, 3.2, 4.0, 4.8 Mm Rivets

Standard Riveter

- High-quality steel handles & body
- Case-hardened steel nose
- Rivet gripping action
- Suitable for 3.2 mm, 4 mm rivets
- Rivet head storage in handle
- Mandrel kit required for use with M3 fittings



487-157 Plier Type Rivet Tool

5 piece Hand Riveter Set

- Hand riveter and rivets (20 mm x 2.4 mm, 20 mm x 3.2 mm, 20 mm x 4.0 mm, 20 mm x 4.8 mm)
- Foam inlay storage type
- This product is not VDE approved



833-5969 5pc Hand Riveter Set

360° Swivel Head Riveter

- Manufactured from chrome steel with hardened steel jaws
- Capable of riveting at any angle through 360°
- Fitted with soft-grip rubber handles



487-141

TESTING, MEASURING & MARKING

RS PRO Measuring and marking equipment are essential tools in various industries and DIY projects, functioning to accurately determine dimensions, distances, and angles. The RS PRO range of tools will ensure precision, consistency, and proper alignment in all industries and applications.

Tape Measure

- Self-locking mechanism allows blade to be extended smoothly
- Push button allows blade to be retracted smoothly
- Nylon coated blade for maximum durability
- Impact resistant rubberized case



254-6241 5m

LCD Distance Meters

- Record up to 20 points of reference without having to move back-and-forth
- Lightweight (100 g), pocket-sized digital measure for easy transportation
- Battery display with automatic shutdown build-in function after inactivity of 3 minutes



126-8821

150mm Digital Caliper

- A digital vernier caliper with stainless steel rule & jaws, and offering 4 way measurement
- Measurement range of 0mm and 150mm and a resolution of 0.0005in, 0.01mm
- Metric / Inch conversion button



243-6615 150 mm Capacity

High Impact Spirit Level

- Sturdy design with strong non-magnetic base
- Electrostatic powder coating
- Frame constructed from aluminium
- 2 Vials - horizontal and vertical
- Accuracy ±0.5 mm/m



851-3541 250mm

Multifunctional Laser Level

- Self-levelling laser
- Single button control
- Green beam laser projects from multiple angles
- Professional accuracy
- Unlock and lock pendulum
- Rotatable 360-degree with magnetic 'L' mount
- Soft-grip, light weight design
- Easy carrying - supplied with a nylon bag
- AA batteries included
- NOT recommended for outdoor use



230-7854

Pocket Level

- 0.5 mm/m (0.029") accuracy
- Ultrasonic welded block vials
- Rigid aluminium box section
- Shockproof end caps
- Built-in magnets



194-4705 120mm

Letter & Number Punches

- Hand punches for permanent identification marking
- Hardened and tempered to give long life and maximum security
- Capable of indenting material up to 40 Rockwell C hardness
- Supplied in sturdy plastic boxes



- 251-687 5mm engraving set A - Z, &
- 251-693 6mm engraving set A - Z, &
- 251-738 3mm engraving set A - Z, &
- 251-744 8mm engraving set A - Z, &
- 251-788 6mm engraving set 0 - 9
- 251-794 8mm engraving set 0 - 9
- 251-801 4mm engraving set A - Z, &
- 875-4714 9 Piece 2.5mm number punch, 0 - 8
- 875-4718 27 Piece letter steel stamp 2.5mm
- 875-4720 27 Piece letter steel stamp 3.0mm
- 875-4724 9 Piece 4.0mm number punch, 0 - 8
- 875-4727 9 Piece 3.0mm number punch, 0 - 8
- 875-4730 27 Piece letter steel stamp 5.0mm
- 875-4733 27 Piece letter steel stamp 4.0mm
- 875-4736 9 Piece 5.0mm number punch, 0 - 8
- 875-4742 27 Piece letter steel stamp 6.0mm
- 875-4746 9 Piece 8.0mm number punch, 0 - 8
- 875-4749 9 Piece 6.0mm number punch, 0 - 8
- 875-4755 27 Piece letter steel stamp 8.0mm

8 Piece Parallel Punch Sets

- High-quality rivet punches forged from steel with a plastic storage case with size markings
- Chemically blackened finish offering prolonged life and corrosion resistance
- Manufactured using durable steel
- Tools are 4"



875-4764 105mm

6 Piece Parallel Pin Punch Sets

- High-quality rivet punches forged from chrome-vanadium air-hardened steel, in plastic stand
- Multi-coating of impact head virtually rules out chipping and swelling
- Polished cylinder shanks
- Tools are 150mm in length
- Octagonal, gold-painted grip shanks



456-3640 3, 4, 5, 6, 8, 10mm
505-8688 2, 3, 4, 5, 6, 8mm

3 Piece Combination Punch Set

- Made of tool steel
- Black oxide finish for rust prevention
- Knurled body for better grip
- Points precision ground
- Supplied in fitted case



875-4758 105mm

Spring Tension Pin Punch Sets

- 6 punches for inserting and extracting spring tension pins
- Raised pilot end for locating into pins
- Suitable for spiral wrapped spring tension pins
- Made from tool steel with hardened tips
- Supplied in vinyl wallet



600-896 Spring tension set
626-1497 Punch set

Dot Number & Letter Punches

- Numbers and letters in one 36 Piece set
- Character and size marked on each stamp
- Hardness: HRC 58-60
- Hardened and tempered to give long life



- 875-4770 4.0mm
- 875-4774 5.0mm
- 875-4777 3.0mm
- 875-4780 10.0mm
- 875-4783 6.0mm
- 875-4786 8.0mm

6 Piece Measuring And Cutting Tool Kit With Foam Inlay

- Six pieces
- General-purpose compact workshop measuring and cutting toolset
- Contains precision measuring tools and heavy-duty cutting tools
- The bright red foam helps identify missing parts quickly
- Foam tool modules are designed for regular easy removal from drawers



833-5944 Kit contains: Electricians scissors, Straight snip, Snap-off utility knife, Measuring tape, Stainless steel ruler, Leaf metric feeler gauge

Scribes

- Tungsten Carbide tipped scribes are intended for use on hard or abrasive materials which would rapidly blunt ordinary HSS scribes, e.g. stainless steel, anodised aluminium, ceramic, glass, etc.
- Single and double ended options



394-184 Double tipped
394-190 Straight
394-194 Retractable fine point

RS12 Digital Multimeter

- Manual ranging, 2000 count DMM that measures capacitance, voltage, current, resistance and temperature



123-1939

RS380 Clamp Meter

- 400A AC auto-ranging clamp meter with AC and DC voltage, resistance, continuity functions
- Uses non-contact detection with Overvoltage Category III 600 V protection
- Supplied with test leads, carrying case, temperature probe, AAA 1.5 V batteries x2 and user manual



123-1935

Earth & Ground Resistance Tester

- Meets IEC10101, CATIII 1000V
- Large dual display with back light & Low Battery Indication
- Test hold function for easy operation
- Zero Automatic adjustment
- Sampling Rate: 2.5 times per second
- Includes x 6 "AA" batteries, test leads and carrying case



144-5339 ET5300, 2kΩ

Magnetic Field Indicator / Solenoid Tester

- Powerful red light in the tip to indicate the presence of a magnetic field.
- Easy to use.
- Solenoid valves in pneumatic and hydraulic control equipment can easily be tested.



375-5422

External Micrometer

- External metric micrometer set
- Minimum measurement of 0 mm
- Maximum measurement of 150 mm
- Resolution of 0.01 mm
- Accuracy of ±0.004 mm
- Set contains six micrometers, setting rods and adjustment tools



705-1213 Range 0 mm □150 mm

Thickness Meter

- AAA battery type
- LCD display type
- Maximum measurement of 1350 μm (Probe F & Probe N)
- Minimum measurement of 0.3 mm (Probe N), 0.5 mm (Probe F)
- Operating temperature range of 0°C to +40°C
- Coating thickness gauge



192-4382 0.3mm - 1350μm, LCD Display

Handheld Digital Multimeter

- Digital multimeter
- Compact and handheld
- Measures AC/DC Voltage, AC/DC current, Resistance, Diode test, Continuity, Capacitance Frequency and Temperature
- Non-Contact AC Voltage detector
- Long service life
- Battery type: 2 X AAA 1.5V



264-7228 RS-927A, True RMS, 10A ac Max, 10A dc Max, 600V ac Max

Wall Scanner 3 in 1 Stud, Metal and AC Voltage Finder

- Detects metal or wooden studs from 0-38mm through drywall
- Live AC wires can be detected from 0-50mm through drywall
- Handheld and powered by a 9V battery
- Supplied with a 9V battery and gift box



193-8684

Insulated Test Lead Set

- These replacement multimeter leads are 1.2m long, and rated 10A
- Complies to EN61010 1000V CATII



340-2421

Proximity Sensor Tester

- Handy battery powered proximity sensor tester ideal for checking 3 / 4 wire DC sensors while in place
- Supports NPN & PNP variants
- Supplied with batteries ready to use



839-9875

Miniature Insulated Crocodile Clips

- PE Insulated material - provides full insulation with good plug compatibility
- Nickel-Plated Steel - offers good resistance to corrosion and is widely used in industrial crocodile clips
- Choice of colours - red and black clips are available



483-843 Red

483-859 Black

Contact/Non-Contact Tachometer

- Designed with a durable and robust housing for use in challenging environments while offering an intuitive and easy to use interface for optimum ease of use
- Built-in memory allows 40 reading memories to be stored



193-8688

True RMS AC/DC Clamp Meter with Dual Type K Inputs

- Large, easy-to-read backlit LCD display for greater functionality, the clamp meter is also ideal for use in low light environments
- Comes with a 9 V battery, test leads and a temperature probe



200-3702

Digital Thermohygrometer

- Large LCD display and clear measurement parameters, allowing for easy reading of measurements
- Temperature from -10°C to +60°C and a hygrometer range 0 to 99% RH



195-9129 108mm x 103mm x 25mm

CABLE, CONNECTOR & CRIMPING TOOLS

RS PRO cable, connector, and crimping tools serve important roles in the installation, maintenance, and repair of electrical and data communication systems. These tools are designed to ensure secure and reliable connections in various applications.

Hand Ratcheting Crimp Tool

- Ergonomic non-slip main handle and low friction moving handle ensure a comfortable hand grip
- Provides two-hand grip in the final phase of crimping, increasing comfort and productivity
- Full cycle crimp mechanism to ensure consistent, reliable crimp



863-1623 Crimp Tool for BNC, TNC, N, Ethernet and Thinnet Connectors

Automatic Wire Stripper

- Precision carbon steel laminated stripping blades
- Compact pistol-grip design for increased control and a smooth stripping action
- Adjustable sliding wire stop to preset exact stripping lengths
- Shielded cutter for safety



382-2847 0.08 to 2.5mm stripping range
384-7385 6 to 16mm stripping range

RS PRO 1000V Insulated Electrician's Knife

- 1000V approved cable knife, ideal for use on or around energised systems
- Sickle shaped strong and durable stainless-steel blade for long lasting blade life and can easily and efficiently cut the cable sheath without the risk of damaging the cable



829-6518

Spiral Wrapping Installation Tools

- Assists with the installation of spiral or split wraps used in cable bundles or on electrical harnesses
- Made from polypropylene (PP)
- Available in multiple sizes applicable to the cable wrap



204-4433
204-4435
204-4436
204-4438

Cable Tie Gun

- Metal construction
- Adjustable tension
- Tension indicator
- Suitable for tensioning and cut for cable ties



206-1753 2.4 □ 4.8mm Capacity

6 Piece ESD Tool Kit with Case

- Ideal for handling wires and components in applications and electronic repairs, servicing and maintenance.
- High-quality tools
- Tool storage: Plastic box
- ESD capacity between 6-9 OHM
- With plastic box to storage
- Long nose pliers for easy operation at deep and narrow working space
- Diagonal cutting pliers suitable for copper wire below dia.1.3mm



864-0870 PH0X50, PH1X50, SL2.0X50, SL3.0X50 --50MM
1 pcs130mm long nose pliers
1pcs115mm diagonal cutting pliers

ESD Safe Micro Needle Nose Pliers

- Anti-reflective phosphating surface treatment
- Steel Thickness of 2mm
- Weight of 60g



249-8673 136mm Overall Length
249-8656 138mm Overall Length

ESD Safe Micro End Cutter

- An ESD Micro End Flush Cutter with a narrow jaw designed for precision, straight cuts and is ideal for use in hard to access areas due the narrow head design.
- Anti-reflective phosphating surface treatment
- Maximum cut of 0.81mm (20AWG Copper Wire)
- Cutting force of 3kg
- Steel Thickness of 2mm



238-0814 132mm Overall Length

ESD Fine Curved ESD Safe Tweezers

- A high quality ESD tweezer designed for accuracy and precision and layered with an ESD Safe powder coating for use on or around sensitive equipment.
- Constructed from Low Carbon Austenitic Steel for excellent strength and durability, strong corrosion, chemical resistance and anti-magnetic properties. Reliable, accurate and constructed to last.
- Fine curved tweezer tips
- ESD coating



238-0708 120mm Overall Length

General Purpose ESD Pliers

- Pressed steel frames
- Riveted lap joints
- Precision ground 3mm steel jaws
- Ribbed soft plastic grips and lightweight return spring
- Integral stop prevents handles opening too far



245-0536 Needle nose
245-0558 Serrated jaw

ESD Pliers

- ESD Protected for conducting away static electricity
- All pliers are of box joint design
- Manufactured from high grade steel
- Smooth non-serrated jaw



161-063 Flat nose 120mm
161-079 Snipe nose 120mm
864-0782 Flat nose 6"
864-0788 Long nose 6"
864-0791 Bent nose 6"
864-0794 Round nose 5.5"

ESD Safe Screwdrivers

- Professional and high quality ESD slotted screwdrivers for use with and around sensitive equipment.
- Constructed from Chrome-Vanadium Molybdenum Steel for excellent strength and durability
- Bi-material ergonomic handle to reduce hand fatigue over extended use.
- Complete with a rotating cap enabling quicker more precise action and blackened ends for tip protection.



249-8665 175mm Sotted Precision Screwdriver (2.5mm x 75mm blade)
249-8663 160mm Phillips Precision Screwdriver (PH00 x 60mm blade)

THREADING TOOLS

RS PRO threading tools such as taps and dies come in a variety of different formats, and each will have its own particular strengths in specific scenarios.

Iso Metric Coarse Tap Set

- Set of 3 contains taper, second and plug tap
- Supplied in polypropylene case



215-524	M12x1.75
215-530	M6x1.0
215-546	M10x1.5
215-552	M3x0.5
215-568	M8x1.25
215-574	M5x0.8
215-580	M4x0.7
427-913	M2-M6

Bspf Tap Set

- One taper tap with a 4° chamfer and one plug tap with 23° chamfer per set
- Supplied in polypropylene tubes



152-160	3/8"
152-176	1/4 Inch
152-378	1/2"

Workshop Range Tap & Die Sets

- HSS set with bar type wrench and ratchet wrench for small tap size
- Metal storage cases with hardwood partition trays



300-7442	M6-M12
300-7458	M6-M20
300-7464	1/4-1/2 UNC
300-7470	1/4-3/4 UNC
300-7509	1/4-3/4 UNF

Iso Metric Tap Set

- Set of 2 taper and plug tap
- Supplied in polypropylene case
- Course thread



151-858	M6
152-435	M16
749-5682	M4
749-5688	M3
749-5691	M5
749-5694	M6

Combined Drill/Tap/Countersink Set

- Drills incorporate a tap and countersink/ deburr section
- Set contains one of each M3, M4, M5, M6, M8 and M10
- Housed in a plastic case



340-6934 Tap & Drill Set, M3 to M10 Thread

Spiral Point Tap Set

- 7 Piece set contains M3-M12 sizes
- Manufactured from high-speed steel (HSS), ensuring excellent durability
- Suitable form hand and machine application
- Durable metal storage case



427-963	7 tap set: M3, M4, M5, M6, M8, M10, M12
506-4267	18 Piece M3-M10 HSS
668-1122	44 Piece M3-M12 HSS
668-1129	54 Piece M3-M20 HSS
668-1138	32 Piece M3-M12 Carbon Steel

Hss Die Nuts

- Manufactured to BS1127; 1950 standard
- Ideal for use in areas where access is limited



424-213	M10 1.5mm
424-217	M12 1.75mm
424-223	M8 1.25mm
424-229	M6 1.0mm
424-235	M5 0.8mm
424-239	M4 0.7mm

Metric Dies Left Hand Thread

- High quality, High Speed Steel dies
- Metric coarse thread
- Polypropylene storage case



668-0750	M6x1.0mm
668-0753	M4x0.7mm
668-0766	M12x1.75mm
668-0769	M8x1.25mm

Die Stock

- Chemically blackened finish
- Chromed handles



444-885	1 5/16 inch
444-895	1 inch
300-7363	25mm
359-6677	13/16 inch

Hss Rethreader

- Use with switchboxes and faceplates
- For cleaning out and cutting damaged threads



125-3090	M3.5x0.6
125-3091	M4.0x0.7

Hss M2 Grade Dies

- Precision engineered, split form dies made to BS1127:1924 for machine or manual operation



215-596	M6x1.0mm
215-603	M8x1.25mm
215-619	M10x1.5mm
215-625	M12x1.75mm
215-647	M5x0.8mm
215-653	M2x0.4mm
215-669	M2.5x0.45mm
215-710	M10x1.0mm
215-726	M10x1.25mm
215-732	M12x1.0mm
215-748	M12x1.25mm
215-754	M12x1.5mm
215-811	M8x1.0mm

Die Nut Set

- Carbon steel die nuts to DIN standard
- Supplied in a wooden box



300-7515	5 piece metric M5-M12
300-7521	5 piece UNF 1/4in-1/2in
300-7537	5 piece UNC 1/4in-1/2in
506-4318	7 piece metric M3-M12

Metric Die Set

- High quality high speed steel ISO dies
- Set contents: M3, M4, M5, M6, M8, M10, M12 dies and die-cast die holder



668-0775 8 Piece Die Set, M3 - M12 Dies

Metric Thread Repair Kit

- Includes HSS drills, taps, mandrels, tang break off tools, thread inserts and more, providing everything you need to repair threads for various applications
- Other thread sizes available on the RS website



917-2482	M4-M10 5 piece
917-2491	M5-M12 5 piece
917-2494	M2.5-M6 5 piece
917-2498	M3
917-2501	M16
917-2505	M6
917-2508	M4
917-2511	M8
917-2514	M5
917-2517	M2.5
917-2520	M12
917-2523	M10

SPECIALIST TOOLS

RS PRO offer a variety of specialist tools used by professionals that have less generic, more specific uses. These include plumbing, woodworking, construction, automotive and vehicular maintenance tools, such as hand drills, hand planers, pipe benders or tyre depth gauges.

Hydraulic Bearing Puller

- Tungsten Carbide tipped scribes are intended for use on hard or abrasive materials which would rapidly blunt ordinary HSS scribes, e.g., stainless steel, anodised aluminium, ceramic, glass, etc.
- Single and double ended options



349-7249 8 Piece 10 Ton Puller Set

349-7261 25 Piece

Hydraulic Puller Set

- Heavy duty master set of gear pullers and bearing splitters
- 8 Ton maximum hydraulic ram and forged puller arms and bearing splitter
- Replacement of gears, bearings, and other power transmission components
- Supplied complete with carrying case



349-7227 2/3 Jaw

3-Jaw Puller

- Chrome vanadium 3-jaw puller available in 100, 150 and 200mm capacities



349-7299 100mm

349-7306 150mm

349-7312 200mm

Heavy Duty Spring Hook

- Ideal for spring removal
- Stainless steel shaft
- Pulling capacity up to 30kg



405-3294 1 pcs 380 mm 30kg Pulling Capacity Spring Hook

Magnetic Pick Up Tool

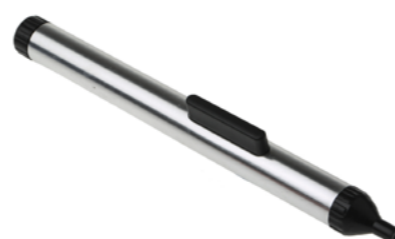
- Pocket sized tool for picking up dropped items in hard to reach places



444-4094 Tool, retrieving, magnetic, telescopic

Vacuum Pick-Up Pen Set

- Handheld vacuum pick-up tool
- Body manufactured from tubular aluminium with a bright anodised finish
- Pick-up Heads consist of a fine steel tube and rubber pick up disc
- Not ESD safe



624-9829 20g Lift Capacity Vacuum Pick Up Tool, 152 mm Aluminium With Aluminium Handle Pick-up head diameters 4mm, 6mm and 10mm

Tweezer Set

- General purpose nickel plated steel tweezers supplied in a handy vinyl wallet



618-8386 Straight fine point tweezers, with serrated jaw, 115mm; Cross-over fine point tweezers (2806) with self-locking jaw, 115mm; Long cross-over point tweezers (2803) w/flat point & self-locking jaws 170mm; Bent fine point tweezers, with dog-lag nose, 145mm; Rounded point tweezers, with blunt tapering jaw 115mm; Stamp tweezers, with blunt spoon nose, 115mm

Economy Tweezers

- Anti-acid/magnetic stainless steel tweezers with serrated handles
- Various lengths and point types available
- For full range visit our website



136-9832 110mm

136-9836 120mm

136-9838 120mm fine point

136-9851 140mm

General Purpose Tweezers

- High-quality stainless steel serrated handles
- Straight and bent point versions incorporate an anti-twist pin
- Overall length 150mm



545-171 Straight

545-187 Bent

Plastic Tweezers

- Excellent tensile and flexural strength, fatigue and creep resistance
- Low friction, good wear and abrasion resistance
- Low moisture absorption
- Excellent chemical resistance (oils, grease, fuels, organic solvents); not resistant to strong acids, alkalis and oxidising



136-9864 115 mm, Delrin Plastic, Tweezers

Extra Fine Point Tweezers

- High quality for precision manipulation
- Manufactured from stainless steel alloy
- Needle-like points have smooth gripping surfaces
- Overall length 140mm



549-628 140 mm, Stainless Steel, Tweezers

Venus Range Precision Tweezers

- Manufactured from high grade anti-acid, anti-magnetic stainless steel



238-6176 Fine VEN No.OC9

238-6182 Extra fine VEN No.4A

238-6198 Short fine VEN No.3C

238-6233 Narrow fine VEN No.SS

238-6249 Strong thick VEN No.00

238-6255 Flat round VEN No.2A

238-6283 Strong standard VEN No.1

Cutting Tweezers

- High-quality tweezers for cropping and trimming fine wires
- Parallel, flush cutting edges ground precisely along their 10mm length
- The head profile comes to a point for access in confined spaces
- Cuts 0.25 mm diameter copper & 0.1 mm diameter steel wires
- Superb brushed finish



540-2029 Carbon steel

RS PRO ESSENTIALS

RS PRO have a wide range of essential products you need to get the job done. Discover the quality range that offers value products from batteries to torches and tapes.

LED Head Torch

- With 6 light settings, in a water and impact resistant case
- Uses 3xAAA batteries (included)



200-6746 350lm

LED Pen Flashlight

- Compact penlight torch uses an extra strong CREE XPG LED to offer a bright light with an easy twist flood-to-spot feature for closer lighting inspection
- IP56 water resistant and up to 1 m impact resistant, making it suitable for harsh environments like worksites



200-6747 180 lm, 150 mm

Aluminium LED Torch

- Long life LED lamp
- Luminosity of 600 lm
- Easy to adjust beam
- 3 beam settings - high, low and strobe
- Not rechargeable
- Four AAA batteries included



196-4196 600 lm, 163 mm

196-4195 250 lm, 150 mm

Rechargeable Aluminium Pocket Torch

- 300-lumen LED pocket torch that will ensure a bright light beam
- Rechargeable Li-polymer battery and micro-USB charging cable included



219-8139 400 lm, 89 mm

LED flashlight

- The anti-roll body ensures that flashlight securely stays in 1 position rather than rolling off the surface.
- Twist flood to spot beam control, that allows users to either create a long-range light is a more focused circular beam of light or create a wide pattern of light.
- A tactical rubberised switch
- The nylon wrist strap prevents the user from accidentally dropping the torch.



176-6034 1400 lumen

2,370-Piece Fasteners Kit

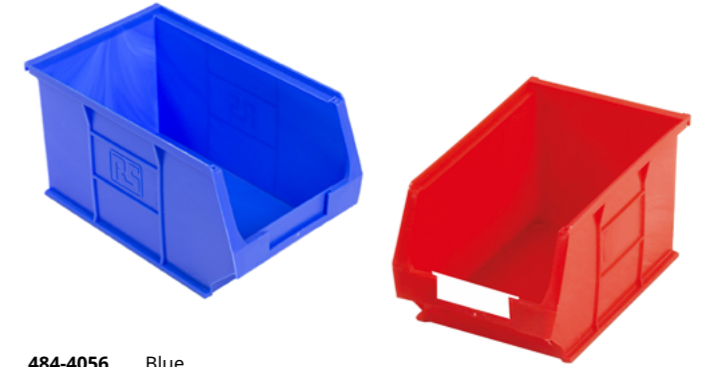
- Contains a variety of 2,370 machine screws, nuts and washers
- Metric thread sizes range from M3 to M5, and length 6mm to 25mm



819-9000

Semi-Open Fronted Storage Bins

- A range of bins in various colours and sizes which are stackable and can be used with louvred panels or cabinets
- Examples shown 150mm wide x 240mm deep x 130mm high, supplied and priced as pack of 5



484-4056 Blue
484-4034 Red
484-4062 Yellow

Sealed Lead Acid Batteries

- A long standby, leakproof design offering excellent recovery from deep discharge
- Other voltages and capacities available on the RS website



686-7253 12V 5Ah

Alkaline Batteries

- Long lasting Alkaline batteries in two common sizes ideal for portable equipment and more
- AA & AAA sizes listed, but C, D, AAAA, and PP3 sizes available



744-2199 AA batteries - 12 pack

744-2209 AAA batteries - 12 pack

Nylon Non-Releaseable Cable Ties

- Supplied as a bag of 100
- Popular sizes shown, many more sizes available on the RS website



233-455 100 x 2.5mm

233-465 150 x 3.6mm

233-487 300 x 4.8mm

Aerosol Air Duster

- Handy aerosol air duster using inert, pure compressed gas
- Ideal for removing particulates from inaccessible areas on delicate equipment



168-1644 400ml can

Polyethylene Barrier Tapes

- One roll has sufficient length to designate a large area
- Made from non-adhesive durable polyethylene which prevents tearing
- Bold white characters on the red background is designed to attract attention and provide a warning message that is clear and visible



763-2049

Safety and Hazard Warning Tapes

- Warning barrier tape
- Very visible tape- effectively warns pedestrian traffic of danger, hazardous and restricted areas
- Made of high density polypropylene
- Tape is non adhesive for re-useable purposes



503-714 Red and white, 50 mm x 100 m

PVC Insulating Tapes

- Available in a range of colours, widths and lengths. Examples shown 19mm width, 33m length



134-7319	Black
134-7324	Blue
134-7323	Red
134-7326	Yellow

Masking Tape

- Rubber resin adhesive material
- Crepe paper backing material



171-9703	25 mm x 50 m
184-6803	12 mm x 50 m

Self Amalgamating Tapes

- Easy unwind
- Extremely flexible Resistant to water, ozone and UV
- Excellent low and high temperature performance
- Excellent conformability to awkward shapes



146-8998	Breaking load is 20.0N/cm, Elongation is 600%
146-8999	
146-9000	

EPDM Self Adhesive Foam Sealing Strip

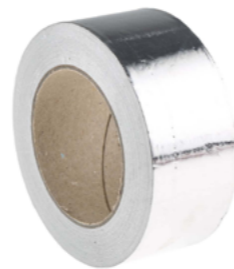
- High strength adhesive backing to ensure long seal life
- Tape system is versatile, convenient, quick and easy to use
- Ideal for bonding, attaching and mounting
- Designed for irregular surfaces
- Dampens down vibration and can be used as a draft excluder



567-963	Black, 12mm x 10m, 3mm Thick
619-1770	Black, 20mm x 10m, 3mm Thick
619-1786	Black, 20mm x 10m, 5mm Thick
619-1758	Black, 15mm x 10m, 3mm Thick
619-1742	Black, 10mm x 10m, 5mm Thick
733-6781	Grey, 12mm x 5m, 2.4mm Thick

Aluminium Tape

- Breaking load is 12N/cm
- Elongation is 5%
- Operating temperature ranges between -20°C and 110°C
- Flame retardant and self-extinguishing
- Good high-temperature resistance
- Easy unwind and tear
- Water-resistant Aggressive adhesive
- Excellent water vapour resistance



146-8961	50mm x 45m
----------	------------

Black PVC Sealing Foam Tape

- A soft pressure sensitive adhesive system that features high initial adhesion
- Tape system is versatile, convenient, quick and easy to use
- Ideal for bonding, attaching and mounting
- Designed for irregular surfaces
- Eliminate drilling, grinding, refinishing, screwing, welding and clean-up



205-0906	
205-0899	
205-0883	Black, 25mm x 15m, 6mm Thick

Quickset Epoxy Adhesive

- Multi use Epoxy for multiple materials; glass, wood, metals and plastics.
- Gel time of mixed epoxy is 4-6 minutes to allow to you leave it to cure.
- Cure time of 24 hours to achieve full properties
- Low shrinkage.
- Flame retardant for improved health and safety.
- Full instructions on each tube for easy use.
- Shelf life of up to 24 months.



850-940	16g
---------	-----

Potting Compounds

- Pourable two-part compounds for potting and encapsulating electronic circuits and components.



851-044	Black, 50 ml
---------	--------------

Mechanical Grade Paste

- A clear acetoxy, silicone rubber compound equivalent to 732 RTV which will bond to most clean surfaces
- Specific applications include sealing wire entries and connectors, adhesive for thermistor mounting, and seals for electrical housings and enclosures



555-588	
---------	--

Trigger Spray Pump Dispenser

- Trigger is adjustable so as to obtain a steady stream or spray
- Bottle is graduated to indicate content level
- Re-usable, refillable dispenser - eco-friendly
- Very simple to use
- Suitable for water based and non-aggressive solvents



779-318	600 ml
---------	--------

Squeeze Bottle

- Spill-proof squeeze bottle
- Made from polyethylene material
- 25 mm stainless steel needle for precise liquid distribution
- Suitable for use with oil and solvent



547-4226	Translucent, 60mL Bottle
----------	--------------------------

Epoxy Mixer Nozzle

- Supports epoxy, acrylic and methacrylate, adhesives & sealants
- Round mixer profile providing smooth even application
- Fits Nordson EFD valve manifolds
- Bayonet fitting
- Easy to use and can be cut to alter bead size
- Easy to clean



503-385	For 50 ml cartridges of epoxy adhesives
---------	---

Non-Corrosive Silicone Sealant

- One-component, room temperature curing silicone elastomer
- Cross linking takes place in the presence of moisture in the air to form a flexible resilient silicone rubber



494-118	
---------	--

Squeeze Bottle

- Squeeze bottle for use with cleaner, oil, solvent and other liquids
- Made from polypropylene (PP)
- Can release single drops or fine streams

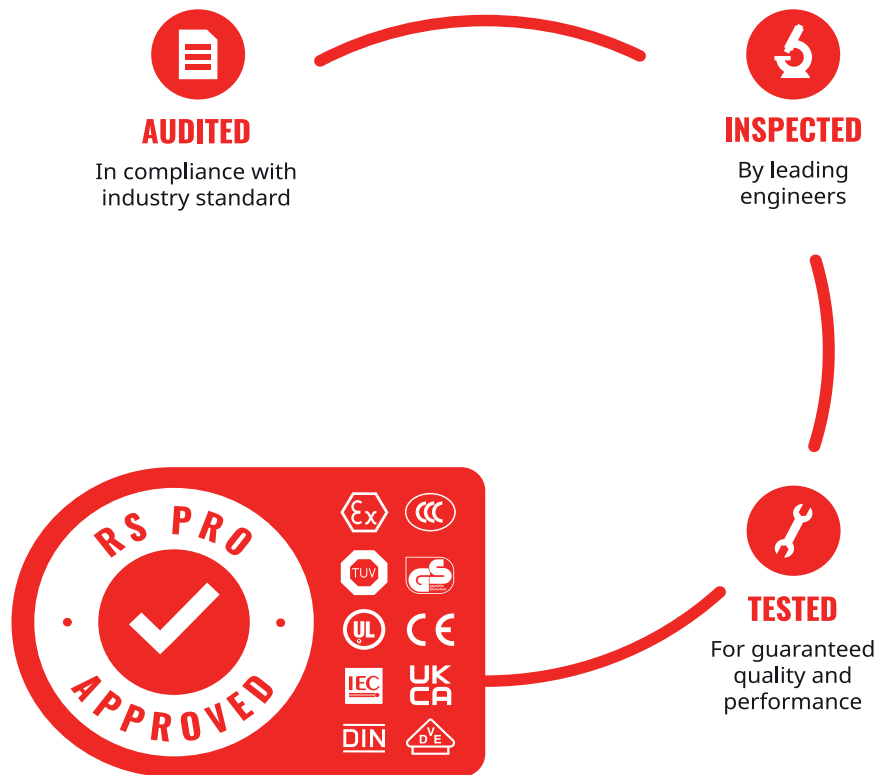


548-4289	Translucent, 225mL Bottle
----------	---------------------------



RS PRO products are audited against demanding international standards, inspected for durability and consistency and tested by leading engineers.

Only when products have been through this process they are awarded our seal of approval, demonstrating quality that can be trusted. Confidence in this process is reflected in our long product warranties - proof that our products will consistently deliver the quality you expect for a long time to come.



CONTACT US

If you'd like to start exploring the RS PRO now, head over to our website rspro.com to browse the vast range.

To make an enquiry contact your RS Account Manager, contact us:

RS Components Pty Ltd (Part of RS Group)
25 Pavesi Street,
Smithfield NSW 2164
Australia

T 1300 656 636

rspro.com