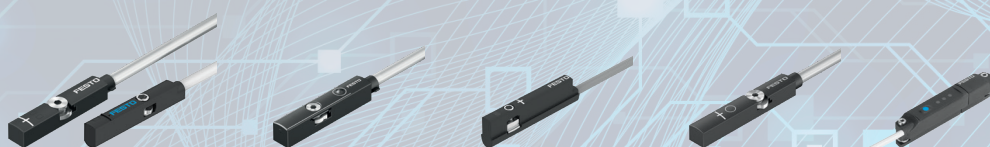


## Selection aid

# Cylinder sensors

**FESTO**

These sensors detect the magnetic field of the piston magnet or a reed contact. They are used for the binary feedback of the piston rod of pneumatic drives. Here is an overview of the available options.



	SMT	SDBT-MSX	SDAC	SDAS	SDAT
	Reliable and sturdy. The standard cylinder sensor from Festo.	Versatile, flexible and time-saving. Additional options for many applications.	Versatile and flexible sensor with 2 switching points. For all compact cylinders with C-slot.	Versatile and flexible sensor with 2 switching points. For all compact cylinders with T-slot.	The sensor for complete control over a long distance. Many setting options.
Solid state	✓	✓	✓	✓	✓
Drop-in	✓	✓	✓	✓	✓
LED feedback	✓	✓	✓	✓	✓
Time-saving		✓			
Space-saving			✓	✓	
Self-learning		✓			
C-slot	✓		✓		
T-slot	✓			✓	✓
IO-Link option			🔗 IO-Link	🔗 IO-Link	🔗 IO-Link
Adjustable switching window		✓			
2 adjustable setpoints			✓	✓	✓
Maximum stroke for 2-in-1 use			30 mm	50 mm	150 mm
Continuous reading position			✓	✓	✓
Connection loose threads	✓	✓	✓	✓	✓
M8 connection	✓	✓	✓	✓	✓
M12 connection	✓				✓
Combination with Core Range products	All cylinders with T-slot		ADN-S 6-10	ADN / ADN-S	All cylinders with T-slot
	Round cylinders		DGSS 6-12	DGSS	
			DGST 6-12	DGST	
			DFM 6-10	DFM	