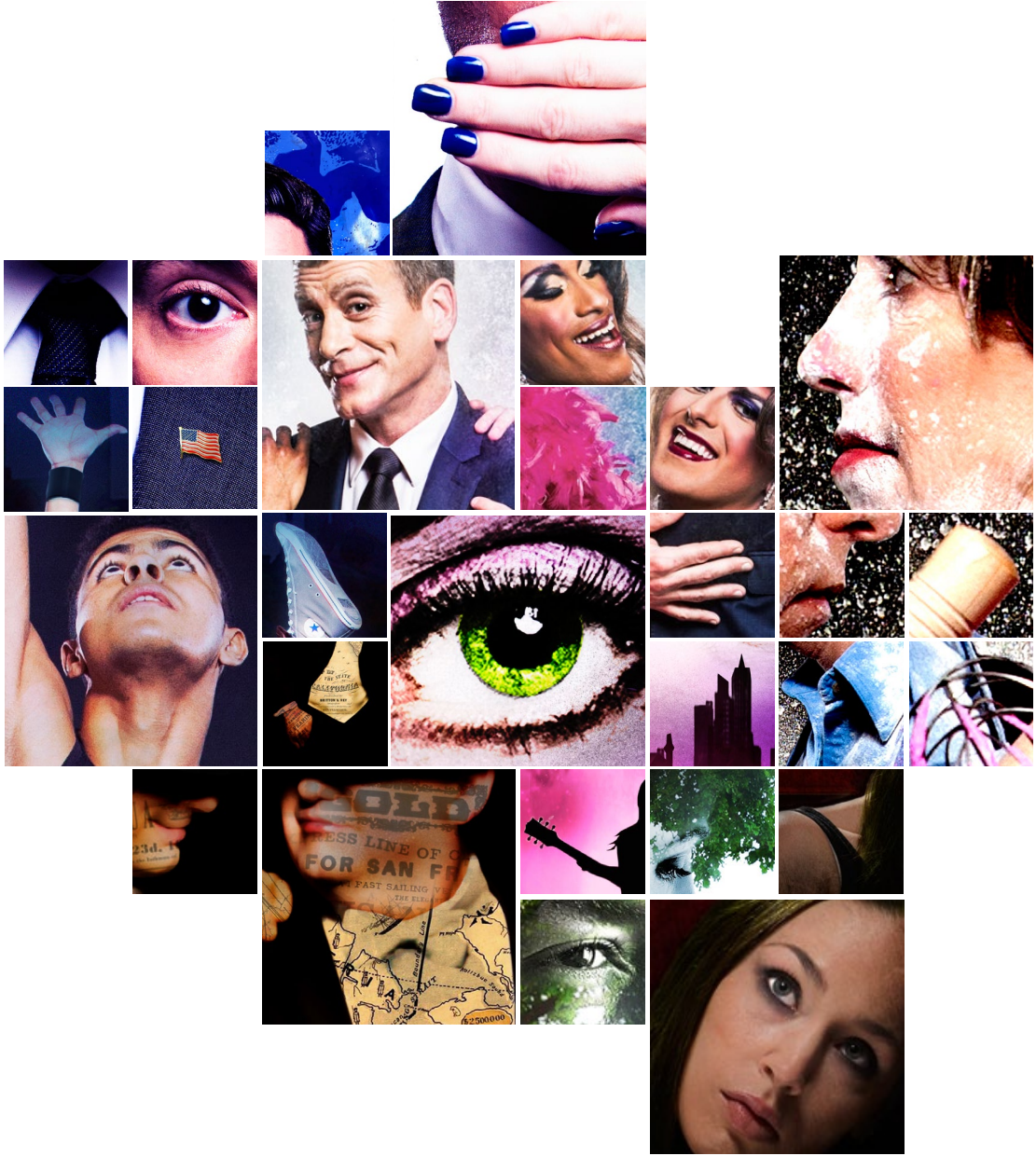


2015/16 signature theatre season



signature



“The most ambitious embrace of musical theater in the region has been at Signature.”

– The Washington Post

Get the VIP Experience at Signature. **Here's How:**

Subscribe

- 1** **Commit to 3 or More Shows and Get Seating Priority**
Subscribers get seated before tickets go on sale to the public. For best seats, order now!
- 2** **Discount on Every Ticket**
The more shows you add to your subscription, the more you save.
- 3** **Fee-Free Ticket Exchanges**
Change of plans? No problem, subscribers can exchange tickets with no change fees!
- 4** **Immunity to Future Price Increases**
Ticket prices change based on demand, buy early for the best price on hot tickets.
- 5** **Guaranteed Seats for Sold Out Shows**
Three productions in Signature's 2014/15 season completely sold out.

Want Even More?



Become a Friend of Signature

Support the Theatre you love and enjoy exclusive opportunities to enhance your experience

- 1** **First-in-Line Seating**
- 2** **Access to Purchase Tickets through Donor Pre-Sales**
- 3** **15% Discount at Ali's Bar and The Signature Shop**
- 4** **Personalized Donor-only Ticket Services Hotline**
- 5** **Behind-the-Scenes Events with Artists**

Questions? Contact the development office at 571 527 1828 or visit www.sigtheatre.org for a complete list of benefits and privileges.

Please consider adding your donation to your 2015/16 subscription order.

Turn to the last page of the brochure for subscription info.

Join us now and play an important role!

The Fix

When a popular presidential candidate dies in his mistress's arms, his ambitious wife, Violet, immediately declares that if she can't be the *wife* of the president, then she'll be the *mother* of the president—and thrusts their lackluster son Cal into the spotlight in Dempsey and Rowe's outrageous musical comedy *The Fix*. With the help of her strategic brother-in-law, Violet transforms her son into the perfect citizen and ideal politician. Together, they create one of the most dysfunctional, yet brutally entertaining, almost-first families.

With a rock-laced, eclectic score and scandalous lyrics, the team behind *The Witches of Eastwick* and *Brother Russia* skewers the American bureaucratic machine. It's *The Manchurian Candidate* meets *Caligula*, with a voice uniquely its own; *The Fix* is a darkly brilliant, over-the-top, audaciously fun ride through the shenanigans of political elections.

BOOK & LYRICS BY **JOHN DEMPSEY**
MUSIC BY **DANA P. ROWE**
DIRECTED BY **ERIC SCHAEFFER**

#SigFix

August 11 – September 20, 2015

August							September						
S	M	T	W	T	F	S	S	M	T	W	T	F	S
		11	12	13	14	15			1	2	3	4	5
16	●	18	19	20	21	22	6	●	8	9	10	11	12
23	●	25	26	27	28	29	13	●	15	16	17	18	19
30	●						20						

“Wicked fun...[A] luridly overblown comedy of lethally bad manners.”

– *The Washington Post*

**THE
FIX**

cake off



WORLD PREMIERE



Cake Off

A hilarious world premiere musical adaptation of Sheri Wilner's riotous battle-of-the-baking-sexes play starring Sherri L. Edelen.

It's the 48th Annual Twillsbury Bake-Off. The legendary jackpot: one million dollars for the best homemade sugary delight. After a chilly pre-heating, hardy contestants Paul and Rita don their aprons, strap on their oven mitts and square off. Armed with whisks, bowls, knives and eggs, the two engage in an increasingly ludicrous all-out brawl—and only one can remain standing when the timer dings.

Ferociously funny, there's nothing sweet about this wild musical satire, presented as part of the Women's Voices Theater Festival.

BASED ON THE ORIGINAL PLAY BY **SHERI WILNER**
BOOK BY **SHERI WILNER & JULIA JORDAN**
LYRICS BY **JULIA JORDAN & ADAM GWON**
MUSIC BY **ADAM GWON**
DIRECTED BY **JOE CALARCO**

#SigCakeOff

The Women's Voices Theater Festival, which boasts participation from more than 50 theaters throughout the Nation's Capital region, is dedicated to featuring new work by female playwrights and highlighting the scope of plays being written by women.

New work at Signature Theatre is sponsored by The Reva & David Logan Foundation.



September 29 – November 22, 2015

September - October

S	M	T	W	T	F	S
		29	30	1	2	3
4	●	6	7	8	9	10
11	●	●	14	15	16	17
18	●	20	21	22	23	24
25	●	27	28	29	30	31

November

S	M	T	W	T	F	S
1	●	3	4	5	6	7
8	●	10	11	12	13	14
15	●	17	18	19	20	21
22						

“**Sheri Wilner has concocted an original and laugh-out-loud satire on gender roles... barbed, witty, thoughtful, giggle and snort inducing.**”

– The New York Times



WORLD PREMIERE



Girlstar

Signature favorite Donna Migliaccio stars in this fantastical world premiere musical fairytale, brimming with magic, darkness and blinding ambition.

Legendary record producer Daniella Espere is searching for her next international sensation. She discovers it in her long-lost niece, Tina, who dreams of being a world-famous pop star. Despite warning signs that all may not be as it seems, the two eagerly forge a mother/daughter bond and Daniella transforms Tina's image, voice and talent into star quality—but not by the usual means.

With an electrifying pop-laden score, *Girlstar* invites audiences of all ages to follow one girl's breathtaking journey and asks, how far is too far to go to become a star?

BOOK & LYRICS BY **ANTON DUDLEY**
MUSIC BY **BRIAN FEINSTEIN**
DIRECTED BY **ERIC SCHAEFFER**

#SigGirlstar

New work at Signature Theatre is sponsored by The Reva & David Logan Foundation.



October 13 – November 15, 2015

October							November						
S	M	T	W	T	F	S	S	M	T	W	T	F	S
		13	14	15	16	17	1	●	3	4	5	6	7
18	●	20	21	22	23	24	8	●	10	11	12	13	14
25	●	●	28	29	30	31	15						

girlstar

“Signature, a venue that specializes in developing new musicals.”

– Variety

West Side Story

Considered one of the greatest musicals of all time, *West Side Story* makes its triumphant Signature debut.

In the late 1950s two rival gangs struggle for control of their West Side New York City neighborhood. Amidst the chaos, star-crossed lovers find themselves wrenched between their worlds. Beautiful, passionate, with shades of violence and heartache, this innovative adaptation of Shakespeare's *Romeo and Juliet* still dazzles after more than fifty years.

Written by the dream creative team of Leonard Bernstein, Arthur Laurents and Stephen Sondheim, *West Side Story*'s legendary jazz, Latin and classical-inspired score features the treasured songs "Something's Coming," "Tonight," "I Feel Pretty" and "America."

BOOK BY **ARTHUR LAURENTS**

MUSIC BY **LEONARD BERNSTEIN**

LYRICS BY **STEPHEN SONDHEIM**

BASED ON A CONCEPTION OF **JEROME ROBBINS**

BASED ON SHAKESPEARE'S *ROMEO AND JULIET*

DIRECTED BY **MATTHEW GARDINER**

#SigWestSide

WEST SIDE STORY

December 8, 2015 – January 24, 2016

December							January						
S	M	T	W	T	F	S	S	M	T	W	T	F	S
		8	9	10	11	12						1	2
13			16	17	18	19	3		5	6	7	8	9
20	21	22	23			26	10		12	13	14	15	16
27		29	30	31			17		19	20	21	22	23
							24						

“It snaps, it crackles, it pops!

It surges with a roar, its energy and sheer life undiminished by the years...when the “Prologue” blasts out of the pit, it sends an immediate thrill down the audience’s collective spine. ”

– *New York Post*

road show

SONDHEIM. SIGNATURE'S SIGNATURE.



Road Show

The third collaboration between Weidman and Sondheim (*Assassins*, *Pacific Overtures*), *Road Show* is a freewheeling musical travelogue of the optimism and opportunism of the early twentieth century through the eyes of two ambitious, eccentric, yet playfully charming brothers.

Based on the real-life Mizner siblings, *Road Show* follows the dreamer and the schemer's quest for the ever elusive, shape-shifting American dream. From the Klondike gold rush to India, Hawaii, Guatemala, New York and finally the real-estate boon of Florida's Boca Raton, the dazzling pace scours not only the map, but also forty years of boom-and-bust and brotherly love (or hate).

For Signature's 26th Sondheim production, we welcome back director Gary Griffin (*A Funny Thing...Forum*) with his acclaimed Chicago Shakespeare Theater staging of *Road Show*.

MUSIC & LYRICS BY **STEPHEN SONDHEIM**
BOOK BY **JOHN WEIDMAN**
DIRECTED BY **GARY GRIFFIN**

#SigRoadShow



February 9 – March 13, 2016

February							March						
S	M	T	W	T	F	S	S	M	T	W	T	F	S
		9	10	11	12	13			1	2	3	4	5
14	●	16	17	18	19	20	6	●	8	9	10	11	12
21	●	23	24	25	26	27	13						
28	●												

“Fierce, funny, lean and heartbreaking.”

– Chicago Sun-Times

The Flick

The Flick

Set in the popcorn-strewn, empty aisles of a crumbling Massachusetts movie theater, this 2014 Pulitzer Prize winner exposes the surprising tenderness and comedy in the everyday.

Spilled soda on the floor. Leftover food wrappers stashed in the seats. Three minimum wage employees perform the humdrum labor necessary to keep one of the last 35 millimeter projectors running. Through seemingly small conversations about movie actors, broom techniques and weekend plans, the characters divulge heartbreak, hopes and a compelling story all their own.

With her finely-tuned comic eye, Annie Baker (*Circle Mirror Transformation*, *The Aliens*) brings a rich humanity to three people who desperately strive to connect, help each other move on and accept their place in the world.

BY ANNIE BAKER
DIRECTED BY JOE CALARCO

#SigFlick

March 1 – April 17, 2016

March							April						
S	M	T	W	T	F	S	S	M	T	W	T	F	S
		1	2	3	4	5						1	2
6	●	●	9	10	11	12	3	●	5	6	7	8	9
13	●	15	16	17	18	19	10	●	12	13	14	15	16
20	●	22	23	24	25	26	17						
27	●	29	30	31									

“Funny, heartbreaking, sly, and unblinking. *The Flick* may be the best argument anyone has yet made for the continued necessity, and profound uniqueness, of theater.”

– *New York Magazine*

The Mystery of Love & Sex

From one of the writers of HBO's *Boardwalk Empire* and Showtime's *Masters of Sex* comes an unexpected story of evolving friendship, finding your own path and the value of family.

Complete opposites, Charlotte and Jonny have been best friends since they were children. Now, as college students on the eve of graduation, they toy around with taking their friendship romantic. Or not. Why decide? After all, neither is sure they are even attracted to the other. Meanwhile, Charlotte's parents, an unlikely couple themselves, push the kids for a definition even while their own relationship founders. Gradually, secrets and truths emerge as playing grown-up turns into actually growing up.

Funny, insightful, with an intense and complex core, Bathsbeba Doran's (*Nest*) newest play brilliantly examines intimacy, identity and, of course, the many mysteries of love and sex.

BY BATHSHEBA DORAN

#SigMystery

The *Mystery of Love & Sex* contains full male and female nudity.

April 5 – May 8, 2016

April							May						
S	M	T	W	T	F	S	S	M	T	W	T	F	S
		5	6	7	8	9	1	●	3	4	5	6	7
10	●	12	13	14	15	16	8						
17	●	●	20	21	22	23							
24	●	26	27	28	29	30							

“Perfectly wonderful...
packed with humanity.”

– The New York Times

the
mystery
of love & sex



La Cage aux Folles

The beloved gender-bending musical comedy and winner of six Tony Awards® including Best Musical closes out the Signature season with Bobby Smith.

The twenty year relationship between Georges, a club-owner, and Albin, the head drag performer, faces a test when their son announces his engagement to the daughter of ultra-conservative political parents. To please their son, Georges and Albin agree to hide their lifestyle and play it straight for a dinner with the potential in-laws. However, Albin's different definition of "normal" threatens to upend the entire supper with hilarious results.

With an iconic score by Jerry Herman (*Hello, Dolly*; *Mame*) featuring "I Am What I Am" and "The Best of Times" and hilarious book by Harvey Fierstein (*Newsies*, *Kinky Boots*), *La Cage aux Folles* is a fabulously fun musical about family, identity and loving who you are.

MUSIC & LYRICS BY **JERRY HERMAN**
 BOOK BY **HARVEY FIERSTEIN**
 BASED ON THE PLAY *LA CAGE AUX FOLLES* BY **JEAN POIRET**
 DIRECTED BY **MATTHEW GARDINER**

#SigLaCage

May 31 – July 10, 2016

May - June							July						
S	M	T	W	T	F	S	S	M	T	W	T	F	S
		31	1	2	3	4						1	2
5	●	7	8	9	10	11	3	●	5	6	7	8	9
12	●	14	15	16	17	18	10						
19	●	21	22	23	24	25							
26	●	28	29	30									

“It’s funny, heartwarming and terrific.”

– Variety

Special Events

Cabaret Series

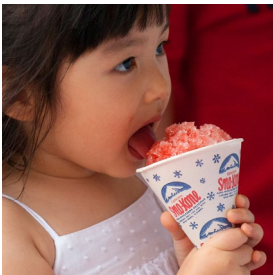


Sizzlin' Summer Nights Series

July 8 – 25, 2015

Signature opens our air-conditioned doors once more for the annual *Sizzlin' Summer Nights* Series. With a different concert each night, there's always something to keep you entertained. Past acts have included Sirius XM's Christine Pedi, Euan Morton, Erin Driscoll and Nova Y. Payton.

Tickets: \$25 per show; All-Access Pass only \$150



Signature's Open House

August 2, 2015 | Noon – 8:30PM

FREE

Kick off the 26th Season with Signature's Annual Open House. Starting at noon, come enjoy performances every fifteen minutes, special ticket offers and a grand finale concert.

Made from Scratch: Building a New Musical

September 9 – 27, 2015

\$260, \$221 for Friends of Signature

A five part seminar about the making of the world premiere musical *Cake Off*. Get up close and personal with director Joe Calarco, the writers, music director and actors, and see the musical behind-the-scenes as it goes from page to stage.



Tickets: \$32 for all subscribers, \$35 for general public. Or buy all four for \$124.



Tracy Lynn Olivera

October 27 – 31, 2015

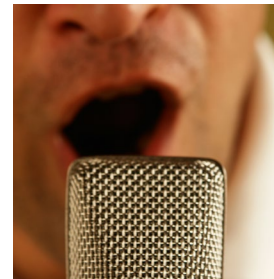
The captivating chanteuse Tracy Lynn Olivera returns to Signature following her sold out 2014 cabaret with a Halloween spooktacular. Featuring classics such as "Thriller" and "Science Fiction Double Feature" along with Tracy's signature style and wit, it's sure to be a howling good time!



Nova Y. Payton

December 15 – 19, 2015

Octave-shattering Nova Y. Payton, star of *Dreamgirls* and *Hairspray*, delivers a delightful evening full of cherished holiday tunes. Some of her favorites include "This Christmas," "Jingle Bell Rock," "Santa Baby" and "I saw Mommy Kissing Santa Claus." With Nova at the mic, this cabaret is the perfect holiday treat.



The Rat Pack

April 19 – 23, 2016

They were the coolest cats of all time. In the vein of the legendary crooners Frank Sinatra, Sammy Davis, Jr. and Dean Martin, three suave Signature gentlemen take the stage for a sophisticated evening of ballads, booze and banter. Featuring classic songs from the '50s and '60s such as "King of the Road," "That's Amore" and "I've Gotta Be Me."



Make 'Em Laugh

June 14 – 18, 2016

In a hilarious mix of improv and song, Signature's funniest ladies and gents come together for a whirlwind expedition through the art of the joke. From humorous rewritings of classic songs, to comedy ditties, to some of contemporary musical theater's whimsical gems, Signature has one goal for this cabaret—to make you laugh!

Thank you to our season partners:

Dottie Bennett and Richard Morton
Cathy Bernard/Bernard Family Foundation
Mike Blank
The Morris and Gwendolyn Cafritz Foundation
Bonnie and Kenneth Feld

Frank Guzzetta and Paul Manville HRH Foundation
Rick Kasten
Arlene and Robert Kogod MARPAT Foundation
Laura Ariane (Laurie) Miller and Lois C. Greisman

Wesley Pickard and Jeanette Studley
Share Fund
Peter and Ann Tanous
The Ted & Mary Jo Shen Charitable Gift Fund
The Shubert Foundation
J. Watkins and Bradley Frey

All photos by Christopher Mueller unless otherwise noted. Page 4: Amos Wolff; Page 6: Chad Fornwalt and Sherri L. Edelen; Page 8: Donna Migliaccio; Page 10: Gustavo Ribeiro; Page 12: Lou Steele and Russell Sunday; Page 14: Laura C. Harris; Page 18: Isaiah Young, Bobby Smith and Jay Garrick; Page 21: All open house photos, including James Gardiner and Felicia Curry by Teresa Wood.

Subscribe in 5 Easy Steps

1 Pick Your Date and Time

Whether you desire a regular Saturday date night; a traffic-free Sunday afternoon brunch and theater day; or saving money on a Tuesday night, we have a day and time combination that is a perfect fit for your schedule.

Signature Performance Schedule:

Tuesday at 7:30PM	Wednesday at 7:30PM	Thursday at 8PM	Friday at 8PM	Saturday at 2PM & 8PM	Sunday at 2PM & 7PM
-------------------	---------------------	-----------------	---------------	-----------------------	---------------------

(Please note, there is no Saturday 2PM performance in the First Week)

For a more immersive experience, choose one of our Specialty Nights:

Pride Night

A special Friday event for members of the LGBTQ community, family and friends with a lively post-show reception.



Discussion Night

Go behind-the-scenes with an exclusive post-show discussion following select Tuesday and Wednesday performances.

First Week

Get in early and witness a show that is sometimes still in the making – our most economical subscription package.

2 Choose Your Tier

Tier 1 The best sightlines in the house, center and close-in sections in the orchestra and dress circle.

Tier 2 Cost savings over Tier 1, side views or further back, no more than 25 feet from the stage.

3 Select Your Shows

You can subscribe with as few as 3 mainstage shows, or choose any number up to all 8 to become a full-season subscriber! Then add on cabarets and special events at the subscriber discount.

4 Consider Joining Friends of Signature

Donate to support the Theatre you love, get seating priority and much, much more. See page 3 for a list of exclusive benefits.

5 Place your order!

A downloadable order form may be found online at www.sigtheatre.org.

EMAIL tickets@sigtheatre.org

CALL 703 820 9771

FAX 703 820 7790

MAIL OR IN PERSON Signature Theatre, 4200 Campbell Ave., Arlington, VA 22206

BOX OFFICE HOURS

Monday thru Friday, 10AM – 6PM; Saturday & Sunday, Noon – 6PM

Pricing

Tier 1 Subscription Pricing

Package Pricing	8 Shows	7 Shows	6 Shows	5 Shows	4 Shows	3 Shows
First Week: Weekend or Weekday	\$490.00	\$430.00	\$382.00	\$320.00	\$266.00	\$202.00
Tuesday, Wednesday, Thursday, or Sunday Evenings	\$570.00	\$500.00	\$442.00	\$370.00	\$306.00	\$232.00
Friday Evening	\$650.00	\$570.00	\$502.00	\$420.00	\$346.00	\$262.00
Saturday or Sunday Matinees, Discussion Night	\$610.00	\$535.00	\$472.00	\$395.00	\$326.00	\$247.00
Saturday Evenings, Pride Night	\$682.00	\$598.00	\$526.00	\$440.00	\$362.00	\$274.00

Tier 2 Subscription Pricing

Package Pricing	8 Shows	7 Shows	6 Shows	5 Shows	4 Shows	3 Shows
First Week: Weekend or Weekday	\$450.00	\$395.00	\$352.00	\$295.00	\$246.00	\$187.00
Tuesday, Wednesday, Thursday, or Sunday Evenings	\$530.00	\$465.00	\$412.00	\$345.00	\$286.00	\$217.00
Friday Evening	\$610.00	\$535.00	\$472.00	\$395.00	\$326.00	\$247.00
Saturday or Sunday Matinees, Discussion Night	\$570.00	\$500.00	\$442.00	\$370.00	\$306.00	\$232.00
Saturday Evenings, Pride Night	\$642.00	\$563.00	\$496.00	\$415.00	\$342.00	\$259.00

Single tickets go on sale early July.



2015/16 Signature Theatre Season Inside!



Thank you to our season partners:



NORTHROP GRUMMAN



MARK CENTER | 1 BELLVIEW | SOUTH COAST | FERRY PARKWAY | 1500 WOODWARD



SUSAN GAGE
CATERERS



arlington arts



THE
RVA & DAVID LOGAN
FOUNDATION

signature

Signature Theatre
4200 Campbell Ave.
Arlington, VA 22206

Eric Schaefer Artistic Director
Maggie Boland Managing Director

www.sigtheatre.org | 703 820 9771

Customer ID

Source Code