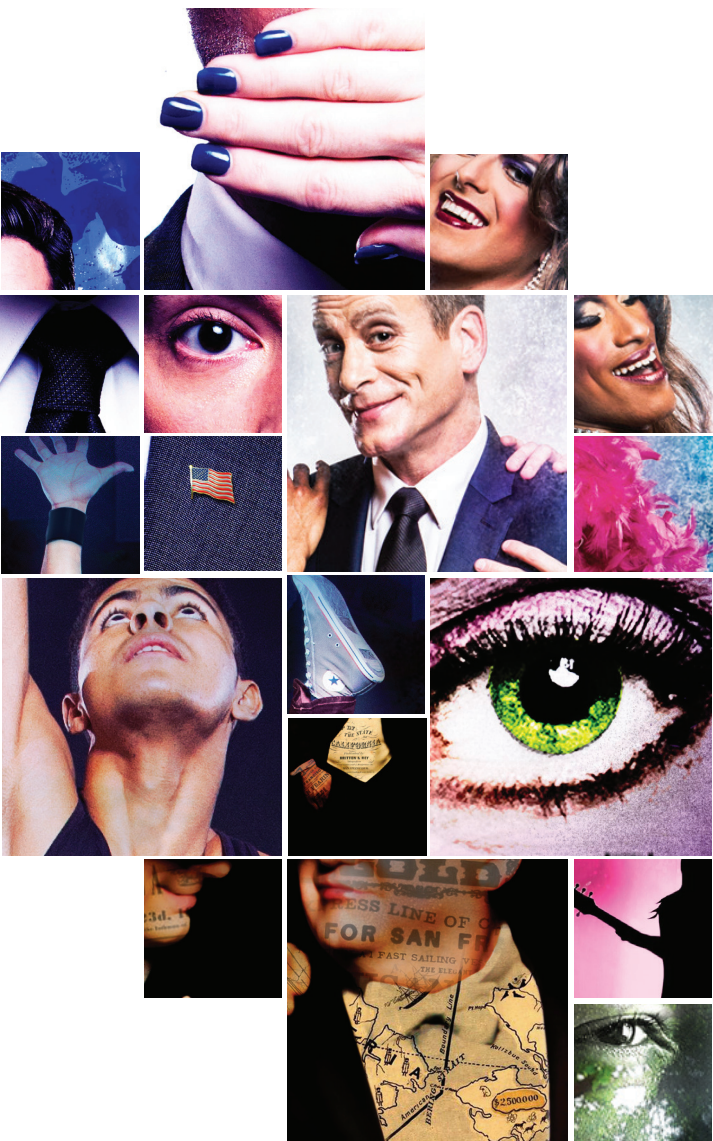


2015/16 signature theatre season **group sales**



signature

why signature?

Group discounts start at 20%

There are additional discounts during preview week and for groups of students, seniors, members of the military and larger groups over 50 people.

Get the Signature Experience

In addition to reserving tickets for the performance, our friendly staff can assist you in planning a pre-show cocktail hour or a post-show gathering in our lobby. Groups pay no additional facility rental fee for events associated with their group ticket purchase.

Start planning your group's Signature experience today.

Group Sales: 571 527 1843
groups@sigtheatre.org

the 26th season



The Fix

AUGUST 11 – SEPTEMBER 20, 2015

Book & Lyrics by John Dempsey
Music by Dana P. Rowe
Directed by Eric Schaeffer



When a popular presidential candidate dies in his mistress's arms, his ambitious wife, Violet, thrusts their lackluster son Cal into the spotlight. With a rock-laced, eclectic score and scandalous lyrics, *The Fix* is a darkly

brilliant, over-the-top, audaciously fun ride through the shenanigans of political elections.



cake off

Cake Off

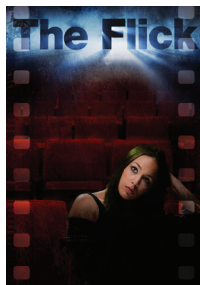
SEPTEMBER 29 – NOVEMBER 22, 2015

Based on the original play by Sheri Wilner
Book by Sheri Wilner & Julia Jordan
Lyrics by Julia Jordan & Adam Gwon
Music by Adam Gwon
Directed by Joe Calarco



In this hilarious world premiere musical comedy, it's the 48th Annual Twillsbury Bake-Off. The legendary jackpot: one million dollars for the best homemade sugary delight. After a chilly pre-heating,

hardy contestants Paul and Rita don their aprons, strap on their oven mitts and square off, but only one can remain standing when the timer dings.



The Flick

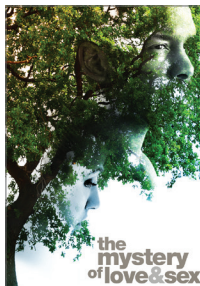
MARCH 1 – APRIL 17, 2016

By Annie Baker
Directed by Joe Calarco



Set in the popcorn-strewn, empty aisles of a movie theater, this 2014 Pulitzer Prize-winning comedy exposes the surprising tenderness in the everyday. Three minimum wage employees perform the humdrum labor necessary to keep one of the last 35 millimeter

projectors running. Through seemingly small conversations about movie actors, broom techniques and weekend plans, the characters divulge heartbreak, hopes and a compelling story all their own.



The Mystery of Love & Sex

APRIL 5 – MAY 8, 2016

By Bathsheba Doran



From the writer of HBO's *Boardwalk Empire* and Showtime's *Masters of Sex* comes an unexpected love story of evolving friendship, finding your own path and the value of family. Complete opposites, Charlotte and Jonny have

been best friends since they were children. Now, they toy around with taking their friendship romantic. Gradually, secrets and truths emerge as playing grown-up turns into actually growing up.

The Mystery of Love & Sex contains full male and female nudity.



La Cage aux Folles

MAY 31 – JULY 10, 2016

Music & Lyrics by Jerry Herman
Book by Harvey Fierstein
Based on the play *La Cage aux Folles* by Jean Poiret
Directed by Matthew Gardiner



The twenty year relationship between Georges, a club-owner, and Albin, the head drag performer, faces a test when their son announces his engagement to the daughter of ultra-conservative political parents. With an iconic score featuring "I Am What I Am" and "The Best of Times" *La Cage aux Folles* is a fabulously fun musical comedy about family, identity and loving who you are.



Musical



Play



Girlstar

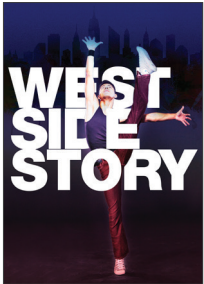
OCTOBER 13 – NOVEMBER 15, 2015

Book & Lyrics by Anton Dudley
Music by Brian Feinstein
Directed by Eric Schaeffer



Legendary record producer Daniella Espere is searching for her next international sensation. She discovers it in her long-lost niece, Tina. Despite warning signs that all may not be as it seems, Daniella transforms Tina's

image, voice and talent into star quality. With an electrifying pop-laden score, *Girlstar* follows one girl's breathtaking journey in this world premiere gothic musical fairytale.



West Side Story

DECEMBER 8, 2015 – JANUARY 24, 2016

Book by Arthur Laurents
Music by Leonard Bernstein
Lyrics by Stephen Sondheim
Based on a conception of Jerome Robbins
Based on Shakespeare's *Romeo and Juliet*
Directed by Matthew Gardiner



Beautiful, passionate, with shades of violence and heartache, this innovative adaptation of Shakespeare's *Romeo and Juliet* still dazzles after

more than fifty years. Considered one of the greatest musicals of all time, *West Side Story*'s legendary jazz, Latin and classical-inspired score features the treasured songs "Something's Coming," "Tonight," "I Feel Pretty" and "America."



road show

Road Show

FEBRUARY 9 – MARCH 13, 2016

Music & Lyrics by Stephen Sondheim
Book by John Weidman
Directed by Gary Griffin



A freewheeling musical travelogue of the optimism and opportunism of the early twentieth century. Based on the real-life Mizner siblings, *Road Show* follows the dreamer and the schemer's quest for the ever elusive,

shape-shifting American dream. From the Klondike gold rush to India, Hawaii, Guatemala, New York and finally the real-estate boon of Florida's Boca Raton, the dazzling pace scours not only the map, but also forty years of boom-and-bust and brotherly love (or hate).

about signature theatre

The Tony Award®-winning Signature Theatre is DC's "positively swanky" (*The New York Times*) home for contemporary musicals and new plays. Signature produces Broadway caliber performances in an intimate space where audiences are never more than 45 feet from the action. Musical theater is Signature's "signature" with 2014's *Gypsy* called "DC's finest musical revival in years" by *The Washington Post*. Minutes from downtown tourist attractions and hotels, just off I-395, Signature's home in the Shirlington Village area of Arlington is home to numerous local restaurants and quaint shops, making it a perfect destination for a night on the town.

HOW TO GET HERE

4200 Campbell Ave., Arlington, VA 22206
10 minutes from downtown Washington, DC
in Shirlington Village immediately off I-395.

For directions, visit www.sigtheatre.org/getting-here



Call 571 527 1843 or email
groups@sigtheatre.org

TONY AWARD®-WINNING THEATER
INTIMATE ATMOSPHERE
GROUPS SAVE AT LEAST 20%

Photos of Sherri L. Edelen, Chad Fornwalt, Jay Garrick, Laura C. Harris, Donna Migliaccio, Gustavo Ribeiro, Bobby Smith, Lou Steele, Russell Sunday, Amos Wolff and Isaiah Young by Christopher Mueller.



Musical



Play