

Experience the Legacy

Swedish Heritage

in Northern Illinois, U.S.A.

Visitor's
Guide

gorockford.com



Experience Swedish History in Northern Illinois

Experience the Legacy

American cities do not get much more Swedish than Rockford, Chicago and Bishop Hill, to which Swedish immigrants began flocking to in the mid 1840s. Consequently, Northern Illinois has spent the last two centuries cultivating its Swedish heritage, and as a result, there's a lot to see and do!

When modern-day Swedes visit, they can take pride in knowing their ancestors helped forge some of the most interesting places to visit in the Midwestern United States. The following pages provide a brief history of Swedish hot spots, as well as recommendations to help make planning your tour of Swedish America a little bit easier.

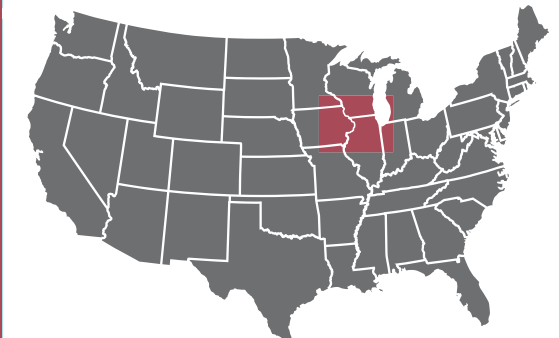
If you need further assistance or information on this most accessible, fun and remarkably Swedish region, please visit gorockford.com, call 815-963-8111, or come downtown to the Rockford Visitor Center at the corner of State and Main Street just west of the Rock River. You are more than welcome to lean on the expert staff of the Rockford Area Convention & Visitors Bureau. We are here to help make your visit a truly Swedish experience. **Ha så roligt!**

**Welcome / Välkomna / Velkommen /
Tervetuloa / Velkominn**

Design:
GrahamSpencer /
grahamspencer.com



MAP OVERVIEW



WISCONSIN

Lake Michigan

● Madison

● Milwaukee

IOWA

● Galena

Davenport ●

ROCKFORD
PG. 2

120 km

141 km

30 km

CHICAGO
PG. 8

O'Hare

BISHOP HILL
PG. 12

● Bloomington

ILLINOIS

238 km

264 km

Visit gorockford.com
or call 815.963.8111 for more details!



Kids at play, Swedish American Museum ↑
Chicago, IL

Introduction	2
Rockford	4
Chicago	8
Bishop Hill	12
Main Attraction Photos	16
Transportation Info	20
Map	21

2010© RACVB

To the best of our knowledge, all information in this guide was accurate when it was printed in March 2010 . To avoid disappointment, we encourage you to phone for information prior to planning a trip around a specific attraction or event. The Rockford Area Convention & Visitors Bureau is not responsible for changes in rates, amenities, policies or hours.

Visit gorockford.com or call 815.963.8111 for more details!



Introduction

From the middle of the nineteenth century onwards, Swedes came to Illinois by the tens of thousands to seek their fortunes. They were part of a worldwide mass-migration that eventually brought 60 million people to the US. They came to escape poverty, to enjoy freedom of expression, to participate in the political process, to worship (or not) as they pleased, and sometimes simply to find adventure. With the exception of Ireland and Norway, Sweden sent more citizens to the US than any other country in Western Europe. In fact, in 1900, Chicago was the city with the second highest number of Swedes, second only to Stockholm.

IN ROCKFORD

The first Swedish immigrants moved to Rockford in 1852. Within a few short years there were hundreds of Swedes living on or near Kishwaukee Street.

After the Civil War, the railroads began attracting Swedish immigrant labor. But the real boost for Rockford and the Swedish population came in 1876, when the Rockford Union Furniture Company was organized by a small group of men led by John Erlander, an immigrant from Småland, Sweden. Their success attracted more and more Swedish craftsmen and their families. In just a short time, these hardworking, innovative entrepreneurs built Rockford into the second largest furniture manufacturing center in the United States.

Swedes in larger US cities had a difficult time achieving positions of political and economic leadership. However, there was something perfect about Rockford – maybe its size or location – that allowed Swedish-Americans to play a larger role in government. In fact, between 1920 and 1950, Swedish-Americans controlled the entire city government of Rockford.

Today, the Swedish community continues to be a strong and positive influence in Rockford.

IN CHICAGO

Andersonville's Swedish explosion began in the mid 1800s when immigrant Swedish farmers started moving north into what was then a distant suburb of Chicago. The area received a huge Swedish infusion when wooden homes were outlawed in Chicago after the Great Fire of 1871. Swedish immigrants, who could not afford

to build homes of stone or brick, began to move outside of the city's northern limits.

Before long, the entire commercial strip of Andersonville was dominated by Swedish businesses. The local churches, such as Ebenezer Lutheran Church, Bethany Methodist Episcopal Church, and St. Gregory's Roman Catholic Church, were also built by Swedes, and reflected the religious diversity of the new arrivals.

Today, in addition to being one of the most concentrated areas of Swedish culture in the United States, Andersonville is home to a diverse assortment of devoted residents and businesses.

Andersonville is now considered one of Chicago's "cool" neighborhoods. It also enjoys nationwide renown for its unique business district, comprised almost entirely of locally owned, independent businesses.

IN BISHOP HILL

The village of Bishop Hill was founded in 1846 by Swedish immigrants affiliated with the Pietist movement, led by Erik Jansson. Jansson sent his devout follower, Olof Olsson, to the United States to find a location where Janssonists could start a Utopian society – and Bishop Hill was the place. According to Jansson, this

community would become the "New Jerusalem" and their beliefs would soon spread across the world. As a result, 1400 colonists emigrated from Sweden to their new home in western Illinois. The colony grew and flourished for fifteen years before disbanding in 1861.

Today, Bishop Hill is interpreted as a living community of Swedish-American heritage where descendants of those original colonists still live and strive to make this community a utopia restored. Bishop Hill is a National Landmark Village, listed in the National Register of Historic Places and it is an Illinois State Historic Site.





Rockford

For over 150 years, Swedes have helped shape the history, culture, and future of Rockford – and as a result, the City couldn't be any more blue and yellow. From our Swedish museums, including the Erlander Home Museum, to the incredible Anderson Japanese gardens, designed and established after native-Swede John Anderson's visit to Japan, to Rockford's legendary Swedish festival, there is always something superbly Swedish to do.

4

A SWEDISH DAY IN ROCKFORD

Start your day, the Swedish way, at **Stockholm Inn**—a Rockford favorite for locals and visitors wanting to satisfy their craving for Swedish pancakes and imported lingonberries. As Rockford's largest restaurant, Stockholm Inn serves more than 10,000 meals a week with their signature Swedish charm and flavor.

Next, tour the **Erlander Home Museum**. Built in 1871, the home is the cultural centerpiece of Rockford's Swedish community. The collections feature locally crafted furniture, dolls by Charlotte Weibull, and historical artifacts. Finish your morning at the **Swedish American Hospital Heritage Center** dedicated on June 6, 2011, in celebration of the 100th anniversary of the hospital's founding.

Have lunch at the **HearthRock Cafe**, known for its smoked BBQ Pulled Pork sandwich...and the fact that it's located in an historic Swedish furniture factory building, built in 1887. And to continue the taste of the 1800s, be sure to visit **Midway Village Museum**. This late 19th century village is home to 26 historical buildings as well as permanent exhibits featuring immigration, aviation, industry, and the renowned Rockford Peaches women's baseball team. Midway has an entire room dedicated to the American Union of Swedish Singers!

While Rockford boasts many delightful restaurants, if you are traveling with a group, you can pre-arrange a more intimate dining experience—**Rockford's Swedish Historical Society** members open their homes to host Swedish visitors for an authentic American meal. These dine-around style events are often a highlight for Swedish groups visiting Rockford.

On a sunny Saturday in June, the Rockford Swedish Historical Society hosts the **Midsommar Festival**, an annual community-wide celebration of Swedish heritage, traditions, arts, language and activities. The festival features Stockholm Inn's world-famous Swedish pancakes, Swedish bakery, artist exhibit, Swedish Marknad (market), children's activities, a traditional majstang (Maypole) and live entertainment.

Several other themed tours of the Rockford region are available, escorted for groups or self-guided for individuals. Visit www.gorockford.com for detailed multi-day itineraries that can guide your exploration.

Visit gorockford.com
or call 815.963.8111 for more details!



5

Carl Milles Angels at Anderson Japanese Gardens ↑

SWEDISH ATTRACTIONS

Anderson Japanese Gardens / 318 Spring Creek Rd., Rockford, IL 61107 / 815.229.9390 / www.andersongardens.org / Take time to explore the 12 acres of this 12th-Century-style “pond-strolling” garden, ranked the top Japanese garden in North America, and stop in the Visitors Center to shop in the gift shop or dine in the restaurant.

Erlander Home Museum / 404 S. 3rd St., Rockford, IL 61104 / 815.963.5559 / www.swedishhistorical.org / The cultural centerpiece of Rockford’s Swedish-ancestry community, the Erlander home was built in 1871 and has been restored to its original Victorian decor. The twelve-room home features collections that include Rockford-made furniture, a renowned collection of dolls created by Charlotte Weibull and many artifacts recalling Rockford’s Swedish heritage.

Midway Village Museum / 6799 Guilford Rd., Rockford, IL 61107 / 815.397.9112 / www.midwayvillage.com / History comes to life at this late 19th century village with 26 historical buildings set on 137 acres. Indoor galleries with permanent exhibits on area heritage include the Rockford Peaches baseball team and exhibits describing the city’s history, aviation and industry.

Stockholm Inn / 2420 Charles St., Rockford, IL 61108 / 815.397.3534 / www.stockholminn.com / Popular restaurant that cooks up Swedish pancakes with imported lingonberries, Swedish meatballs and other Swedish favorites.

SwedishAmerican Heritage Center / 1313 E. State St., Rockford, IL 61104 / 815.961.2496 / Exciting and unusual Heritage Center opening June 6, 2011, as a part of the celebration of the 100th anniversary of the existence of the SwedishAmerican Health System. Many unusual and unique medical objects will be displayed depicting the past, present and future of medicine. Interactive exhibits to engage attendees of all ages will be available. It is free and open to the public.

Swedish Historical Society of Rockford / 404 S. 3rd St., Rockford, IL 61104 / Founded in 1938 to celebrate the 300th anniversary of the arrival of Swedes in North America, the Society’s Swedish roots run deep. The organization’s

focus is the preservation of Swedish-American history and culture of Rockford through such activities as the conservation of artifacts, museum displays and educational programs.

OTHER NOTABLE ATTRACTIONS

Coronado Performing Arts Center / 314 N. Main St., Rockford, IL 61101 / 815.968.0595 / www.coronadopac.org / An ornate movie palace and vaudeville hall built in 1927 and restored and renovated in 2000. This “atmospheric-style” theater is worth seeing just for its opulent interior but is also host to many renowned performing arts groups and traveling shows.

Finials / 4626 E. State St., Rockford, IL 61108 / 815.398.4428 / www.ifnials.com / A unique Scandinavian imports gift store located in a 13-room “little red stuga.” Shop for beautiful handcrafted wooden pieces, smör (butter) knives, fine hand-blown Orrefors crystal, handwoven sweaters and much more.

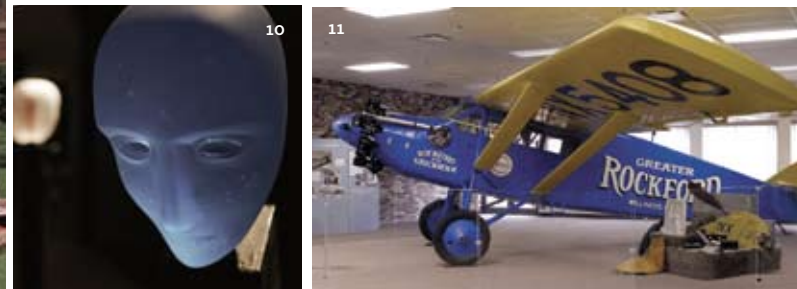
Keeling-Puri Peace Plaza / N. Perryville Rd., South of Riverside Blvd., Loves Park, IL 61111 / www.keeling-puri-peaceplaza.com / A 2.5-acre park showcasing 40 flags, 30 languages, 10 prophets of peace, two hemispheres and one world. The plaza is also the head of Rockford’s 20-mile Perryville Path network of bicycle and recreational trails.

Kegel Harley-Davidson/Buell / 7125 Harrison Ave., Rockford, IL 61112 / 815.332.7125 / www.kegelmotorcycles.com / Visit the world’s oldest family-owned Harley-Davidson dealership and browse the showroom, then grab a bite to eat at Kegel’s Diner, a classic 50’s home-style diner.

Rockford Art Museum / 711 N. Main St., Rockford, IL 61103 / 815.968.2787 / www.rockfordartmuseum.org / Rockford Art Museum is Illinois’ largest art museum outside of Chicago, with more than 1,500 works of art.

St. Lucia Festival / First Lutheran Church / 404 South 3rd Street / Rockford, IL 61104 / In the December cold, experience the heartwarming St. Lucia Festival – a beautiful Scandinavian tradition celebrating the winter solstice. For more information email museum@swedishhistorical.org.

Midsommar Festival / First Lutheran Church / 404 South 3rd Street / Rockford, IL 61104 / Join us Saturday, June 18th for this wonderful celebration of Swedish heritage, traditions, arts, language and activities. For more information, email museum@swedishhistorical.org.



- 1 Coronado Performing Arts Center
- 2 Keeling-Puri Peace Plaza
- 3 Rick Nielsen at the Stockholm Inn
- 4 Finials
- 5 Midsommar Festival
- 6 Lucia Festival
- 7 Erlander Home Museum
- 8 Kegel Harley-Davidson
- 9 Carl Milles Angels at Anderson Japanese Gardens
- 10 Rockford Art Museum
- 11 Midway Village



Chicago

It's easy to get a sense of Sweden in Chicago—just head straight to Andersonville and stroll the streets—known for its unique commercial district, made up almost entirely of independent, locally-owned specialty shops, restaurants, and service providers, complete with Swedish-speaking staff. Andersonville is where it's at!

A SWEDISH DAY IN CHICAGO

8 If you're getting into Chicago the night before and find yourself in the mood for authentic Swedish fare, be sure to experience the **Tre Kronor** and its cozy bistro setting. And if a little nightcap is in store, cruise into Andersonville and take a seat at **Simon's Tavern**. This iconic pub opened in 1934. Its ceramic and glass block-clad façade has appeared like a beacon in the night to pub-goers of all nationalities with its neon sign depicting a fish holding a martini. This fish turns out to be a double entendre - "pickled herring" - a delicacy in Sweden.

After a great breakfast at **Swedish Bakery** head to the **Swedish American Museum**, the hallmark of Swedish Heritage in Chicago. The museum opened in 1976 in a ceremony that was attended by King Carl XVI Gustaf of Sweden. Its popularity allowed the museum to move to a new, 24,000 square-foot gallery featuring rotating art exhibits and the permanent exhibit *The Dream of America - Immigration to Chicago*. Be sure to stop by the Brunk Children's Museum of Immigration, library, genealogy center and museum store.

Feel like a little shopping but for a great cause? Visitors also rave about the **Sweden Shop**, a Scandinavian department store located about a mile west of Andersonville,

where you can find the latest in textiles, housewares, clothing, books and children's ware.

If you're in town during the summer months, be sure to experience the **Andersonville Midsommarfest**. Started in 1965, it is one of the region's most eagerly anticipated and well established summer festivals. Every year about 50,000 people gather on Clark Street to enjoy great international food, stellar family activities, lively entertainment on four stages and over 100 quality artisans showcasing their wares. Old-world Swedish traditions, including a festive dance around the Maypole, are incorporated into an unrivaled array of entertainment for families and adults.



CHICAGO, ILLINOIS

ANDERSONVILLE SWEDISH ATTRACTIONS

Ann Sather's / 5207 N. Clark, Chicago, IL 60640 / 773.271.6677 / www.annsather.com / Swedish restaurant founded over 60 years ago, the iconic establishment features Scandinavian fare and focuses on serving the community with its generous support of local organizations and causes.

Erickson's Delicatessen / 5250 N. Clark, Chicago, IL 60640 / 773.561.5634 / Since 1925, people have flocked to Erickson's for their famous brown beans, cheese, crispbread, flatbread, preserves, cookies, chocolates and seafood. Erickson's features an extensive inventory of rare Scandinavian foodstuff, including fresh lingonberries.

Midsummer Festival / June Festival / 2500 W. Bryn Mawr Ave. between Lincoln & Western Avenues / 773.555.0000 / www.chicagoevents.com/ You won't find a better location in which to celebrate the start of summer. In addition to food and libations, the 3-day MidSummer Festival features live music, arts & crafts, activities for kids and plenty of community fun!

Simon's Tavern / 5210 N. Clark, Chicago, IL 60640 / 773.878.0894 / www.simonstavern.com / Since the Great Depression, Simon's has been an anchor in the Swedish enclave of Andersonville. Featuring fish drinking martinis, glögg, Viking paraphernalia, and ancient Schlitz advertising, Simon's is not only an excellent neighborhood bar but also an interesting experience for anyone that steps within its friendly environs.

Svea Restaurant / 5236 N. Clark, Chicago, IL 60640 / 773.275.7738 / Located in the heart of Andersonville, this intimate restaurant serves family fare with a Swedish accent. Svea I is known for many dishes, but the Swedish meatball sandwiches, herring salads, open-faced sandwiches and Swedish-style roast beef are local favorites.

Swedish American Museum Center / 5211 N. Clark, Chicago, IL 60640 / 773.728.8111 / www.swedishamericanmuseum.org / The Swedish American Museum is a nonprofit museum and cultural center for the education, celebration and interpretation of Swedish American history

and culture in Chicago, Illinois, USA.

Swedish Bakery / 5348 N. Clark, Chicago, IL 60640 / 773.561.8919 / www.swedishbakery.com / An Andersonville institution, the Swedish Bakery is famous for its coffeecakes, cookies, sweet rolls, toast, petit fours and marzipan cakes. The iconic bakery is known for using unique ingredients such as cardamom, saffron, anise, fennel, orange peel and almond paste.

OTHER SWEDISH CHICAGO ATTRACTIONS

Tre Kronor / 3258 W. Foster Ave., Chicago, IL 60625 / 773.267.9888 / www.trekronorrestaurant.com / Owners Larry Anderson (Swedish) and Patty Rasmussen (Norwegian) combine authentic Swedish fare with the richness and style of French cuisine. From the Oslo Omelet and Falukorv Sausage to their Köttbullar (meatballs) and Kycklingfile (chicken), many customers comment that their dishes remind them of their Swedish grandma's dishes.

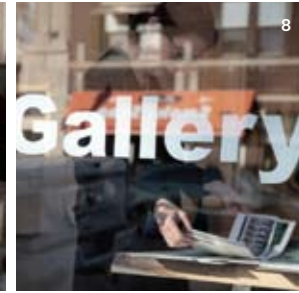
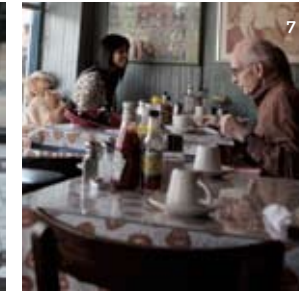
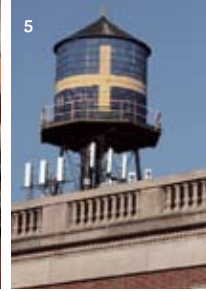
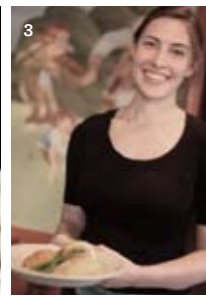
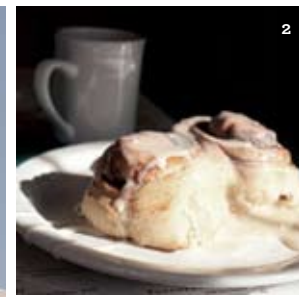
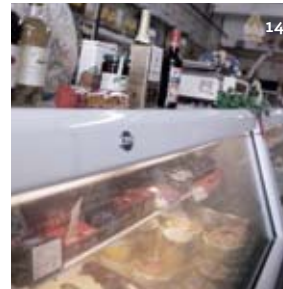
The Sweden Shop / 3304 W. Foster Ave., Chicago, IL 60625 / 773.478.0327 / www.theswedenshop.com / Very nice selection of goods including the latest in textiles, housewares, clothing, books and children's ware - from Denmark, Norway, Sweden and Finland.

OTHER NOTABLE ANDERSONVILLE ATTRACTIONS

Brown Elephant Resale Shop / 5404 N. Clark, Chicago, IL 60640 / 773.271.9382 / www.howardbrown.org / Great second hand store where more than 740,000 items are sold annually. The revenue generated by donations and purchases at the Brown Elephant Shops help fund services for the more than 50% of Howard Brown clients who are under- or uninsured.

Hopleaf Bar / 5148 N. Clark, Chicago, IL 60640 / 773.334.9851 / www.hopleaf.com / Famous for its huge beer selection, the Hopleaf is an iconic Andersonville establishment.

The Neo-Futurists / 5153 N. Ashland Ave, Chicago, IL 60640 / 773.275.5255 / www.neofuturists.org / A collective of wildly productive producers/writers/performers, the Neo-Futurists have produced more than 6,000 two-minute plays, and more than 60 full length plays or site-specific theatrical events. Thursday Nights at The Neo-Futurarium are always pay-what-you-can.



10

10

11

14

15

16

17

- 1 Swedish American Museum Center
- 2 + 3 Ann Sather's
- 4 + 11 Hopleaf Bar
- 5 Swedish Water Tower

- 6 Brown Elephant
- 7 Svea Restaurant
- 8 Local Art Gallery
- 9 Neo-Futurist Theater
- 10 The Sweden Shop

- 12 + 13 Swedish delights
- 14 + 15 Erickson's Deli
- 16 U.S. Flag in Andersonville
- 17 Swedish-American art

Visit choosechicago.com for more information!



Bishop Hill

Experience the history of this once-bustling 19th century settlement—now a National Landmark Village. Bishop Hill is a quiet country village that has been steeped in Swedish heritage since 1846—and nothing could be more evident than when you visit the town’s fascinating museums, quaint eateries, unique gift shops, and art galleries. For a true peek into the past, be sure to visit Bishop Hill during one of its seasonal festivals and holiday celebrations.

12

A DAY IN BISHOP HILL

Make it a morning of Swedish American history at the **Bishop Hill Heritage Association Museum**. Its Steeple Building, built in 1854, was home to an array of Swedish Colonists and houses many of their original items. Visit the **Bishop Hill Museum** to get a glimpse of Bishop Hill Colony life brought to life through artist Olaf Krans. And be sure to inspect the architecture of the old Bjorkland Hotel museum—beginning in the mid 1800s the Bjorkland provided lodging for sales clerks, journalists, immigrants, and visitors to the Bishop Hill Colony.

Shop the past and present for Swedish and American delicacies and collectibles, and work up an appetite in the process, at the **The Colony Store**. This historic general store was built in 1853. Are you hungry yet? If so, grab a delectable bite at **PL Johnson Dining Room**—you’ll find exceptional Swedish and American fare with unquestionably the best homemade bread pudding.

After lunch, stimulate your visual senses at the **Prairie Arts Center** and upstairs at the VagnHall Galleri, where local artisans are featured offering fine art of all mediums for

viewing and sale. The Arts Center has demonstrations of pottery, weaving and rug making. The afternoon of Swedish arts continues at the **Feathered Nest at Windy Corner Farm** where you find hand carved and marbled eggshells, vintage jewelry, mid-century glass giftware and exquisite everlasting wreaths and arrangements.

If you have a sweet tooth, be sure to experience the **Bishop Hill Colony Bakery** for delicious homemade pastries, coffee cakes, breads, cookies, pie and Swedish specialties. In nearby Andover, visit the **Jenny Lind Chapel** named after the famous opera singer Jenny Lind, the “Swedish Nightingale.” It is considered the mother church of the former Augustana Lutheran Church of America. It hosts a museum of early immigrant experiences through exhibits, audio and video.

Andover Historical Museum & Grounds
The home of August Rehnstrom built in 1861 by Eric Berglof, served as a temporary haven for 1850’s Swedish immigrants.

In Galesburg, visit the **Carl Sandburg State Historic Site**. The birthplace and burial site of America’s premier poet and Lincoln biographer is featured in this three room cottage with museum displays. Quotation walk and Remembrance Rock is open for viewing.



BISHOP HILL, ILLINOIS

BISHOP HILL ATTRACTIONS

Bishop Hill Heritage Association Museum / The Steeple Building / 103 North Bishop Hill St., Bishop Hill, IL 61419 / 309.927.3899 / Built in 1854, the Steeple Building is home to an array of Swedish Colonists original items.

BISHOP HILL STATE HISTORIC SITES

Bishop Hill Museum / 304 S. Bishop Hill St., Bishop Hill, IL 61419 / 309.927.3345 / www.illinoishistory.gov/hs/bishop_hill.htm / A glimpse of Bishop Hill Colony life brought to life through artist Olaf Krans.

Bishop Hill Colony Bakery, The / 103 S. Bishop Hill Street, Bishop Hill, IL 61419 / 309.927.3042 / www.bishophillcolonybakery.com / Homemade pastries, coffee cakes, breads, cookies, pie and Swedish specialties.

14 **Bjorkland Hotel /** 209 Main St., Bishop Hill, IL 61419 / 309.927.3345 / This structure began providing lodging for sales clerks, journalists, immigrants, and visitors to the Bishop Hill Colony.

Colony Church / 101 Maiden Ln., Bishop Hill, IL 61419 / 309.927.3345 / This fully-restored Church from 1848 provides a glimpse into Colonists' lives.

Colony Store, The / 101 W. Main St., Bishop Hill, IL 61419 / 309.927.3596 / Shop the past and present in this 1853 general store for Swedish and American delicacies and collectibles.

Henry County Historical Museum / 202 S. Park St., Bishop Hill, IL 61419 / 309.927.3528 / Thousands of agricultural, military and rural America historical artifacts tell the Henry County story in a one-story museum.

Vasa Order of American Archives / 109 S. Bishop Hill St., Bishop Hill, IL 61419 / 309.927.3898 / www.vasaorder.com / Contains collections of historical Swedish American records and artifacts.

Prairie Arts Center / 203 N. Bishop Hill St., Bishop Hill, IL 61419 / 309.927.3008 / Demonstrations of pottery, weaving and rug making. Handmade gifts are also available.

Pl. Johnson Dining Room / 110 W. Bjorkland St., Bishop Hill, IL 61419 / 309.927.3885 / Exceptional food, American and Swedish. Delicious desserts

Feathered Nest at Windy Corner Farm / 508 W. Main St., Bishop Hill, IL 61419 / 309.927.3033 / www.windycornerfarm.com / Egg art including hand carved and marbled eggshells, vintage jewelry, and mid-century glass giftware.

VagnHall Galleri / 203 Bishop Hill St., Bishop Hill, IL 61419 / 309.927.3008 / www.bishophillpottery.com / Local artisans featured, offering fine art of all mediums for viewing and sale.

OTHER NOTABLE BISHOP HILL AREA ATTRACTIONS

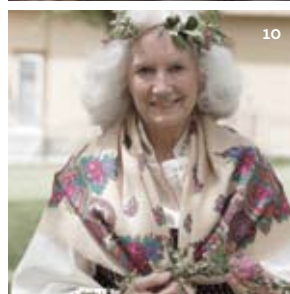
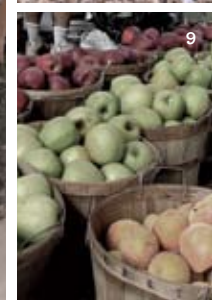
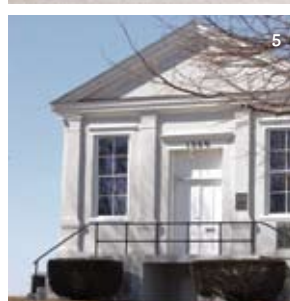
Andover Jenny Lind Chapel / 604 Oak St., Andover, IL / 309.521.8127 / www.jennylindchapel.org / Named after the famous opera singer Jenny Lind, the "Swedish Nightingale." It hosts a museum of early immigrant experiences through exhibits, audio and video.

Andover Historical Museum & Grounds / 408 Locust St., Andover, IL / The home of August Rehnstrom built in 1861 by Eric Berglof. The house served as a temporary haven for 1850's Swedish immigrants.

Carl Sandburg State Historic Site / 331 East Third St., Galesburg, IL / 309.342.2361 / www.sandburg.org / The birthplace and burial site of America's premier poet and Lincoln biographer is featured in this three room cottage with museum displays. Quotation walk and Remembrance Rock is open for viewing.

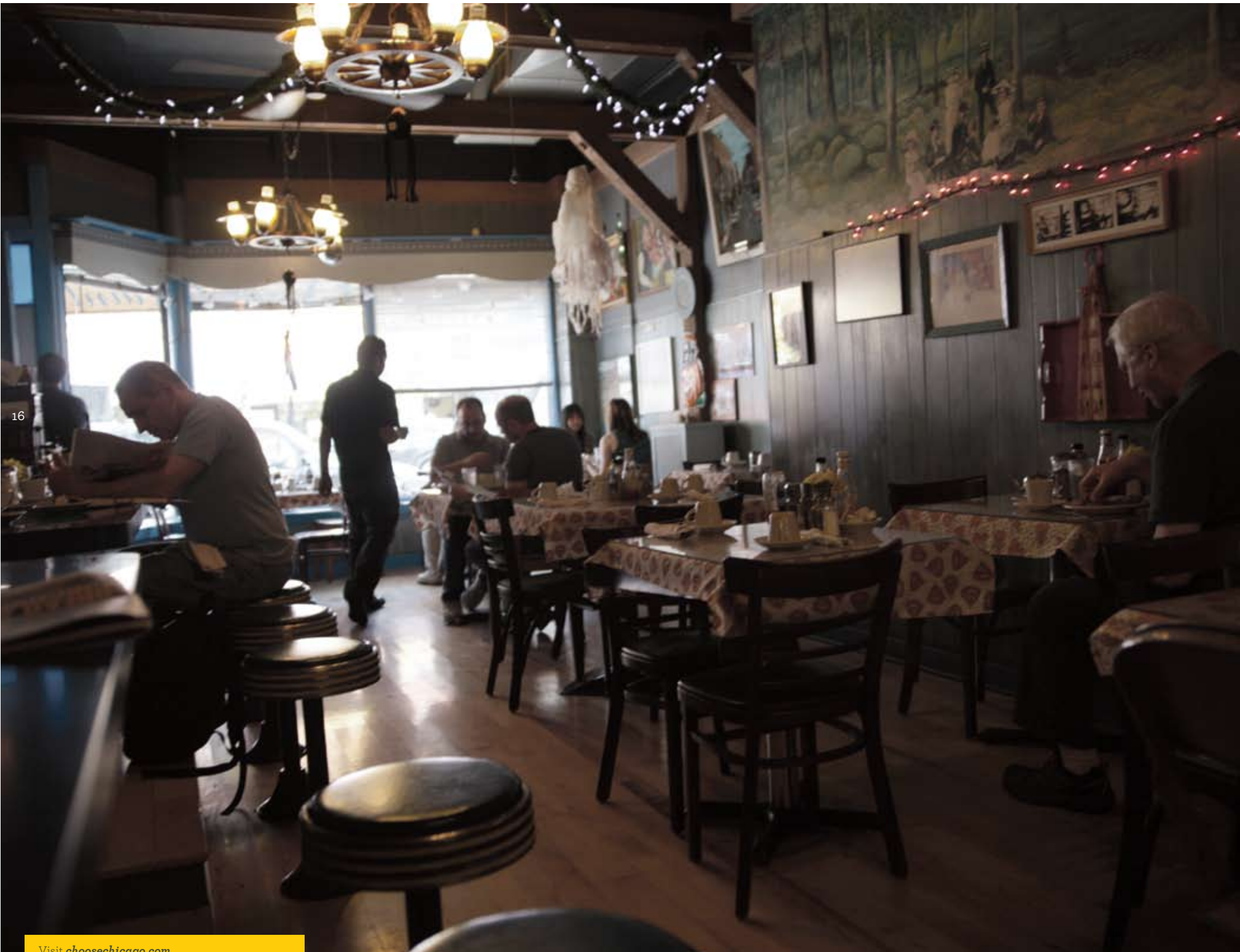
Hathaway's Gift Barn / 204 Exchange St., Galva, IL 61434 / 309.932.2455 / www.hathawaygiftbarn.webs.com / Eclectic shopping for gifts, home decor and Christmas ornaments located in the Bishop Hill Colony warehouse just five minutes from Bishop Hill.

Ryan's Round Barn / 28616 Sauk Trail Rd., Kewanee, IL 61433 / 309.852.4262 / A piece to the past this 100-year old round barn features three levels including an 80 foot high center silo with a 10 foot cupola. One of 42 remaining in the state of Illinois. Features a glimpse of agricultural history with a large display of machinery and implements.



Visit bishophill.com for more information!

- 1 The Colony Store
- 2 Bjorkland Hotel Kitchen
- 3 Brick Making at Bishop Hill
- 4 Vasa Youth
- 5 Jenny Link Chapel
- 6 Rug Weaving at Prairie Arts Center
- 7 Julmarknad Holiday Impression Weekend
- 8 Steeple Building
- 9 Farmers' Market
- 10 Woman in Authentic Swedish Garments
- 11 Bishop Hill Original Brick Impression
- 12 Maypole Dancing (June)



16

17

Visit choosechicago.com
for more information!



Visit gorockford.com
or call 815.963.8111 for more details!

ROCKFORD TRANSPORTATION INFO

CAR OR MOTOR COACH TRAVEL

Located at the intersection of I-90 and I-39 in North Central Illinois, the Rockford Region is an easy drive from Chicago (60 miles from O'Hare), Madison (60 miles) or Milwaukee (80 miles).

CAR RENTAL

A Value Plus Auto Rental & Leasing / 815.316.9400 / www.valueplusauto.com
Alamo Rent-a-Car / 815.965.4466, (Toll Free) 800.906.5555 / www.alamo.com
Avis / 815.962.8447,
Enterprise / 815.397.1400, (Toll Free) 800.261.7331 / www.enterprise.com
Hertz / 815.963.5318, (Toll Free) 815.391.6238, 800.654.3131 / www.hertz.com
National / 815.965.4466 / www.nationalcar.com

TAXICAB SERVICES:

ASAP Transport, LLC / 815.654.2727
C & W Transport / 815.978.6188
Need A Lift / 815.874.0371
Reliable Cab / 815.968.2227
Spee-Dee Taxi Cab Service / 815.963.3322
Yellow Line Cab and Limousine / 815.962.5511

BUS AND SHUTTLE SERVICE:

Coach USA / www.coachusa.com / Provides 17 shuttles daily between Rockford's major hotels and Chicago's O'Hare International Airport (ORD) and eight shuttles daily between Rockford and Midway Airport (MDW).

Coach USA Amtrak Thruway / www.amtrak.com / Buses travel to downtown Chicago and Union Station five times a day (from Rockford). From Union Station you can connect with Amtrak's national rail system. 1.800.USA.RAIL

The Rockford Mass Transit District (RMTD) / www.rmtd.org / Provides service to Rockford, Loves Park and Machesney Park. 815.961.9000

Rockford Charter Coach /

www.rockfordchartercoach.com / Offers a 15-passenger van for charter to serve small groups. 815.387.9122, (toll-free) 800.332.0906

AIR TRAVEL

Airport: Chicago Rockford International Airport (RFD) / 815.969.4000 / flyrfd.com / Offers a variety of flight options and locations, as well as free parking.

HELPFUL TRAVEL TIPS FOR INTERNATIONAL VISITORS

Tips & Gratuities: American tipping customs are different from those in other countries, and are very subjective. Here are some guidelines.

- Restaurant waiters/waitresses: 15% for good service, 20% for outstanding service.
- Hotel porters: \$2 per bag.
- Hotel maids: \$2 per night, at the end of your stay.
- Hotel room service: many hotels automatically include a gratuity; if not, 15%.
- Taxi drivers: 15%, or for very short rides, round it up to the next dollar.
- Credit Cards: The most commonly accepted credit cards in the American Midwest are MasterCard, Visa, Discover and American Express.

FOREIGN CURRENCY EXCHANGES:

1. Exchange currency at your arrival airport.
2. Use your bank card, cash card or automated teller card (ATM) to withdraw US dollars from machines throughout America.
3. Use your credit card to pay for rooms, meals and other purchases (Your credit card company will automatically give you the most current exchange rate).
4. As a last resort, exchange currency from Canada, Sweden, Switzerland, United Kingdom at the main Chase Bank, 401 E. State St., Rockford, IL 61104 (Phone: 815.987.2424).
5. Outside major airports, American places with "Currency Exchange" signs seldom exchange international currency (They cash checks, issue money orders, collect utility bills, etc.).

INTERNATIONAL PHONE CARDS: May be purchased at many discount stores and convenience stores.

GROUP TOURS: A variety of group tour packages are available for international visitors. Email sales@gorockford.com to learn more.





Rockford Area Convention & Visitors Bureau
 / 102 N. Main St., Rockford, IL 61101 /
 p. 815.963.8111 / f. 815.963.4298 /
 w. gorockford.com / e. info@gorockford.com

In Sweden, contact / Johnny Gardsater /
 p. +46 (8) 54525942 / e. jgardsater@gorockford.com

Real. Original.
ROCKFORD
 ILLINOIS, USA

CHICAGO
ILLINOIS
Simply Magnificent

 youtube.com/
gorockfordregion

 twitter.com/gorockford

 facebook.com/
gorockfordregion