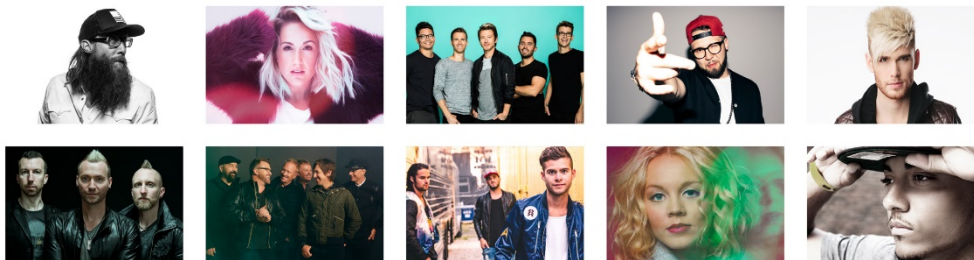




## Winter Jam Rolls Out 2017 Lineup at Hard Rock Celebration

Annual Christian Rock Tour Heads to SMG-managed Van Andel Arena® January 8, 2017



**Grand Rapids**— A capacity crowd of artists, industry and VIP fans gathered at Nashville's Hard Rock Café last night for the highly anticipated reveal of the **Winter Jam Tour Spectacular's** 2017 lineup. Featuring performances from multiple newly announced tour artists, the launch party was exclusively live-streamed to viewers around the world via [jamtour.com](http://jamtour.com).

The annual multi-artist extravaganza—one of the world's leading first quarter tours—Winter Jam 2017 is set to showcase 10 of Christian music's best and brightest artists: multi GRAMMY®-nominated singer/songwriter **Crowder**; Top 40 hit-maker and GRAMMY®-nominee **Britt Nicole**; Dove Award-winning fan favorites **Tenth Avenue North**; breakout pop/hip-hop recording artist **Andy Mineo**; Dove Award-winning singer/songwriter and "American Idol" finalist **Colton Dixon**; best-selling rockers **Thousand Foot Krutch**; and GRAMMY®-nominated Winter Jam creators and tour hosts, **NewSong**. In addition, the Pre-Jam Party, sponsored by Israel: Land of Creation, will feature **OBB**, **Sarah Reeves** and **Steven Malcolm**. The tour will also be highlighted by a special appearance from "Duck Dynasty" television star **Sadie Robertson**, as well as a message from acclaimed author, speaker and evangelist **Tony Nolan**.

### Convention Arena Authority

Steve Heacock  
Chairman

Hon. Rosalynn Bliss

Lew Chamberlain

Birgit M. Klohs

Charlie Secchia

Floyd Wilson, Jr.

Richard A. Winn

**Van Andel Arena**  
130 West Fulton  
Grand Rapids, MI  
49503-2601  
616.742.6600



GRAND RAPIDS-KENT COUNTY  
CONVENTION / ARENA AUTHORITY  
ENTERTAINMENT, CONVENTION, SHOW & SPORTS FACILITIES



Presented by Holt International, Winter Jam 2017 kicks-off January 6 at the Charleston Civic Center in Charleston, West Virginia, hitting a total of 46 cities through early April, including a stop in Grand Rapids at [Van Andel Arena](#) on **Sunday, January 8, 2017 at 6:00 PM**. The Pre-Jam Party will be at 5:00 PM.

**General admission is \$10 at the door**, with premium Jam Nation memberships available in advance at [jamtour.com](#). Citizens of Jam Nation receive early entry and seating, as well as exclusive tour merchandise, among other perks.

"We've had a great time this evening celebrating Winter Jam and introducing next year's lineup," said Winter Jam creator and NewSong founding member, Eddie Carswell. "I'm so excited to hit the road with all these amazing artists for 46 nights of fantastic music and life-changing ministry. As we look ahead to 2017, our prayer is simply that God will continue to bless this tour and use it for His glory."

Founders and hosts of the Winter Jam Tour Spectacular, NewSong's iconic career has spanned more than 30 years and includes 20 albums, 20 #1 Christian radio singles, a #1 mainstream AC hit, a GRAMMY® Award nomination and induction into the Georgia Music Hall of Fame, among numerous other achievements. One of the most beloved bands in Christian music, the group's discography includes such defining songs as "Arise, My Love," "Rescue," "The Same God," and the blockbuster holiday favorite, "The Christmas Shoes."

Winter Jam exploded from a single show in 1995 to the world's #1 first-quarter tour for four consecutive years, according to *Pollstar*. Throughout two decades, Winter Jam has helped provide a powerful platform for the Gospel in major arenas nationwide, consistently showcasing Christian music's brightest stars. The tour's storied history was documented in April's one-night national box-office release, "This Is Winter Jam," presented by Fathom Events and WORD Entertainment. Last year Winter Jam played to more than 700,000 people across the country, shattering the tour's previous attendance records.

#### About SMG

SMG has managed DeVos Place since 1994 and Van Andel Arena since 1996. Founded in 1977, SMG provides management services to more than 240 public assembly facilities including convention and exhibition centers, arenas, stadiums, theatres, performing arts centers, equestrian facilities, science centers and a variety of other venues. With facilities across the globe, SMG manages more than 14.4 million square feet of exhibition space and over 1.75 million sports and entertainment seats. As the recognized global industry leader, SMG provides venue management, sales, marketing, event booking and programming, construction and design consulting, and pre-opening services for such landmark facilities as McCormick Place & Soldier Field in Chicago, Moscone Convention Center in San Francisco, Houston's NRG Park and the Mercedes-Benz Superdome. SMG also offers food and beverage operations through its concessions, catering and special events division, SAVOR, currently servicing more than 130 accounts worldwide. For more information, visit [smgworld.com](#).

**Van Andel Arena**  
130 West Fulton  
Grand Rapids, MI  
49503-2601  
616.742.6600



GRAND RAPIDS-KENT COUNTY  
CONVENTION / ARENA AUTHORITY  
ENTERTAINMENT, CONVENTION, SHOW & SPORTS FACILITIES