

# HERSHEY HARRISBURG REGION **GROUP PLANNER**



[Groups.VisitHersheyHarrisburg.org](http://Groups.VisitHersheyHarrisburg.org)



# Welcome!

Planning a group outing to the Hershey Harrisburg Region can be hassle-free when you enlist the experts at the Hershey Harrisburg Regional Visitors Bureau (HHRVB). Our sales team works closely with a wide variety of group-friendly venues and services, and we'll work diligently to make sure the planning process is streamlined and hassle-free. To see all that the region has to offer, browse through the listings in this publication and go to [Groups.VisitHersheyHarrisburg.org](http://Groups.VisitHersheyHarrisburg.org). Then, contact Group Tour Sales Manager, Sandy Wenner, to start planning your group's visit with us here in the Hershey Harrisburg Region. See you soon!

## Group Planner Services

Promotional Support  
VIP Greetings  
Local Attraction Information  
Housing Coordination/Online Housing Bureau  
Referrals for Entertainment & Spousal Tours

On-site Support  
Staffed Hospitality Table  
Site Inspections  
Shuttle Service Referrals & Coordination  
Venue Procurement



Sandy Wenner  
Group Sales Manager  
717.231.2988  
[Sandy@hersheyharrisburg.org](mailto:Sandy@hersheyharrisburg.org)



Audrey Bialas  
Director of Sales  
717.231.2993  
[Audrey@hersheyharrisburg.org](mailto:Audrey@hersheyharrisburg.org)

## Table of Contents

|                             |    |
|-----------------------------|----|
| Welcome .....               | 2  |
| Itineraries .....           | 4  |
| Events & Entertainment..... | 6  |
| Attractions.....            | 7  |
| Lodging.....                | 25 |
| Dining.....                 | 43 |
| Services.....               | 48 |
| Transportation .....        | 51 |



The Hershey Harrisburg Regional Group Planner is the official meeting planner of the Hershey Harrisburg Regional Visitors Bureau. Photos throughout this publication are courtesy of the Hershey Harrisburg Regional Visitors Bureau unless otherwise indicated.

Copyright 2016 by Hershey Harrisburg Regional Visitors Bureau. All rights reserved. Reproduction or use without permission of editorial or graphic content in any manner, including electronic reproduction, is prohibited.

# Getting Here!

The Hershey Harrisburg region is within a few hours traveling distance of many major cities and is easily accessible by the Pennsylvania Turnpike, Amtrak's® Keystone Service, and Harrisburg International Airport (MDT), which offers nearly 100 flights a day.



## FLY NONSTOP FROM

Atlanta – Delta  
Boston – American  
Charlotte – American  
Chicago O'Hare – American/United

Detroit – Delta  
Orlando Sanford – Allegiant  
Philadelphia – American  
Punta Gorda/Ft. Myers – Allegiant

St. Petersburg/Clearwater – Allegiant  
Toronto – Air Canada  
Washington DC – United

# ITINERARIES



## HERSHEY – CHOCOLATE AND MORE!

### **Hershey's Chocolate World**

Enjoy the newly-renovated Free Chocolate Tour Ride, complete with a free Hershey's product sample! Activity options include Create Your Own Candy Bar, the New Chocolate Tasting Experience, 4D Chocolate Mystery digital animation show and more. Stock up on your favorite (and hard-to-find) Hershey brand confections in the world's largest candy store. You'll create warm memories that last a lifetime at *HERSHEY'S CHOCOLATE WORLD Attraction*.

### **The Hershey Story, The Museum on Chocolate Avenue**

For well over 100 years, the word "Hershey" has been synonymous with the Great American Chocolate Bar. Now, The Hershey Story takes visitors on an inspirational journey through the life of Milton S. Hershey. Learn about the man, his chocolate company, the town that bears his name and his generous philanthropic legacy. No visit to

Hershey is complete without a 45-minute, hands-on class in the Chocolate Lab!

### **Spotlight Tour of Hershey Theatre**

It's the tour that takes you behind the scenes of one of the most impressive theatres in the state. From the elegance of the Grand Lobby to the foyer's "canopy of gold" to the distinct marble walls and arches, each section of the building helps to tell the story of part of Milton Hershey's "Great Building Campaign" of the Great Depression.

### **Hershey Gardens**

What began as a request from Mr. Hershey for a "small garden of roses" is now more than 20 acres of breathtaking flower beds, tree groves and shrub-lined pathways in gardens overlooking the town of Hershey. A new 14,000 square foot conservatory opens this summer to make the Gardens a year-round destination.

### **Founders Hall at the Milton Hershey School**

Dedicated in September, 1970, Founders Hall was built as a tribute to Milton S. and Catherine Hershey. More than 50 thousand visitors tour Founders Hall each year to learn about the philanthropic legacy of the Hersheys and their dedication to helping underprivileged children. The building is an architectural wonder, and houses the story of the Milton Hershey School.

### **Troegs Brewing Company**

Sometimes the true story of a region is in the taste! Tour and taste at Troegs, a local brewery-turned-Mid-Atlantic-brewing-legend built up by two brothers with a love of flavor and hops. And the "Snack Bar" is no ordinary snack bar! The region's best chefs create some spectacular dishes to accompany both the latest scratch and time-tested flavors.



# ITINERARIES



## STEP INTO OUR PAST

### Fort Hunter Mansion

This beautiful Victorian Era mansion overlooking the Susquehanna River hold stories of the French and Indian War, northern slaves, frontier villages, trade depots and more. The green space surrounding the mansion is home to themed festivals throughout the year and is one of the top "photo op" spots in the region.

### Simon Cameron Mansion

The stately elegance of this riverfront mansion is fitting of its historic owners, the first of whom was the first European settler to the region – John Harris Sr., an associate of William Penn. Another occupant, Simon Cameron, served (with controversy) as Abraham Lincoln's Secretary of War.

### PA State Capitol

Teddy Roosevelt called it "the handsomest building" he'd ever seen upon looking up into the Capitol Dome, which was architecturally inspired by St. Peter's Basilica in Rome. Free tours are held year-round in this "Palace of Art," where the intricate craftsmanship and one-of-a-kind works are the very definition of priceless.

### National Civil War Museum

The National Civil War Museum is known as the nation's most complete collection of Civil War artifacts telling the story of the war from both sides. Reenactors are shown on digital screens throughout the exhibit space as they tell "their" stories. Exhibits range from the confirmed weapons of high-ranking officers to the makeshift knives and scalpels used by field medics.

### Army Heritage Museum

The U.S. Army Heritage and Education Center is a premiere indoor and outdoor facility dedicated to "Telling the Army story...one Soldier at a time." The campus includes the Visitor and Education Center, the U.S. Army War College Library, the U.S. Army Military History Institute and the Army Heritage Trail.

### AACA Museum

America's love affair with cars fuels the heart of this Smithsonian-affiliated museum in Hershey, PA. It's more than just cars though, it's motorcycles and buses and artwork and automotive ingenuity. Exhibits cover the 1890s through the 1980s.



# EVENTS & ENTERTAINMENT

## SPRING

### **Springtime in the Park at Hersheypark** April 2–3 & 9–10, 2016

One of the nation's most loved theme parks awakens from its winter slumber for two weekends in April. Bring the entire family for a multi-generational getaway to the Sweetest Place on Earth®!

[hersheypark.com](http://hersheypark.com)

### **Spring Sensations of May with the Hershey Harrisburg Wine Country** May 7–8, 14–15, 21–22, 2016

Spend Springtime Saturdays and Sundays sipping local, hand crafted wines at the wineries of Hershey Harrisburg Wine Country. One ticket covers entry, tastings and a variety of seasonal special events staged at all participating wineries for the entire 3-weekend event.

[hersheyharrisburgwinecountry.com](http://hersheyharrisburgwinecountry.com)

## SUMMER

### **Patriot-News/PennLive Artsfest Memorial Day Weekend, 2016**

Summer officially arrives with the annual Artsfest event. Enjoy arts and crafts, food vendors and live entertainment all set up along Front Street overlooking the Susquehanna River in Harrisburg.

[jumpstreet.org/events/artsfest/](http://jumpstreet.org/events/artsfest/)

### **Museum of Bus Transportation Spring Fling** June 4, 2016

The Museum of Bus Transportation invites you to their annual Spring Fling at the AACA Museum in Hershey. Visitors can see the largest collection of antique buses on display in the United States.

[aacamuseum.org](http://aacamuseum.org)

### **Elegance at Hershey** June 10–12, 2016

Classic car enthusiasts from around the world arrive at the grounds of the Hotel Hershey each year to take in this one-of-a-kind charity event. The Elegance is an automotive garden party featuring the finest collector vintage and antique cars in the world.

[theeleganceathershey.com](http://theeleganceathershey.com)

### **Mecum Car Auction** July 21–24, 2016

Mecum shows in Harrisburg for 2014 and 2015 averaged \$20 million in sales and 20,000 attendees looking for a chance to drive away in a dream car. Bid or browse for some of the most pristine collector cars, trucks, motorcycles and tractors in the world.

[mecum.com](http://mecum.com)

### **Joyce Meyer Ministries** August 25–27, 2016

Christian author and speaker Joyce Meyer will share a powerful spiritual message with thousands of attendees during the three-day conference at Giant Center.

[joycemeyer.org](http://joycemeyer.org)

## FALL

### **AACA Eastern Division National Fall Meet** October 5–8, 2016

This enormous car meet is known as the largest antique car show and flea market in the country with an incredible 9,000 flea market spaces and upwards of 1,500 cars on display. Car enthusiasts know that the first full week in October is "Meet Week" in Hershey, the perfect time to head to Hershey for the meet and trips to nearby attractions.

[hersheyaaca.org/fallmeet.html](http://hersheyaaca.org/fallmeet.html)

### **Hershey Harrisburg Wine Country's Cornucopia Wine Quest**

October 22–23 & 29–30, 2016

Visit the region during its beautiful fall season and travel between participating wineries to experience this progressive tasting event. One ticket covers entry, tastings and seasonal activities for each winery on both weekends.

[hersheyharrisburgwinecountry.com](http://hersheyharrisburgwinecountry.com)

## HOLIDAY

### **Hersheypark Christmas Candylane** Mid-November through December, 2016

Classic rides, sparkling light displays and holiday-themed live entertainment make Hersheypark an incredible destination during the holidays. Santa's reindeer rest up in their stable for their big night.

[hersheypark.com](http://hersheypark.com)

### **Hershey Sweet Lights** Mid-November through December, 2016

This spectacular drive-thru light display will leave visitors with the warm feelings of the holidays. Drive the motorcoach right through nearly 600 illuminated displays in the fields across from Hersheypark.

[hersheypark.com](http://hersheypark.com)

### **Dinner Theatre at Hershey Lodge** Mid-November through December, 2016

Join us for A Chocolate Avenue Christmas and rediscover why Christmas is the most beautiful time of the year in Hershey.

[hersheyharrisburgwinecountry.com](http://hersheyharrisburgwinecountry.com)

## 2017

### **Pennsylvania Farm Show** January 7–14, 2017

Pennsylvania's agricultural heritage is celebrated in grand fashion with this massive, annual show. The family-friendly event features thousands of livestock, competitive exhibits, mouthwatering PA Preferred foods in the famous food court and more crowd favorites like the Sheep to Shawl contest and tractor square dancing.

[farmshow.state.pa.us](http://farmshow.state.pa.us)

### **Great American Outdoor Show** February 4–17, 2017

The world's largest outdoor show covers 650,000 square feet of space when this event comes to PA Farm Show Complex & Expo Center. This event highlights all things hunting, fishing, camping and more for outdoor enthusiasts of all ages.

[greatamericanoutdoorshow.org](http://greatamericanoutdoorshow.org)

### **ValenWine's Weekends** February 11–12 & 18–19, 2017

Enjoy hand-crafted wines paired with chocolates from around the world. Many of the wineries in Hershey Harrisburg Wine Country will participate to host special events in their cozy tasting rooms. See the website for official hours of operation.

[hersheyharrisburgwinecountry.com](http://hersheyharrisburgwinecountry.com)



# ATTRACTIONS



## ADVENTURE SPORTS IN HERSHEY

3010 Elizabethtown Road, Hershey, PA, 17033  
717-533-7479 (Main) • 717-533-2959 (Fax)  
Email: [fun@adventurehershey.com](mailto:fun@adventurehershey.com)  
[AdventureHershey.com](http://AdventureHershey.com)

Family entertainment center features Go-Karts, Miniature Golf, Batting Cages, Golf Driving Range, Bumper Boats, Arcade, and Outdoor Laser Tag. Group packages are available for both professional and recreational needs. Outdoor Laser Tag is especially attractive for team building fun. Plan a laser tag outing on our three acre field. Either way, fun and memories are created. Now open year round.



VARIES



## THE AMISH EXPERIENCE

3121 Old Philadelphia Pike, Bird-in-Hand, PA, 17505  
717-768-8400 x210 (Main) • 800-555-2303  
717-768-7864 (Fax)  
Email: [PADutch@amishexperience.com](mailto:PADutch@amishexperience.com)  
[amishexperience.com](http://amishexperience.com)

In the heart of Lancaster's Amish Country, surrounded by Amish farms between Bird-in-Hand and Intercourse, you'll find the Amish Experience at Plain & Fancy Farm. Amish farmlands, house, and VIP tours; "Jacob's Choice" and new Magic Lantern Theater shows, all offer unique additions to any group or school excursion. Step-on guides, theme tours, lodging, and family-style dining also available.



VARIES



# ATTRACTIONS



## THE AMISH VILLAGE

199 Hartman Bridge Road, Ronks, PA, 17572  
(717) 687-8511 (Main) • 717-687-8478 (Fax)  
Email: [amber@theamishvillage.net](mailto:amber@theamishvillage.net)  
[theamishvillage.net](http://theamishvillage.net)

Spend some time in the heart of PA Dutch Country for a behind-the-scenes look at how Pennsylvania Amish live today. Take a guided tour through our 1840 Amish farmhouse, where our guide will discuss the lifestyle, history and culture of the Amish community. After the house tour, walk freely through our sprawling 12-acre Village which includes a barn filled with friendly farm animals, one-room schoolhouse, Village Store with Amish-made crafts and souvenirs, Smokehouse Market featuring Amish-made jams, jellies and treats, blacksmith barn, pavilion for picnic lunches and handicapped accessible walkways.



30 MIN



## ANTIQUE AUTOMOBILE CLUB OF AMERICA MUSEUM

161 Museum Drive, Hershey, PA, 17033  
717-566-7100 (Main) • 717-566-7300 (Fax)  
Email: [Nuria@AACAMuseum.org](mailto:Nuria@AACAMuseum.org)  
[AACAMuseum.org](http://AACAMuseum.org)

Take a walk down memory lane, decade by decade, as you remember those cars your parents and grandparents drove, and, those from your early driving days all set in scenes and settings of a cross country journey! Special featured exhibits change several times each year so there is always something new to see. Permanent exhibits include our 1950's Drive-In, a 1940's Valentine Diner and the World's largest collection of Tucker automobiles. There's something for everyone, no matter what the age or special interests of your group. Groups can enjoy the museum on a self-guided tour or with a guided tour with advance reservations.





# ATTRACTIONS



## BALLOON RIDES DAILY BY UNITED STATES HOT AIR BALLOON TEAM

2727 Old Philadelphia Pike, Bird-in-Hand, PA, 17505  
800-763-5987

Email: [info@ushotairballoon.com](mailto:info@ushotairballoon.com)  
[ushotairballoon.com](http://ushotairballoon.com)

Come up ... slow down. A once in a lifetime experience. Relax and enjoy the exhilaration of floating effortlessly over Lancaster County's picturesque Amish farmland. Wave from aloft to earth bound spectators, and farmers working in their fields. AM/PM rides available from the Bird-in-Hand Family Restaurant. Be sure to add a balloon ride to your next visit and don't forget that Balloon Rides Daily can work with groups and corporate events, too! Call for flight reservations and rates. MC, Visa, AMEX, and Discover accepted.



## CARLISLE SPORTS EMPORIUM

29 S. Middlesex Road, Carlisle, PA, 17015  
717-258-4741 (Main) • 717-258-8858 (Fax)  
Email: [sales@carlisesportsemporium.com](mailto:sales@carlisesportsemporium.com)  
[carlisesportsemporium.com](http://carlisesportsemporium.com)

Carlisle Sports Emporium is Central Pennsylvania's year-round indoor and outdoor mega entertainment complex with over 75,000 sq. ft. of indoor and acres of outdoor fun! Known as "The Place to Play," we are the perfect destination for all ages and every occasion. Our interactive fun features indoor and outdoor go-kart tracks, two 18-hole Castle and Western themed miniature golf courses, a brand new 7500 sq. ft. 2-tier LASERTRON laser tag arena, a roller skating rink, Victory Lane Café, and the largest arcade in the area with an indoor rock climbing wall! We provide multiple venues for hosting business meetings or group events. Due to this broad array of exciting activities and many meeting spaces, we specialize in parties, go-kart track rentals, and group outings of any size. Not to mention we love hosting bus and tour groups! If you're looking for things to do in the area, Carlisle Sports Emporium is the place to go! Better yet, the Carlisle Sports Emporium is easily accessible from all the major highways of south Central Pennsylvania. We're located just off Interstate 81 and the Pennsylvania Turnpike, making us just minutes away from Camp Hill, Harrisburg, Hershey, York, Gettysburg and Lancaster.



# ATTRACTIONS



## FULTON THEATRE

12 North Prince Street, Lancaster, PA 17603  
717-394-7133 (Main) • 888-480-1265  
717-397-3780 (Fax)  
Email: [groups@thefulton.org](mailto:groups@thefulton.org)  
[thefulton.org](http://thefulton.org)

Broadway-caliber musicals and plays experienced within the grandeur of a beautifully restored 160 year old national historic landmark of ornate Victorian architecture, within walking distance of downtown Lancaster's array of shops, farmers markets, lodging, galleries, restaurants and night life, one block west of Penn Square and Lancaster County Convention Center.

### 2016–2017 Season

#### MAINSTAGE

|                        |                     |
|------------------------|---------------------|
| Ghost                  | 04/19/16 – 05/14/16 |
| Footloose              | 06/07/16 – 07/17/16 |
| Billy Elliot           | 09/20/16 – 10/16/16 |
| Beauty and the Beast   | 11/08/16 – 12/31/16 |
| Annie Get Your Gun     | 01/24/17 – 02/19/17 |
| In the Heights         | 03/14/17 – 04/02/17 |
| Always ... Patsy Cline | 04/18/17 – 05/21/17 |
| Newsies                | 06/06/17 – 07/23/17 |

#### GROFF STUDIO SERIES

##### 99-seat Black Box — Intimate, Experiential

|                 |                     |
|-----------------|---------------------|
| Veronica's Room | 10/11/16 – 10/30/16 |
| Disgraced       | 02/21/17 – 03/12/17 |
| 4000 Days       | 05/16/17 – 06/04/17 |



## GAMUT THEATRE GROUP

15 North Fourth Street, Harrisburg, PA, 17101  
717-238-4111 (Main)  
[info@gamuttheatre.org](mailto:info@gamuttheatre.org)  
[GamutTheatre.org](http://GamutTheatre.org)

Gamut Theatre Group is the combined home of Popcorn Hat Players Children's Theatre and Harrisburg Shakespeare Company. Our mission is to tell classic stories in new, exciting ways for the entertainment and enlightenment of children and adults alike.

We are devoted to making theatre accessible and engaging for all of Central PA and beyond. In addition to full seasonal offerings of both PHP and HSC, Gamut also produces professional-quality, donated performances through our Stage Door Series, whose motto is "Come as you are; Pay what you will." We also offer extensive and rigorous theatre education for youth throughout the year.

### 2016–2017 Season

PHP PRESENTS RUMPELSTILTSKIN: April 13–30, 2016  
PHP PRESENTS ROBIN HOOD: May 11–26, 2016  
FREE SHAKESPEARE IN THE PARK:  
THE MERRY WIVES OF WINDSOR: June 3–18, 2016  
PHP PRESENTS WONDER TALES FROM AROUND THE WORLD: June 8–18, 2016  
PHP PRESENTS CINDERELLA: July 13–August 20, 2016  
PHP PRESENTS RAPUNZEL: September 14–24, 2016  
PHP PRESENTS SLEEPY HOLLOW: October 12–29, 2016  
DEATH OF A SALESMAN: November 5–27, 2016  
PHP PRESENTS A CHRISTMAS CAROL: November 30–December 17  
PHP PRESENTS PINOCCHIO: January 11–28, 2017  
PHP PRESENTS SNOW QUEEN: March 8–25, 2017  
R.U.R. - February 11–26, 2017  
PHP PRESENTS BREMETOWN MUSICIANS: April 19–May 11, 2017  
ROMEO AND JULIET: EDUCATION OUTREACH PUBLIC PERFORMANCES: March 19, 24, 25 and 26, 2017  
FREE SHAKESPEARE IN THE PARK:  
MACBETH: June 2–17, 2017



# ATTRACTIONS



## GETTYSBURG NATIONAL MILITARY PARK MUSEUM AND VISITOR CENTER

1195 Baltimore Pike, Gettysburg, PA, 17325  
877-874-2478

Email: [reservations@gettysburgfoundation.org](mailto:reservations@gettysburgfoundation.org)  
[gettysburgfoundation.org](http://gettysburgfoundation.org)

National Park Service Visitor Center. The ideal first stop on your Group's visit to Gettysburg. Designated Group entrance. Curbside drop-off and pick-up. Ample restrooms. Picnic area. Bus drivers and tour leaders receive free entrance to the Film, Cyclorama and Museum. Group tours led by Licensed Battlefield Guides in your own vehicle available. Group rates to the film "A New Birth of Freedom," the incredible 100+ year-old Battle of Gettysburg Cyclorama painting, and 11 gallery Museum with remarkable artifacts. Group rates to Eisenhower National Historic Site and the historic David Wills House. Spacious Refreshment Saloon boasts hot and cold meals, snacks and gourmet boxed lunches. Extensive gift and book items in spacious Museum Book Store.



## GIANT CENTER

550 W. Hersheypark Drive, Hershey, PA, 17033  
717-534-3911 (Main) • 800-745-3000

Email: [info@hersheypa.com](mailto:info@hersheypa.com)  
[hersheyentertainment.com](http://hersheyentertainment.com)

GIANT Center is home to Hershey Bears ice hockey team. In addition, it also hosts a sensational lineup of star-studded performances including professional ice shows, family events, concerts, and special attractions. Many shows offer discounts for groups of 15 or more.



# ATTRACTIONS



## HARRISBURG MALL

3501 Paxton Street, Harrisburg, PA 17111  
717-564-0980 (Main) • 717-564-4935 (Fax)  
Email: [sclippinger@sjpi.com](mailto:sclippinger@sjpi.com)  
[shopharrisburgmall.com](http://shopharrisburgmall.com)

Harrisburg Mall is a fully enclosed, two-level, regional shopping center located conveniently at the intersection of I-83 and Paxton Street and just 3 miles from Harrisburg's central business district, 6 miles from Harrisburg International Airport and 4 miles from the PA Turnpike. With over one-million square feet of space, the Harrisburg Mall offers a food court, an onsite Applebees, Regal Cinemas movie theatre, children's play area and an ample supply of private or public meeting space as well as parking.



## HERSHEY GARDENS

170 Hotel Road, Hershey, PA, 17033  
(717) 534-3492 (Main)  
Email: [info@hersheygardens.org](mailto:info@hersheygardens.org)  
[hersheygardens.org](http://hersheygardens.org)

- New for summer 2016, the Milton & Catherine Hershey Conservatory will feature a year-round indoor Butterfly Atrium, with 500 - 600 tropical and North American butterflies as well as an Educational & Horticultural Wing hosting changing horticultural displays.
- The 23 acre botanical garden is filled with magnificent theme gardens, colorful seasonal displays and the historic rose garden that boasts over 3,500 rose bushes.
- The Children's Garden has 30 playful theme gardens, each filled with colorful plant life and educational displays — providing hours of fun for the whole family!
- The Gardens Shop offers a wide variety of distinctive home and garden items, as well as fun, educational items for the kids.
- Guided tours are available, as well as self-guided tours.
- **Comp Policy:** Receive one complimentary ticket for every 20 paid admissions.



60-90  
MIN



# ATTRACTIONS



## HERSHEYPARK®

100 West Hersheypark Drive, Hershey, PA 17033  
800-HERSHEY (437-7439) (Main)  
Email: [HersheyparkGroups@HersheyPA.com](mailto:HersheyparkGroups@HersheyPA.com)  
[HersheyparkGroups.com](http://HersheyparkGroups.com)

*Hersheypark®* delights guests with more than 70 rides and attractions including 13 roller coasters, live entertainment and water fun for everyone! The Boardwalk, our family water park, features 14 attractions! THREE attractions for one low price: *Hersheypark*, The Boardwalk at *Hersheypark*, and ZooAmerica®

- Up to 45% off regular admission
- FREE admission to ZooAmerica when entered from within *Hersheypark*
- FREE bus parking with FREE bus driver admission
- Access to *Hershey's Chocolate World* Attraction
- Exclusive all-you-can-eat buffets available for groups of 40 or more
- Save up to 30% with pre-purchased meal tickets (includes refillable souvenir cup)
- Performance groups/in-park performance opportunities at *Take the Stage at Hersheypark*

4 HRS



## HERSHEY'S® CHOCOLATE WORLD® ATTRACTION

251 Park Boulevard, Hershey, PA, 17033  
717-520-8981 (Main) • 717-520-8859 (Fax)  
Email: [groupsales@hersheys.com](mailto:groupsales@hersheys.com)  
[hersheys.com/chocolateworld](http://hersheys.com/chocolateworld)

Get your first taste of Hershey at HERSHEY'S CHOCOLATE WORLD Attraction! Your adventure begins on our reimagined and FREE Hershey's Chocolate Tour, complete with a FREE sample. No reservations required. Then, design and enjoy your own chocolate creation at Create Your Own Candy Bar. Immerse yourself in the flavorful world of chocolate in our Chocolate Tasting Experience and see the Hershey's Product Characters come to life as you help them solve the factory mystery in the 4D Chocolate Mystery.

- **Comp Policy:** Receive one (1) complimentary ticket for every 20 paid admissions (on attractions only)

30 MIN



# ATTRACTIONS



## THE HERSHEY STORY, THE MUSEUM ON CHOCOLATE AVENUE

63 West Chocolate Avenue, Hershey, PA 17033  
 717-534-8939 (Main) • 717-534-8940 (Fax)  
 Email: [grouptours@HersheyStory.org](mailto:grouptours@HersheyStory.org)  
[hersheystory.org](http://hersheystory.org)

- Located under the iconic Hershey's Kisses streetlights in the heart of ChocolateTown, The Hershey Story Museum provides a distinctive atmosphere and a unique location to host your next social gathering, corporate event, or party.
- Designed to accommodate groups of up to 240 people, The Hershey Story offers an extensive selection of menu choices, perfect for an intimate event — or a large gathering.
- Add a private tour of the Museum Experience, a delicious class in the Chocolate Lab or a flight of warm drinking chocolates from Tastings to enhance your guests' experience!
- **Comp Policy:** Receive one complimentary ticket for every 20 paid admissions.

30 MIN



## HOLLYWOOD CASINO AT PENN NATIONAL RACE COURSE

777 Hollywood Boulevard, Grantville PA 17028  
 717-469-2211 (Main)  
 Email: [club.hollywood@pngaming.com](mailto:club.hollywood@pngaming.com)  
[hcpn.com](http://hcpn.com)

A red carpet experience awaits your group when you visit Central Pennsylvania's premier entertainment facility open 24/7 and just minutes away from Hershey and Harrisburg. Surround yourself with excitement as you take a seat at the hottest slot machines and table games around; experience the heart-pounding thrills of live thoroughbred racing; indulge in our award-winning restaurants; and dance the weekend away to nationally-acclaimed tribute acts and renowned local bands. At Hollywood Casino, it's all about providing A+ Service to every guest, every time. Come visit and see why there's truly "No Place Like Hollywood!"

GAMBLING PROBLEM?  
 CALL 1.877.565.2112 FOR HELP.



# ATTRACTIONS



## INDIAN ECHO CAVERNS

368 Middletown Rd., Hummelstown, PA, 17036  
717-566-8131 (Main) • 717-566-0875 (Fax)  
Email: [indianechocaverns@yahoo.com](mailto:indianechocaverns@yahoo.com)  
[indianechocaverns.com](http://indianechocaverns.com)

We are open all year, with different themed events for all occasions. A family adventure, something for all ages. Experience our 45 minute guided tour of the natural underground beauty. The tour reveals history, amazing geological wonders, and the Crystal Lake. Go panning for gems and treasures, and of course you can keep the "goodies." Kids love the petting barnyard and hands-on friendly animals. Private group events can be held in our spacious conference room. Pavilions for social gatherings, parties or business events. We customize our catering whether having a picnic or just to meet your specific budget or needs.

45 MIN



## JOHN HARRIS-SIMON CAMERON MANSION

219 S. Front Street, Harrisburg, PA, 17104  
717-233-3462 (Main) • 717-233-6059 (Fax)  
Email: [office@dauphincountyhistory.org](mailto:office@dauphincountyhistory.org)  
[dauphincountyhistory.org](http://dauphincountyhistory.org)

The Historical Society of Dauphin County operates the John Harris-Simon Cameron Mansion. The mansion was built c.1766 by John Harris, Jr., one of the founders of Harrisburg. In 1863, it was purchased by Simon Cameron, Lincoln's first Secretary of War. Cameron transformed the Georgian house into a stylish Victorian mansion and lived there until his death in 1889. Please call or visit the website for information on hours of operation, admission, guided tours, and mansion rentals.

1 HR





# ATTRACTIONS



## LAKE TOBIAS WILDLIFE PARK

760 Tobias Road, Halifax PA 17032  
717-362-9126 (Main) • 717-362-9993 (Fax)  
Email: [reservations@laketobias.com](mailto:reservations@laketobias.com)  
[laketobias.com](http://laketobias.com)

Experience the wild with hundreds of animals from around the world. Guided Safari Tours take you over 150 acres of rolling hills with herds of animals and flightless birds. Encounter the exotic as you stroll around the zoo exhibits where interesting creatures educate and entertain you. The Reptiles & Exotics Facility will thrill you with eye opening presentations that will enlighten you on these fascinating creatures. You can even touch an alligator if you dare! Picnic tables, concessions and souvenirs available. Come, join us for a day of wild adventure. Open May thru October. Visit our website at [laketobias.com](http://laketobias.com) and check out our Facebook page.



50 MIN



## LANCASTERHISTORY.ORG LANCASTER COUNTY'S HISTORICAL SOCIETY & PRESIDENT JAMES BUCHANAN'S WHEATLAND

230 North President Avenue, Lancaster, PA 17603  
717-392-4633 (Main)  
Email: [patrick.clarke@lanasterhistory.org](mailto:patrick.clarke@lanasterhistory.org)

Come discover the warmth and hospitality of President James Buchanan's Wheatland—residence of our 15th US President. Buchanan referred to Wheatland as his agreeable country residence about a mile and an half from Lancaster City. Explore the rooms and stairwells, the secrets and stories of the President who served just prior to the Civil War. From 1857 to 1861 Buchanan struggled to calm a nation divided over slavery, states' rights and popular sovereignty. His term ended with the secession of seven states after the election of Republican, Abraham Lincoln. Visit Wheatland today and let our tour guides in period dress bring this powerful time in history to life.



50-55  
MIN

# ATTRACTIONS



## LEBANON VALLEY EXPOSITION CENTER & FAIRGROUNDS

80 Rocherty Road, Lebanon, PA 17042  
717-273-3670 (Main)  
Email: [pkewin@lebexpo.org](mailto:pkewin@lebexpo.org)  
[lebexpo.org](http://lebexpo.org)

Nestled in the valley of south central Pennsylvania is an affordable option for your meeting or trade show needs. Conveniently located near major highways, restaurants, and local attractions, the Lebanon Valley Expo Center offers you the space you need with the appeal of small town living. Our 75,000 square feet of exhibition space under 8 connected venues give you the option of one large event, with the flexibility for break out space if required by your group. If your requirements would be better suited for outdoor space, we offer 27,500 sq. ft. barn and adjoining area space. Need a dirt track for your event? We offer that too with our 1/2 mile oval track.

North Hall is the largest open facility on the grounds with high ceilings in a well-lit, welcoming space. The hall features overhead lighting, air conditioning, heat, available drop-down overhead electrical hook-ups, and multiple overhead door and man door access points.

- Square Footage: 15,000 sq. ft. of open space
- Dimensions: 100' x 150'

West Hall features overhead lighting as well as spot/down lights along the North and South walls, air conditioning, heat, available drop-down overhead electrical hook-ups, and multiple overhead door and man door access points.

- Square Footage: 12,900 sq. ft. of open space
- Dimensions: 230' x 58'
- Attractively Priced
- Easily Accessed
- Clean
- Courteous Staff
- Nearby Tourist Attractions
- Onsite RV Parking



## THE NATIONAL CIVIL WAR MUSEUM

1 Lincoln Circle, at Reservoir Park  
Harrisburg, PA, 17103  
717-260-1861 (Main) • 866-BLU-GRAY  
717-260-9599 (Fax)  
Email: [info@nationalcivilwarmuseum.org](mailto:info@nationalcivilwarmuseum.org)  
[nationalcivilwarmuseum.org](http://nationalcivilwarmuseum.org)

Come face to face with history at The National Civil War Museum! With extraordinary displays, this museum covers the entire American Civil War from beginning to end. We bring history to life with outstanding collections of Union and Confederate artifacts, high definition videos, and life-size mannequins. The self-guided tour includes seventeen galleries of inspiring, balanced presentations. A panoramic view of Harrisburg and magnificent Grand Rotunda add to the unique ambiance of this inspirational setting; exceptional banquet facilities make this the perfect venue for an exclusive private affair. With advance reservations, parties of ten or more are welcome at discounted group rates. Our Education Department is dedicated to making student field trips an exceptional learning experience.



# ATTRACTIONS



## NATIONAL CHRISTMAS CENTER FAMILY ATTRACTION & MUSEUM

3427 Lincoln Highway East (Rt. 30),  
Paradise, PA, 17562  
717-442-7950 (Main)

Email: [info@nationalchristmascenter.com](mailto:info@nationalchristmascenter.com)  
[nationalchristmascenter.com](http://nationalchristmascenter.com)

Enjoy the magic, memories, history and traditions of Christmas throughout the year!

**WE ARE MORE THAN YOU EXPECT!**

National Christmas Center is a one-of-a-kind family attraction and museum. Visitors set their own pace on this self-guided indoor tour of 20,000 square feet of Christmas memories. Fifteen main galleries and numerous, ever-changing smaller exhibits bring the holiday to life for guests of all ages.

Exhibits:

- Window-shop in a recreation of a 1950's Woolworth's 5&10
- Explore Toyland Train Mountain, nestled under the branches of a giant Christmas tree
- Return to your childhood as you step into the pages of a fairytale, walking the cobblestone streets of TudorTowne animated storybook village
- Enjoy the delightful animated figures in Santa's North Pole Workshop
- Step back in time and follow a life-sized Nativity Walk

And so much more ...



## NED SMITH CENTER FOR NATURE & ART

176 Water Company Road, Millersburg, PA, 17061  
717-692-3699 (Main) • 717-692-0977 (Fax)

Email: [info@nedsmithcenter.org](mailto:info@nedsmithcenter.org)  
[nedsmithcenter.org](http://nedsmithcenter.org)

Located just outside picturesque Millersburg, the Ned Smith Center for Nature and Art is dedicated to connecting people with nature and the arts. With twelve miles of hiking trails, art gallery, gift shop, and unique special events; the Ned Smith Center is your destination for family fun ... just 30 miles north of Harrisburg.





# ATTRACTIONS



## OPEN STAGE OF HARRISBURG

223 Walnut St., Harrisburg, PA, 17101  
717-232-6736 (Main)  
Email: [info@openstagehbg.com](mailto:info@openstagehbg.com)  
[openstagehbg.com](http://openstagehbg.com)

Open Stage of Harrisburg welcomes groups of 10 to 120. Group rates are available for all of our productions.



## PENNSYLVANIA FARM SHOW COMPLEX & EXPO CENTER

2300 North Cameron Street • Harrisburg, PA 17110  
717-787-5373 (Main) • 717-783-8710 (Fax)  
[farmshowcomplex.state.pa.us](http://farmshowcomplex.state.pa.us)

The PA Farm Show Complex & Expo Center hosts a variety of Group Friendly events annually.

- Free friendly designated coach loading and unloading area
- Events with group-friendly rates and driver facilities
- Easy access to several major interstates
- Located just 15 minutes from Hershey PA
- Banquet facilities for groups of up to 1200
- Group friendly hotels located less than one mile from the Complex

Here is a sampling of our group friendly events:

- PA Farm Show
- PA Auto Show
- Great American Outdoor Show
- Keystone International Livestock Show
- All American Dairy Show
- PA Christmas Craft & Gift Show
- PA National Horse Show
- Mecum Auto Auction
- Horse World Expo
- Lego® KidsFest
- PA Flavor Fest
- PA Relief Sale
- PA Home Builders Show

For a complete list of events visit:  
<http://pafarmshowcomplex.pa.gov/events>

# ATTRACTIONS



## PRIDE OF THE SUSQUEHANNA RIVERBOAT

1 Riverside Drive, Harrisburg, PA 17101  
717-234-6500 (Main) • 717-234-9902 (Fax)  
harrisburgriverboat.com

Come ride one of the last remaining paddle wheel driven riverboats on the continent! The Pride offers tourists great views of the river as well as the majestic Pennsylvania state capitol. We run tours daily in the summer, and special events like live music and dinner cruises occur most nights.

- Full bar
- Galley kitchen
- Restrooms
- Climate controlled interior
- Handicap accessible

45 MIN



## ROUNDTOP MOUNTAIN RESORT

925 Roundtop Road, Lewisberry PA 17339  
717-432-9631 (Main) • 717-432-2949 (Fax)  
Email: skiroundtop@skiroundtop.com  
roundtopmountainresort.com

Is your tour group looking for out-of-the-ordinary? We challenge you to try our zip lines, paintball fields, huge maze, or roll down the hill inside our OGO ball.

Require space indoors or outdoors for groups ranging from 10–700? We have it! Catering options from picnics to extravagant formal affairs? We'll do it!

**Year round:** Professionally facilitated team-building for sports teams, student and corporate groups with positive, guaranteed results at the ropes course, and themed Paintball fields for friendly challenges.

**Memorial Day to Labor Day:** Zip line canopy tour, and our outdoor adventure park. We offer bumper boats, giant maze, climbing features, zip lines and more in one convenient package.

**During the winter:** Skiing, snowboarding, and tubing are open. 100% snowmaking means that even if your backyard is brown, we have plenty of snow.



# ATTRACTIONS



## SIGHT & SOUND THEATRES®

300 Hartman Bridge Road, Strasburg, PA, 17579  
800-377-1277 • 877-662-4849 (Fax)  
Email: [customerservice@sight-sound.com](mailto:customerservice@sight-sound.com)  
[sight-sound.com](http://sight-sound.com)

Go beyond entertainment with Sight & Sound Theatres. Every show is an epic experience with a meaningful message. Edge-of-your-seat action meets heartfelt drama on a panoramic stage. Surround yourself with uplifting Bible stories brought to life in jaw dropping scale by a world class cast, spectacular special effects and live animals — on stage and in the aisles!

**Samson:** March 12–December 31, 2016

**Jonah:** March 11–December 30, 2017.

*Show times vary.*

- **Comp Policy:** One ticket for every 24 booked



2 HRS  
20 MIN



## THE SPA AT THE HOTEL HERSHEY®

100 Hotel Road, Hershey, PA, 17033  
717-520-5888 (Main)  
[chocolatespa.com](http://chocolatespa.com)

*The Spa At The Hotel Hershey®* is the perfect place to relax and indulge with family, friends, colleagues, or special corporate guests. Choose from a decadent variety of traditional massages, hydrotherapy, facials, and one-of-a-kind treatments like our patented *Whipped Cocoa Bath™*. In addition to a choice of treatments to suit your group, The Spa also offers salon services, The Oasis (a spa guest-only restaurant), and complimentary fitness services. A variety of lounge areas are available for both those who enjoy quiet solitude and those who favor more of a social spa experience.





# ATTRACTIONS



## SPOOKY NOOK SPORTS

75 Champ Boulevard, Manheim, PA, 17545  
717-945-7087 (Main)  
Email: [events@nooksports.com](mailto:events@nooksports.com)  
[spookynooksports.com](http://spookynooksports.com)

Spooky Nook is a venue as unique as you are! With the Warehouse Hotel located on-site, The Nook will be the best choice whether you're traveling for business or pleasure. From the turf to the boardrooms, Spooky Nook is prepared to create your event experience unlike any other. The Nook is located off Route 283, just minutes from Lancaster and Hershey. Our 700,000 square foot building can accommodate any event from intimate cocktail parties or business meetings to large scale conventions or tournaments. Our friendly, professional staff is dedicated to making a positive impact on the lives of all our guests by delivering exceptional customer service. Spooky Nook offers full catering on-site with our executive chef and kitchen staff, on-site accommodations at the Warehouse Hotel, wifi, air-walls to create flexible spaces, audio visual equipment, standard linens, and basic china. Courts and turf space for organized team and corporate group activities.

20-30  
MIN



## THE STATE MUSEUM OF PENNSYLVANIA

300 North St., Harrisburg, PA, 17120  
717-787-4980 (Main) • 717-783-4558 (Fax)  
Email: [dwynkoop@pa.gov](mailto:dwynkoop@pa.gov)  
[statemuseumpa.org](http://statemuseumpa.org)

The State Museum of Pennsylvania in Harrisburg, the official museum of the Commonwealth, is a great place for exploration, fun, and discovery. On a trip to the museum, encounter a giant chick, meet a family of Coelophysis dinosaurs, or bump into a huge mastodon. Hike among the bear, porcupine, elk, deer, and other creatures of Mammal Hall. Uncover salamanders and snakes; spot eagles and woodpeckers. Gaze upon the stars in the museum's Planetarium sky. Follow Pennsylvania's Native Americans throughout time. March into the Civil War era and see remnants of its greatest battle. Cruise past our antique cars or buzz around our planes. Feed your passion for art ... It's All About Pennsylvania! Group rates available call 717-772-6997



Self-Guided Tour:  
2 hour minimum to  
view entire museum

# ATTRACTIONS



## TANGER OUTLETS HERSHEY

46 Outlet Square, Hershey, PA, 17033  
717-520-1236 (Main)  
[tangeroutlet.com/hershey](http://tangeroutlet.com/hershey)

Located just off Hersheypark Drive, indulge your shopping appetite at over 60 stores including:

- Polo Ralph Lauren
- Under Armour
- Coach
- Banana Republic
- Gap Outlet

Shop Outlets. Shop Tanger.



## TURKEY HILL EXPERIENCE

301 Linden St., Columbia, PA, 17512  
844-847-4884 (Main) • 717-684-5197 (Fax)  
Email: [groupsales@turkeyhill.com](mailto:groupsales@turkeyhill.com)  
[turkeyhillexperience.com](http://turkeyhillexperience.com)

Just minutes from the Hershey area, Turkey Hill Experience features interactive exhibits that allow you to learn about dairy culture, the story of Turkey Hill Dairy and how the company's ice cream and iced tea flavors are selected and created. Experience what it's like to be a Turkey Hill Dairy ice cream maker for a day. In addition, you can sit in our vintage milk truck, milk our mechanical cows, star in your very own Turkey Hill commercial and enjoy unlimited free samples of select iced tea and ice cream products! Bring your virtual ice cream creation to life in the Turkey Hill Taste Lab: a hands-on, educational experience. Seating is limited in the Taste Lab, reservations are required and an additional fee applies. The Experience is group friendly, offering special pricing for groups of 20 or more. For more information on group sales, contact [groupsales@turkeyhill.com](mailto:groupsales@turkeyhill.com) or visit our website. Offering flexible hours, we will gladly open early or stay late as needed, with advance notice.

60-150  
MIN



# ATTRACTIONS



## US ARMY HERITAGE & EDUCATION CENTER

950 Soldiers Drive, Carlisle, PA, 17013

717-245-3972 (Main) • 717-245-3067 (Fax)

Email: [usarmy.carlisle.awc.mbx.ahec-ves@mail.mil](mailto:usarmy.carlisle.awc.mbx.ahec-ves@mail.mil)  
[USAHEC.org](http://USAHEC.org)

The USAHEC is the premier research and archival facility for U.S. Army history and is dedicated to "Telling the Army story ... one Soldier at a time." The expansive campus includes the Visitor and Education Center, the U.S. Army War College Library, the U.S. Army Military History Institute, and the Army Heritage Trail. The Visitor and Education Center features the Soldier Experience Interactive Gallery, special changing exhibits, the museum store, a café, and rentable multi-purpose rooms available for events. Ridgway Hall features the library and archives, an art gallery with exhibitions rotating annually, and additional changing exhibit spaces. The mile-long, outdoor Army Heritage Trail provides an immersive experience, which allows visitors to walk into different periods of history represented. Displays include a scale reproduction of Redoubt Number 10 from the Revolutionary War, a World War I trench system, a Vietnam Fire Support Base, as well as other objects and structures from across the span of Army History.



## WHITAKER CENTER FOR SCIENCE AND THE ARTS

222 Market Street, Harrisburg, PA, 17101

717-214-ARTS (2787) (Main) • 717-221-8208 (Fax)

Email: [info@whitakercenter.org](mailto:info@whitakercenter.org)  
[whitakercenter.org](http://whitakercenter.org)

Whitaker Center for Science and the Arts is the mid-state's premier center for arts, education, entertainment, and cultural enrichment. Whitaker Center is composed of three main venues — Harsco Science Center, Select Medical Digital Cinema and Sunoco Performance Theater. Dive into science with three floors of interactive, hands-on exhibits. Take in a documentary or Hollywood blockbuster on a four story screen with immersive sound. Experience the intimacy and impact of a live concert, theater, or dance performance. Whitaker Center is attached to the Hilton Harrisburg which provides first-class lodging and dining. Also attached is the Strawberry Square retail, food court, and office complex providing a number of options for groups.

Group rates and private events are available! Call our Group Sales Coordinator to plan your group's trip today!





# ATTRACTIONS



## **ZOOAMERICA® NORTH AMERICAN WILDLIFE PARK**

201 Park Avenue, Hershey, PA, 17033  
717-534-3900 (Main) • 800-HERSHEY (437-7439)  
717-534-3151 (Fax)  
Email: [ZooAmerica@HersheyPA.com](mailto:ZooAmerica@HersheyPA.com)  
[zooamerica.com](http://zooamerica.com)

Visit *ZooAmerica*, a year-round, 11-acre, walk-thru zoo adjacent to *Hersheypark* in Hershey, PA. Stroll the tree-lined pathways as you learn about more than 200 animals from five regions of North America.

Whether you come to *ZooAmerica* or *ZooAmerica* comes to you, we have a wide range of educational opportunities for groups, including: onsite programs, guided tours, animal encounters, outreach programs, seasonal activities and more.

1 HR



# LODGING



## **BEST WESTERN PREMIER THE CENTRAL HOTEL HARRISBURG/HERSHEY**

800 East Park Drive, Harrisburg PA 17111  
717-561-1143 (Main) • 717-564-2347 (Fax)  
Email: [Kristine.Gulick@theCentralHotelHarrisburg.com](mailto:Kristine.Gulick@theCentralHotelHarrisburg.com)  
[thecentralhotelharrisburg.com](http://thecentralhotelharrisburg.com)

The Central Hotel offers exceptional facilities including 17,000 square feet of flexible meeting space — Perfect for a private dinner or hospitality after traveling all day! 174 guest rooms and spacious suites with floor plan options and amenities to accommodate your group traveler needs. Other features include a large heated pool, fitness center and arcade. O'Reilly's offers a welcoming atmosphere featuring fresh comfort foods and Irish specialties. We welcome groups of all kinds.

- Guest Rooms: 174
- Comp Policy: 1 per 20 paid per night.  
Driver/Tour Guide



# LODGING



## CANDLEWOOD SUITES HARRISBURG

504 N. Mountain Road, Harrisburg, PA 17112  
 717-652-7800 (Main) • 717-652-1800 (Fax)  
 Email: [Vanessa.Castro@Dellisart.com](mailto:Vanessa.Castro@Dellisart.com)  
[CandlewoodSuites.com/HarrisburgPA](http://CandlewoodSuites.com/HarrisburgPA)

The Candlewood Suites® Harrisburg hotel offers the utmost in comfort and exceptional service for your tour group. Each suite offers free high-speed Internet access and a spacious work area, so you can have a productive stay while at the Candlewood Suites. When it comes to Harrisburg, PA hotels, our amenities and service are unmatched. As a guest, you'll enjoy a 24-hour Fitness Center, complimentary guest laundry facilities, a DVD/CD lending library, and a relaxing Indoor Pool & Hot Tub. If you're in need of a quick bite to eat or forgot something, the Candlewood Cupboard features value-priced frozen meals, snacks, drinks and sundries.

- Guest Rooms: 93



## CANDLEWOOD SUITES HARRISBURG HERSHEY

413 Port View Drive, Harrisburg PA 17111  
 717-561-9400 (Main) • 877-834-3613  
 717-561-9401 (Fax)  
 Email: [courtney@areyamanagement.com](mailto:courtney@areyamanagement.com)  
[candlewoodsuites.com/hersheypa](http://candlewoodsuites.com/hersheypa)

This beautiful Candlewood Suites Harrisburg Hershey is conveniently located in the Techport Business Park right off of I-83 and I-283, by Bass Pro Shop. Only 3 miles from downtown Harrisburg, 10 miles from Hershey, and 7 miles from Harrisburg International Airport, our Candlewood Suites Harrisburg Hershey is the perfect location for all your business and personal needs. We feature a two-story indoor pool and jacuzzi, state-of-the-art fitness center, free guest laundry facility, 24-hour business center, free WIFI throughout the hotel, and full kitchenettes in every room! Come stay at the Candlewood Suites Harrisburg Hershey where we'll make you feel at home!

### Closest Attractions

- Hersheypark
- Hershey Gardens
- PA Farm Show Complex
- National Civil War Museum

- Guest Rooms: 71
- Comp Policy: 1 room per 10 booked. Discount for Driver and Tour Guide.



# LODGING



## CLARION INN AND SUITES HARRISBURG

150 Nationwide Drive, Harrisburg, PA, 17110  
717-545-9089 (Main) • 717-545-7926 (Fax)  
Email: [Clarioninn156@gmail.com](mailto:Clarioninn156@gmail.com)  
[choicehotels.com/pa156](http://choicehotels.com/pa156)

The Clarion Inn & Suites® hotel provides warm and inviting accommodations close to *Hersheypark*. The Pennsylvania Farm Show Complex & Expo Center is five minutes from this Harrisburg, PA hotel. We are minutes from popular attractions including:

- National Civil War Museum
  - Gettysburg Battlefield
  - Hollywood Casino at Penn National Race Course
  - Lancaster's Amish Country
- 
- Guest Rooms: 107 — King 38, Double Queen 54, Suite 15
  - Comp Policy: Varies on group



## COMFORT INN RIVERFRONT

525 S. Front Street, Harrisburg PA 17104  
717-233-1611 (Main) • 717-238-2172 (Fax)  
Email: [salespa@wankawala.com](mailto:salespa@wankawala.com)  
[comfortinnriverfront.com](http://comfortinnriverfront.com)

Located in the heart of the Hershey Harrisburg Region on the Susquehanna River, we are only 10 minutes away from Hershey, 30 minutes from Gettysburg and Lancaster. The hotel is within walking distance to Harrisburg's Restaurant Row, the State Capitol Complex, Strawberry Square, Whitaker Center, and City Island Park and the Harrisburg Senators. We offer a free hot breakfast buffet each morning, a seasonal outdoor pool, fitness center, on-site restaurant, free parking, and free high-speed internet. The Comfort Inn Riverfront is ideally located to all the major highways: I-83, I-81, PA Turnpike (I-76), and Routes 11/15 and 322.

- Guest Rooms: 115
- Comp Policy: 1 per 15. Driver/Tour Guide



# LODGING



## COMFORT SUITES HUMMELSTOWN-HERSHEY

320 Milroy Road, Hummelstown, PA, 17036  
717-566-3000 (Main) • 717-566-3700 (Fax)  
Email: [jlupoli@padutchhotels.com](mailto:jlupoli@padutchhotels.com)  
[cshershey.com](http://cshershey.com)

At our Comfort Suites® hotel, you'll find everything you need to create your perfect stay. Our large contemporary suites have plenty of space for you to spread out and prepare for the next day. Each suite features microwaves, refrigerators, coffee makers, hair dryers, work desks, flat-screen TVs, pillow-top mattresses, irons with ironing boards and sofa sleepers. Keep your electronic devices charged with the recharge device including AC and USB outlets provided in all guest rooms.

- Guest Rooms: 80
- Comp Policy: 1/20 rooms booked



## COUNTRY INN & SUITES AT UNION DEPOSIT ROAD

1025 Peiffers Lane, Harrisburg PA 17109  
717-558-9200 (Main) • 717-558-9493 (Fax)  
Email: [Joelle.Bailey@Dellisart.com](mailto:Joelle.Bailey@Dellisart.com)  
[countryinns.com/harrisburgpa\\_udrd](http://countryinns.com/harrisburgpa_udrd)

The Country Inn & Suites is located just 15 minutes from Hershey, and offers a heated indoor swimming pool and spa, fitness center, wireless/wired internet access and deluxe continental breakfast. Each room has a mini-fridge, microwave, hair dryer, iron with ironing board and 40" HD flat screen TV with cable and HBO.

- Guest Rooms: 78





# LODGING



## CROWNE PLAZA HARRISBURG/HERSHEY HOTEL

23 South Second Street, Harrisburg, PA, 17101  
717-920-1796 (Main) • 717-234-6797 (Fax)  
Email: [shelby.p@cpharrisburg.com](mailto:shelby.p@cpharrisburg.com)  
[cpharrisburg.com](http://cpharrisburg.com)

Crowne Plaza Harrisburg is located in the heart of downtown Harrisburg and Restaurant Row. We are minutes from the State Capitol Complex. The hotel is easily accessible from Interstates 81 and 83 as well as the Pennsylvania Turnpike (I-76). The hotel is an ideal venue for group tours. Crowne Plaza — The Place to Meet!

- Guest Rooms: 261
- WiFi: Complimentary



## DAYS INN HARRISBURG NORTH

3919 N. Front Street, Harrisburg, PA. 17110  
717-233-3100 (Main) • 800-329-7466  
717-233-6415 (Fax)  
Email: [gm@daysinnharrisburg.com](mailto:gm@daysinnharrisburg.com)  
[daysinnharrisburg.com](http://daysinnharrisburg.com)

The award-winning Days Inn Harrisburg North is convenient to both I-83 and I-81 Exit 66, three miles to downtown Harrisburg and the Pennsylvania Capitol Complex, two miles to the PA Farm Show Complex & Expo Center, and 15 miles to Hersheypark®. Our central location allows guests to visit Harrisburg, Hershey, Carlisle, Lancaster, Gettysburg and York in one trip. Each guest room is furnished with a mini refrigerator and microwave. Guest laundry facilities, business center, 24-hour fitness center, and seasonal outdoor lifeguarded pool will further enhance your stay. Enjoy complimentary hot breakfast buffet, complete with make it yourself Belgian waffles and all day coffee service.

- Guest Rooms: 115 — King 23, Double 74, Suite 18



# LODGING



## DAYS INN HERSHEY

350 W. Chocolate Ave., Hershey, PA, 17033  
717 534-2162 x109 (Main) • (717) 533-6409 (Fax)  
Email: llovenstein@hhlhotels.com  
daysinnhershey.com

The award-winning Days Inn Hershey is conveniently located in downtown Hershey; the closest property to Hershey's great attractions. We offer comfortable non-smoking accommodations with one king or two queen beds complete with an in-room safe, refrigerator and microwave. Rates include a deluxe continental breakfast featuring Belgian waffles, hot and cold cereals, yogurt, fresh whole fruit, breakfast breads, fruit juices, and 24-hour coffee station. Additionally, we have an indoor pool with whirlpool, fitness center, game room, business center, and wireless internet throughout the property. Brand new is a delightful front porch overlooking Chocolate Avenue. Hershey is well-known for its amusement park and thrill-seeking adventures, but is also a great place to visit throughout the year! We offer our tour groups a complimentary room for the bus driver, an additional room at half price with a minimum of 20 rooms, chocolate gifts for your driver and escort, optional luggage handling, and convenient bus parking at no charge. We look forward to your visit with us — let us know how we can assist in making it a memorable trip!



## FAIRFIELD INN & SUITES HARRISBURG/HERSHEY

1018 Briarsdale Road, Harrisburg, PA, 17109  
717-412-4326 x (Main) • 800-228-2800  
717-564-6260 (Fax)  
corinne.e.flemming@marriott.com  
marriott.com/harff

The Fairfield Inn & Suites Harrisburg/Hershey is conveniently situated between Hershey and Harrisburg. Hershey is only eight miles away and minutes from downtown Harrisburg. After a long day of travel or touring the region, enjoy the comforts of home with flat panel 32" LCD TV and always FREE high speed Internet access. You can rest in our whirlpool, indoor heated pool or workout in our fitness center. Enjoy complimentary breakfast. Tour planners can receive Marriott reward event points. Our friendly staff looks forward to accommodating you! The board room is an extension to our breakfast area and is a separate meeting room that can seat 8–12 people. Please call sales office for group discount rate and availability.

- Guest Rooms: 94
- Comp Policy: 1 per 15. Driver



# LODGING



## FAIRFIELD INN & SUITES HERSHEY CHOCOLATE AVENUE

651 West Areba Avenue, Hershey, PA, 17033  
717-520-5240 x (Main) • 800-228-2800  
717-520-5241 (Fax)  
Email: [mjensen@gospringwood.com](mailto:mjensen@gospringwood.com)  
[marriott.com/HARHS](http://marriott.com/HARHS)

The Fairfield Inn & Suites by Marriott Hershey Chocolate Avenue is Hershey's newest Marriott Hotel. Our property is the proud recipient of Marriott's "New Hotel Opening of the Year" and we are excited to have you as our guest. Our knowledgeable and courteous staff is available 24-hours a day to make sure your travel is easy and productive. Take advantage of our complimentary amenities such as daily HOT breakfast, wireless internet, and more. Whether you're traveling for pleasure or business our easy to access hotel near *Hersheypark*®, numerous major employers and medical facilities, provides you with everything you'll need to get the most out of your stay. Great value and great service, all backed by a name you can believe in — Marriott!

- **Comp Policy:** Based on size and date of arrival



## HAMPTON INN AND SUITES HARRISBURG NORTH

30 Capital Drive, Harrisburg PA 17110  
717-540-0900 (Main) • 717-540-0930 (Fax)  
Email: [kirsha.damone@hilton.com](mailto:kirsha.damone@hilton.com)  
[harrisburgnorthsuites.hamptoninn.com](http://harrisburgnorthsuites.hamptoninn.com)

Welcome to the Hampton Inn and Suites Harrisburg North. Our hotel is located right off of Interstate 81 providing easy access to the Pennsylvania State Capitol, *Hersheypark* attractions, the Pennsylvania Farm Show Complex, Lancaster's Amish Country and Gettysburg Battlefields. Enjoy the comforts of home, exceptional service and attention to detail when staying with us. Relax in our indoor pool, workout in our extensive fitness center, check emails in our business center or grab a snack in our Suite Shop. Complimentary local newspapers, wifi, local calls, plenty of parking and a full breakfast buffet are part of the benefits of staying with us. Don't forget that we are part of the Hilton Honors Program too.

- **Guest Rooms:** 86
- **Comp Policy:** Based on size of group and date of arrival



# LODGING



## HAMPTON INN AND SUITES HERSHEY NEAR THE PARK

195 Hershey Road, Hummelstown, PA, 17036  
717-566-3369 (Main) • 800-426-7866  
717-566-3374 (Fax)

Email: canderson@gospringwood.com  
hersheyneartheparksuites.hamptoninn.com

The Hampton Inn & Suites Hershey Near the Park opened its doors on July 3rd, 2014. It's the first to include Hilton's brand new Forever Young Initiative featuring bright and spacious rooms and suites, well lit work areas, flat screen TVs, high-speed wireless internet and more! Each morning guests and travelers will be able to enjoy a complimentary hot American breakfast buffet or end their day with a work out in our on site fitness room or unwind in our indoor heated swimming pool. Guests can also take advantage of the numerous point redemption options from our Hilton Honors program!

- Guest Rooms: 86
- Comp Policy: Based on size and date of arrival



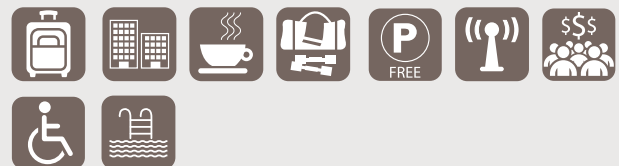
## HAMPTON INN HARRISBURG EAST

4230 Union Deposit Rd., Harrisburg, PA 17111  
717-545-9595 (Main) • 800-426-7866  
717-545-6907 (Fax)

Email: dawn.becher@hilton.com  
harrisburgeast.hamptoninn.com

At the Hampton Inn Harrisburg East groups can enjoy staying in one location while visiting Harrisburg-Hershey, Lancaster Amish Country, and Gettysburg Battlefields. With our newly renovated lobby we are sure it will feel like you are home away from home. Lie back in your clean and fresh Hampton bed and watch premium cable channels on your 32"LCD TV. You will experience a staff that is friendly and efficient who look forward to the challenge of being your #1 choice in the Harrisburg Area.

- Guest Rooms: 145
- Comp Policy: 1 per 20 paid





# LODGING



## HERSHEY LODGE

325 University Drive • Hershey, PA 17033  
717-533-3311 (Main)  
Email: [HersheyGroups@HersheyPA.com](mailto:HersheyGroups@HersheyPA.com)  
[HersheyGroups.com](http://HersheyGroups.com)

Reflecting the already warm and gracious interior of the lobby, each guest room features chocolate themed décor and artwork. Enjoy a variety of group food and beverage activities such as wine and chocolate pairings, chef demonstrations, an outstanding breakfast buffet and more!. We also invite you and your group to explore Hershey and the wonderful variety of venues and activities we offer to tour groups of all interests and sizes.

- Guest Rooms: 665
- Comp Policy: 1 per 20



## HILTON GARDEN INN HARRISBURG EAST

3943 Tecport Drive, Harrisburg, PA 17111  
717-635-7299 (Main) • 717-635-7298 (Fax)  
Email: [mdtha-salesadm@hilton.com](mailto:mdtha-salesadm@hilton.com)  
[harrisburgeast.hgi.com](http://harrisburgeast.hgi.com)

The Hilton Garden Inn Harrisburg East is centrally located to Hershey and Harrisburg attractions. All of our rooms have brand new 42" flat screen tvs and Keurig coffee machines. We are the ideal place for just a night away or multiple nights to visit the many area attractions in Hershey and Harrisburg. Please contact our Sales Department for assistance in planning your stay.

- Guest Rooms: 126
- Comp Policy: 1 comp per 40 paid room nights



# LODGING



## HILTON GARDEN INN HERSHEY

550 East Main Street, Hershey, PA, 17036  
717-566-9292 (Main) • 877-782-9444  
717-566-9934 (Fax)  
Email: mdthe-salesadm@hilton.com  
hershey.hgi.com

Welcome reception, full service dining and bar at the Garden Grille and Bar, dinner and room service. Full American breakfast at discounted group rate. Hilton Hhonor points with group booking.

- Guest Rooms: 112
- Comp Policy: One Comp per 20 Paid rooms

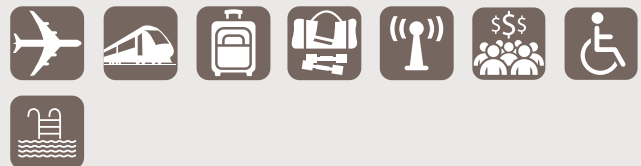


## HILTON HARRISBURG

One North Second Street, Harrisburg, PA, 17101  
717-233-6000 (Main) • 717-233-6830 (Fax)  
Email: MDTHH-SALESADM@hilton.com  
harrisburg.hilton.com

Located in historic Harrisburg, the hotel is just two blocks from the State Capitol and fifteen minutes from Hershey attractions. Plan all social and business events or unwind in a guest room, suite, or upgrade to an executive room for panoramic views of the river and skyline with access to the Executive Club, complimentary breakfast and early evening drinks. Relax in the Hilton's new casual restaurant Ad Lib Craft Kitchen & Bar with an open kitchen, wood stone oven and 16 ft. fireplace. Or heat things up in our fine dining restaurant "1700<sup>0</sup>" a true American steakhouse and most wine-friendly restaurant in Harrisburg.

- Guest Rooms: 341
- Comp Policy: 1 room per 50 rooms



# LODGING

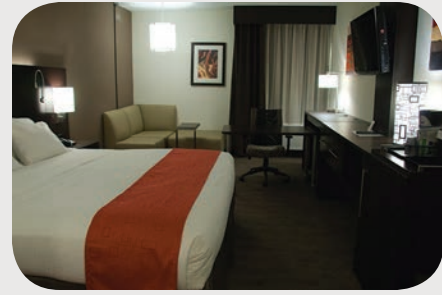


## HOLIDAY INN EXPRESS HARRISBURG EAST

4021 Union Deposit Road, Harrisburg, PA, 17109  
 717-561-8100 (Main) • 717-561-1357 (Fax)  
 Email: [mms@twintierhospitality.com](mailto:mms@twintierhospitality.com)  
[harrisburgpahotel.com](http://harrisburgpahotel.com)

Great Location — close to PA Farm Show Complex, *Hersheypark*, State Capitol, and more! COMPLIMENTARY amenities: hot breakfast buffet, 24/7 coffee, WiFi, parking, fitness center, business center, in-room refrigerator, guest laundry, seasonal outdoor pool. Friendly and knowledgeable guest service agents make groups immediately feel welcome!

- Guest Rooms: 114
- Comp Policy: Tour Guide



## HOLIDAY INN EXPRESS HARRISBURG NORTH EAST

7744 Linglestown Road, Harrisburg, PA 17112  
 Interstate 81, Exit 77  
 717-540-8400 (Main) • 717-540-5553 (Fax)  
 Email: [Charrison@padutchhotels.com](mailto:Charrison@padutchhotels.com)  
[hiexpressharrisburg.com](http://hiexpressharrisburg.com)

Stay Inspired! Honored in 2013 by Intercontinental Hotels Group with the Renovation of the Year Award, our beautiful hotel offers comfortable guest rooms with spacious work areas, microwaves, refrigerators, iron/ironing boards, hair dryers, and complimentary internet access. Amenities include an expanded business center, complimentary breakfast with rotating hot items, 24-hour fitness center, indoor pool and hot tub. Our convenient location just off exit 77 of I-81 provides easy access to the entire Hershey Harrisburg Region.

- Guest Rooms: 80
- Comp Policy: 50% off group rate. Driver/Tour Guide



# LODGING



## HOLIDAY INN EXPRESS HARRISBURG SOUTH WEST

6325 Carlisle Pike, Mechanicsburg, PA 17050  
717-790-0924 (Main) • 717-691-9385 (Fax)  
[hiexpress.com/mechanicsburg](http://hiexpress.com/mechanicsburg)

Enjoy your stay at the newly renovated, well appointed Holiday Inn Express Harrisburg South West. A perfect place to stay for business travelers and leisure guests alike, we offer a free hot breakfast buffet and free WIFI throughout the hotel.

- Guest Rooms: 109
- Comp Policy: 1 per 20 rooms booked



## HOLIDAY INN EXPRESS HERSHEY/HUMMELSTOWN

610 Walton Avenue, Hummelstown, PA 17036  
717-583-0500 (Main) • (800) HOLIDAY (465-4329)  
717-583-0564 (Fax)  
Email: [jennifer.field@hhmlp.com](mailto:jennifer.field@hhmlp.com)  
[hiexpresshersheypa.com](http://hiexpresshersheypa.com)

Family vacationers heading to the Sweetest Place on Earth will find the Holiday Inn Express Hershey the sweetest lodging option around. We're the closest hotel to world-renowned *Hersheypark*, which is home to amazing roller coasters and non-stop family fun, and within easy reach of *Hershey's Chocolate World* where the desserts of your dreams are abundant. What's more, our pet-friendly hotel serves up well-appointed guestrooms, friendly service, and a host of amenities to make your stay pleasurable and memorable.

- Guest Rooms: 78
- Comp Policy: 1 per 20 per night





# LODGING



## HOLIDAY INN MIDDLETOWN-HARRISBURG AREA

815 S. Eisenhower Blvd., Middletown, PA, 17057  
717-939-1600 (Main) • 800-719-5540  
717-985-1096 (Fax)

Email: [sherri.graham@dhotelgroup.com](mailto:sherri.graham@dhotelgroup.com)  
[holidayinn.com/middletownpa](http://holidayinn.com/middletownpa)

Looking for hotels near Hershey or Harrisburg, PA? The all new, smoke-free Holiday Inn® Middletown-Harrisburg Area hotel offers a location that is just minutes from the attractions of *Hersheypark*, downtown Harrisburg and the Amish Country. If you're looking for great hotels near Hershey, look no further. The "sweetest place on earth" is just minutes away. The PA Farm Show Complex, Giant Center and *Hersheypark* Stadium are nearby. History buffs can visit the National Civil War Museum. Don't miss terrific golf courses, antique cars and new Hershey museums. Enjoy athletic games with the Hershey Bears, Harrisburg Senators and the Stampede. In addition to a state-of-the-art boardroom and high functioning hospitality room we have a 2200 sq ft ballroom which is available with pre-function space and we offer numerous amenities such as: free high-speed WIFI internet access, full service restaurant and lounge, indoor pool and fitness area.



## THE HOTEL HERSHEY

100 Hotel Road, Hershey, PA, 17033  
717-533-2171 (Main)

Email: [TheHotelHershey@hersheypa.com](mailto:TheHotelHershey@hersheypa.com)  
[HersheyMeetings.com](http://HersheyMeetings.com)

Breath-taking elegance and uncompromising guest service make The Hotel Hershey® the perfect venue for re-focusing the creative energies that lead to successful meetings.

- 276 guest rooms including 10 Woodside Cottages featuring 48 premium guest rooms
- The Mountain Laurel Meeting Cottage, ideal for business and social occasions, is centrally located and offers full-service meeting amenities
- **The Spa At The Hotel Hershey®** — Indulge in signature chocolate-themed treatments and experience the finest in spa elegance and service. *The Spa At The Hotel Hershey* is a beautiful haven for all of our guests.
- Offering 5 unique dining options and culinary events
- The Shops At The Hotel Hershey feature an assortment of uniquely Hershey items ranging from fine jewelry to home décor, signature apparel, and delicious pastries.



# LODGING



## HOWARD JOHNSON HARRISBURG/HERSHEY

473 Eisenhower Boulevard, Harrisburg PA 17111  
717-584-6300 (Main) • 717-564-4840 (Fax)  
Email: [sales@harrisburghotels.com](mailto:sales@harrisburghotels.com)  
[harrisburghotels.com](http://harrisburghotels.com)

Hotel conveniently located to Harrisburg, Hershey, and PA Farm Show Complex. Guest rooms include coffee and coffee maker, iron and ironing board, refrigerator, and microwave. Free wireless internet throughout the hotel. Complimentary expanded continental breakfast. Outdoor pool. Two restaurants on property: Lancaster Brewing Company, a full service restaurant with a lounge, open for lunch and dinner, and Gustoso, a take-out restaurant featuring pizza, sandwiches, and salads.

- Guest Rooms: 174
- Comp Policy: 1 comp per 20 paid rooms



## RADISSON HOTEL HARRISBURG

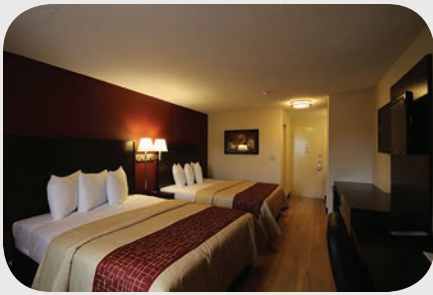
1150 Camp Hill Bypass, Camp Hill PA 17011  
717-433-9737 (Sales) • 717-763-7120 (Fax)  
Email: [sales@radpenn.com](mailto:sales@radpenn.com)  
[radisson.com/camphillpa](http://radisson.com/camphillpa)

Our guest rooms include all of today's necessities in a comfortable atmosphere. Our on-site restaurant serves delicious American cuisine and is open for breakfast, lunch, and dinner. Your group can also have their meal in one of our 16 banquet rooms. The Radisson offers a state-of-the-art fitness center and business center. Our hotel sits on 16 acres with plenty of free parking for cars and buses. We're conveniently located just two miles from downtown Harrisburg, 15 miles from Hershey, and 45 minutes from Lancaster or Gettysburg. The Radisson Hotel Harrisburg in Camp Hill is the perfect place for all travelers to the area.

- Guest Rooms: 250
- Comp Policy: 1 per 25 paid rooms



# LODGING



## RED ROOF INN HERSHEY

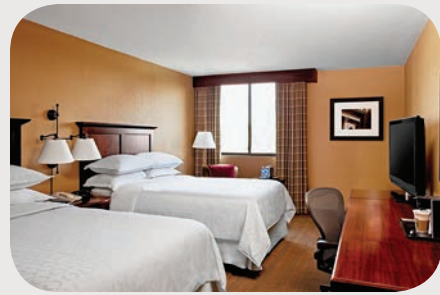
1806 E. Chocolate Avenue, Hershey, PA, 17033

717-533-1234 (Main) • 800-733-7663

Email: [i0401@redroof.com](mailto:i0401@redroof.com)

[redroof.com/property/Hershey/PA/17033/-/RRI401/](http://redroof.com/property/Hershey/PA/17033/-/RRI401/)

Just opened Summer 2015! The Sweetest Red Roof Inn is now open in Hershey, PA! Located just minutes from *Hersheypark*, *ZooAmerica*, *Chocolate World*, The Giant Center and Penn State Hershey Medical Center. This 100% smoke-free property is the perfect place for your fun family vacation as well as all of your business needs. The Red Roof Inn Hershey offers rooms with queen sized beds, free continental breakfast, free WiFi, and parking. All of our beautifully appointed rooms also include a mini fridge and microwave, flat screen TV, HBO and more! Relax around our outdoor swimming pool and enjoy use of our picnic areas. Truly a sweet place located in the sweetest town on earth!



## SHERATON HARRISBURG HERSHEY

4650 Lindle Road, Harrisburg, PA, 17111

717-564-5511 (Main) • 717-564-2476 (Fax)

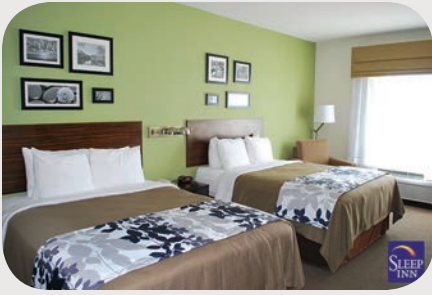
Email: [contact@sheratonharrisburghershey.com](mailto:contact@sheratonharrisburghershey.com)  
[sheratonharrisburghershey.com](http://sheratonharrisburghershey.com)

For our motorcoach travelers the Sheraton offers convenient onsite coach parking, 24-hour gift shop, an indoor/outdoor pool, large banquet rooms for group meals, a warm and welcoming staff and many shops within walking distance. Our location is convenient for hub and spoke tours.

- Guest Rooms: 347
- Comp Policy: Negotiated per tour



# LODGING



## **SLEEP INN & SUITES HARRISBURG/HERSHEY**

631 A Eisenhower Blvd., Harrisburg, PA, 17111  
717-564-8888 (Main) • 717-695-7736 (Fax)  
Email: gm.pa558@choicetohotels.com  
sleepinnharrisburg.com

Located minutes from all the attractions in Harrisburg and Hershey, this new generation Sleep Inn & Suites is looking forward to serving your hospitality needs! This 100% non-smoking hotel features 74 spacious modern rooms with 37" flat screen TVs with HBO. Microwaves, refrigerators, coffee makers, hair dryers, irons and full-size boards, and in-room safes are standard in each and every guest room. An indoor heated pool, fitness facility, and business center are also available for guest use. A free deluxe hot continental breakfast is served daily and included with your stay. Our free breakfast includes waffles, eggs, sausage, fresh fruit, yogurt, bagels, muffins, assorted pastries and fresh juice will save you money and start your day off to a fabulous start. Coffee, tea, and hot chocolate are available 24 hours every day in our lobby. Enjoy a free fresh baked cookie every evening. Free high speed wireless Internet is available throughout the entire hotel. Free business services are available including free local and long distance calling. We cater to all groups young, old, small and large. You are sure to get a great night's sleep at the Sleep Inn & Suites!

- Guest Rooms: 74
- Comp Policy: 1 comp per 10 paid rooms.  
Driver/Tour Guide



## **SPRINGHILL SUITES BY MARRIOTT HARRISBURG HERSHEY**

15 Capital Drive, Harrisburg, PA, 17110  
717-540-5100 (Main) • 717-540-5190 (Fax)  
Email: kdamone@khmhotels.com  
marriott.com/haret

The newly renovated SpringHill Suites by Marriott Harrisburg / Hershey is centrally located to Pennsylvania's State Capital, PA Farm Show Complex, HERSHEY PARK, Chocolate World attractions and surrounding destinations such as Lancaster's Amish Country and Gettysburg Battlefields. You'll find plenty of room to relax in our generous suites, 37" flat screen LCD HD TV's, microwave, mini-fridge and free wireless high speed internet. Revitalize each morning with our new breakfast buffet or end your evening with a relaxing cocktail at our Sky Lounge. We are proud to present a 100% smoke free policy. Experience SpringHill Suites by Marriott Harrisburg Hershey.

- Guest Rooms: 118
- Comp Policy: 1 per 30





# LODGING



## SPRINGHILL SUITES BY MARRIOTT HERSHEY NEAR THE PARK

115 Museum Drive, Hershey, PA, 17033  
717-583-2222 (Main) • 877-720-1291  
717-583-2111 (Fax)  
Email: [shsh@horstrealty.com](mailto:shsh@horstrealty.com)  
[springhillsuiteshershey.com](http://springhillsuiteshershey.com)

Centrally located in Hershey, next door to the AACA — A World Class Automotive Experience! Our convenient location is one mile from *HERSHEYPARK®*; *HERSHEY'S CHOCOLATE WORLD®*; and the GIANT Center; 2 miles from Tanger Outlets of Hershey and just a few miles from the Hollywood Casino and Harrisburg attractions. We also recommend this central hub for day-trips to Lancaster, York and Gettysburg attractions. Our studio suites offer comfortable seating area with pullout sleeper sofas, microwave/refrigerator/coffee service kitchenette, complimentary internet, indoor pool, fitness center and breakfast buffet. A lobby-level meeting room or spacious breakfast area is available for group activities.

- **Comp Policy:** Please call for policy



## STAYBRIDGE SUITES HARRISBURG-HERSHEY

920 Wildwood Park Drive, Harrisburg, PA, 17110  
717-233-3304 (Main) • 717-233-3305 (Fax)  
Email: [j.bacon@guestsinc.com](mailto:j.bacon@guestsinc.com)  
[staybridgesuites.com/harrisburgpa](http://staybridgesuites.com/harrisburgpa)

Studio, One Bedroom, and Two Bedroom/Two Bathroom Suites are available in a home-like atmosphere, with a fully equipped kitchenette in every room! Complimentary daily full hot breakfast buffet plus complimentary light dinner and beverages three evenings per week are provided in this upscale extended stay hotel. We urge you to "Get Comfortable" and enjoy complimentary high speed internet, free parking, business center, guest laundry facilities, BBQ Pavilion, plus indoor pool, fitness room, and IHG Rewards points. Located conveniently off I-81 near I-83, and convenient to the PA State Capitol and downtown Harrisburg, the Staybridge Suites sits adjacent to the PA Farm Show Complex.

- **Guest Rooms:** 127
- **Comp Policy:** 1 per every 30 rooms consumed plus reduced rate for driver and guide



# LODGING



## TOWNEPLACE SUITES BY MARRIOTT HARRISBURG/HERSHEY

450 Friendship Road, Harrisburg, PA, 17111  
717-558-0200 (Main) • 717-558-0700 (Fax)  
Email: [jennifer.field@hhmlp.com](mailto:jennifer.field@hhmlp.com)  
[towneplaceharrisburg.com](http://towneplaceharrisburg.com)

Our hotel offers everything you need to make the most of your Harrisburg, PA visit. Settle in to one of our spacious, newly remodeled suites, loaded with amenities like full kitchens and complimentary WIFI. Studio, One and Two bedroom suites available. Additional perks include flat-screen TVs in every suite and free onsite parking. Start your morning with a free breakfast before exploring the area. Restaurants and shopping within walking distance.

- Guest Rooms: 107
- Comp Policy: One per 30 paid



## WYNDHAM GARDEN HOTEL HARRISBURG/HERSHEY

765 Eisenhower Blvd., Harrisburg, PA, 17111  
717-558-9500 (Main) • 800-WYNDHAM  
717-558-8956 (Fax)  
Email: [valarie.black@wynharrisburg.com](mailto:valarie.black@wynharrisburg.com)  
[wyndham.com/hotels/MDTWY/main.wnt](http://wyndham.com/hotels/MDTWY/main.wnt)

Breakfast can be included in group rate. Free bus parking and close to Hershey! The Wyndham Garden Harrisburg/Hershey hotel is just minutes from the Harrisburg International Airport, downtown Harrisburg and the State Capitol. Guests of the hotel can also enjoy exciting entertainment and attractions just eight miles away at *Hersheypark* and the Hershey GIANT Center.

- Guest Rooms: 167
- Comp Policy: 1 comp per 25 rooms paid





## FENICCI'S OF HERSHEY

102 West Chocolate Avenue, Hershey, PA 17033  
717-533-7159 (Main)  
Email: philipguarno@gmail.com  
feniccis.com

Hershey's oldest freestanding restaurant - a Hershey tradition since 1935! A local favorite for 80+ years. Featuring our famous DeAngelis sauces and our famous upside-down pizza. Our full menu of homemade, delicious Italian dishes featuring steak, seafood, and pasta, as well as Pub menu and sandwich selections are offered all day and late night. Bar with live, local entertainment on weekends. Home to the stars, cast after-parties, and celebrities of the Hershey Theatre. Fenicci's of Hershey is conveniently located on Chocolate Avenue directly across from The Hershey Story, the Museum on Chocolate Avenue. Join us on our outdoor patio overlooking the Hershey Story and the Kissing Tower and enjoy all that beautiful downtown Hershey has to offer. We INVEST in Hershey because we BELIEVE in Hershey. Top rate on TripAdvisor & other sites. Featured in *USA Today* and *Comcast Best of the City*.

- Comp Policy: 1 per 25
- Groups up to 150 accepted



## HERSHEY ROAD FAMILY RESTAURANT

257 North Hershey Road  
Harrisburg, PA 17112  
717-545-2831 • 717-545-2529 (Fax)  
Email: comfortfood@hersheyrdfamilyrestaurant.com  
hersheyrdfamilyrestaurant.com

170 seat family restaurant conveniently located off Interstate 81 near Hershey. Located just five miles from *Hersheypark*, *Hershey's Chocolate World* and *Tanger Outlets*. We can accommodate groups of up to 50 people with the convenience of five major brand hotels located nearby. Lots of free parking space available to accommodate buses. Bus Drivers receive complimentary meal. Our goal is to provide your group with the best experience possible.



## PANERA BREAD CATERING

4263 Union Deposit Road, Harrisburg, PA, 17111  
 717-309-9608 (Main)  
 Email: Tracey.Lepere@panerabread.com  
 paneracatering.com

Panera Bread's Catering can be customized to fit all your catering needs. Enjoy the same delicious and carefully crafted food you have experienced in our bakery-cafes arranged to meet your specific requests. Whether you need boxed lunches for travel, our extensive lunch spread for a large group, or breakfast before enjoying our beautiful area attractions, Panera Bread can make your life easier by handling your catering. Our Regional Catering Sales Manager, Tracey Lepere, would be happy to gather the details of your event and then help to plan and execute your catering needs with flawless precision. You can also enjoy our Panera Bread menu at any of our area locations listed below or order through our website. We look forward to helping you enjoy Panera Bread!

### Panera Bread Harrisburg Locations:

4263 Union Deposit Road  
 Harrisburg, PA 17111  
 717-558-8852

5125 Jonestown Road  
 Harrisburg, PA 17112  
 717-671-1402

### Panera Bread Hershey Location:

1178 Mae Street  
 Hummelstown, PA 17036  
 717-533-5242

### Panera Bread Camp Hill Location:

1500 Camp Hill Mall:  
 Camp Hill, PA 17011  
 717-920-9901



## PASSAGE TO INDIA

520 Race Street, Harrisburg, PA, 17104  
 717-233-1202 (Main) • 717-233-1202 (Fax)  
 passagetointiaharrisburgpa.com

Whether it's for business, weddings, birthdays or another type of event, we can make sure it is a memorable one.





## SUSQUEHANNA HARVEST SEASONAL GRILL & WINE BAR

2625 Brindle Avenue Harrisburg, PA, 17110  
(717) 545-4028 (Main)  
Email: [harrisburg@harvestseasonalgrill.com](mailto:harrisburg@harvestseasonalgrill.com)  
[harvestseasonalgrill.com](http://harvestseasonalgrill.com)

Seasonally changing, farm-to-table restaurant.  
Excellent wine list.

- Attention to Food Allergies (Gluten, Dairy, Vegetarian)
- Under 500 calorie menu items
- Large private party spaces available to reserve with food and beverage minimums, upscale yet relaxed atmosphere.
- Brunch Offered Saturdays & Sundays 10:00a.m. – 3:00p.m.



## TED'S BAR & GRILL

7300 Allentown Boulevard, Harrisburg, PA, 17112  
717-652-3832 (Main)  
Email: [tedsbarandgrill17112@yahoo.com](mailto:tedsbarandgrill17112@yahoo.com)  
[tedsbarandgrill.com](http://tedsbarandgrill.com)

### *Ted's Bar & Grill Midtown*

1313 North Second Street, Harrisburg, PA 17012  
717-232-2522  
Email: [tedsmidtown@gmail.com](mailto:tedsmidtown@gmail.com)  
[tedsbarandgrill.com](http://tedsbarandgrill.com)

Best Wings in Town! Two great locations, same great wings. Ted's Bar & Grill is a rapidly expanding family friendly neighborhood bar and restaurant known for the Best Wings in Harrisburg, Lamb on the Rod, and authentic Pittsburgh Sandwiches. Featuring an award winning menu and food made fresh daily. Check out our weekly food and drink specials. We're excited to announce that our Allentown Boulevard location has relocated to an expanded facility in the Fall of 2015. The new location features a deck, live music, ample parking, plus two private rooms perfect for hosting company meeting, private functions and more.

# DINING *in Hershey*



## THE CIRCULAR

717-534-8800 (Main)  
TheCircular.com

Experience the fresh flavors of fine dining and enjoy history with a twist of innovation in this iconic restaurant. Mr. Hershey's belief that every dining guest should feel part of the experience inspired the "circular" design for The Hotel Hershey's centerpiece (and newly-renovated) restaurant.



## HARVEST

717-534-8800 (Main)  
DiningInHershey.com

Genuine American cuisine using fresh, local ingredients, featuring microbrews and an American wine list. Enjoy a seasonally-changing menu with gorgeous views of the lush grounds of The Hotel Hershey. Private dining space on the main floor and private meeting space on the second floor.



## TREVI 5

DiningInHershey.com

An authentically modern Italian grill, offering a contemporary twist on Italian cuisine. It's hard to pick a favorite from the long list of mouthwatering small-plate appetizers. This resort casual space also has a private dining area.



## THE IBERIAN LOUNGE

717-534-8800 (Main)  
DiningInHershey.com

The perfect place for your Hotel Hershey nightcap. Lite fare and chocolate cocktails are served by the grand fireplace in this cozy lounge. Live music fills the room on weekends.



## HERSHEY® GRILL

717-534-8601 (Main)  
DiningInHershey.com

Focused on culinary details and creative flavor combinations, seasonally-changing menus have something for everyone. The Hershey Grill is located at The Hershey Lodge.

# DINING *in Hershey*



## THE BEARS' DEN

717-534-8601 (Main)  
DiningInHershey.com

Catch all the sports action on a 7'x12' video wall and 28 HDTVs in a casual, hockey-themed atmosphere. Whatever the season, The Bears Den at Hershey Lodge keeps you in the game.



## THE FOREBAY LOUNGE

717-534-8601 (Main)  
DiningInHershey.com

Creative comfort food, including premium steaks, seafood and pastas. All served in a cozy loft setting at The Hershey Lodge. Outdoor seating for the warm seasons.



## LEBBIE LEBKICHER'S®

717-534-8601 (Main)  
DiningInHershey.com

Enjoy classic breakfast items, fresh fruit, juices and specialty settings in a family-friendly setting. A great way to start your day with a quick and filling meal after a good night's sleep at The Hershey Lodge.



## DEVON SEAFOOD + STEAK

717-508-5460 (Main)  
DiningInHershey.com

The area's freshest premium seafood, an extensive wine cellar, and signature cocktails in a comfy-chic atmosphere in the heart of Downtown Hershey. Private dining space available.



## HOULIHAN'S

717-534-3110 (Main)  
DiningInHershey.com

Laid back, but stylishly modern with fresh dishes, hand-crafted cocktails and plenty of happy hour specials. Private dining room and seasonal outdoor seating also available.

# DINING



## WHAT IF ... OF HERSHEY

845 E. Chocolate Ave., Hershey, PA, 17033  
717-533-5858 (Main) • 717-533-5848 (Fax)  
Email: [office@whatifdining.com](mailto:office@whatifdining.com)  
[whatifdining.com](http://whatifdining.com)

We are located in the Sweetest Place on Earth™ – Hershey, Pennsylvania. Begin your experience with our famous infused martinis or choose from our extensive wine list. Our full-service menu offers signature dishes, hand-cut steaks, fresh fish and seafood, pasta dishes and much more. Sweet endings are a ritual with all of our desserts made on premise. Private banquet facilities and off-premise catering options are available. We host bus tours, business meetings, youth groups, reunions, etc., for a private dining experience for lunch or dinner. Minimums apply and you can choose pre-set menus! Join us on Chocolate Avenue, just a mile from Hershey attractions for innovative drinks, eclectic food, and true Hershey hospitality.

# SERVICES



## ALL ABOUT TOURS / AMISH NEIGHBORS TOURS

750 May Post Office Road, Strasburg, PA 17579  
717-687-8630 (Main) • 717-687-3732 (Fax)  
Email: [amishria@aol.com](mailto:amishria@aol.com)  
[allabouttours.net](http://allabouttours.net)

Started in 1986, Amish Neighbors Tours is a full service receptive tour operator located in the heart of the Pennsylvania Dutch Country. Let us take you on a journey into America's past and the Amish community's present. Spend the day exploring the beauty and rich heritage of Lancaster County. Conveniently located in Strasburg, we can provide your group with anything from a three hour tour to a complete 3–5 day package in Amish Country, Hershey, Gettysburg and Philadelphia.





# SERVICES



## FORT INDIANTOWN GAP COMMUNITY CLUB

9-65 Fisher Avenue, Annville PA 17003  
717-861-2450 (Main)  
catering@gapmwr.com

Fort Indiantown Gap Community Club and Keystone Conference Center (KCC) are open to the public and are available for special events and catered services. The Community Club consists of a cafeteria area, several meeting/banquet halls, and a pub area. The KCC offers 10,000 square feet of space that can be configured to accommodate your event or meeting. Service to both facilities offers a variety of menus that may be tailored to the event. Army Catering provides the attention, service, flexibility, affordability, and individualism you deserve. Profits directly support Soldier and Family programs. Call for competitive rates!



## HARRISBURG HERSHEY TOURS, TALKS AND WALKS

1483 Maplewood Drive, New Cumberland, PA 17070  
717-770-0235 (Main)  
Email: diamunns@aol.com  
harrisburgtours.com

Harrisburg Hershey Tours, Talks & Walks offers a unique STEP-ON-GUIDE service to individuals or groups. We make arrangements to "showcase" our city, telling how, why, when and where it was founded. In 1717, John Harris, with a charter from William Penn's proprietors set out to establish this community on the Susquehanna River. The town blossomed with industrious people. Despite wars and economics, the community grew. It became the "crossroads" of 7,000 years of Native American Indians, colonists, businessmen and politicians. Stagecoaches, canals, railroads, airlines and excellent highways gave this abundant agricultural land the most accommodating opportunities possible. Today, Harrisburg Hershey Tours greet guests and presents them with a tremendous opportunity to learn about our city, see our city and come to know our city.

2-6  
HRS



# SERVICES



## **JP LILLEY & SON, INC.**

2009 North Third Street, Harrisburg PA 17102  
717-238-8123 (Main) • 800-554-5539  
717-238-9145 (Fax)  
Email: [rentals@jplilley.com](mailto:rentals@jplilley.com)  
[jplilley.com](http://jplilley.com)

When you need audio visual equipment rentals and services for your event, meeting, conference, or presentation, get the highest quality equipment, fastest service, and lowest rates from JP Lilley. Our warehouses contain thousands of pieces of audio visual equipment for rental across the state. We routinely provide audio visual rentals and services for events with several people to several thousand people. Hassle free audio visual rentals — JP Lilley! Contact us today and #KnowItWorks!



## **LETORT VIEW COMMUNITY CENTER AT THE CARLISLE BARRACKS**

313 Lovell Avenue, Carlisle, PA, 17013  
717-245-3960 (Sales Office) • 717-245-3840 (Fax)  
Email: [catering@carlislewmwr.com](mailto:catering@carlislewmwr.com)  
[carlislewmwr.com](http://carlislewmwr.com)

Letort View Community Center is nestled among the historic Carlisle Barracks and offers a charming, magnificent venue for your next wedding, anniversary, conference, retirement ceremony, or other special occasion. It features over 15,000 sq feet of flexible meeting/banquet space, an outside pavilion with poolside bar, dedicated professional catering staff, creative cuisine, and superb service. We understand choice of venue is one of the most important decisions you will make in preparation for your event. Let the Letort View Community Center provide the attention, service, flexibility, affordability, and individualism you deserve.

# TRANSPORTATION



## AMTRAK® KEYSTONE SERVICE

Fourth & Chestnut Streets, Harrisburg, PA, 17101  
1-800-USA-RAIL (Main)  
amtrak.com

Discounted rates for attendees are available by calling the Amtrak® Meeting & Convention Desk at 800-872-1477. Some Amtrak® travel restrictions and blackout dates may apply. For those attending meetings or conventions and wish to travel on their own schedule from different cities, Amtrak® Meeting & Convention Desk (800-872-1477) can provide attendees with the maximum flexibility and a generous 10% discount off the lowest applicable fare for travel into your designated meeting/convention location from any other Amtrak® city. (Some restrictions apply; Amtrak® is a registered trademark of the National Railroad Passenger Corp.)



## BAILEY COACH

55 S. Fayette Street, York, PA 17404  
717-718-0490 (Main) • 717-718-4069 (Fax)  
Email: ashley@baileycoach.com  
baileycoach.com

Ride in style with Bailey Coach! With a fleet of late model deluxe motor-coaches, Bailey Coach provides transportation for schools, churches, senior groups, and team travel. Our luxury coaches offer seating for 26, 47, or 55 passengers and have the following features:

- Panoramic windows
- Fully equipped DVD/CD players
- Individual light and air controls
- Plush reclining seats with arm rests
- FM radio
- Restroom
- Satellite tracking
- WiFi

### Options for Smaller Groups

For smaller groups and individuals, we offer private car and van transportation. Our comfortable luxury sedans and passenger vans are perfect for small group outings or transfers to the region's airports, train stations, and cruise terminals!

### Join Our Mailing List!

Scan this QR code with your smartphone



Don't have a smart phone?  
Text BAILEYCOACH to 22828

# TRANSPORTATION



## ELITE COACH

1685 West Main Street, Ephrata, PA 17522  
717-733-7710 (Main) or 800-722-6206  
Email: [info@elitecoach.com](mailto:info@elitecoach.com)  
[elitecoach.com](http://elitecoach.com)

For over 25 years, Elite Coach has provided group travel and ground transportation services, catering to businesses, schools, groups, clubs, families and individuals that require dependable, worry-free charter bus transportation. Through our family owned business, we have established a tradition of trust and loyalty with our customers by responding to each individual with cordial, personalized attention.

Our specialties include:

- Local and long distance travel
- Pier and airport transfers
- Corporate and group shuttle services
- Wedding and event shuttle services
- Group tour planning services

Elite Coach features 23 late-model coaches ranging from 47–56 passengers. For smaller groups, we offer 25, 30 or 38 passenger coaches. For special events, we have a 31 passenger VIP luxury coach as well as a 20 passenger nostalgic trolley. Our fleet consists of plush reclining seats, state-of-the-art climate controls, DVD players, restrooms, 120 volt outlets, Wi-Fi and other amenities to make getting to your destination a comfortable and relaxing experience.

Look to Elite Coach's Tour Planning Department to provide you with an all-inclusive, hassle free package. Our group specialists have the expertise to develop unique ideas for trips that will suit the interests and budget of your group.

Elite Coach's friendly and professional drivers continually sharpen their skills and take pride in making every trip a great experience for our passengers. Every driver undergoes random drug screenings, DOT mandated physicals, background checks, and ongoing training.



## EXECUTIVE COACH INC.

525 Beaver Valley Pike, Lancaster, PA 17602  
717-464-2726 (Main) • 800-499-5765  
717-464-4033 (Fax)  
Email: [sales@executivecoach.net](mailto:sales@executivecoach.net)  
[executivecoach.net](http://executivecoach.net)

Executive Coach has been providing group charter services and ground transportation since 1979. Our professional staff and drivers are here to make sure your experience is number one in customer service. Our services include:

- Motorcoach charter transportation
- Corporate events
- Shuttle services
- School groups
- Pier transfers
- Long distance service

The Executive Coach fleet consists of 40, and 56 passenger, fully-equipped coaches. 120 volt outlets, complimentary WiFi, DVD player and ADA lift coaches are available. Our professional uniformed drivers have passed FBI, PA State Police checks and Child Abuse clearances. All drivers carry a cell phone and provide safe and courteous service. Our office and service center is located 3 miles south of Doubletree Resort Lancaster with a full service garage facility. Our trained mechanic team can provide services such as general maintenance, rest room service, and wash service. Other services available. Sit back, relax, leave the driving to us and enjoy your destination well-rested!



# TRANSPORTATION



## HARRISBURG INTERNATIONAL AIRPORT

One Terminal Drive, Middletown, PA, 17057  
Suite 300  
717-948-3900 (Main) • 888-HIA-JETS  
717-948-4636 (Fax)  
Email: [info@saraa.org](mailto:info@saraa.org)  
[flyhia.com](http://flyhia.com)

Harrisburg International Airport (MDT) is conveniently located in South Central Pennsylvania near the state's capitol and serves as an efficient gateway to/from the region. MDT is served by five airlines with 11 non-stop destinations and one international destination with hundreds of connections worldwide.



## LOWEE'S GROUP TOURS / INNOVATIVE COACHES

P.O. Box 6658, Harrisburg, PA, 17112  
717-657-9658 (Main) • 717-652-9476 (Fax)  
Email: [ckelly@lowees.com](mailto:ckelly@lowees.com)  
[lowees.com](http://lowees.com)

We have been in business for over 30 years and pride ourselves in providing an exceptional event. We offer services for every age group from students to seniors. Our tours and events are specially designed to create a unique experience. Groups are our Specialty! Since 1984, we have provided the very best in tours and service in the business. As thousands of satisfied groups will agree, you are in good hands with us. Need a guide, motorcoach, or a great Heart of Pennsylvania Tour? We've got you covered! At Lowee's Group Tours and Innovative Coach we understand our job is to make you look good!





## **PREMIERE #1 LIMOUSINE SERVICE**

2000 Vine Street, Middletown, PA 17057  
717-616-8995 (Main) • 717-616-8415 (Fax)  
Email: [info@premiere1limousine.com](mailto:info@premiere1limousine.com) •  
[premiere1limousine.com](http://premiere1limousine.com)

For 15 years, Premiere #1 Limousine Service has provided luxury transportation services in Central PA. In March 2009, a new owner acquired the business and has since expanded the fleet to 50 vehicles, including luxury sedans, SUVs, passenger vans, corporate limousines, mini buses and luxury motorcoaches. Our 24-hour dispatch center is there to answer your call 24/7, whether you have a question, need a rate or a ride, we are ready to work when you are.

### **Transportation Services Offered**

- Airport Shuttles
- Group Logistic Planning
- Corporate Moves
- Special Occasions & Events
- Local Tours

### **Areas Serviced**

- Hershey
- York
- Harrisburg
- Gettysburg
- Lancaster
- Carlisle

### **Airports Serviced**

- Harrisburg International Airport (MDT)
- Baltimore Washington International (BWI)
- Reagan National Airport (DCA)
- Newark Liberty International Airport (EWR)
- Dulles International Airport (IAD)
- John F. Kennedy International Airport (JFK)
- Philadelphia International Airport (PHL)

# UBER

## **UBER**

Harrisburg, PA, 17101  
570-871-0449 (Main)  
[uber.com/events](http://uber.com/events)

Uber is a mobile app that connects riders with vetted drivers within minutes. With Uber, transportation is safe, reliable, and affordable. Hosting an event? UberEVENTS allows you to pre-purchase rides for your tour group members, conference attendees, or event guests seamlessly at the touch of a button. Arrange how, when and where your guests ride — and only pay for what your guests use. UberEVENTS is completely self-service, so you can purchase ride vouchers at any time. Request one custom promo code for your whole group to use, or buy several unique codes to distribute to your group. Visit [uber.com/events](http://uber.com/events) to purchase.

Add your event to the list of successful meetings, expos, shows and sports events that happen year round in the Hershey Harrisburg Region!



**2016 LEGO® KidsFest** | April 8 – 10, 2016

**2016 Fire Expo** | May 20 – 22, 2016

**The Color Run Hershey 2016** | June 4, 2016

**2016 USJN Hershey Showcase** | June 25 – 28, 2016

**2016 American Legion** | July 12 – 16, 2016

**2016 Mecum Car Auction** | July 21 – 23, 2016

**2016 Joyce Meyer Hershey** | August 25 – 27, 2016

**2016 Eastern Division National Fall Meet** | October 5 – 8, 2016

**2016 Pennsylvania National Horse Show** | October 13 – 22, 2016

**2017 PA Farm Show** | January 7 – 14, 2017

**2017 Great American Outdoor Show** | February 4 – 12, 2017

**2017 Croatian Foundation Annual Event** | November 1 – 6, 2017

**Visit**  
**HERSHEY &  
HARRISBURG**



# The Hershey Harrisburg Region



## Family Atmosphere

Outdoor beauty. Urban treasures. All right here in the Hershey Harrisburg Region for your group to enjoy. Is your group full of family or just a group that feels like family? Either way, you'll be treated like family! Catch a ball game in a private suite at our island ball park or meet at the dinner table for farm to table, small plate or family-style meals prepared by our talented chefs.



## Outdoor Entertainment

Hershey and Harrisburg are located amidst gorgeous vistas of the Susquehanna River, local parks, craft vineyards and other green spaces. Each season plays host to events and activities that allow your group to relax and recharge in the fresh outdoor air.



## Urban Appeal

The City of Harrisburg and many communities in the region are home to a variety of inviting urban attractions. Small shops, locally owned dining spots and museums are eager to host and entertain your group.