

LAS VEGAS **CONVENTION** CENTER



THE **PEOPLE** WHO **MAKE IT ALL WORK.**

At every facility, resort and venue, you'll find seasoned professionals who will see to it that your meeting or convention receives rave reviews. Registration services will make the hassles of planning a meeting disappear.

ACCESSIBILITY IS KEY.

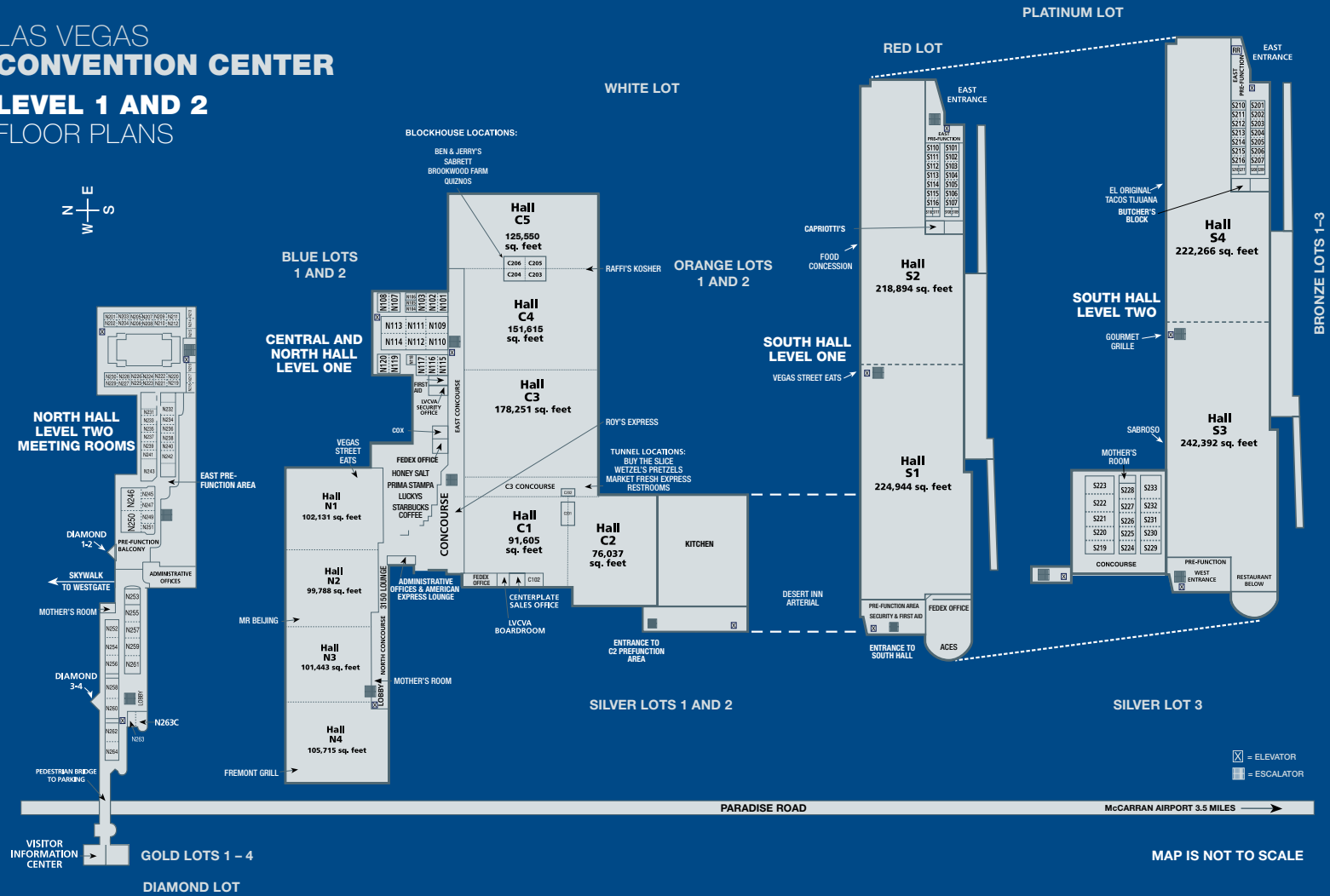
Las Vegas' mild weather with 320 days of sunshine and modern transportation facilities make it one of the world's most accessible convention and meeting destinations. McCarran International Airport boasts high-efficiency ratings for on-time arrivals and departures. The airport is just minutes from all hotels, motels and convention facilities via taxi, bus, rental car, or ride share vehicles.



500 03/17 #50172

LAS VEGAS CONVENTION CENTER

LEVEL 1 AND 2 FLOOR PLANS





WE'VE
CONSIDERED
 ALL YOUR **OPTIONS.**

The Las Vegas Convention and Visitors Authority presents the Las Vegas Convention Center, a facility designed to maximize your event's convenience, efficiency and impact. The Las Vegas Convention Center can accommodate almost any size meeting or convention.



OUTSTANDING **FACILITIES AND MEETING ROOMS.**

- Exhibit halls – all contiguous space
- 3.2 million square feet of total meeting and exhibit space
- 1,940,631 square feet of exhibit space for 10,072 10'x10' booths
- 241,536 square feet of meeting space
- 145 meeting rooms
- 225,000-square-foot lobby/registration space
- Banquet facilities for 12,000
- Two 15,000-square-foot restaurants: Luckys Restaurant seats 600 and Aces offers a combined total of nearly 1,000 seats.
- Parking for more than 7,000 cars
- Life support and safety systems throughout
- The capabilities for allowing simultaneous setup and breakdown of multiple shows. The 11 halls on ground level allow for unlimited floor-load capacity and the two halls on the second floor have 300 lbs. per square foot load capacity. Convenient access to all exhibit halls
- Meeting rooms are all accessible with their own entrances.
- Full compliance with the American Disabilities Act

EXHIBIT HALL INFORMATION

EXHIBIT HALL	SQUARE FEET	DAILY RATE \$	CEILING HEIGHT	10X10 BOOTH CAPACITY
N1	102,131	16,850	35'	510
N2	99,788	16,450	35'	514
N3	101,443	16,750	33'	505
N4	105,715	17,450	33'	540
TOTAL N1-N4	409,077	\$67,500		
C1	91,605	15,100	25'	501
C2	76,037	12,550	25'	427
C3	178,251	29,400	31' & 35'	1,006
C4	151,615	25,000	35'	852
C5	125,550	20,700	35'	667
TOTAL C1-C5	623,058	\$102,750		
S1	224,944	33,400	25'	1,082
S2	218,894	32,500	30'	1,043
S3	242,392	36,000	25'	1,219
S4	222,266	33,000	25'	1,078
TOTAL S1-S4	908,496	\$134,900		
TOTAL ALL HALLS	1,940,631	\$305,150		

Notes:

1. Ceiling height in the C3 Concourse is 31'.
2. N2, N3 and N4 Halls have lower ceiling heights under the Skywalk and at the entrances.
3. The daily rate for the North and Central Halls is based on .33 per net square foot per day or 50% net utilization of the hall.
The daily rate for the South Halls is based on .33 per net square foot per day or 45% net utilization of the hall.
4. The floor load limit on the C3 Concourse and Halls S3-S4 is 300 pounds per square foot and 100 pounds per square foot for the S3 lobby and bridge rooms.

MEETING ROOMS

MEETING ROOM	ROOM DIMENSION	SQUARE FEET	CEILING HEIGHT	DAILY RATE \$	THEATER CAPACITY	CLASSROOM CAPACITY	BANQUET CAPACITY
C102	51' X 42'	2,177	10'6"		147	96	120
C201	54' X 30'	1,598	9'8"		125	48	80
C202	28' X 29'	781	7'9"		48	20	30
C203	33' X 26'	870	8'6"		55	32	40
C204	33' X 26'	869	8'6"		55	32	40
C205	28' X 35'	775	8'6"		38	24	40
C206	24' X 36'	835	8'6"		54	32	50
N101	55' X 39'	2,020	12'	650	158	80	120
N102	55' X 39'	2,038	12'	650	158	80	120
N103	55' X 40'	2,026	12'	650	159	80	120
N104	23' X 19'	463	12'	150	28	12	20
N105	23' X 20'	479	12'6"	150	21	16	20
N106	23' X 20'	475	12'6"	150	21	16	20
N107	55' X 40'	2,029	12'6"	650	144	72	110
N108	55' X 40'	2,030	12'6"	650	144	72	110
N109	60' X 46'	2,809	20'	950	240	128	180
N110	60' X 47'	2,814	20'	950	240	128	180
N111	59' X 46'	2,802	20'	900	240	128	180
N112	59' X 47'	2,805	20'	950	240	128	180
N113	60' X 46'	2,812	20'	950	240	128	180
N114	60' X 47'	2,813	20'	950	240	128	180
N115	55' X 40'	2,032	12'6"	650	144	72	110
N116	55' X 40'	2,044	12'6"	650	144	72	110
N117	55' X 40'	2,027	12'6"	650	144	72	110
N118	31' X 23'	727	12'6"	250	44	24	30
N119	55' X 40'	2,025	12'	650	144	72	110
N120	55' X 40'	2,032	12'	650	144	72	110
N201	42' X 27'	1,065	12'	350	80	40	50
N202	42' X 28'	1,069	12'	350	80	40	50
N203	42' X 27'	1,060	12'	350	80	40	50
N204	42' X 28'	1,065	12'	350	80	40	50
N205	38' X 27'	954	12'	300	70	32	50
N206	38' X 27'	954	12'	300	70	32	50
N207	38' X 27'	969	12'	300	70	32	50
N208	38' X 27'	969	12'	300	70	32	50
N209	43' X 28'	1,088	12'	350	80	40	60
N210	43' X 27'	1,079	12'	350	80	40	60
N211	43' X 28'	1,090	12'	350	80	40	60
N212	43' X 27'	1,082	12'	350	80	40	60

MEETING ROOMS

MEETING ROOM	ROOM DIMENSION	SQUARE FEET	CEILING HEIGHT	DAILY RATE \$	HOLLOW SQUARE CAPACITY	U-SHAPED CAPACITY	CONFERENCE CAPACITY
C102	51' X 42'	2,177	10'6"		52	44	32
C201	54' X 30'	1,598	9'8"		52	40	32
C202	28' X 29'	781	7'9"		24	16	24
C203	33' X 26'	870	8'6"		32	24	24
C204	33' X 26'	869	8'6"		32	24	24
C205	28' X 35'	775	8'6"		24	24	24
C206	24' X 36'	835	8'6"		32	32	24
N101	55' X 39'	2,020	12'	650	52	44	32
N102	55' X 39'	2,038	12'	650	52	44	32
N103	55' X 40'	2,026	12'	650	52	44	32
N104	23' X 19'	463	12'	150	16	12	16
N105	23' X 20'	479	12'6"	150	16	12	16
N106	23' X 20'	475	12'6"	150	16	12	16
N107	55' X 40'	2,029	12'6"	650	52	44	32
N108	55' X 40'	2,030	12'6"	650	52	44	32
N109	60' X 46'	2,809	20'	950	68	48	32
N110	60' X 47'	2,814	20'	950	68	48	32
N111	59' X 46'	2,802	20'	950	68	48	32
N112	59' X 47'	2,805	20'	950	68	48	32
N113	60' X 46'	2,812	20'	950	68	48	32
N114	60' X 47'	2,813	20'	950	68	48	32
N115	55' X 40'	2,032	12'6"	650	52	44	32
N116	55' X 40'	2,044	12'6"	650	52	44	32
N117	55' X 40'	2,027	12'6"	650	52	44	32
N118	31' X 23'	727	12'6"	250	24	24	16
N119	55' X 40'	2,025	12'	650	52	44	32
N120	55' X 40'	2,032	12'	650	52	44	32
N201	42' X 27'	1,065	12'	350	40	32	36
N202	42' X 28'	1,069	12'	350	40	32	36
N203	42' X 27'	1,060	12'	350	40	32	36
N204	42' X 28'	1,065	12'	350	40	32	36
N205	38' X 27'	954	12'	300	40	32	36
N206	38' X 27'	954	12'	300	40	32	36
N207	38' X 27'	969	12'	300	40	32	36
N208	38' X 27'	969	12'	300	40	32	36
N209	43' X 28'	1,088	12'	350	40	32	36
N210	43' X 27'	1,079	12'	350	40	32	36
N211	43' X 28'	1,090	12'	350	40	32	36
N212	43' X 27'	1,082	12'	350	40	32	36

MEETING ROOMS

MEETING ROOM	ROOM DIMENSION	SQUARE FEET	CEILING HEIGHT	DAILY RATE \$	THEATER CAPACITY	CLASSROOM CAPACITY	BANQUET CAPACITY
N213	41' X 31'	1,068	12'	350	84	36	50
N214	30' X 31'	872	12'	300	44	24	40
N215	26' X 28'	755	12'	250	44	24	40
N216	26' X 20'	565	12'	200	28	16	30
N217	30' X 31'	857	12'	300	52	24	50
N218	40' X 31'	1,055	12'	350	72	32	50
N219	43' X 27'	1,086	12'	350	80	40	50
N220	43' X 27'	1,086	12'	350	80	40	50
N221	43' X 27'	1,076	12'	350	80	40	50
N222	43' X 27'	1,075	12'	350	80	40	50
N223	38' X 27'	956	12'	300	70	32	50
N224	38' X 27'	963	12'	300	70	32	50
N225	38' X 27'	955	12'	300	70	32	50
N226	38' X 27'	964	12'	300	70	32	50
N227	42' X 27'	1,061	12'	350	80	40	50
N228	42' X 27'	1,052	12'	350	80	40	50
N229	42' X 27'	1,067	12'	350	80	40	50
N230	42' X 27'	1,059	12'	350	80	40	50
N231	47' X 25'	1,155	13'	400	84	48	60
N232	45' X 43'	1,876	13'	600	160	80	120
N233	47' X 30'	1,379	13'	450	111	48	70
N234	43' X 30'	1,217	13'	400	91	40	70
N235	47' X 30'	1,379	13'	450	111	48	70
N236	43' X 30'	1,212	13'	400	85	40	70
N237	47' X 30'	1,381	13'	450	111	40	70
N238	43' X 29'	1,206	13'	400	85	32	60
N239	47' X 30'	1,379	13'	450	111	60	60
N240	43' X 30'	1,219	13'	400	78	60	50
N241	47' X 31'	1,380	13'	450	106	60	70
N242	43' X 43'	1,829	13'	600	139	80	100
N243	50' X 48'	2,298	12'6"	750	187	92	120
N245	45' X 37'	1,647	19'	550	105	64	80
N246	77' X 67'	5,206	19'	1,700	493	284	330
N247	45' X 40'	1,718	19'	550	119	80	90
N249	45' X 44'	1,903	19'	650	135	80	90
N250	77' X 67'	5,197	19'	1,700	493	264	320
N251	45' X 39'	1,640	19'	550	92	76	80

MEETING ROOMS

MEETING ROOM	ROOM DIMENSION	SQUARE FEET	CEILING HEIGHT	DAILY RATE \$	HOLLOW SQUARE CAPACITY	U-SHAPED CAPACITY	CONFERENCE CAPACITY
N213	41' X 31'	1,068	12'	350	40	32	36
N214	30' X 31'	872	12'	300	32	24	24
N215	26' X 28'	755	12'	250	32	24	20
N216	26' X 20'	565	12'	200	24	20	20
N217	30' X 31'	857	12'	300	24	24	20
N218	40' X 31'	1,055	12'	350	40	28	36
N219	43' X 27'	1,086	12'	350	48	32	36
N220	43' X 27'	1,086	12'	350	48	32	36
N221	43' X 27'	1,076	12'	350	48	32	36
N222	43' X 27'	1,075	12'	350	48	32	36
N223	38' X 27'	956	12'	300	40	32	36
N224	38' X 27'	963	12'	300	40	32	36
N225	38' X 27'	955	12'	300	40	32	36
N226	38' X 27'	964	12'	300	40	32	36
N227	42' X 27'	1,061	12'	350	40	32	36
N228	42' X 27'	1,052	12'	350	40	32	36
N229	42' X 27'	1,067	12'	350	40	32	36
N230	42' X 27'	1,059	12'	350	40	32	36
N231	47' X 25'	1,155	13'	400	40	32	36
N232	45' X 43'	1,876	13'	600	48	36	36
N233	47' X 30'	1,379	13'	450	40	32	36
N234	43' X 30'	1,217	13'	400	40	32	36
N235	47' X 30'	1,379	13'	450	40	32	36
N236	43' X 30'	1,212	13'	400	40	32	36
N237	47' X 30'	1,381	13'	450	40	32	36
N238	43' X 29'	1,206	13'	400	40	32	36
N239	47' X 30'	1,379	13'	450	40	32	36
N240	43' X 30'	1,219	13'	400	40	32	36
N241	47' X 31'	1,380	13'	450	40	32	36
N242	43' X 43'	1,829	13'	600	48	36	36
N243	50' X 48'	2,298	12'6"	750	48	36	36
N245	45' X 37'	1,647	19'	550	32	32	28
N246	77' X 67'	5,206	19'	1,700	96	76	52
N247	45' X 40'	1,718	19'	550	44	36	28
N249	45' X 44'	1,903	19'	650	40	36	36
N250	77' X 67'	5,197	19'	1,700	96	76	52
N251	45' X 39'	1,640	19'	550	32	32	28

MEETING ROOMS

MEETING ROOM	ROOM DIMENSION	SQUARE FEET	CEILING HEIGHT	DAILY RATE \$	THEATER CAPACITY	CLASSROOM CAPACITY	BANQUET CAPACITY
N252	58' X 47'	2,618	17'	850	232	128	130
N253	60'9" X 55'	3,218	17'	1050	282	180	180
N254	59' X 47'	2,675	17'	900	234	136	130
N255	55' X 55'	2,934	17'	950	256	132	160
N256	62' X 47'	2,805	17'	950	253	144	170
N257	59' X 55'	3,180	17'	1050	284	160	180
N258	63' X 47'	2,769	17'	900	254	136	150
N259	59' X 55'	3,152	17'	1050	273	148	170
N260	65' X 47'	2,893	17'	950	245	128	170
N261	56' X 55'	2,976	17'	1000	255	132	180
N262	61' X 47'	2,757	17'	900	256	128	170
N263	45' X 43'	1,945	14'	650	144	96	110
N263C	29' X 59'	1,605	14'	550	138	72	80
N264	53' X 47'	2,396	17'	800	214	104	130
DIAMOND 1	41' X 26'	598	9'	200	20	N/A	20
DIAMOND 2	27' X 26'	408	9'	150	20	N/A	20
DIAMOND 3	27' X 30'	443	10'	150	20	N/A	20
DIAMOND 4	27' X 30'	444	10'	150	20	N/A	20
S101	29' X 21'	608	13'	200	38	24	30
S102	29' X 44'	1,227	15'	400	78	40	60
S103	29' X 44'	1,227	15'	400	78	40	60
S104	29' X 44'	1,227	15'	400	78	40	60
S105	29' X 44'	1,229	15'	400	78	40	60
S106	29' X 44'	1,227	15'	400	78	40	60
S107	29' X 44'	1,227	15'	400	78	40	60
S108	31' X 21'	633	13'	200	35	24	40
S109	31' X 22'	618	13'	200	33	24	30
S110	29' X 44'	1,237	13'	400	78	40	60
S111	29' X 44'	1,225	15'	400	78	40	60
S112	29' X 44'	1,227	15'	400	78	40	60
S113	29' X 44'	1,224	15'	400	78	40	60
S114	29' X 44'	1,229	15'	400	78	40	60
S115	29' X 44'	1,226	15'	400	78	40	60
S116	29' X 44'	1,228	15'	400	78	40	60
S117	31' X 22'	636	13'	200	32	24	30
S118	31' X 21'	611	13'	200	30	16	30

MEETING ROOMS

MEETING ROOM	ROOM DIMENSION	SQUARE FEET	CEILING HEIGHT	DAILY RATE \$	HOLLOW SQUARE CAPACITY	U-SHAPED CAPACITY	CONFERENCE CAPACITY
N252	58' X 47'	2,618	17'	850	64	48	52
N253	60'9" X 55'	3,218	17'	1050	64	52	52
N254	59' X 47'	2,675	17'	900	56	52	52
N255	55' X 55'	2,934	17'	950	64	52	44
N256	62' X 47'	2,805	17'	950	72	56	52
N257	59' X 55'	3,180	17'	1050	64	56	52
N258	63' X 47'	2,769	17'	900	64	56	52
N259	59' X 55'	3,152	17'	1050	64	52	52
N260	65' X 47'	2,893	17'	950	72	60	52
N261	56' X 55'	2,976	17'	1000	64	56	44
N262	61' X 47'	2,757	17'	900	64	56	52
N263	45' X 43'	1,945	14'	650	52	46	36
N263C	29' X 59'	1,605	14'	550	44	50	80
N264	53' X 47'	2,396	17'	800	56	48	44
DIAMOND 1	41' X 26'	598	9'	200	16	12	12
DIAMOND 2	27' X 26'	408	9'	150	16	12	12
DIAMOND 3	27' X 30'	443	10'	150	16	12	12
DIAMOND 4	27' X 30'	444	10'	150	16	12	12
S101	29' X 21'	608	13'	200	24	20	20
S102	29' X 44'	1,227	15'	400	32	28	36
S103	29' X 44'	1,227	15'	400	32	28	36
S104	29' X 44'	1,227	15'	400	32	28	36
S105	29' X 44'	1,229	15'	400	32	28	36
S106	29' X 44'	1,227	15'	400	32	28	32
S107	29' X 44'	1,227	15'	400	32	28	32
S108	31' X 21'	633	13'	200	24	20	20
S109	31' X 22'	618	13'	200	24	20	20
S110	29' X 44'	1,237	13'	400	32	28	32
S111	29' X 44'	1,225	15'	400	32	28	32
S112	29' X 44'	1,227	15'	400	32	28	32
S113	29' X 44'	1,224	15'	400	32	28	32
S114	29' X 44'	1,229	15'	400	40	32	28
S115	29' X 44'	1,226	15'	400	24	36	32
S116	29' X 44'	1,228	15'	400	24	36	32
S117	31' X 22'	636	13'	200	24	24	16
S118	31' X 21'	611	13'	200	24	24	16

MEETING ROOMS

MEETING ROOM	ROOM DIMENSION	SQUARE FEET	CEILING HEIGHT	DAILY RATE \$	THEATER CAPACITY	CLASSROOM CAPACITY	BANQUET CAPACITY
S201	34' X 21'	709	13'	250	45	28	40
S202	29' X 44'	1,223	15'	400	78	36	60
S203	29' X 44'	1,215	15'	400	78	36	60
S204	29' X 43'	1,221	15'	400	78	36	60
S205	29' X 43'	1,216	15'	400	78	36	60
S206	29' X 44'	1,221	15'	400	78	36	60
S207	29' X 44'	1,220	15'	400	78	36	60
S208	31' X 21'	637	13'	200	35	24	30
S209	31' X 22'	617	13'	200	37	16	20
S210	34' X 44'	1,354	13'	450	89	48	80
S211	29' X 44'	1,229	15'	400	78	36	60
S212	29' X 44'	1,230	15'	400	78	36	60
S213	29' X 44'	1,182	15'	400	78	32	60
S214	29' X 44'	1,181	15'	400	78	32	60
S215	29' X 44'	1,230	15'	400	78	36	60
S216	29' X 44'	1,233	15'	400	78	36	60
S217	31' X 21'	639	13'	200	35	16	30
S218	31' X 22'	622	13'	200	35	16	30
S219	45' X 95'	4,228	18'	1,400	380	224	220
S220	45' X 97'	4,194	18'	1,400	414	224	220
S221	44' X 97'	4,216	18'	1,400	353	208	220
S222	60' X 97'	5,599	18'	1,850	475	256	270
S223	61' X 97'	5,680	18'	1,850	520	336	280
S224	45' X 52'	2,296	18'	750	160	116	120
S225	45' X 52'	2,245	18'	750	160	112	110
S226	44' X 52'	2,240	18'	750	160	116	110
S227	45' X 52'	2,245	18'	750	160	116	110
S228	56' X 52'	2,781	18'	900	200	144	140
S229	45' X 66'	2,937	18'	950	260	144	170
S230	44' X 66'	2,868	18'	950	234	144	150
S231	45' X 66'	2,876	18'	950	234	144	150
S232	45' X 66'	2,882	18'	950	252	144	150
S233	76' X 66'	4,921	18'	1,600	468	240	290

MEETING ROOMS

MEETING ROOM	ROOM DIMENSION	SQUARE FEET	CEILING HEIGHT	DAILY RATE \$	HOLLOW SQUARE CAPACITY	U-SHAPED CAPACITY	CONFERENCE CAPACITY
S201	34' X 21'	709	13'	250	32	24	24
S202	29' X 44'	1,223	15'	400	32	24	24
S203	29' X 44'	1,215	15'	400	40	32	24
S204	29' X 43'	1,221	15'	400	40	32	24
S205	29' X 43'	1,216	15'	400	40	32	24
S206	29' X 44'	1,221	15'	400	40	32	24
S207	29' X 44'	1,220	15'	400	40	32	24
S208	31' X 21'	637	13'	200	32	24	16
S209	31' X 22'	617	13'	200	24	24	16
S210	34' X 44'	1,354	13'	450	36	24	24
S211	29' X 44'	1,229	15'	400	36	32	24
S212	29' X 44'	1,230	15'	400	36	32	24
S213	29' X 44'	1,182	15'	400	36	32	24
S214	29' X 44'	1,181	15'	400	36	32	24
S215	29' X 44'	1,230	15'	400	36	32	24
S216	29' X 44'	1,233	15'	400	36	32	24
S217	31' X 21'	639	13'	200	36	20	16
S218	31' X 22'	622	13'	200	24	20	16
S219	45' X 95'	4,228	18'	1,400	100	80	72
S220	45' X 97'	4,194	18'	1,400	92	76	72
S221	44' X 97'	4,216	18'	1,400	92	76	72
S222	60' X 97'	5,599	18'	1,850	108	84	72
S223	61' X 97'	5,680	18'	1,850	108	84	72
S224	45' X 52'	2,296	18'	750	56	36	40
S225	45' X 52'	2,245	18'	750	56	36	40
S226	44' X 52'	2,240	18'	750	56	36	40
S227	45' X 52'	2,245	18'	750	56	36	40
S228	56' X 52'	2,781	18'	900	68	56	40
S229	45' X 66'	2,937	18'	950	68	52	48
S230	44' X 66'	2,868	18'	950	68	52	48
S231	45' X 66'	2,876	18'	950	68	52	48
S232	45' X 66'	2,882	18'	950	68	52	48
S233	76' X 66'	4,921	18'	1,600	100	80	64

SERVICES AND POLICIES

The Las Vegas Convention and Visitors Authority can help you plan the perfect gathering, from obtaining room blocks to facility recommendations. The following services are available to corporate meeting planners, association executives and convention executives:

- Site inspection arrangements
- Facility and contact information
- Local supplier information
- Promotion assistance
- Press releases/press kits
- Black-and-white photographs
- Color slides/transparencies
- Slides of city attractions
- City promotional video
- Visitor brochures, guides
- Maps
- Calendar of events
- Calendar of shows and entertainment
- Special events assistance
- Pre- and post-convention tours information
- Convention/trade show coordination
- Registration assistance
- Off-site banquet planning assistance
- Office space for meeting planners

For additional information about lodging, transportation, attractions, shows and events, or to view Las Vegas maps, visit www.VisitLasVegas.com.

EXHIBIT HALLS

Minimum rate versus \$.33 per net square foot, whichever is greater, per individual hall, per show day when used for commercial exhibits. Total number of move in/move out days is equal to one times the number of show days at no charge. Additional move in/out days are priced at 50 percent of the charged rental rate of hall. One-half normal illumination will be allowed for move in and move out days. Additional lighting, heating and air conditioning requested by the Lessee will be assessed a charge based on actual usage during move in/move out.

LOBBIES AND CONCOURSE

Lobbies and foyer areas are public domain areas and are to be used for ingress/egress. Leased commercial booths or manned publication booths are not allowed.

MEETING ROOMS

If available, meeting-room charges are based on 10 complimentary meeting rooms per 100,000 square feet of exhibit space used for halls N1–N4 and C1–C5. Meeting rooms for exhibit halls S1–S4 are assigned. When meeting rooms are used for exhibits or subleased, additional charges will apply. One-time setup per day includes custodial (except when used for offices or exhibit space), lights, heat, air and sound service. Changeovers and revised room setups will be charged a daily room rate. Refer to Exhibit A of lease for all other charges.

CENTERPLATE 702-943-6779

As the exclusive hospitality partner to the Las Vegas Convention Center, Centerplate is proud to offer full-service catering, pop-up and fixed retail dining, themed lounges, cafes and restaurants to meet the needs of our planners, exhibitors and guests.

Our dedicated event professionals are committed to making the time you spend with us more enjoyable and more valuable. Please contact us about your next event.

EXHIBITOR HOSPITALITY

Centerplate can help you do more on the floor!

Make your brand a destination with our exhibitor services designed to perk up your meetings or drive traffic to your booth.

- Need an in-booth café and espresso setup to capture attention and keep your clients fueled?
- How about catering or boxed meals to make sure that your event team isn't going hungry?

From engaging after-hours receptions to easy ordering of delicious meals for clients and staff, the Centerplate team is dedicated to Making It Better To Be There®. Contact our exhibitor sales team at exhibitorcateringlvcc@centerplate.com or order online: lvcvalexpresscatering.ezplanit.com.

RECEPTIONS, BANQUETS & BEYOND

Share your good taste with the world! This is your moment to make an impression, and our world-class culinary team and service professionals are here to help you shine. Craft a memorable event, with delicious, fun and inviting service and menus. Our catering and event managers specialize in getting it just right. Since it's Las Vegas, that means a wealth of possibilities: showstopping buffets, elegant banquets, fun cocktail receptions – for breakfast, lunch, dinner or anything in between. Contact us today for a portfolio of events and options.

SPONSORSHIP AND BRAND ACTIVATION

Want to go beyond the expected? How about a branded restaurant, right on the show floor? Or a sponsored program to add impressions and maximize exposure? We help you become part of the experience with marketing and sponsorship opportunities that extend beyond the booth to engage guests for a lasting connection. Give our event sales team a call today to explore the possibilities.

RESTAURANTS, CAFES AND RETAIL DINING

Conveniently located throughout the center in the exhibit halls, as well as two designated eat-in markets, Centerplate's dining options are casual and accessible with a tantalizing array of local and global flavors.

HIGHLIGHTS INCLUDE:

HoneySalt – Fresh and innovative farm-to-table inspired from the award-winning local restaurant by restaurateur Elizabeth Blau and Chef Kim Canteenwalla

Roy's – Asian-inspired menus featuring ramen, Korean barbecue and other specialties

Starbucks – Favorite stop for coffee, espresso, tea and bakery goods

Lucky's (Level 1, off the Center Hall Concourse) and Aces (Level 1, by South Hall entrance) each offer a variety of freshly prepared salads, grill specials, grab-and-go, bakery and snacks in a relaxed setting with ample seating.*

Additional options include Kosher foods, fresh salads, Mexican, pizza, barbecue, and more.

*Renovations for the 2017–2018 will bring new offerings.



SERVICES AND POLICIES



COX BUSINESS – ADVANCED CONVENTION SERVICES

855-519-2624
WWW.TRADESHOWS.COXHN.NET

Cox Business is the exclusive full-service provider for all data, voice and video services at the Las Vegas Convention Center (LVCC).

DATA SERVICES

Cox Business has a full array of Internet services available. We can customize a solution that fits all your specific needs for the show. From shared and dedicated high-speed Internet access (up to 10 Gbps) to special circuit needs, Cox Business will deliver a seamless network solution. Our services include best-of-class switches, hubs and cabling.

VOICE SERVICES

Stay connected throughout the show with the full suite of voice solutions from Cox Business. Process your orders directly on the spot with our single line service or leverage our Polycom conference phones to work hands free. For more robust needs, Cox Business offers ISDN and T-1 services.

VIDEO SERVICES

Complement your event with dynamic cable television service that includes a full HD lineup. Cox Business offers a variety of channels, from local broadcast, news, sports, weather and specialized programming, to keep your guests entertained.

COX BUSINESS – DIGITAL ADVERTISING

Reach convention attendees through advertising on the 14-location, digital-display network throughout the LVCC. These strategically placed monitors range in size from a 55" monitor to our 14' x 22' grand lobby display.

Optimize our network:

- Wholesale/Retail Models
- Creative Services
- Interactive Features
- Social Network Feeds
- Exhibitor Ads
- Mobile Applications
- Sponsorship Recognition

FEDEX OFFICE 702-733-2898

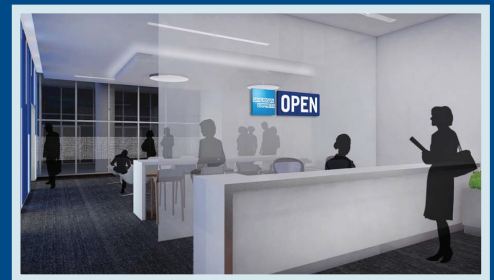
FedEx Office is the leader in document management, production and fulfillment services to the Convention and Hospitality industry. With the broadest range of digital document production services and solution centers, FedEx Office has applied this expertise and understanding of this unique market at multiple convention properties around the world. Their experience and superior levels of quality customer service continues to set the pace.

SERVICES OFFERED BY FEDEX OFFICE AT THE LAS VEGAS CONVENTION CENTER:

- Black-and-white and color full-service printing and copying
- Office supplies
- Coat and bag check
- Scooter and wheelchair rental
- Computer work station rental with Internet access and printing capabilities
- Laptop stations with Internet access and printing capabilities

- Fax service – inbound and outbound
- Office equipment rental
- Packing services and supplies
- Shipping with FedEx Express and FedEx Ground (up to 150 pounds)
- Desktop publishing and document creation services
- Finishing services such as binding options and lamination
- CD and DVD duplication
- Oversize printing
- U.S. Postage

Customized fliers for exhibitor kits and sales kits can be provided by FedEx Office. For assistance with this please contact them at 702-733-2898.



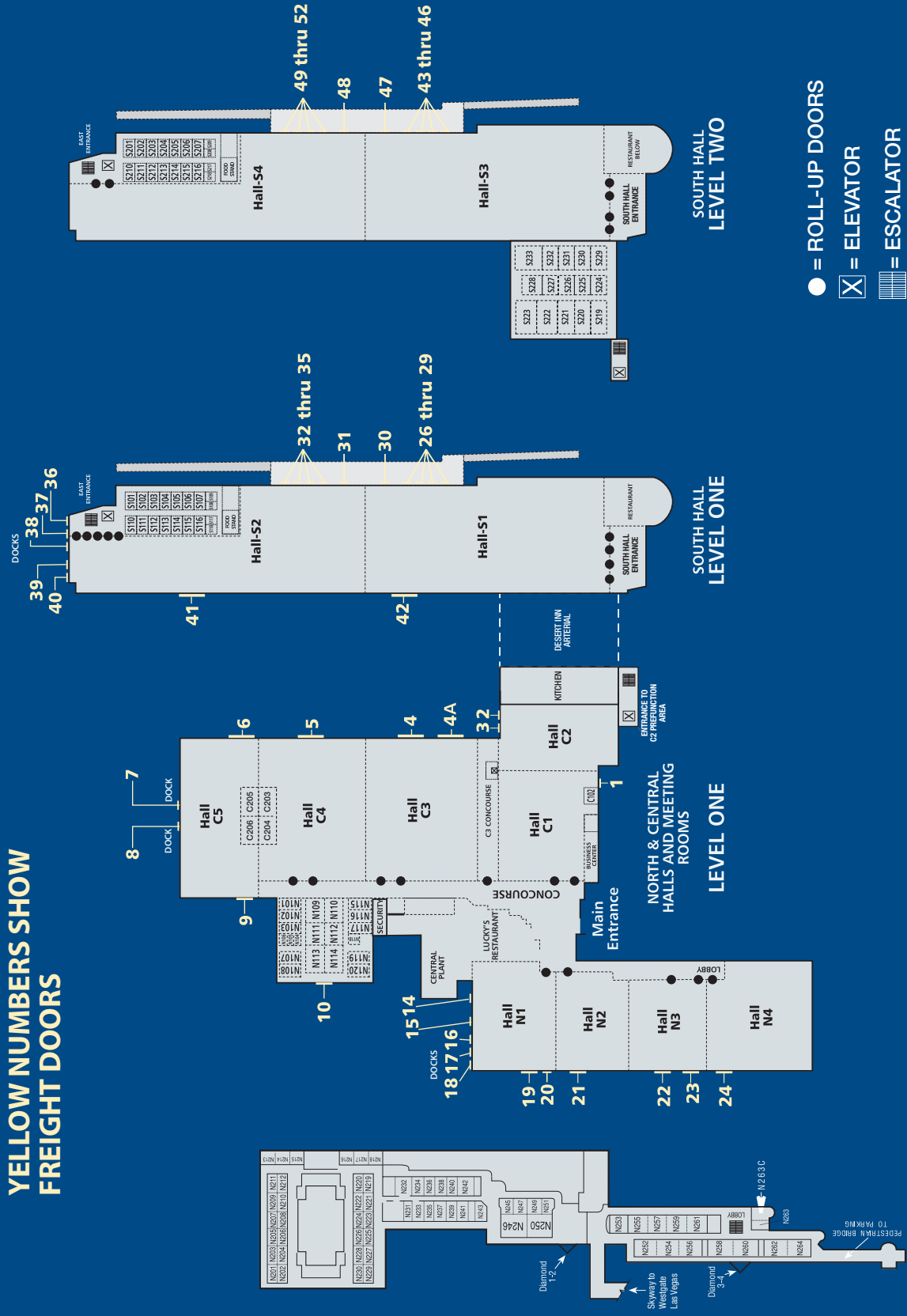
AMERICAN EXPRESS OPEN LOUNGE

American Express OPEN®, the official small-business card of the Las Vegas Convention Center, has launched the American Express OPEN Business Lounge near the main entrance to the LVCC. The lounge offers our small-business cardmembers and new applicants a quiet oasis to recharge and do business with amenities including comfortable seating, Wi-Fi, laptops, printers, coffee, tea and light snacks.

Business owners who are not cardmembers can apply for a business card from American Express OPEN card with representatives at American Express OPEN kiosks located in the lobby area of the Central, North and South halls.

FREIGHT AND ROLL-UP DOORS

YELLOW NUMBERS SHOW FREIGHT DOORS



NORTH MEETING ROOMS LEVEL TWO



LVCC PARKING LOT INFORMATION/ RATES FOR LEASABLE SPACE

PARKING LOT	PARKING LOT SQ. FOOTAGE	PARKING LOT ACREAGE (LEASABLE SPACE)	PRICE PER LOT
GOLD LOT 1A	78,300	1.8	\$2,090
GOLD LOT 1B	75,450	1.73	\$2,040
SUBTOTAL	153,750	3.53	\$4,130
GOLD LOT 2A	102,846	2.36	\$3,140
GOLD LOT 2B	90,776	2.08	\$2,510
SUBTOTAL	193,622	4.44	\$5,650
GOLD LOT 3A	106,650	2.45	\$3,270
GOLD LOT 3B	80,290	1.84	\$2,700
SUBTOTAL	186,940	4.29	\$5,970
GOLD LOT 4A	128,481	2.95	\$3,560
GOLD LOT 4B	183,046	4.2	\$4,950
SUBTOTAL	311,527	7.15	\$8,510
*GOLD 1-4 TOTAL	845,839	19.41	\$24,260
SILVER LOT 1A	104,332	2.4	\$2,750
SILVER LOT 1B	75,203	1.73	\$2,210
SUBTOTAL	179,535	4.13	\$4,960
SILVER LOT 2A	80,511	1.85	\$2,040
SILVER LOT 2B	44,041	1.01	\$1,370
SUBTOTAL	124,552	2.86	\$3,410
*SILVER 1-2 TOTAL	304,087	6.99	\$8,370
SILVER LOT 3	91,361	2.1	\$1,830
BRONZE LOT 1A	108,404	2.49	\$2,530
BRONZE LOT 1B	113,997	2.62	\$2,930
SUBTOTAL	222,401	5.11	\$5,460
BRONZE LOT 2A	110,107	2.53	\$2,830
BRONZE LOT 2B	67,183	1.54	\$1,300
SUBTOTAL	177,290	4.07	\$4,130
BRONZE LOT 3	129,820	2.98	\$3,520
*BRONZE 1-3 TOTAL	529,511	12.16	\$13,110
DIAMOND LOT 1A	359,976	8.26	\$9,700
DIAMOND LOT 1B	275,688	6.32	\$7,400
SUBTOTAL	635,664	14.58	\$17,100
DIAMOND LOT 2A	230,205	5.28	\$6,400
DIAMOND LOT 2B	181,578	4.16	\$4,000
SUBTOTAL	411,783	9.44	\$10,400
DIAMOND 1-2 TOTAL	1,004,562	23.06	\$27,500

*When lot is leased in its entirety, additional space (shown in red area on maps) is available.

*Gold Lot – additional space: 24,983 sq. feet, 11 parking spaces

*Silver Lot – additional space: 19,396 sq. feet, 7 parking spaces

*Bronze Lot – additional space: 55,917 sq. feet

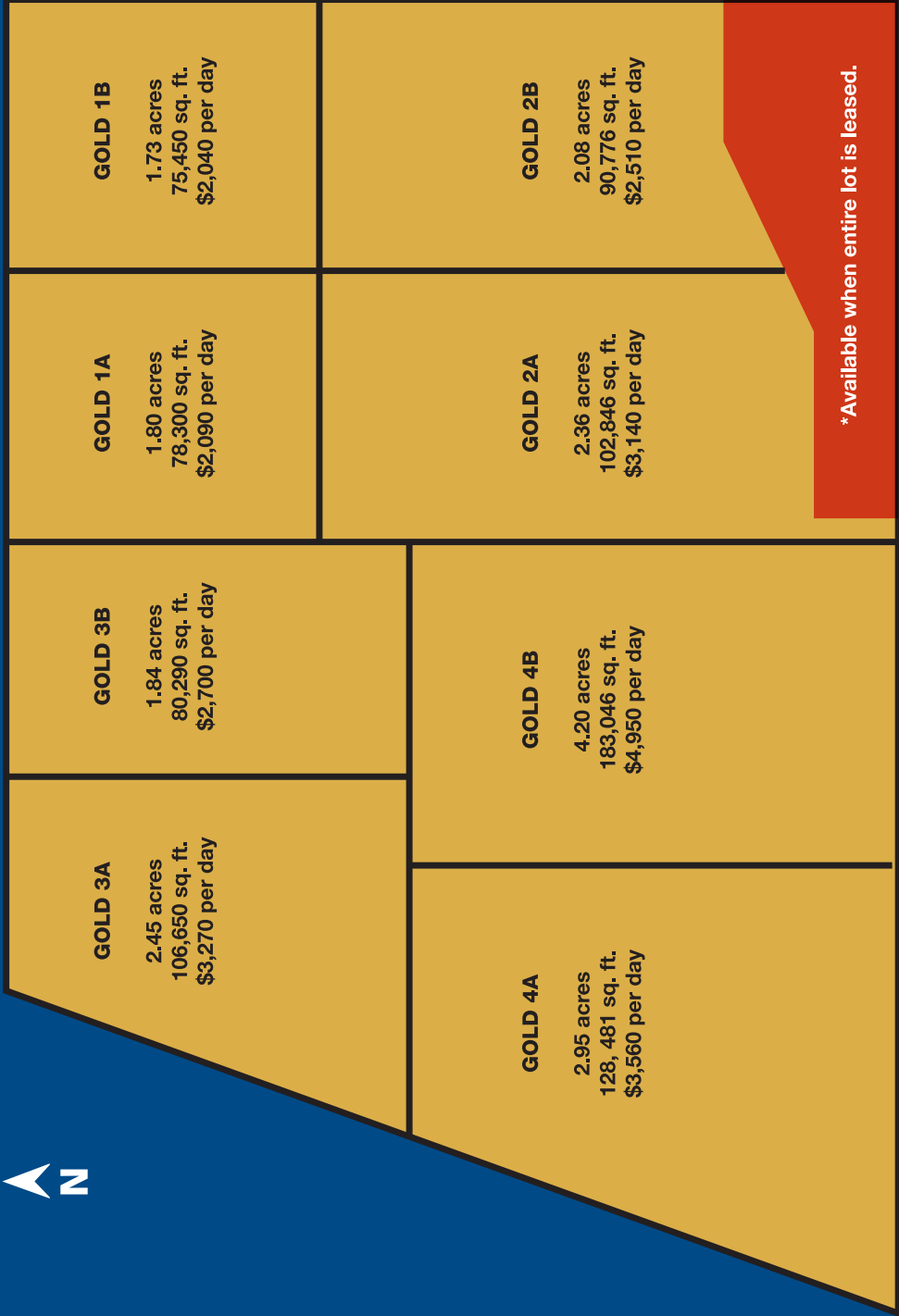
LVCC PARKING LOT INFORMATION/ RATES FOR LEASABLE SPACE

PARKING LOT	PARKING LOT SQ. FOOTAGE	PARKING LOT ACREAGE (LEASABLE SPACE)	PRICE PER LOT
PLATINUM LOT 1A	95,045	2.18	\$2,950
PLATINUM LOT 1B	96,068	2.21	\$2,050
SUBTOTAL	191,113	4.39	\$5,000
PLATINUM LOT 2A	142,351	3.27	\$3,330
PLATINUM LOT 2B	58,880	1.35	\$1,320
SUBTOTAL	201,231	4.62	\$4,650
PLATINUM LOT 3A	163,487	3.75	\$4,790
PLATINUM LOT 3B	193,699	4.45	\$3,880
SUBTOTAL	357,186	8.2	\$8,670
PLATINUM 1-3 TOTAL	749,530	17.21	\$18,320
BLUE LOT 1	67,478	1.55	\$1,740
BLUE LOT 2	44,535	1.02	\$1,100
BLUE 1-2 TOTAL	112,013	2.57	\$2,840
ORANGE LOT 1	221,603	5.09	\$3,320
ORANGE LOT 2	137,409	3.15	\$2,500
ORANGE 1-2 TOTAL	226,297	8.24	\$5,820
RED LOT	4,664	0.11	
WHITE LOT	87,940	2.02	\$1,170
PARKING LOTS TOTAL	3,955,774	93.87	\$103,220

PARKING LOT SECTOR BOUNDARY/PRICING - GOLD LOT



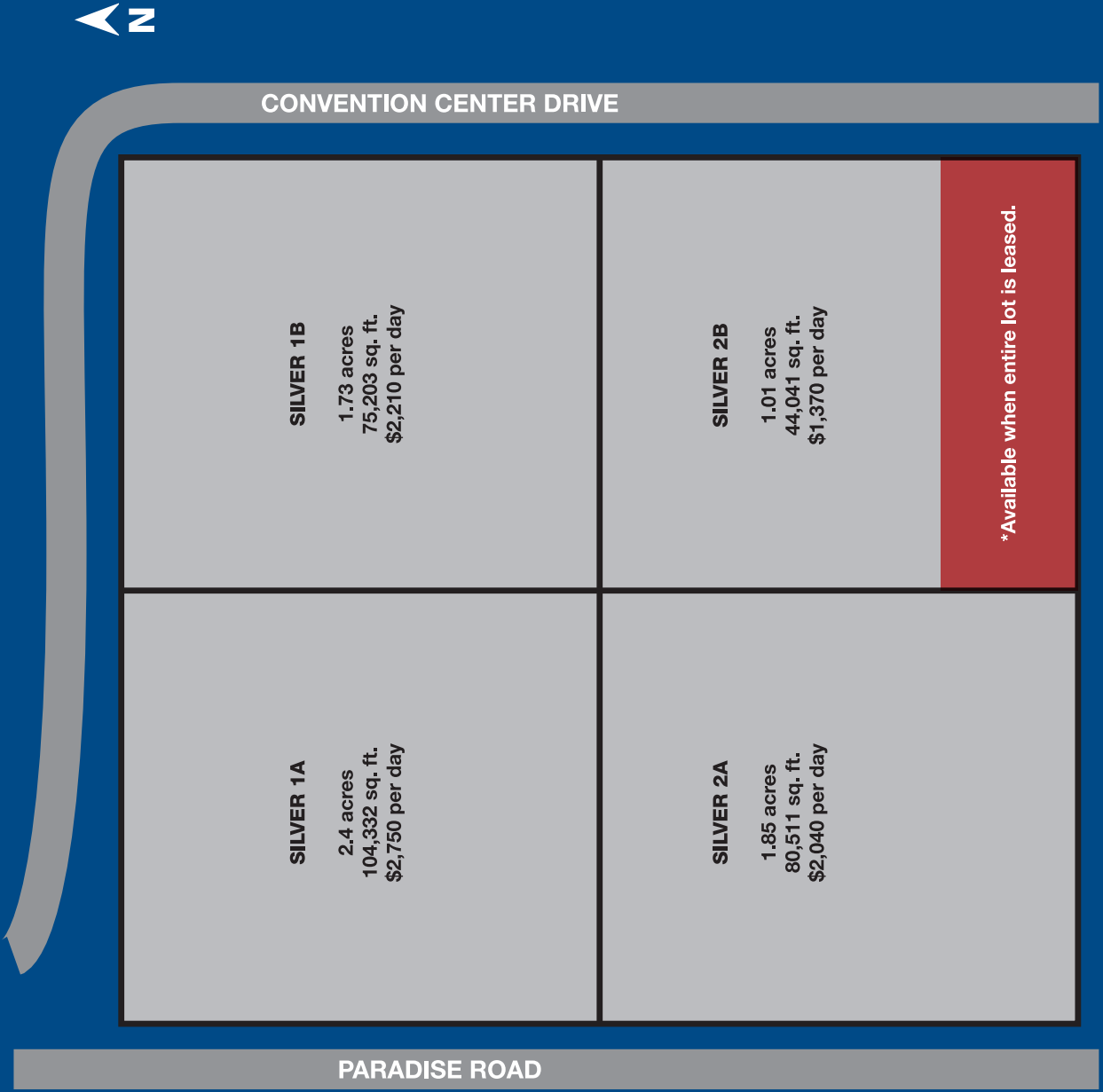
PARADISE ROAD



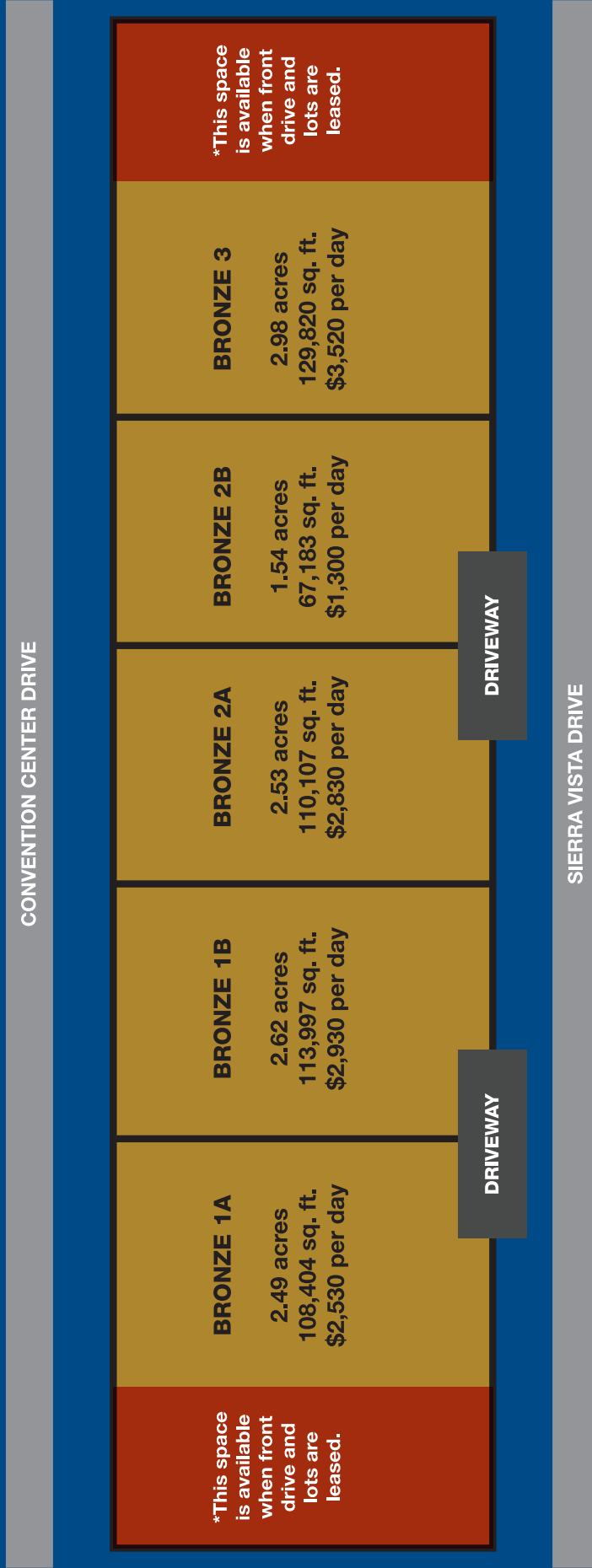
CONVENTION CENTER DRIVE



PARKING LOT SECTOR BOUNDARY/PRICING - SILVER LOT



PARKING LOT SECTOR BOUNDARY/PRICING - BRONZE LOT



*This space is available when front drive and lots are leased.

BRONZE 1A
2.49 acres
108,404 sq. ft.
\$2,530 per day

BRONZE 1B
2.62 acres
113,997 sq. ft.
\$2,930 per day

BRONZE 2A
2.53 acres
110,107 sq. ft.
\$2,830 per day

BRONZE 2B
1.54 acres
67,183 sq. ft.
\$1,300 per day

BRONZE 3
2.98 acres
129,820 sq. ft.
\$3,520 per day

*This space is available when front drive and lots are leased.

PARKING LOT SECTOR BOUNDARY/PRICING - PLATINUM LOT

