

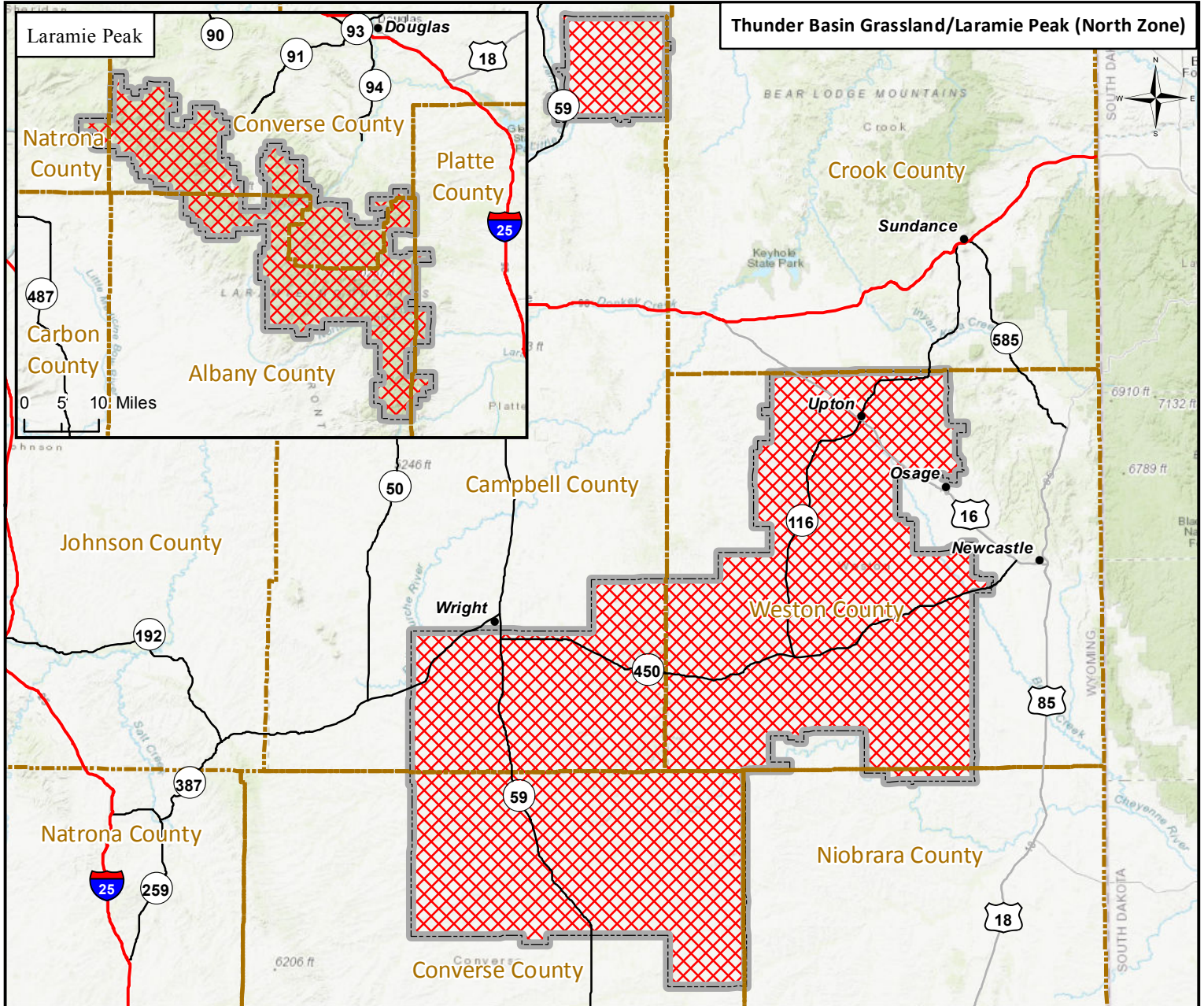


Medicine Bow - Routt National Forests and Thunder Basin National Grassland



Stage 1 Fire Restrictions (Applies to National Forest System Lands Only)

Order # MBRTB-166-2021-Stage1Fire



- City
- Interstate
- State HWY
- US HWY
- County Boundary
- Forest Boundary
- ▨ Stage 1 Restricted Area

0 10 20 40 Miles

Fire Restriction Vicinity

Wyoming Colorado

Disclaimer:
The Forest Service uses the most current and complete data it has available. GIS data and product accuracy may vary. They may be: developed from sources of differing accuracy, accurate only at certain scales, based on modeling or interpretation, incomplete while being created or revised, have represented features not in accurate geographic locations, etc. The Forest Service makes no expressed or implied warranty, including warranty of merchantability and fitness, with respect to the character, function, or capabilities of the data or their appropriateness for any user's purposes. The Forest Service reserves the right to correct, update, modify, or replace this geospatial information based on new inventories, new or revised information, and if necessary in conjunction with other federal, state or local public agencies or the public in general as required by policy or regulation. Previous recipients of the products may not be notified unless required by policy or regulation. For more information, contact the Medicine Bow - Routt National Forests and Thunder Basin National Grassland Supervisor's Office (2468 Jackson Street, Laramie, WY 82070, 307-745-2300).

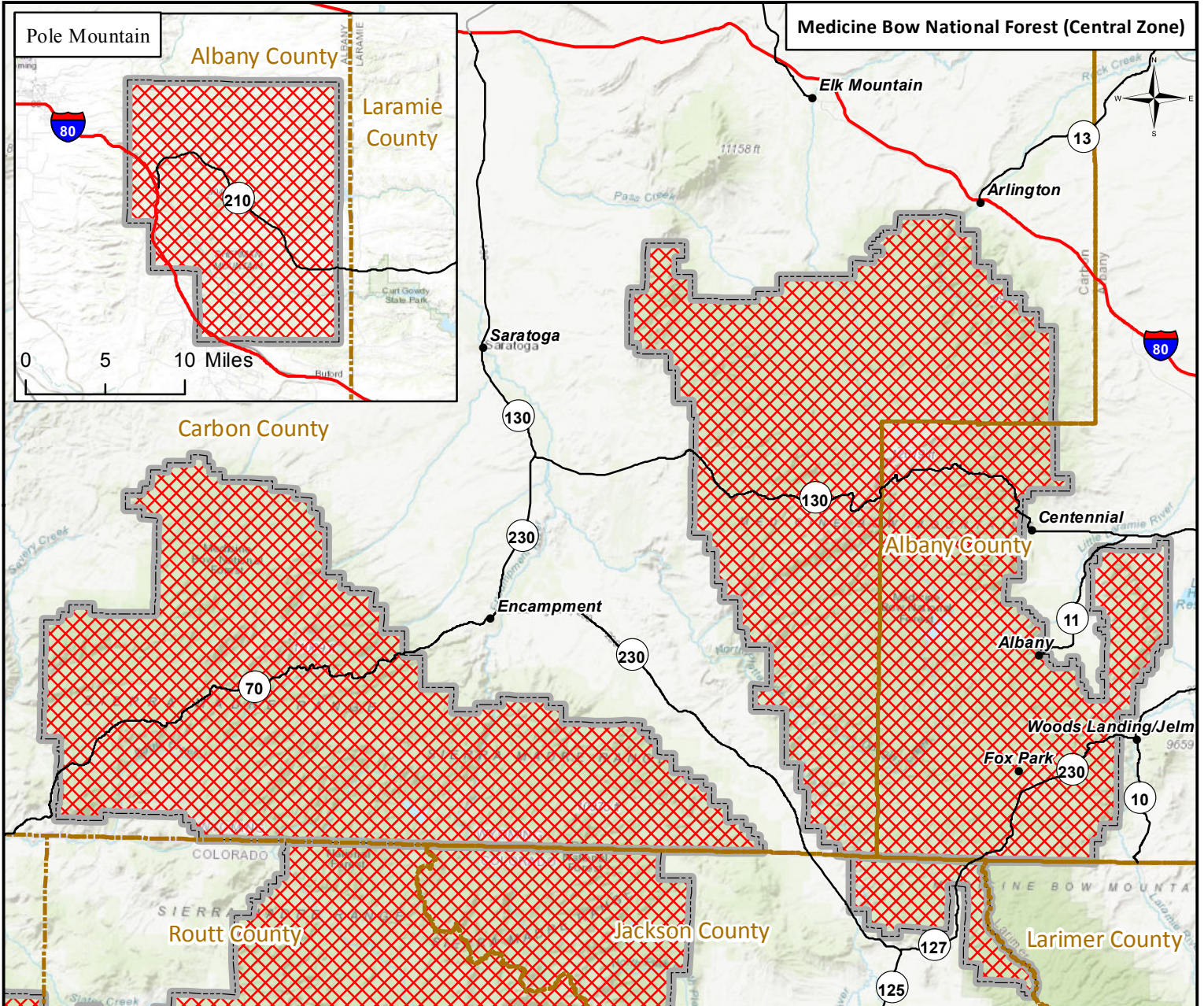


Medicine Bow - Routt National Forests and Thunder Basin National Grassland



Stage 1 Fire Restrictions (Applies to National Forest System Lands Only)

Order # MBRTB-166-2021-Stage1Fire



- City
- Interstate
- State HWY
- US HWY
- ▭ County Boundary
- ▭ Forest Boundary
- ▭ Stage 1 Restricted Area

0 5 10 20
Miles

Fire Restriction Vicinity

Wyoming Colorado

Disclaimer:
The Forest Service uses the most current and complete data it has available. GIS data and product accuracy may vary. They may be: developed from sources of differing accuracy, accurate only at certain scales, based on modeling or interpretation, incomplete while being created or revised, have represented features not in accurate geographic locations, etc. The Forest Service makes no expressed or implied warranty, including warranty of merchantability and fitness, with respect to the character, function, or capabilities of the data or their appropriateness for any user's purposes. The Forest Service reserves the right to correct, update, modify, or replace this geospatial information based on new inventories, new or revised information, and if necessary in conjunction with other federal, state or local public agencies or the public in general as required by policy or regulation. Previous recipients of the products may not be notified unless required by policy or regulation. For more information, contact the Medicine Bow - Routt National Forests and Thunder Basin National Grassland Supervisor's Office (2468 Jackson Street, Laramie, WY 82070, 307-745-2300).

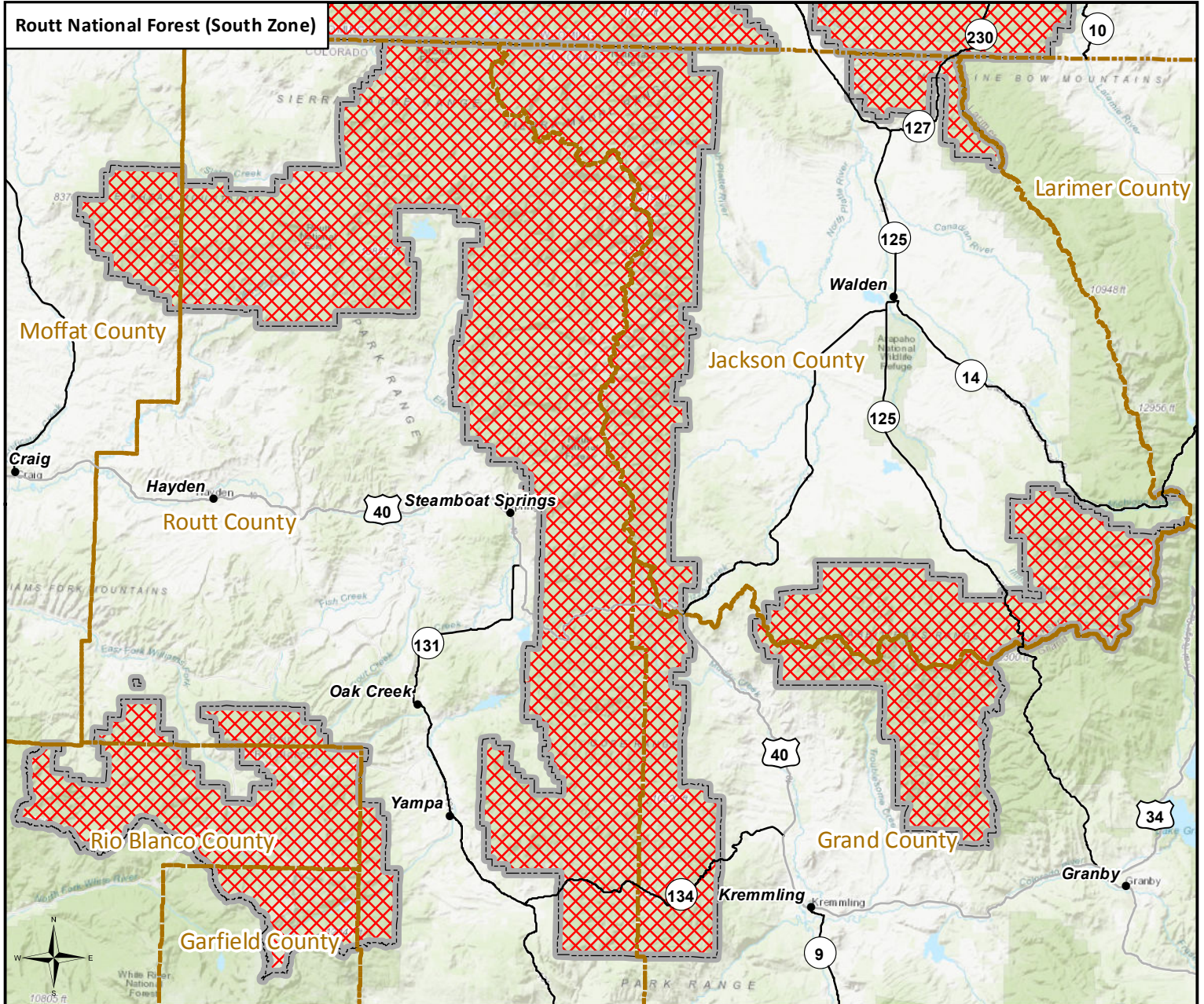


Medicine Bow - Routt National Forests and Thunder Basin National Grassland



Stage 1 Fire Restrictions (Applies to National Forest System Lands Only)

Order # MBRTB-166-2021-Stage1Fire



• City	0 5 10 20 Miles	
— Interstate		
— State HWY		
— US HWY		
▭ County Boundary		
▭ Forest Boundary		
▭ Stage 1 Restricted Area		

Disclaimer:
 The Forest Service uses the most current and complete data it has available. GIS data and product accuracy may vary. They may be: developed from sources of differing accuracy, accurate only at certain scales, based on modeling or interpretation, incomplete while being created or revised, have represented features not in accurate geographic locations, etc. The Forest Service makes no expressed or implied warranty, including warranty of merchantability and fitness, with respect to the character, function, or capabilities of the data or their appropriateness for any user's purposes. The Forest Service reserves the right to correct, update, modify, or replace this geospatial information based on new inventories, new or revised information, and if necessary in conjunction with other federal, state or local public agencies or the public in general as required by policy or regulation. Previous recipients of the products may not be notified unless required by policy or regulation. For more information, contact the Medicine Bow - Routt National Forests and Thunder Basin National Grassland Supervisor's Office (2468 Jackson Street, Laramie, WY 82070, 307-745-2300).