

The Eaton logo is displayed in white on a blue background. It consists of the word "EATON" in a bold, sans-serif font, with a stylized dot between the 'A' and 'O'.The Cutler-Hammer logo is displayed in white on a blue background. It consists of the words "Cutler-Hammer" in a bold, sans-serif font.

**Illinois and Northwest Indiana
Metering Equipment**

Technical Focus TD00505001E

Servicing : Ameren UE,
Commonwealth Edison,
Ameren IP (Illinois Power Utility),
Northern Indiana and
Public Service (NIPSCO)



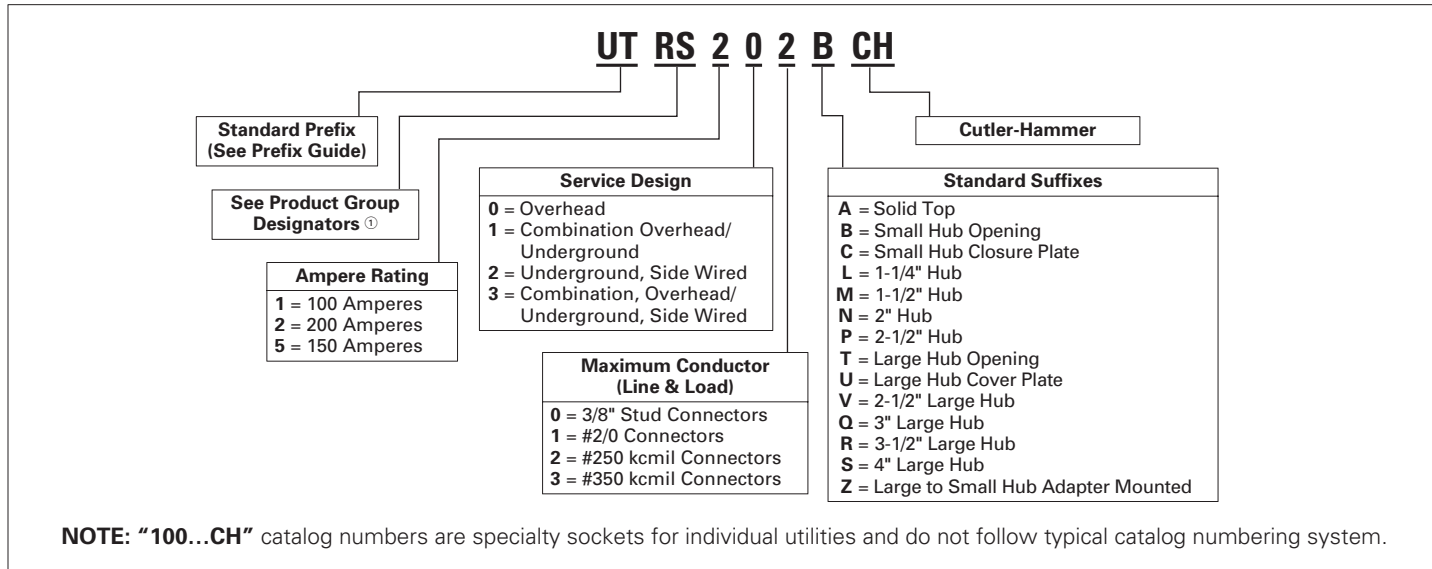
Illinois and Northwest Indiana Metering Equipment

Contents

<i>Description</i>	<i>Page</i>	<i>Description</i>	<i>Page</i>
Meter Socket		Meter Packs	
Catalog Number Logic		Product Description	12
Catalog Numbering System	2	Product Selection	12
Product Selection by Utility		Main Tenant	
Ameren UE (Union Electric & Central Illinois Public).	5	Circuit Breakers	
Commonwealth Edison	6	Product Description	14
Technical Data		Product Selection	14
Knockout Drawings	9	Dimensions and Knockouts	15
Product Selection by Utility		Accessories	
Ameren IP (Illinois Power Utility).	10	Meter Packs	17
Northern Indiana Public Service Company — NIPSCO	11	Technical Data	
		Knockout Drawings.	18

Catalog Numbering System

TABLE 1. "RS" GROUP CATALOG NUMBERING SYSTEM



① "RS" Group = Residential Service, Single Position.

Note: Some sockets that are built for specific utilities have their own unique catalog numbers. These can be found on the utility selection pages.

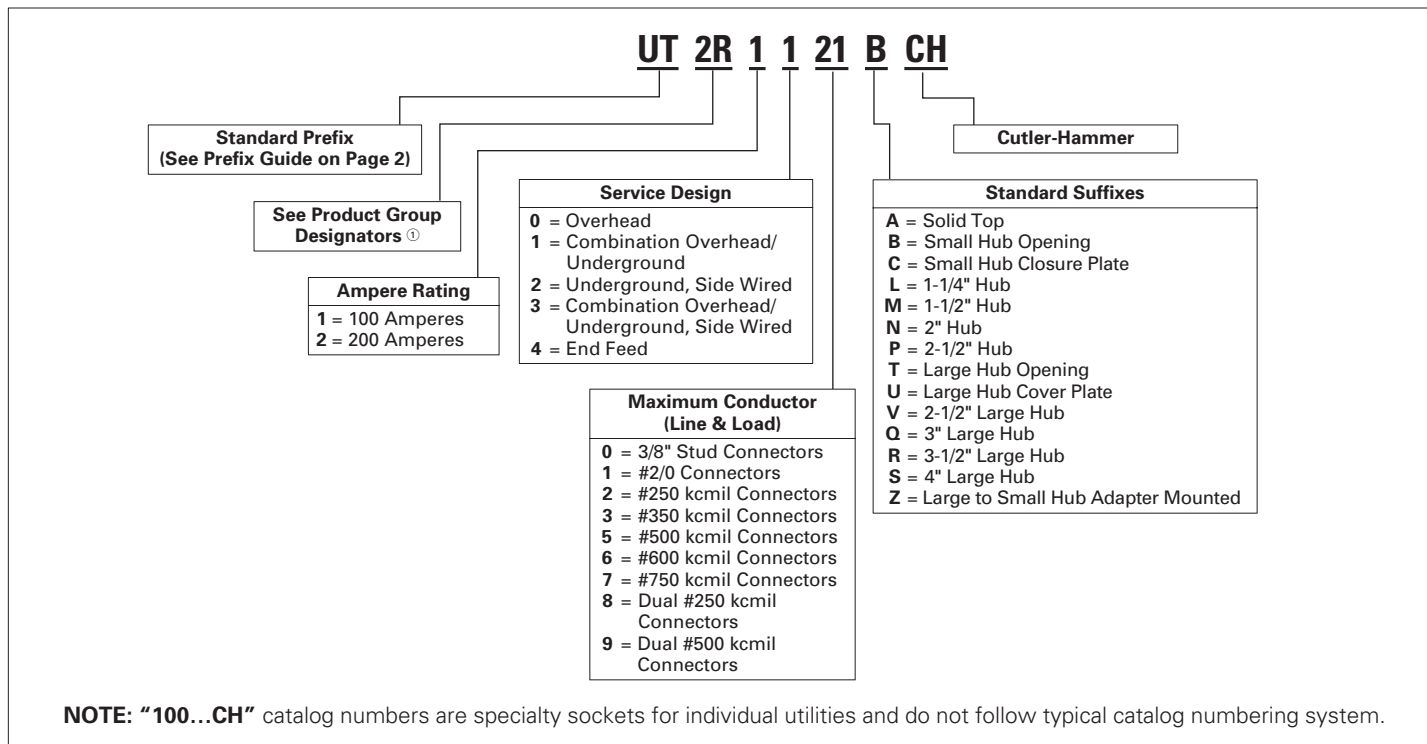
METER SOCKET "PREFIX" GUIDE

- A** = Aluminum enclosure
- B** = Barrel lock provision, for an exposed INNER-TITE® or Brooks barrel lock; unit includes an internal lock receiver bracket.
- F** = Barrel lock with guard provision, for a lock guard INNER-TITE or Brooks barrel lock; unit includes an internal lock receiver bracket.
- G** = Grounded fifth terminal (9 o'clock position)
- H** = Horn bypass
- I** = Inhibitor installed in wire connectors
- M** = Temporary meter cover (waxed cardboard)
- N** = No sealing ring (applies only to ring style sockets)
- R** = Ring style socket
- S** = Aluminum screw type sealing ring (applies only to ring style sockets)
- T** = Grounding connector (#14 – #2 Cu) for Tri-Plex ground
- TT** = Two (2) grounding connectors (#14 – #2 Cu) for Quad-Plex ground
- U** = UL® (Underwriters Laboratories) labeled
- Z** = 5/16" Hex head connector screw in place of slotted (100 amperes only)

Note: The "U" prefix is always used first followed by other prefixes required in alphabetical order.

Catalog Numbering System

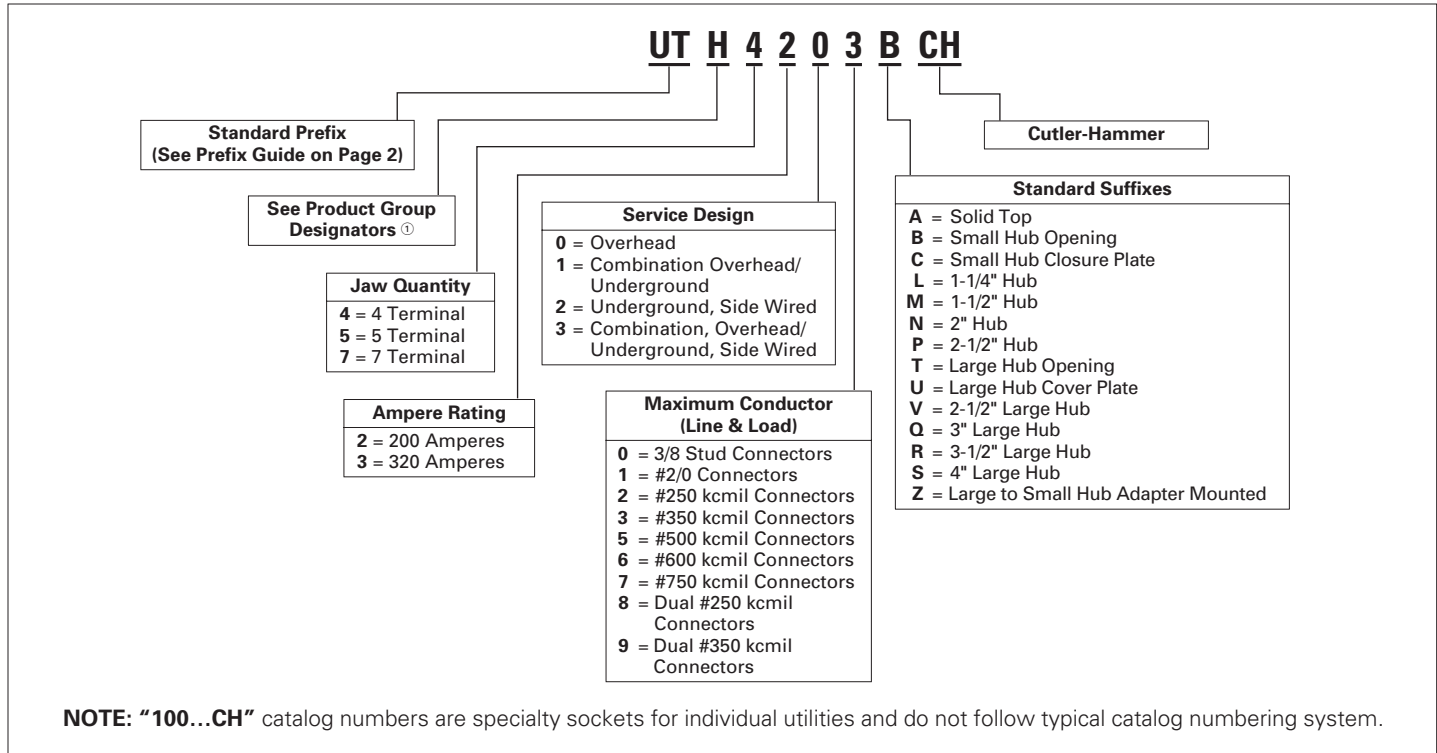
TABLE 2. "2R-6R" AND "2H-6H" GROUP CATALOG NUMBERING SYSTEM



① "2R-6R" Group = Residential Service, Multiple Position.
"2H-6H" Group = Commercial or Residential Service, Multiple Position.

Catalog Numbering System

TABLE 3. "H" GROUP CATALOG NUMBERING SYSTEM



^① "H" Group = Commercial or Residential Service, Single Position (lever bypass).

Ameren UE (Union Electric)



100 Ampere Single-Position
Meter Socket (UTRS101BCH)



320 Ampere Lever Bypass
Meter Socket (1009722CH)



200 Ampere Lever Bypass
Meter Socket (UTH7213TCH)



200 Ampere Multi-Position
Meter Socket (UT3R2332TCH)

TABLE 4. AMEREN UE APPROVED METER SOCKETS — DIMENSIONS IN INCHES

CUTLER-HAMMER CATALOG NUMBER	DESCRIPTION	DIMENSIONS			CONNECTIONS		CONCENTRIC KNOCKOUTS (SEE PAGE 18)				
		H	W	D	LINE	LOAD	1	2	3	4	5
100 – 125 Ampere Single-Position — Residential											
UTRS101BCH	125 A, 4 Terminal, SM Hub Open, OH/UG ①	10.88	8.00	3.50	#8 – 2/0	#8 – 2/0	1.50	1.50	2.00	1.25	—
200 Ampere Single-Position — Residential											
UTRS202BCH	200 A, 4 Terminal, SM Hub Open, OH ①	14.00	8.00	4.38	#8 – 250 kcmil	#8 – 250 kcmil	2.50	2.50	2.50	—	.50
UTRS213BCH	200 A, 4 Terminal, SM Hub Open, OH/UG ①	15.00	11.00	4.38	#8 – 350 kcmil	#8 – 350 kcmil	2.50	2.50	2.50	2.50	.50
UTRS223ACH	200 A, 4 Terminal, Solid Top, UG, Offset ①	13.00	13.00	5.00	#8 – 350 kcmil	#8 – 350 kcmil	2.50	2.50	3.00	2.50	.50
320 Ampere Commercial — Residential w/ Lever Bypass											
1009722CH	320 A, 4 Terminal, LG Hub Cover Plate, OH/UG ①②	36.63	15.00	5.69	Dual #6 – 350 kcmil	Dual #6 – 350 kcmil	3.50	3.50	3.50	3.50	.50
200 Ampere Single-Position — Commercial w/ Lever Bypass											
UTH5213B or TCH	200 A, 5 Terminal, SM or LG Hub Open, OH/UG ①②	19.00	13.00	5.00	#6 – 350 kcmil	#6 – 350 kcmil	3.00	2.50	3.00	3.00	.50
UTH7213B or TCH	200 A, 7 Terminal, SM or LG Hub Open, OH/UG ①②	19.00	13.00	5.00	#6 – 350 kcmil	#6 – 350 kcmil	3.00	2.50	3.00	3.00	.50
100 Ampere Multi-Position Sockets — Residential											
UT2R1121BCH	100 A, 2 Position, SM Hub Open, OH/UG, Ctr Fed ①	14.13	24.31	4.50	#6 – 250 kcmil	#8 – 2/0	2.50	2.50	2.50	2.50	.50
UT3R1121BCH	100 A, 3 Position, SM Hub Open, OH/UG, Ctr Fed ①	14.13	32.47	4.50	#6 – 250 kcmil	#8 – 2/0	2.50	2.50	2.50	2.50	.50
UT4R1121BCH	100 A, 4 Position, SM Hub Open, OH/UG, Ctr Fed ①	14.13	40.63	4.50	#6 – 250 kcmil	#8 – 2/0	2.50	2.50	2.50	2.50	.50
UT5R1121BCH	100 A, 5 Position, SM Hub Open, OH/UG, Ctr Fed ①	14.13	48.78	4.50	#6 – 250 kcmil	#8 – 2/0	2.50	2.50	2.50	2.50	.50
UT6R1131BCH	100 A, 6 Position, SM Hub Open, OH/UG, Ctr Fed ①	14.13	56.94	4.50	#6 – 350 kcmil	#8 – 2/0	2.50	2.50	2.50	2.50	.50
200 Ampere Multi-Position Sockets — Residential											
UT2R2332TCH	200 A, 2 Position, LG Hub Open, OH/UG, Ctr Fed ①	14.13	24.31	5.38	#6 – 350 kcmil	#8 – 250 kcmil	2.50	2.50	3.00	2.50	.50
UT3R2332TCH	200 A, 3 Position, LG Hub Open, OH/UG, Ctr Fed ①	14.13	32.47	5.38	#6 – 350 kcmil	#8 – 250 kcmil	2.50	2.50	3.00	2.50	.50
UT4R2352TCH	200 A, 4 Position, LG Hub Open, OH/UG, Ctr Fed ①	14.13	40.63	5.38	1/0 – 500 kcmil	#8 – 250 kcmil	2.50	2.50	3.00	2.50	.75
UT5R2392TTCH	200 A, 5 Position, LG Hub Open, OH/UG, Ctr Fed ①	14.13	54.78	5.38	1/0 – 500 kcmil	#8 – 250 kcmil	2.50	2.50	3.00	2.50	.75
UT6R2392TTCH	200 A, 6 Position, LG Hub Open, OH/UG, Ctr Fed ①	14.13	62.94	5.38	1/0 – 500 kcmil	#8 – 250 kcmil	2.50	2.50	3.00	2.50	.75

① Ground connection.

② Lever bypass.

Note: “100...CH” catalog numbers are specialty sockets for individual utilities and do not follow typical catalog numbering system.

TABLE 5. CUTLER-HAMMER METER SOCKET ACCESSORIES

CUTLER-HAMMER CATALOG NUMBER	DESCRIPTION	CUTLER-HAMMER CATALOG NUMBER	DESCRIPTION
ARP00003CH1	1.00-Inch Hub — Small Opening	ARP00008CH	Small Hub Closure Plate — Aluminum
ARP00004CH12	1.25-Inch Hub — Small Opening	ARP00016CHB	Large Hub Closure Plate
ARP00005CH15	1.50-Inch Hub — Small Opening	ARP00015CHAP	Hub Adapter Plate — Large to Small
ARP00006CH2	2.00-Inch Hub — Small Opening	ARP00035CHJ	Replacement — Plug-in Fifth Terminal (R and RS Models Only)
ARP00007CH25	2.50-Inch Hub — Small Opening	ARP00039CH	Replacement Block Assembly for 100 A Sockets — 2/0 Maximum
ARP00017CH2	2.00-Inch Hub — Large Opening	ARP00048CH	Replacement Block Assembly for 200 A Sockets — 350 Maximum
ARP00018CH25	2.50-Inch Hub — Large Opening	ARP00354CH	Replacement Block Assembly for 150 A Sockets — 250 Maximum
ARP00019CH3	3.00-Inch Hub — Large Opening	ARP00129CH	#4 – 600 kcmil Lug
ARP00021CH4	4.00-Inch Hub — Large Opening	ARP00427CH	#6 – 350 kcmil Dual Lug
ARP00002CHB	Small Hub Closure Plate	ARP00119CH	#6 – 350 kcmil Lug

Commonwealth Edison



100 Ampere Single-Position
Meter Socket (1007665CH)



Instrument Rated Meter Socket
13 Terminal (USTH131A123CH)



200 Ampere Single-Position
Meter Socket (1009581CH)



200 Ampere Multi-Position
Meter Socket (1008960CH)

TABLE 6. COMMONWEALTH EDISON APPROVED METER SOCKETS — DIMENSIONS IN INCHES

CUTLER-HAMMER CATALOG NUMBER	DESCRIPTION	TERMINALS	HUB ①	BY-PASS	5TH JAW ②	DIMENSIONS			CONNECTIONS	
						H	W	D	LINE	LOAD
100 & 200 Ampere Overhead Single Meter Sockets — Single-Phase 600 V										
1007665CH	125/200 A, Ground Connector Included	4	SM Opening	Horn	ARP00035CHJ	14.00	8.00	4.38	#8 – 250 kcmil	#8 – 250 kcmil
1007666CH	200 A, Ground Connector Included	5	SM Opening	Lever	—	19.00	10.50	4.94	#8 – 350 kcmil	#8 – 350 kcmil
320 Ampere Overhead/Underground Single Meter Sockets — Single-Phase 600 V										
1007672CH	320 A, OH/UG, Ground Connector Included	4	LG Opening	Lever	ARP00326CH	36.63	15.00	5.67	3/8" Stud	3/8" Stud
200 Ampere Overhead Single Meter Socket — 3-Phase 600 V										
1007670CH	200 A, Ground Connector Included	7	LG Opening	Lever	—	19.00	13.00	5.00	#6 – 350 kcmil	#6 – 350 kcmil
100 & 200 Ampere Overhead Combination Meter Breaker Single Sockets — Single-Phase 240 V										
1009079CH	100 A with Provision for BR2100 Main Breaker ③	4	SM Opening	Horn	ARP00035CHJ	23.75	8.00	3.48	#8 – 2/0	#8 – 2/0
1009085CH	100 A with BR Type Main Breaker Installed	4	SM Opening	Horn	ARP00035CHJ	23.75	8.00	3.48	#8 – 2/0	#8 – 2/0
1009581CH	200 A with CC Type Main Breaker Installed	4	SM Opening	Horn	—	29.00	11.00	4.38	#6 – 350 kcmil	#6 – 350 kcmil
1009582CH	200 A with CC Type Main Breaker Installed with 2 Circuit BR Provision ③	4	SM Opening	Horn	—	29.38	12.00	4.38	#6 – 350 kcmil	#6 – 350 kcmil
100 Ampere Multi-Position Horizontal Meter Sockets										
1009693CH	2 Gang OH/UG	4	SM Cover Plate (2)	Horn	ARP00035CHJ ⑥	14.13	24.16	5.38	#6 – 250 kcmil	#8 – 2/0
1009694CH	3 Gang OH/UG	4	SM Cover Plate (2)	Horn	ARP00035CHJ ⑥	14.13	32.31	5.38	#6 – 250 kcmil	#8 – 2/0
1009695CH	4 Gang OH/UG	4	SM Cover Plate (2)	Horn	ARP00035CHJ ⑥	14.13	40.47	5.38	#6 – 250 kcmil	#8 – 2/0
1009696CH	5 Gang OH/UG	4	SM Cover Plate (2)	Horn	ARP00035CHJ ⑥	14.13	48.63	5.38	#6 – 250 kcmil	#8 – 2/0
1009697CH	6 Gang OH/UG	4	SM Cover Plate (2)	Horn	ARP00035CHJ ⑥	14.13	56.78	5.38	#6 – 250 kcmil	#8 – 2/0
200 Ampere Multi-Position Horizontal Meter Sockets ④⑤										
1008842CH	2 Gang with Raceway Pedestal Opening	4	LG Cover Plate	Horn	ARP00035CHJ ⑥	14.13	24.31	5.38	#6 – 350 kcmil	#8 – 250 kcmil
1008843CH	3 Gang with Raceway Pedestal Opening	4	LG Cover Plate	Horn	ARP00035CHJ ⑥	14.13	32.47	5.38	1/0 – 500 kcmil	#8 – 250 kcmil
1008844CH	4 Gang with Raceway Pedestal Opening	4	LG Cover Plate	Horn	ARP00035CHJ ⑥	14.13	40.63	5.38	1/0 – 500 kcmil	#8 – 250 kcmil
1009579CH	5 Gang with Raceway Pedestal Opening	4	LG Cover Plate (2)	Horn	ARP00035CHJ ⑥	14.13	54.78	5.38	1/0 – 500 kcmil	#8 – 250 kcmil
1009611CH	6 Gang with Raceway Pedestal Opening	4	LG Cover Plate (2)	Horn	ARP00035CHJ ⑥	14.13	62.94	5.38	1/0 – 500 kcmil	#8 – 250 kcmil
200 Ampere Multiple Horizontal Sockets ④										
1008958CH	2 Gang	4	LG Cover Plate	Horn	ARP00035CHJ ⑥	14.13	24.31	5.38	#6 – 350 kcmil	#8 – 250 kcmil
1008959CH	3 Gang	4	LG Cover Plate	Horn	ARP00035CHJ ⑥	14.13	32.47	5.38	1/0 – 500 kcmil	#8 – 250 kcmil
1008960CH	4 Gang	4	LG Cover Plate	Horn	ARP00035CHJ ⑥	14.13	40.63	5.38	1/0 – 500 kcmil	#8 – 250 kcmil
1009925CH	5 Gang	4	LG Cover Plate	Horn	—	14.13	54.78	5.38	1/0 – 500 kcmil	#8 – 250 kcmil
1009926CH	6 Gang	4	LG Cover Plate	Horn	—	14.13	62.94	5.38	1/0 – 500 kcmil	#8 – 250 kcmil

① Hub sold separately. See Page 8, Table 8.

③ For BR breakers, see Page 14, Table 19.

⑤ 54" pedestal raceway 1008845CH, 18" raceway extension 1009618CH.

② Field kit ordered separately.

④ Field reversible incoming lugs for OH or UG applications.

⑥ One kit per socket.

Note: "100...CH" catalog numbers are specialty sockets for individual utilities and do not follow typical catalog numbering system.



200 Ampere Single-Position Pedestal Meter Socket (1006388CH)



200 Ampere Two-Position Pedestal Meter Socket (1009265CH)



100 Ampere Meter Breaker Pedestal (1009078CH)



320 Ampere Meter Breaker Pedestal (1008847CH)

TABLE 6. COMMONWEALTH EDISON APPROVED METER SOCKETS — DIMENSIONS IN INCHES (CONTINUED)

CUTLER-HAMMER CATALOG NUMBER	DESCRIPTION	TERMINALS	HUB ①	BY-PASS	5TH JAW ②	DIMENSIONS			CONNECTIONS	
						H	W	D	LINE	LOAD
Pedestals										
1006388CH	100/200 Ampere Pedestal	4	Solid Top	Horn	ARP01085CH	61.00	8.97	5.00	4/0 Compression	#6 – 250 kcmil
1007680CH	18" Pedestal Extension									
1008786CH	30" Pedestal Extension									
1009265CH	2-Position 200 Ampere Meter Sockets (Vertical)	4	Solid Top	Horn	—	74.00	8.97	5.00	4/0 Compression	#6 – 350 kcmil
1007680CH	18" Pedestal Extension									
1008786CH	30" Pedestal Extension									
1008848CH	320 Ampere Pedestal	4	Solid Top	Lever	—	58.00	12.97	5.00	3/8" Studs	Dual #6 – 350 kcmil
1009023CH	18" Pedestal Extension									
1009026CH	30" Pedestal Extension									
1009845CH	3-Phase 320 Ampere Pedestal	7	Solid Top	Lever	—	—	—	—	—	—
Meter Breaker Combo Pedestals										
1008846CH	200 Ampere Pedestal with Breaker (BWH Type Disconnect Installed 25 kAIC) 2 Circuit BR Provision	4	Solid Top	Horn	—	70.00	11.00	6.00	#6 – 350 kcmil	—
1009021CH	18" Pedestal Extension									
1009024CH	30" Pedestal Extension									
1009078CH	100 Ampere Pedestal with Breaker (BR Type Disconnect Installed 10 kAIC)	4	Solid Top	Horn	—	70.00	11.00	6.00	#6 – 350 kcmil	—
1009021CH	18" Pedestal Extension									
1009024CH	30" Pedestal Extension									
1008847CH	320 Ampere with 2 – 200 A CC Type Breakers	4	Solid Top	Lever	—	58.00	12.97	5.00	3/8" Stud	—
1009022CH	18" Pedestal Extension									
1009025CH	30" Pedestal Extension									
Instrument Rated Meter Sockets										
USTH61A195CH	6 Terminal Transformer Rated Socket Single-Phase, 3-Wire	6	Solid Top	—	—	20.00	12.00	4.33	—	—
USTH81A194CH	8 Terminal Transformer Rated Socket 3-Phase, 3-Wire	8	Solid Top	—	—	20.00	12.00	4.33	—	—
USTH131A123CH	13 Terminal Transformer Rated Socket 3-Phase, 4-Wire	13	Solid Top	—	—	20.00	12.00	4.33	—	—

① Hub sold separately.

② Field kit ordered separately.

Note: "100...CH" catalog numbers are specialty sockets for individual utilities and do not follow typical catalog numbering system.

Commonwealth Edison (Continued)

TABLE 7. CONCENTRIC KNOCKOUTS FOR COMMONWEALTH EDISON — PAGE 6 AND 7, TABLE 6

CUTLER-HAMMER CATALOG NUMBER	CONCENTRIC KNOCKOUTS				
	1	2	3	4	5
100 & 200 Ampere Overhead Single Meter Sockets — Single-Phase 600 V					
1007665CH	2.50	2.50	2.50	—	.50
1007666CH	3.00	2.50	3.00	—	.50
320 Ampere Overhead/Underground Single Meter Sockets — Single-Phase 600 V					
1007672CH	3.50	3.50	3.50	3.50	.50
200 A Overhead Single Meter Socket — 3-Phase 600 V					
1007670CH	3.00	2.50	3.00	3.00	.50
100 & 200 Ampere Overhead Combination Meter Breaker Single Sockets — Single-Phase 240 V					
1009079CH	1.50	1.50	2.00	1.25	.50
1009085CH	1.50	1.50	2.00	1.25	.50
1009581CH	2.50	2.50	2.50	2.50	.50
1009582CH	2.50	2.50	2.50	2.50	.50
100 Ampere Multi-Position Horizontal Meter Sockets					
1009693CH	2.50	2.50	2.50	2.50	.50
1009694CH	2.50	2.50	2.50	3.00	.50
1009695CH	2.50	2.50	2.50	3.00	.50
1009696CH	2.50	2.50	2.50	3.00	.50
1009697CH	2.50	2.50	2.50	3.00	.50
200 Ampere Multi-Position Horizontal Meter Sockets					
1008842CH	2.50	2.50	2.50	2.50	2.50
1008843CH	2.50	2.50	2.50	2.50	2.50
1008844CH	2.50	2.50	2.50	2.50	2.50
1009579CH	2.50	2.50	2.50	2.50	2.50
1009611CH	2.50	2.50	2.50	2.50	2.50

CUTLER-HAMMER CATALOG NUMBER	CONCENTRIC KNOCKOUTS				
	1	2	3	4	5
200 Ampere Multiple Horizontal Sockets					
1008958CH	2.50	2.50	2.50	3.00	.50
1008959CH	2.50	2.50	2.50	3.00	.50
1008960CH	2.50	2.50	2.50	3.00	.50
1009925CH	—	—	—	—	—
1009926CH	—	—	—	—	—
Pedestals					
1006388CH	1.25	2.00	2.00	2.00	.50
1007680CH					
1008786CH					
1009265CH	1.25	2.00	2.00	2.00	.50
1007680CH					
1008786CH					
1008848CH	2.50	2.50	2.50	2.50	.50
1009023CH					
1009026CH					
1009845CH	—	—	—	—	—
Meter Breaker Combo Pedestals					
1008846CH	2.50	2.50	.50	.50	—
1009021CH					
1009024CH					
1009078CH	2.50	2.50	.50	.50	—
1009021CH					
1009024CH					
1008847CH	2.50	2.50	2.50	—	—
1009022CH					
1009025CH					
Instrument Rated Meter Sockets					
USTH61A195CH	1.50	1.50	1.50	1.50	.50
USTH81A194CH	1.50	1.50	1.50	1.50	.50
USTH131A123CH	1.50	1.50	1.50	1.50	.50

TABLE 8. CUTLER-HAMMER METER SOCKET ACCESSORIES

CUTLER-HAMMER CATALOG NUMBER	DESCRIPTION	CUTLER-HAMMER CATALOG NUMBER	DESCRIPTION
ARP00003CH1	1.00-Inch Hub — Small Opening	ARP00016CHB	Large Hub Closure Plate
ARP00004CH12	1.25-Inch Hub — Small Opening	ARP00015CHAP	Hub Adapter Plate — Large to Small
ARP00005CH15	1.50-Inch Hub — Small Opening	ARP00035CHJ	Replacement — Plug-in Fifth Terminal (R and RS Models Only)
ARP00006CH2	2.00-Inch Hub — Small Opening	ARP00039CH	Replacement Block Assembly for 100 A Sockets — 2/0 Maximum
ARP00007CH25	2.50-Inch Hub — Small Opening	ARP00048CH	Replacement Block Assembly for 200 A Sockets — 350 Maximum
ARP00017CH2	2.00-Inch Hub — Large Opening	ARP00354CH	Replacement Block Assembly for 150 A Sockets — 250 Maximum
ARP00018CH25	2.50-Inch Hub — Large Opening	ARP00129CH	#4 – 600 kcmil Lug
ARP00019CH3	3.00-Inch Hub — Large Opening	ARP00427CH	#6 – 350 kcmil Dual Lug
ARP00021CH4	4.00-Inch Hub — Large Opening	ARP00119CH	#6 – 350 kcmil Lug
ARP00002CHB	Small Hub Closure Plate	1007680CH	18.00-Inch Pedestal Extension (18.00" H 8.97" W 4.94" D)
ARP00008CH	Small Hub Closure Plate — Aluminum	1008786CH	30.00-Inch Pedestal Extension (30.00" H 8.97" W 4.94" D)

Note: See **Page 14** for BR and BWH type breaker offering.

Note: "100...CH" catalog numbers are specialty sockets for individual utilities and do not follow typical catalog numbering system.

Knockout Drawings

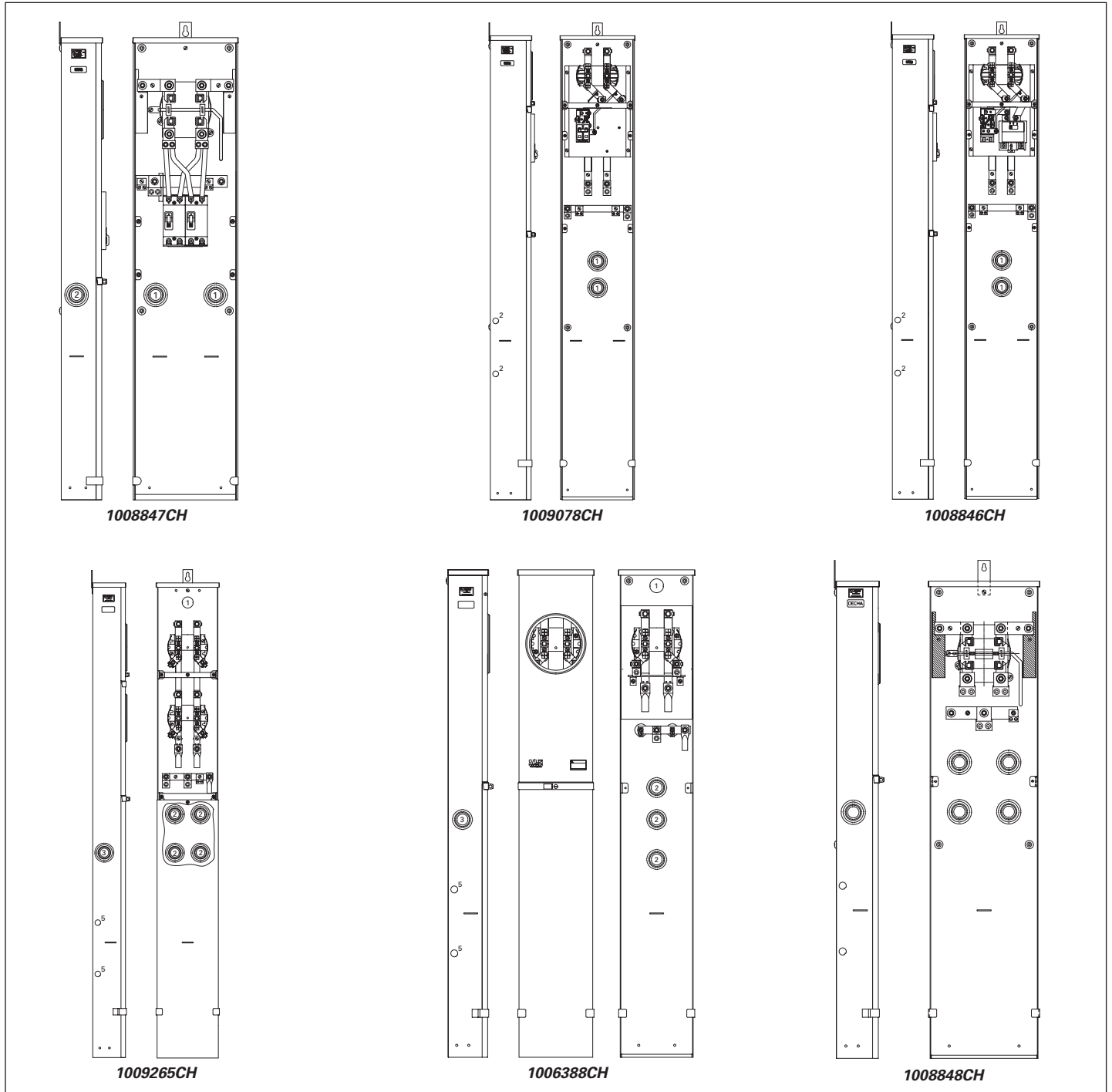
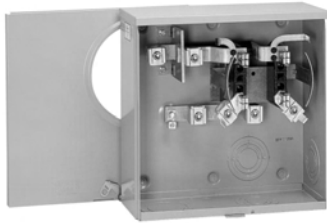


FIGURE 1. KNOCKOUT DRAWINGS — DRAWINGS NOT TO SCALE

Ameren IP (Illinois Power Utility)



200 Ampere Single-Position Offset Meter Socket (UHTRS223ACH)



320 Ampere Lever Bypass Meter Socket (UTTH4330TCH)



200 Ampere Lever Bypass Meter Socket (UTH7213TCH)



200 Ampere Multi-Position Meter Socket (UHTT3R2332TCH)

TABLE 9. AMEREN IP (ILLINOIS POWER) APPROVED METER SOCKETS — DIMENSIONS IN INCHES

CUTLER-HAMMER CATALOG NUMBER	DESCRIPTION	DIMENSIONS			CONNECTIONS		CONCENTRIC KNOCKOUTS (SEE PAGE 18)				
		H	W	D	LINE	LOAD	1	2	3	4	5
100 – 125 Ampere Single-Position — Residential											
UHTRS101BCH	125 A, 4 Terminal, SM Hub Open, OH/UG ①②	11.00	8.00	3.50	#8 – 2/0	#8 – 2/0	1.50	1.50	2.00	1.25	—
200 Ampere Single-Position — Residential											
UHTRS202BCH	200 A, 4 Terminal, SM Hub Open, OH ①②	14.00	8.00	4.38	#8 – 250 kcmil	#8 – 250 kcmil	2.50	2.50	2.50	—	.50
UHTRS223ACH	200 A, 4 Terminal, Solid Top, UG ①②	13.00	13.00	5.00	#8 – 350 kcmil	#8 – 350 kcmil	2.50	2.50	3.00	2.50	.50
UHTRS213BCH	200 A, 4 Terminal, SM Hub Open, OH/UG ①②	15.00	11.00	4.38	#8 – 350 kcmil	#8 – 350 kcmil	2.50	2.50	2.50	2.50	.50
320 Ampere Commercial — Residential w/ Lever Bypass											
UTTH4330TCH	320 A, 4 Terminal, LG Hub Open, OH/UG ①③	36.63	15.00	5.69	3/8" Stud	3/8" Stud	3.50	3.50	3.50	3.50	.50
200 Ampere Single-Position — Commercial w/ Lever Bypass											
UTH5213B or TCH	200 A, 5 Terminal, SM or LG Hub Open, OH/UG ②④	19.00	13.00	5.00	#6 – 350 kcmil	#6 – 350 kcmil	3.00	2.50	3.00	3.00	.50
UTH7213B or TCH	200 A, 7 Terminal, SM or LG Hub Open, OH/UG ②④	19.00	13.00	5.00	#6 – 350 kcmil	#6 – 350 kcmil	3.00	2.50	3.00	3.00	.50
100 Ampere Multi-Position Sockets — Residential											
UHTT2R1121BCH	100 A, 2 Position, SM Hub Open, OH/UG, Ctr Fed ①②	14.13	24.31	4.50	#6 – 250 kcmil	#8 – 2/0	2.50	2.50	2.50	2.50	.50
UHTT3R1121BCH	100 A, 3 Position, SM Hub Open, OH/UG, Ctr Fed ①②	14.13	32.47	4.50	#6 – 250 kcmil	#8 – 2/0	2.50	2.50	2.50	2.50	.50
UHTT4R1121BCH	100 A, 4 Position, SM Hub Open, OH/UG, Ctr Fed ①②	14.13	40.63	4.50	#6 – 250 kcmil	#8 – 2/0	2.50	2.50	2.50	2.50	.50
UHTT5R1121BCH	100 A, 5 Position, SM Hub Open, OH/UG, Ctr Fed ①②	14.13	48.78	4.50	#6 – 250 kcmil	#8 – 2/0	2.50	2.50	2.50	2.50	.50
UHTT6R1131BCH	100 A, 6 Position, SM Hub Open, OH/UG, Ctr Fed ①②	14.13	56.94	4.50	#6 – 350 kcmil	#8 – 2/0	2.50	2.50	2.50	2.50	.50
200 Ampere Multi-Position Sockets — Residential											
UHTT2R2332TCH	200 A, 2 Position, LG Hub Open, OH/UG, Ctr Fed ①②	14.13	24.31	5.38	#6 – 350 kcmil	#8 – 250 kcmil	2.50	2.50	3.00	2.50	.50
UHTT3R2332TCH	200 A, 3 Position, LG Hub Open, OH/UG, Ctr Fed ①②	14.13	32.47	5.38	#6 – 350 kcmil	#8 – 250 kcmil	2.50	2.50	3.00	2.50	.50
UHTT4R2352TCH	200 A, 4 Position, LG Hub Open, OH/UG, Ctr Fed ①②	14.13	40.63	5.38	1/0 – 500 kcmil	#8 – 250 kcmil	2.50	2.50	3.00	2.50	.75
UHTT5R2392TTCH	200 A, 5 Position, LG Hub Open, OH/UG, Ctr Fed ①②	14.13	54.78	5.38	1/0 – 500 kcmil	#8 – 250 kcmil	2.50	2.50	3.00	2.50	.75
UHTT6R2392TTCH	200 A, 6 Position, LG Hub Open, OH/UG, Ctr Fed ①②	14.13	62.94	5.38	1/0 – 500 kcmil	#8 – 250 kcmil	2.50	2.50	3.00	2.50	.75
400 Ampere Single-Position Sockets — Residential & Commercial											
CH8526K4	400 A, 4 Terminal, LG Closure Plate, OH/UG	36.00	18.00	6.10	3/8" Stud	3/8" Stud	4.00	4.00	4.00	3.50	.50
CH8532K7	400 A, 7 Terminal, LG Closure Plate, OH/UG	43.00	20.00	6.00	3/8" Stud	3/8" Stud	4.00	4.00	4.00	4.00	.50

① Quad plex ground connection.

② Horn bypass.

③ Lever bypass.

④ Ground connection.

TABLE 10. CUTLER-HAMMER METER SOCKET ACCESSORIES

CUTLER-HAMMER CATALOG NUMBER	DESCRIPTION	CUTLER-HAMMER CATALOG NUMBER	DESCRIPTION
ARP00003CH1	1.00-Inch Hub — Small Opening	ARP00008CH	Small Hub Closure Plate — Aluminum
ARP00004CH12	1.25-Inch Hub — Small Opening	ARP00016CHB	Large Hub Closure Plate
ARP00005CH15	1.50-Inch Hub — Small Opening	ARP00015CHAP	Hub Adapter Plate — Large to Small
ARP00006CH2	2.00-Inch Hub — Small Opening	ARP00035CHJ	Replacement — Plug-in Fifth Terminal (R and RS Models Only)
ARP00007CH25	2.50-Inch Hub — Small Opening	ARP00039CH	Replacement Block Assembly for 100 A Sockets — 2/0 Maximum
ARP00017CH2	2.00-Inch Hub — Large Opening	ARP00048CH	Replacement Block Assembly for 200 A Sockets — 350 Maximum
ARP00018CH25	2.50-Inch Hub — Large Opening	ARP000354CH	Replacement Block Assembly for 150 A Sockets — 250 Maximum
ARP00019CH3	3.00-Inch Hub — Large Opening	ARP00129CH	#4 – 600 kcmil Lug
ARP00021CH4	4.00-Inch Hub — Large Opening	ARP00427CH	#6 – 350 kcmil Dual Lug
ARP00002CHB	Small Hub Closure Plate	ARP00119CH	#6 – 350 kcmil Lug

Northern Indiana Public Service Company — NIPSCO



**200 Ampere Single-Position
Meter Socket (UHTRS213BCH)**



**200 Ampere Lever Bypass
Meter Socket (UTH7213TCH)**

TABLE 11. NIPSCO APPROVED METER SOCKETS — DIMENSIONS IN INCHES

CUTLER-HAMMER CATALOG NUMBER	DESCRIPTION	DIMENSIONS			CONNECTIONS		CONCENTRIC KNOCKOUTS (SEE PAGE 18)				
		H	W	D	LINE	LOAD	1	2	3	4	5
100 – 125 Ampere Single-Position — Residential											
UHTRS101BCH	125 A, 4 Terminal, SM Hub Open, OH ①②	10.88	8.00	3.50	#8 – 2/0	#8 – 2/0	1.50	1.50	2.00	1.25	—
200 Ampere Single-Position — Residential											
UHTRS202BCH	200 A, 4 Terminal, SM Hub Open, OH ①②	14.00	8.00	4.38	#8 – 250 kcmil	#8 – 250 kcmil	2.50	2.50	2.50	—	.50
UHTRS213BCH	200 A, 4 Terminal, SM Hub Open, UG ①②	15.00	11.00	4.38	#8 – 350 kcmil	#8 – 350 kcmil	2.50	2.50	2.50	2.50	.50
1007665CH	200 A, 4 Terminal, SM Hub Open, OH ①②	14.00	8.00	4.38	#8 – 250 kcmil	#8 – 250 kcmil	2.50	2.50	2.50	—	.50
1006388CH	200 A, 4 Terminal, Solid Top, UG, Pedestal ①③	61.00	9.00	5.00	4/0 Compression	#6 – 250 kcmil	2.50	2.50	—	—	—
320 Ampere Commercial — Residential w/ Lever Bypass											
1008191CH	320 A, 4 Terminal, LG Hub Open, OH/UG ③④	36.63	15.00	5.69	3/8" Stud	3/8" Stud	3.50	3.50	3.50	3.50	.50
1007672CH	320 A, 4 Terminal, LG Hub Open, OH/UG ①③	36.63	15.00	5.69	3/8" Stud	3/8" Stud	3.50	3.50	3.50	3.50	.50
200 Ampere Single-Position — Commercial w/ Lever Bypass											
UTH5203B or TCH	200 A, 5 Terminal, SM or LG Hub Open, OH ①③	19.00	10.50	5.00	#6 – 350 kcmil	#6 – 350 kcmil	3.00	2.50	3.00	—	.50
UTH5213B or TCH	200 A, 5 Terminal, SM or LG Hub Open, OH/UG ①③	19.00	13.00	5.00	#6 – 350 kcmil	#6 – 350 kcmil	3.00	2.50	3.00	3.00	.50
UTH7203B or TCH	200 A, 7 Terminal, SM or LG Hub Open, OH ①③	19.00	10.50	5.00	#6 – 350 kcmil	#6 – 350 kcmil	3.00	2.50	3.00	—	.50
UTH7213B or TCH	200 A, 7 Terminal, SM or LG Hub Open, OH/UG ①③	19.00	13.00	5.00	#6 – 350 kcmil	#6 – 350 kcmil	3.00	2.50	3.00	3.00	.50
1007666CH	200 A, 5 Terminal, SM or LG Hub Open, OH ①③	19.00	10.50	5.00	#6 – 350 kcmil	#6 – 350 kcmil	3.00	2.50	3.00	—	.50
1007670CH	200 A, 7 Terminal, SM or LG Hub Open, OH/UG ①③	19.00	13.00	5.00	#6 – 350 kcmil	#6 – 350 kcmil	3.00	2.50	3.00	3.00	.50
125 Ampere Multi-Position — Residential Single-Phase											
UHT2R1421CCH	125 A, 2 Position, SM Hub Closure Plate, OH/UG, End Feed ②	14.13	20.17	5.38	#6 – 250 kcmil	#8 – 2/0	3.00	2.50	2.50	2.50	.50
UHT3R1421CCH	125 A, 3 Position, SM Hub Closure Plate, OH/UG, End Feed ②	14.13	28.33	5.38	#6 – 250 kcmil	#8 – 2/0	3.00	2.50	2.50	2.50	.50
UHT4R1421CCH	125 A, 4 Position, SM Hub Closure Plate, OH/UG, End Feed ②	14.13	36.50	5.38	#6 – 250 kcmil	#8 – 2/0	3.00	2.50	2.50	2.50	.50
UHT5R1421CCH	125 A, 5 Position, SM Hub Closure Plate, OH/UG, End Feed ②	14.13	44.63	5.38	#6 – 250 kcmil	#8 – 2/0	3.00	2.50	2.50	2.50	.50
UHT6R1431CCH	125 A, 6 Position, SM Hub Closure Plate, OH/UG, End Feed ②	14.13	60.00	5.38	#6 – 250 kcmil	#8 – 2/0	3.00	2.50	2.50	2.50	.50
200 Ampere Multi-Position — Residential Single-Phase											
UHT2R2332TCH	200 A, 2 Position, LG Hub Open, OH/UG, Ctr Fed ①②	14.13	24.33	5.38	#6 – 350 kcmil	#8 – 250 kcmil	3.00	2.50	2.50	2.50	.50
UHT3R2332TCH	200 A, 3 Position, LG Hub Open, OH/UG, Ctr Fed ①②	14.13	32.50	5.38	#6 – 350 kcmil	#8 – 250 kcmil	3.00	2.50	2.50	2.50	.50
UHT4R2352TCH	200 A, 4 Position, LG Hub Open, OH/UG, Ctr Fed ①②	14.13	40.63	5.38	1/0 – 500 kcmil	#8 – 250 kcmil	3.00	2.50	2.50	2.50	.50
UHT5R2392TTCH	200 A, 5 Position, LG Hub Open, OH/UG, Ctr Fed ②⑤	14.13	54.78	5.38	1/0 – 500 kcmil	#8 – 250 kcmil	3.00	3.00	2.50	2.50	.50
UHT6R2392TTCH	200 A, 6 Position, LG Hub Open, OH/UG, Ctr Fed ②⑤	14.13	63.00	5.38	1/0 – 500 kcmil	#8 – 250 kcmil	3.00	3.00	2.50	2.50	.50

① Ground connection. ③ Lever bypass. ⑤ Quad plex ground connection.
 ② Horn bypass. ④ Anti-inversion clip factory installed.

Note: “100...CH” catalog numbers are specialty sockets for individual utilities and do not follow typical catalog numbering system.

Note: Please reference **Table 10** on **Page 10** for Cutler-Hammer Meter Socket Accessories.

Product Description

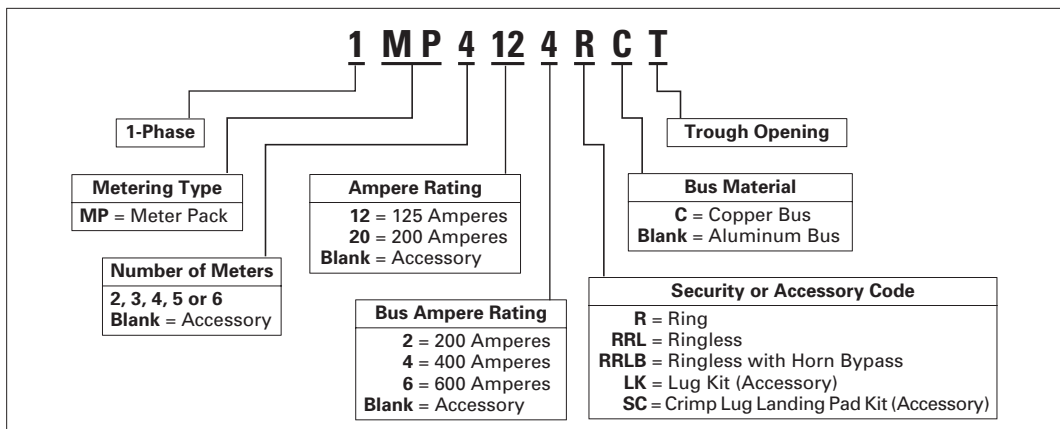


Meter Pack (1MP3124RRLBT and 1008934CH)

- Eaton's Cutler-Hammer 1MP units are self-contained (main terminal box included) for installations requiring up to six meter socket positions in a single enclosure.
- Units are not gangable with any other metering device.
- Approved by major power companies, UL listed, suitable as service equipment and meets the service and electrical requirements of EUSERC and CECHA.
- Series rating up to 100 kAIC.
- All ringless cover devices include fifth jaw as standard.
- Ring type devices do not include fifth jaw as standard. Order **1MM5JK** if needed.
- Bondable neutral.
- 120/240 Vac, single-phase, 3-wire metering device.
- Up to 600 amperes maximum horizontal bus rating.
- Incoming lugs not included (phase A, phase B, and neutral).
- Indoor/outdoor construction.
- Provision for 2-pole breaker (plug-on type for 125 ampere sockets and bolt-on type for 200 ampere sockets) — circuit breakers not included.
- Underground incoming feed.
- Aluminum or copper bus.

Product Selection

TABLE 12. METER PACK CATALOG NUMBERING SYSTEM



When Ordering:

- Determine catalog number of the basic device.
- Include Lug Kit for incoming section. See **Table 16**.
- Find quantity and catalog numbers for tenant circuit breakers. (Order one breaker per socket.) See **Page 14**.
- Select required accessories. See **Page 17**.

TABLE 13. METER PACKS — ALUMINUM BUS

SOCKET AMPERE RATING	NUMBER OF METER SOCKETS	BUS AMPERE RATING	MAIN TENANT BREAKER TYPE ①	CATALOG NUMBER		
				KNOCKOUT OPENINGS	TROUGH OPENING	SEMI-FLUSH FLANGE KIT
Ringless Style Meter Socket Covers ②						
125	2	200	Plug-on Type	1MP2122RRL ③④	—	1MPSFK1
	3	400	BR_	1MP3124RRL	—	1MPSFK2
	4	400	BRH_	1MP4124RRL	—	1MPSFK2
	5	600	BRHH_	1MP5126RRL	—	1MPSFK3
	6	600	—	1MP6126RRL	—	1MPSFK3
200	2	400	Bolt-on Type	1MP2204RRL	—	1MPSFK4
	3	600	CC2_X	1MP3206RRL	—	1MPSFK5
	4	600	CHH2_H2X	1MP4206RRL	—	1MPSFK5
	5	600	CHH2_H4X	1MP5206RRL	—	1MPSFK6
	6	600	CHH_X	1MP6206RRL	—	1MPSFK6
Ringless Style Covers with Horn Bypass ②⑤						
125	2	200	Plug-on Type	1MP2122RRLB ③④⑥	—	1MPSFK1
	2	200	Plug-on Type	1MP2122RRLB3EXT ⑦	—	1MPSFK1
	3	400	BR_	1MP3124RRLB ⑥	1MP3124RRLBT ⑥	1MPSFK2
	4	400	BRH_	1MP4124RRLB ⑥	1MP4124RRLBT ⑥	1MPSFK2
	5	600	BRHH_	1MP5126RRLB ⑥	1MP5126RRLBT ⑥	1MPSFK3
	6	600	—	1MP6126RRLB ⑥	1MP6126RRLBT ⑥	1MPSFK3
200	2	400	Bolt-on Type	1MP2204RRLB ⑥	1MP2204RRLBT ⑥	1MPSFK4
	3	600	CC2_X	1MP3206RRLB ⑥	1MP3206RRLBT ⑥	1MPSFK5
	4	600	CHH2_H2X	1MP4206RRLB ⑥	1MP4206RRLBT ⑥	1MPSFK5
	5	600	CHH2_H4X	1MP5206RRLB ⑥	1MP5206RRLBT ⑥	1MPSFK6
	5	600	CHH2_H4X	1MP5206RRLB ⑥	1MP5206RRLBT ⑥	1MPSFK6
	6	600	CHH_X	1MP6206RRLB ⑥	1MP6206RRLBT ⑥	1MPSFK6

- ① See **Table 19**.
- ② Fifth jaw factory installed at 9 o'clock position.
- ③ Main lugs included. #6 – 300 kcmil. (Optional lugs are not available.)
- ④ Bottom feed only.
- ⑤ Line side lugs also included in these units. See **Table 18**.
- ⑥ CECHA approved.
- ⑦ Built at Lincoln Flex Center. Trough included.
- ⑧ Lugs included. See **Table 18** for lug sizes.

Note: See **Table 16** for Main Lug Kit Selection. See **Table 17** for Wire Sizes.

Meter Packs

TABLE 14. METER PACKS — COPPER BUS

SOCKET AMPERE RATING	NUMBER OF METER SOCKETS	BUS AMPERE RATING	MAIN TENANT BREAKER TYPE ①	CATALOG NUMBER	SEMI-FLUSH FLANGE KIT CATALOG NUMBER
Ringless Style Meter Socket Covers ②					
125	3	400	Plug-on Type	1MP3124RRLC	1MPSFK2
	4	400	BR_	1MP4124RRLC	1MPSFK2
	5	600	BRH_	1MP5126RRLC	1MPSFK3
	6	600	BRHH_	1MP6126RRLC	1MPSFK3
200	2	400	Bolt-on Type	1MP2204RRLC	1MPSFK4
	3	600	CC2_X	1MP3206RRLC	1MPSFK5
	4	600	CHH2_H2X	1MP4206RRLC	1MPSFK5
	5	600	CHH2_H4X	1MP5206RRLC	1MPSFK6
	6	600	CHH_X	1MP6206RRLC	1MPSFK6
	Ringless Style Covers with Horn Bypass ②③				
125	3	400	Plug-on Type	1MP3124RRLBC	1MPSFK2
	4	400	BR_	1MP4124RRLBC	1MPSFK2
	5	600	BRH_	1MP5126RRLBC	1MPSFK3
	6	600	BRHH_	1MP6126RRLBC	1MPSFK3
200	2	400	Bolt-on Type	1MP2204RRLBC	1MPSFK4
	3	600	CC2_X	1MP3206RRLBC	1MPSFK5
	4	600	CHH2_H2X	1MP4206RRLBC	1MPSFK5
	5	600	CHH2_H4X	1MP5206RRLBC	1MPSFK6
	6	600	CHH_X	1MP6206RRLBC	1MPSFK6

① See Table 19.

② Fifth jaw factory installed at 9 o'clock position.

③ CECHA approved.

TABLE 15. CECHA APPROVED METER SOCKET ACCESSORIES

DESCRIPTION	CATALOG NUMBER
Pedestal Trough Raceway for Underground Services ④	
36.00-Inch Pedestal Trough Raceway (36.00" H 9.00" W 4.25" D)	1008934CH
18.00-Inch Pedestal Extension	1007680CH

④ For use with meter packs with "T" trough provision.

TABLE 16. MAIN LUG KIT SELECTION — FIELD INSTALLED KITS FOR EITHER 400 OR 600 AMPERE MAIN BUS

LINE LUG AND WIRE SIZES ORDER SEPARATELY AND FIELD INSTALL	LINE LUG KIT CATALOG NUMBER ORDER THREE KITS (FOR TWO LINES AND NEUTRAL)
(1) #6 – 600 kcmil or (2) 2/0 – 250 kcmil	1MPLK1
(2) 250 – 500 kcmil	1MPLK3
(3) #4 – 300 kcmil	1MPLK4
(1) 750 kcmil	1MPLK2 ⑤
Crimp lug landing pad 250 – 750 kcmil	1MPSC1 ⑥

⑤ This lug is not UL listed.

⑥ This kit comes with three pads for two lines and neutral. Each pad will accept one or two crimp lugs. Cannot be used on 1MP2122R, RL and RLB EUSERC underground termination.

TABLE 17. WIRE SIZES — NEUTRAL AND GROUND LUGS

DESCRIPTION	WIRE SIZE, AL/CU	CATALOG NUMBER
Neutral:		
125 ampere meter pack	#6 – 2/0	—
200 ampere meter pack	#1/0 – 300 kcmil	—
Equipment Ground Bar:		
125 ampere meter pack	#14 – #2	—
200 ampere meter pack	#14 – 2/0	—
Optional Ground Bar	#6 – 2/0	1MMGBK

Note: Each stack includes a neutral and ground bar. If an extra ground bar is needed, order 1MMGBK.

TABLE 18. METER PACK WITH TROUGH LUGS

DESCRIPTION	CATALOG NUMBER
(1) #6-250 kcmil Hole and (1) 2/0 – 600 kcmil or (2) 2/0 – 250 kcmil Hole	1MP3124RRLBT
(1) #6-250 kcmil Hole and (1) 2/0 – 600 kcmil or (2) 2/0 – 250 kcmil Hole	1MP4124RRLBT
(2) 250 – 500 kcmil Holes	1MP5126RRLBT
(2) 250 – 500 kcmil Holes	1MP6126RRLBT
(2) 250 – 500 kcmil Holes	1MP2204RRLBT
(2) 250 – 500 kcmil Holes	1MP3206RRLBT
(2) 250 – 500 kcmil Holes	1MP4206RRLBT
(2) 250 – 500 kcmil Holes	1MP5206RRLBT
(2) 250 – 500 kcmil Holes	1MP6206RRLBT

Note: Lugs are included in meter packs with the trough one lug per phase.

Main Tenant and Pedestal Circuit Breakers

Product Description

1MP, 1MM and 3MM Main Tenant and Pedestal Circuit Breakers

The following Cutler-Hammer breakers are to be used on 1MP and combination meter breaker units. They are 120/240 Vac — field installed.



BR2100



CC2200



BWH2200

Product Selection

TABLE 19. 1MP, 1MM AND 3MM MAIN TENANT AND PEDESTAL CIRCUIT BREAKERS

DESCRIPTION	NUMBER OF POLES	MAIN TENANT CIRCUIT BREAKER AMPERE RATING	CATALOG NUMBER				
			10,000 AIC	22,000 AIC	25,000 AIC	42,000 AIC	100,000 AIC
Plug-on type circuit breakers used with 1MP, 1MM and 3MM 125 ampere modular metering stacks	2	60	BR260	BRH260	—	BRHH260	—
	2	70	BR270	BRH270	—	BRHH270	—
	2	80	BR280	BRH280	—	BRHH280	—
	2	90	BR290	BRH290	—	BRHH290	—
	2	100	BR2100	BRH2100	—	BRHH2100	—
	2	110	BR2110	BRH2110	—	BRHH2110	—
	2	125	BR2125	BRH2125	—	BRHH2125	—
Bolt-on type circuit breakers used with 1MP, 1MM and 3MM 200 ampere modular metering stacks	2	60	—	—	CHH2060H2X	CHH2060H4X	CHH2060X
	2	70	—	—	CHH2070H2X	CHH2070H4X	CHH2070X
	2	80	—	—	CHH2080H2X	CHH2080H4X	CHH2080X
	2	90	—	—	CHH2090H2X	CHH2090H4X	CHH2090X
	2	100	CC2100X	—	CHH2100H2X	CHH2100H4X	CHH2100X
	2	125	CC2125X	—	CHH2125H2X	CHH2125H4X	CHH2125X
	2	150	CC2150X	—	CHH2150H2X	CHH2150H4X	CHH2150X
2	175	CC2175X	—	CHH2175H2X	CHH2175H4X	CHH2175X	
2	200	CC2200X	—	CHH2200H2X	CHH2200H4X	CHH2200X	

Note: For the 1008847CH, order CC 10 kAIC breakers. Omit the “X” suffix.

TABLE 20. MAIN BREAKER SELECTION CHART

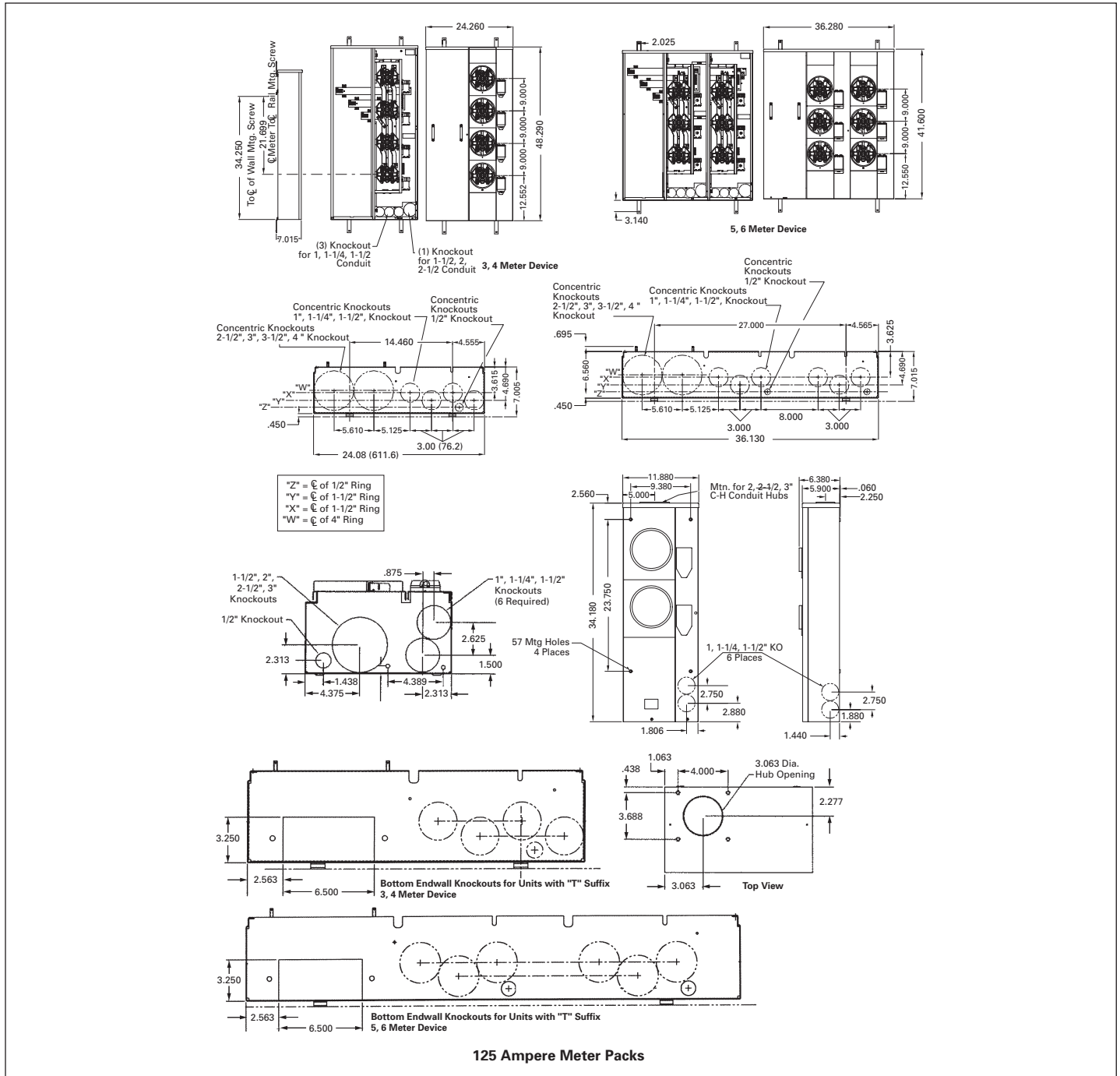
MAXIMUM AMPERE RATING	2-POLE BREAKER CATALOG NUMBER	
	10 KAIC ①	22 KAIC ①
100	BW2100	BWH2100
125	BW2125	BWH2125
150	BW2150	BWH2150
200	BW2200	BWH2200
Load Side Lug Kit for BW Breakers ②	MCBK225	

① For use with 1008846CH.

② When a provision for main is provided, order one of the main breakers listed in this table. All panels are dual labeled to accept Types BW and BWH Main Breakers.

Meter Packs

Dimensions and Knockouts (in Inches) — 1MP Meter Packs — Aluminum and Copper Bus



125 Ampere Meter Packs

FIGURE 2. 125 AMPERE MAXIMUM TENANT BREAKER

Meter Packs

Dimensions and Knockouts (in Inches) — 1MP Meter Packs — Aluminum and Copper Bus

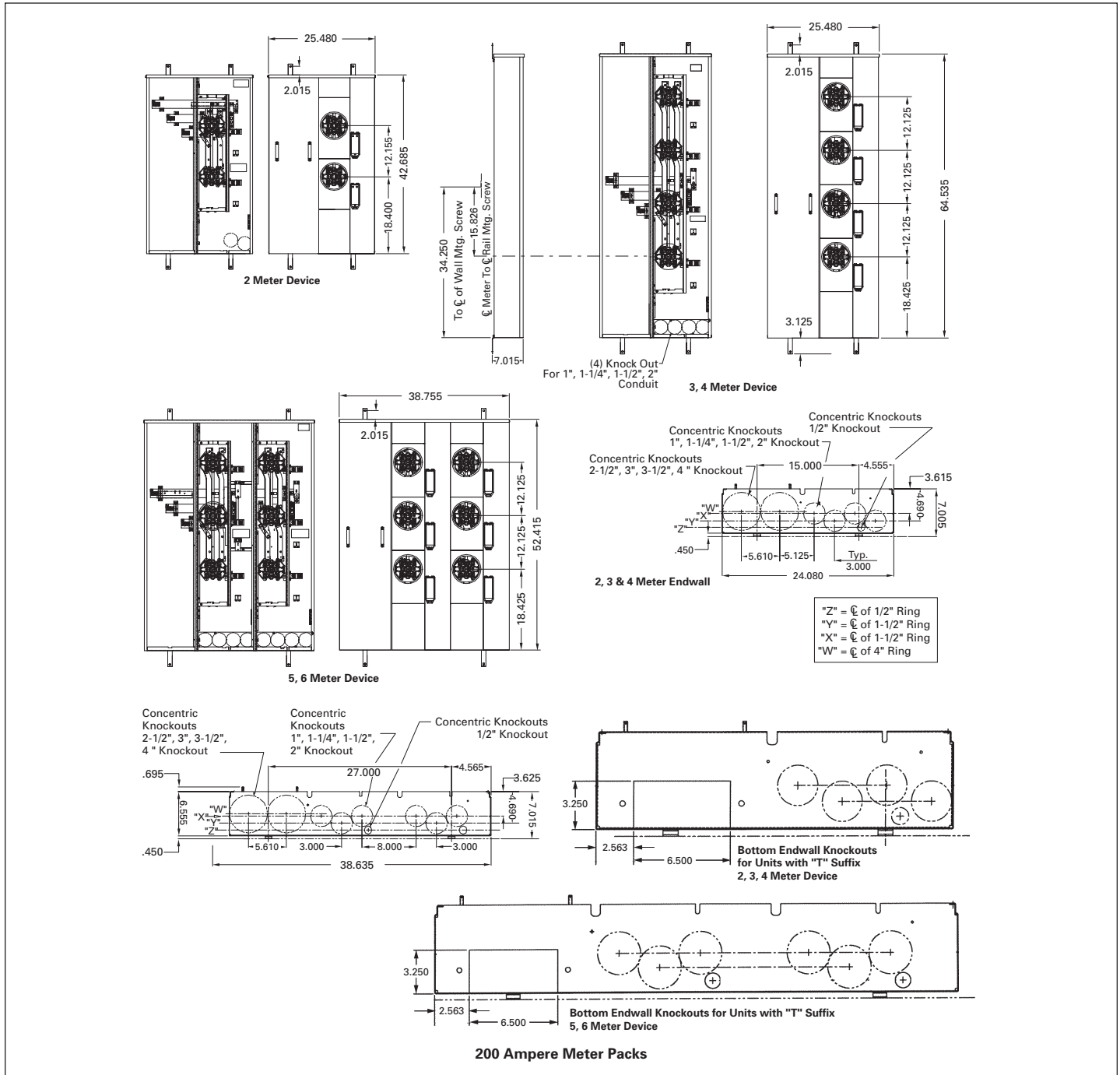


FIGURE 3. 200 AMPERE MAXIMUM TENANT BREAKER

Accessories

Meter Packs

TABLE 21. ACCESSORIES FOR 1MP METERING STACKS

DESCRIPTION	APPLICATION	CATALOG NUMBER
Fifth Jaw Kit	Bolted onto neutral in the 3, 6 or 9 o'clock position. Typically used on network metering systems (3-phase in/single-phase out) or when specified by utility company.	1MM5JK
Isolated Fifth Jaw Kit	Connects to the neutral with an insulated wire.	1MM5JKOP
Horn Bypass	Used only on ringless cover stacks, kits can be installed on 125 ampere or 200 ampere sockets. Note: For 1MP2122RRL use:	1MMBPH WCG8HB
Meter Bypass Jumper	Installed on 125 ampere or 200 ampere sockets. Jumpers are plugged into jaws. Order Lexan® cover plate with bypass jumpers to prevent access to meter socket once energized. (Not UL listed.)	1MMBPJ
Lexan Blank Cover	Circular cover mounted on ring or ringless devices preventing access to meter socket while meter is not in place. Includes 4 plastic tabs which plug into each jaw.	1MMPCP
	Same as 1MMPCP minus the tabs located in the back to plug into jaws. This device to be used while meter bypass jumpers are in place (1MMBPJ).	1MMACP
Blank Meter Socket Cover	Used for 125 ampere stacks. Fits bottom socket only. Kit replaces existing meter cover preventing access to meter socket. Includes hasp for seal.	1MMBC125B
	Used on 200 ampere stacks. Fits bottom socket only. Kit replaces existing meter cover preventing access to meter socket. Includes hasp for seal.	1MMBC200B
Wall Mounting Rail	Rails are 4 feet (1.2 m) in length. Bolted on wall for stacks, packs, and mains to be hung.	1MMWB



Fifth Jaw Kit



Horn Bypass Kit



Lexan Blank Cover



Wall Mounting Rail

INNER-TITE is a registered trademark of Inner-Tite Corp. Lexan is a registered trademark of General Electric Co., USA. UL is a registered trademark of Underwriters Laboratories Inc.

Knockout Drawings

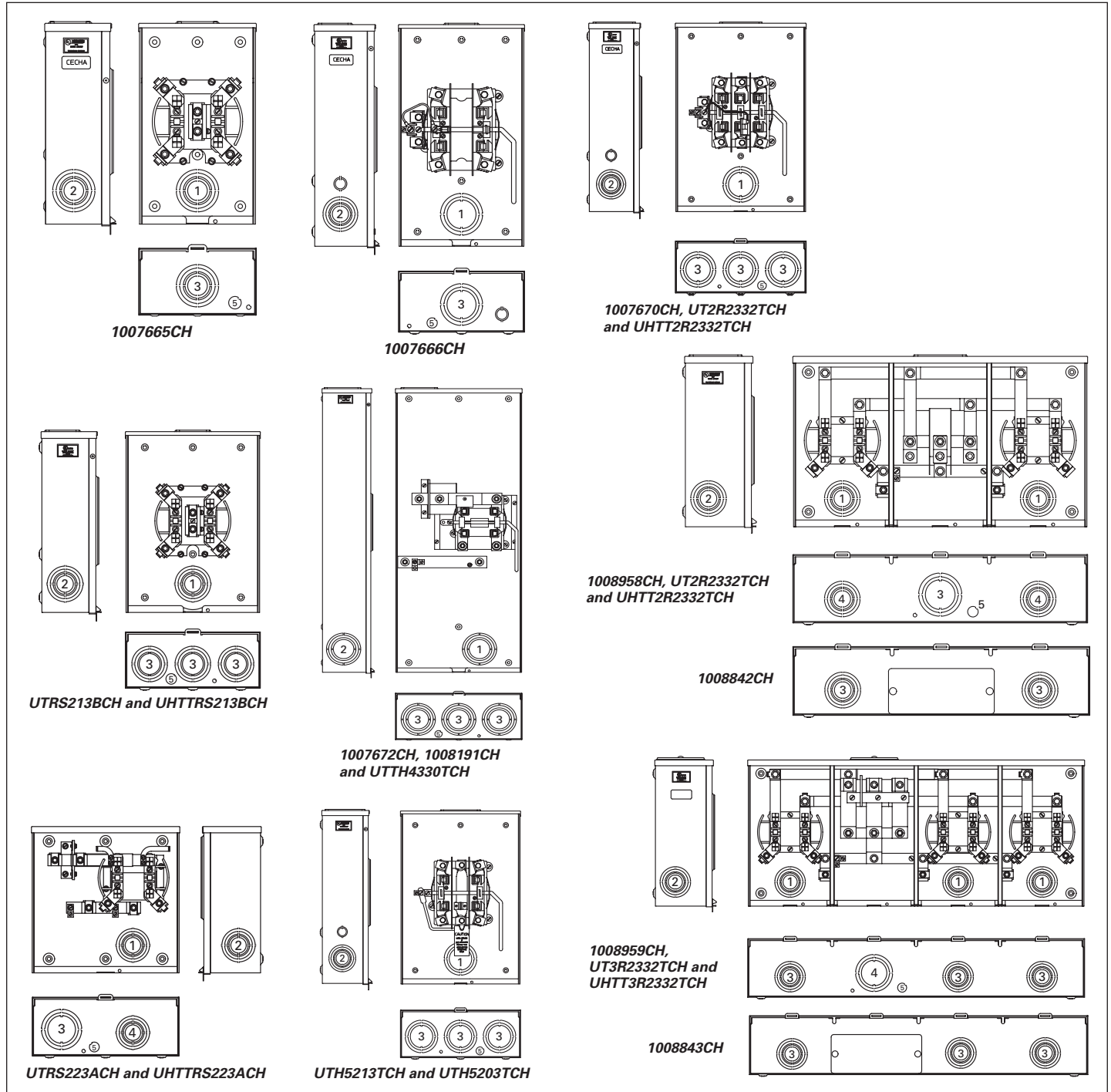


FIGURE 4. KNOCKOUT DRAWINGS — DRAWINGS NOT TO SCALE

Knockout Drawings

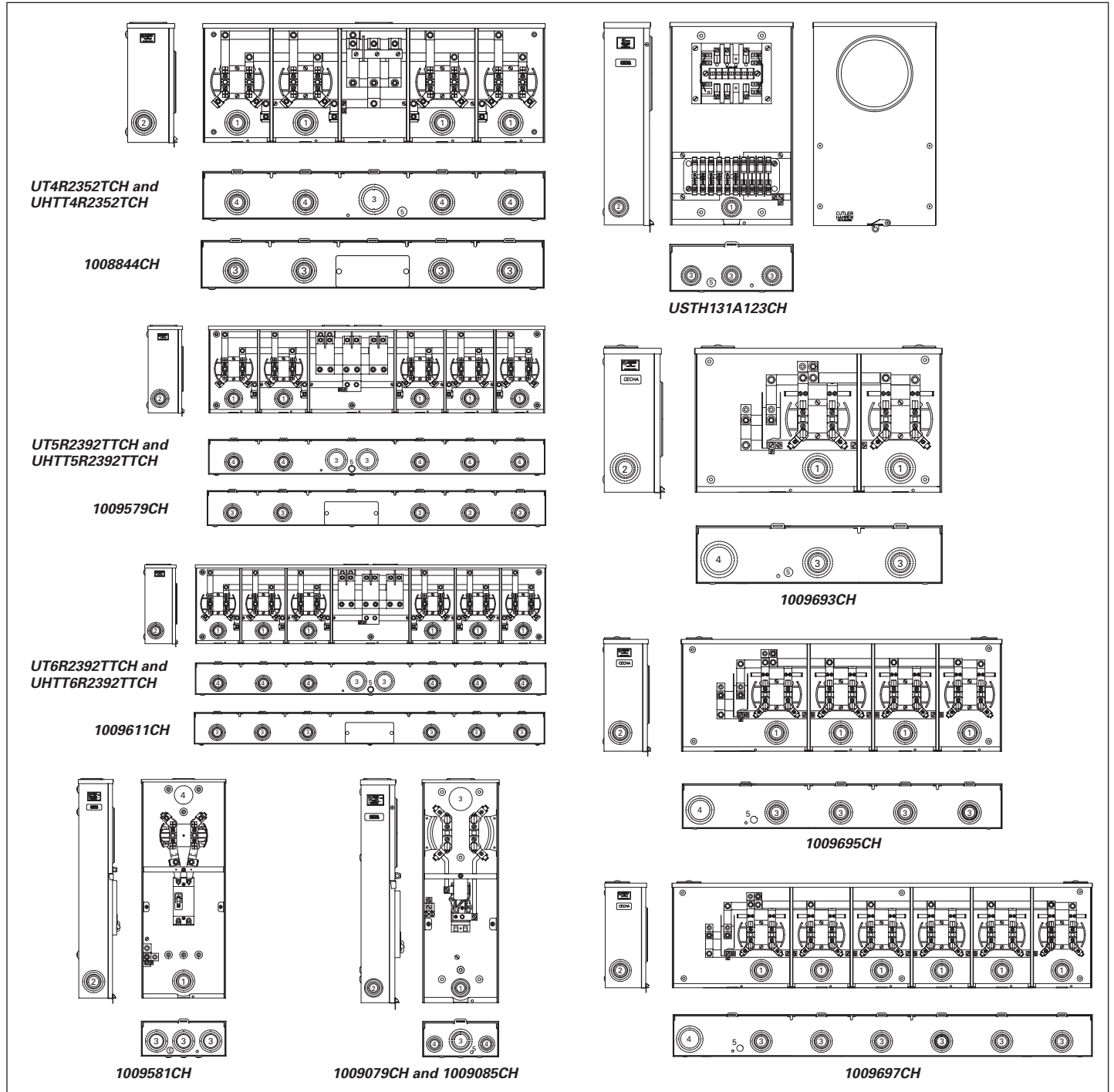


FIGURE 5. KNOCKOUT DRAWINGS — DRAWINGS NOT TO SCALE

Eaton Corporation
Electrical Group
1000 Cherrington Parkway
Moon Township, PA 15108
United States
877-ETN-CARE (877-386-2273)
Eaton.com



Cutler-Hammer

© 2007 Eaton Corporation
All Rights Reserved
Printed in USA
Publication No. TD00505001E/ Z5429
July 2007