



Arktite®

*Plugs, Receptacles,
and Connectors*

COOPER Crouse-Hinds



Arktite® Plugs, Receptacles, and Connectors

THE COOPER CROUSE-HINDS STANDARD

Put a century of standard-setting experience to work for you.

For more than a century, companies have come to rely on Cooper Crouse-Hinds for value they can trust to grow their business. By integrating a comprehensive line of reliable electrical products with expert support, industry insights, and local availability, we enhance safety and productivity in the most demanding industrial and commercial environments worldwide. This philosophy is at the core of every product we develop and every solution we engineer.

THE ARKTITE ADVANTAGE

Cooper Crouse-Hinds invented the North American pin and sleeve design over 75 years ago and it is still the predominate product of choice in the industrial marketplace today.

The Arktite name was selected to convey our innovative arc-snuffing design that enabled large power loads to be disconnected under load without causing an arc flash in the area. This was a particularly important objective in the petroleum, petrochemical, and mining industries in the early 1900's.

While many have tried to copy our field-proven, reliable designs over the years, there is no substitute for a genuine Cooper Crouse-Hinds Arktite pin and sleeve device. Many design improvements have been introduced since our original design. Each time, Cooper Crouse-Hinds has taken special care to ensure the new models would still intermate and perform properly with previous models. If you have an Arktite product that needs a mate, you can rest assure that today's model will fit and operate in any Arktite device.

TABLE OF CONTENTS

Applications	3
Standard Materials	3
Standard Finishes	3
Options	3
Features:	
Cast Aluminum	4
Nonmetallic	5
Cast Aluminum	
Arktite Products:	
30A	6
60A	8
100A	10
200A	12
400A	13
Nonmetallic	
Arktite Products:	
30A	7
60A	9
100A	11
Grounding	14
Electrical Rating Ranges	14
Dimensions	15
Replacement Parts	16
Wire Sizes	17
Typical Installation Drawing	17
Plug Catalog	
Number Logic	18
Receptacle Catalog	
Number Logic	19
Arktite Interlocked Receptacles	20

APPLICATIONS

Arktite Plugs and Receptacles are Used:

- To supply power to portable electrical equipment such as welders, motor-generator sets, compressors, conveyors, and other similar equipment.
- In applications requiring removal, adjustment, replacement, or frequent maintenance of equipment.
- In areas where dust, dirt, moisture, and corrosion are a problem.
- Indoors and outdoors in manufacturing plants, process industry facilities, and similar industrial locations.
- Where temporary power is needed, such as at trailers, building units, heavy machinery, and similar equipment.



STANDARD MATERIALS

- Metallic receptacle housing, plug, and cord connector bodies - high impact strength copper-free aluminum
- Nonmetallic receptacles, plugs, and cord connectors - Krydon® fiberglass-reinforced polyester material
- Back boxes: 30, 60, 100, and 200A - cast aluminum; 400A - Feraloy® iron alloy
- Insulation (metallic products); fiberglass-reinforced polyester
- Contacts: pressure, solder, and binding screw - brass; crimp/solder - leaded red brass; 30, 60, 100A - tellurium copper; 200, 400A - brass

STANDARD FINISHES

- Feraloy - electro-galvanized and aluminum acrylic paint
- Aluminum - natural
- Krydon - fiberglass-reinforced polyester material - (gray)
- Fiberglass-reinforced polyester insulation - (red)
- Brass - natural
- Leaded red brass - electro-tin-plate

OPTIONS

- The following special options are available from factory by adding a suffix to the Catalog Number:

Description

S22 Reversed contacts. Receptacle assembled with plug interior and plug assembled with receptacle interior. For applications where plug is energized to feed normally de-energized receptacle. Available on 30 - 400A metallic shelled units.

(Alternately, on 30, 60, and 100A units, an APR/NPR connector and APQ/NPQ motor plug can be used. See typical installation drawing on page 17). NOTE: 30, 60, and 100A interiors can be interchanged in the field using a screwdriver. Factory conversion is required for 200 and 400A products.

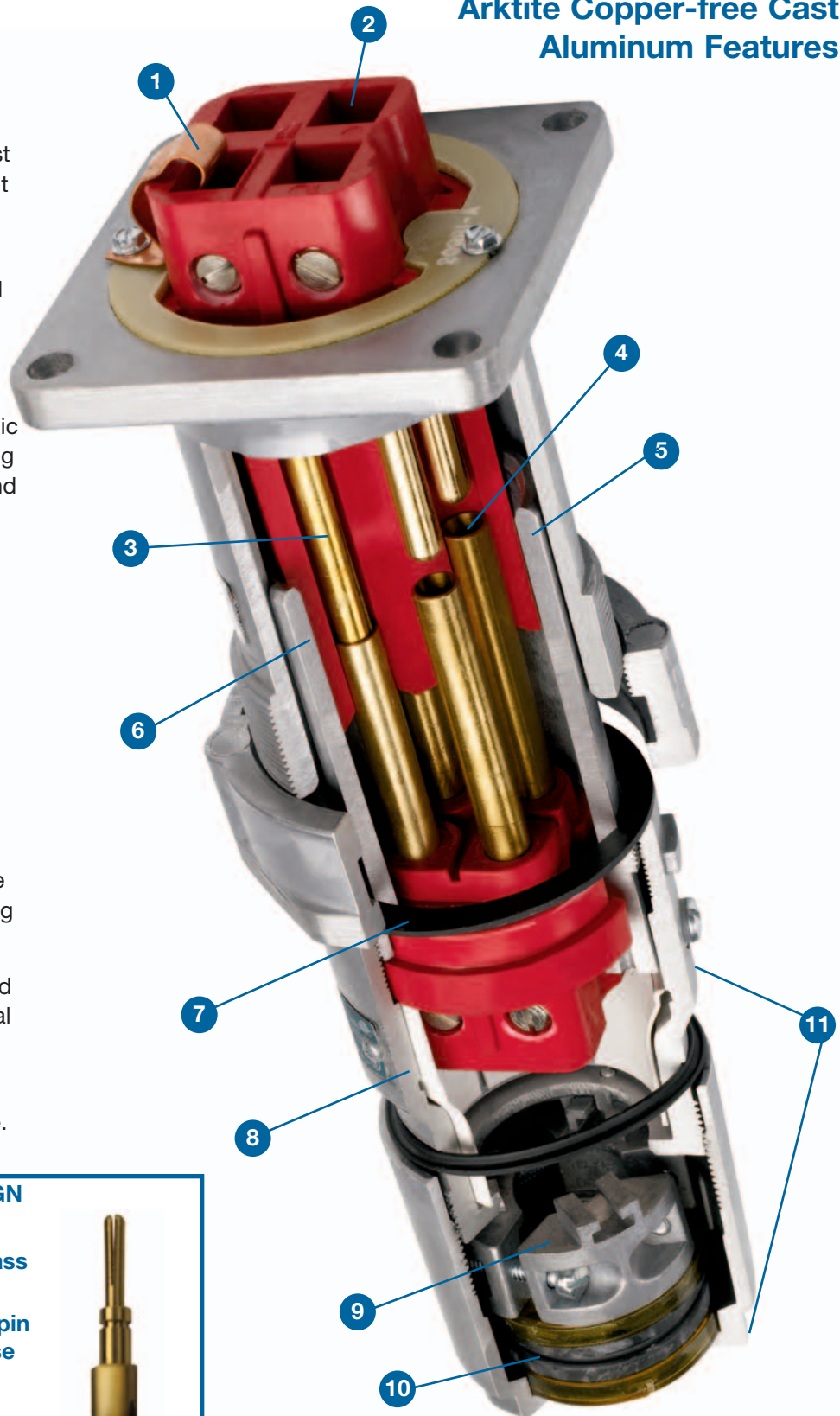
S4 Special polarity. Receptacle interior rotated 22 1/2 degrees to right and plug changed to match. For use where two or more receptacles of the same ampere rating, style, and number of poles are to be installed in the same area for use on different voltages and/or frequencies. Prevents insertion of a plug in a receptacle with different electrical rating. Available on 30 through 400A units.

S752 . . . Corro-Free™ epoxy powder finish for added corrosion resistance.

Arktite® Plugs, Receptacles, and Connectors

Arktite Copper-free Cast Aluminum Features

- 1 The ground contact is bonded to the receptacle housing (style 2).
- 2 Easy access terminals make wiring simple.
- 3 Grounding contacts that make-first and break-last in the unlikely event of keyway failure.
- 4 An arc formed when the plug is being removed is instantly snuffed in the deep confined insulated arcing chamber.
- 5 A detent spring forms a parallel grounding path through the metallic plug sleeve and receptacle housing and is the first contact to make and the last to break.
- 6 The plug sleeve is keyed to the receptacle to prevent mispolarization.
- 7 The gasketing system provides unsurpassed watertight integrity (NEMA 4).
- 8 All aluminum Uni-Shell™ construction provides superior strength in abusive environments.
- 9 The Tri-Lock™ cable grip has three clamps which provide even gripping and superior cord clamping.
- 10 The unique Sure-Seal™ cable gland provides a complete environmental seal around the cable (NEMA 4).
- 11 Wrenching surfaces make Arktite plugs quick and easy to assemble.



SPLIT PIN CONTACT DESIGN

Split-pin contacts:

- Made of high grade naval brass to ensure long life
- 360° of contact between the pin and sleeve to reduce heat rise and eliminate arcing
- Self-wiping at every insertion to prevent contamination

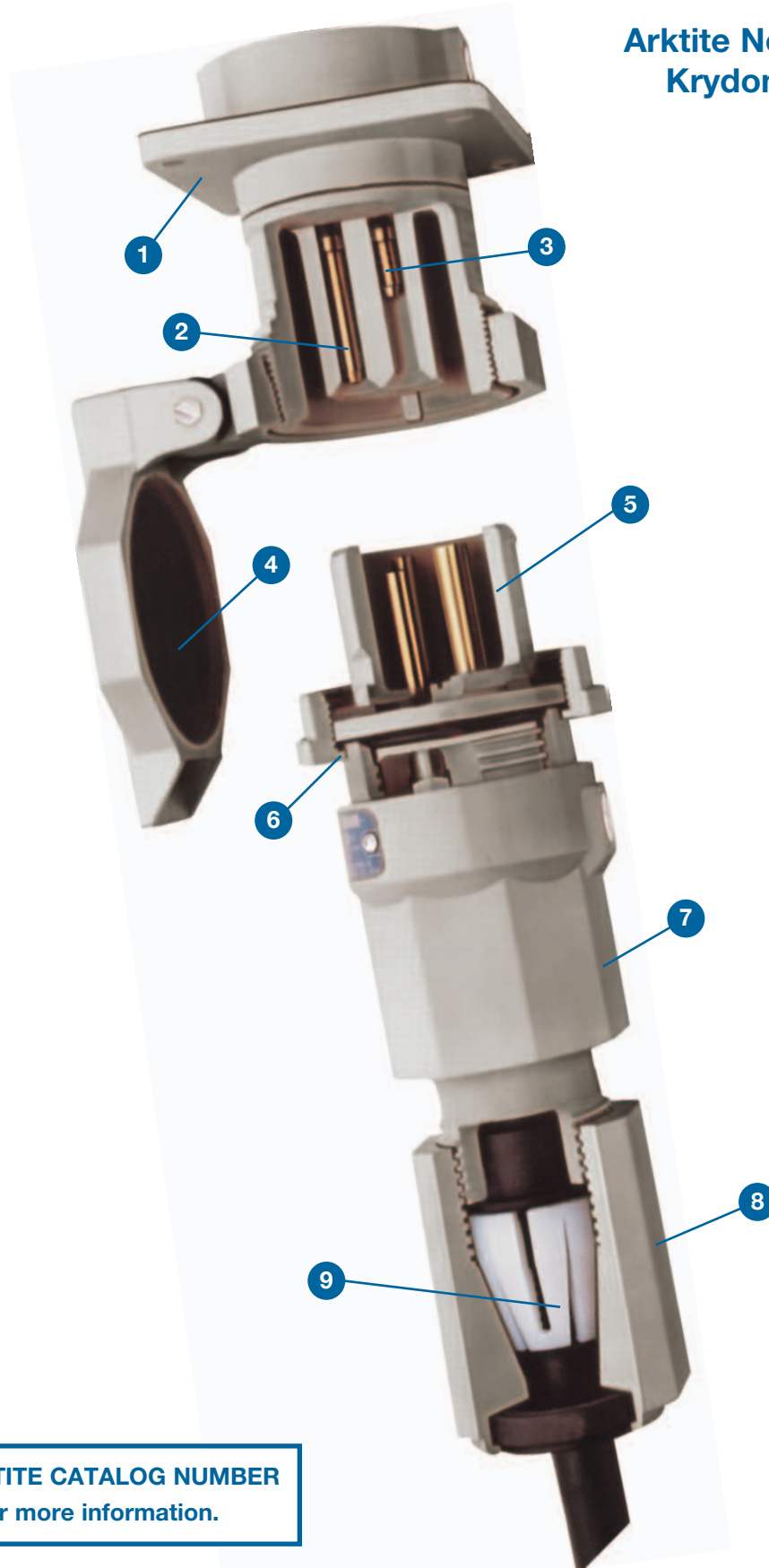


Arktite Nonmetallic Krydon Features

- 1 Molded of Krydon fiberglass-reinforced nonmetallic material which is highly resistant to corrosion, heat, weathering, and physical abuse.*
- 2 Grounding contacts that make-first and break-last in the unlikely event of a keyway failure.
- 3 Split-pin contact design provides 360° of electrical contact.
- 4 Spring door provides environmental protection of receptacle (NEMA 4).
- 5 Keyed for a perfect match in the molded one-piece insulator housing.
- 6 Sealing gaskets at all critical points inside Arktite plugs and receptacles protect against dust, dirt, mud, water, and corrosive contaminants.
- 7 Plugs can be used in both hazardous and non-hazardous areas when used with appropriately rated Arktite receptacles.
- 8 Total interchangeability with all existing Arktite products for comparable ratings and configurations.
- 9 A unique patented strain relief design prevents stress from reaching wire terminations at the contacts.

*Available in Style 2 only.

BUILD YOUR OWN ARKTITE CATALOG NUMBER
See page 18 - 19 for more information.



30 AMP - Cast Aluminum

Receptacles, Plugs, Connectors, Motor Plugs

NEMA 4 Watertight
600 VAC / 250 VDC
50 - 400 Hz



DESCRIPTION AND CONFIGURATION	RECEPTACLE* W/ SPRING DOOR CAT. NO.	PLUG		CORD CONNECTOR		MOTOR PLUG CAT. NO.
		CABLE RANGE	CAT. NO.	CABLE RANGE	CAT. NO.	
2 Wire 3 Pole Style 2	AR332	0.39-1.20	APJ3385	0.39-1.20	APR3365	APQ338
3 Wire 3 Pole Style 1	AR331	0.39-1.20	APJ3375	0.39-1.20	APR3355	APQ337
3 Wire 4 Pole Style 2	AR342	0.39-1.20	APJ3485	0.39-1.20	APR3465	APQ348
4 Wire 4 Pole Style 1	AR341	0.39-1.20	APJ3475	0.39-1.20	APR3455	APQ347

*To order AR Receptacles complete with **screw cap** instead of spring door, change the last digit from 1 to 7 or 2 to 8; i.e., AR331 to AR337 **OR** AR342 to AR348 (see page 16 for screw caps).

- For optional reversed interior, use suffix "**S22**" (see page 3).
- For optional rotated interior, use suffix "**S4**" (see page 3).
- For dimensions, see page 15.
- Maximum conductor size (wire well) 0.281" (see page 17).

Back Boxes (for Receptacles and Motor Plugs) - See page 7

20A metallic plugs, receptacles, and connectors are also available. Please refer to the Cooper Crouse-Hinds Product Catalog Section P for more information.

30 AMP - Krydon Nonmetallic

NEMA 4X Watertight
600 VAC / 250 VDC
50 - 400 Hz



DESCRIPTION AND CONFIGURATION	RECEPTACLE* W/ SPRING DOOR CAT. NO.	PLUG		CORD CONNECTOR		MOTOR PLUG CAT. NO.
		CABLE RANGE	CAT. NO.	CABLE RANGE	CAT. NO.	
2 Wire 3 Pole Style 2	NR332	0.55-0.70	NPJ3383	0.55-0.70	NPR3363	NPQ338
		0.70-0.85	NPJ3384	0.70-0.85	NPR3364	
3 Wire 4 Pole Style 2	NR342	0.55-0.70	NPJ3483	0.55-0.70	NPR3463	NPQ348
		0.70-0.85	NPJ3484	0.70-0.85	NPR3464	

*Krydon receptacle catalog numbers include a snap-on elastomeric cap in addition to spring door.

- For optional rotated interior, use suffix **"S4"** (see page 3).
- For dimensions, see page 15.
- Maximum conductor size (wire well) 0.281" (see page 17).

Back Boxes (for Receptacles and Motor Plugs)*



HUB SIZE	ARE	ARRH	ARJ	ARRC	ARD	ARJG
1/2	ARE13	ARRH13	ARJ13	ARRC13	ARD13	ARJG13
3/4	ARE23	ARRH23	ARJ23	ARRC23	ARD23	ARJG23
1	ARE33	ARRH33	ARJ33	ARRC33	ARD33	ARJG33

*The above back boxes are available with an optional Corro-Free™ epoxy powder coat finish for increased corrosion resistance. To specify, add suffix **"-S752"** to catalog number box.

60 AMP - Cast Aluminum

Receptacles, Plugs, Connectors, Motor Plugs

NEMA 4 Watertight
600 VAC / 250 VDC
50 - 400 Hz



DESCRIPTION AND CONFIGURATION	RECEPTACLE* W/ SPRING DOOR CAT. NO.	PLUG		CORD CONNECTOR		MOTOR PLUG CAT. NO.
		CABLE RANGE	CAT. NO.	CABLE RANGE	CAT. NO.	
2 Wire 3 Pole Style 2	AR632	0.50-1.45	APJ6385	0.50-1.45	APR6365	APQ638
3 Wire 3 Pole Style 1	AR631	0.50-1.45	APJ6375	0.50-1.45	APR6355	APQ637
3 Wire 4 Pole Style 2	AR642	0.50-1.45	APJ6485	0.50-1.45	APR6465	APQ648
4 Wire 4 Pole Style 1	AR641	0.50-1.45	APJ6475	0.50-1.45	APR6455	APQ647
4 Wire 5 Pole Style 2	AR658 ⁺	0.75-1.45	APJ6585	0.88-1.38	APR6565	--
				1.38-1.88	APR6567	
5 Wire 5 Pole Style 1	AR657 ⁺	0.50-1.45	APJ6575	--	--	--

*To order AR Receptacles complete with **screw cap** instead of spring door, change the last digit from 1 to 7 or 2 to 8; i.e., AR631 to AR637 **OR** AR642 to AR648 (see page 16 for screw caps).

- For optional reversed interior, use suffix **"S22"** (see page 3).
- For optional rotated interior, use suffix **"S4"** (see page 3).
- For dimensions, see page 15.
- Maximum conductor size (wire well) 0.312" (see page 17).

+ Supplied with screw cap only.

Back Boxes (for Receptacles and Motor Plugs) - See page 9

60 AMP - Krydon Nonmetallic

NEMA 4X Watertight
600 VAC / 250 VDC
50 - 400 Hz



DESCRIPTION AND CONFIGURATION	RECEPTACLE* W/ SPRING DOOR CAT. NO.	PLUG		CORD CONNECTOR		MOTOR PLUG CAT. NO.
		CABLE RANGE	CAT. NO.	CABLE RANGE	CAT. NO.	
2 Wire 3 Pole Style 2 	NR632	0.75-1.07	NPJ6384	0.75-1.07	NPR6364	NPQ638
		1.07-1.35	NPJ6385	1.07-1.35	NPR6365	
3 Wire 4 Pole Style 2 	NR642	0.75-1.07	NPJ6484	0.75-1.07	NPR6464	NPQ648
		1.07-1.35	NPJ6485	1.07-1.35	NPR6465	

*Krydon receptacle catalog numbers include a snap-on elastomeric cap in addition to spring door.

- For optional rotated interior, use suffix “S4” (see page 3).
- For dimensions, see page 15.
- Maximum conductor size (wire well) 0.312” (see page 17).

Back Boxes (for Receptacles and Motor Plugs)*



HUB SIZE	ARE	AJ	AJC	ARRH	ARRC	ARJ	ARD	ARJG
1/2	ARE36	AJ37	AJC37	ARRH36	ARRC36	ARJ36	ARD36	ARJG36
1 1/4	ARE46	AJ47	AJC47	ARRH46	ARRC46	ARJ46	ARD46	ARJG46
1 1/2	ARE56	AJ57	AJC57	ARRH56	ARRC56	ARJ56	ARD56	ARJG56
2	--	AJ67	AJC67	--	--	--	--	--

*The above back boxes are available with an optional Corro-Free™ epoxy powder coat finish for increased corrosion resistance. To specify, add suffix “-S752” to catalog number box.

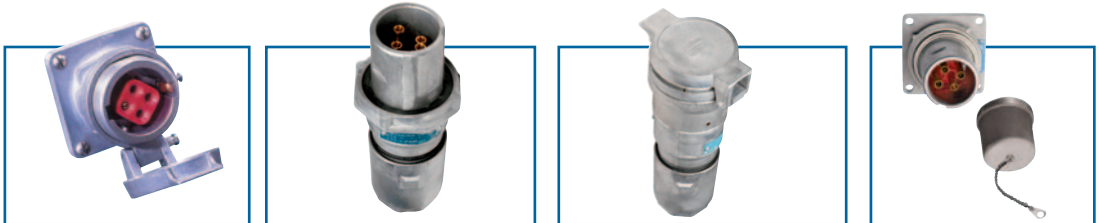
• AJ and AJC back boxes are also available in components. Refer to page 17.

- AJ / AJC back boxes are recommended when add. wiring space is required.
- The angle adapter on AJ and AJC back boxes can be installed at 90° rotations, making it possible to enter hub from several directions.

100 & 150 AMP - Cast Aluminum

Receptacles, Plugs, Connectors, Motor Plugs

NEMA 4 Watertight
600 VAC / 250 VDC
50 - 400 Hz



DESCRIPTION AND CONFIGURATION	RECEPTACLE* W/ SPRING DOOR CAT. NO.	PLUG		CORD CONNECTOR		MOTOR PLUG CAT. NO.
		CABLE RANGE	CAT. NO.	CABLE RANGE	CAT. NO.	
2 Wire 3 Pole Style 2	AR1032	0.875-1.7	APJ10387	0.875-1.7	APR10367	APQ1038
3 Wire 3 Pole Style 1	AR1031	0.875-1.7	APJ10377	0.875-1.7	APR10357	APQ1037
3 Wire 4 Pole Style 2	AR1042	0.875-1.7	APJ10487	0.875-1.7	APR10467	APQ1048
4 Wire 4 Pole Style 1	AR1041	0.875-1.7	APJ10477	0.875-1.7	APR10457	APQ1047

*To order AR Receptacles complete with **screw cap** instead of spring door, change the last digit from 1 to 7 or 2 to 8; i.e., AR1031 to AR1037 **OR** AR1042 to AR1048 (see page 16 for screw caps).

- For optional reversed interior, use suffix **"S22"** (see page 3).
- For optional rotated interior, use suffix **"S4"** (see page 3).
- For dimensions, see page 15.
- Maximum conductor size (wire well) 0.390" (see page 17).

Receptacles and Plugs - 150 Amp

DESCRIPTION AND CONFIGURATION	RECEPTACLE W/ SPRING DOOR CAT. NO.	PLUG	
		CABLE RANGE	CAT. NO.
3 Wire 4 Pole Style 2	AR1542	0.875-1.7	APJ15487

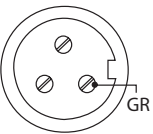
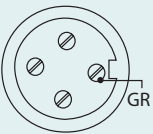
- **Uniquely polarized for 150A applications**
- **Consult factory for additional options and configurations.**

Back Boxes (for Receptacles and Motor Plugs) - See page 11

100 AMP - Krydon Nonmetallic

NEMA 4X Watertight
600 VAC / 250 VDC
50 - 400 Hz



DESCRIPTION AND CONFIGURATION	RECEPTACLE* W/ SPRING DOOR CAT. NO.	PLUG		CORD CONNECTOR		MOTOR PLUG CAT. NO.
		CABLE RANGE	CAT. NO.	CABLE RANGE	CAT. NO.	
2 Wire 3 Pole Style 2 	NR1032	0.93-1.21	NPJ10386	0.93-1.21	NPR10366	NPQ1038
		1.21-1.50	NPJ10387	1.21-1.50	NPR10367	
3 Wire 4 Pole Style 2 	NR1042	0.93-1.21	NPJ10486	0.93-1.21	NPR10466	NPQ1048
		1.21-1.50	NPJ10487	1.21-1.50	NPR10467	

*Krydon receptacle catalog numbers include a snap-on elastomeric cap in addition to spring door.

- For optional rotated interior, use suffix **"S4"** (see page 3).
- For dimensions, see page 15.
- Maximum conductor size (wire well) 0.390" (see page 17).

Back Boxes (for Receptacles and Motor Plugs)*

HUB SIZE	AJ w/ ADAPTER 15° Angled, Dead End	AJC w/ ADAPTER 15° Angled, Thru-Feed
1	AJ37	AJC37
1 1/4	AJ47	AJC47
1 1/2	AJ57	AJC57
2	AJ67	AJC67



*The above back boxes are available with an optional Corro-Free™ epoxy powder coat finish for increased corrosion resistance. To specify, add suffix **"-S752"** to catalog number box.

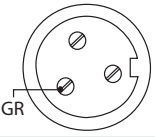
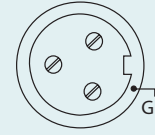
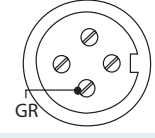
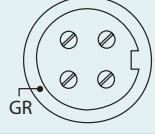
*AJ and AJC back boxes are also available in components. Refer to page 17.
 *The angle adapter on AJ and AJC back boxes can be installed at 90° rotations, making it possible to enter hub from several directions.

200 AMP - Cast Aluminum

Receptacles, Plugs, Connectors

Weatherproof
600 VAC / 250 VDC
50 - 400 Hz



DESCRIPTION AND CONFIGURATION	RECEPTACLE W/ MECHANICAL LUG		PLUG W/ MECHANICAL LUG			CORD CONNECTOR W/ MECHANICAL LUG		
	WIRE WELL	CAT. NO.	CABLE RANGE	WIRE WELL	CAT. NO.	CABLE RANGE	WIRE WELL	CAT. NO.
2 Wire 3 Pole Style 2 	0.687"	ARL2032	0.875-1.375	0.687"	APL20365	0.875-1.375	0.687"	APRL20325
			1.375-1.875	0.687"	APL20367	1.375-1.875	0.687"	APRL20327
			1.875-2.500	0.687"	APL20368	1.875-2.500	0.687"	APRL20328
3 Wire 3 Pole Style 1 	0.687"	ARL2031	0.875-1.375	0.687"	APL20355	0.875-1.375	0.687"	APRL20315
			1.375-1.875	0.687"	APL20357	1.375-1.875	0.687"	APRL20317
			1.875-2.500	0.687"	APL20358	1.875-2.500	0.687"	APRL20318
3 Wire 4 Pole Style 2 	0.687"	ARL2042	0.875-1.375	0.687"	APL20465	0.875-1.375	0.687"	APRL20425
			1.375-1.875	0.687"	APL20467	1.375-1.875	0.687"	APRL20427
			1.875-2.500	0.687"	APL20468	1.875-2.500	0.687"	APRL20428
4 Wire 4 Pole Style 1 	0.687"	ARL2041	0.875-1.375	0.687"	APL20455	0.875-1.375	0.687"	APRL20415
			1.375-1.875	0.687"	APL20457	1.375-1.875	0.687"	APRL20417
			1.875-2.500	0.687"	APL20458	1.875-2.500	0.687"	APRL20418
			2.500-3.000	0.687"	APL20451	2.500-3.000	0.687"	APRL204113

- For optional reversed interior, use suffix **"S22"** (see page 3).
- For optional rotated interior, use suffix **"S4"** (see page 3).
- Mechanical set screw compression lug terminations standard.
- Remove "L" for crimp/solder conductor terminations. For more information, see Cooper Crouse-Hinds Product Catalog.

- For dimensions, see page 15.
- For wire sizes, see page 17.

Back Boxes (for Receptacles)*

HUB SIZE	200A - AJ w/ ADAPTER 45° Angled, Dead End	200A - AJC w/ ADAPTER 45° Angled, Thru-Feed	HUB SIZE	400A - AJ w/ ADAPTER
1 1/2	AJ58	--	2	AJ69
2	AJ68	--	2 1/2	AJ79
2 1/2	AJ78	AJC78	3	AJ89



* AJ and AJC back boxes are also available in components. Refer to page 17.

*The angle adapter on AJ and AJC back boxes can be installed at 90° rotations, making it possible to enter hub from several directions.

Receptacles, Plugs, Connectors

Weatherproof
600 VAC / 250 VDC
50 - 400 Hz

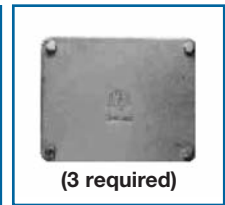
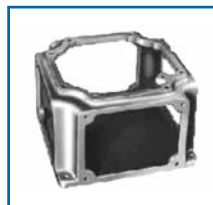


		RECEPTACLE			PLUG		CORD CONNECTOR		
DESCRIPTION AND CONFIGURATION		WIRE WELL	CAT. NO.	CABLE RANGE	WIRE WELL	CAT. NO.	CABLE RANGE	WIRE WELL	CAT. NO.
2 Wire 3 Pole Style 2		0.84"	AR4032	1.375-1.875	0.84"	AP40367	1.375-1.875	0.84"	APR40327
				1.875-2.500	0.84"	AP40368	1.875-2.500	0.84"	APR40328
		1.25"	AR40322	2.500-3.000	1.25"	AP403610	2.500-3.000	1.25"	APR403210
				3.000-3.500	1.25"	AP403612	3.000-3.500	1.25"	APR403212
3 Wire 3 Pole Style 1		0.84"	AR4031	1.375-1.875	0.84"	AP40357	1.375-1.875	0.84"	APR40317
				1.875-2.500	0.84"	AP40358	1.875-2.500	0.84"	APR40318
		1.25"	AR40312	2.500-3.000	1.25"	AP403510	2.500-3.000	1.25"	APR403110
				3.000-3.500	1.25"	AP403512	3.000-3.500	1.25"	APR403112
3 Wire 4 Pole Style 2		0.84"	AR4042	1.375-1.875	0.84"	AP40467	1.375-1.875	0.84"	APR40427
				1.875-2.500	0.84"	AP40468	1.875-2.500	0.84"	APR40428
		1.25"	AR40422	2.500-3.000	1.25"	AP404610	2.500-3.000	1.25"	APR404210
				3.000-3.500	1.25"	AP404612	3.000-3.500	1.25"	APR404212
4 Wire 4 Pole Style 1		0.84"	AR4041	1.375-1.875	0.84"	AP40457	1.375-1.875	0.84"	APR40417
				1.875-2.500	0.84"	AP40458	1.875-2.500	0.84"	APR40418
		1.25"	AR40412	2.500-3.000	1.25"	AP404510	2.500-3.000	1.25"	APR404110
				3.000-3.500	1.25"	AP404512	3.000-3.500	1.25"	APR404112

- For optional reversed interior, use suffix "S22" (see page 3).
- For optional rotated interior, use suffix "S4" (see page 3).

- For dimensions, see page 15.
- For wire sizes, see page 17.

Back Boxes (for Receptacles)*



HUB SIZE	COMPLETE BACK BOX CAT. NO.
2	AJX69
2 1/2	AJX79
3	AJX89
3 1/2	AJX929
4	AJX9210
5	AJX9212

Consisting of...

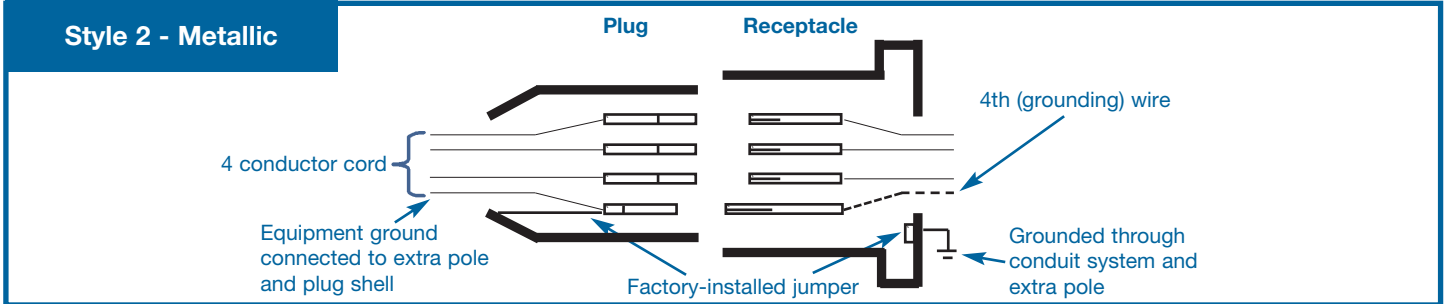
BACK BOX (Aluminum)	ANGLE ADAPTER (Aluminum)	HUB PLATE (Feraloy)	BLANK PLATE (Feraloy)
AJX99	AJ245	YYP96	YYP900
AJX99	AJ245	YYP97	YYP900
AJX99	AJ245	YYP98	YYP900
AJX99	AJ245	YYP99	YYP900
AJX99	AJ245	YYP910	YYP900
AJX99	AJ245	YYP9012	YYP900

* AJX back boxes are also available in components.

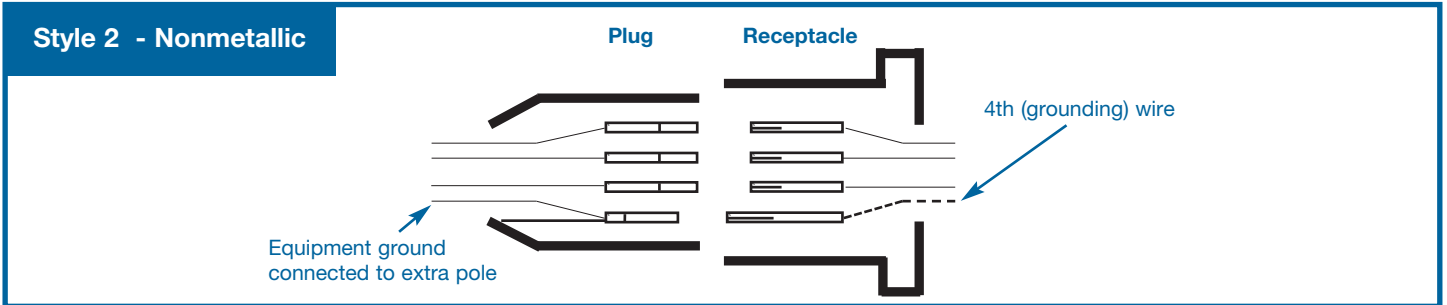
* Complete AJX back boxes include one hub, three blank plates, one angle adapter, and one back box. These plates can be interchanged for other entry locations; e.g., for thru-feed, use two hub plates and two blank plates (total of 4 plates required).

Arktite® Plugs, Receptacles, and Connectors

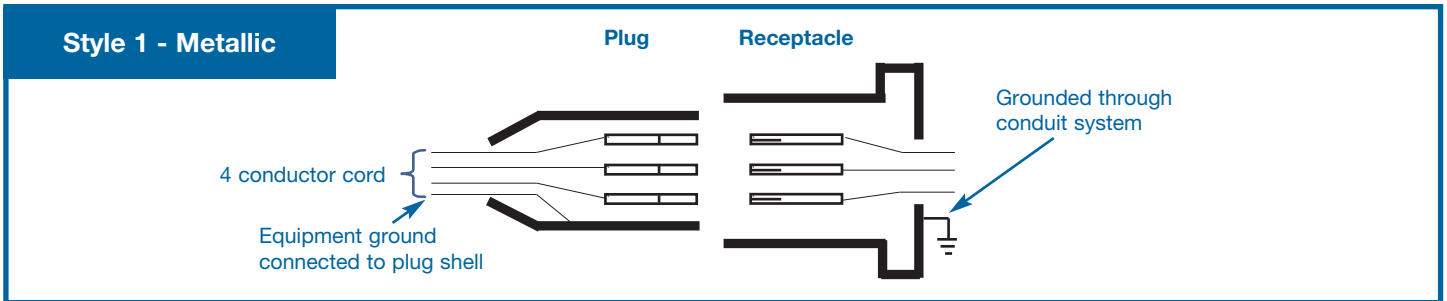
Grounding



Style 2 metallic units with metal housing have a separate designated ground contact that is bonded to the metallic housing. The metallic housing of the plug, receptacle, or connector forms a parallel ground circuit through the receptacle or connector detent spring.



Style 2 nonmetallic (Krydon) units provide the ground circuit through the designated ground contacts.



Style 1 units complete the grounding circuit through the metallic plug shell, receptacle housing, or connector shell.

Electrical Rating Ranges

- **Voltage** - 600 VAC, 50 to 400 Hz; 250 VDC*
- **Amperes** - 30, 60, 100, 200,** and 400**

Maximum Horsepower Ratings

Crouse-Hinds recommends circuit breaking use be limited to emergency conditions only and that a horsepower rated switch or Crouse-Hinds interlocked receptacle be used for making or breaking under load.

Electrical System	Continuous Duty A Rating Plug & Recep.	Motor Horsepower†			
		120V	240V	480V	600V
Single-phase	30	2	3	7.5	10
	60	5	10	25	20
	100	10	20		
	200	15	40		
Three-phase	30	3	5	10	10
	60	10	20	40	50
	100	15	30	40	25
	200	30	60	25	15

* For use on systems less than 60 Hz, Receptacles, Plugs, and Connectors are for disconnect use only.

** 200A and 400A Arktite Plugs, Receptacles, and Connectors are for service disconnect use only.

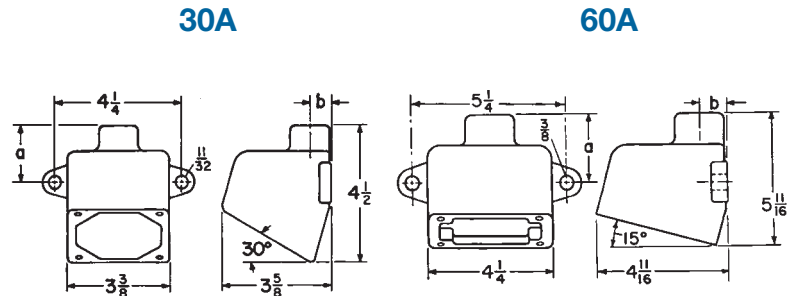
NOTE: For hazardous area power connectors and more complete technical information, refer to Cooper Crouse-Hinds Catalog Section P.

† Horsepower ratings are based on Cooper Crouse-Hinds testing in which locked-rotor currents were interrupted by withdrawing the plug from the receptacle.

Dimensions

ARE Back Boxes

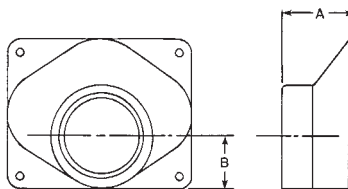
Cat. No.	Rating	Size	a	b
ARE13	30A	1/2	1 27/32	11/16
ARE23	30A	3/4	1 27/32	13/16
ARE33	30A	1	1 31/32	15/16
ARE36	60A	1	2 9/16	15/16
ARE46	60A	1 1/4	2 5/8	1 3/16
ARE56	60A	1 1/2	2 11/16	1 5/16



Hub Plate

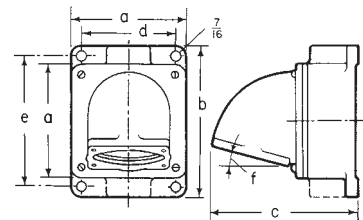
400A

	Hub Size	"A"	"B"
YYP96	2	3 3/4	1 11/16
YYP97	2 1/2	3 7/8	2 5/16
YYP98	3	3 7/8	2 5/16
YYP99	3 1/2	3 7/8	2 13/16
YYP910	4	3 7/8	2 9/16
YYP9012	5	4 5/8	3 7/16



AJ and AJC

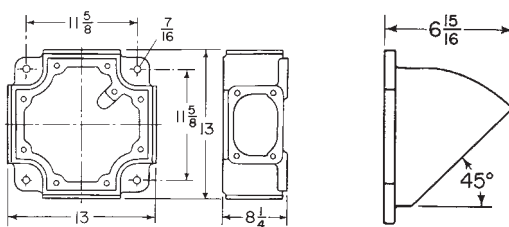
With 60, 100, and 200A Angle Adapters



Rating	60, 100A	60, 100A	200A	400A
Cat. No. AJ(C)	37, 47, 57	67	58, 68, 78	69, 79, 89
Size	1, 1 1/4, 1 1/2	2	1 1/2, 2, 2 1/2	2, 2 1/2, 3
a	5 7/8	5 7/8	8	9
b	8	8	10 3/4	11 5/8
c	7 7/16	8	9 7/8	11 13/16
d	4 7/8	4 7/8	6 3/4	7 3/4
e	7	7	9 1/2	10 3/8
f	15°	15°	45°	45°

AJ and AJX

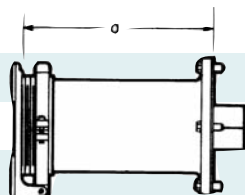
400A



Receptacle, Plug, Cord Connector ('a' Dimension)

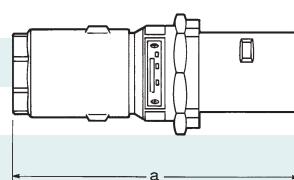
AR Receptacle

30A	2 7/8
60A	4 1/4
100A	5 1/4
200A	7
400A	11 1/8



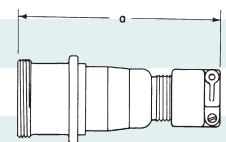
AP/APJ Plug†

30A	6 1/2
60A	8 1/2
100A	10 1/8
200A	14 3/4
400A	20 1/2



APR Cord Connector†

30A	8 1/4
60A	8 1/4
100A	10 7/8
200A	15 7/8
400A	20 1/4



† Dimensions are approximate and vary with cable size.

Arktite® Plugs, Receptacles, and Connectors

Standard Replacement Parts

Replacement Interiors (Cast Aluminum Units) 30, 60, 100A					Krydon (Nonmetallic Units) Arktite Replacement Contacts				
Complete insulator and contact assembly		30A	60A	100A	Contacts are supplied as individual components	Contacts	30A	60A	
2W3P	AR-APR	ATP278	ATP298	ATP318			2W3P	NR-NPR	Power
	APJ	ATP273	ATP293	ATP313	Ground	1 of - 0490267			1 of - 0490269
3W3P	AR-APR	ATP276	ATP296	ATP316	NPJ	Power		2 of - 0490272	2 of - 0490274
	APJ	ATP271	ATP291	ATP311		Ground		1 of - 0490273	1 of - 0490275
3W4P	AR-APR	ATP279	ATP299	ATP319	3W4P	NR-NPR	Power	3 of - 0490266	3 of - 0490268
	APJ	ATP274	ATP294	ATP314			Ground	1 of - 0490267	1 of - 0490269
4W4P	AR-APR	ATP277	ATP297	ATP317		NPJ	Power	3 of - 0490272	3 of - 0490274
	APJ	ATP272	ATP292	ATP312			Ground	1 of - 0490273	1 of - 0490275

Replacement Interiors 200A									
*Contacts and insulator supplied as individual components	2 Piece Insulator			200A Contacts				Mechanical Lug	
	Top	Bottom	0.56" Wire Well		0.75" Wire Well		0.687" Wire Well		
			Power	Ground	Power	Ground	Power	Ground	
2W3P	AR-APR	2095L	0401488-4	2 of - 0490339	1 of - 0490343	2 of - 0490340	1 of - 0490344	1 of - 0403688	1 of - 0403687
	AP	3374B	0401488-2	2 of - 0490319	1 of - 0490323	2 of - 0490320	1 of - 0490324	1 of - 0403678	1 of - 0403677
3W3P	AR-APR	2095L	0401488-3	3 of - 0490339	--	3 of - 0490340	--	--	--
	AP	3374B	0401488-1	3 of - 0490319	--	3 of - 0490320	--	--	--
3W4P	AR-APR	2101L	0401488-8	3 of - 0490339	1 of - 0490343	3 of - 0490340	1 of - 0490344	1 of - 0403688	1 of - 0403687
	AP	5202B	0401488-6	3 of - 0490319	1 of - 0490323	3 of - 0490320	1 of - 0490324	1 of - 0403678	1 of - 0403677
4W4P	AR-APR	2101L	0401488-7	4 of - 0490339	--	4 of - 0490340	--	--	--
	AP	5202B	0401488-5	4 of - 0490319	--	4 of - 0490320	--	--	--
Wire Well Reducers				To 0.469" - AP:0401977-1	--	To 0.672" - AP:0401977-3	--	--	--
				To 0.500" - AP:0401977-2	--	--	--	--	--

Replacement Interiors 400A									
*Contacts and insulator supplied as individual components	2 Piece Insulator			400A Contacts					
	Top	Bottom	0.84" Wire Well		1.25" Wire Well				
			Power	Ground	Power	Ground			
2W3P	AR-APR	4520	0401567-4	2 of - 0490341	1 of - 0490345	2 of - 0490342	1 of - 0490346		
	AP	2140L	0401567-2	2 of - 0490321	1 of - 0490325	2 of - 0490322	1 of - 0490326		
3W3P	AR-APR	4520	0401567-3	3 of - 0490341	--	3 of - 0490342	--		
	AP	2140L	0401567-1	3 of - 0490321	--	3 of - 0490322	--		
3W4P	AR-APR	3064D	0401567-8	3 of - 0490341	1 of - 0490345	3 of - 0490342	1 of - 0490346		
	AP	3054B	0401567-6	3 of - 0490321	1 of - 0490325	3 of - 0490322	1 of - 0490326		
4W4P	AR-APR	3064D	0401567-7	4 of - 0490341	--	4 of - 0490342	--		
	AP	3054B	0401567-5	4 of - 0490321	--	4 of - 0490322	--		
Wire Well Reducers				To 0.687" - AP:0402062	--	To 0.950" - AP:0402063	--		
				To 0.590" - AP:0402760	--	To 1.04" - AP:0402064	--		

*Replacement interiors for 200 and 400A units with reversed interior "S22," contact factory for replacement.

Miscellaneous Replacement Parts							
Description	AR Spring Door	NR Spring Door	AR Screw Cap	APJ/AP Fastening Ring	NPJ Fastening Ring	Recep. to Box or Adapter Gasket	Angle Adapter to Box Gasket
30A	QE50	0490370	QE13	0400723	0401782	GASK499	--
60A	QE51 (3 Pole)	0490371 (3 Pole)	QE32 (3 Pole)	0400724 (3 Pole)	0401783 (3 Pole)	GASK500	GASK399
	QE52 (4 Pole)	0490372 (4 Pole)	QE34 (4 Pole)	0400725 (4 Pole)	0401784 (4 Pole)		
100A	QE531 (3 Pole)	--	QE62 (3 Pole)	0402877 (3 Pole)	--	GASK500	GASK399
	QE53 (4 Pole)	--	QE64 (4 Pole)	0402879 (4 Pole)	--		
200A	0401501-2	--	--	0401965 (3 Pole)	--	GASK262	GASK400
400A	04015525-1	--	--	0401964 (4 Pole)	--	GASK263	1511B
				0402023 (3 Pole)			
				0402023 (4 Pole)			

Wire Sizes

The table below lists the diameter of the wire recess in Arkтите plug and receptacle contacts so that maximum size of bare conductor can be determined. Range of wire sizes shown in table are intended only as a guide. Depending on type of wire used (building wire, flexible or extra flexible cable) and its construction (number and size of strands), bare copper diameters vary widely.

Diameter of Wire Recess in Plug and Receptacle Contacts

Ampere Rating	Contact Type	Diameter of Recess	Wire Size ††	
			Building	Extra Flex
30 (2, 3, & 4-pole)	Pressure	0.281	#10-#6	#10-#8
60 (2, 3, 4, & 5-pole)	Pressure	0.312	#6-#4	#8-#4
100 (2, 3, & 4-pole)	Pressure	0.390	#4-#1	#4-#2
200 (3 & 4-pole)	Pressure	0.687	2/0-4/0	2/0-3/0
400 (Std. 3 & 4-pole)	Crimp/Solder	0.84	250-500MCM	250-400MCM
400 (Lg. 3 & 4-pole)	Crimp/Solder	1.25	500-1000MCM	400-750MCM

†† Do not use wire size smaller than minimum size recommended.

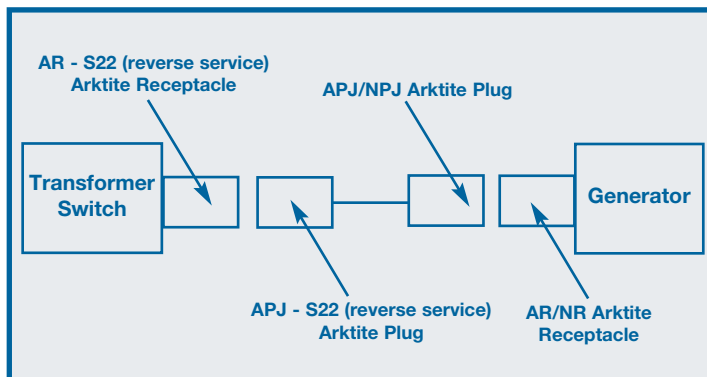
Cross Reference (AJ, AJC, AJX Back Box)

Hub Size	Type	60 & 100A		200A		400A	
		Box Only	Box & Adapter Assembly	Box Only	Box & Adapter Assembly	Box Only	Box & Adapter Assembly
1"	One Hub	AJ56*	AJ37				
	Feed Thru	AJC56*	AJC37				
1 1/4"	One Hub	AJ56*	AJ47				
	Feed Thru	AJC56*	AJC47				
1 1/2"	One Hub	AJ56	AJ57	AJ71*	AJ58		
	Feed Thru	AJC56	AJC57				
2"	One Hub	AJ66	AJ67	AJ71*	AJ68	AJ82*	AJ69
	Feed Thru	AJC66	AJC67				
2 1/2"	One Hub			AJ71	AJ78	AJ82*	AJ79
	Feed Thru			AJC71	AJC78		
3"	One Hub					AJ82	AJ89
	Feed Thru						
Angle Adapter		AJA6		AJA1		AJA2	

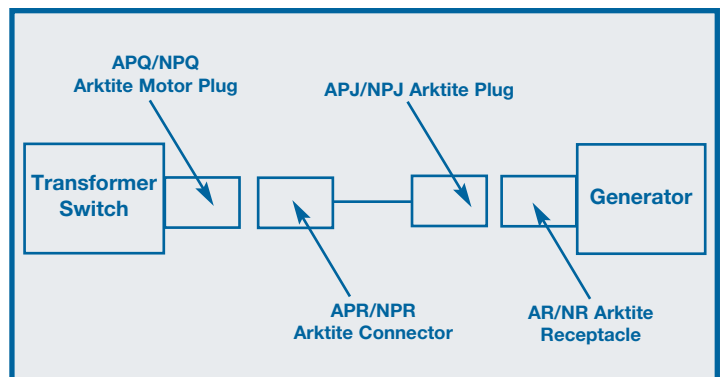
*Reducer supplied with assembly.

Typical Portable Power Installation

Option #1



Option #2



TYPICAL RECEPTACLE ASSEMBLY CATALOG NUMBER

A R E A 10 42 6 - S4

RECEPTACLE TYPE

- AR - Arktite Receptacle (Cast Aluminum)
- ARL - Arktite Receptacle (Cast Aluminum) - 200A (mechanical lug ONLY)
- NR - Nonmetallic (Krydon) Arktite Receptacle

BACK BOX

- E - Back Box, Angled (ARE Type)
- EA - Back Box and Angle Adapter (AJ Type)
- EX - Back Box and Angle Adapter (AJX Type)

AMPERAGE

- 3 - 30A
- 6 - 60A
- 10 - 100A
- 20 - 200A
- 40 - 400A

RECEPTACLE DESCRIPTION

30A, 60A, AND 100A

- | | |
|-----------|---------------------------|
| 31 - 3W3P | Style 1 with Spring Door |
| 32 - 2W3P | Style 2 with Spring Door |
| 37 - 3W3P | Style 1 with Threaded Cap |
| 38 - 2W3P | Style 2 with Threaded Cap |
| 41 - 4W4P | Style 1 with Spring Door |
| 42 - 3W4P | Style 2 with Spring Door |
| 47 - 4W4P | Style 1 with Threaded Cap |
| 48 - 3W4P | Style 2 with Threaded Cap |
| 57 - 5W5P | Style 1 with Threaded Cap |
| 58 - 4W5P | Style 2 with Threaded Cap |

200A ARL (Mechanical Lug) with Spring Door

- | | | |
|-----------|---------|--------------------------------|
| 31 - 3W3P | Style 1 | 200A ARL Wire Well Size 0.687" |
| 32 - 2W3P | Style 2 | 200A ARL Wire Well Size 0.687" |
| 41 - 4W4P | Style 1 | 200A ARL Wire Well Size 0.687" |
| 42 - 3W4P | Style 2 | 200A ARL Wire Well Size 0.687" |

200A and 400A (Crimp/Solder) with Spring Door

- | | | |
|------------|---------|---------------------------|
| 31 - 3W3P | Style 1 | 200A Wire Well Size 0.56" |
| | | 400A Wire Well Size 0.84" |
| 32 - 2W3P | Style 2 | 200A Wire Well Size 0.56" |
| | | 400A Wire Well Size 0.84" |
| 41 - 4W4P | Style 1 | 200A Wire Well Size 0.56" |
| | | 400A Wire Well Size 0.84" |
| 42 - 3W4P | Style 2 | 200A Wire Well Size 0.56" |
| | | 400A Wire Well Size 0.84" |
| 312 - 3W3P | Style 1 | 200A Wire Well Size 0.75" |
| | | 400A Wire Well Size 1.25" |
| 322 - 2W3P | Style 2 | 200A Wire Well Size 0.75" |
| | | 400A Wire Well Size 1.25" |
| 412 - 4W4P | Style 1 | 200A Wire Well Size 0.75" |
| | | 400A Wire Well Size 1.25" |
| 422 - 3W4P | Style 2 | 200A Wire Well Size 0.75" |
| | | 400A Wire Well Size 1.25" |

BACK BOX HUB SIZE (In.)

- | | |
|-----------|-----------|
| 1 - 1/2 | 7 - 2 1/2 |
| 2 - 3/4 | 8 - 3 |
| 3 - 1 | 9 - 3 1/2 |
| 4 - 1 1/4 | 10 - 4 |
| 5 - 1 1/2 | 12 - 5 |
| 6 - 2 | |

OPTIONS

- S4 - Rotated Interior (See page 3)
- S22 - Reversed Contacts (See page 3)

ARKTITE INTERLOCKED RECEPTACLES

Cooper Crouse-Hinds offers the most complete line of interlocked receptacles for any industrial application, including wet, damp, dusty, corrosive, high abuse, and hazardous locations.

The Arktite Interlocked Receptacle is mechanically interlocked with a switch or breaker preventing plug disengagement under load.

This provides improved reliability, safety, and reduced maintenance costs, while maintaining flexibility of installation - all with the industry's product of choice - Arktite Power Connectors.



For more information:

If further assistance is required, please contact an authorized Cooper Crouse-Hinds Distributor, Sales Office, or Customer Service Department.

U.S. (Global Headquarters):
Cooper Crouse-Hinds
Wolf & Seventh North Streets
Syracuse, NY 13208
Toll Free: 866-764-5454
FAX: (315) 477-5179
crouse.customerctr@cooperindustries.com

Canada:
Cooper Crouse-Hinds Canada
Toll Free: 800-265-0502
(905) 507-4187
FAX: (866) 587-2850

Mexico:
Cooper Crouse-Hinds, S.A. de C.V.
52-555-804-4000
FAX: 52-555-804-4020

www.crouse-hinds.com
crouse.customerctr@crouse-hinds.com
Cooper Crouse-Hinds is a trademark of Cooper Industries, Inc.
©2008 Cooper Industries, Inc.

Cooper Crouse-Hinds
P.O. Box 4999
Syracuse, NY 13221
Toll Free: (866) 764-5454
Fax: (315) 477-5179 FAX Orders Only: (866) 653-0640
crouse.customerctr@cooperindustries.com