

30.5-MM AND 22.5-MM PUSHBUTTON ENCLOSURES, TYPE 4X



INDUSTRY STANDARDS

UL 508A Listed; Type 4, 4X, 12; File Number E61997
 cUL Listed per CSA C22.2 No 94; Type 4, 4X, 12; File Number E61997

NEMA/EEMAC Type 4X, 12, 13
 CSA File Number 42186: Type 4, 4X, 12
 IEC 60529, IP66

APPLICATION

Punched specifically to house either 30.5-mm or 22.5-mm oil-tight pushbuttons, switches and pilot lights. Enclosures provide protection against dirt, dust, oil and water.
 See *Mild Steel* chapter for related mild steel enclosures.

SPECIFICATIONS

- 14 gauge bodies, 16 gauge covers; Type 304 or Type 316L stainless steel
- Seams continuously welded and ground smooth
- Captivated cover screws thread into sealed wells
- Bonding provision on door; grounding nut on body
- 4-way pushbutton holes accept all brands of oil-tight pushbuttons, switches and pilot lights
- Enclosures with more than one column of pushbutton holes have internal detachable hinge to hold cover open during wiring, yet permit immediate removal
- Oil-resistant gasket

FINISH

Cover and sides of body have smooth #4 brushed finish.

ACCESSORIES

Industrial Corrosion Inhibitors
 HOL-SEALERS Hole Seals
 Tamper-Resistant Screws

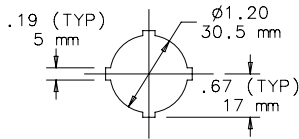
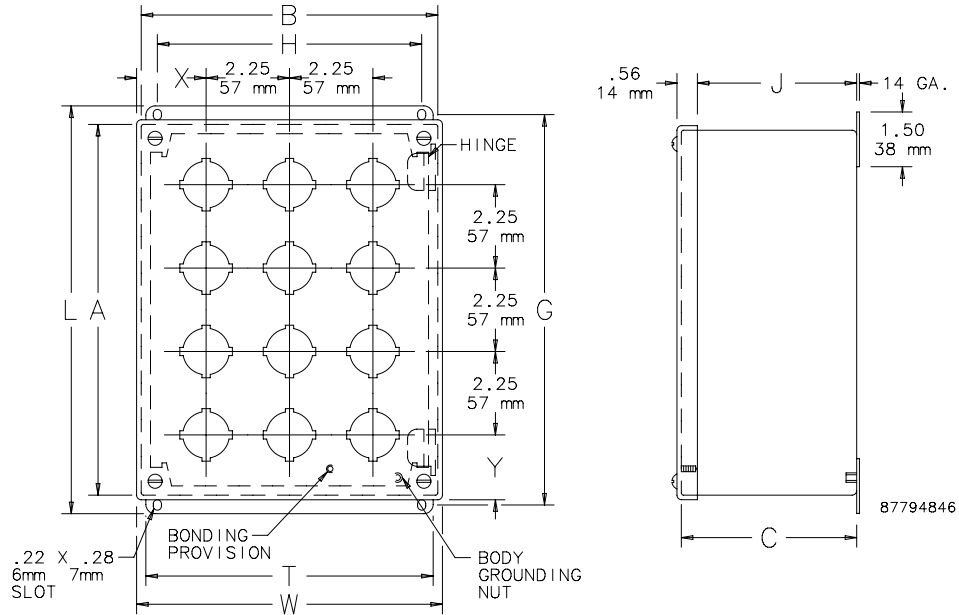
BULLETIN: PB1S

Standard Product

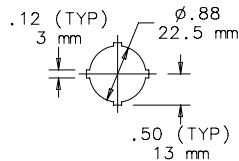
Catalog Number	AxBxC in./mm	Hole Size	Stainless Steel Type	Gauge	Number of Holes	Mounting G x H in./mm	Overall L x W in./mm	J in./mm	T in./mm	X in./mm	Y in./mm
E1PBSS	3.50 x 4.25 x 2.75 89 x 108 x 70	30.5 mm	Type 304	16	1	4.00 x 2.38 102 x 60	4.50 x 3.47 114 x 88	2.31 59	3.00 76	1.73 47	1.86 47
E1PBSS6	3.50 x 4.25 x 2.75 89 x 108 x 70	30.5 mm	Type 316L	16	1	4.00 x 2.38 102 x 60	4.50 x 3.47 114 x 88	2.31 59	3.00 76	1.73 47	1.86 47
E1PBGSS	3.50 x 4.25 x 2.75 89 x 108 x 70	22.5 mm	Type 304	16	1	4.00 x 2.38 102 x 60	4.50 x 3.47 114 x 88	2.31 59	3.00 76	1.73 47	1.86 47
E2PBSS	5.75 x 3.25 x 2.75 146 x 83 x 70	30.5 mm	Type 304	16	2	6.25 x 2.38 159 x 60	6.75 x 3.47 171 x 88	2.31 59	3.00 76	1.73 44	1.86 47
E2PBSS6	5.75 x 3.25 x 2.75 146 x 83 x 70	30.5 mm	Type 316L	16	2	6.25 x 2.38 159 x 60	6.75 x 3.47 171 x 88	2.31 59	3.00 76	1.73 44	1.86 47
E2PBGSS	5.75 x 3.25 x 2.75 146 x 83 x 70	22.5 mm	Type 304	16	2	6.25 x 2.38 159 x 60	6.75 x 3.47 171 x 88	2.31 59	3.00 76	1.73 44	1.86 47
E3PBSS	8.00 x 3.25 x 2.75 203 x 83 x 70	30.5 mm	Type 304	14	3	8.50 x 2.38 216 x 60	9.00 x 3.47 229 x 88	2.31 59	3.00 76	1.73 44	1.86 47
E3PBSS6	8.00 x 3.25 x 2.75 203 x 83 x 70	30.5 mm	Type 316L	14	3	8.50 x 2.38 216 x 60	9.00 x 3.47 229 x 88	2.31 59	3.00 76	1.73 44	1.86 47
E3PBGSS	8.00 x 3.25 x 2.75 203 x 83 x 70	22.5 mm	Type 304	14	3	8.50 x 2.38 216 x 60	9.00 x 3.47 229 x 88	2.31 59	3.00 76	1.73 44	1.86 47
E4PBSS	10.00 x 3.25 x 2.75 254 x 83 x 70	30.5 mm	Type 304	14	4	10.75 x 2.38 273 x 60	11.25 x 3.47 286 x 88	2.31 59	3.00 76	1.73 44	1.86 47
E4PBSS6	10.00 x 3.25 x 2.75 254 x 83 x 70	30.5 mm	Type 316L	14	4	10.75 x 2.38 273 x 60	11.25 x 3.47 286 x 88	2.31 59	3.00 76	1.73 44	1.86 47
E4PBGSS	10.00 x 3.25 x 2.75 254 x 83 x 70	22.5 mm	Type 304	14	4	10.75 x 2.38 273 x 60	11.25 x 3.47 286 x 88	2.31 59	3.00 76	1.73 44	1.86 47
E6PBSS	9.50 x 6.25 x 3.00 241 x 159 x 76	30.5 mm	Type 304	14	6	10.00 x 5.38 254 x 137	10.50 x 6.47 267 x 164	2.56 65	6.00 152	2.11 54	2.61 66
E6PBSS6	9.50 x 6.25 x 3.00 241 x 159 x 76	30.5 mm	Type 316L	14	6	10.00 x 5.38 254 x 137	10.50 x 6.47 267 x 164	2.56 65	6.00 152	2.11 54	2.61 66
E6PBGSS	9.50 x 6.25 x 3.00 241 x 159 x 76	22.5 mm	Type 304	14	6	10.00 x 5.38 254 x 137	10.50 x 6.47 267 x 164	2.56 65	6.00 152	2.11 54	2.61 66
E9PBSS	9.50 x 8.50 x 3.00 241 x 216 x 76	30.5 mm	Type 304	14	9	10.00 x 7.62 254 x 194	10.50 x 8.72 267 x 221	2.56 65	8.25 210	2.11 54	2.61 66
E9PBSS6	9.50 x 8.50 x 3.00 241 x 216 x 76	30.5 mm	Type 316L	14	9	10.00 x 7.62 254 x 194	10.50 x 8.72 267 x 221	2.56 65	8.25 210	2.11 54	2.61 66

Catalog Number	AxBxC in./mm	Hole Size	Stainless Steel Type	Gauge	Number of Holes	Mounting G x H in./mm	Overall L x W in./mm	J in./mm	T in./mm	X in./mm	Y in./mm
E9PBSS	9.50 x 8.50 x 3.00	22.5 mm	Type 304	14	9	10.00 x 7.62	10.50 x 8.72	2.56	8.25	2.11	2.61
	241 x 216 x 76					254 x 194	267 x 221	65	210	54	66
E12PBSS	11.75 x 8.50 x 3.00	30.5 mm	Type 304	14	12	12.25 x 7.62	12.75 x 8.72	2.56	8.25	2.11	2.61
	298 x 216 x 76					311 x 194	324 x 221	65	210	54	66
E12PBSS6	11.75 x 8.50 x 3.00	30.5 mm	Type 316L	14	12	12.25 x 7.62	12.75 x 8.72	2.56	8.25	2.11	2.61
	298 x 216 x 76					311 x 194	324 x 221	65	210	54	66
E12PBGSS	11.75 x 8.50 x 3.00	22.5 mm	Type 304	14	12	12.25 x 7.62	12.75 x 8.72	2.56	8.25	2.11	2.61
	298 x 216 x 76					311 x 194	324 x 221	65	210	54	66

Catalog number ending in 6 is Type 316L stainless steel.



30.5mm 4-WAY



22.5mm 4-WAY

NOTE: Cover bonding provision location varies based on pushbutton pattern.

Hole Arrangement



E1PBSS
E1PBSS6
E1PBGSS

E2PBSS
E2PBSS6
E2PBGSS

E3PBSS
E3PBSS6
E3PBGSS

E4PBSS
E4PBSS6
E4PBGSS

E6PBSS
E6PBSS6
E6PBGSS

E9PBSS
E9PBSS6
E9PBGSS

E12PBSS
E12PBSS6
E12PBGSS