

FRAME SHELF



APPLICATION

The ProLine G2 Frame Shelf mounts to the vertical hole pattern on a frame and provides a stationary surface for equipment.

SPECIFICATIONS

- 16-gauge (1.5 mm) steel

FINISH

- Painted polyester powder paint; RAL 7035 Light Gray
- Custom colors available

LOAD RATING

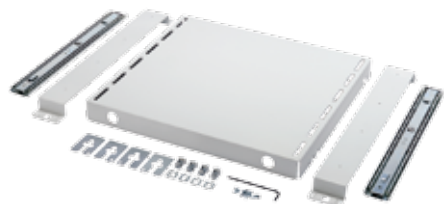
- 400 lb. (181 kg)

BULLETIN: P40

Catalog Number	Width (mm)	Width (in.)	Depth (mm)	Depth (in.)	Fits Frame Width x Depth mm
P2ASHF45	348	13.7	407	16.0	400x500
P2ASHF46	348	13.7	507	20.0	400x600
P2ASHF64	548	21.6	307	16.0	600x400
P2ASHF65	548	21.6	407	16.0	600x500
P2ASHF66	548	21.6	507	20.0	600x600
P2ASHF68	548	21.6	707	27.8	600x800
P2ASHF84	748	29.4	307	16.0	800x400
P2ASHF85	748	29.4	407	16.0	800x500
P2ASHF86	748	29.4	507	20.0	800x600
P2ASHF88	748	29.4	707	27.8	800x800
P2ASHF810	748	29.4	907	25.7	800x1000
P2ASHF104	948	37.3	307	16.0	1000x400
P2ASHF105	948	37.3	407	16.0	1000x500
P2ASHF106	948	37.3	507	20.0	1000x600
P2ASHF108	948	37.3	707	27.8	1000x800

WxD dimensions are in mm.

FRAME PULL-OUT SHELF



APPLICATION

ProLine G2 Frame Pull-Out Shelf allows easy access to shelf-mounted devices.

SPECIFICATIONS

- Mounts to the front and rear frame uprights
- The shelf is 16-gauge (1.5-mm) steel with 12-gauge (2.5-mm) steel supports

FINISH

- Painted polyester powder paint; RAL 7035 Light Gray
- Custom colors available

LOAD RATING

- 110 lb. (50 kg)

BULLETIN: P40

Catalog Number	Fits Frame Width mm	Width mm/in.	Depth mm/in.	Pull-Out mm/in.
P2ASHFP6	600	557 21.9	505 19.9	450 17.7
P2ASHFP8	800	757 29.8	505 19.9	450 17.7
P2ASHFP6EXT	600	557 21.9	705 27.8	670 26.4
P2ASHFP8EXT	800	757 29.8	705 27.8	670 26.4

FRAME PRINTER SHELF



APPLICATION

The ProLine G2 Frame Printer Shelf mounts directly to a modular frame and can be used for supporting a continuous feed printer or other applications where multiple pull-out shelves are desired.

SPECIFICATIONS

- Lower shelves are vertically adjustable
- The entire unit slides out 17 in. (431 mm) from the enclosure, allowing easy accessibility
- Fits 600- or 800-mm wide frames that are 600 mm deep or greater

FINISH

- Painted polyester powder paint; RAL 7035 Light Gray
- Custom colors available

BULLETIN: P40

Catalog Number	Width mm/in.	Depth mm/in.	Fits Frame Width mm
P2ASHP6	547 21.6	506 19.9	600
P2ASHP8	747 29.4	506 19.9	800

Frame Width dimensions are in mm.

INTERNAL BARRIER PANEL



APPLICATION

The Internal Barrier Panel is designed to mount along the horizontal plane, similar to the Frame Shelf, and separate the enclosure into multiple bays along the vertical. The Internal Barrier Panel would commonly be used in a partial door enclosure solution.

TOP MOUNTING MODULE



APPLICATION

The Top Mounting Module installs to the top of an enclosure providing space for cable management, and facilitating cable passage into the enclosure from above. The module is constructed from a mini ProLine frame, and as such is joinable to accommodate multi-bay solutions. Removable covers are supplied with the module for sealing purposes, while the standard Solid Top (sold separately or included with Industrial Package) is used to enclose the solution as it is mounted to the top of the module.

SPECIFICATIONS

- NEMA Type 12 environmental rating
- Solution includes frame, width and depth mounted covers, gaskets for sealing junction between top of frame and module,

SPECIFICATIONS

- Barrier and extender panels are 16-gauge (1.5mm), while mounting brackets are 14-gauge (1.75 mm)
- All mounting hardware included
- Polyester powder paint; RAL 7035 textured light gray standard

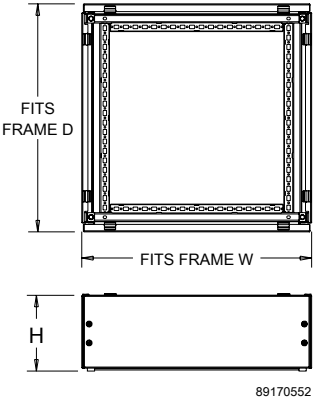
BULLETIN: P40

Standard Product

Catalog Number	Fits Frame WxD - mm
P2AIBP66	600 x 600
P2AIBP68	600 x 800
P2AIBP84	800 x 400
P2AIBP85	800 x 500
P2AIBP86	800 x 600
P2AIBP88	800 x 800
P2AIBP105	1000 x 500
P2AIBP106	1000 x 600
P2AIBP108	1000 x 800

and all installation hardware to secure to the top of a G2 frame. Solid Top sold separately, but also included with standard Industrial Package.

- Cover plates are 16-gauge (1.5 mm) mild steel, with a single ground stud per cover
- Polyester powder paint; RAL 7035 textured light gray standard
- 200mm and 300mm heights available



BULLETIN: P40

Standard Product 200mm Height

Catalog Number	Fits Frame Type	Fits Frame WxD - mm
P2TMM265	Single-Bay	600 x 500
P2TMM266	Single-Bay	600 x 600
P2TMM268	Single-Bay	600 x 800
P2TMM285	Single-Bay	800 x 500
P2TMM286	Single-Bay	800 x 600
P2TMM288	Single-Bay	800 x 800
P2TMM2105	Single-Bay	1000 x 500
P2TMM2106	Single-Bay	1000 x 600
P2TMM2108	Single-Bay	1000 x 800
P2TMM2125	Double-Bay	1200 x 500
P2TMM2126	Double-Bay	1200 x 600
P2TMM2165	Double-Bay	1600 x 500
P2TMM2166	Double-Bay	1600 x 600

Standard Product 300mm Height

Catalog Number	Fits Frame Type	Fits Frame WxD - mm
P2TMM366	Single-Bay	600 x 600
P2TMM386	Single-Bay	800 x 600
P2TMM3106	Single-Bay	1000 x 600
P2TMM3126	Double-Bay	1200 x 600