



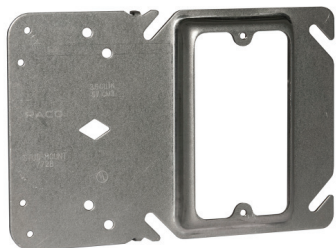
RACO Stud Mount Mud Rings

Application

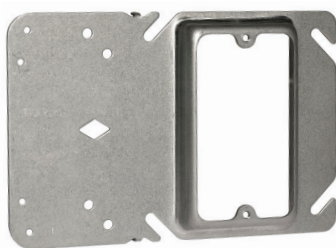
RACO Stud-Mount Mud Rings provide secure support for 4" square boxes and feature a built-in mud ring.

Product Features

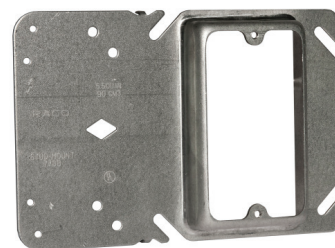
- Rigid bracket design eliminates the need for far-side support
- Ability to eliminate electrical boxes in low-voltage installations
- Offered in both single and two-gang
- Offered for 1/2", 5/8", and 3/4" dry wall
- Can be installed from both sides of steel studs
- Positive Posting Tabs ensure consistent alignment on stud
- Center window for accurate positioning
- Works with all box depths and stud sizes with no adjustment required
- Mounts quickly and easily to face of stud
- UL Listed



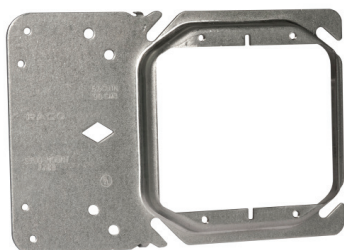
772B



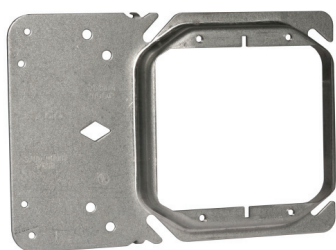
768B



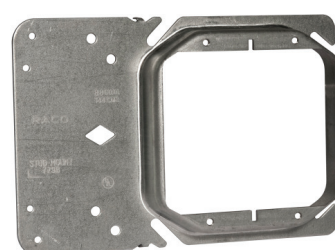
773B



778B



769B



779B

Catalog No.	4" Device Cover Description	Carton Qty.	Wt. Lbs. per 100	Carton Dimensions L x W x H	UPC-A Bar Code
772B	Stud Mount One Device Raised 1/2"	25	42.528	6.250" x 7.0" x 4.750"	050169500446
768B	Stud Mount One Device Raised 5/8"	25	44.908	12.380" x 7.0" x 4.750"	050169500453
773B	Stud Mount One Device Raised 3/4"	25	47.496	15.750" x 7.0" x 4.750"	050169500460
778B	Stud Mount Two Devices Raised 1/2"	20	37.085	9.25" x 7.0" x 4.750"	050169500477
769B	Stud Mount Two Devices Raised 5/8"	20	40.210	12.380" x 7.0" x 4.750"	050169500484
779B	Stud Mount Two Devices Raised 3/4"	20	42.745	15.750" x 7.0" x 4.750"	050169500491

RECEIVE A FREE SAMPLE OF THIS PRODUCT!

PLEASE FILL OUT ALL INFORMATION (Please Print)

SHIP TO NAME: _____

NAME OF COMPANY: _____

STREET ADDRESS: _____

STATE, ZIP CODE: _____

PHONE NUMBER: _____

WHAT DOES YOUR COMPANY DO?: _____

Part No.'s *(Please select one)*

772B 768B 773B 778B 769B 779B

EMAIL A COPY OF THIS FORM TO: rtbsamples@hubbell.com

