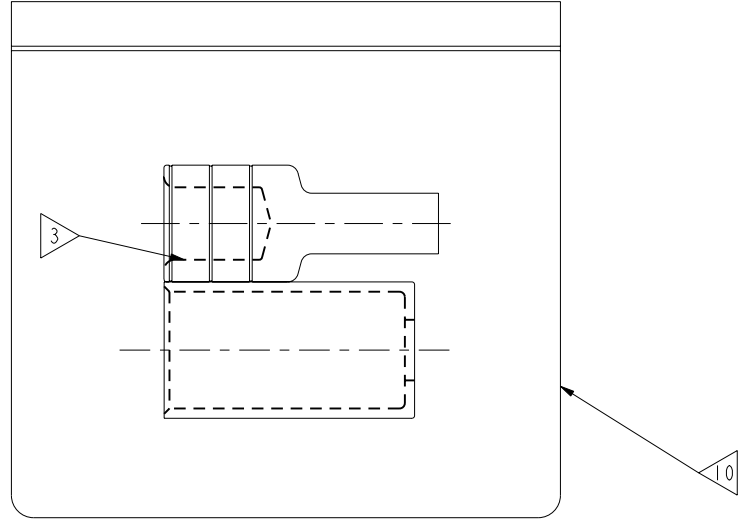
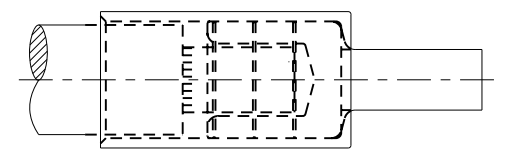
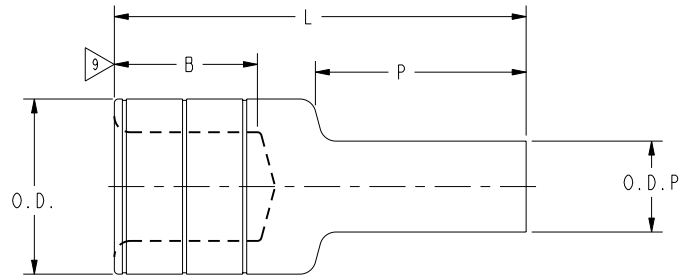


REV	DATE	DESCRIPTION	ECO	BY	C'H'K.
D	01/25/2013 00:00:00 AM	NOTES AND INSTALLATION TOOLINGS UPDATED AS PER ECO MARKUP	30020	AD	MA

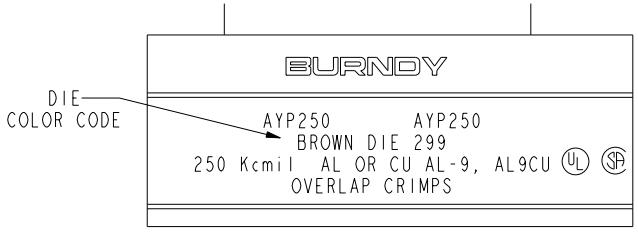
CATALOG NO.	ACCOMMODATES ALUMINUM CABLE: CONCENTRIC, COMPRESSED, COMPACT COPPER CABLE: CONCENTRIC ONLY	DIMENSIONS						INSTALLATION TOOLING (# CRIMPS)						DIELESS (# CRIMPS)	WIRE STRIP LENGTH
		B	LL	L	O.D	O.D.P	P	DIE INFORMATION		MECHANICAL	HYDRAULIC				
								COLOR CODE	DIE INDEX		MD6	Y34A	Y35, Y39 Y750, PAT750		
AYP4/0	4/0 STR. (.528 DIA.) 19 STR.	1.11 [28]	2.23 [57]	2.59 [66]	.86 [22]	.42 [11]	1.22 [31]	WHITE	298	W660 (4)	Y34A (2)	U28ART (2)	U28ART (2)	MY29-3 (1) OH25 (1) Y644 (1) Y81KFT (2)	1-1/16"
AYP250	250 Kcmil (.575 DIA.) 37 STR.	1.07 [27]	2.54 [65]	2.63 [67]	1.10 [28]	.47 [12]	1.34 [34]	BROWN	299	--	--	U31ART (2)	U31ART (2)	HYDRAULIC: Y644M (1) BAT644M (1) Y644 (1) Y81KFT (2)	1-1/8"
AYP300	300 Kcmil (.630 DIA.) 37 STR.			2.75 [70]	1.11 [28]	.53 [13]									
AYP350	350 Kcmil (.681 DIA.) 37 STR.			1.10 [28]	.57 [14]										
AYP400	400 Kcmil (.728 DIA.) 37 STR.			2.81 [71]	3.08 [78]	1.31 [33]									
AYP500	500 Kcmil (.813 DIA.) 37 STR.	1.07 [27]	2.81 [71]	3.08 [78]	1.31 [33]	.63 [16]	1.60 [41]	PINK	300	--	--	U34ART (2)	U34ART (2)		
AYP600	600 Kcmil (.893 DIA.) 61 STR.	1.59 [40]	3.69 [94]	3.67 [93]	1.46 [37]	.73 [19]	1.64 [42]	YELLOW	936	--	--	U39ART-2 (3)	U39ART-2 (3)		1-3/4"
AYP750	700 Kcmil (.964 DIA.) 61 STR. 750 Kcmil (.998 DIA.) 61 STR. 900 Kcmil COMPACT (1.005 DIA.) 61 STR.	1.59 [40]	3.69 [94]	3.79 [96]	1.46 [37]	.81 [21]	1.76 [45]	YELLOW	936	--	--	U39ART-2 (3)	U39ART-2 (3)	Y644 (1) PAT644 (1) Y81KFT (3) PAT81KFT (3)	1-3/4"



- NOTES:
- MATERIAL: CONNECTOR - ALUMINUM INSULATION COVER - E.P.D.M (SEE SA76839)
 - FINISH: TIN PLATED (CONNECTOR ONLY).
 - BARREL IS PARTIALLY FILLED WITH PENETROX™ AND SEALED.
 - SCRATCH BRUSHING OF ALL CONDUCTORS BEFORE MAKING INSTALLATION IS RECOMMENDED
 - REMOVED PER ECO 7081.
 - CATALOG #PUADP-1 ADAPTOR IS REQUIRED TO USE "U" DIES IN Y46 SERIES TOOLS.
 - OVERLAP CRIMPS.
 - ONLY THE CONCENTRIC CABLE DIAMETERS ARE SHOWN.
 - CONDUCTOR INSERTION LENGTH MINIMUM.
 - PACKAGED IN CLEAR POLYBAG.
 - DIMENSIONS IN BRACKETS [] ARE IN MILLIMETERS ROUNDED OFF TO THE NEAREST MILLIMETER, UNLESS OTHERWISE NOTED, AND ARE FOR REFERENCE ONLY.
 - FOR USE BY CUSTOMERS THAT HAVE THIS HYPRESS™. NO NEW Y34A HYPRESS™ TOOLS ARE BEING PROCESSED.
 - NOT CSA APPROVED FOR USE WITH COPPER CONDUCTOR.
 - UL LISTED FOR USE WITH COPPER OR ALUMINUM CONDUCTOR USIGN U-DIES OR Y81KFT SERIES OF DIELESS TOOLS.



VIEW AFTER INSTALLATION



TYPICAL LETTERING VIEW
CONNECTOR MARKING

- UL LISTED FOR USE WITH ALUMINUM CONDUCTOR ONLY USING Y644 DIELESS TOOLS.
- NOT UL LISTED OR CSA CERTIFIED WITH THIS TOOLING.
- USE Y644 OR PAT644 SERIES DIELESS HYPRESS™ ONLY WHEN INSTALLING 900 kcmil COMPACT ALUMINUM. MEETS UL TESTING REQUIREMENTS BUT IS NOT UL LISTED FOR USE WITH 900 COMPACT ALUMINUM.

TO ORDER BURNDY® PRODUCTS CALL
UNITED STATES
1-800-346-4175 (LONDONDERRY, NH)
CANADA:
1-800-361-6975 (QUEBEC)
1-800-387-6487 (ALL OTHER PROVINCES)
FOR PRODUCT INFO: <http://www.burndy.com>

WIRE CONNETOR ACCESSORY COMPRESSION EQUIPMENT ADAPATOR	
ITEM NO:	N/A
CAT. NO:	AYP-- HYPLUG™ (TABLE)
DRAWN BY:	SDC 04/09/73
CHECKER:	JPS 04/16/73
DSN APPVL:	ELA 10/10/73
MFG APPVL:	--
QA APPVL:	D VARIO 11/26/96
MKT APPVL:	P WERTHMAN 10/18/96
PROD FAM:	--
PROJECT #:	--
DOCUMENT TYPE:	Sales
REL LEVEL:	Released

SCALE: 1:1
DRAWING NO: SD075496
REV: D
SHEET 2 OF 2

REV: PE0200