

## Switched Enclosure Auxillary Contact

### Auxillary Contact

### Auxillary Contact

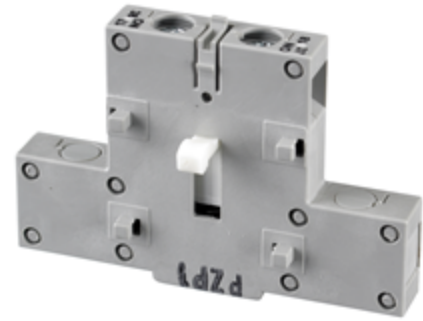
# HUBBELL

## Ordering Information

Description	UPC	Catalog Number
Auxiliary contact, 1 NO, A600 pilot duty, break before break (10A, 600V)	783585955131	HBLAC2

### Contact Type

Break before Break



## Standards

Listed to UL Standard  
Certified to CSA Standard

## Performance

### Electrical

Current Interrupting	Certified for current interrupting at full rated current voltage
Dielectric Voltage	Withstands 3,000V Min
Max. Working Voltage	600V RMS
Operations	Mechanical 10,000 cycles; Electrical 6,000 cycles

## Online Resources

eCatalog  
Installation Instructions

Dimensions in Inches (mm)

Hubbell Wiring Device-Kellems • Hubbell Incorporated (Delaware) • 40 Waterview Drive • Shelton, CT 06484

Phone (800) 288-6000 • Fax (800) 255-1031 • Specifications subject to change without notice.

