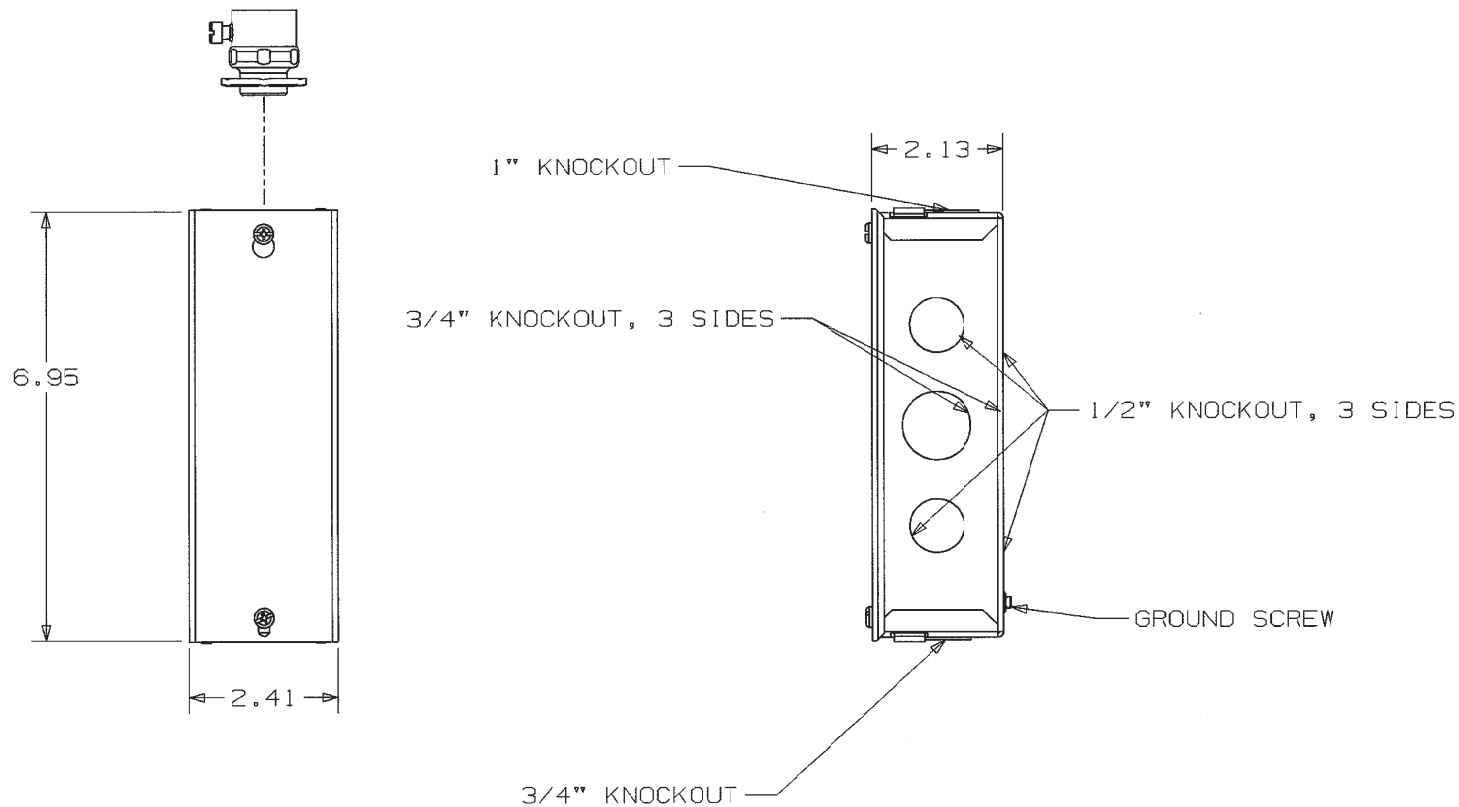
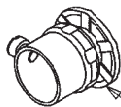


M-11000	2
---------	---



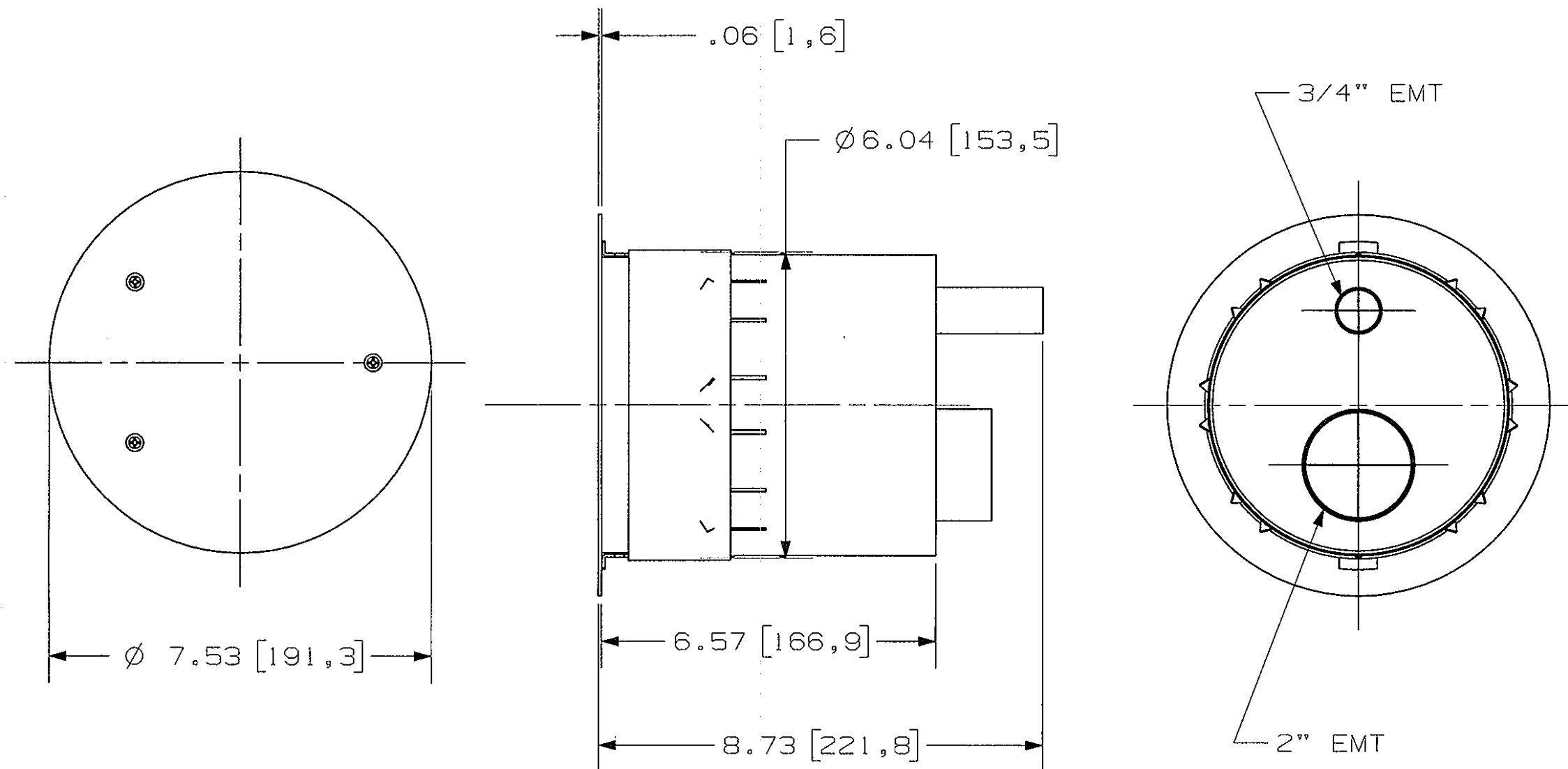
NOTES:

1. BOX VOLUME: 27 IN³/442 CM³
2. PART IS UL/CUL LISTED



- (1) 3/4" AND (1) 1" CONDUIT
SUPPLIED LOOSE INSIDE JUNCTION BOX

[illegible]



NOTES:

- 1) ALL DIMENSIONS ARE IN INCHES AND [MILLIMETERS]
2) JUNCTION BOX SIFRPTJB (NOT SHOWN) IS INCLUDED
WITH FLOOR FITTING CATALOG NUMBER SIF6PTFIT.
SEE DWG. M-11000 FOR DIMENSIONS OF JUNCTION BOX.
JUNCTION BOX SHIPPED LOOSELY WITH UNIT.

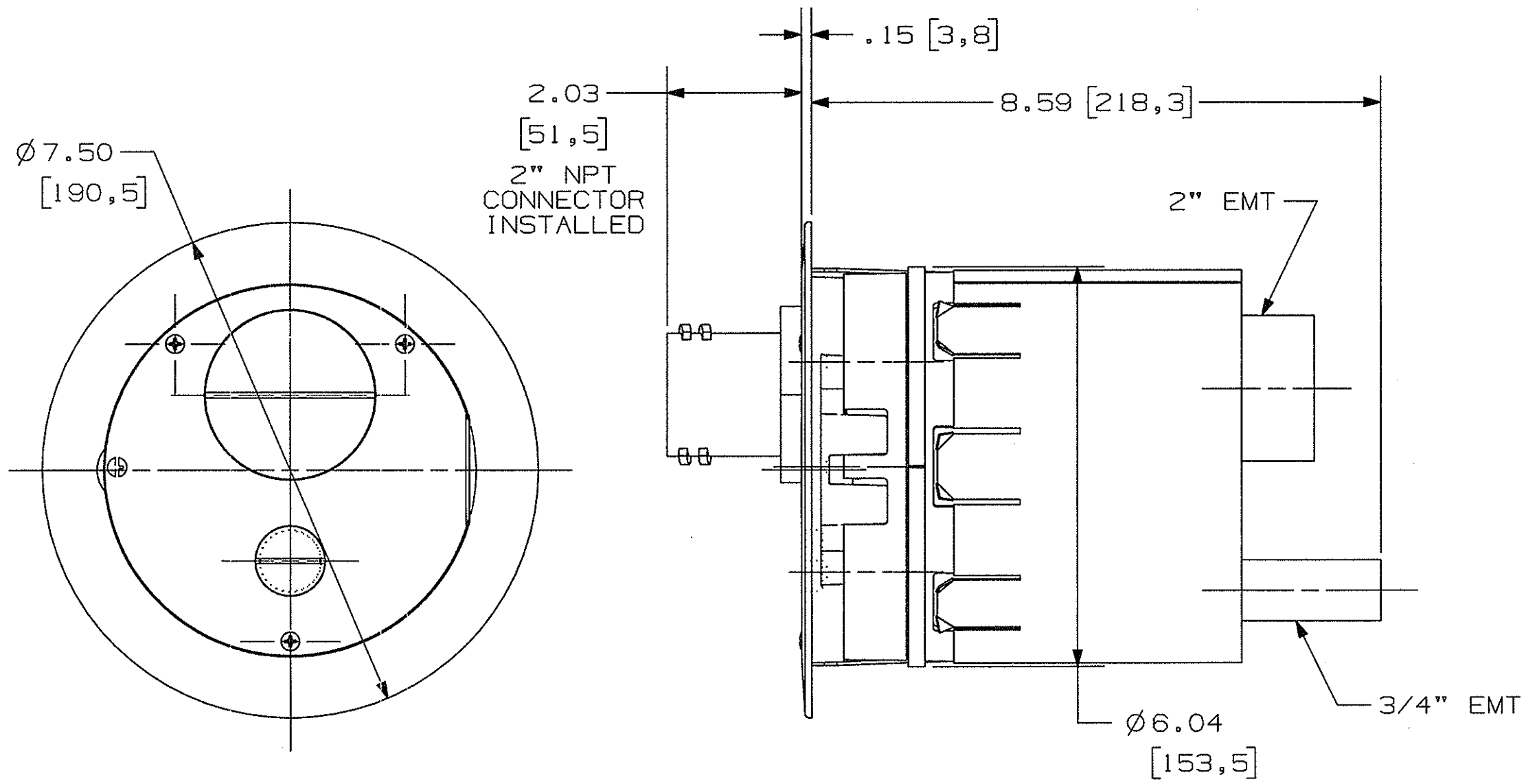
LIST OF PARTS		
DESCRIPTION	MATERIAL	FINISH
CAN WELDMENT	STEEL	ZINC PLATE
INSTALLATION PLATE	STEEL	ZINC PLATE
SUB-PLATE MTG. PLATE	STEEL	WHITE PAINT
STANDOFFS	STNLS. STEEL	ZINC PLATE
FIRE BARRIER, UPPER	FIRE BAR. MATL.	NATURAL
FIRE BARRIER, LOWER	FIRE BAR. MATL.	NATURAL
DIVIDER	STEEL	ZINC PLATE
WASHERS	FIBER	RED
MOUNTING SCREWS	STEEL	ZINC PLATE
SPACER	FIRE BAR. MATL.	BLACK
TAPE	PLASTIC	YELL./BLK

3	UPDATED IMAGES PER DCN20245	AD	12/13/13
2	UPDATED IMAGES, 8.73 WAS 8.71 6.48 WAS 6.45 DCN18755		4/13/12
1	RELEASED PER DCN18435		12/14/11
SYM	REVISIONS	APP	DATE

THE DESIGN AND DIMENSIONS OF THE
PRODUCT SHOWN ON THIS DRAWING ARE
SUBJECT TO CHANGE WITHOUT NOTICE

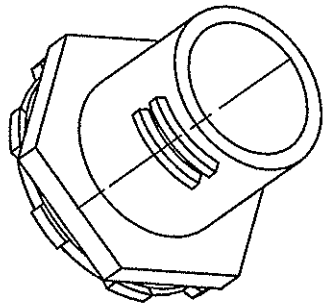
TITLE	SERVICE FITTING, FIRE RATED POKE THROUGH, 6 INCH DIAMETER
-------	-----------------------------------------------------------------

TOLERANCES UNLESS OTHERWISE SPECIFIED .XX = ± .01 .XXX = ± .005 ANGLES = ± 2°	WIRING DEVICE-KELLEMS HUBBELL INCORPORATED SHELTON, CT	
	DR. BY SRE	APP. BY
	TR. BY	SCALE 1:2
	CHK. BY	DATE 6/9/11



CATALOG NUMBER	COVER FINISH
SIR6FFBRS	BRASS PLATED
SIR6FFALU	BRUSHED ALUMINUM
SIR6FFNKL	SATIN NICKEL PLATE
SIR6FFBRZ	BRONZE PLATED
SIR6FFBLK	BLACK POWDER COAT PAINT

NOTES:
1) ALL DIMENSIONS ARE IN INCHES AND [MILLIMETERS]
2) JUNCTION BOX SIFRPTJB (NOT SHOWN) IS INCLUDED WITH UNIT. SEE DWG. M11000 FOR DIMENSIONS OF JUNCTION BOX.
JUNCTION BOX SHIPPED LOOSELY WITH UNIT.
3) ALL UNITS SUPPLIED WITH 3/4" & 2" NPT CONNECTORS, SHIPPED LOOSELY. FOR USE WITH NONMETALLIC LIQUIDTIGHT CONDUIT (NOT SUPPLIED).
UNIT SHIPPED WITH 3/4" & 2" NPT PLUGS INSTALLED.



LIST OF PARTS		
DESCRIPTION	MATERIAL	FINISH
CAN WELDMENT	STEEL	ZINC PLATE
STANDOFFS	STNLS. STEEL	NONE
MOUNTING PLATE	STEEL	ZINC PLATE
FIRE BARRIERS	FIRE BAR. MATL.	WHITE
FIRE BARRIERS	FIRE BAR. MATL.	GRAY
MOUNTING SCREWS	STEEL	ZINC PLATE
FLANGE RING	ALUMINUM	SEE TABLE
DOOR	ALUMINUM	SEE TABLE
DOOR GASKETS	FOAM RUBBER	BLACK
FIRE BARRIER COVER	STEEL	ZINC PLATE
WASHERS	FIBER	RED
3/4 CLOSURE PLUG	ZINC	SEE TABLE
2" CLOSURE PLUG	ALUMINUM	SEE TABLE
CONNECTORS	ZINC	ZINC
DIVIDER TUBE	PVC	WHITE

REPAIRABLE <input type="checkbox"/> NON-REPAIRABLE <input checked="" type="checkbox"/>			
B			
1	RELEASED PER DCN18435	1/4/12	
SYM	REVISIONS	APP	DATE

THE DESIGN AND DIMENSIONS OF THE PRODUCT SHOWN ON THIS DRAWING ARE SUBJECT TO CHANGE WITHOUT NOTICE	
TITLE FIRE RATED POKE THROUGH FURNITURE FEED ASSEMBLY 6 INCH DIAMETER	
TOLERANCES UNLESS OTHERWISE SPECIFIED FRACTIONS ± 1/64 DECIMALS ± .005 ANGLES ± 2°	WIRING DEVICE-KELLEMS HUBBELL INCORPORATED BRIDGEPORT, CT DR. BY SRE APP. BY TR. BY SCALE 1:2 CHK'D BY DATE 1/4/12