



- 48-Category 6A Jacks Side by Side Without Restrictions or Performance Degradation.
- Eliminates the Need for Horizontal Cable Management
- High Density Datacenter Applications
- Bulk and Green Packaging Reduces Excess Waste on the Job

#### FEATURES

- High Density Form Factor Saves Space in the Datacenter
- Fits all Hubbell HXJ and HJ Jacks.
- 48-Ports in 1 rack unit.
- Opens up rack real-estate.
- Staggered design simplifies installation and removal of jacks.
- Color Coding - Jacks are available in 14 different color offerings for distinctive color-coding.

#### SPECIFICATIONS

- Panel material: 2-piece welded construction.
- Durable, black powder coat finish.
- Dimensions and mounting holes per CEA-310-E.

#### STANDARDS/LISTINGS/VERIFICATIONS

- UL Listed 1863

## UDX-Series Angled 1U 48-Port

#### Rigidity

Rolled Edge Construction provides rugged strength to eliminate flex during installation

#### Labeling

Center port identification for easy MAC's



Panel shown loaded with HJ6A Jacks

#### Versatility

Fits all HJ and HXJ Jacks

#### High Density

48 Jacks in 1 RMU

#### Capacity

Ideal for higher density applications for easy patch cord routing

Hubbell's new UDX48A1U High-Density jack panel features 48-ports in a 1U angled configuration, doubling the port density within a standard rack space. The UDX 48-port/1U jack angled panel offers the ideal solution for data centers, ISP (Internet Service Providers), content delivery providers and other applications where cabinet and/or rack space is at an absolute premium.

The angle of the panel eliminates the need for additional horizontal cable management, allowing for more connections within a rack or cabinet. The UDX panel provides add-as-you-go flexibility, changeability, mixed jack performance and color-coding to accommodate multiple applications.

The UDX series patch panels provide a rugged, feature rich, solution supporting today's high density applications. Don't jeopardize your network, Hubbell's UDX48A1U High-Density jack panel provides a migration path for tomorrow's emerging network applications.

#### APPLICATIONS

- Data centers and IDF Build Outs
- High Density Switch Ports
- Rack and Cabinet Deployment



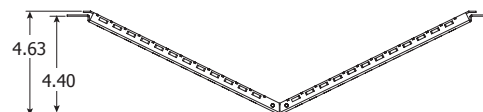
## ORDERING INFORMATION

## NEXTSPEED® UDX-Series Angled 1U 48-Port

Description	Catalog Number
Angled 1U 48-Port Jack Panel	<b>UDX48A1U</b>
Standard 1U 48-Port Jack Panel	<b>UDX48E1U</b>



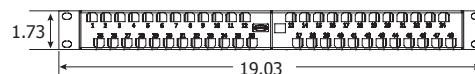
## DIMENSIONS



## RELATED PRODUCT

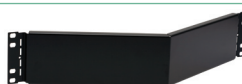
## Rear Cable Management Bars

Description	Catalog Number
Screws to rear flange of 19" rack. Holds each wire to minimize ANEXT and maximize performance.	<b>CMBR</b>



## Angled Blank Panels

Description	Height	Color	Catalog Number
Blank Panel	1U (1.75")	Black	<b>ABP175</b>
	2U (3.50")	Black	<b>ABP350</b>



## NEXTSPEED® Ascent C6A Component Jack

1 Jack per package	25 Jacks per package
<b>HJ6AXX</b>	<b>HJ6AXX25</b>



AL=Almond	BK=Black	B=Blue	EL=Electric Ivory	GL=Gold	GY=Gray	GN=Green	LA=Light Almond
OW=Office White	OR=Orange	P=Purple	R=Red	W=White	Y=Yellow	BN=Brown	

## ACCESSORIES

## NEXTSPEED® Ascent Category 6A Cable

Description	Plenum Spool	Riser Spool
Category 6A UTP Cable	<b>C6ASPXX</b>	<b>C6ASRXX</b>

B=Blue	GY=Gray	W=White	Y=Yellow	G=Green	OR=Orange
--------	---------	---------	----------	---------	-----------

XX = Cable Color Options

XX = MTO Cable Color Options

## NEXTSPEED® Ascent Category 6A Patch Cords

Color	Catalog Number
Gray	<b>HC6AxxXX</b>

xx Standard Colors - B=Blue; GY=Gray.

XX Standard Lengths - 01=1'; 03=3'; 05=5'; 07=7'; 10=10'; 15=15'; 20=20'

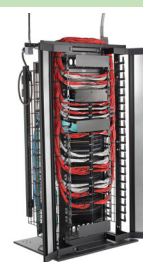


## INTEGRATED SOLUTIONS



## Cross-Connect Solutions

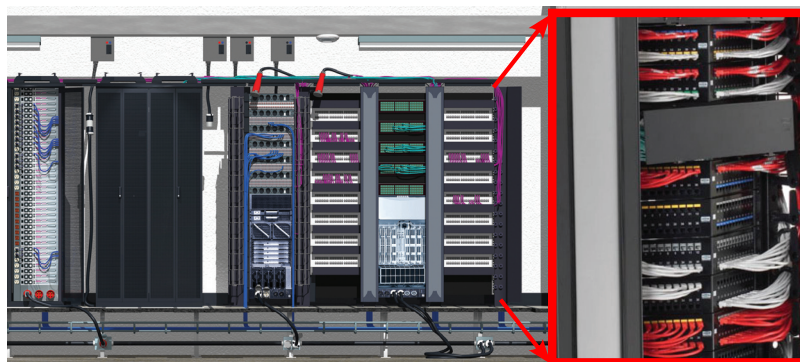
- Data Center Solutions
- XXL Cable Organizers
- NEXTFRAME® Cable Management
- Velcro® Cable Management
- ShieldBond Grounding Systems
- NEXTSPEED Ascent Horizontal Cable
- BIDnet™



## TYPICAL APPLICATION

Cat 6A - 10 Gigabit Ethernet has become the standard for connecting active gear in data centers.

BIDnet™ Cat 6A assemblies provide simplicity between switches, servers and patch panels



Cat 6A delivers high performance computing (HPC) to the desktop.

**HUBBELL®**  
Premise Wiring

[www.hubbell-premise.com](http://www.hubbell-premise.com)



Hubbell Premise Wiring • Hubbell Incorporated (Delaware) • 23 Clara Drive • Suite 103 • Mystic, CT 06355 • Phone (800) 626-0005 • FAX (860) 535-8328  
Printed in U.S.A. Specifications subject to change without notice.

® is a registered trademarks of Hubbell Incorporated.

PLDC003 12/10