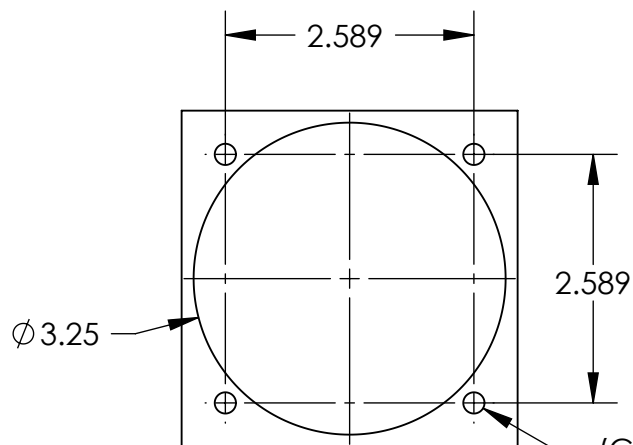
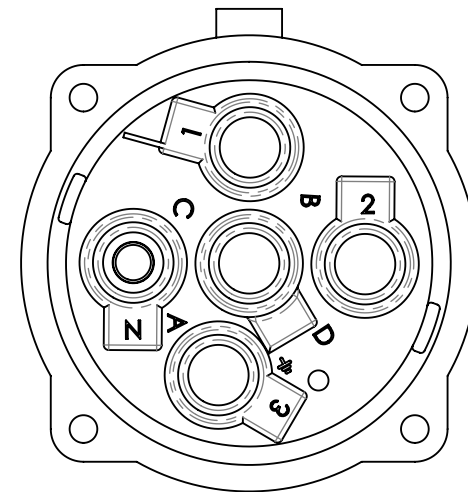
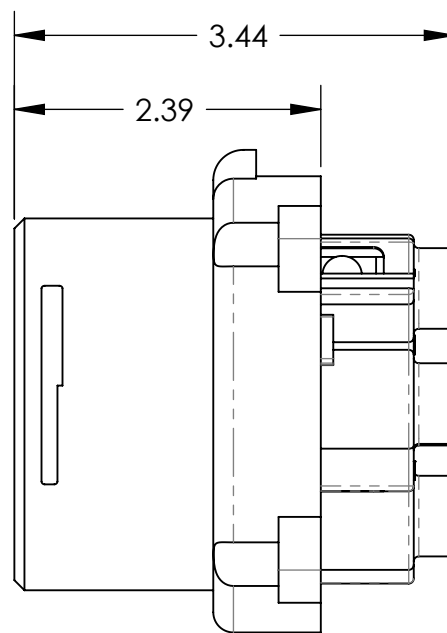
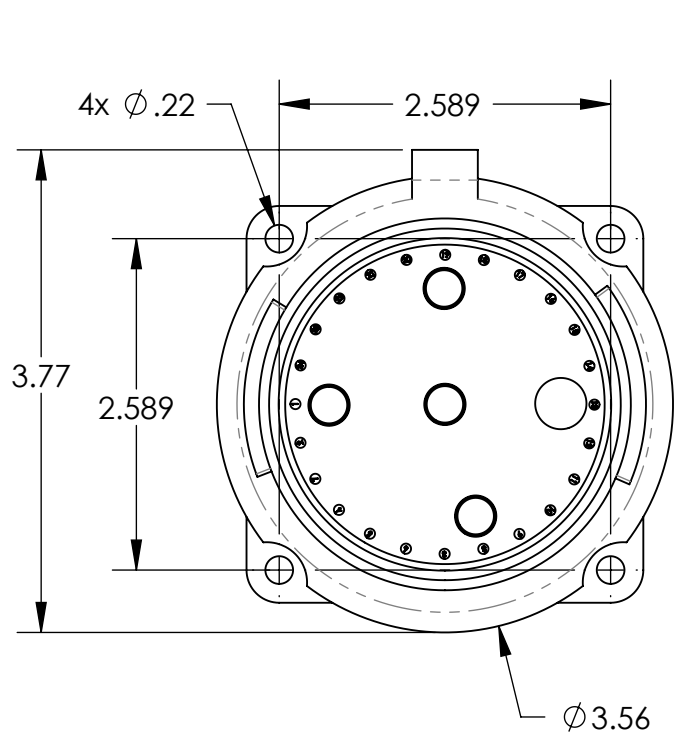
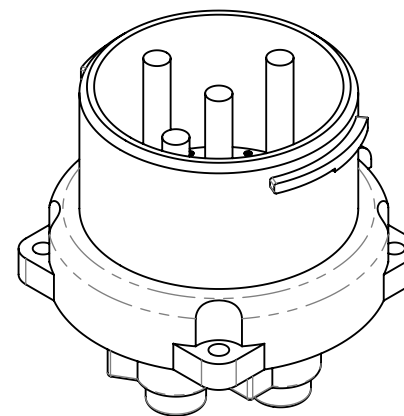


This drawing is the property of MELTRIC Corporation, Franklin (Milwaukee), Wisconsin, USA. Any unauthorized copying of this drawing by any means, ENG/RD/06 REV: 20 ISSUED DATE: 11/15/11 or disclosure of its contents to any person not authorized by MELTRIC Corporation or its agents to receive it, is strictly prohibited.



ENTRY HOLE PATTERN

4X Ø.221
(CLEARANCE FOR
10-32 HARDWARE)



| TOLERANCES UNLESS OTHERWISE SPECIFIED | | | | MELTRIC CORPORATION | | | |
|--|--|--|--|---------------------|--|------------------|--|
| MACHINED SURFACES $\sqrt[125]{\text{MAX}}$ | | GROUND SURFACES $\sqrt[32]{\text{MAX}}$ | | DRAWN | | APPROVED | |
| ANGLE TOLERANCE $\pm 1^\circ$ | | REMOVE BURRS & SHARP EDGES TO .015 MAX. | | DATE: | | SCALE | |
| DIMENSIONS SHOWN IN OVALS ARE INSPECTION DIMENSIONS. | | SHEET: 1 OF 1 | | DRAWING TITLE: | | MATERIAL: | |
| ENGLISH | | 0.X ± 0.05 0.XX ± 0.01 0.XXX ± 0.005 | | DS60 POLY INLET | | BLUE POLY CASING | |
| | | PART NUMBER | | REVISION | | | |
| | | 33-68xxx | | | | | |