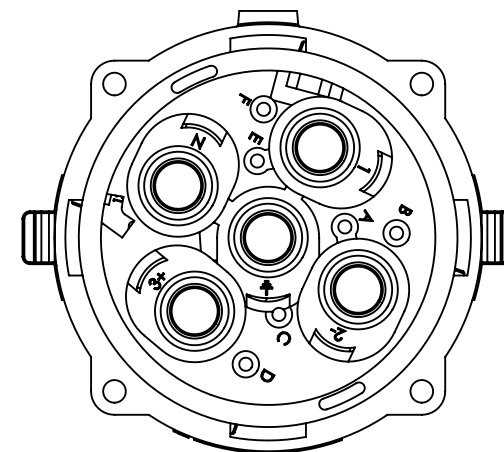
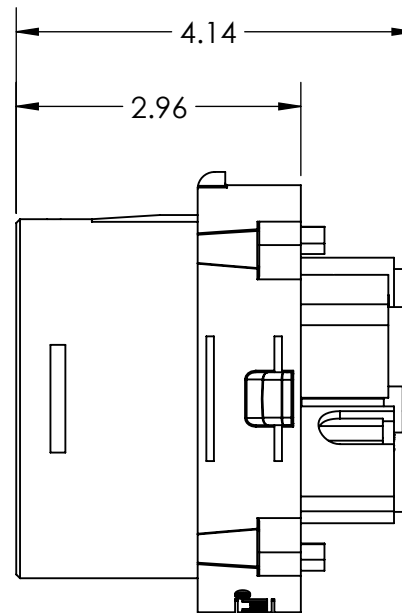
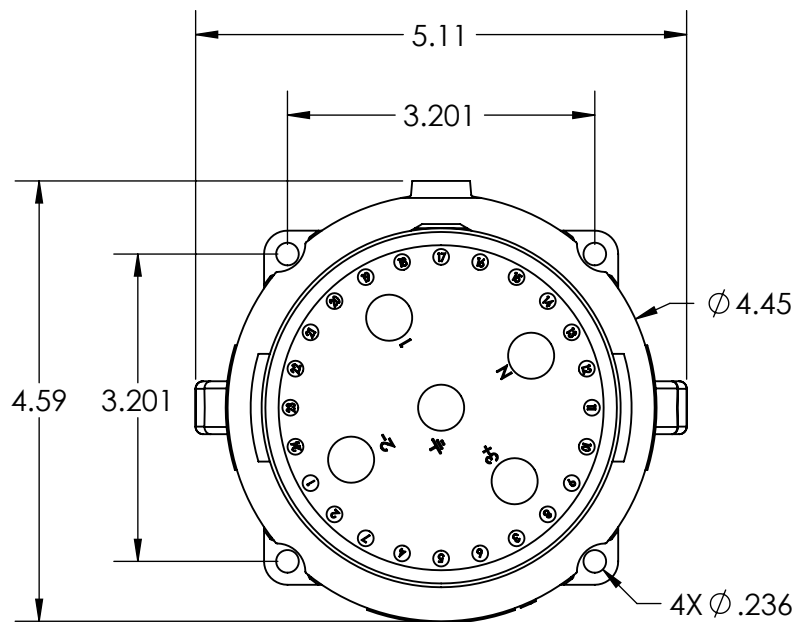
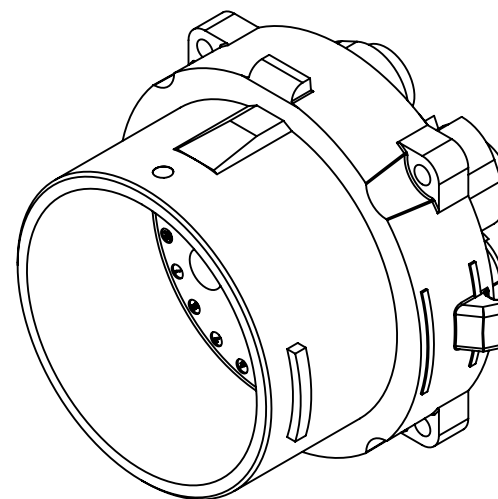
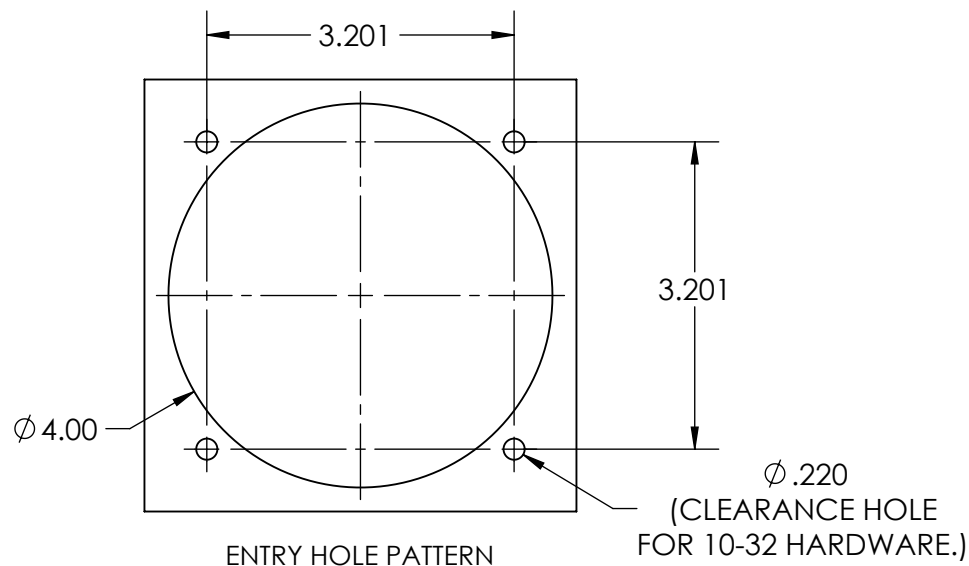
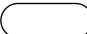


This drawing is the property of MELTRIC Corporation, Franklin (Milwaukee) Wisconsin, USA. Any unauthorized copying of this drawing by any means, ENG/RD/06 REV: 20 ISSUED DATE: 11/15/11 or disclosure of its contents to any person not authorized by MELTRIC Corporation or its agents to receive it, is strictly prohibited.



(REAR VIEW)



TOLERANCES UNLESS OTHERWISE SPECIFIED		MELTRIC CORPORATION		
MACHINED SURFACES $\sqrt{125 \text{ MAX}}$	ENGLISH 0.X ± 0.05 0.XX ± 0.01 0.XXX ± 0.005	DRAWN	APPROVED	
GROUND SURFACES $\sqrt{32 \text{ MAX}}$		DATE:	SCALE	DRAWING TITLE:
ANGLE TOLERANCE $\pm 1^\circ$			NTS	DS100 POLY INLET
REMOVE BURRS & SHARP EDGES TO .015 MAX.		SHEET: 1 OF 1	PART NUMBER	MATERIAL: BLUE POLY CASING
 DIMENSIONS SHOWN IN OVALS ARE INSPECTION DIMENSIONS.			33-98xxx	REVISION