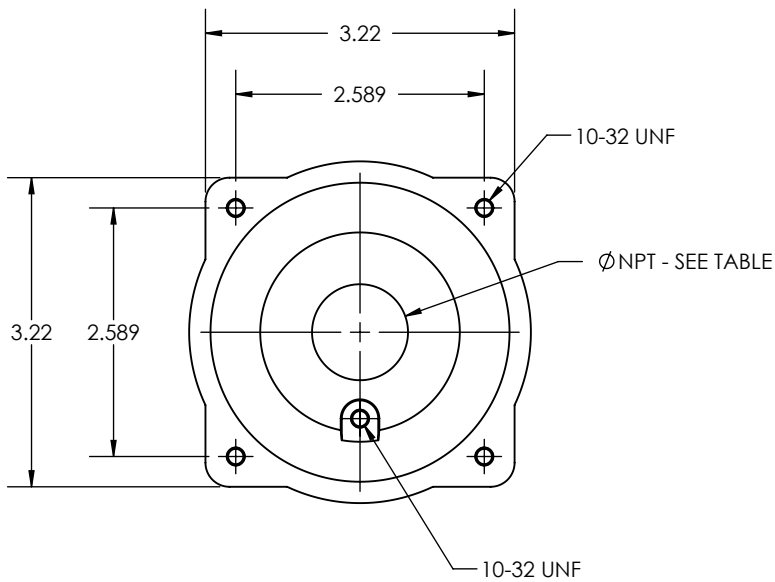
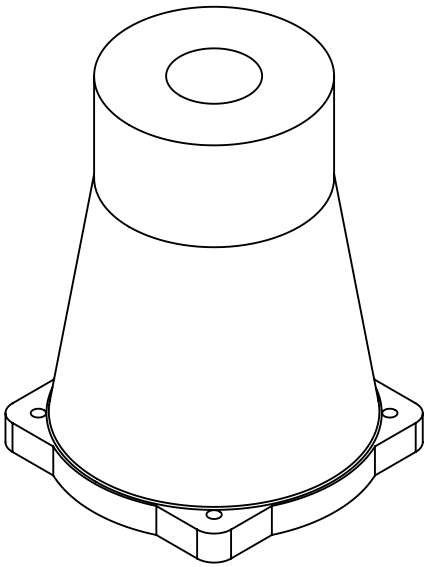
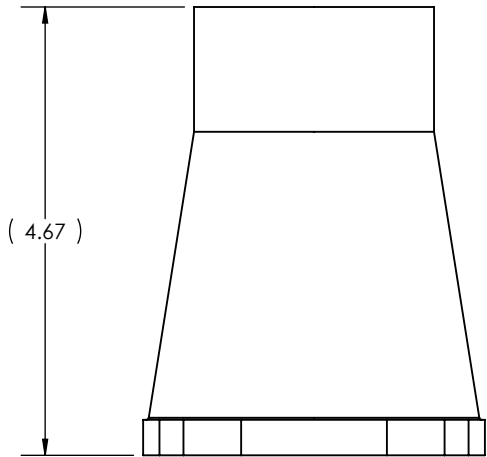


This drawing is the property of MELTRIC Corporation, Franklin (Milwaukee), Wisconsin, USA. Any unauthorized copying of this drawing by any means, or disclosure of its contents to any person not authorized by MELTRIC Corporation or its agents to receive it, is strictly prohibited. ENG/RD/06 REV: 20 ISSUED DATE: 11/15/11



PART NUMBER	THREAD SIZE
6H12	1/2" NPT
6H34	3/4" NPT
6H1	1" NPT
6H114	1 1/4" NPT
6H112	1 1/2" NPT


TOLERANCES UNLESS OTHERWISE SPECIFIED

MACHINED SURFACES  $\sqrt[125]{\text{MAX}}$

GROUND SURFACES  $\sqrt[32]{\text{MAX}}$

ANGLE TOLERANCE  $\pm 1^\circ$

REMOVE BURRS & SHARP EDGES TO .015 MAX.


 DIMENSIONS SHOWN IN OVALS ARE INSPECTION DIMENSIONS.

ENGLISH

0.X  $\pm 0.05$

0.XX  $\pm 0.01$

0.XXX  $\pm 0.005$

 **MELTRIC CORPORATION**

DRAWN

APPROVED

DRAWING TITLE:

METAL THREADED HANDLE

DATE:

SCALE

NTS

MATERIAL:

PAINTED METAL

SHEET:

1 OF 1

PART NUMBER

6Hxxx

REVISION

© Copyright MELTRIC Corporation, Franklin, Wisconsin, USA. All rights reserved. L:\Web Site\Web Site New\Drawing Files\DS60\