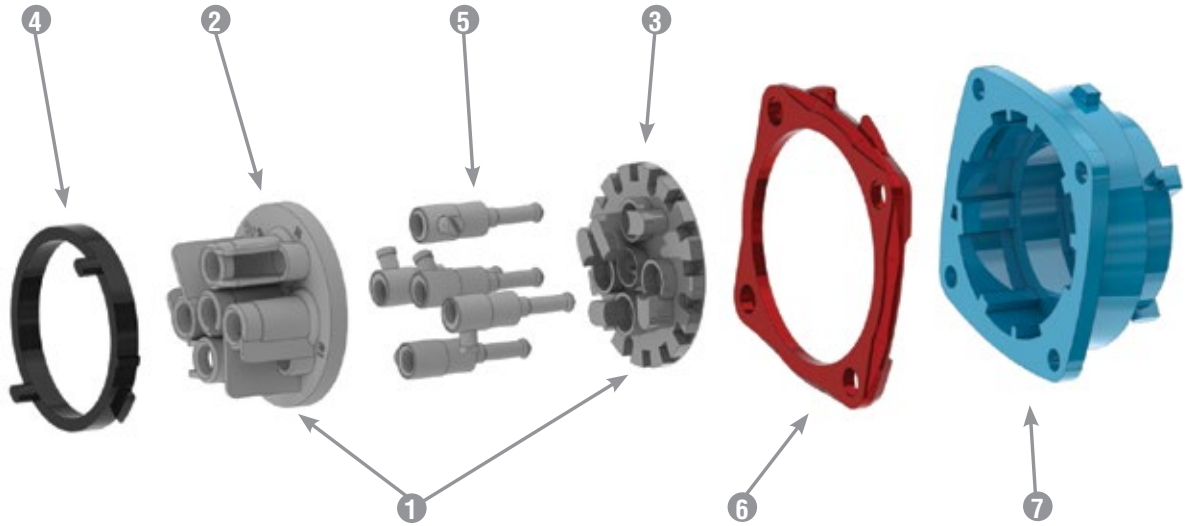




Spare Parts Male Configuration



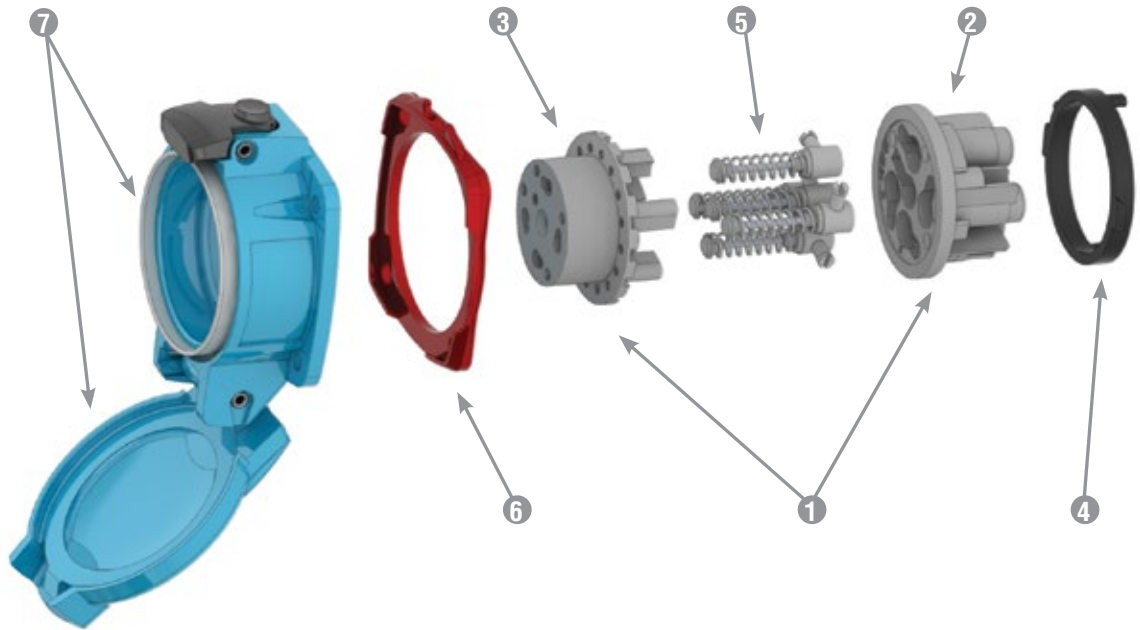
		PN20 POLY	PN20 METAL	PN20 HT METAL
1 = Plug Interior		01-2A010*	01-2A010*	01-2A010-185*
2 = Interior Bottom		01-2A010-B	01-2A010-B	01-2A010-185-B
3 = Interior Top		01-2A010-T*	01-2A010-T*	01-2A010-185-T*
4 = Locking Ring		01-NA583	09-2A583	09-2A583-185
5 = Plug Contact		01-2A011	01-2A011	01-2A011-185
6 = Ground Contact		01-2A019	01-2A019	01-2A019-185
6 = Device Gasket	208V	61-1AB26	61-1AB26	-
	250V	61-1AC26	61-1AC26	-
	480V	61-1AR26	61-1AR26	-
	125V	61-1AC26	61-1AC26	-
7 = Plug Casing		01-NA014**	09-NA014**	09-2A014-185**

* Voltage and phasing positions must be specified (5th, 6th & 7th digit of Part #) to duplicate your shutter and alignment notches.

** For appropriate labeling on a device, please specify voltage, phasing, and product type.

Spare Parts Female Configuration

PN



	PN20 POLY	PN20 METAL	PN20 HT METAL
① = Receptacle Interior	01-2A020*	01-2A020*	01-2A020-185*
② = Interior Bottom	01-2A020-B	01-2A020-B	01-2A020-185-B
③ = Interior Top	01-2A020-T*	01-2A020-T*	01-2A020-185-T*
④ = Locking Ring	01-NA583	09-2A583	09-2A583-185
⑤ = Receptacle Contact	01-2A021	01-2A021	01-2A021-185
⑥ = Ground Contact	01-2A029	01-2A029	01-2A029-185
⑥ = Device Gasket	<div style="display: flex; align-items: center;"> <div style="width: 20px; height: 10px; border-radius: 5px; background-color: #004a7c; color: white; margin-right: 5px;">208V</div> <div style="margin-right: 5px;">61-1AB26</div> </div> <div style="display: flex; align-items: center; margin-top: 2px;"> <div style="width: 20px; height: 10px; border-radius: 5px; background-color: #e69d00; color: white; margin-right: 5px;">250V</div> <div style="margin-right: 5px;">61-1AC26</div> </div> <div style="display: flex; align-items: center; margin-top: 2px;"> <div style="width: 20px; height: 10px; border-radius: 5px; background-color: #c00000; color: white; margin-right: 5px;">480V</div> <div style="margin-right: 5px;">61-1AR26</div> </div> <div style="display: flex; align-items: center; margin-top: 2px;"> <div style="width: 20px; height: 10px; border-radius: 5px; background-color: #e69d00; color: white; margin-right: 5px;">125V</div> <div style="margin-right: 5px;">61-1AC26</div> </div>	<div style="margin-right: 5px;">61-1AB26</div> <div style="margin-right: 5px;">61-1AC26</div> <div style="margin-right: 5px;">61-1AR26</div> <div style="margin-right: 5px;">61-1AC26</div>	-
⑦ = Recept Casing with Lid IP54/IP55	01-SA024**	09-SA024**	09-2A024-185**
⑦ = Recept Casing with Lid IP66+IP67	01-NA024**	09-NA024**	-

* Voltage and phasing positions must be specified (5th, 6th & 7th digit of Part #) to duplicate your shutter and alignment notches.

** For appropriate labeling on a device, please specify voltage, phasing, and product type.

PN

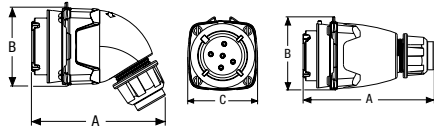


Dimensions

Inlet – Provided in inches

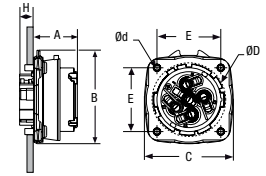
Dimensions are for reference only and may change depending on accessories used. For precise dimensions contact Meltric Engineering.

plug



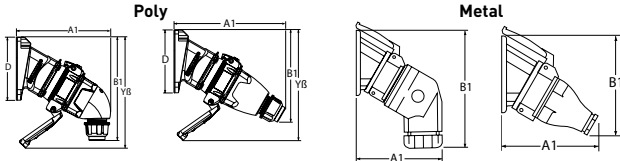
PRODUCT	A	B	C
PN/PN7/PN12 angled	3.90	3.15	2.28
PN/PN7/PN12 straight	4.33	2.40	2.28

inlet



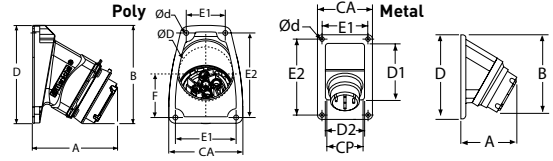
PRODUCT	A	B	C	E	H	Ød	ØD
PN/PN7/PN12	1.14	2.40	2.28	1.65	0.35	0.18	1.91

30° inclined inlet/angle with connector



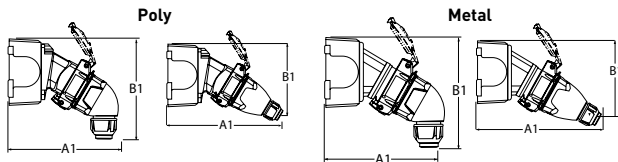
PRODUCT	A1	B1	D	Yβ
PN/PN7/PN12 angled poly	5.31	5.83	3.54	6.22
PN/PN7/PN12 straight poly	6.26	5.20	3.54	6.22
PN/PN7/PN12 angled metal	5.43	6.57		
PN/PN7/PN12 straight metal	4.84	5.43		

30° inlet/angle



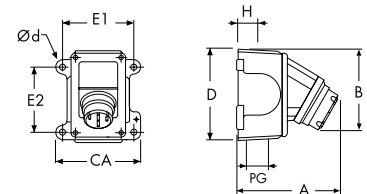
PRODUCT	A	B	CA	D	D1	D2	E1	E2	F	Ød	ØD
PN/PN7/PN12 poly	3.07	3.58	2.68	3.54			1.42	3.07	1.57	0.18	1.97
PN/PN7/PN12 metal	2.56	4.17	2.99	4.21	3.74	2.56	2.48	3.74		0.24	

30° inclined inlet/angle/ junction box with connector



PRODUCT	A1	B1
PN/PN7/PN12 angled poly	7.52	6.30
PN/PN7/PN12 straight poly	6.73	5.67
PN/PN7/PN12 angled metal	7.91	6.69
PN/PN7/PN12 straight metal	7.32	5.55

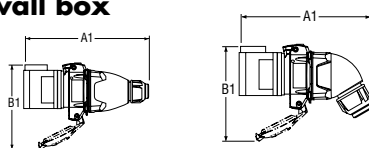
inlet/angle/ metal junction box



PRODUCT	A	B	CA	D	E1	E2	H	PG	Ød
PN/PN7/PN12 poly	4.53	4.06	4.40	4.57	4.19*	2.78	1.18	1.00	0.25
PN/PN7/PN12 metal	5.04	4.29	4.40	4.57	4.19*	2.78	1.18	1.00	0.25

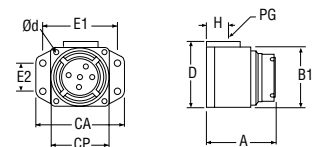
* Note: this dimension changed on 7/1/2014 from 3.75" to 4.19".

inlet/straight wall box with connector



PRODUCT	A1	B1
PN/PN7/PN12 angled	6.34	3.58
PN/PN7/PN12 straight	6.02	2.76

inlet/straight wall box



PRODUCT	A	B	CA	CP	D	E1	E2	H	PG	Ød
PN/PN7/PN12	2.60	2.17	3.07	2.17	2.40	2.52	0.94	0.69	0.50	0.22

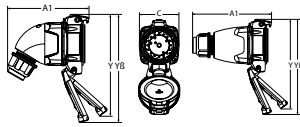


Dimensions

Receptacle – Provided in inches

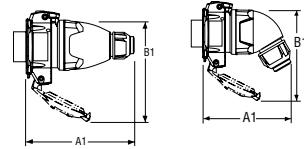
Dimensions are for reference only and may change depending on accessories used. For precise dimensions contact Meltric Engineering.

connector



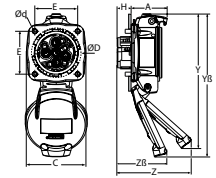
PRODUCT	A1	C	Y	YB
PN/PN7/PN12 angled	4.17	2.28	5.20	5.51
PN/PN7/PN12 straight	4.57	2.28	5.20	5.51

receptacle with plug



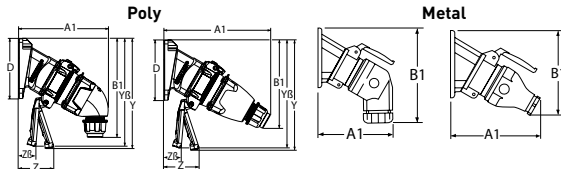
PRODUCT	A1	B1
PN/PN7/PN12 angled	4.61	2.99
PN/PN7/PN12 straight	4.72	2.99

receptacle



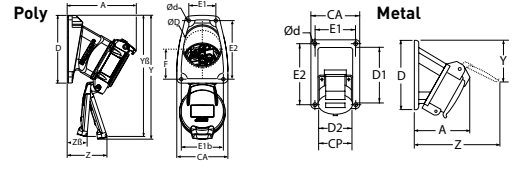
PRODUCT	A	C	E	H	Y	YB	Z	ZB	Ød	ØD
PN/PN7/PN12	1.38	2.28	1.65	0.55	5.20	5.51	2.32	1.38	0.18	1.91

30° inclined receptacle/angle with plug



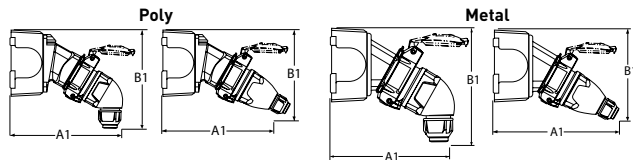
PRODUCT	A1	B1	D	Y	YB	Z	ZB
PN/PN7/PN12 angled poly	5.24	5.87	5.54	6.50	6.34	1.57	0.51
PN/PN7/PN12 straight poly	6.26	5.20	3.54	6.50	6.34	1.57	0.51
PN/PN7/PN12 angled metal	5.43	6.57					
PN/PN7/PN12 straight metal	4.84	5.43					

30° receptacle/angle



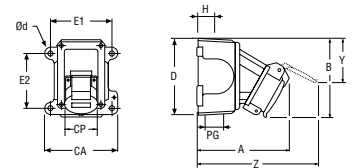
PRODUCT	A	CA	CP	D	D1	D2	E1	E1b	E2	Y	Z	ZB	Ød	ØD
PN/PN7/PN12 poly	3.62	2.68		3.54			1.42	2.20	3.07	6.50	1.57	0.51	0.18	1.97
PN/PN7/PN12 metal	3.15	2.99	2.05	4.21	3.74	2.56	2.48	2.48	3.74	6.38	2.52			0.24

30° inclined recept/angle/ junction box w/plug



PRODUCT	A1	B1
PN/PN7/PN12 angled poly	7.13	6.30
PN/PN7/PN12 straight poly	6.93	5.16
PN angled metal	7.91	6.69
PN/PN7/PN12 straight metal	7.32	5.55

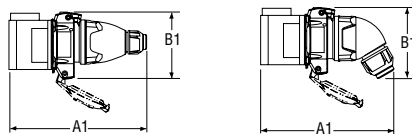
receptacle/angle/ metal junction box



PRODUCT	A	B	CA	CP	D	E1	E2	H	PG	Y	Z	Ød
PN/PN7/PN12 poly	5.24	4.45	4.40	2.24	4.57	4.19*	2.78	1.18	1.00	6.10	4.61	0.25
PN/PN7/PN12 metal	5.63	4.84	4.40	2.05	4.57	4.19*	2.78	1.18	1.00	6.50	5.00	0.25

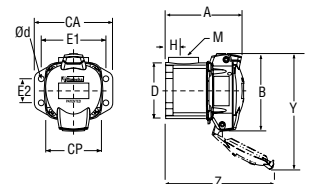
* Note: this dimension changed on 7/1/2014 from 3.75" to 4.19".

receptacle/straight wall box with plug



PRODUCT	A1	B1
PN/PN7/PN12 angled	5.35	3.11
PN/PN7/PN12 straight	6.38	3.01

receptacle/straight wall box



PRODUCT	A	B	CA	CP	D	E1	E2	H	PG	Y	Z	Ød
PN/PN7/PN12	2.97	3.00	3.07	2.17	2.39	2.52	0.94	0.69	0.50	5.04	4.49	0.22