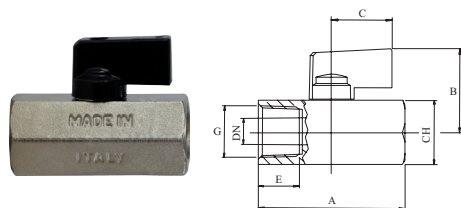


CHROME PLATED BRASS MINI BALL VALVE**VALVES****ITALIAN CHROME PLATED BRASS MINI BALL VALVE**

ISO 9002 Manufacturer

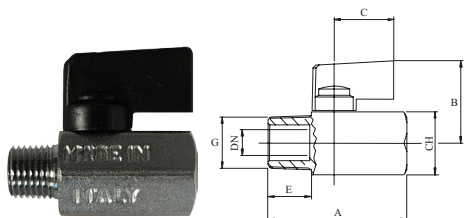
FEATURES

- Solid chrome plated brass ball
- Max working pressure 235 psi will handle 300psi@75° F
- Longer body style for longer, deeper thread connections
- One piece drawn sand blasted chrome plated body.
- Each valve is seal tested for maximum safety.
- Double seal system allows valve to be operated in both directions making installation easier.
- Blowout-proof brass stem.
- NPT taper ANSI B1.20.1 threads.
- 32°F to +176°F temperature.
- 1/4 Turn Aluminium handle with mechanical stop.
- NSF Approved valves available upon request!
- Not lead free

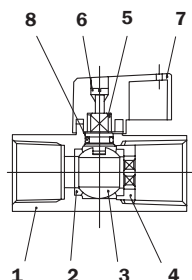
Female x Female

Made in Italy

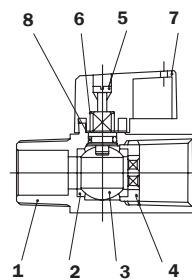
| Part# | Size | | Dimension Inches | | | | | | | |
|---------|------|------|------------------|------|-----|------|------|------|----------|------------|
| | G | DN | A | B | C | E | CH | WTG | Box/Case | List Price |
| 46-922I | 1/4" | 0.31 | 1.81 | 1.17 | 0.9 | 0.51 | 0.83 | 0.24 | 50/200 | 15.98 |
| 46-923I | 3/8" | 0.31 | 1.85 | 1.17 | 0.9 | 0.51 | 0.83 | 0.22 | 50/200 | 15.98 |
| 46-924I | 1/2" | 0.39 | 2.18 | 1.26 | 0.9 | 0.61 | 0.98 | 0.32 | 30/120 | 18.43 |

Male x Female

| Part# | Size | | Dimension Inches | | | | | | | |
|---------|------|------|------------------|------|-----|-----|------|------|----------|------------|
| | G | DN | A | B | C | E | CH | WTG | Box/Case | List Price |
| 46-903I | 1/4" | 0.31 | 1.75 | 1.17 | 0.9 | .40 | 0.83 | 0.20 | 50/200 | 15.54 |
| 46-904I | 3/8" | 0.31 | 1.81 | 1.17 | 0.9 | .41 | 0.83 | 0.20 | 50/200 | 15.54 |
| 46-905I | 1/2" | 0.39 | 2.14 | 1.26 | 0.9 | .52 | 0.98 | 0.30 | 40/160 | 17.28 |



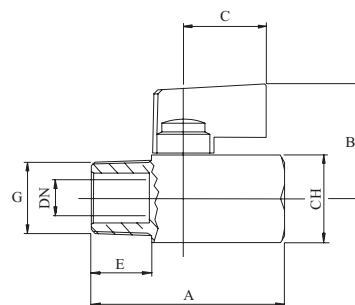
| POS | Components | Materials | N |
|-----|------------|---------------------|---|
| 1 | Body | CW517N Forged Brass | 1 |
| 2 | Ball Seats | P.T.F.E | 2 |
| 3 | Ball | CW517N CP Brass | 1 |
| 4 | Ring Unit | CW614N Brass | 1 |
| 5 | Stem | CW614N Brass | 1 |
| 6 | Screw | UNI 5771 Steel | 1 |
| 7 | Handle | Aluminum | 1 |
| 8 | O-Ring | NBR 80 | 1 |

**YELLOW BRASS 1/4" MINI MALE X FEMALE VALVE**

- Proprietary seal design extreme for low & high temperature applications
- -76° to +248°F temperature.
- Nominal working pressure 235 psi will handle 300psi@75° F
- One piece drawn sand blasted brass plated body. Solid chrome plate brass ball
- Double seal system allows valve to be operated in both directions making installation easier.
- Blowout-proof brass stem.
- NPT taper ANSI B1.20.1 threads.
- 1/4 TURN BLACK METAL HANDLE WITH MECHANICAL STOP.

**MALE x FEMALE**

MADE IN ITALY



| Part# | Size | | Dimension Inches | | | | | | |
|-----------|------|-------|------------------|------|------|------|------|------|------------|
| | NPT | DN | A | B | C | E | CH | CASE | List Price |
| 46-903ISB | 1/4" | 0.315 | 1.75 | 1.18 | 0.91 | 0.48 | 0.83 | 200 | 5.90 |