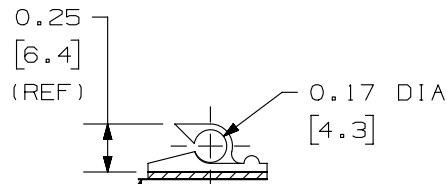
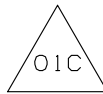
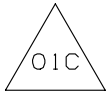
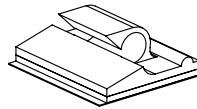
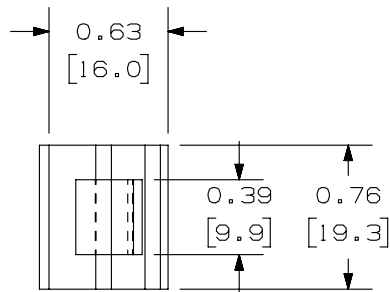


THIS COPY IS PROVIDED ON A RESTRICTED BASIS AND IS NOT TO BE USED IN ANY WAY DETRIMENTAL TO THE INTERESTS OF PANDUIT CORP.

NO WARRANTY, EXPRESSED OR IMPLIED, IS MADE BY PANDUIT WITH RESPECT TO ADHESIVE BOND PERFORMANCE. AMONG OTHER THINGS, THE CONDITIONS UNDER WHICH THESE MOUNTS MAY BE APPLIED, AND/OR THE SURFACE TO WHICH THEY MAY BE APPLIED, ARE BEYOND PANDUIT'S CONTROL.



TEAR-TAB



ADHESIVE BACKING: PRESSURE SENSITIVE FOAM TAPE, .04(1.0) THICK, WITH RUBBER (-A) ACRYLIC (-AT) OR HIGH BOND ACRYLIC (-AV) ADHESIVE AND PROTECTIVE LINER. LINER TO EXTEND BEYOND EDGE TO FORM TEAR-TAB. MOUNT IS DESIGNED TO SUPPORT .20 lbs. (91g) MAX. WEIGHT ON A CLEAN, DRY, SMOOTH SURFACE.

PANDUIT PART NUMBER*	MAXIMUM CABLE DIA. in. (mm)	WEIGHT lbs. (g)/100pcs
ACC19-A	.19 (4.8)	.17 (77)
ACC19-AT	.19 (4.8)	.17 (77)
ACC19-AV	.19 (4.8)	.17 (77)

- TO APPLY ADHESIVE CORD CLIP:
1. REMOVE PROTECTIVE LINER
  2. PLACE IN DESIRED LOCATION
  3. APPLY PRESSURE TO TOP OF CORD CLIP

NOTES:

- \* 1) SEE CURRENT PRICE SHEET FOR PART NUMBER SUFFIX DESIGNATION FOR PACKAGE SIZE AND PART COLOR.

REV	DATE	BY	CHK	APR	DESCRIPTION	ECN
01C	2/26/15	RVU	CLW	JHAC	SHOW THE TEAR TABS IN THE CORRECT LOCATION.	GAECN02632
00B	11/6/09	TMSA			ADDED PART NUMBER ACC19-AV. REVISED TO TEAMCENTER NAMING CONVENTION.	GB0239GG
2	6/5/03	MSAD			MODIFIED BASE LENGTH AND WIDTH DIMENSIONS.	GB0239GG
1	7/15/99	CGSM			REPLACED ISO VIEW	GB0239GG
R	2/23/99	CGSM			RE-DRAWN FROM DWG SS-7173	GB0239GG

TITLE		<b>ADHESIVE CORD CLIP ACC19-A , ACC19-AT , ACC19-AV</b>		
		CUSTOMER DRAWING		
ITEM REVISION NAME		G03597BC/01		
DATASET FILE NAME		G03597BC_DC_GB0239GG/01C		
UNLESS OTHERWISE SPECIFIED, DIMENSIONAL TOLERANCES ARE: IN [ mm ]		<b>PANDUIT</b> MATERIAL: <b>NYLON 6/6</b>		
.x ± N/A .xxx ± N/A .xx ± .02 [ .5 ] ANGLES ± 5 °				
DRAWING NUMBER:		GB0239GG		
DRAWN BY	DATE	CHK	SCALE	SIZE
CGSM	2/23/99	JHAC	FULL	A