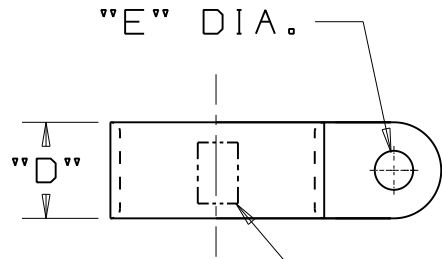
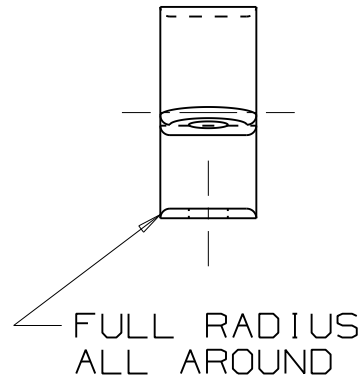
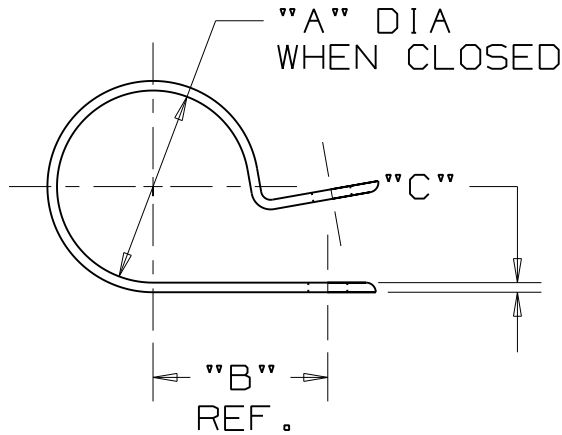


THIS COPY IS PROVIDED ON A RESTRICTED BASIS AND IS NOT TO BE USED IN ANY WAY DETRIMENTAL TO THE INTERESTS OF PANDUIT CORP.



FRACTIONAL PART SIZE NOTED HERE.

| *PANDUIT PART NUMBER | "A" in/(mm) | "B" REF. in/(mm) | "C" in/(mm) | "D" in/(mm) | "E" in/(mm) | WEIGHT lbs (g) / 100 pcs |
|----------------------|-------------|------------------|-------------|-------------|-------------|--------------------------|
| CCS12-S8             | 0.12 (3.1)  | 0.33 (8.4)       | 0.050 (1.3) | 0.37 (9.4)  | 0.167 (4.2) | 0.09 (40.2)              |
| CCS19-S8             | 0.19 (4.8)  | 0.43 (10.9)      | 0.050 (1.3) | 0.37 (9.4)  | 0.167 (4.2) | 0.11 (49.3)              |
| CCS25-S8             | 0.25 (6.3)  | 0.41 (10.4)      | 0.050 (1.3) | 0.37 (9.4)  | 0.167 (4.2) | 0.13 (57.9)              |
| CCS25-S10            | 0.25 (6.3)  | 0.41 (10.4)      | 0.050 (1.3) | 0.37 (9.4)  | 0.203 (5.1) | 0.12 (52.0)              |
| CCS31-S8             | 0.31 (7.9)  | 0.49 (12.4)      | 0.050 (1.3) | 0.37 (9.4)  | 0.167 (4.2) | 0.14 (62.3)              |
| CCS38-S8             | 0.38 (9.5)  | 0.59 (15.0)      | 0.050 (1.3) | 0.37 (9.4)  | 0.167 (4.2) | 0.16 (70.7)              |
| CCS44-S8             | 0.44 (11.1) | 0.57 (14.5)      | 0.050 (1.3) | 0.37 (9.4)  | 0.167 (4.2) | 0.17 (77.0)              |
| CCS50-S8             | 0.50 (12.7) | 0.60 (15.2)      | 0.050 (1.3) | 0.37 (9.4)  | 0.167 (4.2) | 0.18 (80.0)              |



NOTES:

- \*1. SEE CURRENT PRICE SHEET FOR PART NUMBER SUFFIX DESIGNATION FOR PACKAGE SIZE AND PART COLOR.

(DIMENSIONS IN PARENTHESES ARE IN METRIC.)

CAD FILENAME/LAYERS G00239DV\_PB\_CCS\_02

**PANDUIT** CORP. TINLEY PARK, ILLINOIS

CCS - CABLE CLAMP

UNLESS OTHERWISE SPECIFIED, DIMENSIONAL TOLERANCES ARE:  
 (.X) ± 0.1(2.5) (.XXX) ± 0.015(.4)  
 (.XX) ± 0.05(1.3) ANGLES ± 5°

UNLESS OTHERWISE SPECIFIED, ALL DIMENSIONS ARE GIVEN IN INCHES, THIRD ANGLE PROJECTION.

|                 |                     |                         |
|-----------------|---------------------|-------------------------|
| DRAWN BY<br>CJG | MAT'L:<br>NYLON 6/6 | SCALE<br>NONE           |
| DATE<br>6/26/96 |                     | DRAWING NO.<br>G00239DV |
| CHK'D           |                     | DWG SIZE<br>A           |

| REV | DATE   | BY  | CHK | DESCRIPTION  | ECN      | R | CUST | SUP |
|-----|--------|-----|-----|--|----------|---|------|-----|
| 2   | 2/7/06 | Jod |     | UPDATE LOCATION FOR FRACTIONAL PART SIZE INDICATOR | GB0239DV | 2 |      |     |