



# Network Infrastructure for the Enterprise

Preferred Parts – Latin America

**PANDUIT™**



# Network Infrastructure for the Enterprise

Today's enterprise IP networks support ever-expanding converged applications for voice, data, and video, as well as functions such as intelligent lighting, security, safety systems, and more.

Panduit Enterprise Networks provide the industry's most comprehensive and holistic portfolio of products and services that enable sustainable, energy-efficient enterprises. Innovative design features provide easy installation, reduced maintenance costs, and improved network reliability and flexibility.

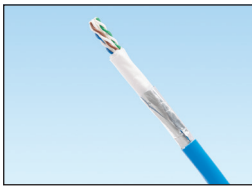
This catalog features the most common offering for an enterprise physical infrastructure deployment. For the complete enterprise offering, please contact your local Panduit representative or visit us at <http://www.panduit.com/en/solutions/enterprise-solutions>.



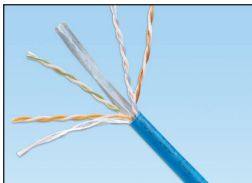
## Table of Contents

Copper Cable.....	3	Fiber Enclosures.....	8
RJ45 Jack Module.....	3	Fiber Adapter Module and Panels.....	8
Patch Panels, Kits and Accessories.....	4	T-70 Surface Raceway.....	9
RJ45 Patch Cords.....	4	T-70 Surface Raceway Fittings.....	9
Faceplates.....	5	Racks, Shelves and Accessories.....	9
Surface Mount Box.....	5	Cable Managers.....	10
Grounding.....	5	Zone Enclosures.....	10
Fiber Optic Cable.....	6	Labeling.....	10
Fiber Build Up Kits.....	6	Security Devices.....	11
Fiber Connectors.....	7	Accessories.....	11
Fiber Patch Cords and Pigtails.....	7	Tools.....	11

## Copper Cable



PUL6AM04WH-CEG



PUL6004BUY

Part Number	Description	UOM	MOQ
<b>Shielded</b>			
PFL6X04WH-CEG	Category 6A cable, 4-pair, 23 AWG, F/UTP, LSZH, White.	Roll	18
PFZ6X04WH-CEG*	Category 6A cable, 4-pair, 23 AWG, F/UTP, LSZH (60332-3), White.	Roll	18
<b>Unshielded</b>			
PUR6AM04BU-CG	Category 6A cable, 4-pair, 23 AWG, UTP, CMR, Blue.	Roll	20
PUL6AM04WH-CEG	Category 6A cable, 4-pair, 23 AWG, U/UTP, LSZH, White.	Roll	18
PUZ6AM04WH-CEG	Category 6A cable, 4-pair, 23 AWG, U/UTP, LSZH (60332-3), White.	Roll	18
PUR6ASD04BU-CG	Category 6A (SD) cable, 4-pair, 26 AWG, UTP, CMR, Blue.	Foot	27,000
PUL6ASD04WH-EG	Category 6A (SD) cable, 4-pair, 26 AWG, UTP, LSZH, White.	Roll	18
PUR6004BUY	Enhanced Category 6 cable, 4-pair, 23 AWG UTP, CMR, Blue.	Roll	27
PUL6004BUY	Enhanced Category 6 cable, 4-pair, 23 AWG UTP, LSZH, Blue.	Roll	27
PUZ6004WH-CEG*	Enhanced Category 6 cable, 4-pair, 23 AWG UTP, LSZH, (60332-3), White.	Roll	24
<b>Outside Plant Cable</b>			
PUO6C04BL-U	Category 6 outside plant cable, 4-pair, 23 AWG, UTP, Black.	Foot	9000

Note: F/UTP means Foil around Unshielded Twisted Pairs = shielded cable.  
LSZH means Low Smoke Zero Halogen.

## RJ45 Jack Module



CJ6X88TGBL



CJRCAPBU



CJS688TGY

Part Number	Description	Std. Pkg. Qty.	Std. Ctn. Qty.
<b>Unshielded</b>			
CJ6X88TGBL	Category 6A RJ45 UTP Mini-Com™ Jack, Black.	1	50
CJ6X88TGBU	Category 6A RJ45 UTP Mini-Com™ Jack, Blue.	1	50
CJ6X88TGIW	Category 6A RJ45 UTP Mini-Com™ Jack, International White.	1	50
CJ6X88TGWH	Category 6A RJ45 UTP Mini-Com™ Jack, White.	1	50
CJ688TGBL	Category 6 RJ45 UTP Mini-Com™ Jack, Black.	1	50
CJ688TGBU	Category 6 RJ45 UTP Mini-Com™ Jack, Blue.	1	50
CJ688TGIW	Category 6 RJ45 UTP Mini-Com™ Jack, International White.	1	50
CJ688TGWH	Category 6 RJ45 UTP Mini-Com™ Jack, White.	1	50
<b>Right Angle Termination Caps</b>			
CJRCAPBU	Right angle termination cap for CJ6X88TG.	10	100
CJRCAPIW	Right angle termination cap for CJ688TG.	10	100
<b>Modular Plugs</b>			
SP688-C	8-position, 8-wire modular plug, for use with 24 AWG, Category 6, UTP copper cable.	100	1000
SP6X88-C	8-position, 8-wire modular plug, for use with TX6A 10 Gbe UTP copper cable.	100	1000
<b>Shielded</b>			
CJS6X88TGY	Category 6A RJ45 shielded Mini-Com™ Jack, Black.	1	50

Contact Panduit Customer Service for other colors and bulk packs.  
Category 6A and Category 6 jack modules are available in Red (RD): CJ6X88TGRD and CJ688TGRD.

Patch Panels, Kits, and Accessories



CPPLA24WBLY



CPP48HDWBLY



CPPA48HDWBLY



DP48688TGY



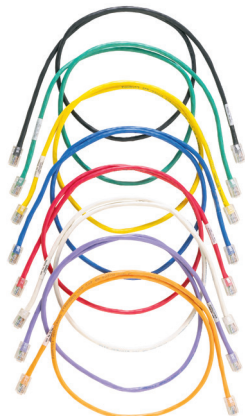
SRB19BLY



SRBBRKT

Part Number	Description	Std. Pkg. Qty.	Std. Ctn. Qty.
<b>Modular</b>			
CPPL24WBLY	24-port patch panel, with labels, with six CFFPL4 faceplates.	1	10
CPPLA24WBLY	24-port angled patch panel with labels, with six CFFPL4 faceplates.	1	10
CP24BLY	24-port all metal modular patch panel, 1 RU.	1	10
CPA24BLY	24-port angled all metal modular patch panel, 1 RU.	1	10
CPP48WBLY	48-port patch panel, with twelve CFFPL4 faceplates.	1	10
CPPL48WBLY	48-port patch panel with labels, with twelve CFFPL4 faceplates.	1	10
CPPLA48WBLY	48-port angled patch panel with labels, with twelve CFFPL4 faceplates.	1	10
CPP48HDWBLY	48-port, 1 RU high density patch panel with rear mounted faceplates.	1	10
CPPA48HDWBLY	48-port, 1 RU angled high density patch panel with rear mounted faceplates.	1	10
<b>Data-Patch™ Patch Panels</b>			
DPA246X88TGY	24-port, angled 1 RU, Category 6A RJ45 UTP Data-Patch™ Patch Panel, Black.	1	1
DP246X88TGY	24-port, flat, 1 RU, Category 6A RJ45 UTP Data-Patch™ Patch Panel, Black.	1	1
DP24688TGY	24-port, flat, 1 RU, Category 6 RJ45 UTP Data-Patch™ Patch Panel, Black.	1	1
DP48688TGY	48-port, flat, 1 RU, Category 6 RJ45 UTP Data-Patch™ Patch Panel, Black.	1	1
<b>Strain Relief</b>			
SRB19BLY	Strain relief bar.	1	10
SRBBRKT	Strain relief bar quick release bracket kit.	1	10

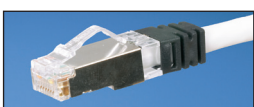
RJ45 Patch Cords



UTP6ASD\*M\*\*



UTP6ASD\*



STP6X\*



UTPSP\*

Part Number	Description	Std. Pkg. Qty.	Std. Ctn. Qty.
<b>Category 6A</b>			
UTP6ASD*	Category 6A 26 AWG UTP patch cord, Off White.	1	10
UTP6ASD*BU	Category 6A 26 AWG UTP patch cord, Blue.	1	10
UTP6ASD*RD	Category 6A 26 AWG UTP patch cord, Red.	1	10
<b>Category 6A Shielded</b>			
STP6X*IG	Category 6A S/FTP patch cord, International Gray.	1	10
STP6X*BU	Category 6A S/FTP patch cord, Blue.	1	10
STP6X*RD	Category 6A S/FTP patch cord, Red.	1	10
<b>Category 6</b>			
UTPSP*Y	Category 6 UTP patch cord, Off White.	1	10
UTPSP*BUY	Category 6 UTP patch cord, Blue.	1	10
UTPSP*RDY	Category 6 UTP patch cord, Red.	1	10
<b>Category 6 28 AWG</b>			
UTP28SP*	Category 6 28 AWG UTP patch cord, Off White.	1	10
UTP28SP*BU	Category 6 28 AWG UTP patch cord, Blue.	1	10
UTP28SP*RD	Category 6 28 AWG UTP patch cord, Red.	1	10

\* Standard lengths include: 3, 5, 7, 10ft.  
Contact Customer Service for additional colors and lengths.

## Faceplates



CFP1



CFPE2

Part Number	Description	Std. Pkg. Qty.	Std. Ctn. Qty.
CFP1IW	1-port classic vertical faceplate, Off White.	1	10
CFP2IW	2-port classic vertical faceplate, Off White.	1	10
CFP4IW	4-port classic vertical faceplate, Off White.	1	10
CFPL2IWY	2-port classic vertical faceplate, with labels, Off White.	1	10
CFPL4IWY	4-port classic vertical faceplate, with labels, Off White.	1	10
CFPE1IWY	1-port executive vertical faceplate with labels, Off White.	1	10
CFPE2IWY	2-port executive vertical faceplate with labels, Off White.	1	10
CFPE4IWY	4-port executive vertical faceplate with labels, Off White.	1	10
CFG2IW	2-port "FGCI" module frame, Off White.	1	10
CF1062IWY	2-port 106 duplex module frame, Off White.	1	10
CFFPA2BL	2-port sloped furniture faceplate, standard opening, Black.	1	10

### Blank Modules

CMBBL-X	Mini-Com® 1-Port Blank Module.	1	10
CMBIW-X	Mini-Com® 1-Port Blank Module.	1	10

## Surface Mount Box



CBX2IW-AY

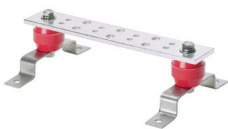
Part Number	Description	Std. Pkg. Qty.	Std. Ctn. Qty.
CBX2IW-AY	2-port surface mount box, Off White.	1	10
CBX4IW-AY	4-port surface mount box, Off White.	1	10
CBXF6IW-AY	6-port multi-media surface mount box with fiber spool, Off White.	1	—

Contact Panduit Customer Service for other colors.

## Grounding



RGS134-1Y



GB4B00612TPI-1



RGESDWS

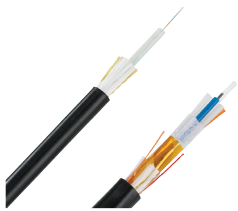


LCC6-14AW-L

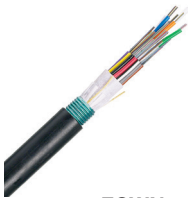
Part Number	Description	Std. Pkg. Qty.	Std. Ctn. Qty.
RGS134-1Y	Grounding strip; 78.65" (2m) length; 0.67" (17mm) width; 0.05" (1.27mm) thickness; provided with 0.16 oz. (5cc) of antioxidant, one grounding sticker and three each #12-24 x 1/2" and M6 x 12mm thread-forming screws.	1	1
LTYK	Label kit includes ten printed tags (2.75" x 1.38" and ten flame retardant cable ties.	1	1
GB4B00612TPI-1	Grounding busbar 1/4" x 4" x 12".	1	1
RGESD2-1	Two-hole ESD port with 5/8" hole spacing; ESD protection sticker included, 0.16oz (5cc) of antioxidant and two each #12-24 x 1/2" and M6 x 12mm thread forming screws.	1	1
RGESDWS	Adjustable fabric ESD wrist strap with 6" coil cord, banana plug, 1 megohm resistor and 4mm snap.	1	1
RGEJ1024PHY	#10 AWG (6mm <sup>2</sup> ) jumper; bent lug on grounding strip side to straight lug on equipment; provided with 0.16oz (5cc) of antioxidant and two each #12-24 x 1/2", M6 x 12mm, #10-32 x 1/2" and M5 x 12mm thread-forming screws.	1	1
LCC6-14AW-L	Two-hole, long barrel lug with window, #6 AWG wire, 1/4" stud hole, 0.63" hole spacing.	1	1



Fiber Optic Cable



FSCR



FOWN

Part Number	Description	UOM	MOQ
-------------	-------------	-----	-----

**Indoor/Outdoor Cable**

FOCRZ12Y	12-fiber OM4 multimode riser rated indoor/outdoor central cable.	Feet	1640
FQCLZ12	12-fiber OM4 multimode riser LSZH indoor/outdoor central cable.	Feet	1640
FOCRX06Y	6-fiber OM3 multimode riser rated indoor/outdoor central cable.	Feet	1640
FOCRX12Y	12-fiber OM3 multimode riser rated indoor/outdoor central cable.	Feet	1640
FSCR912Y	12-fiber OS2 singlemode riser rated indoor/outdoor central cable.	Feet	1640
FSNR924Y	24-fiber OS2 singlemode riser rated indoor/outdoor central cable.	Feet	1640

**Distribution Cable**

FODRZ12Y	12-fiber OM4 multimode riser distribution cable.	Feet	1640
FQDLZ12	12-fiber OM4 multimode riser LSZH distribution cable.	Feet	1640
FODRX06Y	6-fiber OM3 multimode riser rated distribution cable.	Feet	1640
FODRX12Y	12-fiber OM3 multimode riser rated distribution cable.	Feet	1640
FSDR912Y	12-fiber OS2 singlemode riser rated distribution cable.	Feet	1640
FSDR924Y	24-fiber OS2 singlemode riser rated distribution cable.	Feet	1640

**Outside Plant Stranded Cable**

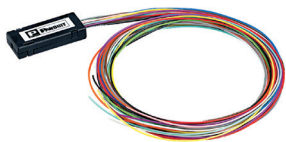
FSTN912	12-fiber OS2 singlemode non-rated outside plant stranded cable.	Feet	1640
FSTN924	24-fiber OS2 singlemode non-rated outside plant stranded cable.	Feet	1640

**Outside Plant Armored Cable**

FOWNZ06	6-fiber OM4 multimode non-rated outside plant armored cable.	Feet	3281
FOWNZ12	12-fiber OM4 multimode non-rated outside plant armored cable.	Feet	3281
FOWNX06	6-fiber OM3 multimode non-rated outside plant armored stranded cable.	Feet	3281
FSWN912	12-fiber OS2 singlemode non-rated outside plant armored stranded cable.	Feet	3281
FSWN924	24-fiber OS2 singlemode non-rated outside plant armored stranded cable.	Feet	3281

Additional flame ratings available upon request.

Fiber Build Up Kits



FO12CB

Part Number	Description	Std. Pkg. Qty.	Std. Ctn. Qty.
-------------	-------------	----------------	----------------

**Fiber Build Up Kits**

FO12CB	Build up 250µm fiber to 900µm loose buffered coating size; for twelve fibers.	1	1
FO6CB	Build up 250µm fiber to 900µm loose buffered coating size; for six fibers.	1	1

## Fiber Connectors



**FLCSMCXAQY**



**FSCSCBU**

Part Number	Description	Std. Pkg. Qty.	Std. Ctn. Qty.
<b>OptiCam™ Pre-Polished Connectors*</b>			
<b>FLCDMCXAQY</b>	LC 50/125µm OM3/OM4 multimode duplex connector, Aqua boot.	1	10
<b>FLCSMCXAQY</b>	LC 50/125µm OM3/OM4 multimode simplex connector, Aqua boot.	1	10
<b>FLCSCBUY</b>	LC 9/125µm singlemode simplex fiber optic connector for 900µm.	1	10
<b>FLCDSCBUY</b>	LC 9/125µm singlemode duplex fiber optic connector for 900µm.	1	10
<b>FSCMCXAQ</b>	SC 50/125µm OM3/OM4 multimode simplex connector, Aqua boot.	1	10
<b>FSCDMXAQ</b>	SC 50/125µm OM3/OM4 multimode duplex connector, Aqua boot.	1	10
<b>FSCSCBU</b>	SC 9/125µm singlemode simplex connector, Blue boot.	1	10

## Fiber Patch Cords and Pigtails



**FX23RSNSNSNM\*\*\***



**FX23RSNSNSNM\*\*\***



**FX1BN3NNNSNM001**



**FX1BN1NNNSNM001**

Part Number	Description	Std. Pkg. Qty.	Std. Ctn. Qty.
<b>FX23RSNSNSNM***</b>	2-fiber OM3 SC duplex to SC duplex patch cord, OFNR (riser) rated, 3mm jacketed cable, Std. IL.	1	10
<b>F923RSNSNSNM***</b>	2-fiber OS2 SC duplex to SC duplex patch cord, OFNR (riser) rated, 3mm jacketed cable, Std. IL.	1	10
<b>FZ2ERLNLNSNM***</b>	2-fiber OM4 LC duplex to LC duplex patch cord, OFNR (riser) rated, 1.6mm jacketed cable, Std. IL.	1	10
<b>FX2ERLNLNSNM***</b>	2-fiber OM3 LC duplex to LC duplex patch cord, OFNR (riser) rated, 1.6mm jacketed cable, Std. IL.	1	10
<b>F92ERLNLNSNM***</b>	2-fiber OS2 LC duplex to LC duplex patch cord, OFNR (riser) rated, 1.6mm jacketed cable, Std. IL.	1	10
<b>FX1BN3NNNSNM***</b>	1-fiber OM3 SC to pigtail patch cord, 900µm buffered fiber, no jacket.	1	10
<b>F91BN3NNNSNM***</b>	1-fiber OS2 SC to pigtail patch cord, 900µm buffered fiber, no jacket.	1	10
<b>FX1BN1NNNSNM***</b>	1-fiber OM3 LC to pigtail patch cord, 900µm buffered fiber, no jacket.	1	10
<b>F91BN1NNNSNM***</b>	1-fiber OS2 LC to pigtail patch cord, 900µm buffered fiber, no jacket.	1	10

\*\*\* = length in meters. 001 = 1 meter, 002 = 2 meters, 003 = 3 meters etc.  
 Contact Panduit Customer Service for other lengths.  
 Low Smoke Zero Halogen flame rating available upon request.

Fiber Enclosures



FMT1



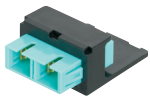
FCE1U



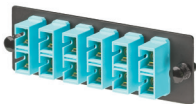
FOSMF

Part Number	Description	Std. Pkg. Qty.	Std. Ctn. Qty.
FMT1	Rack-mount fiber tray, 1 RU. Requires 24-port modular patch panel and Mini-Com™ Adapter Modules.	1	1
FMT1A	Rack-mount fiber tray, angled, 1 RU. Requires 24-port modular patch panel and Mini-Com™ Adapter Modules.	1	1
FCE1U	Rack-mount fiber enclosure, 1 RU. Accepts four fiber adapter panels or QuickNet™ Cassettes.	1	1
FOSMF	Fiber optic splice module, 24 fusion, for rack-mount enclosure.	1	1

Fiber Adapter Module and Panels



CMDAQSCZBL



FAP6WAQDSCZ

Part Number	Description	Std. Pkg. Qty.	Std. Ctn. Qty.
<b>Fiber Adapter Modules</b>			
CMDAQSCZBL	SC duplex (Aqua) adapter (Black) Mini-Com™ Module Assembly, zirconia.	1	10
CMDBUSCZBU	SC duplex (Blue) adapter (Blue) Mini-Com™ Module Assembly, zirconia.	1	10
CMDSAQLCZBL	Duplex LC Sr./Sr. (Aqua) adapter (Black) Mini-Com™ Module Assembly, zirconia.	1	10
CMDSLCZBU	Duplex LC Sr./Sr. (Blue) adapter (Blue) Mini-Com™ Module Assembly, zirconia.	1	10
<b>Fiber Adapter Panels</b>			
FAP3WAQDSCZ	Fiber adapter panel with three SC duplex (Aqua) adapters, zirconia.	1	10
FAP3WBUDSCZ	Fiber adapter panel with three SC duplex adapters (Blue), zirconia.	1	10
FAP6WAQDLCZ	Fiber adapter panel with six LC duplex (Aqua) adapters, zirconia.	1	10
FAP6WBUDLCZ	Fiber adapter panel with six LC duplex (Blue) adapters, zirconia.	1	10
FABP	Blank fiber adapter reserves space for future use.	1	—



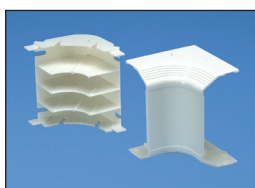
## T-70 Surface Raceway



T70BIW2  
T70BCIW2

Part Number	Description	Std. Pkg. Qty.	Std. Ctn. Qty.
T70BIW2	T-70 raceway base in 2 meter lengths, Off White.	2m	—
T70BCIW2	T-70 raceway cover in 2 meter lengths, Off White.	2m	—

## T-70 Surface Raceway Fittings



T70CIW



T70TIW

Part Number	Description	Std. Pkg. Qty.	Std. Ctn. Qty.
T70BCIW-X	Base coupler fitting, Off White.	10	—
T70CCIW-X	Cover coupler fitting, Off White.	10	—
T70RAIW	Right angle fitting, Off White.	1	—
T70ICIW	Inside corner fitting, Off White.	1	—
T70OCIW	Outside corner fitting, Off White.	1	—
T70TIW	Tee fitting, Off White.	1	—
T70ECIW	End cap fitting, Off White.	1	—

## Racks, Shelves and Accessories



R4PCN



E6412B23

Part Number	Description	Std. Pkg. Qty.	Std. Ctn. Qty.
<b>Racks</b>			
R2P	2 post rack, 45 RU, with threaded rails.	1	1
R4P	4 post rack, 45 RU, with threaded rails.	1	1
R4PCN	4 post rack, 45 RU with cage nut rails, 760mm deep.	1	1
<b>Shelves</b>			
SRM19FM1	Front mount shelf, 1 RU, 480mm deep.	1	1
RSHLF	Front and rear mount shelf, 1 RU, 760mm deep.	1	1
<b>Rack Accessories</b>			
S1224-C	#12-24 screws.	100	1000
CNWS1224-C	#12-24 cage nut with screws.	100	1000
CNWSM6-C	M6 cage nut with screws.	100	1000
R2PPDUB	PDU mounting kit, suits 2 post rack and 4 post rack.	1	1
CPAF1BLY	Angled filler panel, 1 RU.	1	1
<b>Cabinets</b>			
E6412B2	24 RU enterprise cabinet with single hinge perforated doors with key swing handles.	1	1

Cable Managers



WMPSE



NMF2



PRV8 WMPVHC45E

Part Number	Description	Std. Pkg. Qty.	Std. Ctn. Qty.
WMPSE	PatchLink™ Horizontal Cable Manager, front and rear, 1 RU.	1	1
WMPHF2E	Horizontal cable manager front only, 2 RU	1	1
WMPFSE	PatchLink™ Horizontal Cable Manager, front only, 1 RU.	1	1
WMPH2E	Horizontal cable manager front and rear, 2 RU.	1	1
NM2	Horizontal cable manager, high capacity front and rear, 2 RU.	1	1
NMF2	Horizontal cable manager, high capacity front only, 2 RU.	1	1
PREPB1	End Panel.	1	1
NCMH2	Horizontal cable manager front and rear, 2 RU..	1	1
WMPV22E	NetRunner™ Vertical Cable Manager, front and rear 22.	1	10
WMPV45E	NetRunner™ Vertical Cable Manager, front and rear 45.	1	10
PRV6	PatchRunner™ Vertical Cable Manager, front and rear 6 inch.	1	—
PRD6	PatchRunner™ 6 inch (152mm) Dual Hinge Door for 84 inches high.	1	—
PRV8	PatchRunner™ Vertical Cable Manager, front and rear 8 inch.	1	—
PRD8	PatchRunner™ 8 inch (203mm) Dual Hinge Door for 84 inches high.	1	—

Zone Enclosures



PZC12W



PZICEE



CUFMB24BL

Part Number	Description	Std. Pkg. Qty.	Std. Ctn. Qty.
PZC12W	12 RU wall mount cabinet with thermal design, load rating of 250 lbs., windowed front door, Black. 25.81"H x 25.00"W x 22.85"D (655.6mm x 635.0mm x 580.4mm).	1	—
PZAEWM3	Active wall mount enclosure holds up to 3 RU of passive equipment and provides optimal cable management and optional thermal management. Steel. 25.81"H x 25.00"W x 22.85"D (977.9mm x 709.2mm x 218.7mm).	1	—
PZICEE	Fully assembled economical in-ceiling enclosure. Accepts to 8 RU of standard 19" patch panels. Includes mounting brackets and integrated horizontal slack manager. White. 23.50"H x 23.50"W x 13.43"D (596.9mm x 596.9mm x 341.1mm).	1	—
CUFMB24BL	24-port aluminum underfloor consolidation point box includes pre-printed numbered labels with writable surface on back when pre-numbered labels are not applicable. Black. 1.69"H x 10.85"W x 10.67"L (42.9mm x 275.6mm x 271.0mm).	1	—

Labeling



LS8EQ-KIT

Part Number	Description	Std. Pkg. Qty.	Std. Ctn. Qty.
LS8EQ-KIT	LS8EQ hand-held printer with QWERTY keypad.	1	1
UILS8BW	Ultimate ID™ Label Cassette.	1	10
C252X030FJC	Modular patch panel (CP) adhesive label cassette.	1	10
C261X035Y1C	Modular patch panel (CPPL) label cassette.	1	10
S100X150VAC	Cable self-laminating label cassette.	1	10
R100X150V1C	Turn-Tell™ Patch Cord Label Cassette.	1	10

## Security Devices



PSL-LCAB-BU



FLCCLIW-X



PSL-DCJB



PSL-DCPLRX

Part Number	Description	Std. Pkg. Qty.	Std. Ctn. Qty.
PSL-LCAB-BU	LC duplex adapter blockout device, ten devices (Blue) and one removal tool (Black).	1	20
FLCCLIW-X	LC patch plug lock-in device, ten devices and one removal tool.	10	100
PSL-DCJB-BL	Jack module blockout device, ten block-outs (Black) and one removal tool (Black).	1	20
PSL-DCJB-BU	Jack module blockout device, ten block-outs (Blue) and one removal tool (Black).	1	20
PSL-DCJB	Jack module blockout device, ten block-outs (Red) and one removal tool (Black).	1	20
PSL-DCPLRX-BL	Recessed RJ45 plug lock-in device, ten devices (Black) and one installation/removal tool (Black).	1	20
PSL-DCPLRX-BU	Recessed RJ45 plug lock-in device, ten devices (Blue) and one installation/removal tool (Black).	1	20
PSL-DCPLRX	Recessed RJ45 plug lock-in device, ten devices (Red) and one installation/removal tool (Black).	1	20

## Accessories



MDC



HLS

Part Number	Description	Std. Pkg. Qty.	Std. Ctn. Qty.
<b>Dust Caps</b>			
MDC-C	Jack module dust cap. Compatible with all RJ45 Mini-Com™ Jack Modules.	100	100
<b>Tak-Ty™ Cable Ties</b>			
HLS-15R0	Tak-Ty® Hook and Loop Strip Roll Cable Tie. 15' L (4.6m); 0.75" W (19.1mm); Black.	1	1
HLS-75R0	Tak-Ty® Hook and Loop Strip Roll Cable Tie. 75' L (22.9m); 0.75" W (19.1mm); Black.	1	1

## Tools



EGJT



TGJT



FCAMKIT

Part Number	Description	Std. Pkg. Qty.	Std. Ctn. Qty.
EGJT	TG jack termination tool.	1	—
TGJT	TG jack termination tool, for high-volume installations.	1	—
CJAST	Copper cable jacket stripper.	1	1
CWST	Copper wire snips.	1	1
PDT110	110 punchdown tool.	1	1
CBOT24K	Cable bundle organizing tool.	1	10
FIELDKIT	Field polish fiber optic termination kit for all field polish connectors.	1	—
FCAMKIT	OptiCam™ Termination Kit for pre-polished connectors.	1	1
MPT5-8AS	Crimp tool for TX6™ PLUS and Pan-Plug™ Modular Plugs.	1	1





**PANDUIT™**

**Panduit Chile**

**Phone: +56 (2) 2442 7000**

**Fax: +56 (2) 2447 2028**

**Address: Rosas 1758 – Santiago**

**Panduit Colombia**

**Phone: +57 (1) 4276238**

**Fax: +57 (1) 4276188**

**Address: Carrera 68 D No 25 B - 86**

**Edificio Torre Central Oficina 601**

**Bogotá – Colombia**

**Panduit Peru**

**Phone: +51 421 4358/+51 421 3941**

**Address: Av. Javier Prado Oeste 1520**

**San Isidro – Lima**

**[www.panduit.com](http://www.panduit.com)**