

### 12 T568B Wiring

Color Key: R (Blue), B (Orange), F (Brown), A (Green)

Method 1: Punch-down tool

Method 2: Screwdriver

Incorrect wiring diagrams (marked with red X and green checkmarks):

- Top-left: Blue and Orange crossed, Brown and Green crossed.
- Top-right: Blue and Orange crossed, Brown and Green crossed (different orientation).
- Bottom-left: Blue and Green crossed, Orange and Brown crossed.
- Bottom-right: Blue and Green crossed, Orange and Brown crossed (different orientation).

### 12 T568A Wiring

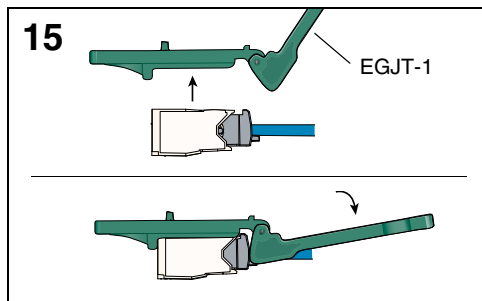
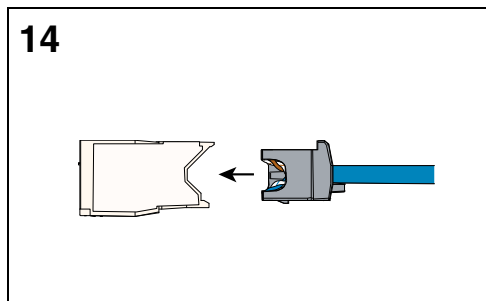
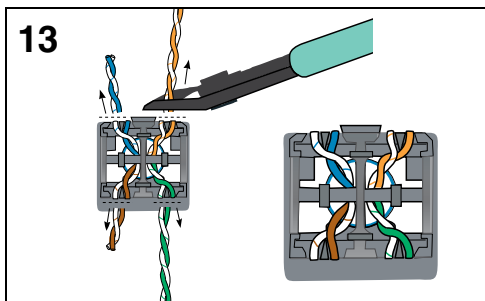
Color Key: R (Blue), B (Orange), F (Brown), A (Green)

Method 1: Punch-down tool

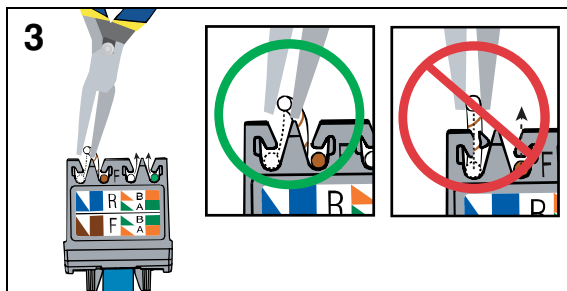
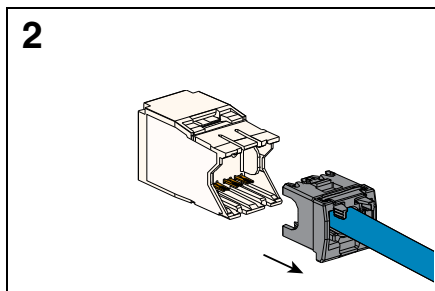
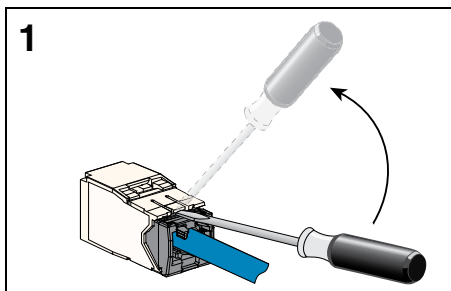
Method 2: Screwdriver

Incorrect wiring diagrams (marked with red X and green checkmarks):

- Top-left: Blue and Orange crossed, Brown and Green crossed.
- Top-right: Blue and Orange crossed, Brown and Green crossed (different orientation).
- Bottom-left: Blue and Green crossed, Orange and Brown crossed.
- Bottom-right: Blue and Green crossed, Orange and Brown crossed (different orientation).



## REMOVAL STEPS



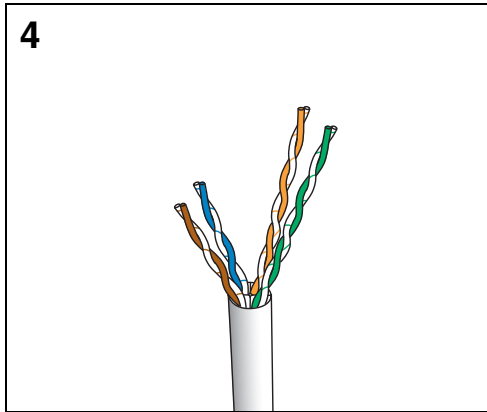
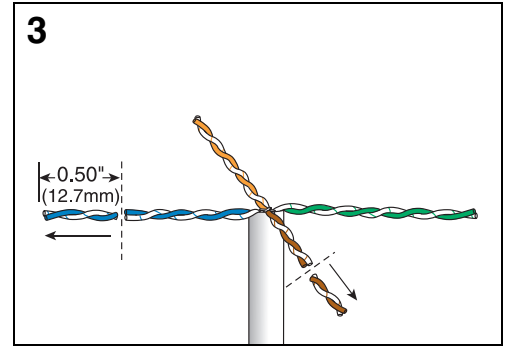
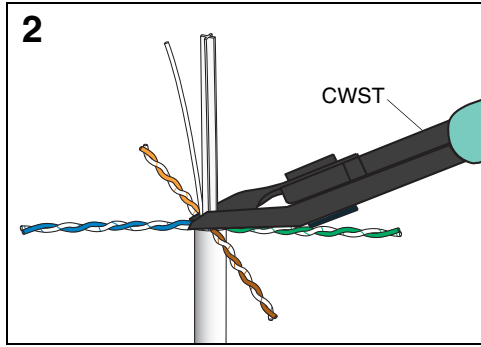
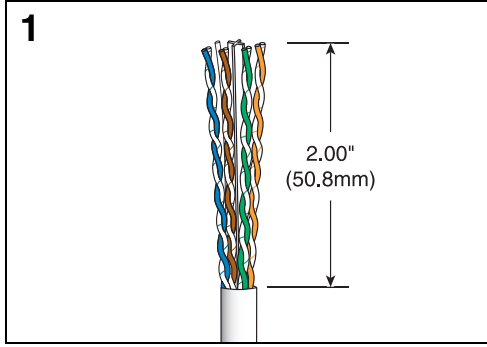
**Notes:**

1. For specified performance, follow TIA/EIA 568-C installation guidelines.
2. Jack modules can terminate 22-26 AWG solid or stranded IWC data cable with 0.062" (1.57mm) maximum insulated conductor outside diameter.
3. Jack modules may be re-terminated a minimum of 20 times.
4. For technical and performance information, consult Panduit technical support.

**As with all Wiring Accessories, the following statements apply:**

1. Never install communications wiring during a lightning storm.
2. Never install communications wiring in wet locations unless the jack is specifically designed for use in wet locations.
3. Never touch uninsulated communications wiring or terminals unless the communication line has been disconnected at the network interface.
4. Use caution when installing or modifying communication wiring.

### Cable Prep for non-MaTriX Category 6A Cable



Continue with steps 8-15 on pages 1 and 2 to complete termination.