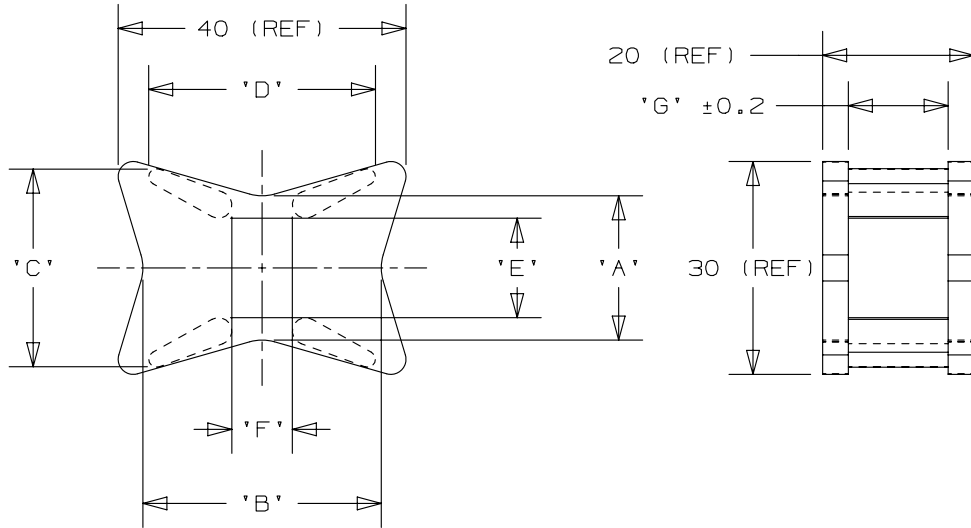


2

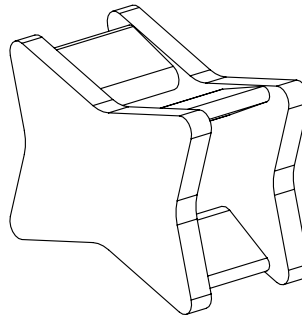
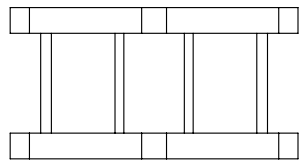
1

THIS COPY IS PROVIDED ON A RESTRICTED BASIS AND IS NOT TO BE USED IN ANY WAY DETRIMENTAL TO THE INTERESTS OF PANDUIT CORP.

PANDUIT PART NO.	DIMENSIONS							WEIGHT grams / 100 pcs
	'A'	'B'	'C'	'D'	'E'	'F'	'G'	
CSEH15A30	18.6	31	26.3	29.7	11.2	8	13.1	833



- NOTES:
- FOR USE WITH PANDUIT CABLE TIE TYPE:
 M- MINATURE I- INTERMEDIATE
 S- STANDARD H- HEAVY
 EH- EXTRA HEAVY
 - SEE www.panduit.com FOR CURRENT PART NUMBER SUFFIX DESIGNATION, PACKAGE SIZE AND PART COLOR.



TITLE		CABLE SPACER		
ITEM REVISION NAME		10B015IV/00		
DATASET FILE NAME		10B015IV_DC/00 - GB1932BV_REV01		
UNLESS OTHERWISE SPECIFIED, DIMENSIONAL TOLERANCES ARE: IN [mm]		MATERIAL:		
± 0.5 mm		SEE NOTE 1		
DRAWN BY		DATE		DRAWING NUMBER:
JAD		4/28/03		GB1932BV
THIRD ANGLE PROJECTION		SCALE		SIZE
NONE		SHT 1 OF 1		A4

REV	DATE	BY	CHK	APR	DESCRIPTION	ECN
1	3/19/13	BWG	JADE	PBC	DIMENSIONS C, D, E AND G REVISED. REVISED NOTES.	GB1932BV

2

1