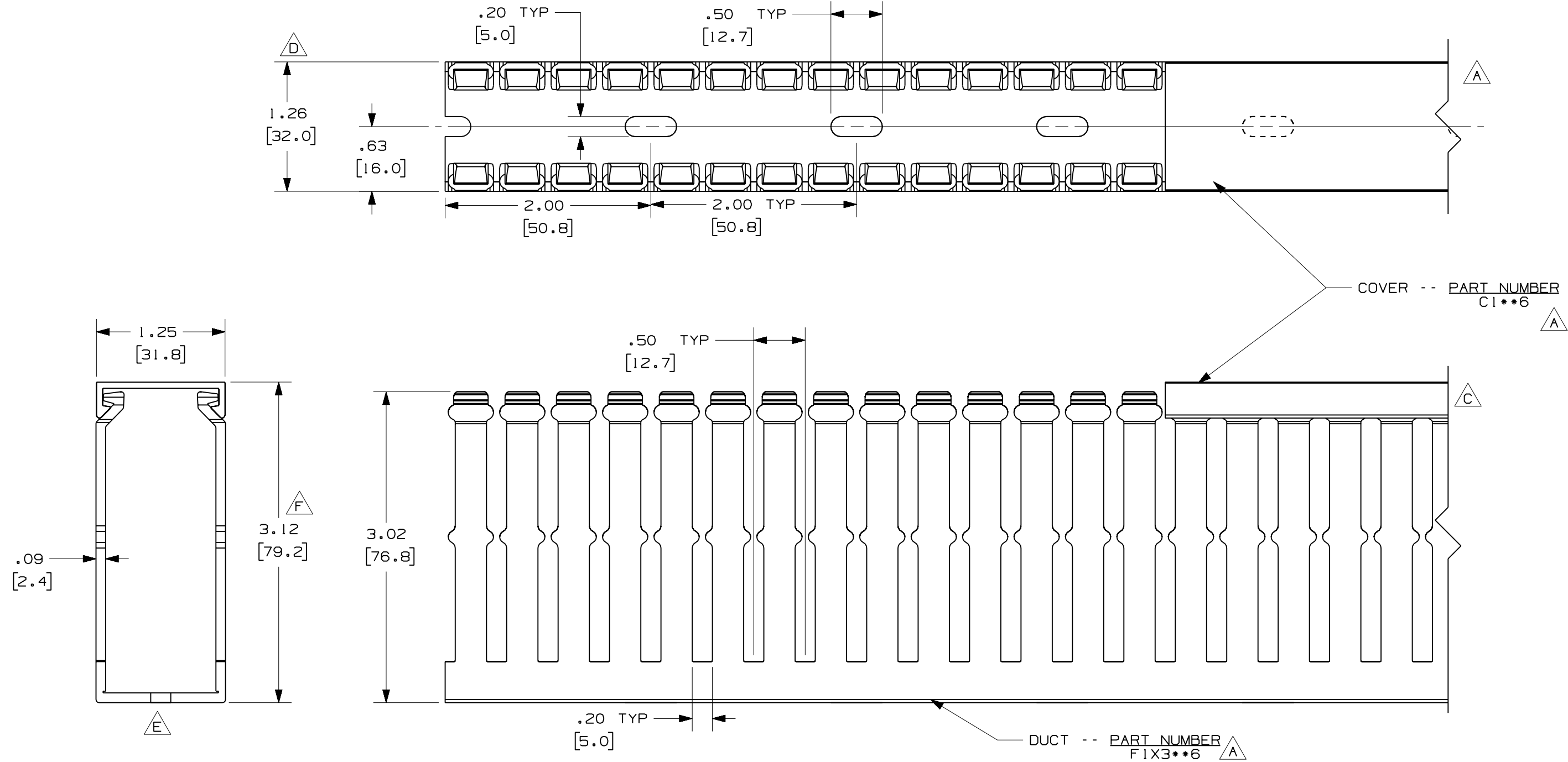


THIS COPY IS PROVIDED ON A RESTRICTED BASIS AND IS NOT TO BE USED IN ANY WAY DETRIMENTAL TO THE INTERESTS OF PANDUIT CORP.



A **G**

NOTE.

1. ALL DIMENSIONS ARE REFERENCE ONLY.
2. DIMENSIONS IN PARENTHESES ARE METRIC.
3. THE ** DENOTE COLOR.
4. DUCT AND COVER ARE AVAILABLE IN 6 FT [1828.8] LENGTH

| REV | DATE | BY | CHK | DESCRIPTION |
|-----|---------|------|------|---|
| 2 | 7/23/07 | JCST | MKBE | G. ADDED LENGTH NOTE F. CORRECTED DIMENSION |
| 1 | 6/18/04 | JCST | MKBE | E. REMOVED DIMENSION D. ADDED DIMENSION |
| R | 6/18/03 | JCST | JGG | B. CHANGED DRAWING SIZE A. ADDED TOP VIEW, LABELS, AND NOTE C. CHANGED VIEW |
| | | | | DRAWING RELEASED |

| | | | |
|---|---------|-----------------|-----------|
| CAD FILENAME/LAYERS | | DI1000CA_DC/03C | |
| PANDUIT CORP. TINLEY PARK, ILLINOIS | | | |
| WIRING DUCT - TYPE F WITH COVER 1 X 3 MARKETING DRAWING | | | |
| DRAWN BY | JCST | MAT'L: | PVC |
| DATE | 6/18/03 | SCALE | FULL |
| CHECKED BY | JGG | DRAWING NO. | 36897-763 |
| | | DWG SIZE | B |