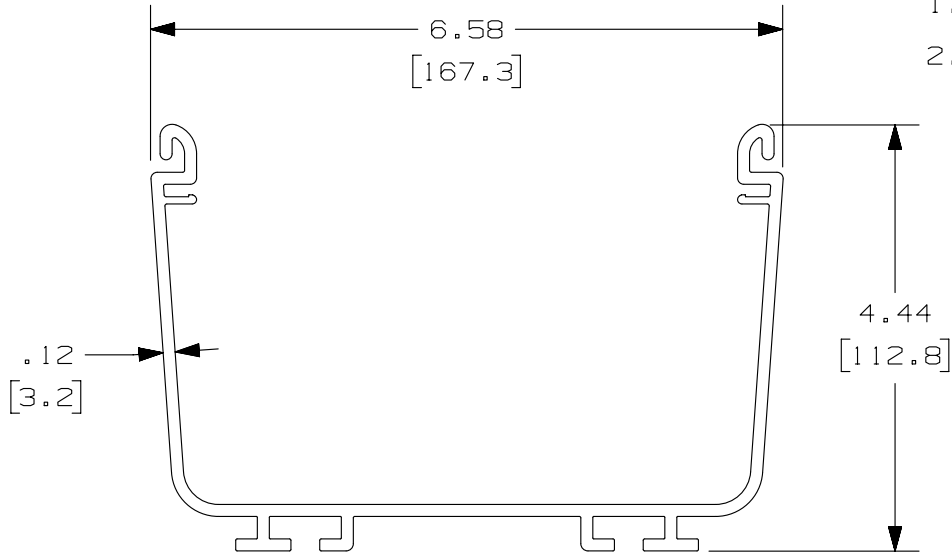


THIS COPY IS PROVIDED ON A RESTRICTED BASIS AND IS NOT TO BE USED IN ANY WAY DETRIMENTAL TO THE INTERESTS OF PANDUIT CORP.

PANDUIT PART NUMBER	LENGTH	WEIGHT	WEIGHT/LENGTH
FR6X4**2 (SEE NOTE 1)	78.74 IN ±.18 IN (2000.0mm ±4.6mm)	9.71 LB (4404g)	1.48 LB/FT (22.0g/cm)
FR6X4**6 (SEE NOTE 1)	72.00 IN ±.18 IN (1828.8mm ±4.6mm)	8.88 LB (4028g)	1.48 LB/FT (22.0g/cm)

NOTES:

- SEE CURRENT CATALOG FOR ADDITIONAL PART SUFFIXES TO INDICATE COLOR AND/OR PACKAGE QUANTITY.
- DIMENSIONS IN PARENTHESES ARE IN METRIC.



TITLE FIBERRUNNER 6X4 CHANNEL FR6X4**2, FR6X4**6 CUSTOMER DRAWING		PANDUIT
ITEM REVISION NAME D37185CC/01		
DATASET FILE NAME D37185CC_DC/01B-FR6X4		MATERIAL: PVC
UNLESS OTHERWISE SPECIFIED, DIMENSIONAL TOLERANCES ARE: IN [mm] .X ± .XXX ± .XX ± .03 [.8] ANGLES ±		DRAWING NUMBER: 37185-82
THIRD ANGLE PROJECTION		
DRAWN BY JHNU	DATE 05-11-00	CHK NEY
SCALE NONE		SIZE A

REV	DATE	BY	CHK	APR	DESCRIPTION	ECN
6	02-25-13	JBN	RTFI	RN	L. REVISED DRAWING BORDER & TITLE BLOCK	37185-82

D10100DA/14