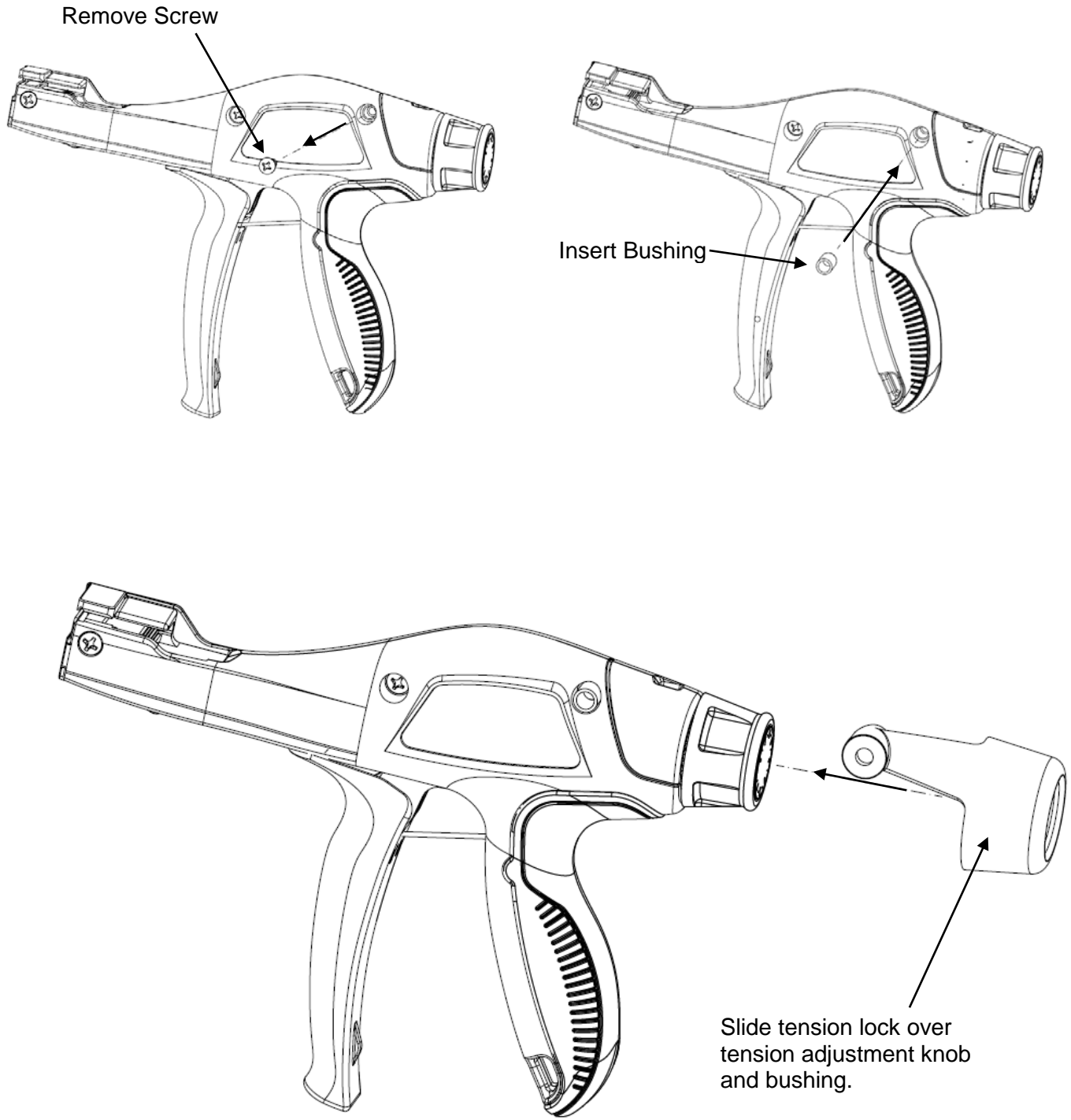
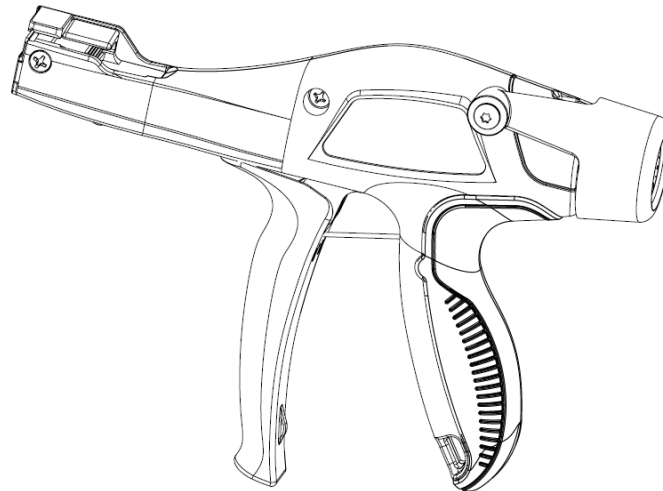
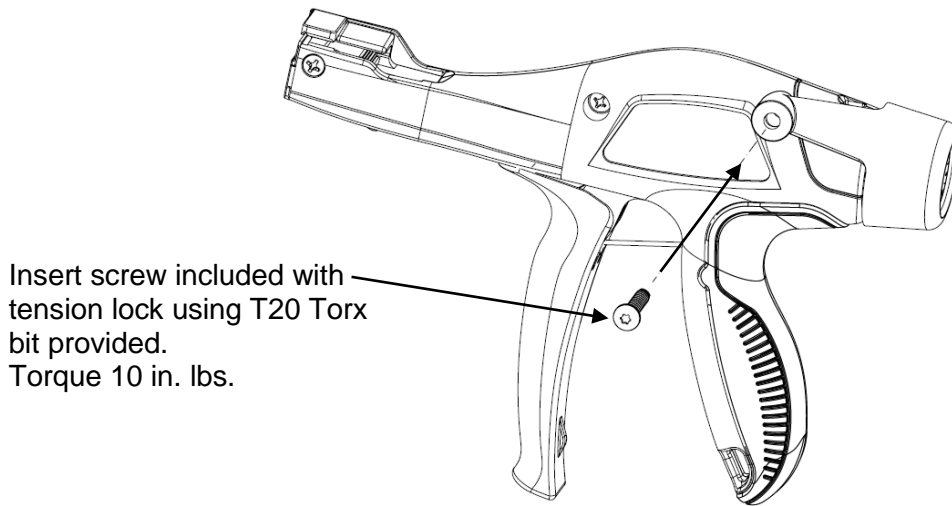


SCREW-TYPE TENSION LOCKOUT KIT INSTALLATION INSTRUCTIONS FOR: GTS-E and GTH-E TOOLS

© Panduit Corp. 2018





PARTS LIST	
DESCRIPTION	QTY.
Tension Lockout	1
Bushing	1
Screw	1
T20 Torx Bit	1

Email:
techsupport@panduit.com

EU Website:
www.panduit.com/emea

EU Email:
emeatoolservicecenter@panduit.com

PANDUIT

www.panduit.com

Panduit Corp.
USA Technical Support
Tel: 800-777-3300

Panduit Europe • EMEA Service Center
Tel: +31 546 580 452 • Fax: +31 546 580 441