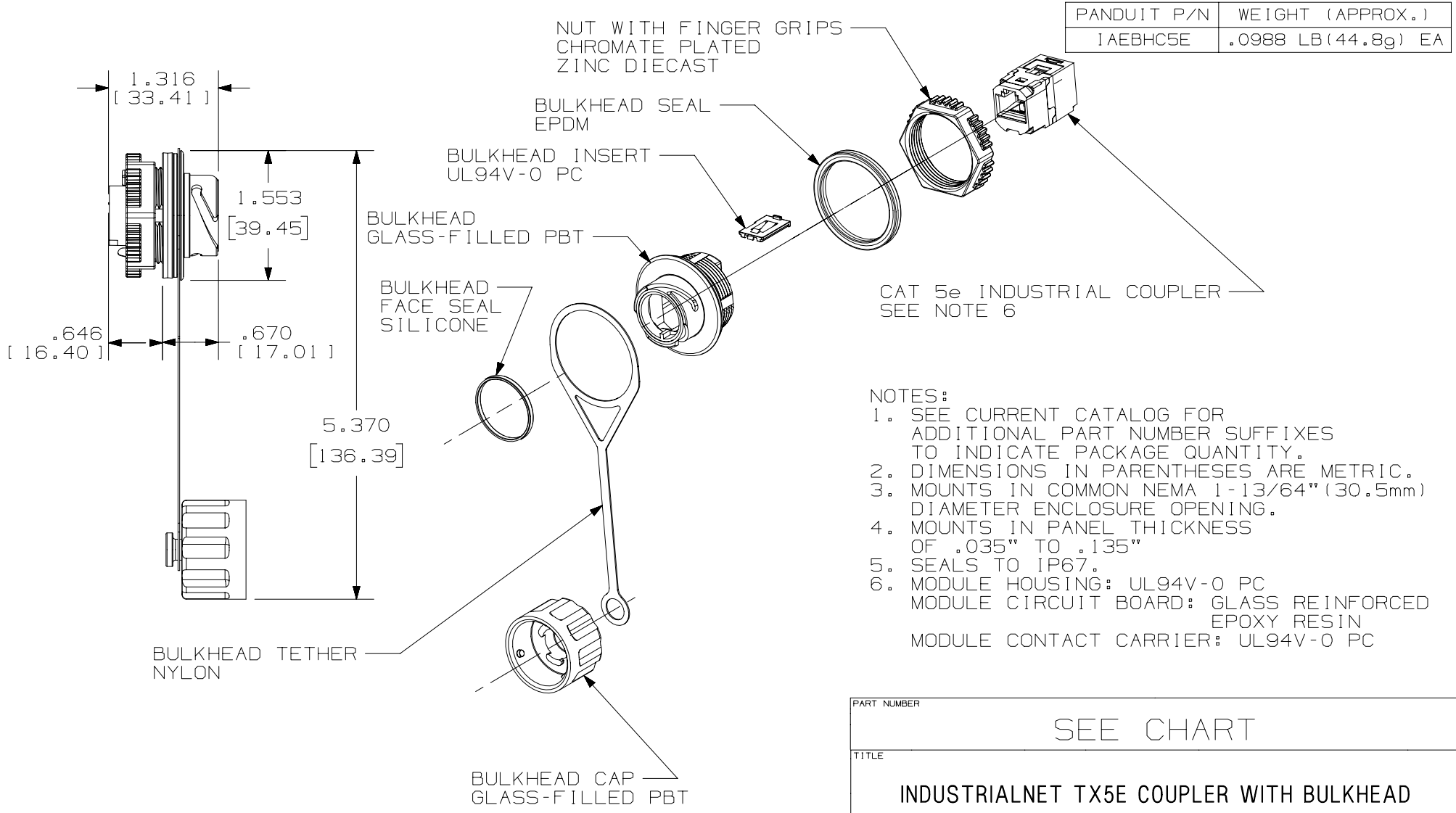


THIS COPY IS PROVIDED ON A RESTRICTED BASIS AND IS NOT TO BE USED IN ANY WAY DETRIMENTAL TO THE INTERESTS OF PANDUIT CORP.



- NOTES:
1. SEE CURRENT CATALOG FOR ADDITIONAL PART NUMBER SUFFIXES TO INDICATE PACKAGE QUANTITY.
  2. DIMENSIONS IN PARENTHESES ARE METRIC.
  3. MOUNTS IN COMMON NEMA 1-13/64" (30.5mm) DIAMETER ENCLOSURE OPENING.
  4. MOUNTS IN PANEL THICKNESS OF .035" TO .135"
  5. SEALS TO IP67.
  6. MODULE HOUSING: UL94V-0 PC  
 MODULE CIRCUIT BOARD: GLASS REINFORCED EPOXY RESIN  
 MODULE CONTACT CARRIER: UL94V-0 PC

PART NUMBER		SEE CHART	
TITLE			
INDUSTRIALNET TX5E COUPLER WITH BULKHEAD			
CUSTOMER DRAWING			
ITEM REVISION NAME		M02037CB/05	
DATASET FILE NAME		M02037CB_DC17/05A	
UNLESS OTHERWISE SPECIFIED, DIMENSIONAL TOLERANCES ARE: IN [mm]		MATERIAL:	
.x ± .xxx ± .010 [.3]		DRAWING NUMBER:	
.xx ± .03 [.8] ANGLES ± 1		02037-17	
THIRD ANGLE PROJECTION		SHT 1 OF 1	
DRAWN BY	DATE	CHK	SCALE
BJN	10-27-06	CEF	NONE
REV	DATE	BY	CHK
6	6-20-16	BJN	JAV
5	5-17-14	TA	REFR

REV	DATE	BY	CHK	APR	DESCRIPTION	ECN
6	6-20-16	BJN	JAV	RDE	UPDATED	02037-17
5	5-17-14	TA	REFR	REFR	REVISED TITLE BLOCK REVISED AND REDRAWN WITH THE LATEST REV. INFORMATION	02037-17

D10100DA/14