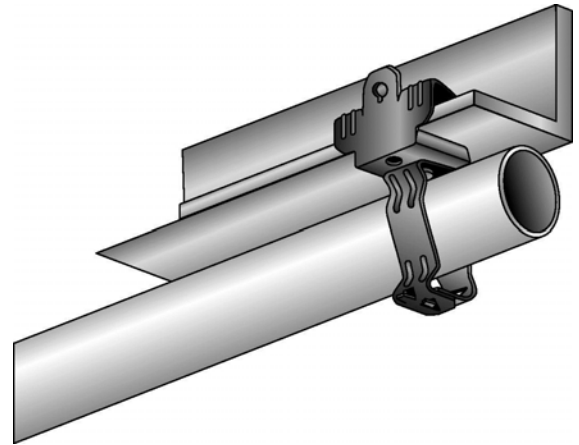
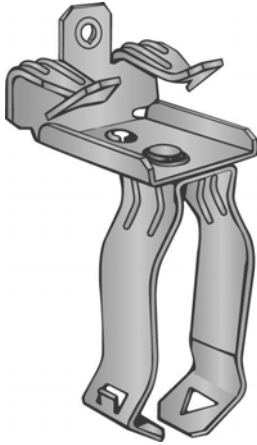


Part Number: P812M58

Product Description: BEAM CLAMP FOR 5/16" - 1/2" FLANGE WITH 1/2" - 3/4" SNAP CLOSED CONDUIT CLIP

**Material Specifications**

Type: Assembly

Finish: Assembly

Color: Various

**Function Specifications****Compatible Wires and Cables**

AC/MC CABLE (OD):

Drop Wire:

Plain Rod (in):

**Threaded Rods and Bolts**

Tapped Holes: 1/4"-20 BACK OF BEAM CLAMP

Clearance Holes (in):

Threaded Rod Size (in):

**Compatible Conduit**

EMT Size (in): 1/2 and 3/4

Rigid/IMC (in): 1/2 and 3/4

**Compatible Flanges and Studs**

Flange Size (in): 5/16 to 1/2

Metal Stud Size (ins):

**Static Load Rating**

Vertical (lbs): 75

Horizontal (lbs):

**Other****Codes and Regulatory**Regulatory  
Certifications: UL/cUL

Country of Origin: US

**Packaging**

General Packaging: Cardboard Box

Box Size: 15 X 8.25 X 7.25

Pieces per Package: 100

Other Box Features:

**Document Information**

Created By: DBLA

Checked By: DJW

Approved By: KLN

Customer Specification #: C11165

Revision Level: 01

ECN #: GAECN01482

Date: 12/10/2013