

## specifications

IntraVUE™ Edge is an Industrial Network Documentation and Monitoring Solution. By simply connecting the device to the network that needs to be scanned, IntraVUE™ Edge is capable of continuously monitoring the status of all devices and switches within the network. It is physically hardened with a fan-less design and has been designed for compliance with the Center for Internet Security (CIS) benchmarks.



## technical information

<b>Dimensions:</b>	4.33 x 4.57 x 1.93 in.
<b>Mounting Information:</b>	Includes accessories to support shelf mount, VESA Mount, Wall Mount, and DIN Rail Mount
<b>Packaged Accessories:</b>	12V 3 AMP Converter with American and European Power Cord, USB flash drive loaded with configuration support, CAT 6A UTP patch cable, printed Getting Started guide
<b>Part Number:</b>	PNPIV (1024 Licensed Appliance) WNMS-APPL (Unlicensed Agent)
<b>Processor:</b>	Fanless Intel® Celeron® N2930 Quad-core 1.83GHz, 2.16GHz Burst, Bay Trail-M, 7.5W TDP, 22nm, Intel® Gen7 HD Graphics
<b>Memory:</b>	1 * 204-pin DDR3L-1333 SO-DIMM up to 8GB total memory, 1.35V Required
<b>Storage:</b>	1 * Full-size mSATA slot (3Gb/s)
<b>Network:</b>	2 * Intel® 82583V Gigabit LAN 1 * Half-size Mini-PCIE slot
<b>Other Features:</b>	HD Audio, AHCI, Watchdog Timer 10-255 min/sec
<b>BIOS:</b>	AMI 32MB Flash ROM
<b>Compliance:</b>	CE, FCC, RoHS, ErP Ready
<b>Temperature:</b>	Operating Temperature 0-40°C, Storage Temperature -20-85°C
<b>Warranty:</b>	1 Year Limited Warranty, details at <a href="http://www.panduit.com/warranty">www.panduit.com/warranty</a>
<b>Appliance OEM:</b>	Jetway® Computer Corporation (p/n: JBC311U93)

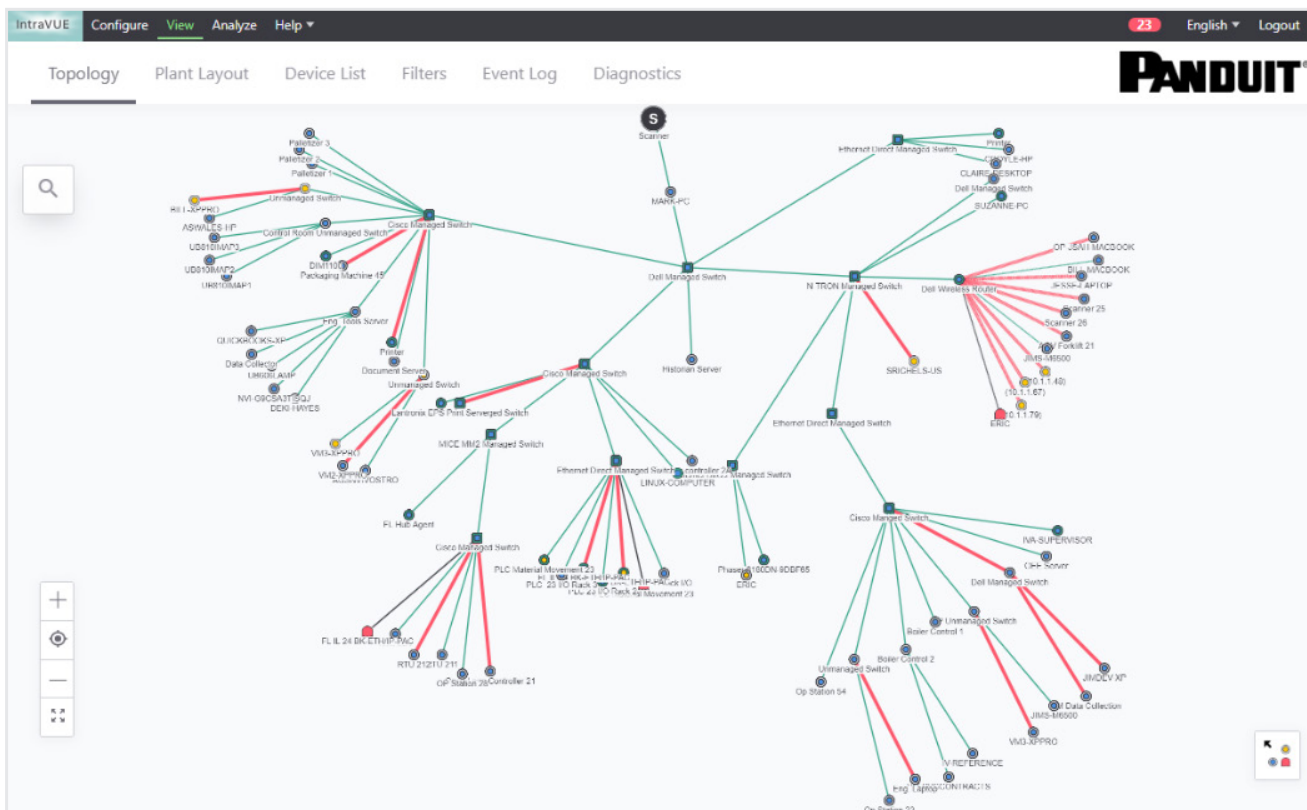
\*All trademarks, service marks, trade names, product names, and logos appearing in this document are the property of their respective owners.

## key features and benefits

<b>Perpetual Use License</b>	No subscriptions are needed to run IntraVUE™ Edge. Purchasers obtain a perpetual license to perform the IntraVUE™ software installed on IntraVUE™ Edge for its own internal business use.
<b>Easy to Deploy</b>	No virtual machine or server commissioning required. IntraVUE™ Edge simply requires IP configuration on the client network.
<b>Device Discovery and Identification</b>	All devices and switches connected and within the scanning parameters will be discovered and identified by IP address, MAC address, Vendor, and other parameters depending on its primary protocol.
<b>Switch Identification</b>	All switches connected and within the scanning parameters will be discovered and polled for topology information based upon SNMPv1, v2 or v3 protocols.
<b>Connection Map and Plant Layout</b>	All devices and switches will be displayed within a connection map as discovered, depending upon the logical system configuration and parameters provided by the client.
<b>Access into the Isolated Networks</b>	The appliance has two copper network ports, both of which can be configured to be scanning separate networks. With proper placement, the appliance can scan both the production network, and isolated networks behind the PLC backplane.
<b>Active Monitoring and Alerts</b>	The devices on the network will be constantly monitored, letting the user know of any changes in their network. With configuration, any disconnection or reconnection events can be sent as email alerts.
<b>Hardened for Security</b>	IntraVUE™ Edge implements security based on the CIS benchmarks for Debian Linux, Chrome, Firefox, Edge, and Internet Explorer 11. It also supports https and can be configured for users to log into using active directory.

## application

1. Plug appliance into desired network, connect to power, and power on
2. Connect laptop to the network and run configuration software on the included USB flash drive
3. Assign IP address using configuration software
4. Open IntraVUE and begin scanning the network



### WORLDWIDE SUBSIDIARIES AND SALES OFFICES

PANDUIT US/CANADA  
Phone: 800.777.3300

PANDUIT EUROPE LTD.  
London, UK  
Phone: 44.20.8601.7200

PANDUIT SINGAPORE PTE. LTD.  
Republic of Singapore  
Phone: 65.6305.7575

PANDUIT JAPAN  
Tokyo, Japan  
Phone: 81.3.6863.6000

PANDUIT LATIN AMERICA  
Guadalajara, Mexico  
Phone: 52.33.3777.6000

PANDUIT AUSTRALIA PTY. LTD.  
Victoria, Australia  
Phone: 61.3.9794.9020

For a copy of Panduit product warranties, log on to [www.panduit.com/warranty](http://www.panduit.com/warranty)



For more information  
Visit us at [www.panduit.com](http://www.panduit.com)  
Contact Customer Service by email: [cs@panduit.com](mailto:cs@panduit.com)  
or by phone: 800.777.3300

© 2020 Panduit Corp.  
ALL RIGHTS RESERVED.  
Printed in the U.S.A.  
PVSP37--WW-ENG  
9/2020