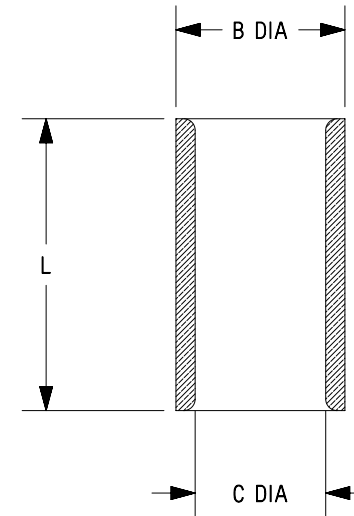


THIS COPY IS PROVIDED ON A RESTRICTED BASIS AND IS NOT TO BE USED IN ANY WAY DETRIMENTAL TO THE INTERESTS OF PANDUIT CORP.

PANDUIT PART #	WIRE COMBINATION (COMBINATION OF ANY TWO)		DIMENSIONS in. [mm]		
			L ± .03 [0,8]	B ± .01 [0,3]	C ± .01 [0,3]
	AWG	mm ²			
PS18	#22 - #18	0,5 - 1,0	.29 [7,4]	.13 [3,3]	.10 [2,5]
PS16	#20 - #16	0,8 - 2,0	.29 [7,4]	.16 [4,1]	.12 [3,0]
PS12	#14 - #12	2,5 - 4,0	.38 [9,7]	.22 [5,6]	.17 [4,3]



NOTES:

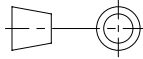
- USED WITH:
A. SOLID OR STRANDED COPPER WIRE
- MATERIAL:
A. TIN PLATED BRASS
- INSTALLATION TOOLS:
A. UL LISTED AND CSA CERTIFIED: CT-100, CT-200
B. PANDUIT APPROVED: CT-260
- WIRE STRIP LENGTH: 5/16 ^{+1/32}₋₀ [7,9 ^{+0,8}₋₀]
7/16 ^{+1/32}₋₀ [11,1 ^{+0,8}₋₀] FOR PS12
- SEE www.panduit.com FOR PACKAGE QUANTITIES INDICATED BY PART NUMBER SUFFIX
- DIMENSIONS IN BRACKETS ARE METRIC EQUIVALENT



LISTED
587H
E52164



CERTIFIED
LR31212

TITLE										Non Insulated Parallel Splice																								
										CUSTOMER DRAWING																								
ITEM REVISION NAME					N41339BA/09																													
DATASET FILE NAME					N41339BA_DC_09A										PANDUIT																			
					 THIRD ANGLE PROJECTION																													
MATERIAL										SEE NOTES										DRAWING NUMBER														
																				A41339														
REV					DATE					BY					CHK					APR					DESCRIPTION					ECN				
09A					01.12.21					BDK					SKB					JADE					REVISED AND REDRAWN					093894				
DRAWN BY					DATE					CHK					SCALE					DRAWING NUMBER					SHEET 1 OF 1					SIZE				
DRL					-					-					N.T.S.					A41339					SHEET 1 OF 1					A				

A-SIZE CUSTOMER

2

1

2

1