



Network Infrastructure for the Enterprise

Preferred Parts – South Asia

PANDUIT[™]

Network Infrastructure for the Enterprise

Today's enterprise IP networks support ever-expanding converged applications for voice, data, and video, as well as functions such as intelligent lighting, security, safety systems, and more.

Panduit Enterprise Networks provide the industry's most comprehensive and holistic portfolio of products and services that enable sustainable, energy-efficient enterprises. Innovative design features provide easy installation, reduced maintenance costs, and improved network reliability and flexibility.

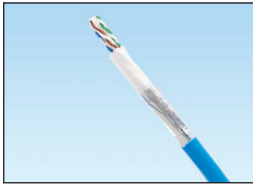
This catalog features the most common offering for an enterprise physical infrastructure deployment. For the complete enterprise offering, please contact your local Panduit representative or visit us at <http://www.panduit.com/en/solutions/enterprise-solutions>.

Table of Contents

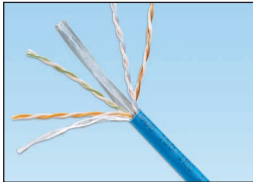
Copper Cable	3	Fibre Pigtail Sets	8
RJ45 Jack Module	3	Cabinet	8
Patch Panels, Kits and Accessories	4	Racks, Shelves and Accessories	9
RJ45 Patch Cords	4 – 5	Cable Managers	9
Patch Cord Bands	5	Cable Manager Capacity Chart	10
Faceplate	6	Blanking Panels	10
Surface Mount Box	6	Labeling	11
Fibre Optic Cable – Indoor/Outdoor	6	Security Devices	11
Fibre Connectors and Patch Cords	7	Tools	11
Fibre Enclosures	7		
Fibre Adapter Module and Panels	8		



Copper Cable



PUC6AM04BU-CEG



PUC6C04BU-C

Part Number	Description	UOM	MOQ
Unshielded			
PUC6ASD04BU-EG	Category 6A U/UTP cable, 26 AWG, Blue, CM, 305m (60m max PL).	Reel	18
PUC6AM04BU-CEG	Category 6A advanced MaTriX U/UTP cable, 23 AWG, Blue, CM, 305m.	Reel	18
PUC6C04BU-C	Category 6 U/UTP cable, 24 AWG, Blue, CM, 305m.	Box	20
PUC5504IGY	Category 5e U/UTP cable, 24 AWG, Gray, CM, 305m.	Box	36
Shielded			
PFL6X04WH-CEG	Category 6A F/UTP cable, 23 AWG, White, LSZH (60332-1), 305m.	Reel	12
PFC6004BU-G	Category 6 F/UTP cable, 23 AWG, Blue, CM, 305m.	Reel	27

Note: F/UTP means Foil around Unshielded Twisted Pairs = shielded cable.
LSZH means Low Smoke Zero Halogen.

RJ45 Jack Module



CJ6X88TGBL



CJS688TGY



CJRCAPBU

Part Number	Description	Std. Pkg. Qty.	Std. Ctn. Qty.
Unshielded			
CJ6X88TGGR	Category 6A RJ45 UTP Mini-Com™ Jack, Green.	1	50
CJ6X88TGBU	Category 6A RJ45 UTP Mini-Com™ Jack, Blue.	1	50
CJ6X88TGYL	Category 6A RJ45 UTP Mini-Com™ Jack, Yellow.	1	50
CJ688TGGR	Category 6 RJ45 UTP Mini-Com™ Jack, Green.	1	50
CJ688TGBU	Category 6 RJ45 UTP Mini-Com™ Jack, Blue.	1	50
CJ688TGYL	Category 6 RJ45 UTP Mini-Com™ Jack, Yellow.	1	50
CJ5E88TGGR	Category 5E RJ45 UTP Mini-Com™ Jack, Green.	1	50
CJ5E88TGBU	Category 5E RJ45 UTP Mini-Com™ Jack, Blue.	1	50
CJ5E88TGYL	Category 5E RJ45 UTP Mini-Com™ Jack, Yellow.	1	50
Shielded			
CJS6X88TGY	Category 6A RJ45 shielded Mini-Com™ Jack, Black.	1	50
CJS688TGY	Category 6 RJ45 shielded Mini-Com™ Jack, Black.	1	50
Termination Caps			
CJRCAPBU	Right angle termination cap for CJ6X88TG.	10	100
CJRCAPIW	Right angle termination cap for CJ688TG.	10	100

Contact Panduit Customer Service for other colours and bulk packs.

Patch Panels, Kits, and Accessories



CPPL24WBLY



CPPLA24WBLY



CPP48HDWBLY



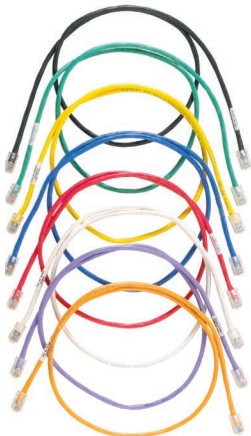
CPPA48HDWBLY



SRB19BLY

Part Number	Description	Std. Pkg. Qty.	Std. Ctn. Qty.
Modular			
CPPL24WBLY	24-port patch panel with labels, with six CFFPL4 faceplates.	1	10
CPPLA24WBLY	24-port angled patch panel with labels, with six CFFPL4 faceplates.	1	10
CPPL48WBLY	48-port angled patch panel with labels, with twelve CFFPL4 faceplates.	1	10
CPPLA48WBLY	48-port patch panel with labels, with twelve CFFPL4 faceplates.	1	10
CPP48HDWBLY	48-port high-density patch panel, with rear-mounted faceplates.	1	10
CPPA48HDWBLY	48-port angled high-density patch panel, with rear-mounted faceplates.	1	10
CP24BLY	24-port all-metal shielded patch panel.	1	10
CPA24BLY	24-port angled all-metal shielded patch panel.	1	10
Strain Relief			
SRB19BLY	Strain relief bar.	1	10

RJ45 Patch Cords



UTP6ASD*M**



UTP6ASD*

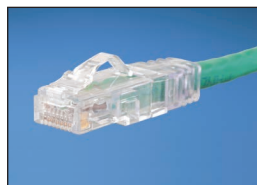


STP6C*

Part Number	Description	Std. Pkg. Qty.	Std. Ctn. Qty.
Category 6A			
UTP6ASD1MGR	Category 6A 26 AWG patch cord, CM, Green, 1m.	1	10
UTP6ASD1MBU	Category 6A 26 AWG patch cord, CM, Blue, 1m.	1	10
UTP6ASD1MYL	Category 6A 26 AWG patch cord, CM, Yellow, 1m.	1	10
UTP6ASD2MGR	Category 6A 26 AWG patch cord, CM, Green, 2m.	1	10
UTP6ASD2MBU	Category 6A 26 AWG patch cord, CM, Blue, 2m.	1	10
UTP6ASD2MYL	Category 6A 26 AWG patch cord, CM, Yellow, 2m.	1	10
UTP6ASD3MGR	Category 6A 26 AWG patch cord, CM, Green, 3m.	1	10
UTP6ASD3MBU	Category 6A 26 AWG patch cord, CM, Blue, 3m.	1	10
UTP6ASD3MYL	Category 6A 26 AWG patch cord, CM, Yellow, 3m.	1	10
UTP6ASD5MGR	Category 6A 26 AWG patch cord, CM, Green, 5m.	1	10
UTP6ASD5MBU	Category 6A 26 AWG patch cord, CM, Blue, 5m.	1	10
UTP6ASD5MYL	Category 6A 26 AWG patch cord, CM, Yellow, 5m.	1	10
Category 6A Shielded			
STP6C1MBU	Category 6A F/UTP patch cord, CM/LSZH, Blue, 1m.	1	10
STP6C1MIG	Category 6A F/UTP patch cord, CM/LSZH, International Gray, 1m.	1	10
STP6C2MBU	Category 6A F/UTP patch cord, CM/LSZH, Blue, 2m.	1	10
STP6C2MIG	Category 6A F/UTP patch cord, CM/LSZH, International Gray, 2m.	1	10
STP6C3MBU	Category 6A F/UTP patch cord, CM/LSZH, Blue, 3m.	1	10
STP6C3MIG	Category 6A F/UTP patch cord, CM/LSZH, International Gray, 3m.	1	10
STP6C5MBU	Category 6A F/UTP patch cord, CM/LSZH, Blue, 5m.	1	10
STP6C5MIG	Category 6A F/UTP patch cord, CM/LSZH, International Gray, 5m.	1	10

Contact Customer Service for other colours and lengths.

RJ45 Patch Cords (continued)



UTPSP*

Part Number	Description	Std.Pkg.Qty.	Std.Ctn.Qty.
Category 6			
UTPSP1MYLY	Category 6 UTP patch cord, CM, Yellow, 1m.	1	10
UTPSP1MBUY	Category 6 UTP patch cord, CM, Blue, 1m.	1	10
UTPSP1MGRY	Category 6 UTP patch cord, CM, Green, 1m.	1	10
UTPSP2MYLY	Category 6 UTP patch cord, CM, Yellow, 2m.	1	10
UTPSP2MBUY	Category 6 UTP patch cord, CM, Blue, 2m.	1	10
UTPSP2MGRY	Category 6 UTP patch cord, CM, Green, 2m.	1	10
UTPSP3MYLY	Category 6 UTP patch cord, CM, Yellow, 3m.	1	10
UTPSP3MBUY	Category 6 UTP patch cord, CM, Blue, 3m.	1	10
UTPSP3MGRY	Category 6 UTP patch cord, CM, Green, 3m.	1	10
UTPSP5MYLY	Category 6 UTP patch cord, CM, Yellow, 5m.	1	10
UTPSP5MBUY	Category 6 UTP patch cord, CM, Blue, 5m.	1	10
UTPSP5MGRY	Category 6 UTP patch cord, CM, Green, 5m.	1	10

Category 6 28 AWG

UTP28SP1MYL	Category 6 UTP 28 AWG patch cord, CM/LSZH, Yellow, 1m.	1	10
UTP28SP1MGR	Category 6 UTP 28 AWG patch cord, CM/LSZH, Green, 1m.	1	10
UTP28SP8INBU	Category 6 UTP 28 AWG patch cord, CM/LSZH, Blue, 0.2m.	1	10
UTP28SP1MBU	Category 6 UTP 28 AWG patch cord, CM/LSZH, Blue, 1m.	1	10
UTP28SP2MYL	Category 6 UTP 28 AWG patch cord, CM/LSZH, Yellow, 2m.	1	10
UTP28SP2MGR	Category 6 UTP 28 AWG patch cord, CM/LSZH, Green, 2m.	1	10
UTP28SP2MBU	Category 6 UTP 28 AWG patch cord, CM/LSZH, Blue, 2m.	1	10
UTP28SP3MYL	Category 6 UTP 28 AWG patch cord, CM/LSZH, Yellow, 3m.	1	10
UTP28SP3MGR	Category 6 UTP 28 AWG patch cord, CM/LSZH, Green, 3m.	1	10
UTP28SP3MBU	Category 6 UTP 28 AWG patch cord, CM/LSZH, Blue, 3m.	1	10
UTP28SP5MYL	Category 6 UTP 28 AWG patch cord, CM/LSZH, Yellow, 5m.	1	10
UTP28SP5MGR	Category 6 UTP 28 AWG patch cord, CM/LSZH, Green, 5m.	1	10
UTP28SP5MBU	Category 6 UTP 28 AWG patch cord, CM/LSZH, Blue, 5m.	1	10



UTPCH*

Category 5e

UTPCH1MYLY	Category 5e patch cord, CM, Yellow, 1m.	1	10
UTPCH1MBUY	Category 5e patch cord, CM, Blue, 1m.	1	10
UTPCH1MGRY	Category 5e patch cord, CM, Green, 1m.	1	10
UTPCH2MYLY	Category 5e patch cord, CM, Yellow, 2m.	1	10
UTPCH2MBUY	Category 5e patch cord, CM, Blue, 2m.	1	10
UTPCH2MGRY	Category 5e patch cord, CM, Green, 2m.	1	10
UTPCH3MYLY	Category 5e patch cord, CM, Yellow, 3m.	1	10
UTPCH3MBUY	Category 5e patch cord, CM, Blue, 3m.	1	10
UTPCH3MGRY	Category 5e patch cord, CM, Green, 3m.	1	10

Contact Customer Service for other colours and lengths.

Patch Cord Bands

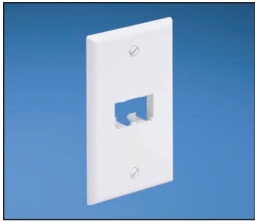


PCBAND-Q**

Part Number	Description	Std. Pkg. Qty.	Std. Ctn. Qty.
PCBAND**-Q	Patch cord band, snap on.	25	25

Replace ** with BL(Black), RD (Red), OR (Orange), YL (Yellow), GR (Green), BU (Blue), or VL (Violet).

Faceplate



CFP2IW

Part Number	Description	Std. Pkg. Qty.	Std. Ctn. Qty.
CFP1IW	1-port classic vertical faceplate, Off White.	1	10
CFP2IW	2-port classic vertical faceplate, Off White.	1	10
CFPE1IWY	1-port executive vertical faceplate with labels, Off White.	1	10
CFPE2IWY	2-port executive vertical faceplate with labels, Off White.	1	10

Surface Mount Box



CBX2IW-AY



CMBIW-X

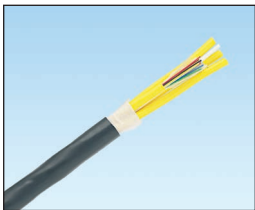
Part Number	Description	Std. Pkg. Qty.	Std. Ctn. Qty.
CBX1IW-AY	1-port surface mount box, Off White.	1	10
CBX2IW-AY	2-port surface mount box, Off White.	1	10
CBX4IW-AY	4-port surface mount box, Off White.	1	10
CBXF6IW-AY	6-port surface mount box with built-in fiber spool, Off White.	1	10
CBXF12IW-AY	12-port surface mount box with built-in fiber spool, Off White.	1	10

Blank Modules

CMBBL-X	Mini-Com™ 1-port blank module, Black.	10	50
CMBIW-X	Mini-Com™ 1-port blank module, Off White.	10	50

Contact Panduit Customer Service for other colours.

Fibre Optic Cable – Indoor/Outdoor



Part Number	Description	UOM	MOQ
FLKRX06	6-fibre OM3 10 GbE multimode riser all-dielectric cable with tight buffered fibres.	Metre	1000
FLKRX12	12-fibre OM3 10 GbE multimode riser all-dielectric cable with tight buffered fibres.	Metre	1000
FLKRX24	24-fibre OM3 10 GbE multimode riser all-dielectric cable with tight buffered fibres.	Metre	1000
FLKR906	6-fibre OS2 singlemode riser all-dielectric cable with tight buffered fibres.	Metre	1000
FLKR912	12-fibre OS2 singlemode riser all-dielectric cable with tight buffered fibres.	Metre	1000
FLKR924	14-fibre OS2 singlemode riser all-dielectric cable with tight buffered fibres.	Metre	1000

Fibre Connectors and Patch Cords



FLCSMCXAQY



FSCSCBU



NKFPX23LSSSM***



NKFPX2ELLLM***

Part Number	Description	Std. Pkg. Qty.	Std. Ctn. Qty.
OptiCam™ Pre-Polished Connectors*			
FLCSMCXAQY	LC 50/125µm OM3/OM4 multimode simplex connector, Aqua boot.	1	10
FLCSCBUY	LC 9/125µm singlemode simplex fiber optic connector for 900µm.	1	10
FSCMCXAQ	SC 50/125µm OM3/OM4 multimode simplex connector, Aqua boot.	1	10
FSCSCBU	SC 9/125µm singlemode simplex connector, Blue boot.	1	10
Fibre Patch Cords			
NKFPX23LSSSM001	SC 50/125µm OM3, 3mm jacket duplex patch cord, 1m.	1	10
NKFPX23LSSSM002	SC 50/125µm OM3, 3mm jacket duplex patch cord, 2m.	1	10
NKFPX23LSSSM003	SC 50/125µm OM3, 3mm jacket duplex patch cord, 3m.	1	10
NKFPX23LSSSM005	SC 50/125µm OM3, 3mm jacket duplex patch cord, 5m.	1	10
NKFP923LSSSM001	SC 9/125µm OS2, 3mm jacket duplex patch cord, 1m.	1	10
NKFP923LSSSM002	SC 9/125µm OS2, 3mm jacket duplex patch cord, 2m.	1	10
NKFP923LSSSM003	SC 9/125µm OS2, 3mm jacket duplex patch cord, 3m.	1	10
NKFP923LSSSM005	SC 9/125µm OS2, 3mm jacket duplex patch cord, 5m.	1	10
NKFPX2ELLLSM001	LC 50/125µm OM3, 1.6mm jacket duplex patch cord, 1m.	1	10
NKFPX2ELLLSM002	LC 50/125µm OM3, 1.6mm jacket duplex patch cord, 2m.	1	10
NKFPX2ELLLSM003	LC 50/125µm OM3, 1.6mm jacket duplex patch cord, 3m.	1	10
NKFPX2ELLLSM005	LC 50/125µm OM3, 1.6mm jacket duplex patch cord, 5m.	1	10
NKFP92ELLLSM001	LC 9/125µm OS2, 1.6mm jacket duplex patch cord, 1m.	1	10
NKFP92ELLLSM002	LC 9/125µm OS2, 1.6mm jacket duplex patch cord, 2m.	1	10
NKFP92ELLLSM003	LC 9/125µm OS2, 1.6mm jacket duplex patch cord, 3m.	1	10
NKFP92ELLLSM005	LC 9/125µm OS2, 1.6mm jacket duplex patch cord, 5m.	1	10

*See page 11 for OptiCam™ Tool Kit.
Contact Panduit Customer Service for other lengths.

Fibre Enclosures



FMT1



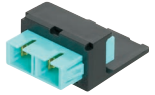
FCE1U



FOSMF

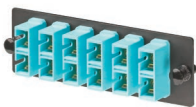
Part Number	Description	Std. Pkg. Qty.	Std. Ctn. Qty.
FMT1	Rack-mount fibre tray, 1 RU. Requires 24-port modular patch panel and Mini-Com™ Adapter Modules.	1	1
FMT1A	Rack-mount fibre tray, angled, 1 RU. Requires 24-port modular patch panel and Mini-Com™ Adapter Modules.	1	1
CFAPPBL1	Flat fibre patch panel. Holds up to four FAP or FMP adapter panels.	1	1
CFAPPBL1A	Angled fibre patch panel. Holds up to four FAP or FMP adapter panels.	1	1
FCE1U	Rack-mount fibre enclosure, 1 RU. Accepts four fibre adapter panels or QuickNet™ Cassettes.	1	1
FRME4	Rack-mount fibre enclosure, 4 RU. Accepts twelve fibre adapter panels or QuickNet™ Cassettes.	1	1
FWME2	Wall mount enclosure accepts two fibre adapter panels or QuickNet™ Cassettes.	1	1
FOSMF	Fibre optic splice module, 24 fusion, for rack-mount enclosure.	1	1
FSC24	Fibre splice chip accommodates and protects up to 24 fusion splices, suits wall-mount or rack-mount enclosure.	1	1
FOSP61-C	Fibre splice protector.	100	100

Fibre Adapter Module and Panels



CMDAQSCZBL

Part Number	Description	Std. Pkg. Qty.	Std. Ctn. Qty.
Fibre Adapter Modules			
CMDAQSCZBL	SC duplex (Aqua) adapter (Black) Mini-Com™ Module Assembly, zirconia, Multimode OM3/OM4.	1	10
CMDBUSCZBU	SC duplex (Blue) adapter (Blue) Mini-Com™ Module Assembly, zirconia, Singlemode.	1	10
CMDSAQLCZBL	Duplex LC (Aqua) adapter (Black) Mini-Com™ Module Assembly, zirconia, Multimode OM3/OM4.	1	10
CMDSLZCZBU	Duplex LC (Blue) adapter (Blue) Mini-Com™ Module Assembly, zirconia, Singlemode.	1	10



FAP6WAQDSC

Fibre Adapter Panels			
FAP6WAQDSC	Fibre adapter panel with six SC duplex (Aqua) adapters, phosphor bronze, Multimode OM3/OM4.	1	10
FAP6WBUDSCZ	Fibre adapter panel with six SC duplex (Blue) adapters, zirconia, Singlemode.	1	10
FAP6WAQDLCZ	Fibre adapter panel with six LC duplex (Aqua) adapters, zirconia, Multimode OM3/OM4.	1	10
FAP6WAQDLC	Fibre adapter panel with six LC duplex (Aqua), phosphor bronze, Multimode OM3/OM4.	1	10
FAP12WAQDLC	Fibre adapter panel with twelve LC duplex (Aqua), phosphor bronze, Multimode OM3/OM4.	1	10
FAP6WBUDLCZ	Fibre adapter panel with six LC duplex (Blue) adapters, zirconia, Singlemode.	1	10
FAP12WBUDLCZ	Fibre adapter panel with twelve LC duplex (Blue) adapters, zirconia, Singlemode.	1	10



FXTRL7N7NANM005

QuickNet™ MPO Cassettes and Interconnect Cables			
FXTRL7N7NANM005	12 core PanMPO™ Interconnect, OM3, 5m.	1	10
FXTRL7N7NANM010	12 core PanMPO™ Interconnect, OM3, 10m.	1	10
FXTRL7N7NANM015	12 core PanMPO™ Interconnect, OM3, 15m.	1	10
FC2XN-12-10AS	Fibre cassette, 6 duplex LC to MPO, 12 core Method A Standard, OM3.	1	10
FC2XN-12-10AF	Fibre cassette, 6 duplex LC to MPO, 12 core modified Method A, flipped, OM3.	1	10



FC2XN-12-10AS

Fibre Pigtail Sets



NKFPX1BN3NNM001



NKFPX1BN1NNM001

Part Number	Description	Std. Pkg. Qty.	Std. Ctn. Qty.
NKFPX1BN3NNM001	OM3 1-fibre, 900µm, buffered, SC to pigtail, std. IL., 1m.	1	10
NKFP91BN3NNM001	OS1/OS2 1-fibre, 900µm buffered, SC to pigtail, Std. IL., 1m.	1	10
NKFPX1BN1NNM001	OM3 1-fibre, 900µm, buffered, LC to pigtail, std. IL., 1m.	1	10
NKFP91BN1NNM001	OS1/OS2 1-fibre, 900µm, LC to pigtail, std. IL., 1m.	1	10

Cabinet



S6512B

Part Number	Description	Std. Pkg. Qty.	Std. Ctn. Qty.
DA8512	45 RU 800mm wide x 1070mm deep, cage nut rails.	1	1
DA6512	45 RU 600mm wide x 1070mm deep, cage nut rails.	1	1
E6412B2	24 RU 600mm wide x 1070mm deep, perforated front and rear doors, solid side panels.	1	1
E6212B1	12 RU 600mm wide x 1070mm deep, perforated front and rear doors, solid side panels.	1	1
PZC12W	Wall mount cabinet with windowed front door.	1	1

Racks, Shelves and Accessories



R4PCN

Part Number	Description	Std. Pkg. Qty.	Std. Ctn. Qty.
Racks			
R2P	2 post rack, 45 RU, with threaded rails.	1	1
R4PCN	4 post rack, 45 RU with cage nut rails, 760mm deep.	1	1
Shelves			
SRM19FM1	Front mount shelf, 1 RU, 480mm deep.	1	1
RSHLF	Front and rear mount shelf, 1 RU, 760mm deep.	1	1
Rack Accessories			
S1224-C	#12-24 screws.	100	1000
CNWS1224-C	#12-24 cage nut with screws.	100	1000
CNWSM6-C	M6 cage nut with screws.	100	1000
R2PPDUB	PDU mounting kit, suits 2 post rack and 4 post rack.	1	1
Grounding			
RGCBNJ660P22	Common bonding jumper and HTAP.	1	10
RGCBNJ660PY	Common bonding jumper and HTAP.	1	10
RGS134-1Y	Grounding strip for threaded rail.	1	10
RGS134B-1	Grounding strip for caged nut rails.	1	10
RGESDWS	ESD wrist strap with 6' coil cord, banana plug.	1	10
RGESD2-1	ESD port for threaded rail.	1	10
RGESD2B-1	ESD port for caged nut rail.	1	10
RGRB19CN	Grounding bus bar.	1	10
CNBK	Green bonding #12-24 cage nuts and bonding screws (package of 50).	1	10
RGTBSG-C	Green thread-forming bonding screw, #12-24 x 1/2".	100	1000

Cable Managers



NMF4



WMPSE



PRV8 WMPVHC45E

Part Number	Description	Std. Pkg. Qty.	Std. Ctn. Qty.
NMF2	NetManager™ Horizontal cable manager high capacity front only, 2 RU.	1	1
NMF4	NetManager™ Horizontal cable manager high capacity front only, 4 RU.	1	1
WMPSE	PatchLink™ Horizontal Cable Manager, front and rear, 1 RU.	1	1
WMP1E	PatchLink™ Horizontal Cable Manager, front and rear, 2 RU.	1	1
WMPFSE	PatchLink™ Horizontal Cable Manager, front only, 1 RU.	1	1
WMPF1E	PatchLink™ Horizontal Cable Manager, front only, 2 RU.	1	1
PRV8	PatchRunner™ Dual-Sided Vertical Cable Manager, 8 inch.	1	1
PRVF8	PatchRunner™ Single-Sided Vertical Cable Manager, 8 inch.	1	1
PRD8	PatchRunner™ Door, 8 inch.	1	1
PRV12	PatchRunner™ Dual-Sided Vertical Cable Manager, 12 inch.	1	1
PRD12	PatchRunner™ Door, 12 inch.	1	1
PREPB1	PatchRunner™ End Panel.	1	1
WMPVHC45E	NetRunner™ Dual-Sided High-Capacity Vertical Cable Manager, 170mm wide, 45 RU.	1	1

Cable Manager Capacity Chart

Part Number	Description	Front				Rear			
		Cat. 6A-SD	Cat. 6	Cat. 6 (28 AWG)	Cat. 5e	Cat. 6A-SD	Cat. 6A	Cat. 6	Cat. 5e
NMF2	Horizontal cable manager high capacity front only, 2 RU.	64	88	216	88	N/A	N/A	N/A	N/A
NMF4	Horizontal cable manager high capacity front only, 4 RU.	210	220	540	220	N/A	N/A	N/A	N/A
WMPSE	PatchLink™ Horizontal Cable Manager, front and rear, 1 RU.	24	25	61	25	40	N/A	42	42
WMP1E	PatchLink™ Horizontal Cable Manager, front and rear, 2 RU.	60	62	153	62	80	N/A	83	83
WMPFSE	PatchLink™ Horizontal Cable Manager, front only, 1 RU.	24	25	61	25	N/A	N/A	N/A	N/A
WMPF1E	PatchLink™ Horizontal Cable Manager, front only, 2 RU.	60	62	153	62	N/A	N/A	N/A	N/A
PRV8	PatchRunner™ Dual-Sided Vertical Cable Manager, 8 inch.	480	500	1229	500	344	193	359	359
PRVF8	PatchRunner™ Single-Sided Vertical Cable Manager, 8 inch.	480	500	1229	500	N/A	N/A	N/A	N/A
PRV12	PatchRunner™ Dual-Sided Vertical Cable Manager, 12 inch.	771	804	1973	804	545	305	569	569

Blanking Panels



TLBP1S-V

Part Number	Description	Std. Pkg. Qty.	Std. Ctn. Qty.
TLBP1S-V	Toolless blanking panel, 1 RU, suit cage nut holes.	5	50
TLBP2S-V	Toolless blanking panel, 2 RU, suit cage nut holes.	5	50
CPAF1BLY	Blanking panel, angled, 1 RU.	1	10
FLBSIM-51	Full-length blanking shade, 4 – 51 RU.	5	50

Labeling



LS8EQ-KIT

Part Number	Description	Std. Pkg. Qty.	Std. Ctn. Qty.
LS8EQ-KIT	LS8EQ hand-held printer with QWERTY keypad.	1	1
LS8E-ACE	100 – 240 VAC power adapter with European style plug.	1	1
C252X030FJC	Modular patch panel (CP) adhesive label cassette.	1	10
C261X035Y1C	Modular patch panel (CPPL) label cassette.	1	10
S100X150VAC	Cable self-laminating label cassette.	1	10
R100X150V1C	Turn-Tell™ Patch Cord Label Cassette.	1	10
F100X150AJC	Flag label cassette, polyester.	1	10
T100X000VPC-BK	Vinyl tape label cassette, 25mm wide.	1	10

Security Devices



PSL-LCAB



FLCCLIW-X



PSL-DCJB



PSL-DCPLRX

Part Number	Description	Std. Pkg. Qty.	Std. Ctn. Qty.
PSL-LCAB	LC duplex adapter blockout device, ten devices (Red) and one removal tool (Black).	1	20
FLCCLIW-X	LC patch plug lock-in device, ten devices and one removal tool.	10	100
PSL-DCJB-BL	Jack module blockout device, ten block-outs (Black) and one removal tool (Black).	1	20
PSL-DCJB-BU	Jack module blockout device, ten block-outs (Blue) and one removal tool (Black).	1	20
PSL-DCJB	Jack module blockout device, ten block-outs (Red) and one removal tool (Black).	1	20
PSL-DCPLRX	Recessed RJ45 plug lock-in device, ten devices (Red) and one installation/removal tool (Black).	1	20
PSL-DCPLS	Super recessed RJ45 plug lock-in device, ten devices (Red) and one installation/removal tool (Black).	1	20
PSL-DCPLX	RJ45 plug lock-in device, ten devices (Red) and one installation/removal tool (Black).	1	20

Tools



EGJT



TGJT



CBOT24K

Part Number	Description	Std. Pkg. Qty.	Std. Ctn. Qty.
EGJT	TG jack termination tool.	1	—
TGJT	TG jack termination tool, for high-volume installations.	1	—
CJAST	Copper cable jacket stripper.	1	1
CWST	Copper wire snips.	1	1
PDT110	110 punchdown tool.	1	1
CBOT24K	Cable bundle organising tool.	1	10
FCAMKIT	OptiCam™ Termination Kit.	1	1



PANDUIT™

Panduit Singapore Pte. Ltd.
60 Tuas Avenue 11
Singapore 639106

cs-ap@panduit.com
0008006501844 (India)

www.panduit.com