

PANDUIT[®] TERMINAL BLOCK MARKERS QUICK START GUIDE

REQUIRED COMPONENTS



TDP43ME Printer with roll stand (TDP43ME-RS) and resin ribbon



TDP43ME-TB-KIT
Width Guide Adapter Kit



Easy-Mark Plus™
Labeling Software

STEP 1: TDP43ME FIRMWARE UPDATE

- To print terminal block markers you must have TDP43ME printer firmware version G3.0AP1 or newer
- To check version, press and hold the FEED button while turning the printer on. Keep holding FEED until first 3 beeps, then let go of button.
- Self-test will print automatically, showing version number next to "TDP43ME" (For more details see section 3-3 of TDP43ME user manual)
- If you have version G3.0AP0 or newer, proceed to step 2 below
- To upgrade your firmware, visit www.panduit.com/FirmwareUpdate
- Open the downloaded .zip file, and doubleclick on the DownloadTool 1.7.0.0f.exe file
- Click on Download Firmware
- Click on the .BIN file to highlight and select
- Click Open, printer should automatically begin firmware installation and reboot

Contact Panduit Identification Technical Support with any questions.
GA-TechSupport@panduit.com | 866-871-4571

STEP 2: INSTALL EASY-MARK PLUS™ LABELING SOFTWARE

If you have already installed Easy-Mark Plus™ Labeling Software, then proceed to Step 3.

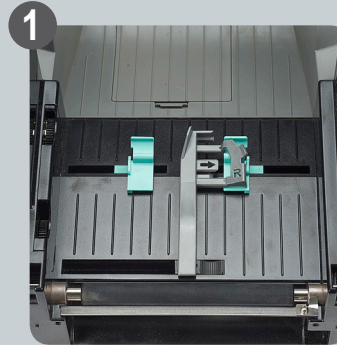
Existing Easy-Mark™ users:

- Visit www.panduit.com for a free upgrade to Easy-Mark Plus™

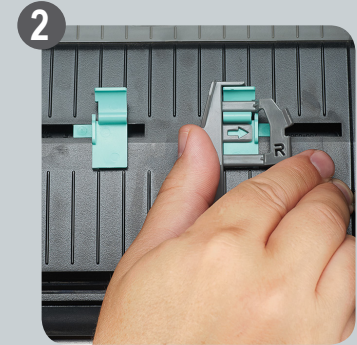
New Easy-Mark™ users:

- Install Easy-Mark Plus™ that is provided with your TDP43ME printer

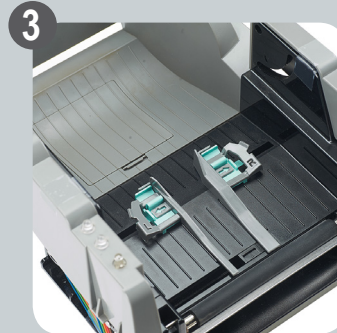
STEP 3: WIDTH GUIDE INSTALLATION



Align right "R" width guide insert into green printer guide as shown above



Use thumb to press insert horizontally into guide, until insert snaps into place



Repeat installation for left "L" side



Use fingers to widen guides by pressing out

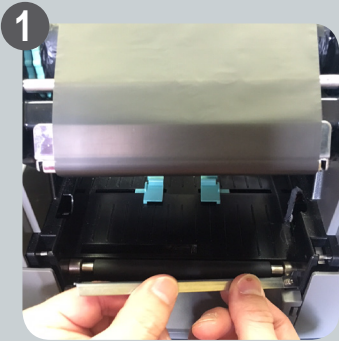


Use tabs on width guides to press guides inward as needed



When changing from terminal block markers to other types of labels, use the rear tabs on the width guide inserts to lift and remove them from the green printer guides

STEP 4: FRONT PLATE INSTALLATION



Remove metal tear bar from front of printer by firmly pulling upwards. Bar will snap out of the tabs by which it is attached.



Remove the existing plate from the front of printer by pressing releasable tabs on sides and pulling plate out.



Install new front plate by sliding plate downward from above the front of the printer. Press down until the front plate sits completely flush. If it does not sit completely flush, ensure metal bar has been removed.

STEP 5: FORMAT SETTINGS AND PRINTER DRIVER

Two final settings must be altered prior to successfully printing terminal block markers.

Print Driver Stop Position

- Before opening Easy-Mark™ Plus, click on start, "Devices and Printers"
- Right click on the desired TDP43ME printer and click "Printing Preferences"
- Click "Advanced Setup" tab
- Click "Other" button
- Change "Stop Position" to 0.00
- Close, click "Apply", and click "OK"
- Open Easy-Mark™ Plus Labeling Software

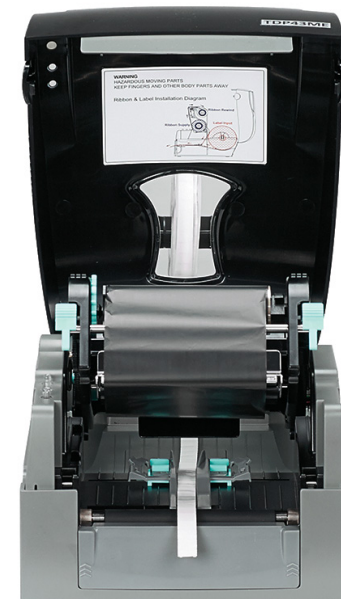
Easy-Mark™ Plus Print Offset

- In Easy-Mark™ Plus, open a terminal block marker format.
- Click "Print", "Print Document"
- Select desired TDP43ME printer
- Click on "Features" button
- Change "Top Offset" to 1.5mm (0.059in) if using TB05X12, TB06X12, & TB08X12.
- Change "Top Offset" to 2.49mm (0.098in) if using TB05X08 & TB06X08.
- Check box for "Save Offsets"

PANDUIT[®]
infrastructure for a connected world

QUICK START GUIDE FOR TERMINAL BLOCK MARKERS

Contact Panduit Identification Technical Support with any questions.
GA-TechSupport@panduit.com | 866-871-4571



Final Assembly Example